



WATER USE SUSPENSION DIRECTIVE 2010-05



August 11, 2010

SUSPENSION OF SURFACE WATER WITHDRAWALS (PEACE RIVER)

TO: INDUSTRY CLIENTS

EFFECTIVE DATE: IMMEDIATELY

REQUIREMENT:

Effective immediately, the BC Oil and Gas Commission (Commission) is requiring suspension of water withdrawal from rivers, lakes and streams, previously approved by the Commission under Section 8 of the *Water Act*, for the following basins within the Peace River Watershed:

- Kiskatinaw River
- Pine River
- Halfway River
- Moberly River

BACKGROUND:

The Peace River basin is experiencing a persistent and severe summer drought. Precipitation has been 30 per cent of normal rainfall since mid-May, and river levels are unusually low. The outlook for the next seven or more days is for a continuation of warm and dry weather.

Due to the very low stream flow conditions, suspension of previously approved short-term water use is required to maintain river flows for community water supply, and for critical fish habitat.

The suspension will be lifted when drought conditions ease due to rainfall. Should it be required, the Commission will assist industry in identifying options for alternate short-term water supply.

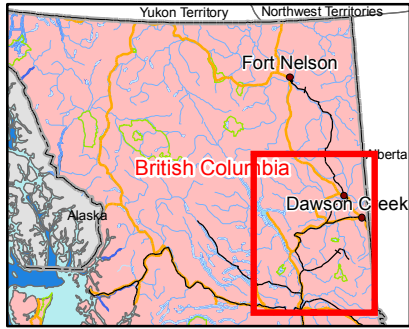
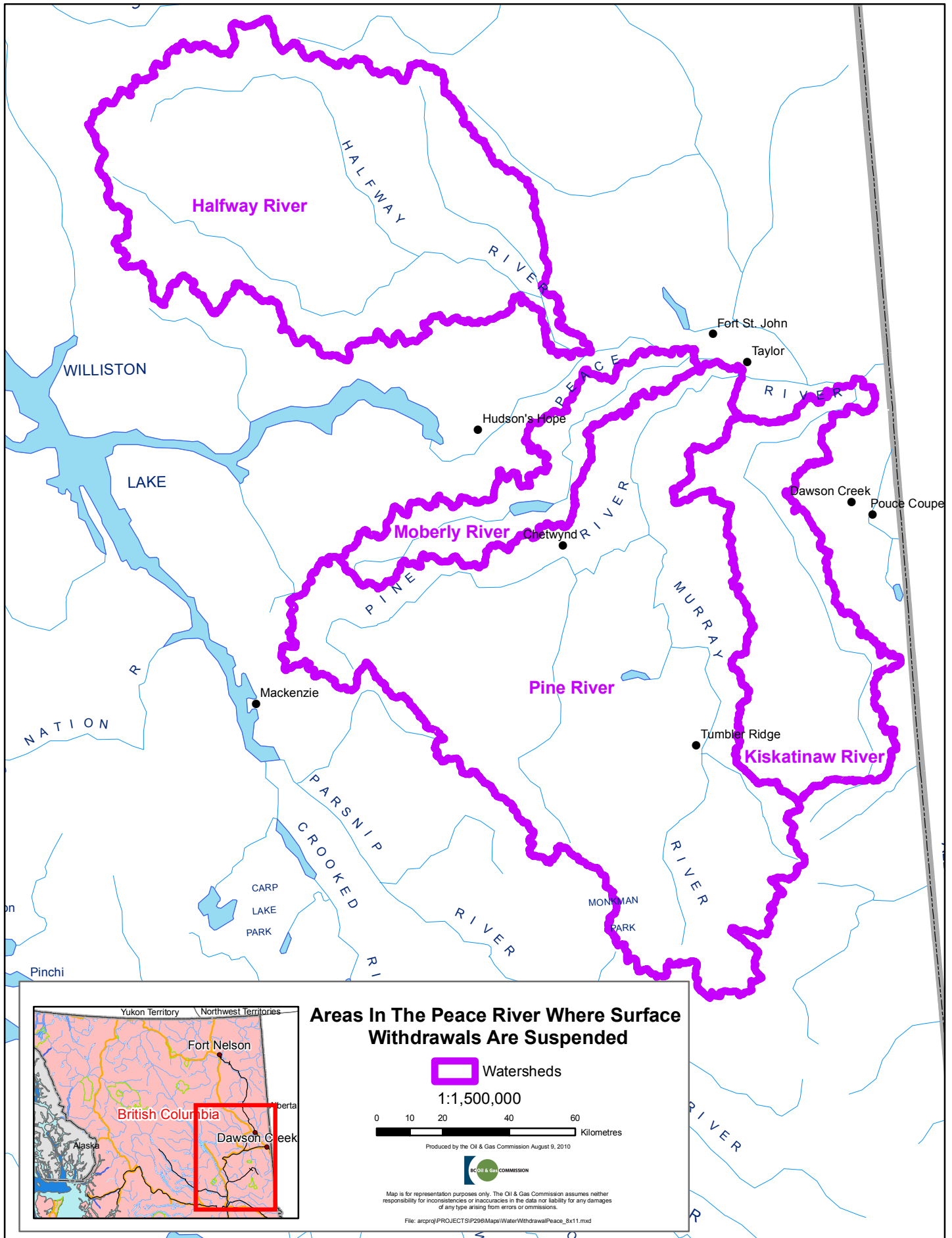
Should you have any questions regarding this Directive, please contact:

Allan Chapman
Hydrologist
BC Oil and Gas Commission
Allan.Chapman@gov.bc.ca
Tel: 250-419-4435

Original signed by:

Alex Ferguson
Commissioner and CEO
BC Oil and Gas Commission

**For oil and gas incidents and emergencies, please contact the Commission at:
1-800-663-3456 (24 hours).**



Areas In The Peace River Where Surface Withdrawals Are Suspended

 Watersheds

1:1,500,000



Produced by the Oil & Gas Commission August 9, 2010



Map is for representation purposes only. The Oil & Gas Commission assumes neither responsibility for inconsistencies or inaccuracies in the data nor liability for any damages of any type arising from errors or omissions.

File: a:\proj\PROJECTS\IP296\Maps\WaterWithdrawalPeace_box11.mxd