

**Prince Rupert**  
Gas Transmission Project



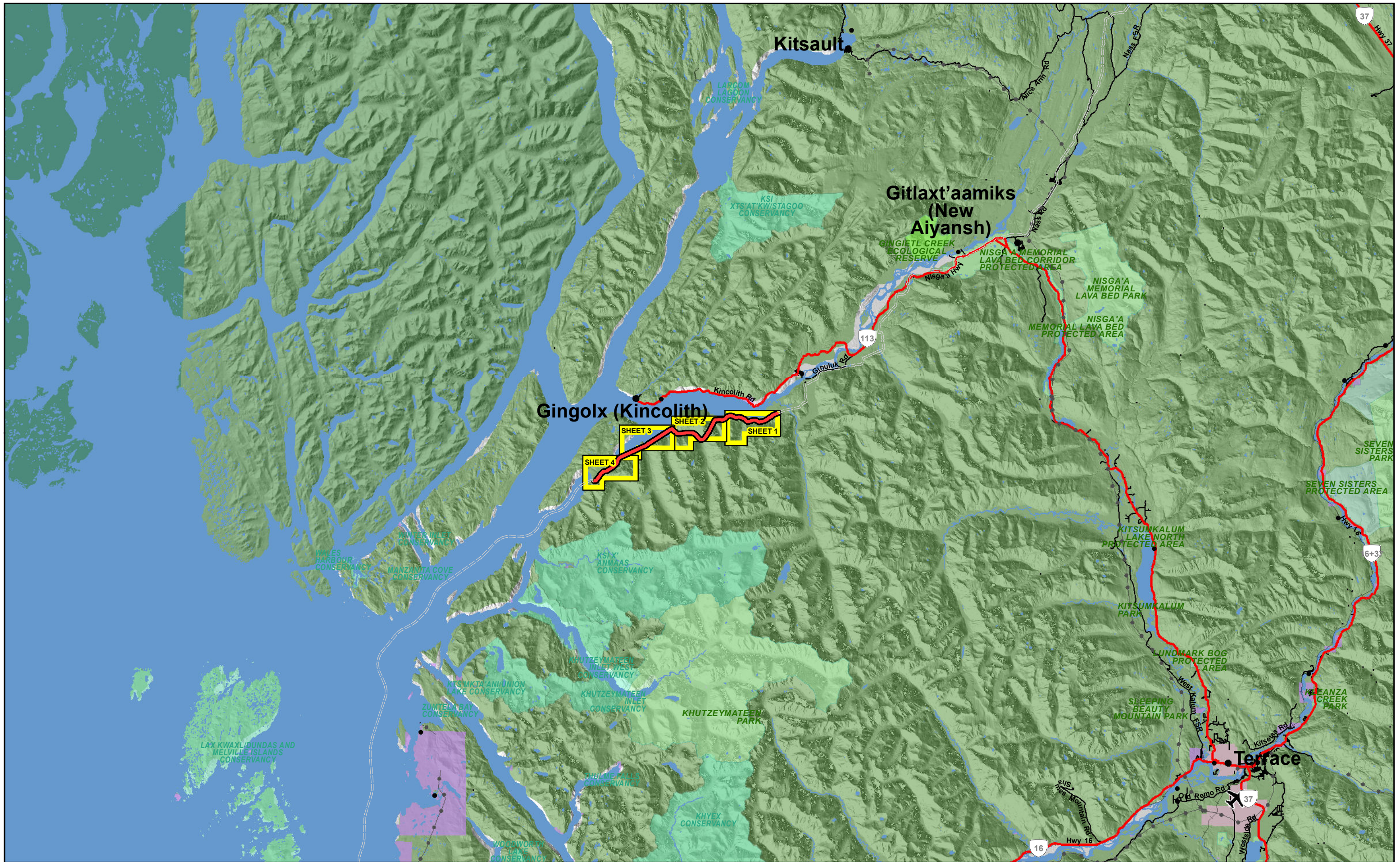
## **APPLICATION SECTION 6**

### **MAPBOOK**

**SCALE: 1:20,000**

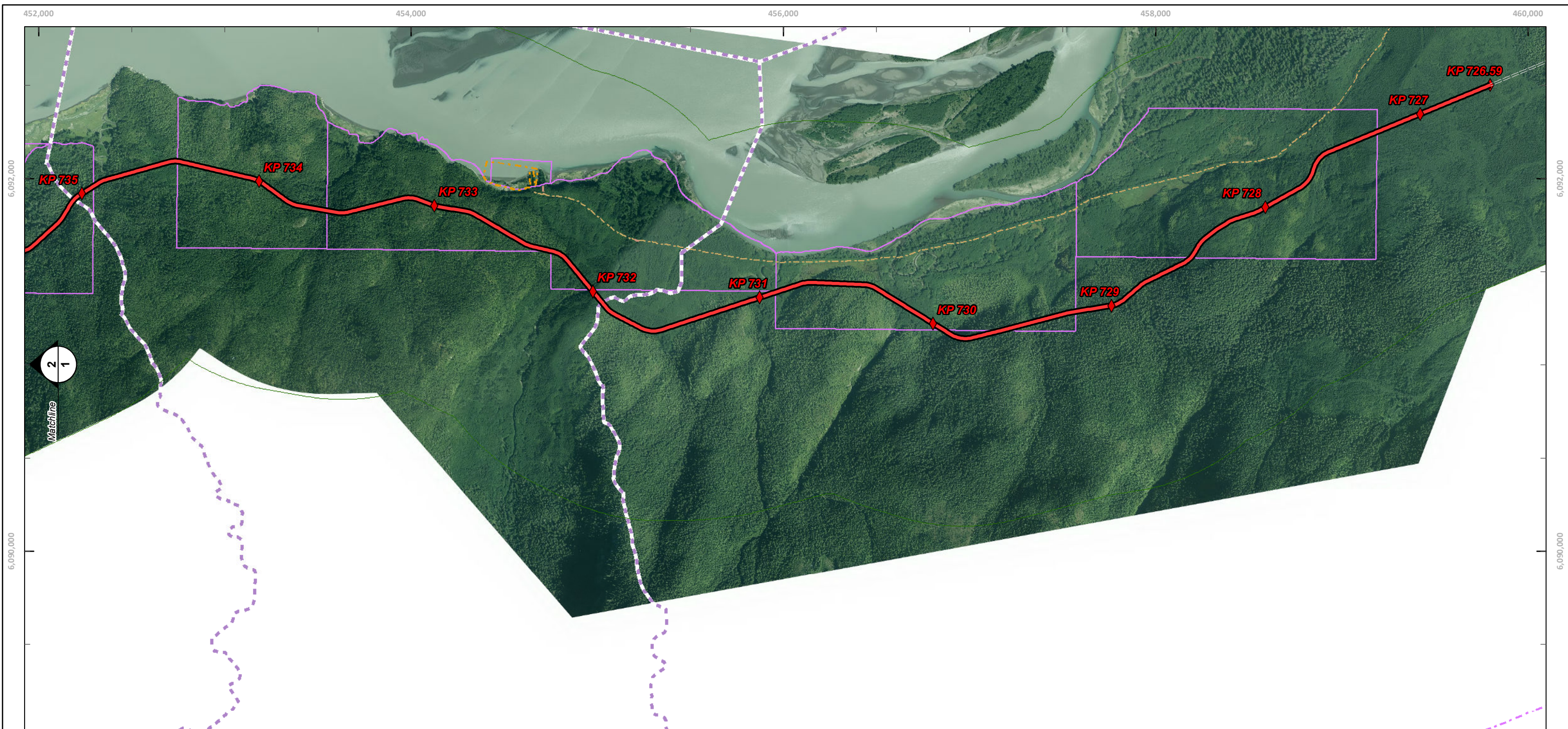
**KP 726.59 – KP 759.94**





**APPLICATION SECTION 6 - KEY MAP**





452,000 454,000 456,000 458,000 460,000

6,092,000 6,090,000

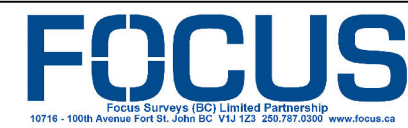
Matchline

2 1

6,088,000

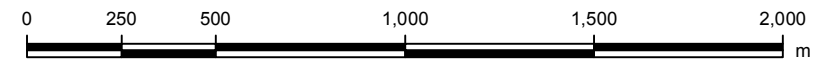
452,000 454,000

PROJECT FEATURES	TRANSPORTATION	FORESTRY	MISCELLANEOUS
Proposed Features (9003)	Highway	Cutblock	Coal Tenure
<b>OIL AND GAS</b>	Paved Road	Forest Cover Reserve	Mineral Tenure
Ground Disturbance/Leases	Highgrade Gravel	Community Forests	Mineral Reserve
Pipeline	Lowgrade Gravel	Woodlots	Site "C" HCA Permit
<b>CROWN TENURES</b>	Winter Road	Tree Farm License	Recreation Protected
Waterpower	Cutline/Trail	Old Growth Management Area	Grazing Tenure
Windpower	Forestry Road	Protected Area/ Ecological Reserve	Statement of Intent Boundary
Agriculture	Rec Trail	Provincial Park	
Env. Conserv. & Rec.	Railway	Recreation Area	
Industrial	<b>MUNICIPAL</b>	Vehicle Closure Area	
Communication	Municipality		
Watershed	Large Municipality		
Utility	Parcel		
Transportation			
Electric Power Line			
Quarrying			



**Prince Rupert Gas Transmission Project**

**1:20,000 MAP SHOWING PROPOSED PIPELINE ROUTE (APPLICATION SECTION 6) KP 726.59 TO KP 759.94**



SCALE 1:20,000 (NAD 1983 UTM ZONE 9N)

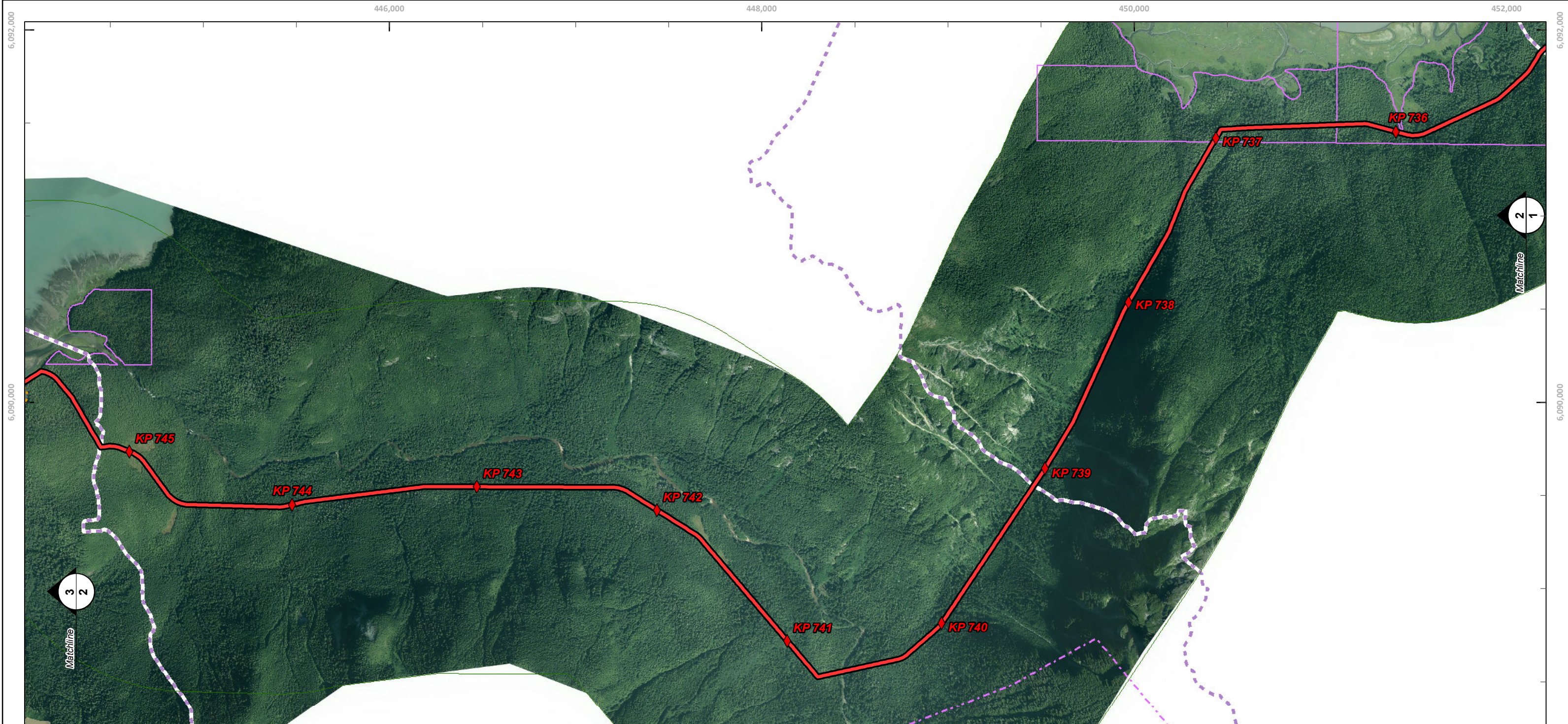
B.C.G.S.: 1031.091/092, 103J.090/100

DISCLAIMER: All rights reserved. This map contains confidential and proprietary information. Data contained herein is compiled and confirmed from many sources (private and public), including (but not limited to) Forest MapView and iMapBC. It is subject to change without notification and is provided on an "as is" basis. Focus Surveys (BC) Limited Partnership and its employees take no responsibility for the accuracy or completeness of this information. Content should be reviewed and verified by users.

Rev	Revision Description	Date	JOB NO.: 010042349	REVISION
00	Original Issue	1-Apr-2014	FOCUS FILE NO.: 130275CMFN06R01	01
B	Route Update	29-Jul-2014	CLIENT FILE NO.:	
01	Route Update	11-Aug-2014	ROUTE REF NO.: 9003	CHECKED:
			REF DWG NO.: 130275CON06-REV00.dwg	AFE:
			DATE: Aug 11, 2014	SHEET: 1 of 4

IMAGE: 2013





6,092,000  
6,090,000  
6,088,000

446,000 448,000 450,000 452,000

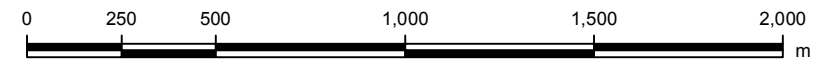
6,092,000  
6,090,000  
6,088,000

PROJECT FEATURES	TRANSPORTATION	FORESTRY	MISCELLANEOUS
Proposed Features (9003)	Highway	Cutblock	Coal Tenure
<b>OIL AND GAS</b>	Paved Road	Forest Cover Reserve	Mineral Tenure
Ground Disturbance/Leases	Highgrade Gravel	Community Forests	Mineral Reserve
Pipeline	Lowgrade Gravel	Woodlots	Site "C" HCA Permit
<b>CROWN TENURES</b>	Winter Road	Tree Farm License	Recreation Protected
Waterpower	Cutline/Trail	Old Growth Management Area	Grazing Tenure
Windpower	Forestry Road	Protected Area/ Ecological Reserve	Statement of Intent Boundary
Agriculture	Rec Trail	Provincial Park	
Env. Conserv. & Rec.	Railway	Recreation Area	
Industrial	<b>MUNICIPAL</b>	Vehicle Closure Area	
Communication	Municipality		
Watershed	Large Municipality		
Utility	First Nations Reserve		
Transportation	Parcel		
Electric Power Line			
Quarrying			



**Prince Rupert Gas Transmission Project**  *In business to deliver*

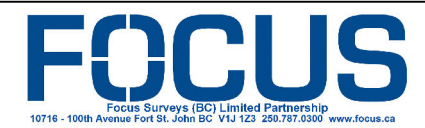
**1:20,000 MAP SHOWING PROPOSED PIPELINE ROUTE (APPLICATION SECTION 6) KP 726.59 TO KP 759.94**



SCALE 1:20,000 (NAD 1983 UTM ZONE 9N)

B.C.G.S.: 1031.091/092, 103J.090/100

DISCLAIMER: All rights reserved. This map contains confidential and proprietary information. Data contained herein is compiled and confirmed from many sources (private and public), including (but not limited to) Forest MapView and iMapBC. It is subject to change without notification and is provided on an "as is" basis. Focus Surveys (BC) Limited Partnership and its employees take no responsibility for the accuracy or completeness of this information. Content should be reviewed and verified by users.

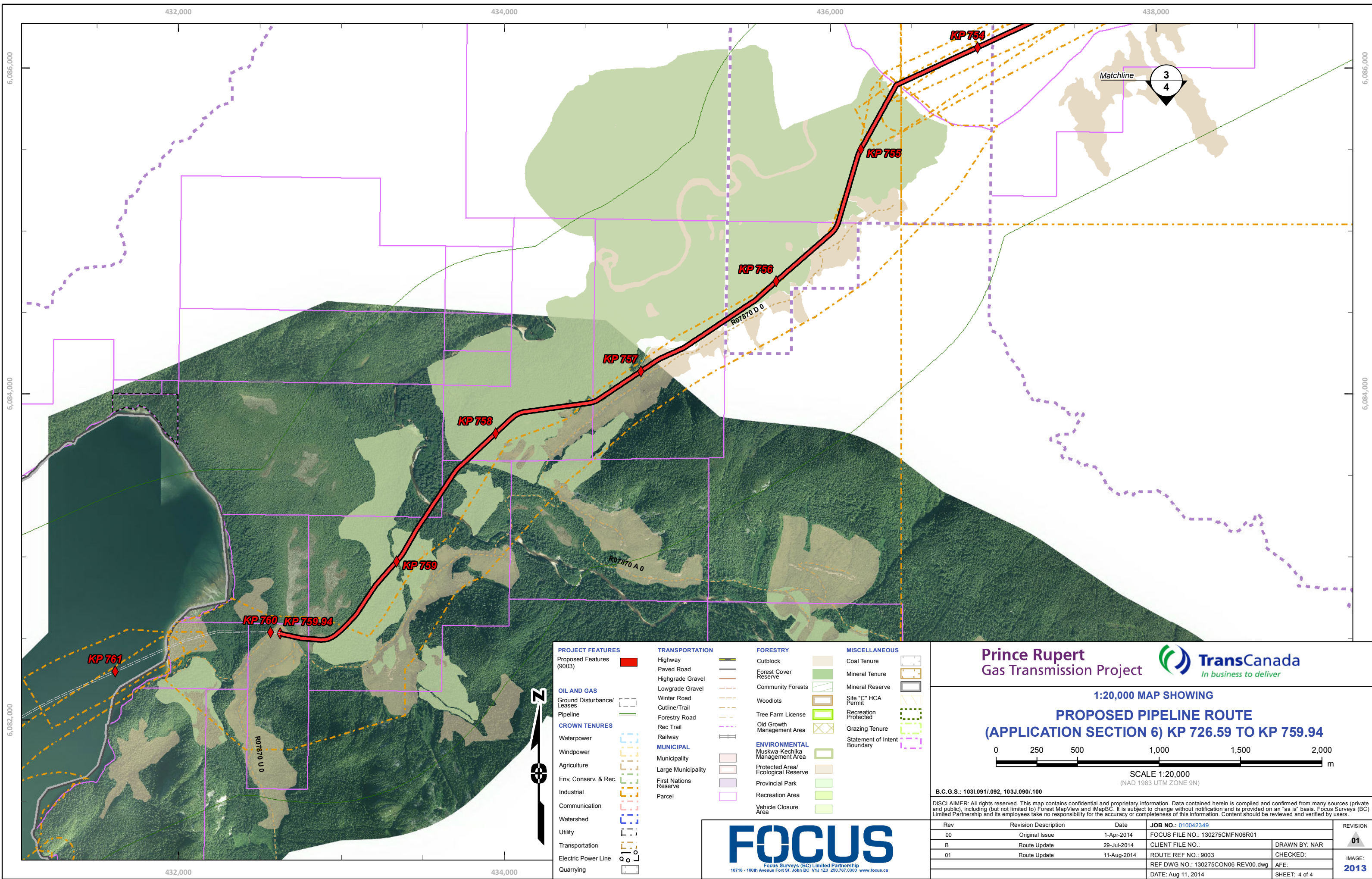


Rev	Revision Description	Date	JOB NO.: 010042349	REVISION
00	Original Issue	1-Apr-2014	FOCUS FILE NO.: 130275CMFN06R01	01
B	Route Update	29-Jul-2014	CLIENT FILE NO.:	
01	Route Update	11-Aug-2014	ROUTE REF NO.: 9003	
			REF DWG NO.: 130275CON06-REV00.dwg	CHECKED:
			DATE: Aug 11, 2014	AFE:
				IMAGE: 2013
				SHEET: 2 of 4









PROJECT FEATURES	TRANSPORTATION	FORESTRY	MISCELLANEOUS
Proposed Features (9003)	Highway	Cutblock	Coal Tenure
OIL AND GAS	Paved Road	Forest Cover Reserve	Mineral Tenure
Ground Disturbance/Leases	Highgrade Gravel	Community Forests	Mineral Reserve
Pipeline	Lowgrade Gravel	Woodlots	Site "C" HCA Permit
CROWN TENURES	Winter Road	Tree Farm License	Recreation Protected
Waterpower	Outline/Trail	Old Growth Management Area	Grazing Tenure
Windpower	Forestry Road	ENVIRONMENTAL	Statement of Intent Boundary
Agriculture	Rec Trail	Muskwa-Kechika Management Area	
Env. Conserv. & Rec.	Railway	Protected Area/ Ecological Reserve	
Industrial	Municipality	Provincial Park	
Communication	Large Municipality	Recreation Area	
Watershed	Parcel	Vehicle Closure Area	
Utility			
Transportation			
Electric Power Line			
Quarrying			

**Prince Rupert  
Gas Transmission Project**

**1:20,000 MAP SHOWING  
PROPOSED PIPELINE ROUTE  
(APPLICATION SECTION 6) KP 726.59 TO KP 759.94**

SCALE 1:20,000  
(NAD 1983 UTM ZONE 9N)

**B.C.G.S.: 1031.091/092, 103J.090/100**

DISCLAIMER: All rights reserved. This map contains confidential and proprietary information. Data contained herein is compiled and confirmed from many sources (private and public), including (but not limited to) Forest MapView and iMapBC. It is subject to change without notification and is provided on an "as is" basis. Focus Surveys (BC) Limited Partnership and its employees take no responsibility for the accuracy or completeness of this information. Content should be reviewed and verified by users.

Rev	Revision Description	Date	JOB NO.: 010042349	REVISION
00	Original Issue	1-Apr-2014	FOCUS FILE NO.: 130275CMFN06R01	<b>01</b>
B	Route Update	29-Jul-2014	CLIENT FILE NO.:	
01	Route Update	11-Aug-2014	ROUTE REF NO.: 9003	
			REF DWG NO.: 130275CON06-REV00.dwg	CHECKED:
			DATE: Aug 11, 2014	AFE:
				IMAGE:
				<b>2013</b>
				SHEET: 4 of 4

