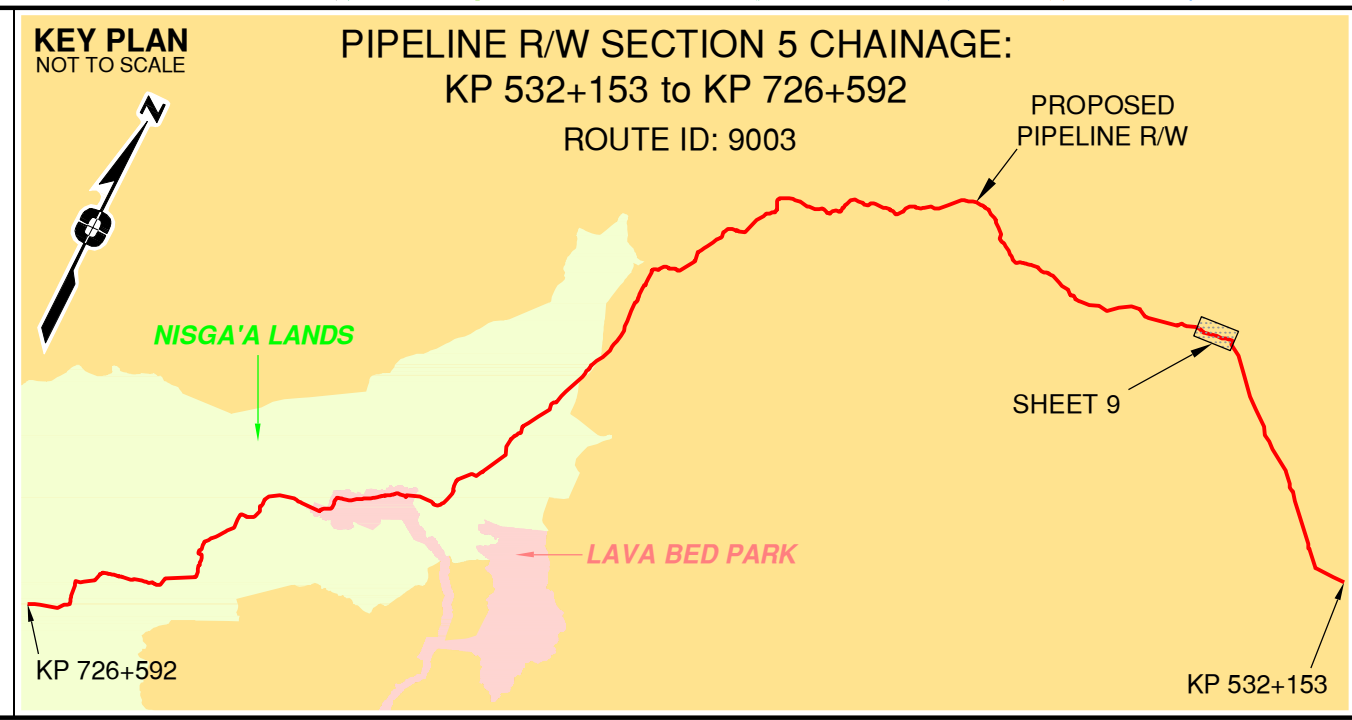


Rev	Revision Description	Date(Y/M/D)	By
0	Original Plan Prepared	2014/09/19	DC
1	Construction Plan Based on Rev.0 (2014/09/12) Except for New Construction Corridor: Shape, Label, Area Table & ePass Corrected Area on (S1)	2014/12/31	DC

NOTES:

- Co-ordinates are NAD 83 Grid, UTM Zone 9 and Zone 10. Distances shown are in metres and decimals thereof. Chainages are two-dimensional and are on pipeline ditchline. Pipeline segment length derived from ditchline chainages.
- Fault Lines data has been provided from BGC Engineering Inc. Desktop Study dated December 20, 2013.
- Water crossing information has been provided by Stantec. Wetlands data has been provided by Stantec dated August 29, 2014. Freshwater Atlas wetlands outside of construction corridor have been removed from scenery.
- Cutblock data is confirmed using information from the Government of BC websites for Forest MapView and MapBC.
- This pipeline section is partially within the Agricultural Land Reserve.
- Field Survey Completed July 15, 2014
- This plan represents the best information available at the time of survey. Focus Surveys and its employees take no responsibility for the location of any underground conduits, pipes, or other facilities whether shown on or omitted from this plan. All underground installations should be located by the respective authorities prior to construction.

LEGEND
Proposed Pipeline R/W shown thus:
Proposed Temp. Workspaces shown thus:
Proposed Log Decks & Storage Sites shown thus:
Right of Way shown thus:
Roads shown thus:
Highway shown thus:
Railway line shown thus:
Seismic line/trail shown thus:
Recreation Tenure shown thus:
Drainages shown thus:
Buried cable shown thus:
Buried pipe shown thus:
Overhead powerline shown thus:
Forest Cover Reserve shown thus:
Archaeological site shown thus:
Agricultural Land Reserve shown thus:
Coal Tenure by shown thus:
Cutblock by shown thus:
Fence by shown thus:
Fish/Wildlife Reserve bdy shown thus:
Grazing Tenure bdy shown thus:
Mineral Claim bdy shown thus:
Tree Farm Licence shown thus:
Quarry Reserve bdy shown thus:
Ungulate Winter Range bdy shown thus:
Visual Land Inventory shown thus:
Watershed Reserve bdy shown thus:
Wind Tenure bdy shown thus:
Woodlot bdy shown thus:
Fault Line shown thus:
Misc. Reserve/Notation bdy shown thus:
Misc. Licence/Permit bdy shown thus:
Riparian Reserve Zone shown thus:
Crossings shown thus:
Forest Cover Reserve shown thus:
Archaeological site shown thus:
Residences shown thus:
Nisga'a Lands shown thus:
Nisga'a Village Lands shown thus:
Lava Bed Park shown thus:



APPROVED BY
PROJECT ENGINEER

No.	STATION	DESCRIPTION	OWNER
T00469	(S1) 565+281	Forest Service Road (Kuldoo) / HGGR / FSR 7871 01	N 6166359 E 563906 Dist. Manager Skeena Stikine
W01802	(S1) 564+661	Trib to Cullon Creek / Beaver Dam Complex / RRZ=30 RMZ=20	N 6166197 E 564494 ILMB
W01799	(S1) 564+398	Trib to Cullon Creek / Non-classified drainage / RRZ=0 RMZ=0	N 6166230 E 564755 ILMB
W01798	(S1) 564+096	Trib to Cullon Creek / Non-classified drainage / RRZ=0 RMZ=0	N 6166268 E 565055 ILMB
W01797	(S1) 563+845	Trib to Cullon Creek / Non-classified drainage / RRZ=0 RMZ=0	N 6166299 E 565304 ILMB
W01796	(S1) 563+716	Trib to Cullon Creek / Non-classified drainage / RRZ=0 RMZ=0	N 6166315 E 565432 ILMB
W02217	(S1) 562+731	Trib to Tahtlum Creek / Non-classified drainage / RRZ=0 RMZ=0	N 6166354 E 566413 ILMB
T00468	(S1) 562+631	Trail / Condition Unknown	N 6166364 E 566511 Crown
W01801	(S1) 562+564	Trib to Tahtlum Creek / S6 / RRZ=0 RMZ=20	N 6166386 E 566574 ILMB
W01800	(S1) 562+501	Trib to Tahtlum Creek / S2 / RRZ=30 RMZ=20	N 6166407 E 566634 ILMB
W02867	(S1) 562+400	Trib to Tahtlum Creek / S4 / RRZ=0 RMZ=30	N 6166441 E 566729 ILMB
W02868	(S1) 562+285	Trib to Tahtlum Creek / S4 / RRZ=0 RMZ=30	N 6166480 E 566837 ILMB
W02793	(S1) 562+089	Trib to Tahtlum Creek / S4 / RRZ=0 RMZ=30	N 6166501 E 567032 ILMB
W02794	(S1) 561+918	Trib to Tahtlum Creek / S4 / RRZ=0 RMZ=30	N 6166513 E 567203 ILMB

Prince Rupert Gas Transmission Project

PRINCE RUPERT GAS TRANSMISSION LTD.

PROPOSED VARIABLE WIDTH (32 to 90m) PIPELINE R/W FROM d-59-I, 93-M-5 TO c-71-D, 103-P-3 (S1), c-71-D TO d-63-D, 103-P-3 (S2 & S3) & FROM d-63-D, 103-P-3 TO a-71-J, 103-I-13 (S4) (SHEET CHAINAGE: 561+652 TO 565+287)

Unsurveyed Crown Land/Crown Land/Private Land/Nisga'a Lands & Village Lands/Lava Bed Park/Cassiar District & Range 5 Coast District

The intended plot size of this plan is 864mm in width by 560mm in height when plotted at a scale of 1: 5000 (use D size sheet)

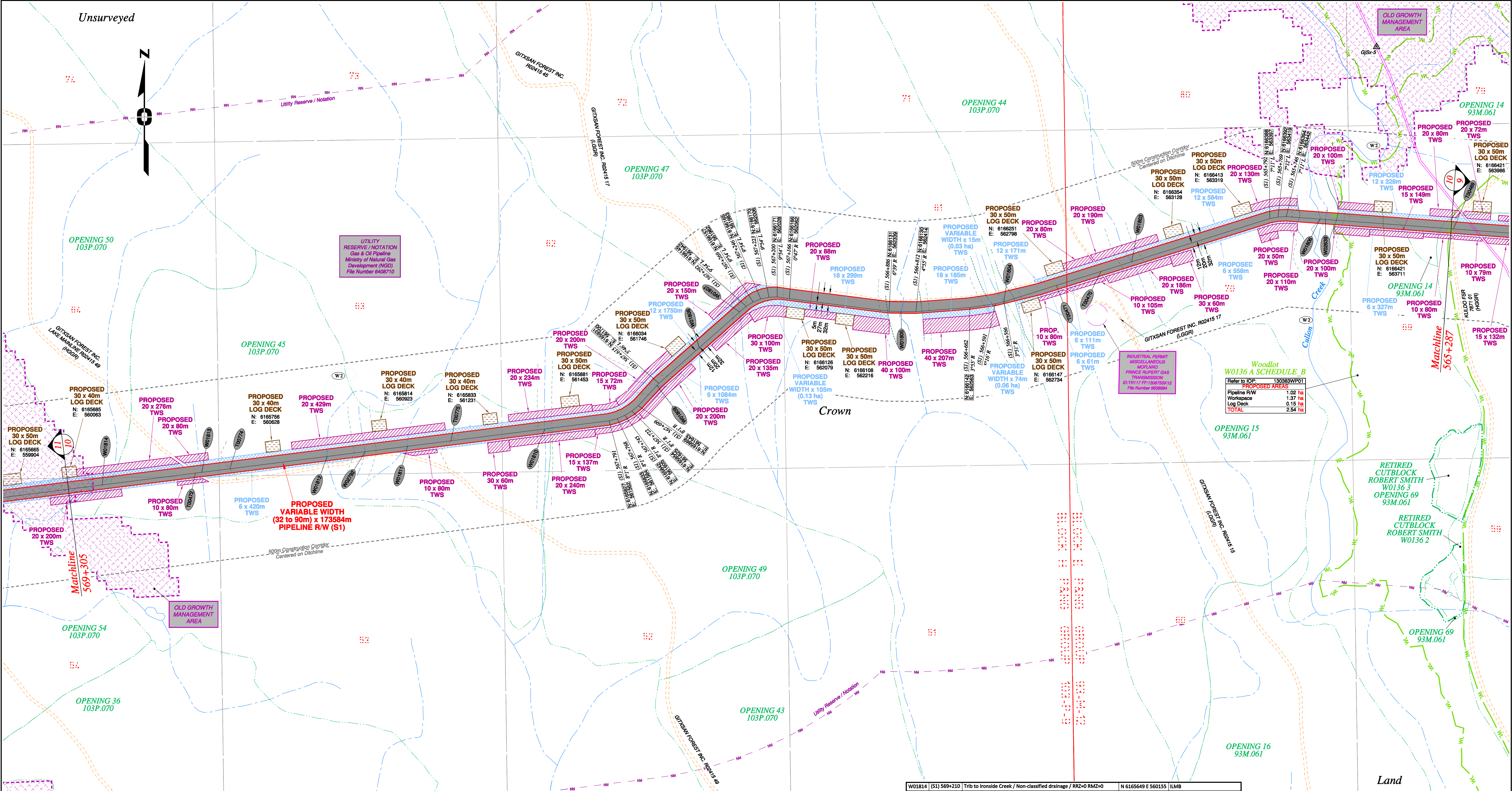
BCGS:1031.092/93.93M.042/51/52/61.103P.003/04/14/15/25/26/36/46/56/67/68/69/70

Sheet 9 of 49

FOCUS Focus Surveys (BC) Limited Partnership 10716 - 100th Avenue Fort St John BC V1J 1Z3 250.787.0300 www.focus.ca

FOCUS: 130275CP05R1
AFE: 5005948
TCPL: 004776-09-ML-03-145
ePASS: 10048852

REV. 1

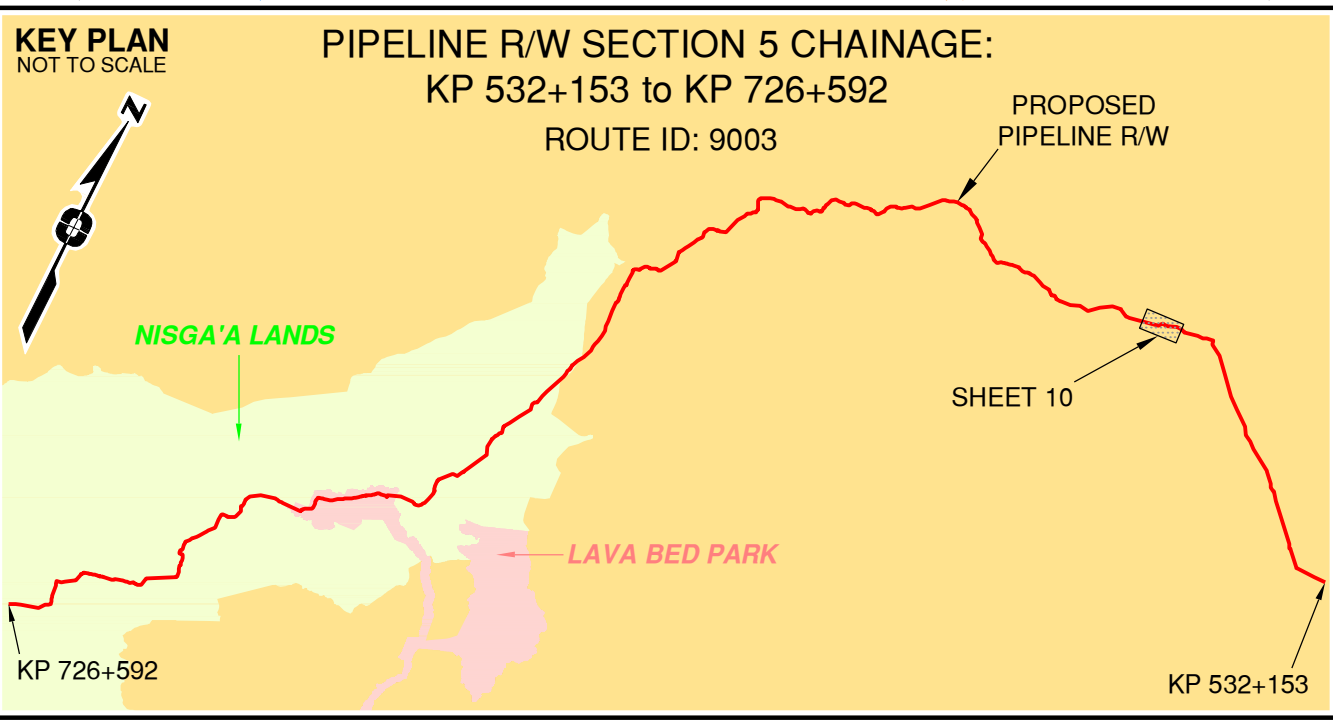


Rev	Revision Description	Date(Y/M/D)	By
0	Original Plan Prepared	2014/09/19	DC
1	Construction Plan Based on Rev.0 (2014/09/12) Except for New Construction Corridor: Shape, Label, Area Table & ePass Corrected Area on (S1)	2014/12/31	DC

NOTES:

- Co-ordinates are NAD 83 Grid, UTM Zone 9 and Zone 10. Distances shown are in metres and decimals thereof. Chainages are two-dimensional and are on pipeline ditchline. Pipeline segment length derived from ditchline chainages.
- Fault Lines data has been provided from BGC Engineering Inc. Desktop Study dated December 20, 2013.
- Water crossing information has been provided by Stantec. Wetlands data has been provided by Stantec dated August 29, 2014. Freshwater Atlas wetlands outside of construction corridor have been removed from scenery.
- Cutblock data is confirmed using information from the Government of BC websites for Forest MapView and MapBC.
- This pipeline section is partially within the Agricultural Land Reserve.
- Field Survey Completed July 15, 2014
- This plan represents the best information available at the time of survey. Focus Surveys and its employees take no responsibility for the location of any underground conduits, pipes, or other facilities whether shown on or omitted from this plan. All underground installations should be located by the respective authorities prior to construction.

LEGEND
Proposed Pipeline R/W shown thus:
Proposed Temp. Workspaces shown thus:
Proposed Log Decks & Storage Sites shown thus:
Right of Way shown thus:
Roads shown thus:
Highway shown thus:
Railway line shown thus:
Seismic line/trail shown thus:
Drainages shown thus:
Buried cable shown thus:
Buried pipe shown thus:
Overhead powerline shown thus:
Forest Cover Reserve shown thus:
Archaeological site shown thus:
Agricultural Land Reserve shown thus:
Coal Tenure bdy shown thus:
Cutblock bdy shown thus:
Fence bdy shown thus:
Fish/Wildlife Reserve bdy shown thus:
Grazing Tenure bdy shown thus:
Mineral Claim bdy shown thus:
Tree Farm Licence shown thus:
Quarry Reserve bdy shown thus:
Ungulate Winter Range bdy shown thus:
Visual Land Inventory shown thus:
Watershed Reserve bdy shown thus:
Wind Tenure bdy shown thus:
Woodlot bdy shown thus:
Misc. Reserve/Notation bdy shown thus:
Misc. Licence/Permit bdy shown thus:
Stantec Wetland / Classification shown thus:
Crossings shown thus:
Residences shown thus:
Nisga'a Lands shown thus:
Nisga'a Village Lands shown thus:
Lava Bed Park shown thus:



APPROVED BY
PROJECT ENGINEER

No.	STATION	DESCRIPTION	OWNER
W01814	(S1) 569+210	Trib to Ironside Creek / Non-classified drainage / RRZ=0 RMZ=0	N 6165649 E 560155 ILMB
W00472	(S1) 568+950	Forestry Road (Lake Mainline) / HGGR / R02415 49	N 6165682 E 560413 Gitksan Forest Inc.
W01813	(S1) 568+932	Trib to Ironside Creek / No visible channel / RRZ=0 RMZ=0	N 6165684 E 560431 ILMB
T00774	(S1) 568+854	Trail / Condition Unknown	N 6165694 E 560509 Crown
W01812	(S1) 568+581	Trib to Ironside Creek / Non-classified drainage / RRZ=0 RMZ=0	N 6165728 E 560779 ILMB
W02792	(S1) 568+475	Trib to Ironside Creek / S4 / RRZ=0 RMZ=30	N 6165741 E 560885 ILMB
W01811	(S1) 568+356	Trib to Ironside Creek / Non-classified drainage / RRZ=0 RMZ=0	N 6165756 E 561002 ILMB
T00775	(S1) 568+235	Trail / Condition Unknown	N 6165772 E 561122 Crown
W01810	(S1) 567+972	Trib to Ironside Creek / S6 / RRZ=0 RMZ=20	N 6165805 E 561383 ILMB
W01809	(S1) 567+623	Trib to Ironside Creek / RRZ=0 RMZ=30	N 6165925 E 561695 ILMB
W01808	(S1) 567+466	Trib to Ironside Creek / No visible channel / RRZ=0 RMZ=0	N 6166030 E 561812 ILMB
W01807	(S1) 567+317	Trib to Ironside Creek / S6 / RRZ=0 RMZ=20	N 6166129 E 561924 ILMB
W01806	(S1) 566+854	Trib to Kispiox River / S2 / RRZ=30 RMZ=20	N 6166131 E 562372 ILMB
W01804	(S1) 566+567	Trib to Cullon Creek / RRZ=30 RMZ=20	N 6166157 E 562657 ILMB
T00471	(S1) 566+414	Forestry Road / LGGR / R02415 17	N 6166203 E 562804 Gitksan Forest Inc.
T00470	(S1) 566+384	Forestry Road / LGGR / R02415 15	N 6166242 E 562928 Gitksan Forest Inc.
W01803	(S1) 566+195	Trib to Cullon Creek / RRZ=0 RMZ=30	N 6166268 E 563013 ILMB
W01806	(S1) 565+653	Cullon Creek / S2 / RRZ=30 RMZ=20	N 6166356 E 563536 ILMB
W02639	(S1) 565+638	Cullon Creek / S2 / RRZ=30 RMZ=20	N 6166386 E 563551 ILMB
No.	STATION	DESCRIPTION	OWNER

TABLE OF CROSSINGS

Prince Rupert Gas Transmission Project

PRINCE RUPERT GAS TRANSMISSION LTD.

PROPOSED VARIABLE WIDTH (32 to 90m) PIPELINE R/W FROM d-59-I, 93-M-5 TO c-71-D, 103-P-3 (S1), c-71-D TO d-63-D, 103-P-3 (S2 & S3) & FROM d-63-D, 103-P-3 TO a-71-J, 103-I-13 (S4) (SHEET CHAINAGE: 565+287 TO 569+305)

Unsurveyed Crown Land/Crown Land/Private Land/Nisga'a Lands & Village Lands/Lava Bed Park/Cassiar District & Range 6 Coast District

The intended plot size of this plan is 884mm in width by 580mm in height when plotted at a scale of 1: 5000 (use D size sheet)

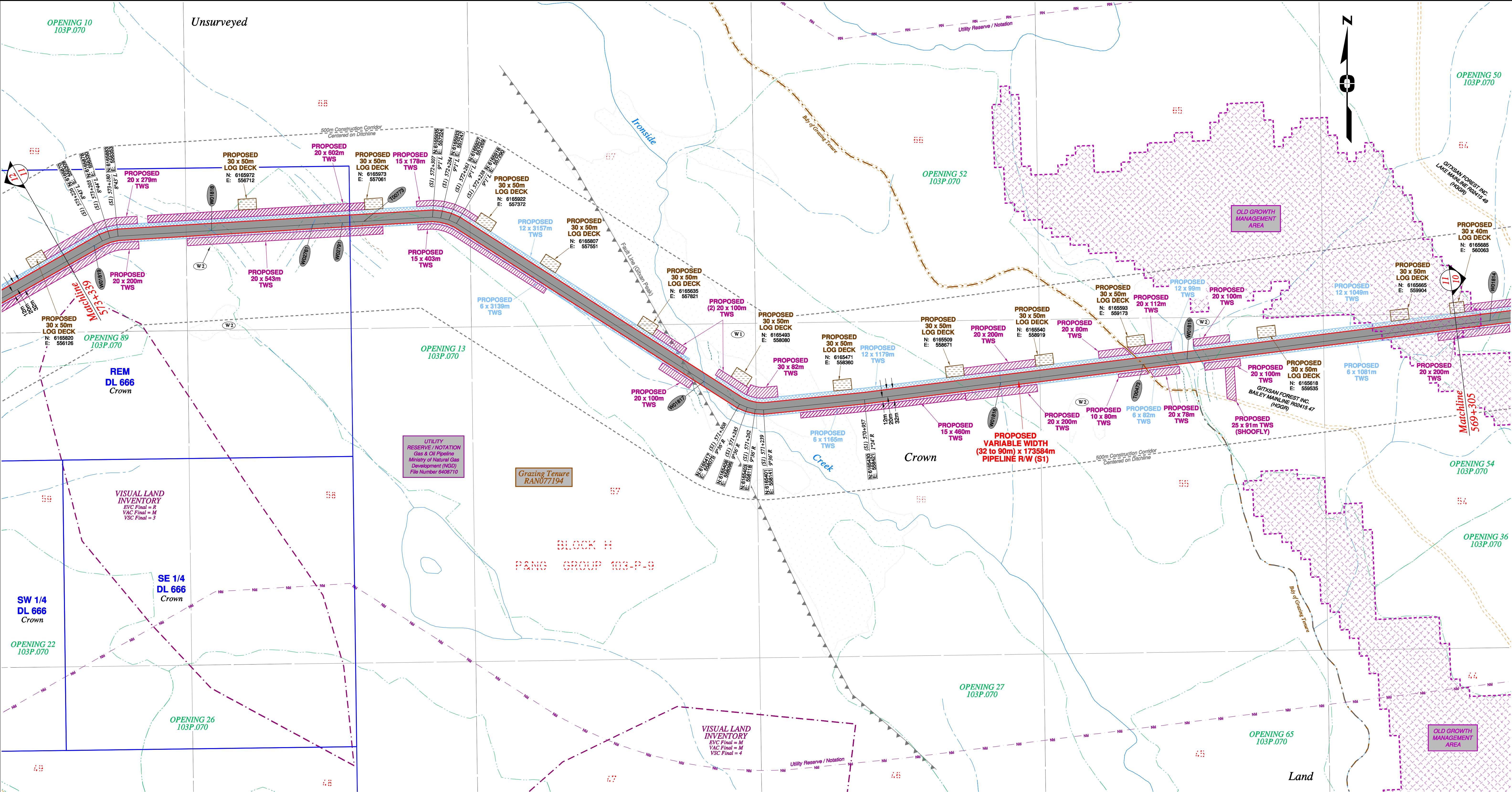
BCGS:1031.092/93.93M.042/51/52/61.103P.003/04/14/15/25/26/36/46/56/67/68/69/70

Sheet 10 of 49

FOCUS
Focus Surveys (BC) Limited Partnership
10715 - 100th Avenue Fort St. John BC
V1J 1Z3 250.787.0300 www.focus.ca

FOCUS:
AFPE: 130275CPO5R1
TCPL: 004776-09-ML-03-146
ePASS: 10048852

REV. 1

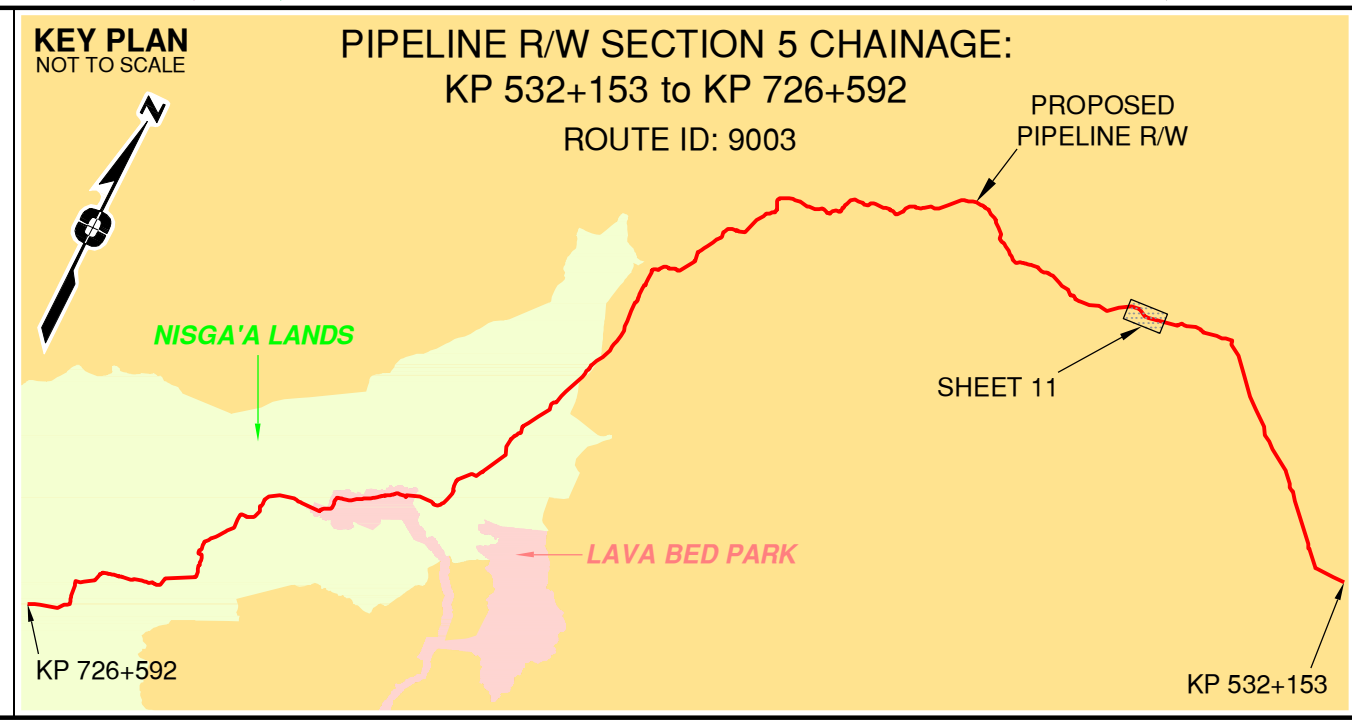


Rev	Revision Description	Date(Y/M/D)	By
0	Original Plan Prepared	2014/09/19	DC
1	Construction Plan Based on Rev.0 (2014/09/12) Except for New Construction Corridor: Shape, Label, Area Table & ePass Corrected Area on (S1)	2014/12/31	DC

NOTES:

- Co-ordinates are NAD 83 Grid, UTM Zone 9 and Zone 10. Distances shown are in metres and decimals thereof. Chainages are two-dimensional and are on pipeline ditchline. Pipeline segment length derived from ditchline chainages.
- Fault Lines data has been provided from BGC Engineering Inc. Desktop Study dated December 20, 2013.
- Water crossing information has been provided by Stantec. Wetlands data has been provided by Stantec dated August 29, 2014. Freshwater Atlas wetlands outside of construction corridor have been removed from scenery.
- Cutblock data is confirmed using information from the Government of BC websites for Forest MapView and MapBC.
- This pipeline section is partially within the Agricultural Land Reserve.
- Field Survey Completed July 15, 2014
- This plan represents the best information available at the time of survey. Focus Surveys and its employees take no responsibility for the location of any underground conduits, pipes, or other facilities whether shown on or omitted from this plan. All underground installations should be located by the respective authorities prior to construction.

LEGEND	
Proposed Pipeline R/W shown thus:	Fish/Wildlife Reserve bdy shown thus:
Proposed Temp. Workspaces shown thus:	Grazing Tenure bdy shown thus:
Proposed Log Decks & Storage Sites shown thus:	Mineral Claim bdy shown thus:
Right of Way shown thus:	Tree Farm Licence shown thus:
Roads shown thus:	Quarry Reserve bdy shown thus:
Highway shown thus:	Ungulate Winter Range bdy shown thus:
Railway line shown thus:	Visual Land Inventory shown thus:
Seismic line/trail shown thus:	Watershed Reserve bdy shown thus:
Recreation Tenure shown thus:	Wind Tenure bdy shown thus:
Drainages shown thus:	Woodlot bdy shown thus:
Buried cable shown thus:	Fault Line shown thus:
Buried pipe shown thus:	Misc. Reserve/Notation bdy shown thus:
Overhead powerline shown thus:	Misc. Licence/Permit bdy shown thus:
Riparian Reserve Zone shown thus:	Riparian Reserve Zone shown thus:
Riparian Management Zone shown thus:	Crossings shown thus:
Forest Cover Reserve shown thus:	Old Growth Management Area shown thus:
Archaeological site shown thus:	Residences shown thus:
Agricultural Land Reserve bdy shown thus:	Nisga'a Lands shown thus:
Coal Tenure bdy shown thus:	Nisga'a Village Lands shown thus:
Cutblock bdy shown thus:	Lava Bed Park shown thus:
Fence bdy shown thus:	



APPROVED BY _____

PROJECT ENGINEER _____

No.	STATION	DESCRIPTION	OWNER
W01819	(S1) 573+253	Trib to Kispiox River / Non-classified drainage / RRZ=0 RMZ=0	N 6165857 E 556286 ILMB
W01818	(S1) 572+922	Trib to Kispiox River / RRZ=0 RMZ=30	N 6165898 E 556612 ILMB
W02761	(S1) 572+640	Trib to Kispiox River / SA / RRZ=0 RMZ=30	N 6165915 E 556892 ILMB
W02791	(S1) 572+559	Trib to Kispiox River / SA / RRZ=0 RMZ=30	N 6165920 E 556974 ILMB
T00773	(S1) 571+499	Trail / Condition Unknown	N 6165924 E 557033 Crown
W01817	(S1) 571+425	Ironside Creek / S2 / RRZ=30 RMZ=20	N 6165480 E 557976 ILMB
W01816	(S1) 570+578	Trib to Ironside Creek / Non-classified drainage / RRZ=0 RMZ=0	N 6165478 E 558798 ILMB
T00473	(S1) 570+180	Forestry Road (Bailey Mainline) / HGGR / R02415 47	N 6165527 E 559193 Gitksan Forest Inc.
W01815	(S1) 570+057	Trib to Ironside Creek / Beaver Dam Complex / RRZ=30 RMZ=20	N 6165543 E 559315 ILMB

Prince Rupert Gas Transmission Project

PRINCE RUPERT GAS TRANSMISSION LTD.

PROPOSED VARIABLE WIDTH (32 to 90m) PIPELINE R/W FROM d-59-I, 93-M-5 TO c-71-D, 103-P-3 (S1), c-71-D TO d-63-D, 103-P-3 (S2 & S3) & FROM d-63-D, 103-P-3 TO a-71-J, 103-I-13 (S4) (SHEET CHAINAGE: 569+305 TO 573+339)

Unsurveyed Crown Land/Crown Land/Private Land/Nisga'a Lands & Village Lands/Lava Bed Park Cassiar District & Range 5 Coast District

The intended plot size of this plan is 864mm in width by 580mm in height when plotted at a scale of 1: 5000 (use D size sheet)

BCGS:1031.092/93.93M.042/51/52/61.103P.003/04/14/15/25/26/36/46/56/57/67/68/69/70

FOCUS
Focus Surveys (BC) Limited Partnership
10715 - 100th Avenue Fort St John BC
V1J 1Z3 250.787.0300 www.focus.ca

FOCUS: 130275CP05R1
AFPE: 5005948
TCPL: 004776-09-ML-03-147
ePASS: 10048852

Sheet 11 of 49

REV. 1

Rev	Revision Description	Date(Y/M/D)	By	LEGEND
0	Original Plan Prepared	2014/09/19	DC	<p>Proposed Pipeline R/W shown thus: ———</p> <p>Proposed Term: Workspaces shown thus: TW5 / TW5</p> <p>Proposed Log Decks & Storage Sites shown thus: [Symbol]</p> <p>Right of Way shown thus: ———</p> <p>Roads shown thus: ———</p> <p>Highway shown thus: ———</p> <p>Railway line shown thus: ———</p> <p>Visual line/trail shown thus: ———</p> <p>Watershed Reserve body shown thus: ———</p> <p>Recreation Tenure shown thus: ———</p> <p>Drainages shown thus: ———</p> <p>Buried cable shown thus: ———</p> <p>Buried pipe shown thus: ———</p> <p>Overhead powerline shown thus: ———</p> <p>Riparian Reserve Zone shown thus: ———</p> <p>Riparian Management Zone shown thus: ———</p> <p>Forest Cover Reserve shown thus: ———</p> <p>Archaeological site shown thus: ———</p> <p>Agricultural Land Reserve body shown thus: ———</p> <p>Cat Tenure body shown thus: ———</p> <p>Outcrop body shown thus: ———</p> <p>Fence body shown thus: ———</p>
1	Construction Plan Based on Rev. 0 (2014/09/12) Except for New Construction Corridor: Shape, Label, Area Table & ePass Corrected Area on (S1)	2014/12/31	DC	<p>Fish/Wildlife Reserve body shown thus: ———</p> <p>Grazing Tenure body shown thus: ———</p> <p>Mineral Claim body shown thus: ———</p> <p>Tree Farm Licence shown thus: ———</p> <p>Quarry Reserve body shown thus: ———</p> <p>Ungulate Winter Range body shown thus: ———</p> <p>Visual Line Inventory shown thus: ———</p> <p>Watershed Reserve body shown thus: ———</p> <p>Wind Tenure body shown thus: ———</p> <p>Woodlot body shown thus: ———</p> <p>Fault Line shown thus: ———</p> <p>Misc: Reserve/Notation body shown thus: ———</p> <p>Misc: Licence/Permit body shown thus: ———</p> <p>Stancic Wellfield / Classification shown thus: ———</p> <p>Crossings shown thus: ———</p> <p>Old Growth Management Area shown thus: ———</p> <p>Residences shown thus: ———</p> <p>Nisga'a Lands shown thus: ———</p> <p>Nisga'a Village Lands shown thus: ———</p> <p>Lava Bed Park shown thus: ———</p>

NOTES:

- Co-ordinates are NAD 83 Grid, UTM Zone 9 and Zone 10. Distances shown are in metres and decimals thereof. Chainages are two-dimensional and are on pipeline ditchline. Pipeline segment length derived from ditchline chainages.
- Fault Lines data has been provided from BGC Engineering Inc. Desktop Study dated December 20, 2013.
- Water crossing information has been provided by Stantec. Wetlands data has been provided by Stantec dated August 29, 2014. Freshwater Atlas wetlands outside of construction corridor have been removed from scenery.
- Cutback data is confirmed using information from the Government of BC websites for the MapView and MapBC.
- This pipeline section is partially within the Agricultural Land Reserve.
- Field Survey Completed July 15, 2014
- This plan represents the best information available at the time of survey. Focus Surveys and its employees take no responsibility for the location of any underground conduits, pipes, or other facilities whether shown on or omitted from this plan. All underground installations should be located by the respective authorities prior to construction.

KEY PLAN
NOT TO SCALE

PIPELINE R/W SECTION 5 CHAINAGE:
KP 532+153 to KP 726+592

ROUTE ID: 9003

PROPOSED PIPELINE R/W

SHEET 12

APPROVED BY

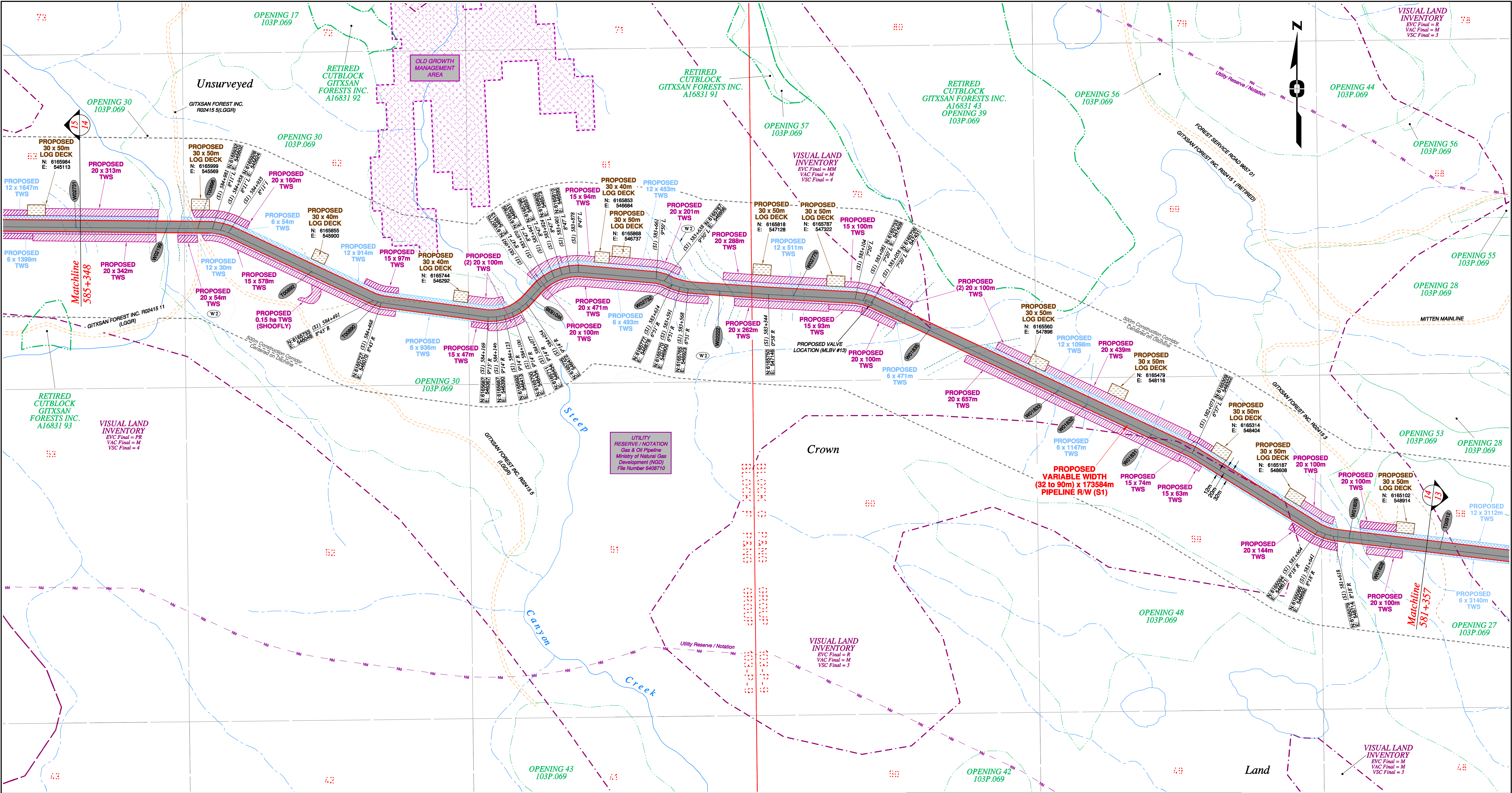
PROJECT ENGINEER

No.	STATION	DESCRIPTION	OWNER
T00480	(S1) 577+159	Forestry Road / LGRR / R02415 2	N 6164530 E 552836 Gitsan Forest Inc.
W01823	(S1) 577+114	Trib to Kispiox River / S5 / RR=0 RMZ=30	N 6164544 E 552879 ILMB
T00479	(S1) 577+026	Trail / Condition Unknown	N 6164570 E 552963 Crown
W01822	(S1) 576+628	Trib to Kispiox River / S6 / RR=0 RMZ=20	N 6164572 E 553350 ILMB
T00478	(S1) 576+363	Trail / Condition Unknown	N 6164521 E 553610 Crown
W02720	(S1) 576+171	Trib to Kispiox River / S4 / RR=0 RMZ=30	N 6164484 E 553798 ILMB
T00477	(S1) 576+058	Trail / Condition Unknown	N 6164463 E 553909 Crown
W01821	(S1) 575+995	Trib to Kispiox River / Non-classified drainage / RR=0 RMZ=0	N 6164450 E 553972 Crown
T00476	(S1) 575+898	Trail / Condition Unknown	N 6164435 E 554067 ILMB
T00475	(S1) 575+834	Trail / Condition Unknown	N 6164449 E 554128 Crown
W01820	(S1) 575+375	Kispiox River / S1 / RR=50 RMZ=20	N 6164722 E 554948 ILMB
T00474	(S1) 574+645	Kispiox Valley Road / Condition Unknown	N 6165158 E 555083 MOTI
T00908	(S1) 573+714	Trail / Condition Unknown	N 6165629 E 555885 Crown

TABLE OF CROSSINGS

FOCUS
Focus Surveys (BC) Limited Partnership
10715 - 100th Avenue, Fort St John BC
V1J 2J3 250.787.0300 www.focus.ca

130275CPO5R1
5005948
004776-09-ML-03-148
10048852

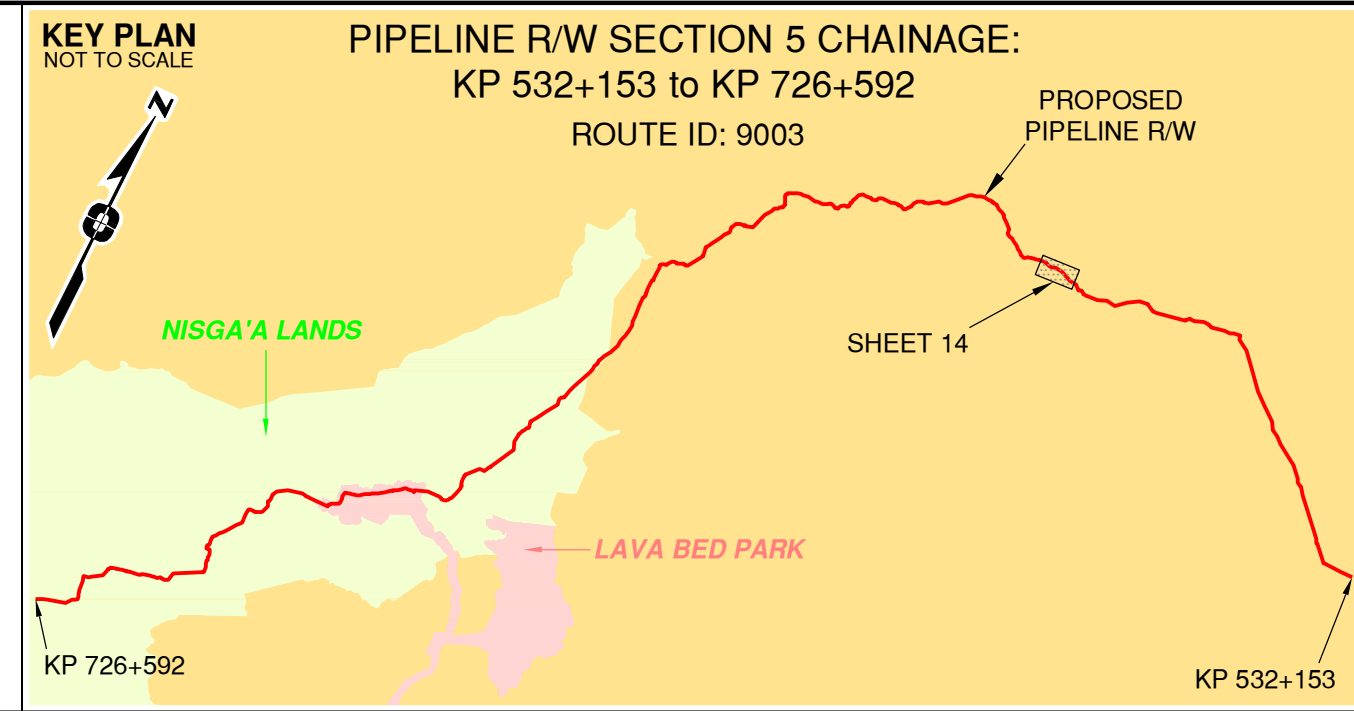


Rev	Revision Description	Date(Y/M/D)	By
0	Original Plan Prepared	2014/09/19	DC
1	Construction Plan Based on Rev.0 (2014/09/12) Except for New Construction Corridor: Shape, Label, Area Table & ePass Corrected Area on (S1)	2014/12/31	DC

NOTES:

- Co-ordinates are NAD 83 Grid, UTM Zone 9 and Zone 10. Distances shown are in metres and decimals thereof. Chainages are two-dimensional and are on pipeline ditchline. Pipeline segment length derived from ditchline chainages.
- Fault Lines data has been provided from BGC Engineering Inc. Desktop Study dated December 20, 2013.
- Water crossing information has been provided by Stantec. Wetlands data has been provided by Stantec dated August 29, 2014. Freshwater Atlas wetlands outside of construction corridor have been removed from scenery.
- Cutblock data is confirmed using information from the Government of BC websites for Forest MapView and MapBC.
- This pipeline section is partially within the Agricultural Land Reserve.
- Field Survey Completed July 15, 2014.
- This plan represents the best information available at the time of survey. Focus Surveys and its employees take no responsibility for the location of any underground conduits, pipes, or other facilities whether shown on or omitted from this plan. All underground installations should be located by the respective authorities prior to construction.

LEGEND
Proposed Pipeline R/W shown thus:
Proposed Temp. Workspaces shown thus:
Proposed Log Decks & Storage Sites shown thus:
Right of Way shown thus:
Roads shown thus:
Highway shown thus:
Railway line shown thus:
Seismic line/trail shown thus:
Drainages shown thus:
Buried cable shown thus:
Buried pipe shown thus:
Overhead powerline shown thus:
Riparian Reserve Zone shown thus:
Forest Cover Reserve shown thus:
Archaeological site shown thus:
Agricultural Land Reserve shown thus:
Coal Tenure bdy shown thus:
Cutblock bdy shown thus:
Fence bdy shown thus:
Fish/Wildlife Reserve bdy shown thus:
Grazing Tenure bdy shown thus:
Mineral Claim bdy shown thus:
Tree Farm Licence shown thus:
Quarry Reserve bdy shown thus:
Ungulate Winter Range bdy shown thus:
Visual Land Inventory shown thus:
Watershed Reserve bdy shown thus:
Wind Tenure bdy shown thus:
Woodlot bdy shown thus:
Fault Line shown thus:
Misc. Reserve/Notation bdy shown thus:
Misc. Licence/Permit bdy shown thus:
Stantec Wetland / Classification shown thus:
Riparian Management Zone shown thus:
Forest Cover Reserve shown thus:
Archaeological site shown thus:
Agricultural Land Reserve shown thus:
Coal Tenure bdy shown thus:
Cutblock bdy shown thus:
Fence bdy shown thus:



APPROVED BY	PROJECT ENGINEER
-------------	------------------

No.	STATION	DESCRIPTION	OWNER
W02199	(S1) 585+109	Beaverlodge Creek / S2 / RRZ=30 RMZ=20	N 6165933 E 545475 ILMB
T00896	(S1) 585+023	Forestry Road / LGGR / R02415 5	N 6165932 E 545561 Gitxsan Forest Inc.
T00892	(S1) 584+681	Trail / Condition Unknown	N 6165813 E 545877 Crown
T00890	(S1) 584+478	Trail / Condition Unknown	N 6165729 E 546062 Crown
W01838	(S1) 584+035	Steep Canyon Creek / S2 / RRZ=30 RMZ=20	N 6165739 E 546485 ILMB
W02732	(S1) 583+615	Trib to Bartok Creek / S4 / RRZ=30 RMZ=30	N 6165777 E 546878 ILMB
W02222	(S1) 583+481	Trib to Kispiox River / S2 / RRZ=30 RMZ=20	N 6165759 E 547010 ILMB
W02775	(S1) 583+276	Trib to Bartok Creek / S4 / RRZ=30 RMZ=30	N 6165746 E 547215 ILMB
W01835	(S1) 582+881	Trib to Kispiox River / S2 / RRZ=30 RMZ=20	N 6165651 E 547592 ILMB
W01833	(S1) 582+485	Trib to Kispiox River / Non-classified drainage / RRZ=0 RMZ=0	N 6165483 E 547950 ILMB
W01832	(S1) 582+396	Trib to Kispiox River / Non-classified drainage / RRZ=0 RMZ=0	N 6165445 E 548031 ILMB
W01831	(S1) 582+199	Trib to Kispiox River / Non-classified drainage / RRZ=0 RMZ=0	N 6165362 E 548209 ILMB
W01829	(S1) 581+575	Trib to Kispiox River / S3 / RRZ=20 RMZ=20	N 6165073 E 548758 ILMB
W01828	(S1) 581+455	Trib to Kispiox River / No visible channel / RRZ=0 RMZ=0	N 6165059 E 548876 ILMB

Prince Rupert Gas Transmission Project

PRINCE RUPERT GAS TRANSMISSION LTD.

PROPOSED VARIABLE WIDTH (32 to 90m) PIPELINE R/W FROM d-59-I, 93-M-5 TO c-71-D, 103-P-3 (S1), c-71-D TO d-63-D, 103-P-3 (S2 & S3) & FROM d-63-D, 103-P-3 TO a-71-J, 103-I-13 (S1) (SHEET CHAINAGE: 581+357 TO 585+348)

Unsurveyed Crown Land/Crown Land/Private Land/Nisga'a Lands & Village Lands/Lava Bed Park

Cassiar District & Range 5 Coast District

The intended plot size of this plan is 854mm in width by 580mm in height when plotted at a scale of 1: 5000 (use D size sheet)

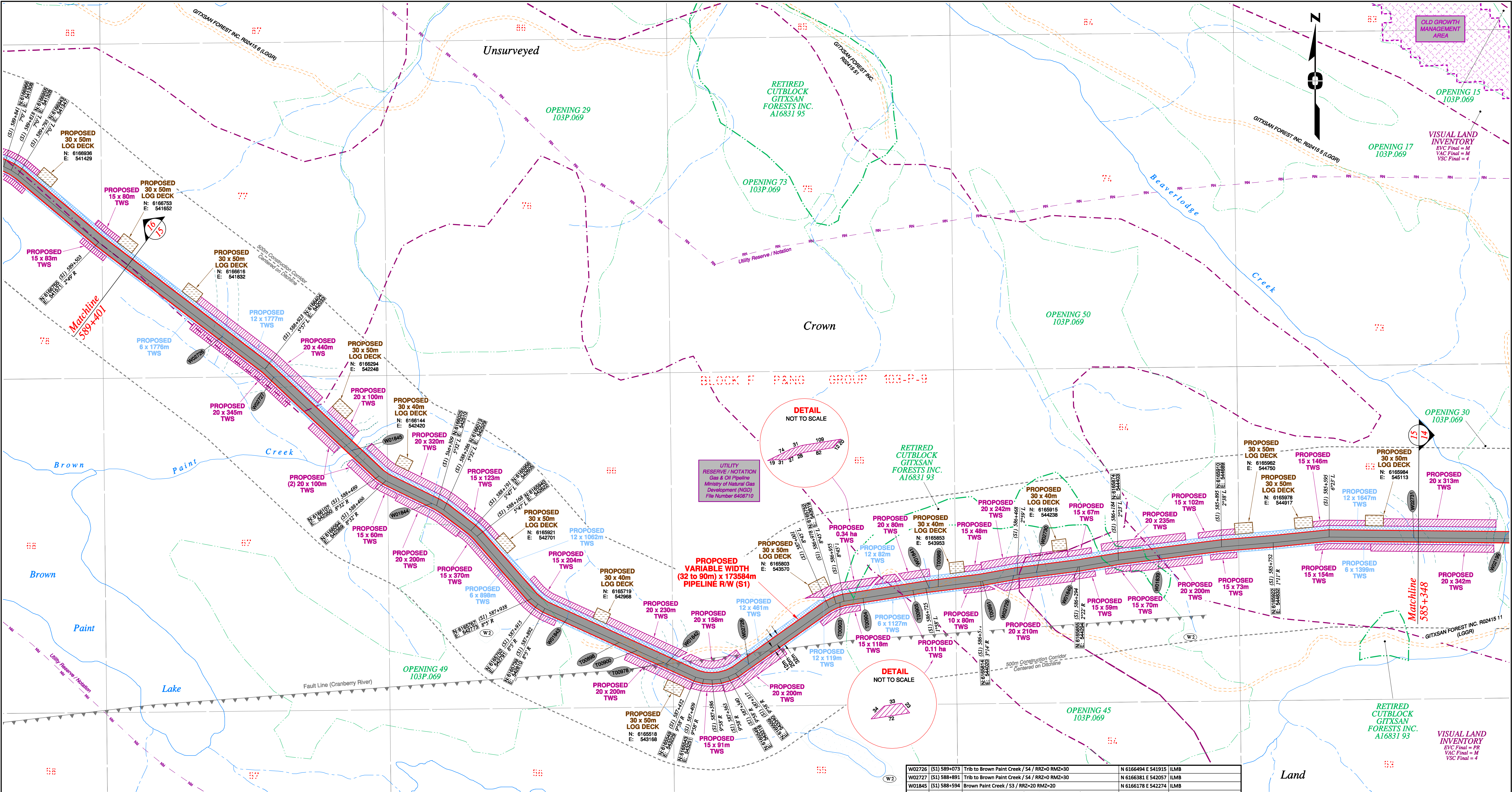
BCGS:1031.092/93.93M.042/51/52/61.103P.003/04/14/15/25/26/36/46/56/57/67/68/69/70

Sheet 14 of 49

FOCUS
Focus Surveys (BC) Limited Partnership
10715 - 100th Avenue Fort St. John BC
V1J 1Z3 250.787.0300 www.focus.ca

FOCUS:
AF#: 130275CP05R1
TCPL: 004776-09-ML-03-150
ePASS: 10048852

REV.
1

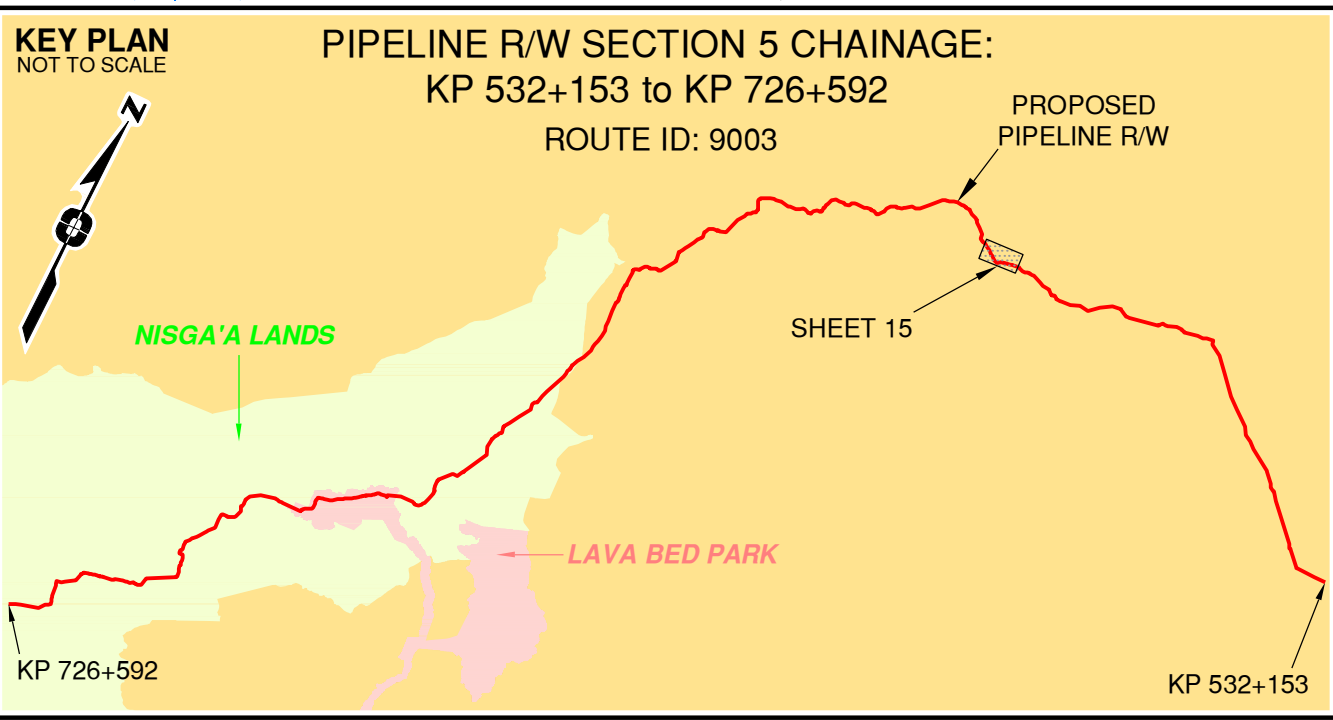


Rev	Revision Description	Date(Y/M/D)	By
0	Original Plan Prepared	2014/09/19	DC
1	Construction Plan Based on Rev.0 (2014/09/12) Except for New Construction Corridor: Shape, Label, Area Table & ePass Corrected Area on (S1)	2014/12/31	DC

NOTES:

- Co-ordinates are NAD 83 Grid, UTM Zone 9 and Zone 10. Distances shown are in metres and decimals thereof. Chainages are two-dimensional and are on pipeline ditchline. Pipeline segment length derived from ditchline chainages.
- Fault Lines data has been provided from BGC Engineering Inc. Desktop Study dated December 20, 2013.
- Water crossing information has been provided by Stantec. Wetlands data has been provided by Stantec dated August 29, 2014. Freshwater Atlas wetlands outside of construction corridor have been removed from scenery.
- Cutblock data is confirmed using information from the Government of BC websites for Forest MapView and MapBC.
- This pipeline section is partially within the Agricultural Land Reserve.
- Field Survey Completed July 15, 2014.
- This plan represents the best information available at the time of survey. Focus Surveys and its employees take no responsibility for the location of any underground conduits, pipes, or other facilities whether shown on or omitted from this plan. All underground installations should be located by the respective authorities prior to construction.

LEGEND
Proposed Pipeline R/W shown thus:
Proposed Temp. Workspaces shown thus:
Proposed Log Decks & Storage Sites shown thus:
Right of Way shown thus:
Roads shown thus:
Highway shown thus:
Railway line shown thus:
Seismic line/trail shown thus:
Drainages shown thus:
Buried cable shown thus:
Buried pipe shown thus:
Overhead powerline shown thus:
Forest Cover Reserve shown thus:
Archaeological site shown thus:
Agricultural Land Reserve body shown thus:
Coal Tenure body shown thus:
Cutblock body shown thus:
Fence body shown thus:
Fish/Wildlife Reserve body shown thus:
Grazing Tenure body shown thus:
Mineral Claim body shown thus:
Tree Farm Licence shown thus:
Quarry Reserve body shown thus:
Ungulate Winter Range body shown thus:
Visual Land Inventory shown thus:
Watershed Reserve body shown thus:
Wind Tenure body shown thus:
Woodlot body shown thus:
Fault Line shown thus:
Misc. Reserve/Notation body shown thus:
Misc. Licence/Permit body shown thus:
Riparian Reserve Zone shown thus:
Riparian Management Zone shown thus:
Forest Cover Reserve shown thus:
Archaeological site shown thus:
Agricultural Land Reserve body shown thus:
Coal Tenure body shown thus:
Cutblock body shown thus:
Fence body shown thus:



APPROVED BY

PROJECT ENGINEER

No.	STATION	DESCRIPTION	NAD 83 UTM ZONE 9	OWNER
W02726	(S1) 589+073	Trib to Brown Paint Creek / S4 / RRZ=0 RMZ=30	N 6166494 E 541915	ILMB
W02727	(S1) 588+891	Trib to Brown Paint Creek / S4 / RRZ=0 RMZ=30	N 6166381 E 542057	ILMB
W01845	(S1) 588+594	Brown Paint Creek / S3 / RRZ=20 RMZ=30	N 6166378 E 542274	ILMB
W01844	(S1) 588+324	Trib to Brown Paint Creek / Non-classified drainage / RRZ=0 RMZ=0	N 6166031 E 542496	ILMB
W01843	(S1) 587+825	Trib to Brown Paint Creek / No visible channel / RRZ=0 RMZ=0	N 6165711 E 542872	ILMB
T00898	(S1) 587+666	Forestry Road / LGGR / R02415 11	N 6165645 E 543016	Gitksan Forest Inc.
T00900	(S1) 587+611	Forestry Road / LGGR / R02415 11	N 6165623 E 543066	Gitksan Forest Inc.
T00978	(S1) 587+530	Forestry Road / LGGR / R02415 11	N 6165589 E 543141	Gitksan Forest Inc.
W01842	(S1) 587+523	Trib to Brown Paint Creek / S4 / RRZ=0 RMZ=30	N 6165586 E 543147	ILMB
W02728	(S1) 587+273	Trib to Brown Paint Creek / S4 / RRZ=0 RMZ=30	N 6165585 E 543376	ILMB
T00903	(S1) 586+967	Forestry Road / LGGR / R02415 11	N 6165756 E 543630	Gitksan Forest Inc.
T00904	(S1) 586+902	Forestry Road / LGGR / R02415 11	N 6165768 E 543693	Gitksan Forest Inc.
T00905	(S1) 586+762	Forestry Road / LGGR / R02415 11	N 6165790 E 543832	Gitksan Forest Inc.
W01841	(S1) 586+716	Trib to Beaverlodge Creek / No visible channel / RRZ=0 RMZ=0	N 6165797 E 543877	ILMB
T00989	(S1) 586+691	Forestry Road / LGGR / R02415 11	N 6165800 E 543902	Gitksan Forest Inc.
T00891	(S1) 586+567	Forestry Road / LGGR / R02415 11	N 6165815 E 544025	Gitksan Forest Inc.
W02729	(S1) 586+479	Trib to Beaverlodge Creek / S4 / RRZ=0 RMZ=30	N 6165831 E 544112	ILMB
W02730	(S1) 586+415	Trib to Beaverlodge Creek / S4 / RRZ=0 RMZ=30	N 6165840 E 544175	ILMB
W01840	(S1) 586+298	Trib to Beaverlodge Creek / No visible channel / RRZ=0 RMZ=0	N 6165855 E 544291	ILMB
W01839	(S1) 586+070	Trib to Beaverlodge Creek / Non-classified drainage / RRZ=0 RMZ=0	N 6165888 E 544516	ILMB
W02731	(S1) 585+361	Trib to Beaverlodge Creek / S4 / RRZ=0 RMZ=30	N 6165935 E 545223	ILMB

Prince Rupert Gas Transmission Project

TransCanada
In business to deliver

PRINCE RUPERT GAS TRANSMISSION LTD.

PROPOSED VARIABLE WIDTH (32 to 90m) PIPELINE R/W FROM d-59-I, 93-M-5 TO c-71-D, 103-P-3 (S1), c-71-D TO d-63-D, 103-P-3 (S2 & S3) & FROM d-63-D, 103-P-3 TO a-71-J, 103-I-13 (S4) (SHEET CHAINAGE: 585+348 TO 589+401)

Unsurveyed Crown Land/Crown Land/Private Land/Nisga'a Lands & Village Lands/Lava Bed Park/Cassiar District & Range 5 Coast District

The intended plot size of this plan is 864mm in width by 560mm in height when plotted at a scale of 1: 5000 (use D size sheet)

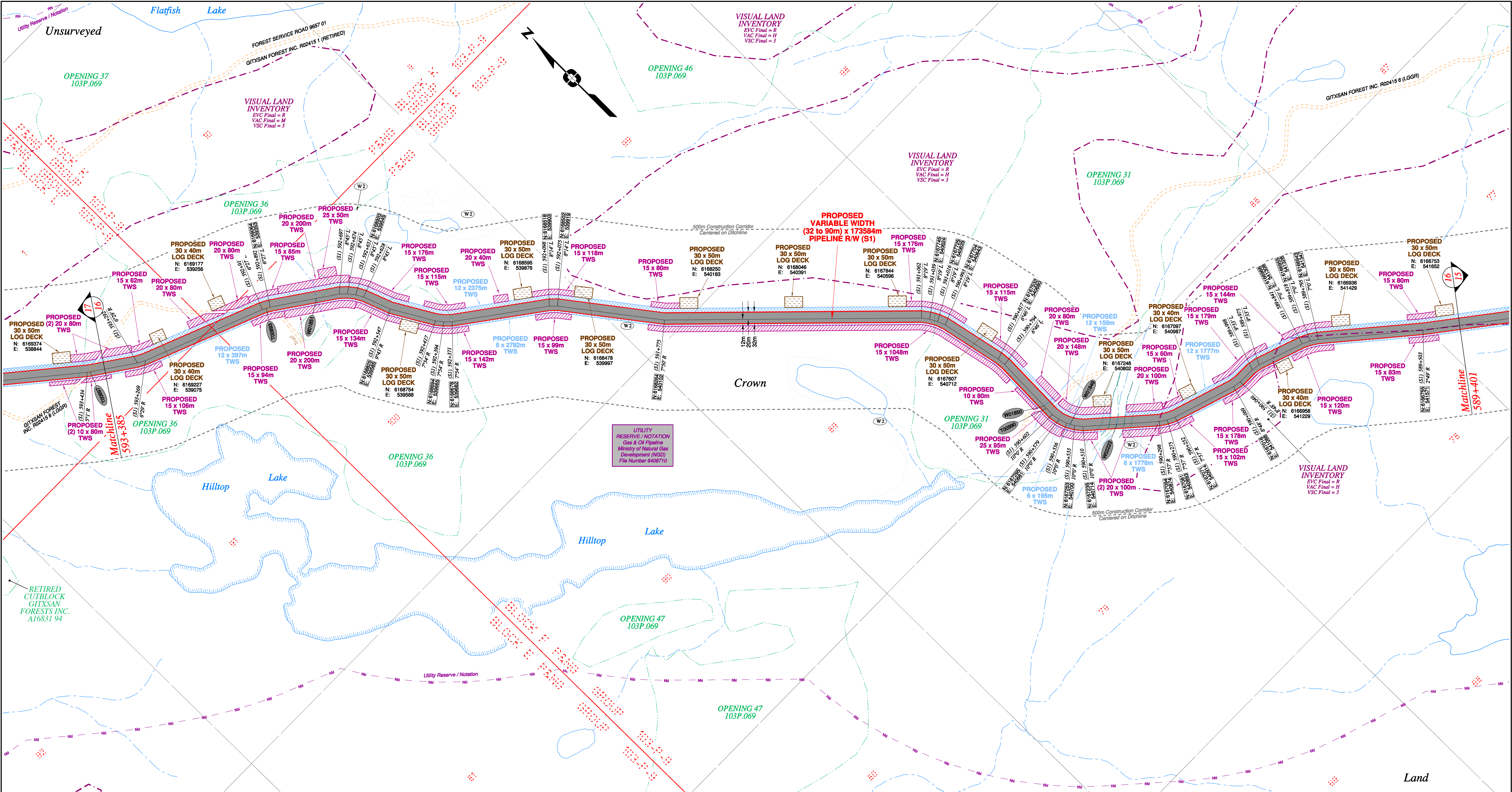
BCGS:1031.092/93.93M.042/51/52/61.103P.003/04/14/15/25/26/36/46/56/57/67/68/69/70

Sheet 15 of 49

FOCUS
Focus Surveys (BC) Limited Partnership
10715 - 100th Avenue, Fort St. John, BC
V1J 1Z3 250.787.0300 www.focus.ca

FOCUS:
AFE: 130275CPO5R1
TCPL: 004776-09-ML-03-151
ePASS: 10048852

REV. 1

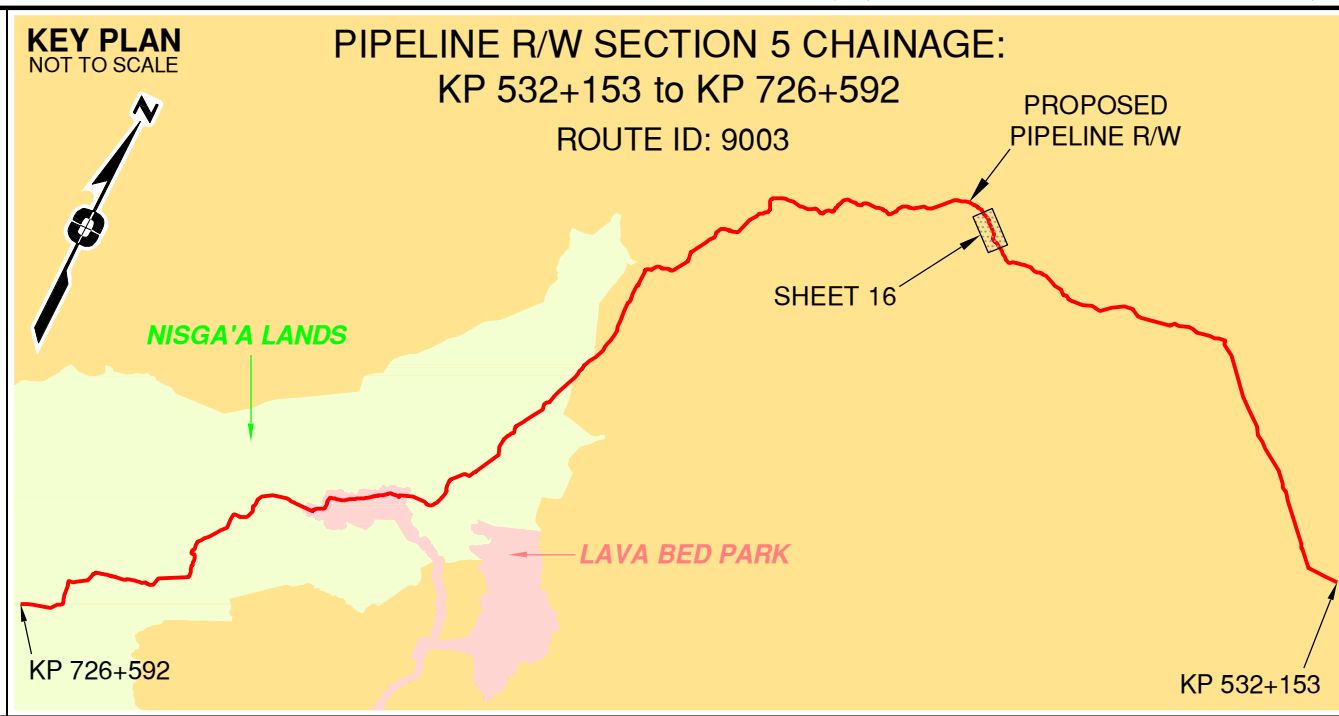


Rev	Revision Description	Date(Y/M/D)	By
0	Original Plan Prepared	2014/09/19	DC
1	Construction Plan Based on Rev.0 (2014/09/12) Except for New Construction Corridor: Shape, Label, Area Table & ePass Corrected Area on (S1)	2014/12/31	DC

NOTES:

- Co-ordinates are NAD 83 Grid, UTM Zone 9 and Zone 10. Distances shown are in metres and decimals thereof. Chainages are two-dimensional and are on pipeline ditchline. Pipeline segment length derived from ditchline chainages.
- Fault Lines data has been provided from BGC Engineering Inc. Desktop Study dated December 20, 2013.
- Water crossing information has been provided by Stantec. Wetlands data has been provided by Stantec dated August 29, 2014. Freshwater Atlas wetlands outside of construction corridor have been removed from scenery.
- Cutblock data is confirmed using information from the Government of BC websites for Forest MapView and MapBC.
- This pipeline section is partially within the Agricultural Land Reserve.
- Field Survey Completed July 15, 2014.
- This plan represents the best information available at the time of survey. Focus Surveys and its employees take no responsibility for the location of any underground conduits, pipes, or other facilities whether shown on or omitted from this plan. All underground installations should be located by the respective authorities prior to construction.

LEGEND
Proposed Pipeline R/W shown thus:
Proposed Temp. Workspaces shown thus:
Proposed Log Decks & Storage Sites shown thus:
Right of Way shown thus:
Roads shown thus:
Highway shown thus:
Railway line shown thus:
Seismic line/trail shown thus:
Recreation Tenure shown thus:
Drainages shown thus:
Buried cable shown thus:
Buried pipe shown thus:
Overhead powerline shown thus:
Riparian Reserve Zone shown thus:
Forest Cover Reserve shown thus:
Archaeological site shown thus:
Agricultural Land Reserve body shown thus:
Coal Tenure body shown thus:
Cutblock body shown thus:
Fence body shown thus:
Fish/Wildlife Reserve body shown thus:
Grazing Tenure body shown thus:
Mineral Claim body shown thus:
Tree Farm Licence shown thus:
Quarry Reserve body shown thus:
Ungulate Winter Range body shown thus:
Visual Land Inventory shown thus:
Watershed Reserve body shown thus:
Wind Tenure body shown thus:
Woodlot body shown thus:
Fault line shown thus:
Misc. Reserve/Notation body shown thus:
Misc. Licence/Permit body shown thus:
Stantec Wetland / Classification shown thus:
Crossings shown thus:
Old Growth Management Area shown thus:
Residences shown thus:
Nisga'a Lands shown thus:
Nisga'a Village Lands shown thus:
Lava Bed Park shown thus:



APPROVED BY
PROJECT ENGINEER

No.	STATION	DESCRIPTION	OWNER
W01891	(S1) 592+904	Trail / Condition Unknown	N 6169069 E 539343 Crown
W01851	(S1) 592+763	Trib to Flatfish Lake / Non-classified drainage / RRZ=0 RMZ=0	N 6168991 E 539461 ILMB
W01850	(S1) 590+636	Trib to Brown Paint Creek / Non-classified drainage / RRZ=0 RMZ=0	N 6167350 E 540679 ILMB
W00990	(S1) 590+628	Forestry Road / LGGR / R02415 6	N 6167342 E 540679 Gitksan Forest Inc.
W01849	(S1) 590+547	Trib to Brown Paint Creek / Non-classified drainage / RRZ=0 RMZ=0	N 6167284 E 540694 ILMB
W02223	(S1) 590+416	Trib to Brown Paint Creek / S3 / RRZ=20 RMZ=20	N 6167172 E 540785 ILMB

Prince Rupert Gas Transmission Project
Gas Transmission Project

TransCanada
In business to deliver

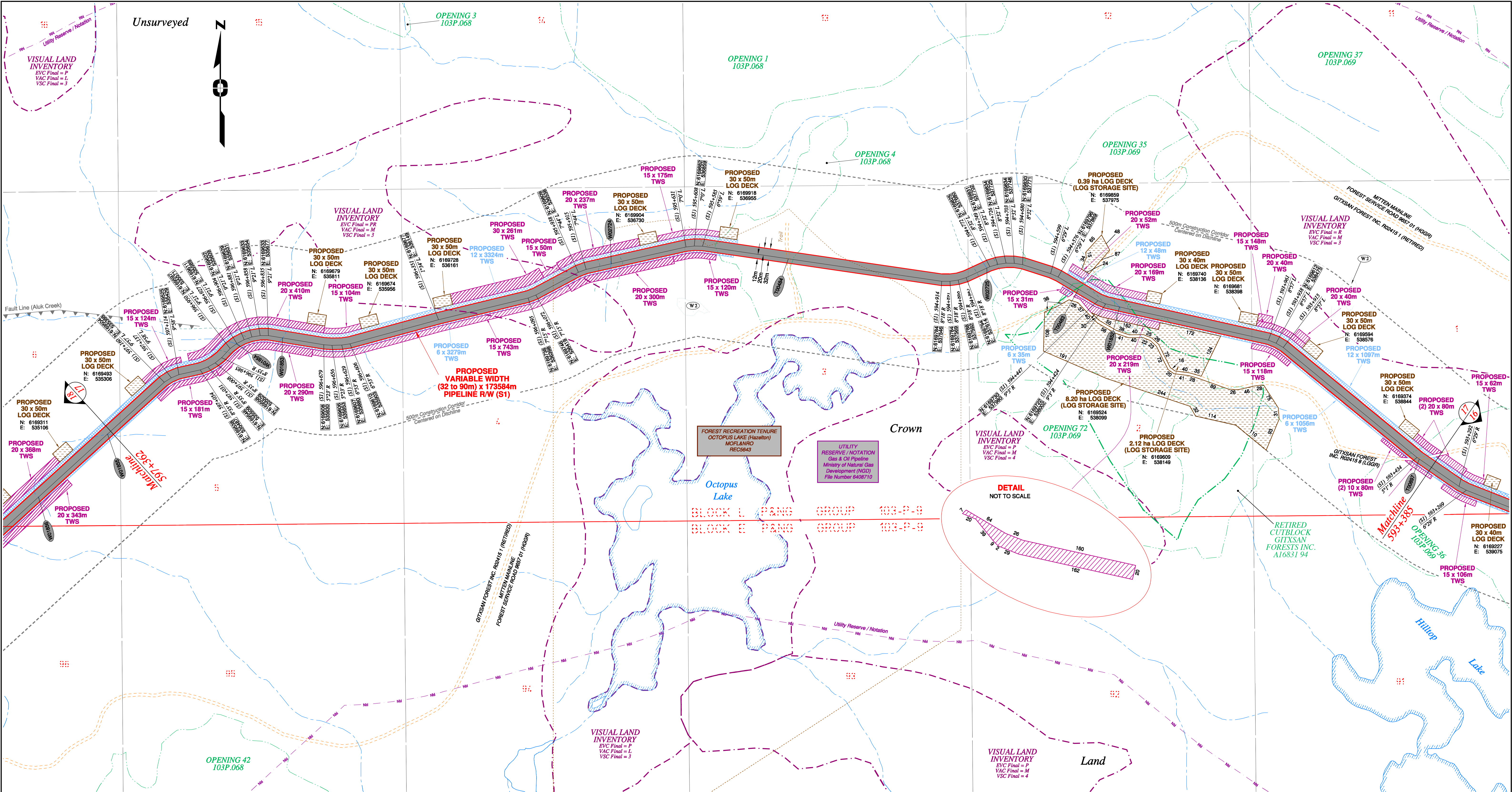
PRINCE RUPERT GAS TRANSMISSION LTD.
PROPOSED VARIABLE WIDTH (32 to 90m) PIPELINE R/W FROM d-59-I, 93-M-5 TO c-71-D, 103-P-3 (S1), c-71-D TO d-63-D, 103-P-3 (S2 & S3) & FROM d-63-D, 103-P-3 TO a-71-J, 103-I-13 (S4) (SHEET CHAINAGE: 589+401 TO 593+385)
Unsurveyed Crown Land/Crown Land/Private Land/Nisga'a Lands & Village Lands/Lava Bed Park
Cassiar District & Range 5 Coast District

The intended plot size of this plan is 864mm in width by 560mm in height when plotted at a scale of 1: 5000 (use D size sheet)

FOCUS
Focus Surveys (BC) Limited Partnership
10716 - 100th Avenue Fort St John BC
V1J 1Z3 250.787.0300 www.focus.ca

FOCUS:
AFE: 130275CP05R1
TCPL: 004776-09-ML-03-152
ePASS: 10048852

REV.
1

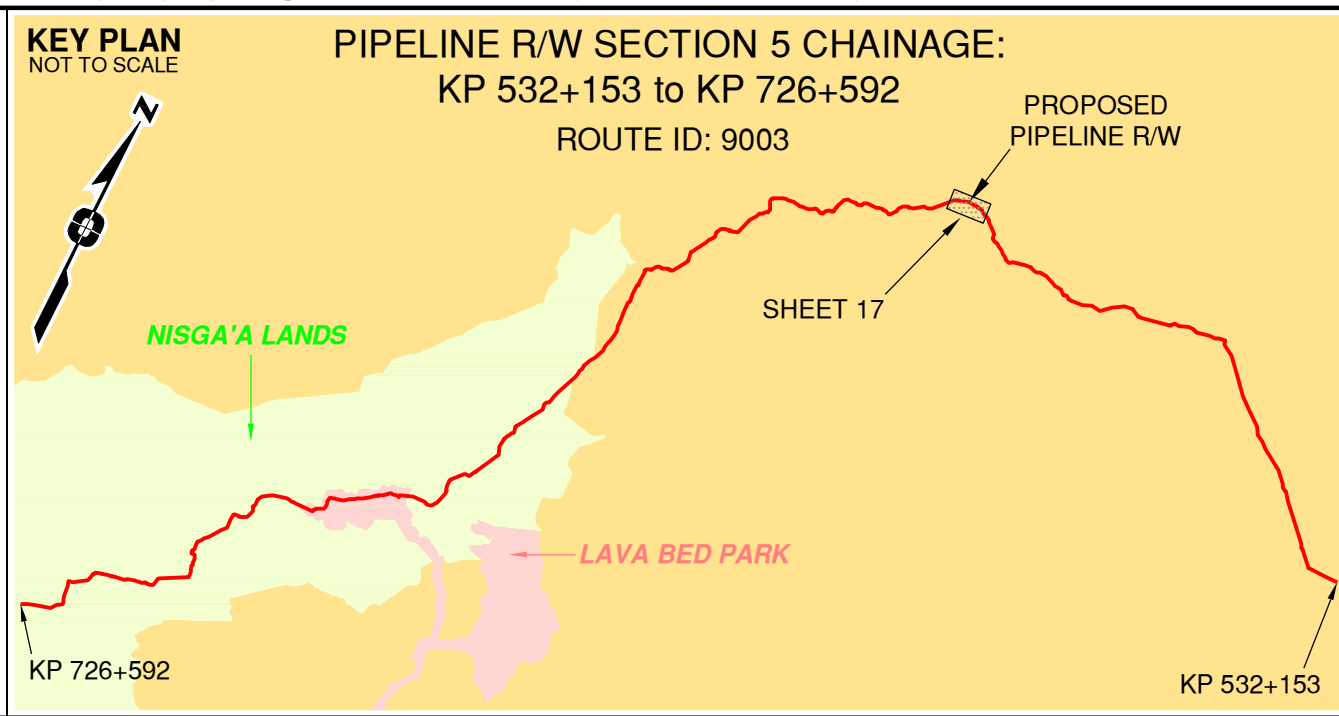


Rev	Revision Description	Date(Y/M/D)	By
0	Original Plan Prepared	2014/09/19	DC
1	Construction Plan Based on Rev.0 (2014/09/12) Except for New Construction Corridor: Shape, Label, Area Table & ePass Corrected Area on (S1)	2014/12/31	DC

NOTES:

- Co-ordinates are NAD 83 Grid, UTM Zone 9 and Zone 10. Distances shown are in metres and decimals thereof. Chainages are two-dimensional and are on pipeline ditchline. Pipeline segment length derived from ditchline chainages.
- Fault Lines data has been provided from BGC Engineering Inc. Desktop Study dated December 20, 2013.
- Water crossing information has been provided by Stantec. Wetlands data has been provided by Stantec dated August 29, 2014. Freshwater Atlas wetlands outside of construction corridor have been removed from scenery.
- Cutblock data is confirmed using information from the Government of BC websites for Forest MapView and MapBC.
- This pipeline section is partially within the Agricultural Land Reserve.
- Field Survey Completed July 15, 2014.
- This plan represents the best information available at the time of survey. Focus Surveys and its employees take no responsibility for the location of any underground conduits, pipes, or other facilities whether shown on or omitted from this plan. All underground installations should be located by the respective authorities prior to construction.

LEGEND
Proposed Pipeline R/W shown thus:
Proposed Temp. Workspaces shown thus:
Proposed Log Decks & Storage Sites shown thus:
Right of Way shown thus:
Roads shown thus:
Highway shown thus:
Railway line shown thus:
Seismic line/trail shown thus:
Recreation Tenure shown thus:
Drainages shown thus:
Buried cable shown thus:
Buried pipe shown thus:
Overhead powerline shown thus:
Riparian Reserve Zone shown thus:
Riparian Management Zone shown thus:
Forest Cover Reserve shown thus:
Archaeological site shown thus:
Agricultural Land Reserve shown thus:
Coal Tenure shown thus:
Cutblock body shown thus:
Fence body shown thus:
Fish/Wildlife Reserve body shown thus:
Grazing Tenure body shown thus:
Mineral Claim body shown thus:
Tree Farm Licence shown thus:
Quarry Reserve body shown thus:
Ungulate Winter Range body shown thus:
Visual Land Inventory shown thus:
Watershed Reserve body shown thus:
Wind Tenure body shown thus:
Woodlot body shown thus:
Fault Line shown thus:
Misc. Reserve/Notation body shown thus:
Misc. Licence/Permit body shown thus:
Old Growth Management Area shown thus:
Residences shown thus:
Nisga'a Lands shown thus:
Nisga'a Village Lands shown thus:
Lava Bed Park shown thus:



APPROVED BY
PROJECT ENGINEER

No.	STATION	DESCRIPTION	OWNER
W01854	(S1) 596+929	Trib to Octopus Lake / S5 / RRZ=0 RMZ=30	N 6169610 E 535588 ILMB
W01853	(S1) 596+796	Trib to Octopus Lake / Non-classified drainage / RRZ=0 RMZ=0	N 6169627 E 535716 ILMB
W02724	(S1) 595+845	Trib to Kispiox River / S4 / RRZ=0 RMZ=30	N 6169833 E 536629 ILMB
T00484	(S1) 595+345	Trail / Condition Unknown	N 6169846 E 537120 Crown
W02725	(S1) 594+783	Trib to Kispiox River / S4 / RRZ=0 RMZ=30	N 6169821 E 537672 Crown
T00483	(S1) 594+510	Forest Service Road (Mitten Mainline) / HGR / FSR 9657 01	N 6169762 E 537926 Dist. Manager Skeena Stikine
W01852	(S1) 594+385	Trib to Kispiox River / S6 / RRZ=0 RMZ=20	N 6169713 E 538040 ILMB
T00897	(S1) 593+427	Forestry Road / LGGR / R02415 8	N 6169291 E 538872 Gitksan Forest Inc.

Prince Rupert Gas Transmission Project

PRINCE RUPERT GAS TRANSMISSION LTD.

PROPOSED VARIABLE WIDTH (32 to 90m) PIPELINE R/W FROM d-59-I, 93-M-5 TO c-71-D, 103-P-3 (S1), c-71-D TO d-63-D, 103-P-3 (S2 & S3) & FROM d-63-D, 103-P-3 TO a-71-J, 103-I-13 (S4) (SHEET CHAINAGE: 593+385 TO 597+362)

Unsurveyed Crown Land/Crown Land/Private Land/Nisga'a Lands & Village Lands/Lava Bed Park

Cassiar District & Range 5 Coast District

The intended plot size of this plan is 884mm in width by 580mm in height when plotted at a scale of 1: 5000 (use D size sheet)

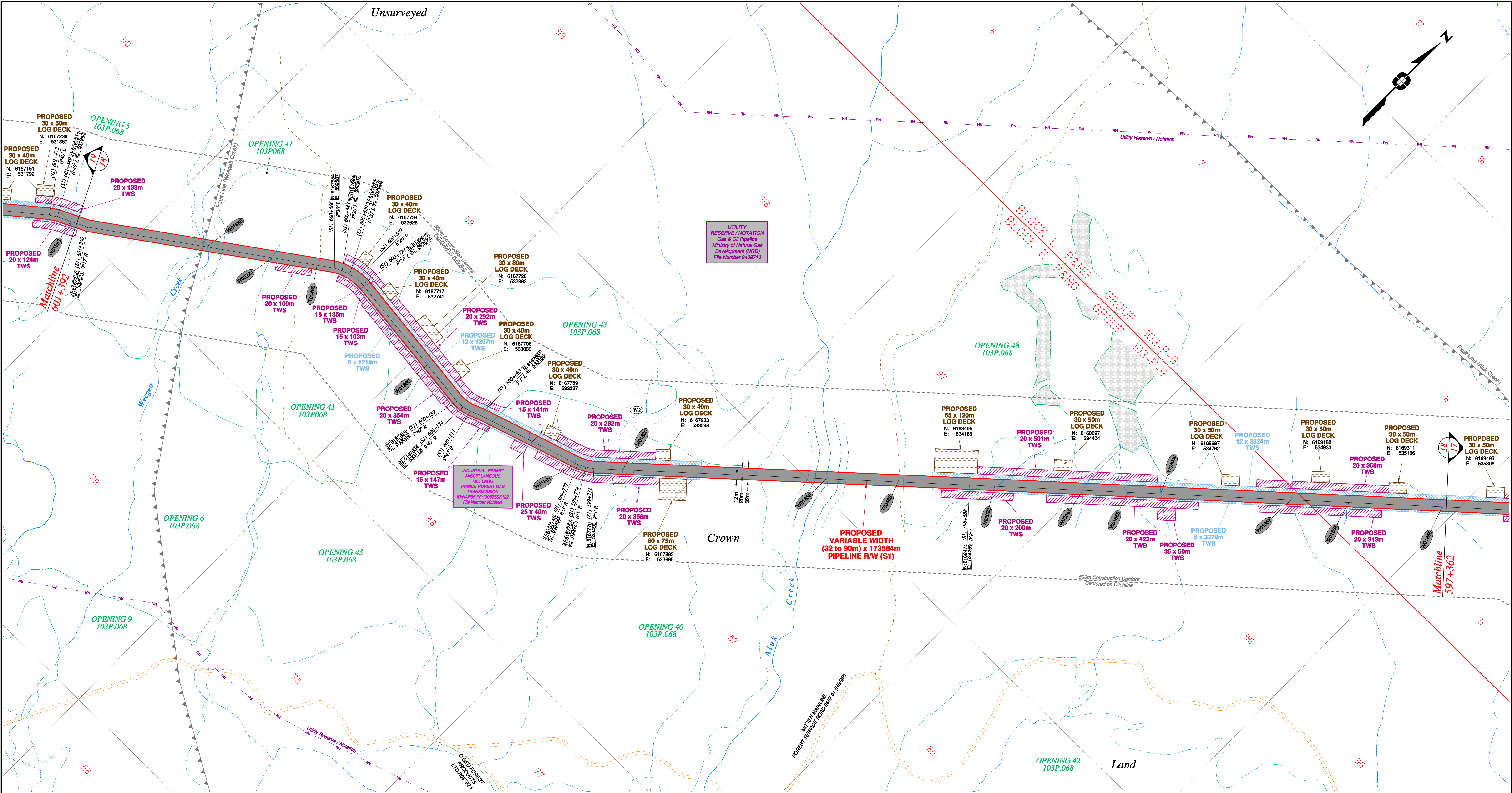
BCGS: 1031.092/93.93M.042/51/52/61, 103P.003/04/14/15/25/26/36/46/56/57/67/68/69/70

Sheet 17 of 49

FOCUS
Focus Surveys (BC) Limited Partnership
10716 - 160th Avenue Fort St. John BC
V1J 1Z3 250.787.0300 www.focus.ca

FOCUS:
AFE: 130275C05R1
TCPL: 004776-09-ML-03-153
ePASS: 10048852

REV. 1

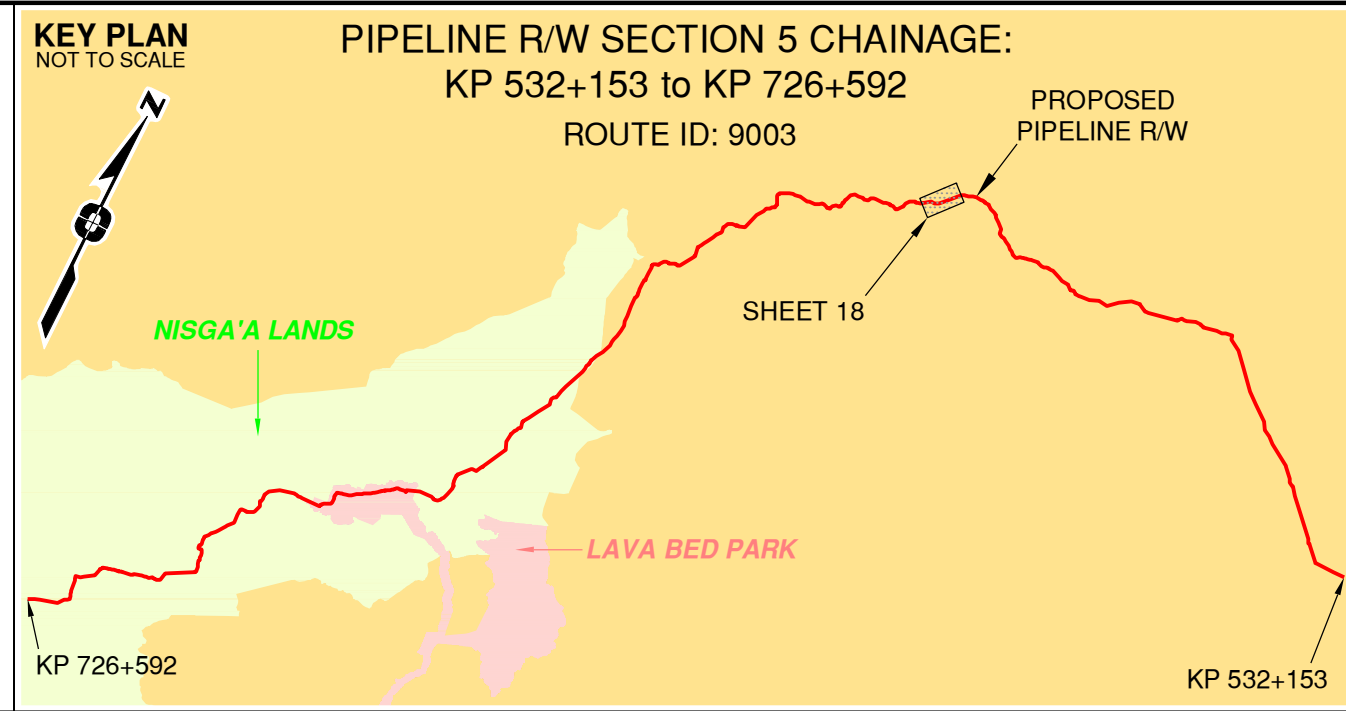


Rev	Revision Description	Date(Y/M/D)	By
0	Original Plan Prepared	2014/09/19	DC
1	Construction Plan Based on Rev.0 (2014/09/12) Except for New Construction Corridor: Shape, Label, Area Table & ePass Corrected Area on (S1)	2014/12/31	DC

NOTES:

- Co-ordinates are NAD 83 Grid, UTM Zone 9 and Zone 10. Distances shown are in metres and decimals thereof. Chainages are two-dimensional and are on pipeline ditchline. Pipeline segment length derived from ditchline chainages.
- Fault Lines data has been provided from BGC Engineering Inc. Desktop Study dated December 20, 2013.
- Water crossing information has been provided by Stantec. Wetlands data has been provided by Stantec dated August 29, 2014. Freshwater Atlas wetlands outside of construction corridor have been removed from scenery.
- Cutblock data is confirmed using information from the Government of BC websites for Forest MapView and MapBC.
- This pipeline section is partially within the Agricultural Land Reserve.
- Field Survey Completed July 15, 2014.
- This plan represents the best information available at the time of survey. Focus Surveys and its employees take no responsibility for the location of any underground conduits, pipes, or other facilities whether shown on or omitted from this plan. All underground installations should be located by the respective authorities prior to construction.

LEGEND
Proposed Pipeline R/W shown thus:
Proposed Temp. Workspaces shown thus: TWS / TWS
Proposed Log Decks & Storage Sites shown thus:
Right of Way shown thus:
Roads shown thus:
Highway shown thus:
Railway line shown thus:
Seismic line/trail shown thus:
Drainages shown thus:
Buried cable shown thus:
Buried pipe shown thus:
Overhead powerline shown thus:
Riparian Reserve Zone shown thus:
Forest Cover Reserve shown thus:
Archaeological site shown thus:
Agricultural Land Reserve body shown thus:
Coal Tenure body shown thus:
Cutblock body shown thus:
Fence body shown thus:
Fish/Wildlife Reserve body shown thus:
Grazing Tenure body shown thus:
Mineral Claim body shown thus:
Tree Farm Licence shown thus:
Quarry Reserve body shown thus:
Ungulate Winter Range body shown thus:
Visual Land Inventory shown thus:
Watershed Reserve body shown thus:
Wind Tenure body shown thus:
Woodlot body shown thus:
Fault line shown thus:
Misc. Reserve/Notation body shown thus:
Misc. Licence/Permit body shown thus:
Stantec Wetland / Classification shown thus:
Crossings shown thus:
Old Growth Management Area shown thus:
Residences shown thus:
Nisga'a Lands shown thus:
Nisga'a Village Lands shown thus:
Lava Bed Park shown thus:



APPROVED BY
PROJECT ENGINEER

No.	STATION	DESCRIPTION	OWNER
W01868	(S1) 601+026	Weegett Creek / S5 / RRZ=0 RMZ=30	N 6167445 E 532294 ILMB
W02224	(S1) 600+840	Trib to Aluk Creek / Non-classified drainage / RRZ=0 RMZ=0	N 6167552 E 532445 ILMB
T00486	(S1) 600+715	Trail / Condition Unknown	N 6167625 E 532547 Crown
W01862	(S1) 600+289	Trib to Aluk Creek / Non-classified drainage / RRZ=0 RMZ=0	N 6167647 E 532959 ILMB
W01861	(S1) 599+785	Trib to Aluk Creek / Non-classified drainage / RRZ=0 RMZ=0	N 6167744 E 533444 ILMB
W01860	(S1) 599+653	Trib to Aluk Creek / Beaver Dam Complex / RRZ=0 RMZ=30	N 6167823 E 533548 ILMB
W01859	(S1) 599+086	Aluk Creek / S2 / RRZ=30 RMZ=20	N 6168206 E 533966 ILMB
T00485	(S1) 598+886	Trail / Condition Unknown	N 6168341 E 534114 Crown
W02622	(S1) 598+618	Trib to Greasetrail Creek / S4 / RRZ=0 RMZ=30	N 6168522 E 534311 ILMB
W03045	(S1) 598+373	Trib to Aluk Creek / RRZ=0 RMZ=0	N 6168687 E 534492 ILMB
W01858	(S1) 598+248	Trib to Aluk Creek / Non-classified drainage / RRZ=0 RMZ=0	N 6168771 E 534584 ILMB
W03046	(S1) 598+157	Trib to Aluk Creek / RRZ=0 RMZ=0	N 6168833 E 534652 ILMB
W01857	(S1) 597+794	Trib to Aluk Creek / Non-classified drainage / RRZ=0 RMZ=0	N 6169077 E 534920 ILMB
W01856	(S1) 597+634	Trib to Aluk Creek / Non-classified drainage / RRZ=0 RMZ=0	N 6169185 E 535038 ILMB
W01855	(S1) 597+374	Trib to Aluk Creek / No visible channel / RRZ=0 RMZ=0	N 6169360 E 535230 ILMB

Prince Rupert Gas Transmission Project

TransCanada

In business to deliver

PRINCE RUPERT GAS TRANSMISSION LTD.

PROPOSED VARIABLE WIDTH (32 to 90m) PIPELINE R/W FROM d-59-I, 93-M-5 TO c-71-D, 103-P-3 (S1), c-71-D TO d-63-D, 103-P-3 (S2 & S3) & FROM d-63-D, 103-P-3 TO a-71-J, 103-I-13 (S4) (SHEET CHAINAGE: 597+362 TO 601+392)

Unsurveyed Crown Land/Crown Land/Private Land/Nisga'a Lands & Village Lands/Lava Bed Park Cassiar District & Range 6 Coast District

100 0 100 200 300 400

The intended plot size of this plan is 864mm in width by 560mm in height when plotted at a scale of 1: 5000 (use D size sheet)

BCGS:1031.092/93.93M.042/51/52/61.103P.003/04/14/15/25/26/36/46/56/57/67/68/69/70

FOCUS

Focus Surveys (BC) Limited Partnership
10715 - 100th Avenue Fort St John BC
V1J 1Z3 250.787.0300 www.focus.ca

FOCUS:

AFC:

TCPL:

ePASS:

130275CP05R1

5005948

004776-09-ML-03-154

10048852

REV. 1

12/31/2014 9:30:07 AM