


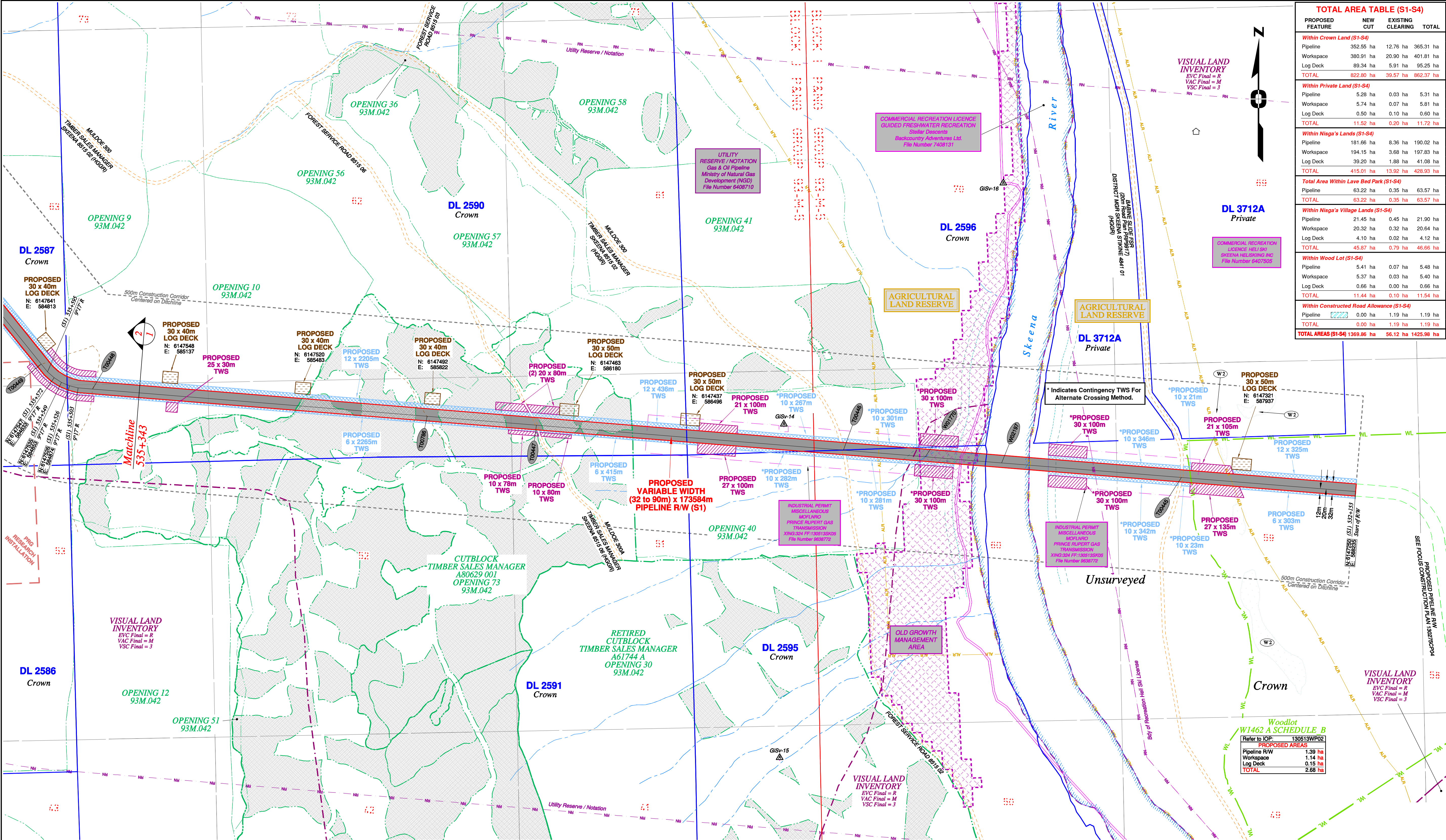


<p><b>Purple Rupert</b> Gas Transmission Project</p>	 <p><b>TransCanada</b> <i>In business to deliver</i></p>		
<h2 style="margin: 0;">PRINCE RUPERT GAS TRANSMISSION LTD.</h2>			
<p>SKETCH PLAN SHOWING TYPICAL CONSTRUCTION PLAN CROSSING SCENARIOS</p>			
 <p>The intended plot size of this plan is 864mm in width by 560mm in height when plotted at a scale of 1: 1000 (use D size sheet)</p>			
Sheet 1			
<b>Rev</b>	<b>Revision Description</b>	<b>Date(Y/M/D)</b>	<b>By</b>
0	Original Plan Prepared	2014/09/12	TR
		<b>A/E:</b>	<b>FOCUS:</b> 130275 TYPICALS
<p><b>FOCUS</b> FCS Land Services Limited Partnership 10716 - 100th Avenue Fort St John BC Y1J 1Z3 250.757.0300 www.focus.ca</p>		<b>REV.</b> <span style="font-size: 2em;">0</span>	





TOTAL AREA TABLE (S1-S4)			
PROPOSED FEATURE	NEW CUT	EXISTING CLEARING	TOTAL
<b>Within Crown Land (S1-S4)</b>			
Pipeline	352.55 ha	12.76 ha	365.31 ha
Workspace	380.91 ha	20.90 ha	401.81 ha
Log Deck	89.34 ha	5.91 ha	95.25 ha
<b>TOTAL</b>	<b>822.80 ha</b>	<b>39.57 ha</b>	<b>862.37 ha</b>
<b>Within Private Land (S1-S4)</b>			
Pipeline	5.28 ha	0.03 ha	5.31 ha
Workspace	5.74 ha	0.07 ha	5.81 ha
Log Deck	0.50 ha	0.10 ha	0.60 ha
<b>TOTAL</b>	<b>11.52 ha</b>	<b>0.20 ha</b>	<b>11.72 ha</b>
<b>Within Nisga'a Lands (S1-S4)</b>			
Pipeline	8.36 ha	0.00 ha	8.36 ha
Workspace	194.15 ha	3.68 ha	197.83 ha
Log Deck	39.20 ha	1.88 ha	41.08 ha
<b>TOTAL</b>	<b>415.01 ha</b>	<b>5.56 ha</b>	<b>420.57 ha</b>
<b>Total Area Within Lava Bed Park (S1-S4)</b>			
Pipeline	63.22 ha	0.35 ha	63.57 ha
<b>TOTAL</b>	<b>63.22 ha</b>	<b>0.35 ha</b>	<b>63.57 ha</b>
<b>Within Nisga'a Village Lands (S1-S4)</b>			
Pipeline	21.45 ha	0.45 ha	21.90 ha
Workspace	20.32 ha	0.32 ha	20.64 ha
Log Deck	4.10 ha	0.02 ha	4.12 ha
<b>TOTAL</b>	<b>45.87 ha</b>	<b>0.79 ha</b>	<b>46.66 ha</b>
<b>Within Wood Lot (S1-S4)</b>			
Pipeline	5.41 ha	0.07 ha	5.48 ha
Workspace	5.37 ha	0.03 ha	5.40 ha
Log Deck	0.66 ha	0.00 ha	0.66 ha
<b>TOTAL</b>	<b>11.44 ha</b>	<b>0.10 ha</b>	<b>11.54 ha</b>
<b>Within Constructed Road Allowance (S1-S4)</b>			
Pipeline	0.00 ha	1.19 ha	1.19 ha
<b>TOTAL</b>	<b>0.00 ha</b>	<b>1.19 ha</b>	<b>1.19 ha</b>
<b>TOTAL AREAS (S1-S4)</b>	<b>1369.86 ha</b>	<b>55.12 ha</b>	<b>1425.98 ha</b>

AREA TABLE (S1)			
PROPOSED FEATURE	NEW CUT	EXISTING CLEARING	TOTAL
<b>Within Crown Land (S1)</b>			
Pipeline	352.55 ha	12.00 ha	364.55 ha
Workspace	380.91 ha	20.90 ha	401.81 ha
Log Deck	89.34 ha	5.91 ha	95.25 ha
<b>TOTAL</b>	<b>822.80 ha</b>	<b>38.81 ha</b>	<b>861.61 ha</b>
<b>Within Private Land (S1)</b>			
Pipeline	5.28 ha	0.03 ha	5.31 ha
Workspace	5.74 ha	0.07 ha	5.81 ha
Log Deck	0.50 ha	0.10 ha	0.60 ha
<b>TOTAL</b>	<b>11.52 ha</b>	<b>0.20 ha</b>	<b>11.72 ha</b>
<b>Within Nisga'a Lands (S1)</b>			
Pipeline	8.36 ha	0.00 ha	8.36 ha
Workspace	138.37 ha	3.40 ha	141.77 ha
Log Deck	29.70 ha	1.78 ha	31.48 ha
<b>TOTAL</b>	<b>296.88 ha</b>	<b>5.18 ha</b>	<b>302.06 ha</b>
<b>Within Lava Bed Park (S1)</b>			
Pipeline	63.22 ha	0.35 ha	63.57 ha
<b>TOTAL</b>	<b>63.22 ha</b>	<b>0.35 ha</b>	<b>63.57 ha</b>
<b>Within Nisga'a Village Lands (S1)</b>			
Pipeline	5.29 ha	0.00 ha	5.29 ha
Workspace	3.93 ha	0.04 ha	3.97 ha
Log Deck	1.50 ha	0.00 ha	1.50 ha
<b>TOTAL</b>	<b>10.72 ha</b>	<b>0.04 ha</b>	<b>10.76 ha</b>
<b>Within Wood Lot (S1)</b>			
Pipeline	5.41 ha	0.07 ha	5.48 ha
Workspace	5.37 ha	0.03 ha	5.40 ha
Log Deck	0.66 ha	0.00 ha	0.66 ha
<b>TOTAL</b>	<b>11.44 ha</b>	<b>0.10 ha</b>	<b>11.54 ha</b>
<b>Within Constructed Road Allowance (S1)</b>			
Pipeline	0.00 ha	1.13 ha	1.13 ha
<b>TOTAL</b>	<b>0.00 ha</b>	<b>1.13 ha</b>	<b>1.13 ha</b>
<b>TOTAL AREAS (S1)</b>	<b>1216.58 ha</b>	<b>52.92 ha</b>	<b>1269.50 ha</b>

AREA TABLE (S2)			
PROPOSED FEATURE	NEW CUT	EXISTING CLEARING	TOTAL
<b>Within Crown Land (S2)</b>			
Pipeline	0.00 ha	0.28 ha	0.28 ha
<b>TOTAL</b>	<b>0.00 ha</b>	<b>0.28 ha</b>	<b>0.28 ha</b>
<b>Within Nisga'a Lands (S2)</b>			
Pipeline	3.71 ha	0.05 ha	3.76 ha
Workspace	4.48 ha	0.03 ha	4.51 ha
Log Deck	0.15 ha	0.00 ha	0.15 ha
<b>TOTAL</b>	<b>8.34 ha</b>	<b>0.08 ha</b>	<b>8.42 ha</b>
<b>TOTAL AREAS (S2)</b>	<b>8.34 ha</b>	<b>0.36 ha</b>	<b>8.70 ha</b>

AREA TABLE (S3)			
PROPOSED FEATURE	NEW CUT	EXISTING CLEARING	TOTAL
<b>Within Crown Land (S3)</b>			
Pipeline	0.00 ha	0.12 ha	0.12 ha
<b>TOTAL</b>	<b>0.00 ha</b>	<b>0.12 ha</b>	<b>0.12 ha</b>
<b>Within Nisga'a Lands (S3)</b>			
Pipeline	4.68 ha	0.07 ha	4.75 ha
Workspace	5.50 ha	0.16 ha	5.66 ha
Log Deck	0.57 ha	0.00 ha	0.57 ha
<b>TOTAL</b>	<b>10.75 ha</b>	<b>0.23 ha</b>	<b>10.98 ha</b>
<b>TOTAL AREAS (S3)</b>	<b>10.75 ha</b>	<b>0.35 ha</b>	<b>11.10 ha</b>

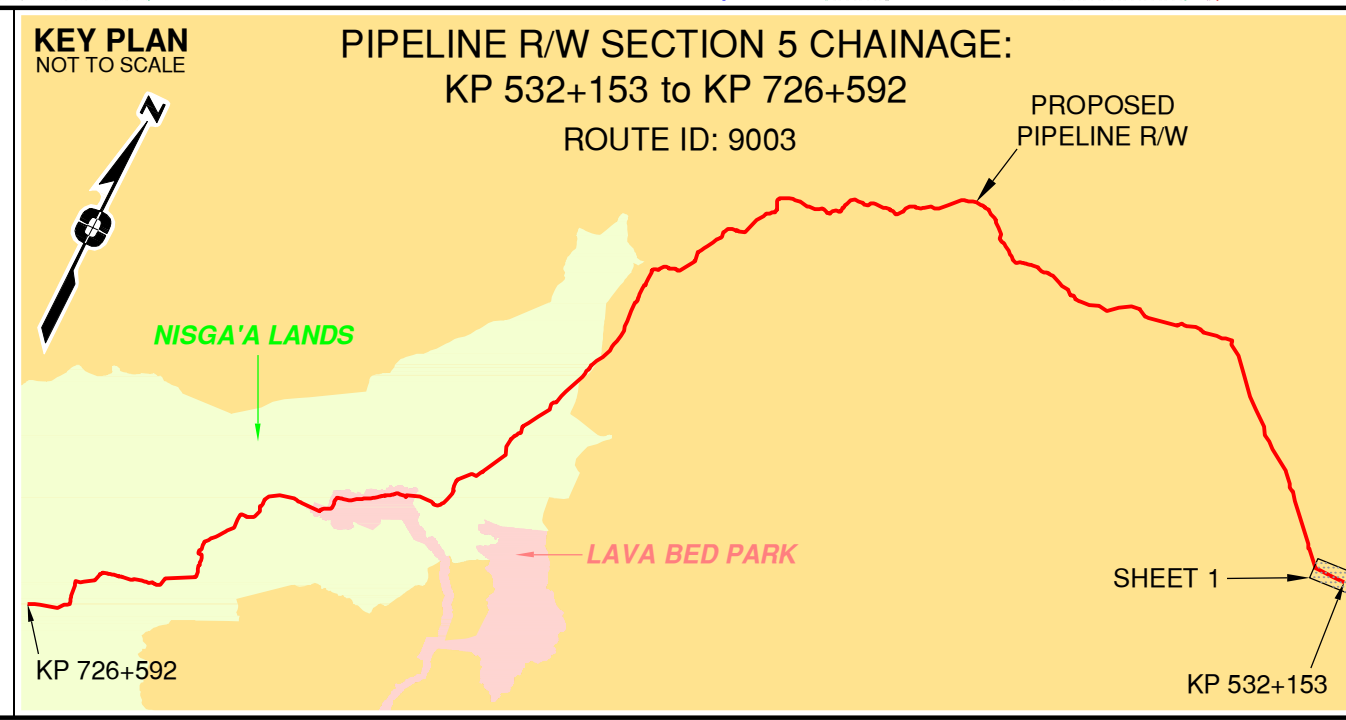
AREA TABLE (S4)			
PROPOSED FEATURE	NEW CUT	EXISTING CLEARING	TOTAL
<b>Within Crown Land (S4)</b>			
Pipeline	0.00 ha	0.36 ha	0.36 ha
<b>TOTAL</b>	<b>0.00 ha</b>	<b>0.36 ha</b>	<b>0.36 ha</b>
<b>Within Nisga'a Lands (S4)</b>			
Pipeline	44.46 ha	1.13 ha	45.59 ha
Workspace	45.80 ha	0.09 ha	45.89 ha
Log Deck	8.78 ha	0.10 ha	8.88 ha
<b>TOTAL</b>	<b>99.04 ha</b>	<b>1.32 ha</b>	<b>100.36 ha</b>
<b>Within Nisga'a Village Lands (S4)</b>			
Pipeline	16.16 ha	0.45 ha	16.61 ha
Workspace	16.39 ha	0.28 ha	16.67 ha
Log Deck	2.60 ha	0.02 ha	2.62 ha
<b>TOTAL</b>	<b>35.15 ha</b>	<b>0.75 ha</b>	<b>35.90 ha</b>
<b>Within Constructed Road Allowance (S4)</b>			
Pipeline	0.00 ha	0.06 ha	0.06 ha
<b>TOTAL</b>	<b>0.00 ha</b>	<b>0.06 ha</b>	<b>0.06 ha</b>
<b>TOTAL AREAS (S4)</b>	<b>134.19 ha</b>	<b>2.49 ha</b>	<b>136.68 ha</b>
<b>Total for Pipeline Section #5</b>			
500m Construction Corridor			
<b>TOTAL</b>	<b>9769.81 ha</b>		

Rev	Revision Description	Date(Y/M/D)	By
0	Original Plan Prepared	2014/09/19	DC
1	Construction Plan Based on Rev.0 (2014/09/12) Except for New Construction Corridor: Shape, Label, Area Table & ePass Corrected Area on (S1)	2014/12/31	DC

NOTES:

- Co-ordinates are NAD 83 Grid, UTM Zone 9 and Zone 10. Distances shown are in metres and decimals thereof. Chainages are two-dimensional and are on pipeline ditchline. Pipeline segment length derived from ditchline chainages.
- Fault Lines data has been provided from BGC Engineering Inc. Desktop Study dated December 20, 2013.
- Water crossing information has been provided by Stantec. Wetlands data has been provided by Stantec dated August 29, 2014. Freshwater Atlas wetlands outside of construction corridor have been removed from scenery.
- Cutblock data is confirmed using information from the Government of BC websites for Forest MapView and MapBC.
- This pipeline section is partially within the Agricultural Land Reserve.
- Field Survey Completed July 15, 2014
- This plan represents the best information available at the time of survey. Focus Surveys and its employees take no responsibility for the location of any underground conduits, pipes, or other facilities whether shown on or omitted from this plan. All underground installations should be located by the respective authorities prior to construction.

LEGEND	
Proposed Pipeline R/W shown thus:	Fish/Wildlife Reserve bdy shown thus:
Proposed Temp. Workspaces shown thus:	Grazing Tenure bdy shown thus:
Proposed Log Decks & Storage Sites shown thus:	Mineral Claim bdy shown thus:
Right of Way shown thus:	Tree Farm Licence shown thus:
Roads shown thus:	Quarry Reserve bdy shown thus:
Highway shown thus:	Ungulate Winter Range bdy shown thus:
Railway line shown thus:	Visual Land Inventory shown thus:
Seismic line/trail shown thus:	Watershed Reserve bdy shown thus:
Recreation Tenure shown thus:	Wind Tenure bdy shown thus:
Drainages shown thus:	Woodlot bdy shown thus:
Buried cable shown thus:	Fault Line shown thus:
Buried pipe shown thus:	Misc. Reserve/Notation bdy shown thus:
Overhead powerline shown thus:	Misc. Licence/Permit bdy shown thus:
Riparian Reserve Zone shown thus:	Stantec Wetland / Classification shown thus:
Riparian Management Zone shown thus:	Crossings shown thus:
Forest Cover Reserve shown thus:	Old Growth Management Area shown thus:
Archaeological site shown thus:	Residences shown thus:
Agricultural Land Reserve bdy shown thus:	Nisga'a Lands shown thus:
Coal Tenure bdy shown thus:	Nisga'a Village Lands shown thus:
Cutblock bdy shown thus:	Lava Bed Park shown thus:
Fence bdy shown thus:	



APPROVED BY
PROJECT ENGINEER

No.	STATION	DESCRIPTION	NAD 83 UTM ZONE 9	OWNER
T00786	(S1) 534+589	Trail / Condition Unknown	N 6147446 E 585808	Crown
T00447	(S1) 534+302	Forest Service Road (Muldoe) / HGR / FSR 8515 06	N 6147423 E 586094	Timber Sales Manager Skeena
T00446	(S1) 533+497	Forest Service Road (Muldoe) / HGR / FSR 8515 02	N 6147358 E 586896	Timber Sales Manager Skeena
W01770	(S1) 533+282	Trib to Skeena River / S1 / RRZ=50 RMZ=30	N 6147340 E 587111	ILMB
W02197	(S1) 533+082	Skeena River / S1 / RRZ=50 RMZ=20	N 6147324 E 587310	ILMB
T00445	(S1) 532+611	Forest Service Road (Babine Side) / HGR / FSR 4841 01	N 6147286 E 587780	Dist. Manager Skeena Stikine

Prince Rupert Gas Transmission Project

**PRINCE RUPERT GAS TRANSMISSION LTD.**

PROPOSED VARIABLE WIDTH (32 to 90m) PIPELINE R/W FROM d-59-I, 93-M-5 TO c-71-D, 103-P-3 (S1), c-71-D to d-63-D, 103-P-3 (S2 & S3) & FROM d-63-D, 103-P-3 TO a-71-J, 103-I-13 (S4) (SHEET CHAINAGE: 532+153 TO 535+343)

Unsurveyed Crown Land/Crown Land/Private Land/Nisga'a Lands & Village Lands/Lava Bed Park Cassiar District & Range 5 Coast District

The intended plot size of this plan is 84mm in width by 580mm in height when plotted at a scale of 1: 5000 (use D size sheet)

BCGS:1031.092/93.93M.042/51/52/61.103P.003/04/14/15/25/26/36/46/56/57/68/69/70

Sheet 1 of 49

**FOCUS** Focus Surveys (BC) Limited Partnership  
10716 - 100th Avenue, Fort St. John, BC  
V1J 1Z3 250.787.0300 www.focus.ca

**FOCUS** 130275C/P05R1  
AFCL: 5005948  
TCPL: 004776-09-ML-03-137  
ePASS: 10048852

REV. 1



Rev	Revision Description	Date(Y/M/D)	By	LEGEND
0	Original Plan Prepared	2014/09/19	DC	<p>Proposed Pipeline R/W shown thus: <span style="border: 1px solid red; display: inline-block; width: 20px; height: 10px;"></span></p> <p>Proposed Temp. Workshops shown thus: <span style="border: 1px solid red; border-radius: 50%; padding: 2px;">TWS / TWS</span></p> <p>Proposed Log Decks &amp; Storage Sites shown thus: <span style="border: 1px solid red; border-radius: 50%; padding: 2px;">LDS</span></p> <p>Right of Way shown thus: <span style="border-bottom: 2px dashed green; display: inline-block; width: 20px;"></span></p> <p>Roads shown thus: <span style="border-bottom: 2px dashed orange; display: inline-block; width: 20px;"></span></p> <p>Highway shown thus: <span style="border-bottom: 2px dashed blue; display: inline-block; width: 20px;"></span></p> <p>Railway line shown thus: <span style="border-bottom: 2px dashed purple; display: inline-block; width: 20px;"></span></p> <p>Seismic line/trail shown thus: <span style="border-bottom: 2px dashed brown; display: inline-block; width: 20px;"></span></p> <p>Recreation Tenure shown thus: <span style="border-bottom: 2px dashed pink; display: inline-block; width: 20px;"></span></p> <p>Drainages shown thus: <span style="border-bottom: 2px dashed lightblue; display: inline-block; width: 20px;"></span></p> <p>Buried cable shown thus: <span style="border-bottom: 2px dashed yellow; display: inline-block; width: 20px;"></span></p> <p>Buried pipe shown thus: <span style="border-bottom: 2px dashed lightgreen; display: inline-block; width: 20px;"></span></p> <p>Overhead powerline shown thus: <span style="border-bottom: 2px dashed magenta; display: inline-block; width: 20px;"></span></p> <p>Stantec Reserve Zone shown thus: <span style="border: 1px solid black; border-radius: 50%; padding: 2px;">SRZ</span></p> <p>Riparian Management Zone shown thus: <span style="border: 1px solid black; border-radius: 50%; padding: 2px;">RMZ</span></p> <p>Forest Cover Reserve shown thus: <span style="border: 1px solid black; border-radius: 50%; padding: 2px;">FCR</span></p> <p>Archaeological site shown thus: <span style="border: 1px solid black; border-radius: 50%; padding: 2px;">AS</span></p> <p>Agricultural Land Reserve bdy shown thus: <span style="border: 1px solid black; border-radius: 50%; padding: 2px;">ALR</span></p> <p>Goal Tenure bdy shown thus: <span style="border: 1px solid black; border-radius: 50%; padding: 2px;">CL</span></p> <p>Outback bdy shown thus: <span style="border: 1px solid black; border-radius: 50%; padding: 2px;">OB</span></p> <p>Fence bdy shown thus: <span style="border-bottom: 2px dashed black; display: inline-block; width: 20px;"></span></p>
1	Construction Plan Based on Rev.0 (2014/09/12) Except for New Construction Corridor: Shape, Label, Area Table & ePass Corrected Area on (S1)	2014/12/31	DC	<p>Fish/Wildlife Reserve bdy shown thus: <span style="border-bottom: 2px dashed blue; display: inline-block; width: 20px;"></span> FW</p> <p>Grazing Tenure bdy shown thus: <span style="border-bottom: 2px dashed green; display: inline-block; width: 20px;"></span> GT</p> <p>Mineral Claim bdy shown thus: <span style="border-bottom: 2px dashed orange; display: inline-block; width: 20px;"></span> MC</p> <p>Tree Farm Licence shown thus: <span style="border-bottom: 2px dashed purple; display: inline-block; width: 20px;"></span> TFL</p> <p>Quarry Reserve bdy shown thus: <span style="border-bottom: 2px dashed brown; display: inline-block; width: 20px;"></span> QR</p> <p>Ungulate Winter Range bdy shown thus: <span style="border-bottom: 2px dashed pink; display: inline-block; width: 20px;"></span> UWR</p> <p>Visual Land Inventory shown thus: <span style="border-bottom: 2px dashed lightblue; display: inline-block; width: 20px;"></span> VLI</p> <p>Watershed Reserve bdy shown thus: <span style="border-bottom: 2px dashed yellow; display: inline-block; width: 20px;"></span> WR</p> <p>Wind Tenure bdy shown thus: <span style="border-bottom: 2px dashed lightgreen; display: inline-block; width: 20px;"></span> WT</p> <p>Woodlot bdy shown thus: <span style="border-bottom: 2px dashed magenta; display: inline-block; width: 20px;"></span> WL</p> <p>Fault Line shown thus: <span style="border-bottom: 2px dashed black; display: inline-block; width: 20px;"></span> FL</p> <p>Misc Reserve/Notation bdy shown thus: <span style="border-bottom: 2px dashed grey; display: inline-block; width: 20px;"></span> MR</p> <p>Misc Licence/Permit bdy shown thus: <span style="border-bottom: 2px dashed red; display: inline-block; width: 20px;"></span> ML</p> <p>Stantec Wildlife / Classification shown thus: <span style="border: 1px solid black; border-radius: 50%; padding: 2px;">SWC</span></p> <p>Crossings shown thus: <span style="border: 1px solid black; border-radius: 50%; padding: 2px;">C</span></p> <p>Old Growth Management Area shown thus: <span style="border: 1px solid black; border-radius: 50%; padding: 2px;">OGMA</span></p> <p>Residences shown thus: <span style="border: 1px solid black; border-radius: 50%; padding: 2px;">R</span></p> <p>Nisga'a Lands shown thus: <span style="border: 1px solid black; border-radius: 50%; padding: 2px;">NL</span></p> <p>Nisga'a Village Lands shown thus: <span style="border: 1px solid black; border-radius: 50%; padding: 2px;">NVL</span></p> <p>Lava Bed Park shown thus: <span style="border: 1px solid black; border-radius: 50%; padding: 2px;">LBP</span></p>

**NOTES:**

Co-ordinates are NAD 83 Grid, UTM Zone 9 and Zone 10. Distances shown are in metres and decimals thereof. Chainages are two-dimensional and are on pipeline declivity. Pipeline segment length derived from declivity chainages.

Fault Lines data has been provided from BGC Engineering Inc. Desktop Study dated December 20, 2013.

Water crossing information has been provided by Stantec, Wetlands data has been provided by Stantec dated August 20, 2014. Freshwater Miss wetlands outside of construction corridor have been removed from scenery.

Cutback data is confirmed using information from the Government of BC websites for Forest MapView and MapBC.

This pipeline section is partially within the Agricultural Land Reserve.

Field Survey Completed July 15, 2014

This plan represents the best information available at the time of survey. Focus Surveys and its employees take no responsibility for the location of any underground conduits, pipes, or other facilities whether shown on or omitted from this plan. All underground installations should be located by the respective authorities prior to construction.

**KEY PLAN**  
NOT TO SCALE

**PIPELINE R/W SECTION 5 CHAINAGE:**  
KP 532+153 to KP 726+592  
ROUTE ID: 9003

**PROPOSED PIPELINE R/W**

APPROVED BY \_\_\_\_\_

PROJECT ENGINEER \_\_\_\_\_

**SHEET 2 OF 2**

No.	STATION	DESCRIPTION	NAD 83 UTM ZONE 9	OWNER
T00452	(S1) 537+694	Forest Service Road (Muldoe) / HGFR / FSR 8515 01	N 6149146 E 583461	Timber Sales Manager Skeena
T00451	(S1) 537+241	Trail / Condition Unknown	N 6148842 E 583781	Crown
T00450	(S1) 536+556	Forest Service Road (Muldoe 300) / HGFR / FSR 8515 02	N 6148309 E 584212	Timber Sales Manager Skeena
T00449	(S1) 535+622	Trail / Condition Unknown	N 6147553 E 584800	Crown
T00448	(S1) 535+466	Trail / Condition Unknown	N 6147517 E 584934	Crown

**TABLE OF CROSSINGS**

No.	STATION	DESCRIPTION	NAD 83 UTM ZONE 9	OWNER
T00452	(S1) 537+694	Forest Service Road (Muldoe) / HGFR / FSR 8515 01	N 6149146 E 583461	Timber Sales Manager Skeena
T00451	(S1) 537+241	Trail / Condition Unknown	N 6148842 E 583781	Crown
T00450	(S1) 536+556	Forest Service Road (Muldoe 300) / HGFR / FSR 8515 02	N 6148309 E 584212	Timber Sales Manager Skeena
T00449	(S1) 535+622	Trail / Condition Unknown	N 6147553 E 584800	Crown
T00448	(S1) 535+466	Trail / Condition Unknown	N 6147517 E 584934	Crown

**NOTES:**

Co-ordinates are NAD 83 Grid, UTM Zone 9 and Zone 10. Distances shown are in metres and decimals thereof. Chainages are two-dimensional and are on pipeline declivity. Pipeline segment length derived from declivity chainages.

Fault Lines data has been provided from BGC Engineering Inc. Desktop Study dated December 20, 2013.

Water crossing information has been provided by Stantec, Wetlands data has been provided by Stantec dated August 20, 2014. Freshwater Miss wetlands outside of construction corridor have been removed from scenery.

Cutback data is confirmed using information from the Government of BC websites for Forest MapView and MapBC.

This pipeline section is partially within the Agricultural Land Reserve.

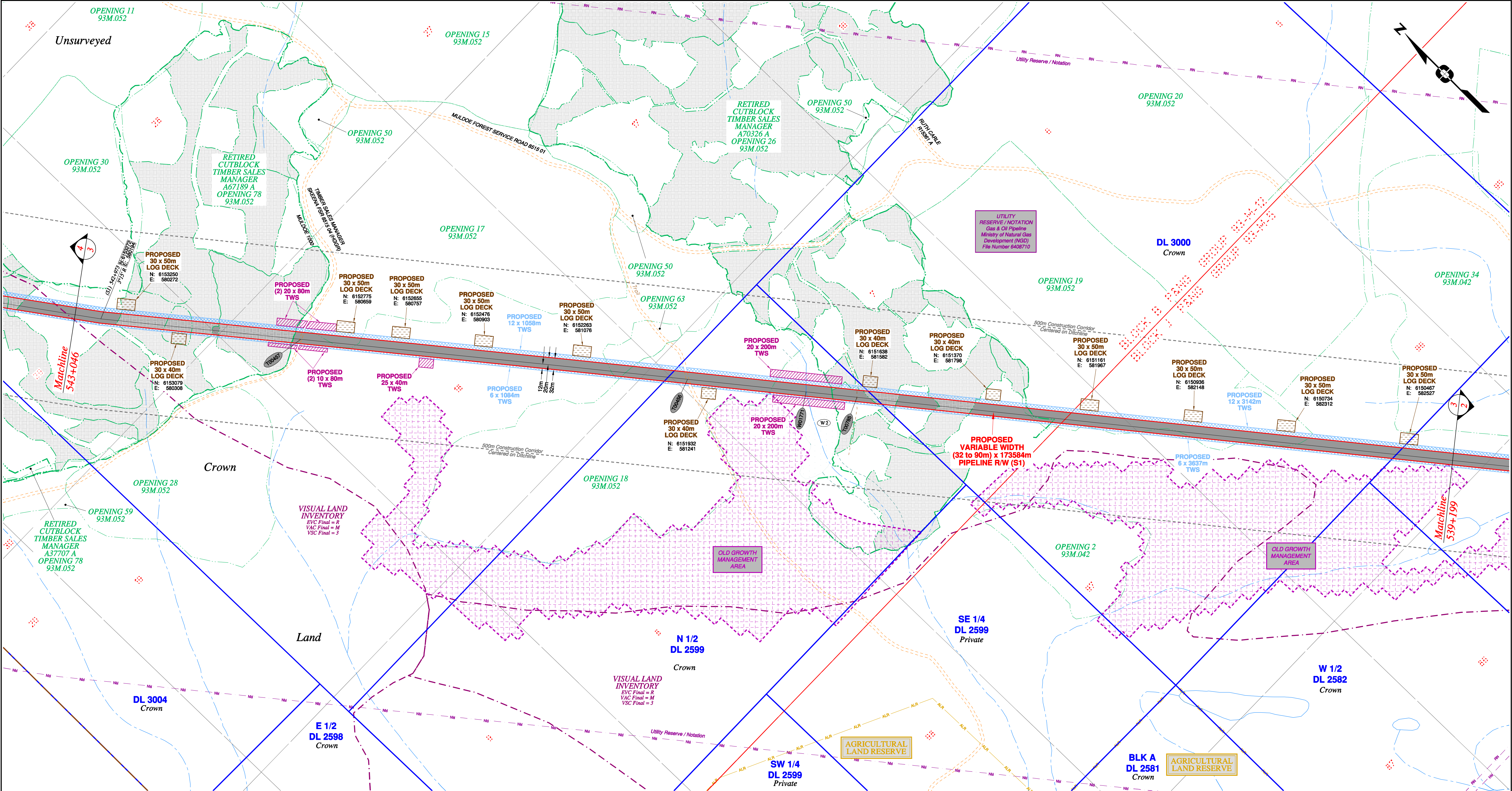
Field Survey Completed July 15, 2014

This plan represents the best information available at the time of survey. Focus Surveys and its employees take no responsibility for the location of any underground conduits, pipes, or other facilities whether shown on or omitted from this plan. All underground installations should be located by the respective authorities prior to construction.

**KEY PLAN**  
NOT TO SCALE

**PIPELINE R/W SECTION 5 CHAINAGE:**  
KP 532+153 to KP 726+592  
ROUTE



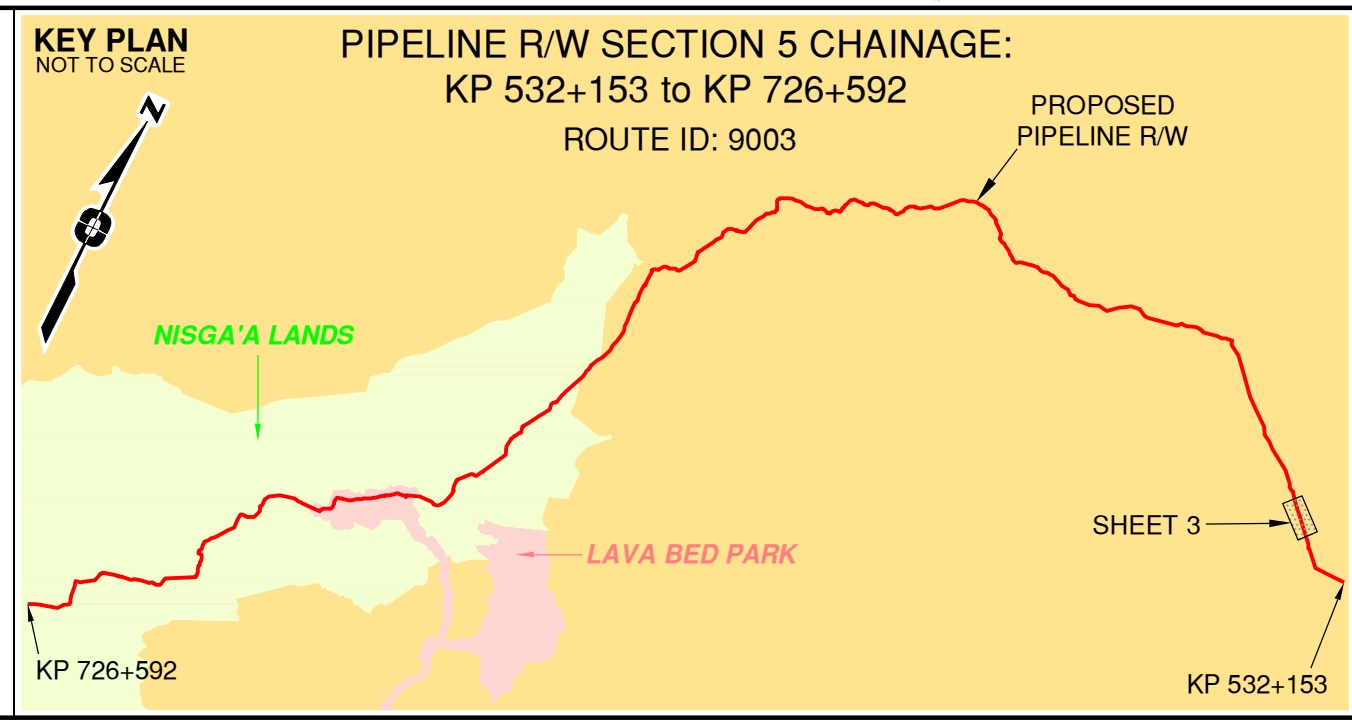


Rev	Revision Description	Date(Y/M/D)	By
0	Original Plan Prepared	2014/09/19	DC
1	Construction Plan Based on Rev.0 (2014/09/12) Except for New Construction Corridor: Shape, Label, Area Table & ePass Corrected Area on (S1)	2014/12/31	DC

NOTES:

- Co-ordinates are NAD 83 Grid, UTM Zone 9 and Zone 10. Distances shown are in metres and decimals thereof. Chainages are two-dimensional and are on pipeline ditchline. Pipeline segment length derived from ditchline chainages.
- Fault Lines data has been provided from BGC Engineering Inc. Desktop Study dated December 20, 2013.
- Water crossing information has been provided by Stantec. Wetlands data has been provided by Stantec dated August 29, 2014. Freshwater Atlas wetlands outside of construction corridor have been removed from scenery.
- Cutblock data is confirmed using information from the Government of BC websites for Forest MapView and MapBC.
- This pipeline section is partially within the Agricultural Land Reserve.
- Field Survey Completed July 15, 2014
- This plan represents the best information available at the time of survey. Focus Surveys and its employees take no responsibility for the location of any underground conduits, pipes, or other facilities whether shown on or omitted from this plan. All underground installations should be located by the respective authorities prior to construction.

LEGEND
Proposed Pipeline R/W shown thus:
Proposed Temp. Workspaces shown thus:
Proposed Log Decks & Storage Sites shown thus:
Right of Way shown thus:
Roads shown thus:
Highway shown thus:
Railway line shown thus:
Seismic line/trail shown thus:
Recreation Tenure shown thus:
Drainages shown thus:
Buried cable shown thus:
Buried pipe shown thus:
Overhead powerline shown thus:
Forest Cover Reserve shown thus:
Archaeological site shown thus:
Agricultural Land Reserve shown thus:
Coal Tenure body shown thus:
Cutblock body shown thus:
Fence body shown thus:
Fish/Wildlife Reserve body shown thus:
Grazing Tenure body shown thus:
Mineral Claim body shown thus:
Tree Farm Licence shown thus:
Quarry Reserve body shown thus:
Ungulate Winter Range body shown thus:
Visual Land Inventory shown thus:
Watershed Reserve body shown thus:
Wind Tenure body shown thus:
Woodlot body shown thus:
Fault Line shown thus:
Misc. Reserve/Notation body shown thus:
Misc. Licence/Permit body shown thus:
Forest Reserve Zone shown thus:
Crossings shown thus:
Forest Cover Reserve shown thus:
Residences shown thus:
Nisga'a Lands shown thus:
Nisga'a Village Lands shown thus:
Lava Bed Park shown thus:



APPROVED BY
PROJECT ENGINEER

No.	STATION	DESCRIPTION	NAD 83 UTM ZONE 9	OWNER
T00457	(S1) 542+416	Forest Service Road (Muldoe 1000) / HGGR / FSR 8515 04	N 6152839 E 580547	Timber Sales Manager Skeena
T00456	(S1) 541+336	Trail / Condition Unknown	N 6152001 E 581228	Crown
W01771	(S1) 541+005	Trlb to Kispiox River / RRZ=0 RMZ=30	N 6151744 E 581436	ILMB
T00785	(S1) 540+863	Trail / Condition Unknown	N 6151633 E 581525	Crown

TABLE OF CROSSINGS

Prince Rupert Gas Transmission Project

**TransCanada**  
In business to deliver

**PRINCE RUPERT GAS TRANSMISSION LTD.**

PROPOSED VARIABLE WIDTH (32 to 90m) PIPELINE R/W FROM d-59-I, 93-M-5 TO c-71-D, 103-P-3 (S1), c-71-D TO d-63-D, 103-P-3 (S2 & S3) & FROM d-63-D, 103-P-3 TO a-71-J, 103-I-13 (S4) (SHEET CHAINAGE: 539+199 TO 543+046)

Unsurveyed Crown Land/Crown Land/Private Land/Nisga'a Lands & Village Lands/Lava Bed Park Cassiar District & Range 5 Coast District

The intended plot size of this plan is 864mm in width by 560mm in height when plotted at a scale of 1: 5000 (use D size sheet)

BCGS:1031.092/93.93M.042/51/52/61.103P.003/04/14/15/25/26/36/46/56/57/67/68/69/70

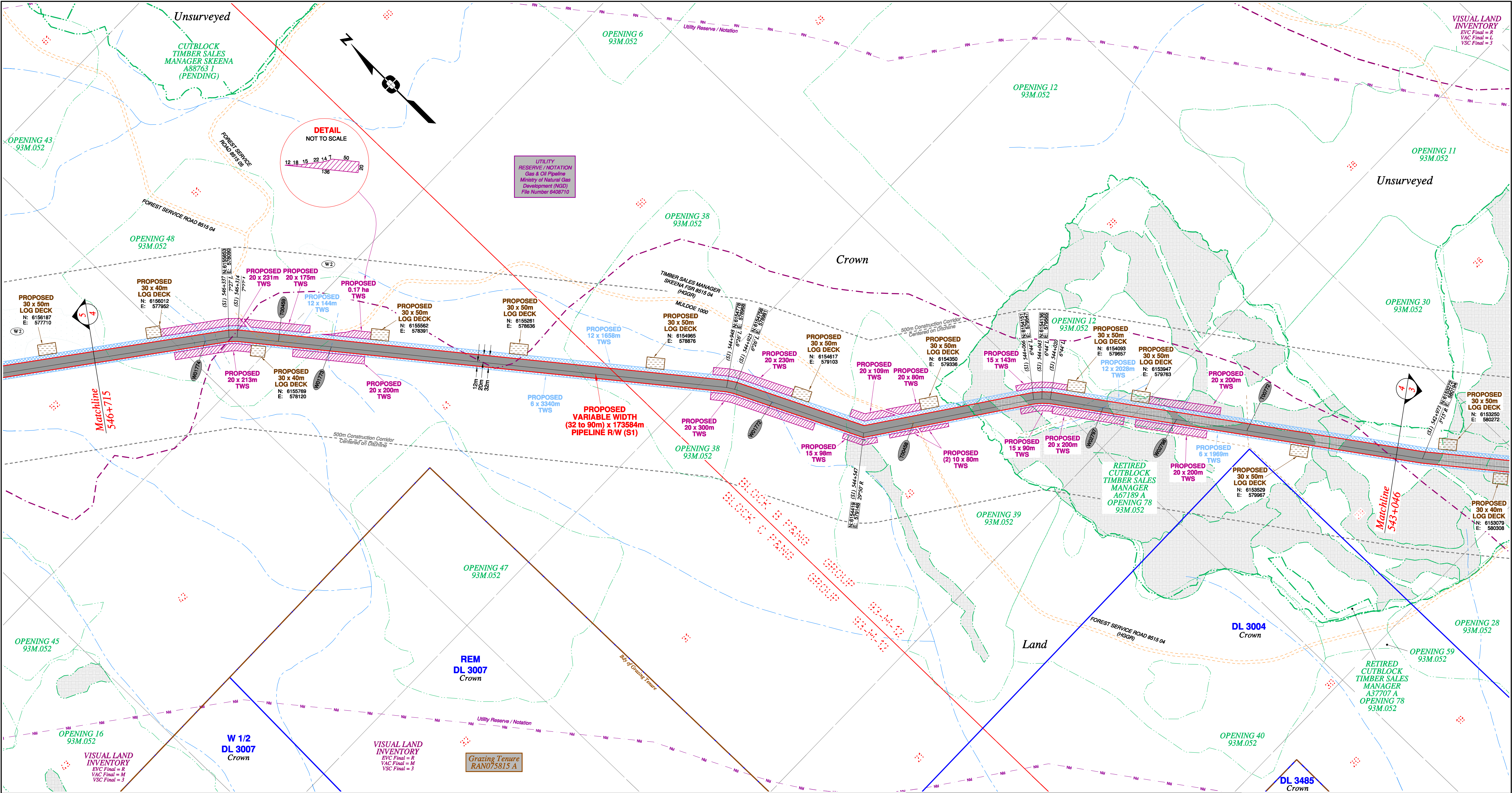
**FOCUS**  
Focus Surveys (BC) Limited Partnership  
10715 - 100th Avenue Fort St John BC V1J 1Z3 250.787.0300 www.focus.ca

FOCUS: 130275CP05R1  
AFE: 5005948  
TCPL: 004776-09-ML-03-139  
ePASS: 10048852

Sheet 3 of 49

REV. 1



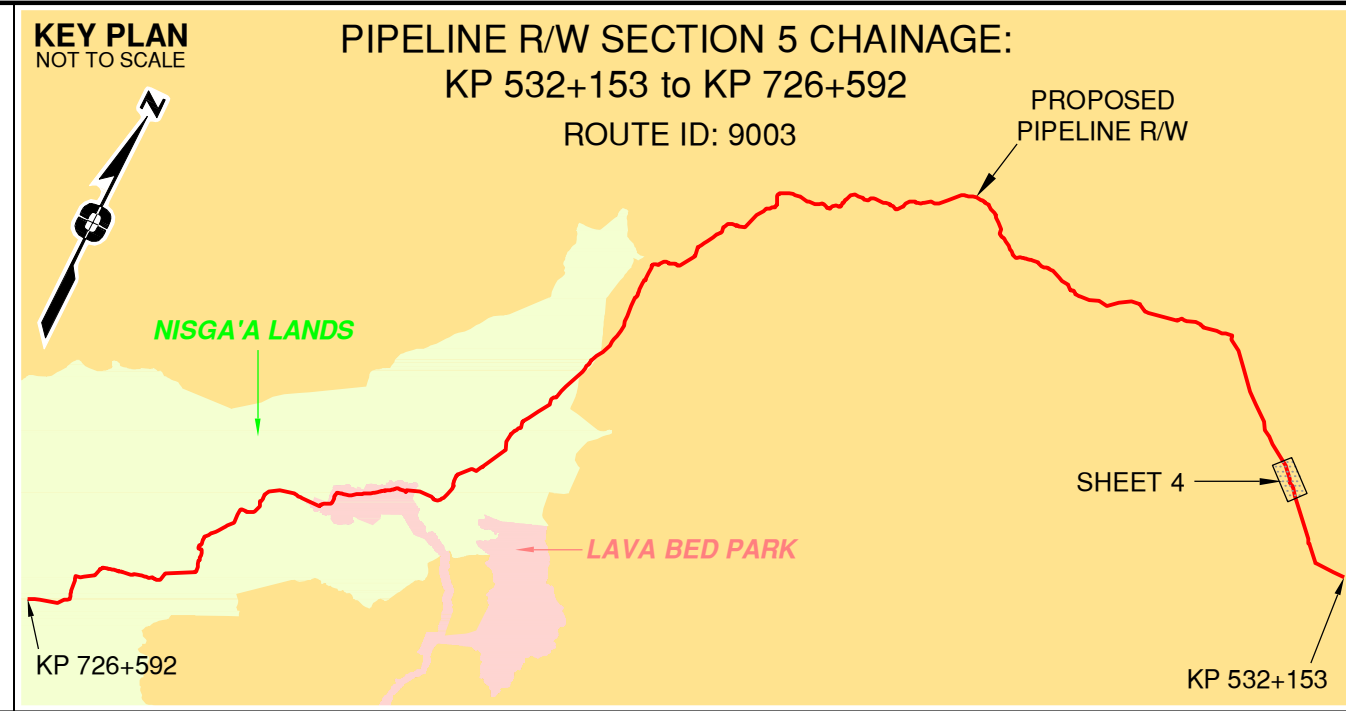


Rev	Revision Description	Date(Y/M/D)	By
0	Original Plan Prepared	2014/09/19	DC
1	Construction Plan Based on Rev.0 (2014/09/12) Except for New Construction Corridor: Shape, Label, Area Table & ePass Corrected Area on (S1)	2014/12/31	DC

NOTES:

- Co-ordinates are NAD 83 Grid, UTM Zone 9 and Zone 10. Distances shown are in metres and decimals thereof. Chainages are two-dimensional and are on pipeline ditchline. Pipeline segment length derived from ditchline chainages.
- Fault Lines data has been provided from BGC Engineering Inc. Desktop Study dated December 20, 2013.
- Water crossing information has been provided by Stantec. Wetlands data has been provided by Stantec dated August 29, 2014. Freshwater Atlas wetlands outside of construction corridor have been removed from scenery.
- Cutblock data is confirmed using information from the Government of BC websites for Forest MapView and MapBC.
- This pipeline section is partially within the Agricultural Land Reserve.
- Field Survey Completed July 15, 2014
- This plan represents the best information available at the time of survey. Focus Surveys and its employees take no responsibility for the location of any underground conduits, pipes, or other facilities whether shown on or omitted from this plan. All underground installations should be located by the respective authorities prior to construction.

LEGEND
Proposed Pipeline R/W shown thus:
Proposed Temp. Workspaces shown thus: TWS / TWS
Proposed Log Decks & Storage Sites shown thus:
Right of Way shown thus:
Roads shown thus:
Highway shown thus:
Railway line shown thus:
Seismic line/trail shown thus:
Drainages shown thus:
Buried cable shown thus:
Buried pipe shown thus:
Overhead powerline shown thus:
Riparian Reserve Zone shown thus:
Riparian Management Zone shown thus:
Forest Cover Reserve shown thus:
Archaeological site shown thus:
Agricultural Land Reserve body shown thus:
Coal Tenure body shown thus:
Cutblock body shown thus:
Fence body shown thus:
Fish/Wildlife Reserve body shown thus:
Grazing Tenure body shown thus:
Mineral Claim body shown thus:
Tree Farm Licence shown thus:
Quarry Reserve body shown thus:
Ungulate Winter Range body shown thus:
Visual Land Inventory shown thus:
Watershed Reserve body shown thus:
Woodlot body shown thus:
Fault Line shown thus:
Misc. Reserve/Notation body shown thus:
Misc. Licence/Permit body shown thus:
Stantec Wetland / Classification shown thus:
Crossings shown thus:
Old Growth Management Area shown thus:
Residences shown thus:
Nisga'a Lands shown thus:
Nisga'a Village Lands shown thus:
Lava Bed Park shown thus:



APPROVED BY
PROJECT ENGINEER

No.	STATION	DESCRIPTION	OWNER
W01774	(S1) 546+404	Trib to Kispiox River / S4 / RRZ=0 RMZ=30	N 6155893 E 578035 ILMB
T00459	(S1) 546+199	Forest Service Road (Muldoe 1000) / HGGR / FSR 8515 04	N 6155748 E 578179 Timber Sales Manager Skeena
W01773	(S1) 546+051	Trib to Kispiox River / Non-classified drainage / RRZ=0 RMZ=0	N 6155633 E 578272 ILMB
W01772	(S1) 544+816	Trib to Kispiox River / Non-classified drainage / RRZ=0 RMZ=0	N 6154660 E 579029 ILMB
T00458	(S1) 544+407	Forest Service Road (Muldoe 1000) / HGGR / FSR 8515 04	N 6154341 E 579264 Timber Sales Manager Skeena
W02797	(S1) 543+872	Trib to Kispiox River / S4 / RRZ=0 RMZ=30	N 6153999 E 579667 ILMB
W02798	(S1) 543+665	Trib to Kispiox River / S4 / RRZ=0 RMZ=30	N 6153831 E 579789 ILMB
T00772	(S1) 543+467	Trail / Condition Unknown	N 6153671 E 579905 Crown

Prince Rupert Gas Transmission Project

**PRINCE RUPERT GAS TRANSMISSION LTD.**

PROPOSED VARIABLE WIDTH (32 to 90m) PIPELINE R/W FROM d-59-I, 93-M-5 TO c-71-D, 103-P-3 (S1), c-71-D TO d-63-D, 103-P-3 (S2 & S3) & FROM d-63-D, 103-P-3 TO a-71-J, 103-I-13 (S4) (SHEET CHAINAGE: 543+046 TO 546+715)

Unsurveyed Crown Land/Crown Land/Private Land/Nisga'a Lands & Village Lands/Lava Bed Park

Cassiar District & Range 5 Coast District

The intended plot size of this plan is 864mm in width by 560mm in height when plotted at a scale of 1: 5000 (use D size sheet)

BCGS: 1031.092/93.93M.042/51/52/61.103P.003/04/14/15/25/26/36/46/56/57/67/68/69/70

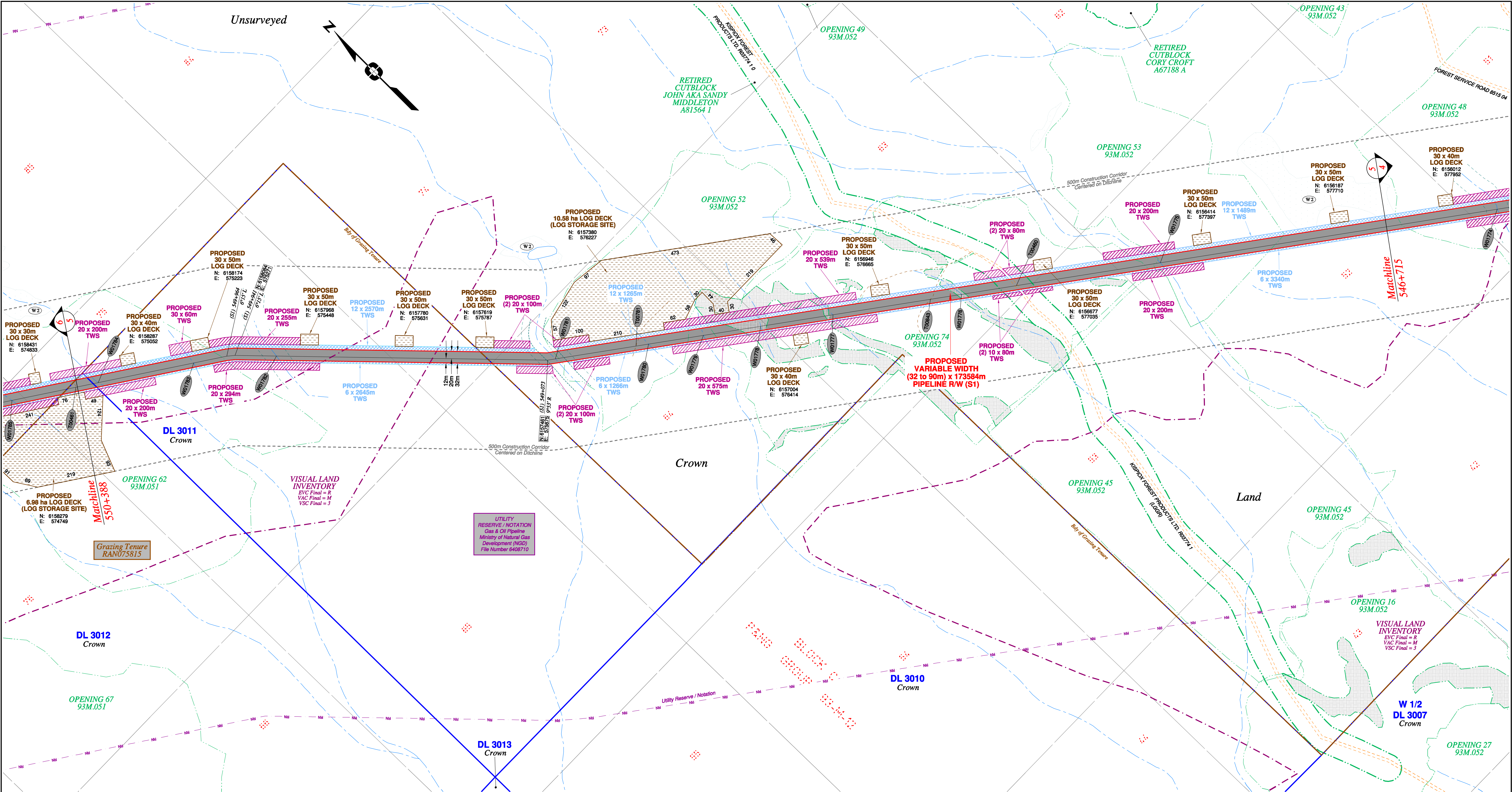
Sheet 4 of 49

**FOCUS**  
Focus Surveys (BC) Limited Partnership  
10715 - 100th Avenue Fort St. John BC  
V1J 1Z3 250.787.0300 www.focus.ca

**FOCUS:**  
AFPE: 130275CP05R1  
TCPL: 004776-09-ML-03-140  
ePASS: 10048852

REV. 1



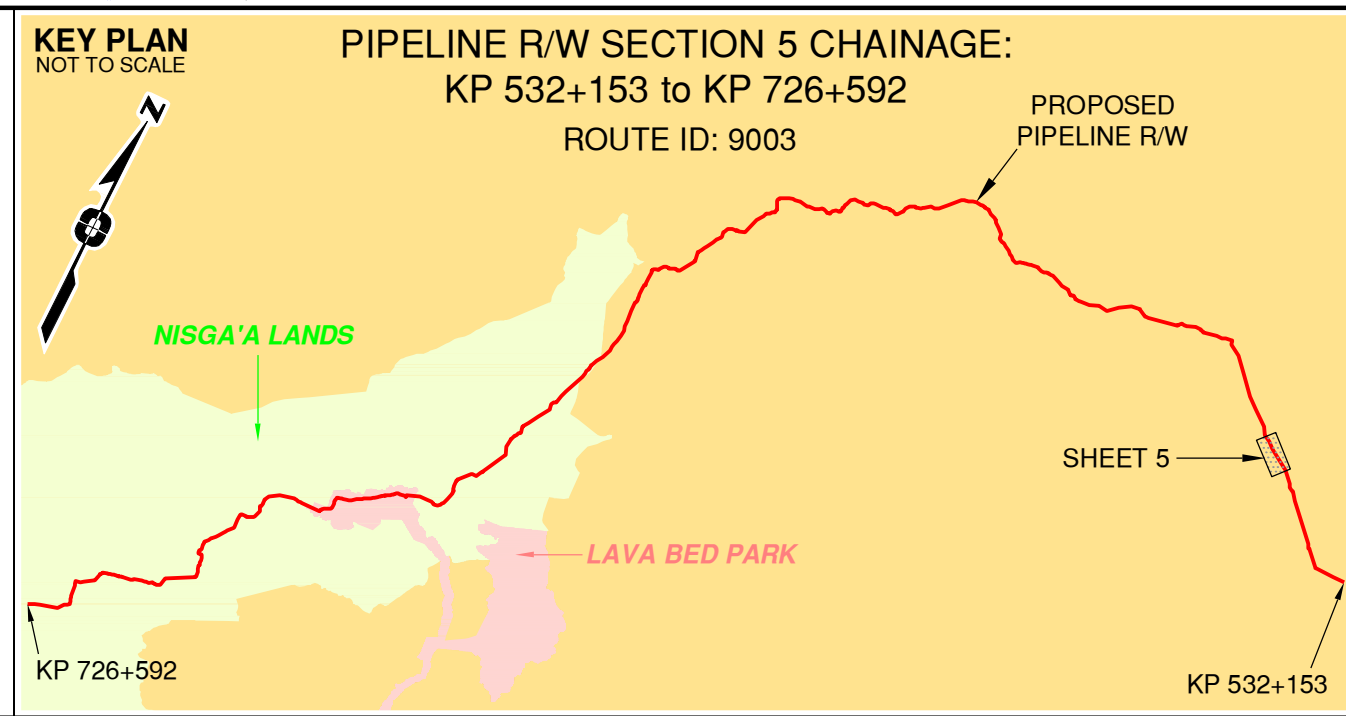


Rev	Revision Description	Date(Y/M/D)	By
0	Original Plan Prepared	2014/09/19	DC
1	Construction Plan Based on Rev.0 (2014/09/12) Except for New Construction Corridor: Shape, Label, Area Table & ePass Corrected Area on (S1)	2014/12/31	DC

NOTES:

- Co-ordinates are NAD 83 Grid, UTM Zone 9 and Zone 10. Distances shown are in metres and decimals thereof. Chainages are two-dimensional and are on pipeline ditchline. Pipeline segment length derived from ditchline chainages.
- Fault Lines data has been provided from BGC Engineering Inc. Desktop Study dated December 20, 2013.
- Water crossing information has been provided by Stantec. Wetlands data has been provided by Stantec dated August 29, 2014. Freshwater Atlas wetlands outside of construction corridor have been removed from scenery.
- Outblock data is confirmed using information from the Government of BC websites for Forest MapView and MapBC.
- This pipeline section is partially within the Agricultural Land Reserve.
- Field Survey Completed July 15, 2014
- This plan represents the best information available at the time of survey. Focus Surveys and its employees take no responsibility for the location of any underground conduits, pipes, or other facilities whether shown on or omitted from this plan. All underground installations should be located by the respective authorities prior to construction.

LEGEND
Proposed Pipeline R/W shown thus:
Proposed Temp. Workspaces shown thus:
Proposed Log Decks & Storage Sites shown thus:
Right of Way shown thus:
Roads shown thus:
Highway shown thus:
Railway line shown thus:
Seismic line/trail shown thus:
Recreation Tenure shown thus:
Drainages shown thus:
Buried cable shown thus:
Buried pipe shown thus:
Overhead powerline shown thus:
Riparian Reserve Zone shown thus:
Riparian Management Zone shown thus:
Forest Cover Reserve shown thus:
Archaeological site shown thus:
Agricultural Land Reserve shown thus:
Coal Tenure shown thus:
Cutblock shown thus:
Fence body shown thus:
Fish/Wildlife Reserve body shown thus:
Grazing Tenure body shown thus:
Mineral Claim body shown thus:
Tree Farm Licence shown thus:
Quarry Reserve body shown thus:
Ungulate Winter Range body shown thus:
Visual Land Inventory shown thus:
Watershed Reserve body shown thus:
Wind Tenure body shown thus:
Woodlot body shown thus:
Fault Line shown thus:
Misc. Reserve/Notation body shown thus:
Misc. Licence/Permit body shown thus:
Stantec Wetland / Classification shown thus:
Crossings shown thus:
Old Growth Management Area shown thus:
Residences shown thus:
Nisga'a Lands shown thus:
Nisga'a Village Lands shown thus:
Lava Bed Park shown thus:



APPROVED BY
PROJECT ENGINEER

No.	STATION	DESCRIPTION	OWNER
W01784	(S1) 550+329	Trib to Murder Creek / Non-classified drainage / RRZ=0 RMZ=0	N 6158299 E 574949 ILMB
W01783	(S1) 550+058	Trib to Murder Creek / No visible channel / RRZ=0 RMZ=0	N 6158150 E 575175 ILMB
W01782	(S1) 549+827	Trib to Murder Creek / S5 / RRZ=0 RMZ=30	N 6158001 E 575351 ILMB
W01781	(S1) 549+052	Trib to Murder Creek / S3 / RRZ=20 RMZ=20	N 6157448 E 575893 ILMB
T00781	(S1) 548+825	Trail / Condition Unknown	N 6157315 E 576076 Crown
W01780	(S1) 548+790	Trib to Murder Creek / No visible channel / RRZ=0 RMZ=0	N 6157294 E 576105 ILMB
W01779	(S1) 548+636	Trib to Murder Creek / Non-classified drainage / RRZ=0 RMZ=0	N 6157203 E 576230 ILMB
W01778	(S1) 548+475	Trib to Murder Creek / Non-classified drainage / RRZ=0 RMZ=0	N 6157109 E 576360 ILMB
W01777	(S1) 548+272	Trib to Murder Creek / Non-classified drainage / RRZ=0 RMZ=0	N 6156990 E 576524 ILMB
T00843	(S1) 547+997	Trail / Condition Unknown	N 6156828 E 576746 Crown
W01776	(S1) 547+910	Trib to Murder Creek / No visible channel / RRZ=0 RMZ=0	N 6156777 E 576817 ILMB
T00460	(S1) 547+756	Forestry Road / LGGR / R03774 1	N 6156686 E 576942 Kispiox Forest Prod. Ltd.
W01775	(S1) 547+351	Trib to Murder Creek / RRZ=0 RMZ=30	N 6156449 E 577269 ILMB

Prince Rupert Gas Transmission Project

**PRINCE RUPERT GAS TRANSMISSION LTD.**

PROPOSED VARIABLE WIDTH (32 to 90m) PIPELINE R/W FROM d-59-I, 93-M-5 TO c-71-D, 103-P-3 (S1), c-71-D TO d-63-D, 103-P-3 (S2 & S3) & FROM d-63-D, 103-P-3 TO a-71-J, 103-I-13 (S4) (SHEET CHAINAGE: 546+715 TO 550+388)

Unsurveyed Crown Land/Crown Land/Private Land/Nisga'a Lands & Village Lands/Lava Bed Park Cassiar District & Range 5 Coast District

100 200 300 400

The intended plot size of this plan is 884mm in width by 580mm in height when plotted at a scale of 1: 5000 (use D size sheet)

BCGS:1031.092/93.93M.042/51/52/61,103P.003/04/14/15/25/26/36/46/56/57/67/68/69/70

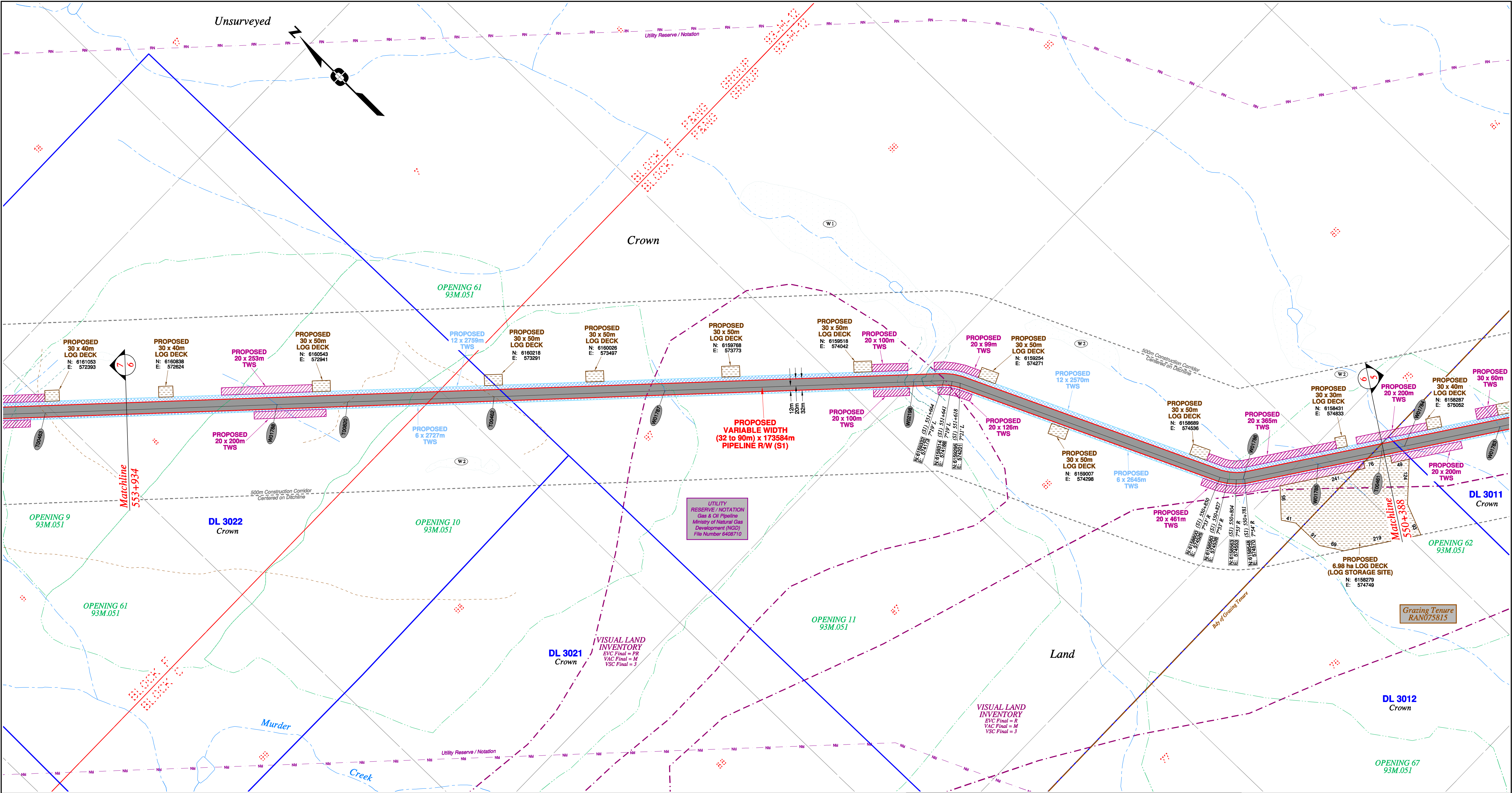
**FOCUS**  
Focus Surveys (BC) Limited Partnership  
10715 - 100th Avenue Fort St John BC  
V1J 1Z3 250.787.0300 www.focus.ca

**FOCUS:**  
AFPE:  
TCPL:  
ePASS:

130275CP05R1  
5005948  
004776-09-ML-03-141  
10048852

REV. 1



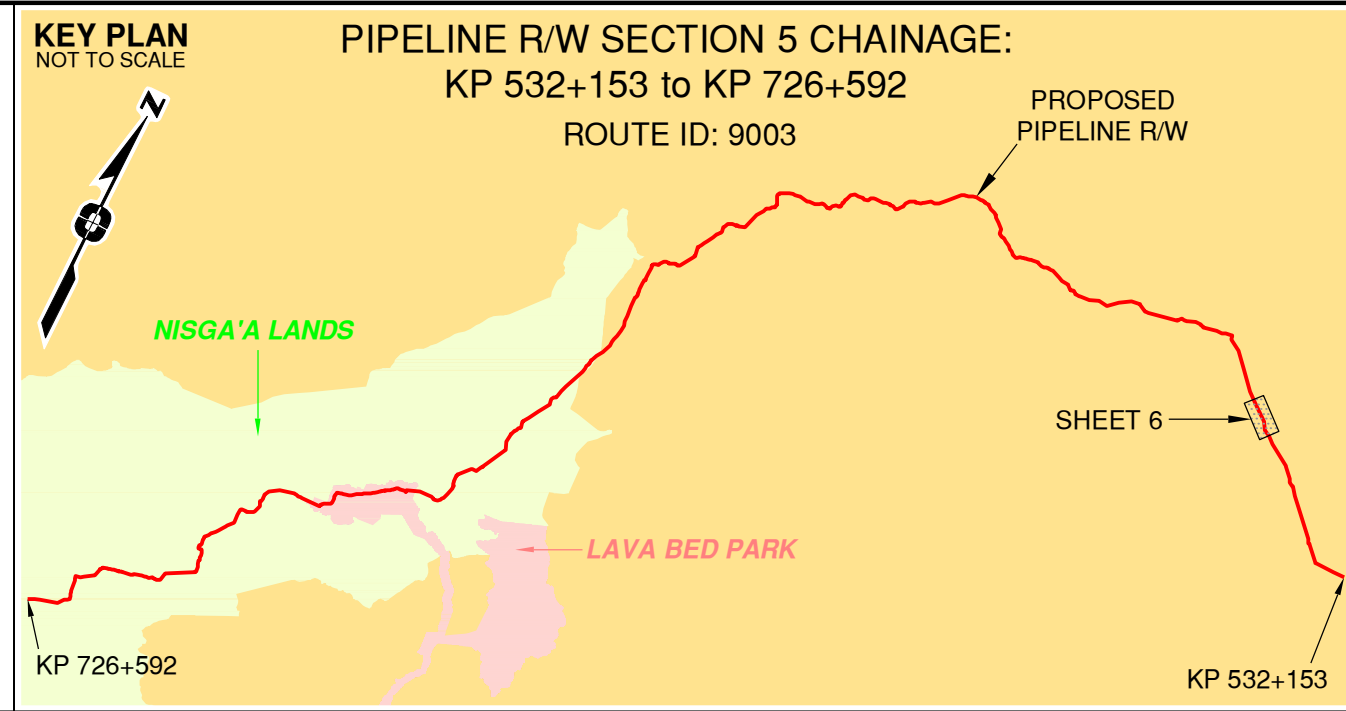


Rev	Revision Description	Date(Y/M/D)	By
0	Original Plan Prepared	2014/09/19	DC
1	Construction Plan Based on Rev.0 (2014/09/12) Except for New Construction Corridor: Shape, Label, Area Table & ePass Corrected Area on (S1)	2014/12/31	DC

NOTES:

- Co-ordinates are NAD 83 Grid, UTM Zone 9 and Zone 10. Distances shown are in metres and decimals thereof. Chainages are two-dimensional and are on pipeline ditchline. Pipeline segment length derived from ditchline chainages.
- Fault Lines data has been provided from BGC Engineering Inc. Desktop Study dated December 20, 2013.
- Water crossing information has been provided by Stantec. Wetlands data has been provided by Stantec dated August 29, 2014. Freshwater Atlas wetlands outside of construction corridor have been removed from scenery.
- Cutblock data is confirmed using information from the Government of BC websites for Forest MapView and MapBC.
- This pipeline section is partially within the Agricultural Land Reserve.
- Field Survey Completed July 15, 2014
- This plan represents the best information available at the time of survey. Focus Surveys and its employees take no responsibility for the location of any underground conduits, pipes, or other facilities whether shown on or omitted from this plan. All underground installations should be located by the respective authorities prior to construction.

LEGEND
Proposed Pipeline R/W shown thus:
Proposed Temp. Workspaces shown thus:
Proposed Log Decks & Storage Sites shown thus:
Right of Way shown thus:
Roads shown thus:
Highway shown thus:
Railway line shown thus:
Seismic line/trail shown thus:
Recreation Tenure shown thus:
Drainages shown thus:
Buried cable shown thus:
Buried pipe shown thus:
Overhead powerline shown thus:
Riparian Reserve Zone shown thus:
Forest Management Zone shown thus:
Forest Cover Reserve shown thus:
Archaeological site shown thus:
Agricultural Land Reserve shown thus:
Coal Tenure body shown thus:
Cutblock body shown thus:
Fence body shown thus:
Fish/Wildlife Reserve body shown thus:
Grazing Tenure body shown thus:
Mineral Claim body shown thus:
Tree Farm Licence shown thus:
Quarry Reserve body shown thus:
Ungulate Winter Range body shown thus:
Visual Land Inventory shown thus:
Watershed Reserve body shown thus:
Wind Tenure body shown thus:
Woodlot body shown thus:
Fault Line shown thus:
Misc. Reserve/Notation body shown thus:
Misc. Licence/Permit body shown thus:
Stantec Wetland / Classification shown thus:
Crossings shown thus:
Old Growth Management Area shown thus:
Residences shown thus:
Nisga'a Lands shown thus:
Nisga'a Village Lands shown thus:
Lava Bed Park shown thus:



APPROVED BY \_\_\_\_\_

PROJECT ENGINEER \_\_\_\_\_

No.	STATION	DESCRIPTION	OWNER
W01788	(S1) 553+517	Trib to Murder Creek / Non-classified drainage / RRZ=0 RMZ=0	N 6160594 E 572817 ILMB
T00820	(S1) 553+321	Trail / Condition Unknown	N 6160461 E 572961 Crown
T00462	(S1) 552+914	Trail / Condition Unknown	N 6160183 E 573259 Crown
W01787	(S1) 552+439	Trib to Murder Creek / No visible channel / RRZ=0 RMZ=0	N 6159860 E 573606 ILMB
W02198	(S1) 551+748	Trib to Murder Creek / S3 / RRZ=30 RMZ=20	N 6159389 E 574112 ILMB
W01786	(S1) 550+786	Trib to Murder Creek / Non-classified drainage / RRZ=0 RMZ=0	N 6158550 E 574568 ILMB
W01785	(S1) 550+574	Trib to Murder Creek / Non-classified drainage / RRZ=0 RMZ=0	N 6158433 E 574744 ILMB
T00461	(S1) 550+393	Trail / Condition Unknown	N 6158334 E 574896 Crown

TABLE OF CROSSINGS

Prince Rupert Gas Transmission Project

**PRINCE RUPERT GAS TRANSMISSION LTD.**

PROPOSED VARIABLE WIDTH (32 to 90m) PIPELINE R/W FROM d-59-I, 93-M-5 TO c-71-D, 103-P-3 (S1), c-71-D TO d-63-D, 103-P-3 (S2 & S3) & FROM d-63-D, 103-P-3 TO a-71-J, 103-I-13 (S4) (SHEET CHAINAGE: 550+388 TO 553+934)

Unsurveyed Crown Land/Crown Land/Private Land/Nisga'a Lands & Village Lands/Lava Bed Park/Cassiar District & Range 5 Coast District

BCGS:1031.092/93.93M.042/51/52/61.103P.003/04/14/15/25/26/36/46/56/57/67/68/69/70

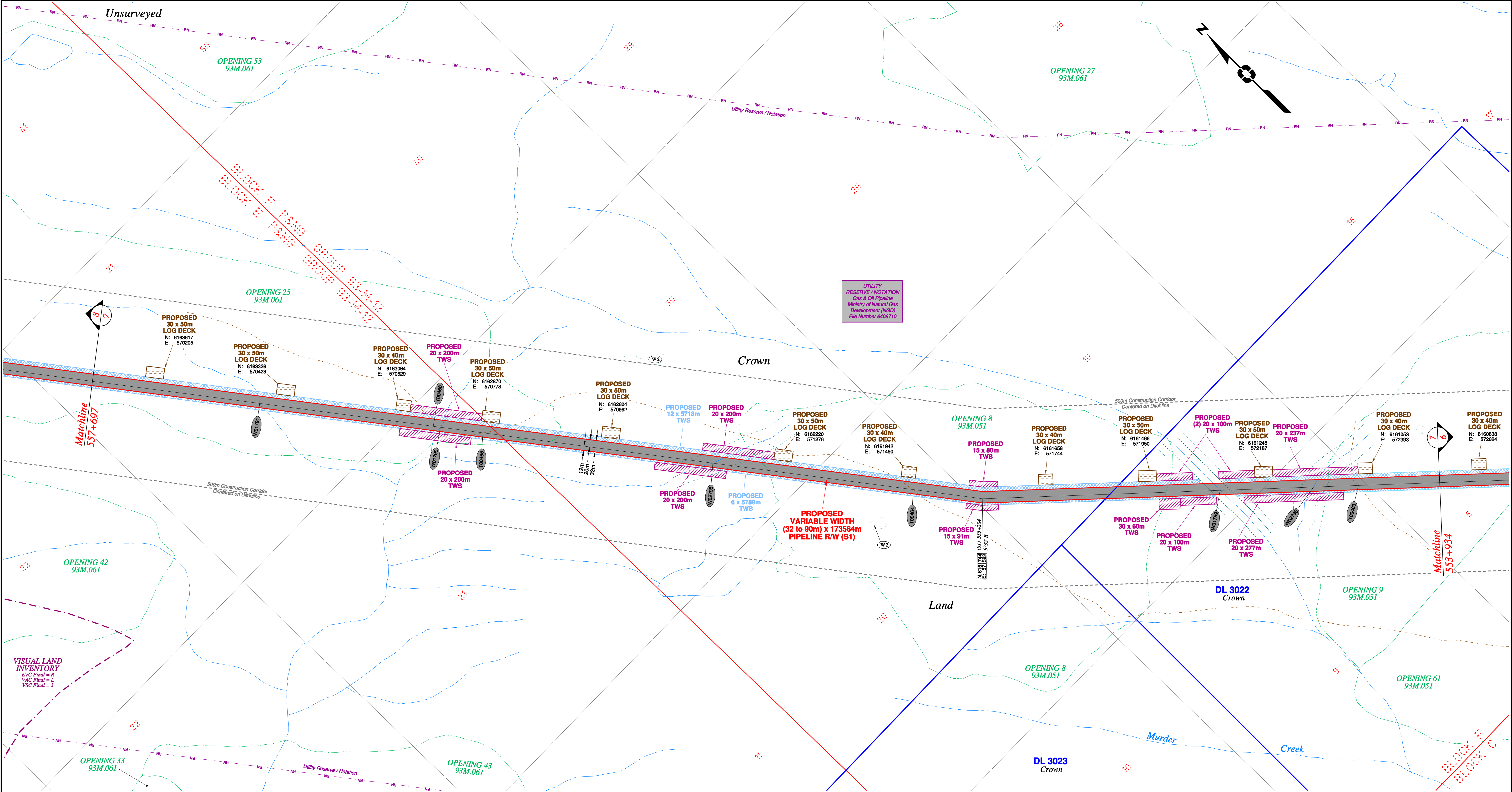
Sheet 6 of 49

**FOCUS**  
Focus Surveys (BC) Limited Partnership  
10715 - 100th Avenue Fort St John BC  
V1J 1Z3 250.787.0300 www.focus.ca

FOCUS: 130275CP05R1  
AFE: 5005948  
TCPL: 004776-09-ML-03-142  
ePASS: 10048852

REV. 1



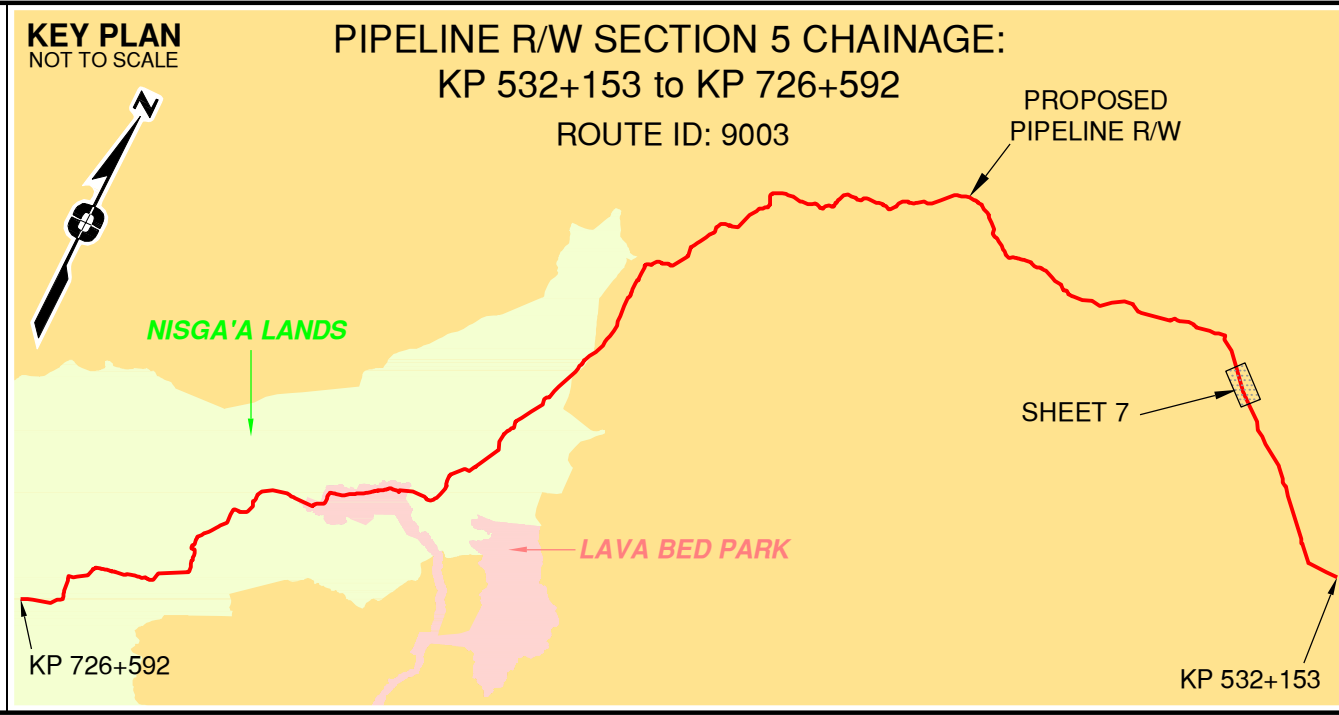


Rev	Revision Description	Date(Y/M/D)	By
0	Original Plan Prepared	2014/09/19	DC
1	Construction Plan Based on Rev.0 (2014/09/12) Except for New Construction Corridor: Shape, Label, Area Table & ePass Corrected Area on (S1)	2014/12/31	DC

NOTES:

- Co-ordinates are NAD 83 Grid, UTM Zone 9 and Zone 10. Distances shown are in metres and decimals thereof. Chainages are two-dimensional and are on pipeline ditchline. Pipeline segment length derived from ditchline chainages.
- Fault Lines data has been provided from BGC Engineering Inc. Desktop Study dated December 20, 2013.
- Water crossing information has been provided by Stantec. Wetlands data has been provided by Stantec dated August 29, 2014. Freshwater Atlas wetlands outside of construction corridor have been removed from scenery.
- Cutblock data is confirmed using information from the Government of BC websites for Forest MapView and MapBC.
- This pipeline section is partially within the Agricultural Land Reserve.
- Field Survey Completed July 15, 2014
- This plan represents the best information available at the time of survey. Focus Surveys and its employees take no responsibility for the location of any underground conduits, pipes, or other facilities whether shown on or omitted from this plan. All underground installations should be confirmed by field construction.

LEGEND
Proposed Pipeline R/W shown thus:
Proposed Temp. Workspaces shown thus:
Proposed Log Decks & Storage Sites shown thus:
Right of Way shown thus:
Roads shown thus:
Highway shown thus:
Railway line shown thus:
Seismic line/trail shown thus:
Recreation Tenure shown thus:
Drainages shown thus:
Buried cable shown thus:
Buried pipe shown thus:
Overhead powerline shown thus:
Riparian Reserve Zone shown thus:
Forest Cover Reserve shown thus:
Archaeological site shown thus:
Agricultural Land Reserve bdy shown thus:
Coal Tenure bdy shown thus:
Cutblock bdy shown thus:
Fence bdy shown thus:
Fish/Wildlife Reserve bdy shown thus:
Grazing Tenure bdy shown thus:
Mineral Claim bdy shown thus:
Tree Farm Licence shown thus:
Quarry Reserve bdy shown thus:
Ungulate Winter Range bdy shown thus:
Visual Land Inventory shown thus:
Watershed Reserve bdy shown thus:
Wind Tenure bdy shown thus:
Woodlot bdy shown thus:
Misc Reserve/Notation bdy shown thus:
Misc Licence/Permit bdy shown thus:
Stantec Wetland / Classification shown thus:
Crossings shown thus:
Old Growth Management Area shown thus:
Residences shown thus:
Nisga'a Lands shown thus:
Nisga'a Village Lands shown thus:
Lava Bed Park shown thus:
Power Pole shown thus:



APPROVED BY \_\_\_\_\_

PROJECT ENGINEER \_\_\_\_\_

No.	STATION	DESCRIPTION	NAD 83 UTM ZONE 9	OWNER
W01791	(S1) 557+229	Trib to Cullon Creek / No visible channel / RRZ=0 RMZ=0	N 6163351 E 5703950	ILMB
T00466	(S1) 556+743	Trib / Condition Unknown	N 6162965 E 5706466	Crown
W01790	(S1) 556+723	Trib to Cullon Creek / Non-classified drainage / RRZ=0 RMZ=0	N 6162949 E 5706558	ILMB
W00465	(S1) 556+604	Trail / Condition Unknown	N 6162855 E 5707390	Crown
W02795	(S1) 555+961	Trib to Murder Creek / S4 / RRZ=0 RMZ=30	N 6162344 E 571122	ILMB
T00464	(S1) 555+399	Trail / Condition Unknown	N 6161899 E 571464	Crown
W01789	(S1) 554+545	Trib to Murder Creek / S3 / RRZ=20 RMZ=20	N 6161295 E 572065	ILMB
W02796	(S1) 554+285	Trib to Murder Creek / S4 / RRZ=0 RMZ=30	N 6161118 E 572255	ILMB
T00463	(S1) 554+161	Trail / Condition Unknown	N 6161033 E 572346	Crown

Prince Rupert Gas Transmission Project

**PRINCE RUPERT GAS TRANSMISSION LTD.**

PROPOSED VARIABLE WIDTH (32 to 90m) PIPELINE R/W FROM d-59-I, 93-M-5 TO c-71-D, 103-P-3 (S1), c-71-D TO d-63-D, 103-P-3 (S2 & S3) & FROM d-63-D, 103-P-3 TO a-71-J, 103-I-13 (S4) (SHEET CHAINAGE: 553+934 TO 557+697)

Unsurveyed Crown Land/Crown Land/Private Land/Nisga'a Lands & Village Lands/Lava Bed Park Cassiar District & Range 5 Coast District

The intended plot size of this plan is 864mm in width by 560mm in height when plotted at a scale of 1: 5000 (use D size sheet)

BCGS:1031.092/93.93M.042/51/52/61.103P.003/04/14/15/25/26/36/46/56/57/67/68/69/70

Sheet 7 of 49

**FOCUS**

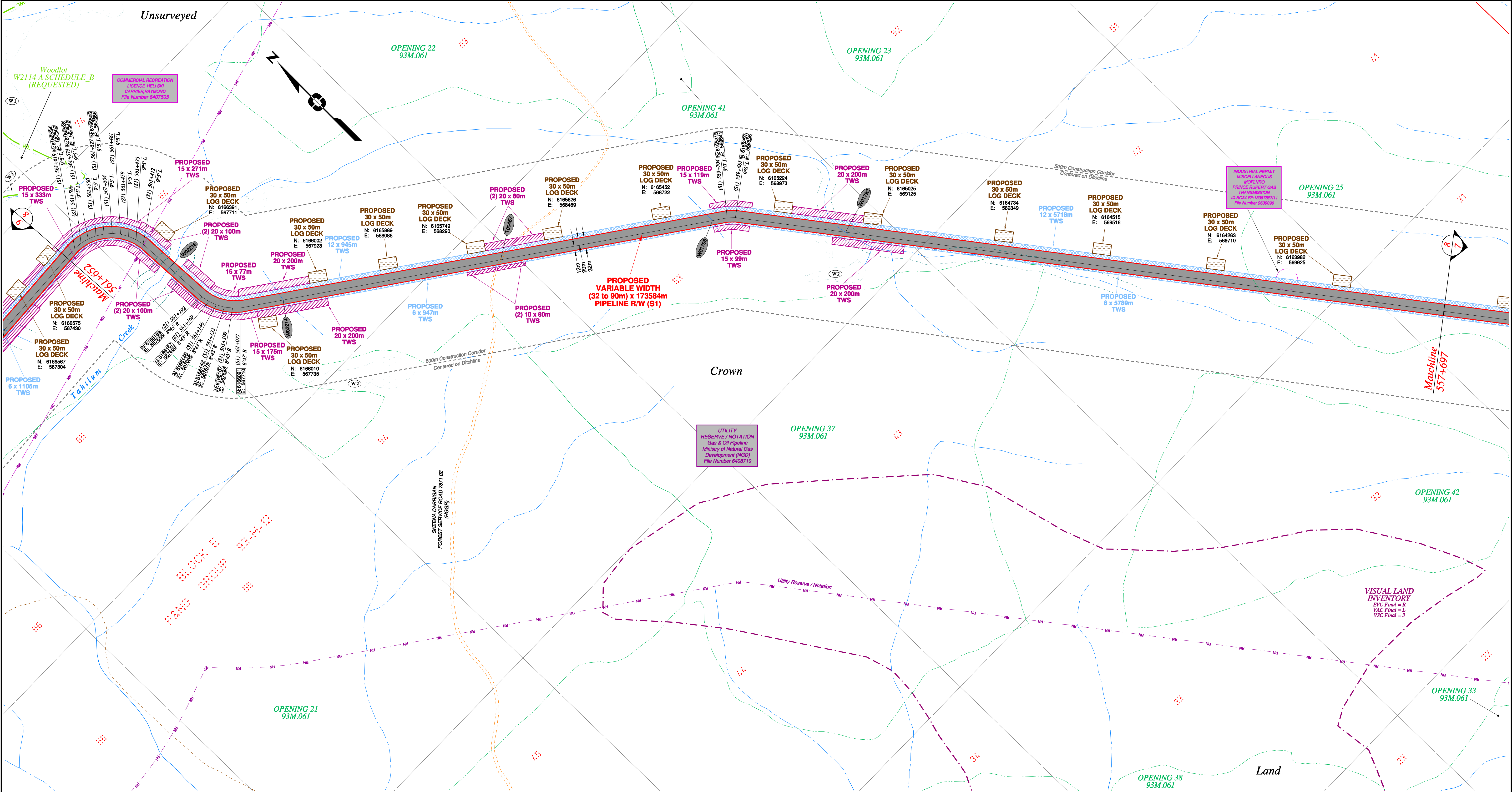
Focus Surveys (BC) Limited Partnership

10715 - 100th Avenue Fort St John BC V1J 2J2 250.787.0300 www.focus.ca

FOCUS: 130275CP05R1  
AFCE: 5005948  
TCPL: 004776-09-ML-03-143  
ePASS: 10048852

REV. 1



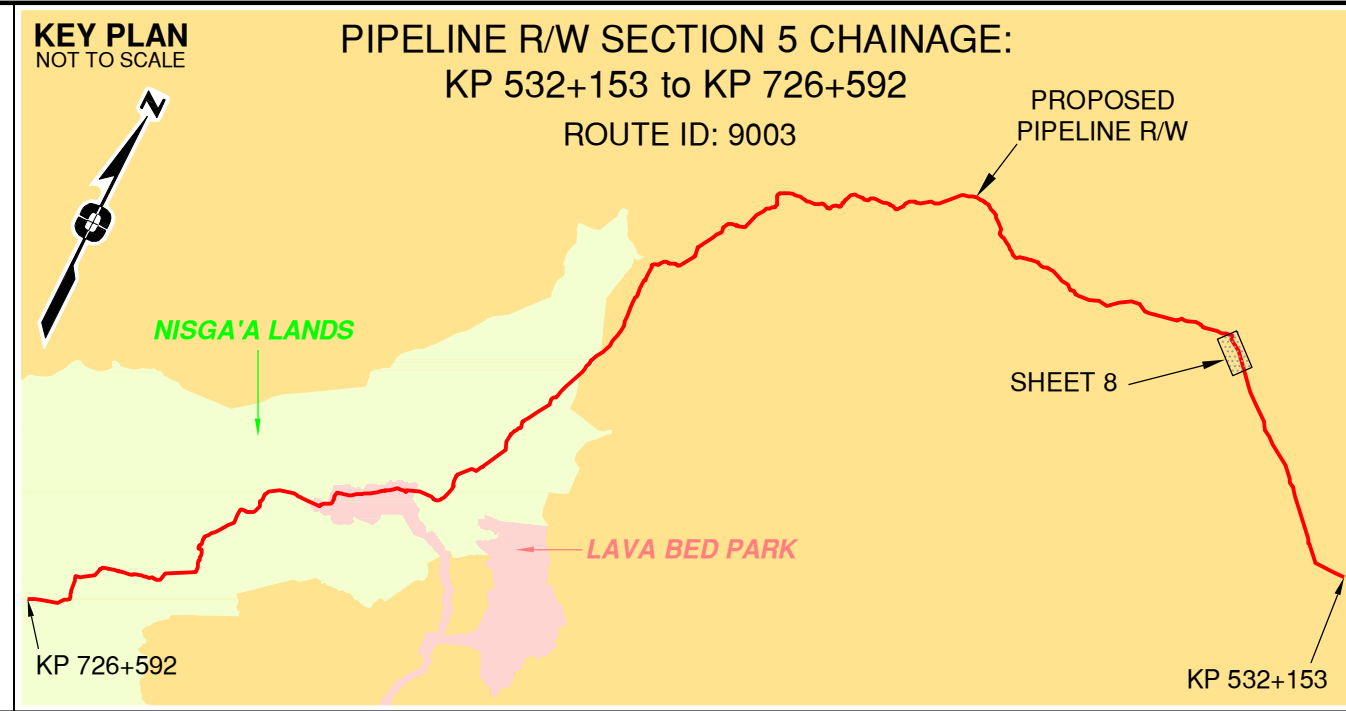


Rev	Revision Description	Date(Y/M/D)	By
0	Original Plan Prepared	2014/09/19	DC
1	Construction Plan Based on Rev.0 (2014/09/12) Except for New Construction Corridor: Shape, Label, Area Table & ePass Corrected Area on (S1)	2014/12/31	DC

NOTES:

- Co-ordinates are NAD 83 Grid, UTM Zone 9 and Zone 10. Distances shown are in metres and decimals thereof. Chainages are two-dimensional and are on pipeline ditchline. Pipeline segment length derived from ditchline chainages.
- Fault Lines data has been provided from BGC Engineering Inc. Desktop Study dated December 20, 2013.
- Water crossing information has been provided by Stantec. Wetlands data has been provided by Stantec dated August 29, 2014. Freshwater Atlas wetlands outside of construction corridor have been removed from scenery.
- Cutblock data is confirmed using information from the Government of BC websites for Forest MapView and MapBC.
- This pipeline section is partially within the Agricultural Land Reserve.
- Field Survey Completed July 15, 2014
- This plan represents the best information available at the time of survey. Focus Surveys and its employees take no responsibility for the location of any underground conduits, pipes, or other facilities whether shown on or omitted from this plan. All underground installations should be verified by field survey.

LEGEND
Proposed Pipeline R/W shown thus:
Proposed Temp. Workspaces shown thus:
Proposed Log Decks & Storage Sites shown thus:
Right of Way shown thus:
Roads shown thus:
Highway shown thus:
Railway line shown thus:
Seismic line/trail shown thus:
Recreation Tenure shown thus:
Drainages shown thus:
Buried cable shown thus:
Buried pipe shown thus:
Overhead powerline shown thus:
Riparian Reserve Zone shown thus:
Forest Cover Reserve shown thus:
Archaeological site shown thus:
Agricultural Land Reserve bdy shown thus:
Coal Tenure bdy shown thus:
Cutblock bdy shown thus:
Fence bdy shown thus:
Fish/Wildlife Reserve bdy shown thus:
Grazing Tenure bdy shown thus:
Mineral Claim bdy shown thus:
Tree Farm Licence shown thus:
Quarry Reserve bdy shown thus:
Ungulate Winter Range bdy shown thus:
Visual Land Inventory shown thus:
Watershed Reserve bdy shown thus:
Wind Tenure bdy shown thus:
Woodlot bdy shown thus:
Fault Line shown thus:
Misc. Reserve/Notation bdy shown thus:
Misc. Licence/Permit bdy shown thus:
Stantec Wetland / Classification shown thus:
Crossings shown thus:
Old Growth Management Area shown thus:
Residences shown thus:
Nisga'a Lands shown thus:
Nisga'a Village Lands shown thus:
Lava Bed Park shown thus:



APPROVED BY

PROJECT ENGINEER

No.	STATION	DESCRIPTION	NAD 83 UTM ZONE 9	OWNER
W02216	(S1) 561+315	Tahtlum Creek / S3 / RRZ-20 RMZ-20	N 6166311 E 567648	ILMB
W02214	(S1) 560+958	Trib to Tahtlum Creek / Non-classified drainage / RRZ-0 RMZ-0	N 6166023 E 567809	ILMB
T00467	(S1) 560+344	Forest Service Road (Skeena Carrigan) / HGGR / FSR 7871 02	N 6165675 E 568314	Dist. Manager Skeena Stikine
W01795	(S1) 559+747	Trib to Tahtlum Creek / No visible channel / RRZ-0 RMZ-0	N 6165337 E 568807	ILMB
W01792	(S1) 559+373	Trib to Tahtlum Creek / S6 / RRZ-0 RMZ-20	N 6165052 E 569046	ILMB

Prince Rupert Gas Transmission Project

**PRINCE RUPERT GAS TRANSMISSION LTD.**

PROPOSED VARIABLE WIDTH (32 to 90m) PIPELINE R/W FROM d-59-I, 93-M-5 TO c-71-D, 103-P-3 (S1), c-71-D TO d-63-D, 103-P-3 (S2 & S3) & FROM d-63-D, 103-P-3 TO a-71-J, 103-I-13 (S4) (SHEET CHAINAGE: 557+697 TO 561+652)

Unsurveyed Crown Land/Crown Land/Private Land/Nisga'a Lands & Village Lands/Lava Bed Park Cassiar District & Range 5 Coast District

TransCanada  
In business to deliver

FOCUS  
Focus Surveys (BC) Limited Partnership  
10715 - 100th Avenue, Fort St. John, BC  
V1J 1Z3 - 250.787.0300, www.focus.ca

FOCUS: 130275CP05R1  
AFE: 5005948  
TCPL: 004776-09-ML-03-144  
ePASS: 10048852

REV. 1