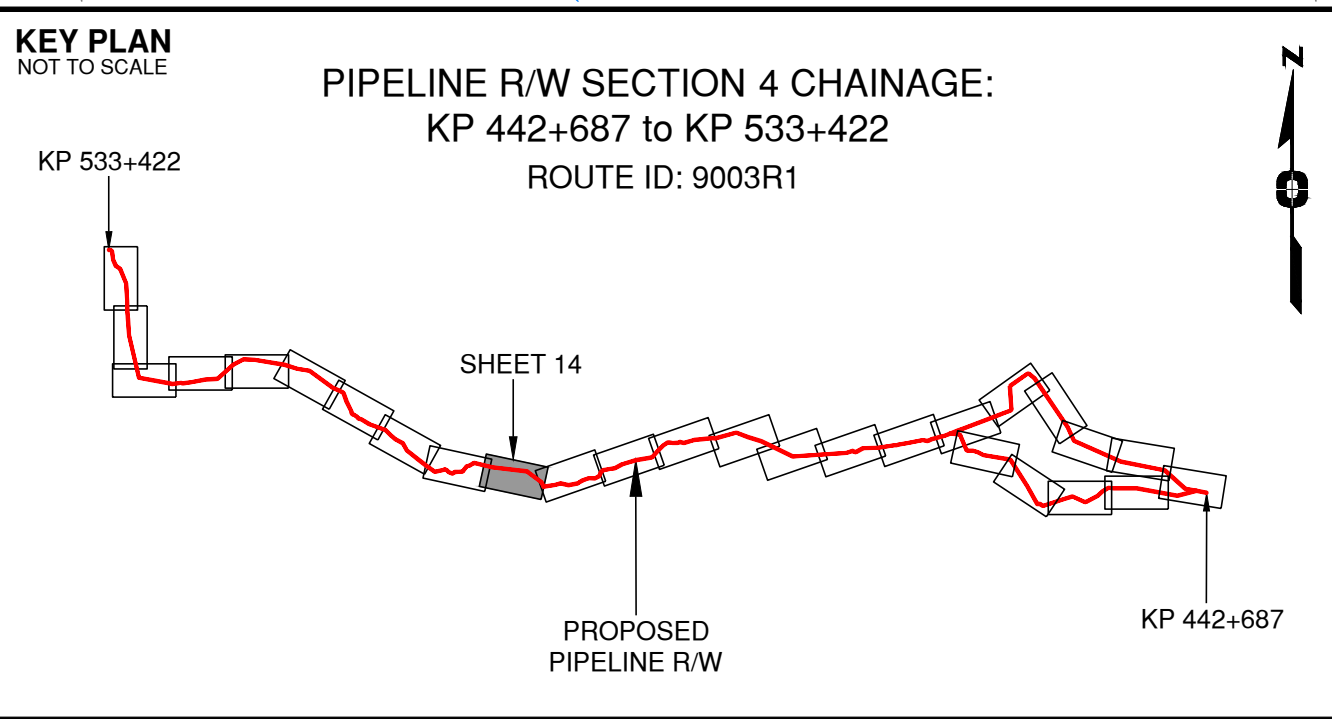


Rev	Revision Description	Date(Y/M/D)	By
0	Original Plan Prepared	2014/09/17	DC
1	Add P/L R/W (S3), Babine Lake - KP 443+346 to 462+675 Update P/L R/W (S2), Nilkitwa Lake - KP 458+764 to 463+877 Update Construction Corridor, Area Table, Tenures & Scenery	2015/01/15	DC

NOTES:

- Co-ordinates are NAD 83 Grid. UTM Zone 9 and Zone 10. Distances shown are in metres and decimals thereof. Chainages are two-dimensional and are on pipeline ditchline. Pipeline segment length derived from ditchline chainages.
- Fault Lines data has been provided from BGC Engineering Inc. Desktop Study dated December 20, 2013.
- Water crossing information has been provided by Stantec. Wetlands data has been provided by Stantec dated August 29, 2014. Freshwater Atlas wetlands outside of construction corridor have been removed from scenery.
- Outblock data is confirmed using information from the Government of BC websites for Forest MapView and MapBC.
- This pipeline section is not within the Agricultural Land Reserve.
- Field Survey Completed December 15, 2014
- This plan represents the best information available at the time of survey. WSP Surveys and its employees take no responsibility for the location of any underground conduits, pipes, or other facilities whether shown on or omitted from this plan. All underground installations should be located by the respective authorities prior to construction.

LEGEND
Proposed Pipeline R/W shown thus:
Proposed Temp. Workspaces shown thus:
Proposed Log Decks & Storage Sites shown thus:
Right of Way shown thus:
Roads shown thus:
Highway shown thus:
Railway line shown thus:
Seismic line/trail shown thus:
Recreation Tenure shown thus:
Drainages shown thus:
Buried cable shown thus:
Buried pipe shown thus:
Overhead powerline shown thus:
Forest Cover Reserve shown thus:
Riparian Management Zone shown thus:
Archaeological site shown thus:
Agricultural Land Reserve body shown thus:
Coal Tenure body shown thus:
Fence body shown thus:
Fish/Wildlife Reserve body shown thus:
Grazing Tenure body shown thus:
Mineral Claim body shown thus:
Tree Farm Licence shown thus:
Quarry Reserve body shown thus:
Ungulate Winter Range body shown thus:
Visual Land Inventory shown thus:
Watershed Reserve body shown thus:
Wind Tenure body shown thus:
Woodlot body shown thus:
Fault Line shown thus:
Misc. Reserve/Notation body shown thus:
Misc. Licence/Permit body shown thus:
Stantec Wetland / Classification shown thus:
Crossings shown thus:
Outblock body shown thus:
Residences shown thus:
Indian Reserve shown thus:



APPROVED BY
PROJECT ENGINEER

No.	STATION	DESCRIPTION	TABLE OF CROSSINGS
W01719	(S4)497+772	Trib. to Denison Creek / S6 / RRZ = 0	RMZ = 20
W03038	(S4)497+185	Trib. to Denison Creek / S6 / RRZ = 0	RMZ = 20
W03039	(S4)497+054	Trib. to Denison Creek / S5 / RRZ = 0	RMZ = 30
W01718	(S4)497+039	Trib. to Denison Creek / S6 / RRZ = 0	RMZ = 20
W03040	(S4)496+905	Trib. to Denison Creek / S6 / RRZ = 0	RMZ = 20
W03041	(S4)496+277	Trib. to Denison Creek / S6 / RRZ = 0	RMZ = 20
W01717	(S4)496+103	Trib. to Denison Creek / No visible channel	RMZ = 20
W03042	(S4)496+071	Trib. to Denison Creek / S6 / RRZ = 0	RMZ = 20
W01716	(S4)495+985	Trib. to Denison Creek / S6 / RRZ = 0	RMZ = 20
W01715	(S4)495+909	Trib. to Denison Creek / S3 / RRZ = 20	RMZ = 20
W03043	(S4)495+456	Trib. to Denison Creek / S6 / RRZ = 0	RMZ = 20
W01714	(S4)494+906	Trib. to Denison Creek / S6 / RRZ = 0	RMZ = 20
T00415	(S4)494+241	Forestry Road / LGGR / R20002 A	
No.	STATION	DESCRIPTION	NAD 83 UTM ZONE 9

Prince Rupert Gas Transmission Project

TransCanada

In business to deliver

PRINCE RUPERT GAS TRANSMISSION LTD.

PROPOSED VARIABLE WIDTH (32 to 41m) PIPELINE R/W FROM a-68-D TO a-69-D, 93-M-8 (S1), a-69-D, 93-M-8 TO d-9-G, 93-M-7 (S2 & S3) & FROM d-9-G, 93-M-7 TO d-59-I, 93-M-5 (S4) (SHEET CHAINAGE: 493+748 TO 497+901)

Unsurveyed Crown Land/Crown Land/Private Land/Indian Reserve Lands, Cassiar District

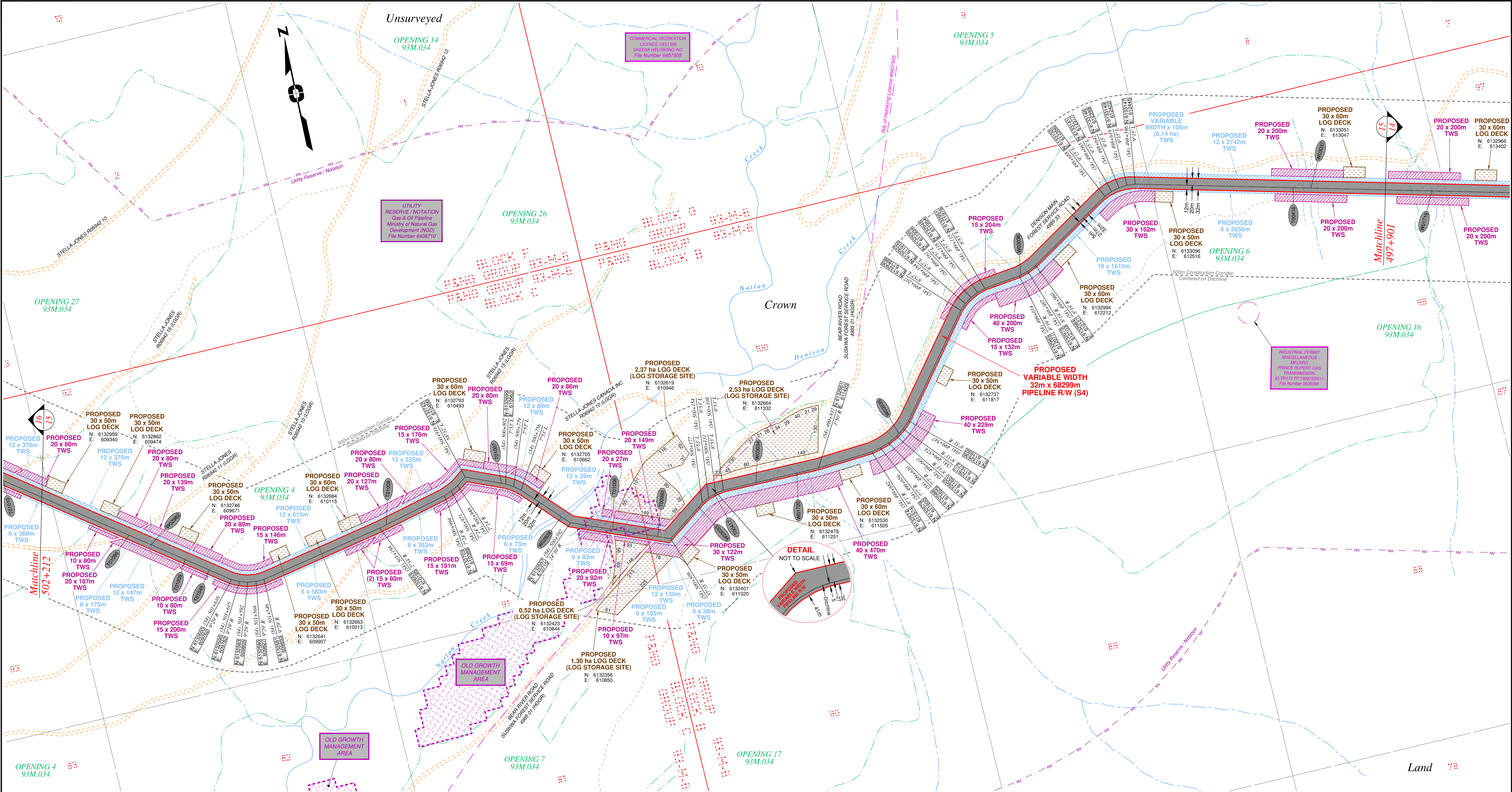
BCGS: 93M.027, 028, 033, 034, 035, 036, 037, 038, 042, 043

The intended plot size of this plan is 864mm in width by 560mm in height when plotted at a scale of 1: 5000 (use D size sheet)

Sheet 14 of 27

WSP Surveys (BC) Limited Partnership
Fort St John BC
(250) 787-0300

WSP: 130275CP04R1
AFE: 5005948
TCPL: 004776-09-ML-03-127
ePASS: 10050544

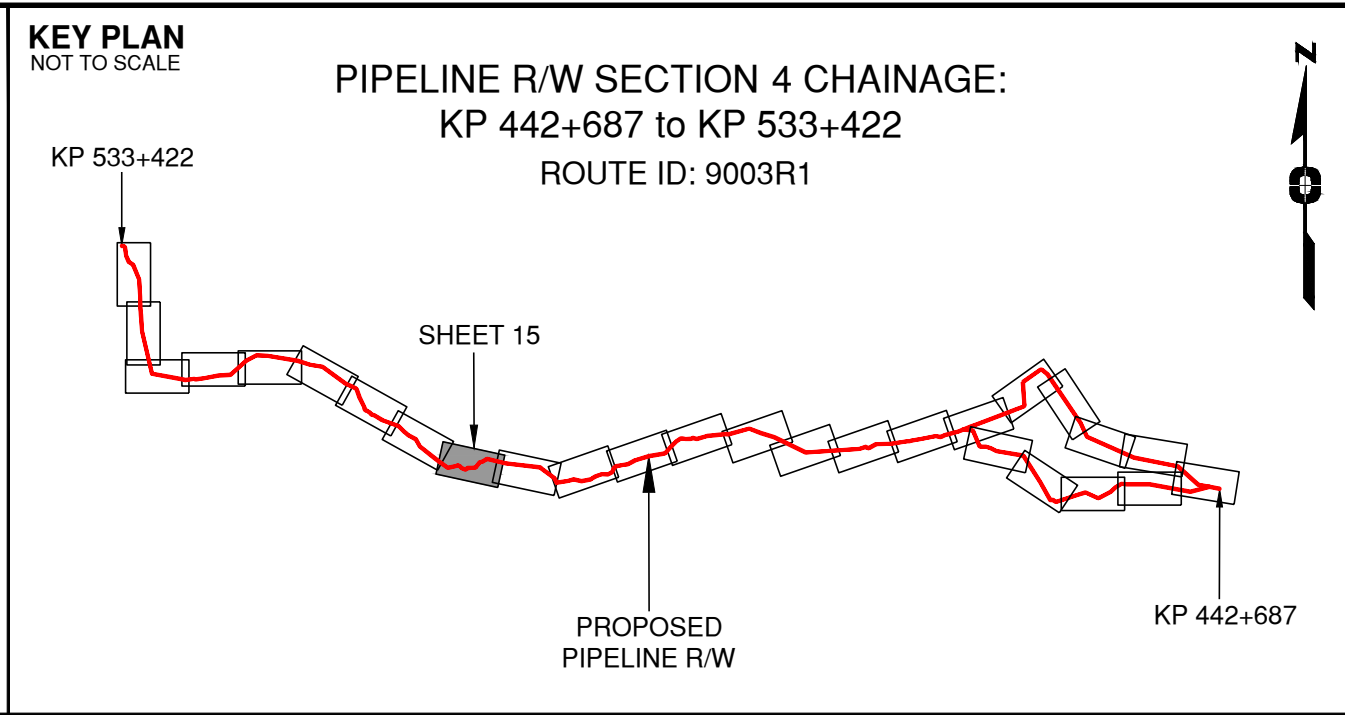


Rev	Revision Description	Date(Y/M/D)	By
0	Original Plan Prepared	2014/09/17	DC
1	Add P/L R/W (S3), Babine Lake - KP 443+346 to 462+675 Update P/L R/W (S2), Nilotikwa Lake - KP 458+764 to 463+877 Update Construction Corridor, Area Table, Tenures & Scenery	2015/01/15	DC

NOTES:

- Co-ordinates are NAD 83 Grid, UTM Zone 9 and Zone 10. Distances shown are in metres and decimals thereof. Chainages are two-dimensional and are on pipeline ditchline. Pipeline segment length derived from ditchline chainages.
- Fault Lines data has been provided from BGC Engineering Inc. Desktop Study dated December 20, 2013.
- Water crossing information has been provided by Stantec. Wetlands data has been provided by Stantec dated August 29, 2014. Freshwater Atlas wetlands outside of construction corridor have been removed from scenery.
- Cutblock data is confirmed using information from the Government of BC websites for Forest MapView and MapBC.
- This pipeline section is not within the Agricultural Land Reserve.
- Field Survey Completed December 15, 2014
- This plan represents the best information available at the time of survey. WSP Surveys and its employees take no responsibility for the location of any underground conduits, pipes, or other facilities whether shown on or omitted from this plan. All underground installations should be located by the respective authorities prior to construction.

LEGEND
Proposed Pipeline R/W shown thus:
Proposed Temp. Workspaces shown thus:
Proposed Log Decks & Storage Sites shown thus:
Right of Way shown thus:
Roads shown thus:
Highway shown thus:
Railway line shown thus:
Seismic line/trail shown thus:
Recreation Tenure shown thus:
Drainages shown thus:
Buried cable shown thus:
Buried pipe shown thus:
Overhead powerline shown thus:
Riparian Reserve Zone shown thus:
Riparian Management Zone shown thus:
Forest Cover Reserve shown thus:
Archaeological site shown thus:
Agricultural Land Reserve bdy shown thus:
Coal Tenure bdy shown thus:
Cutblock bdy shown thus:
Fence bdy shown thus:
Fish/Wildlife Reserve bdy shown thus:
Grazing Tenure bdy shown thus:
Mineral Claim bdy shown thus:
Tree Farm Licence shown thus:
Quarry Reserve bdy shown thus:
Ungulate Winter Range bdy shown thus:
Visual Land Inventory shown thus:
Watershed Reserve bdy shown thus:
Wind Tenure bdy shown thus:
Woodlot bdy shown thus:
Fault Line shown thus:
Misc. Reserve/Notation bdy shown thus:
Misc. Licence/Permit bdy shown thus:
Stantec Wetland / Classification shown thus:
Crossings shown thus:
Old Growth Management Area shown thus:
Residences shown thus:
Indian Reserve shown thus:



APPROVED BY _____

PROJECT ENGINEER _____

No.	STATION	DESCRIPTION	NAD 83 UTM ZONE	OWNER
T01056	(S4)501+948	Forestry Road / LGGR / R06942 11	N 6132780 E 609510	Stella-Jones Canada Inc.
W02982	(S4)501+882	Trib. to Naton River / Non-classified drainage	N 6132741 E 609564	ILMB
T01009	(S4)501+778	Forestry Road / Condition Unknown / R06942 10	N 6132681 E 609648	Stella-Jones Canada Inc.
T01045	(S4)501+705	Trail / Condition Unknown	N 6132639 E 609707	Crown
T01008	(S4)501+175	Forestry Road / LGGR / R06942 15	N 6132658 E 610214	Stella-Jones Canada Inc.
T01007	(S4)500+814	Forestry Road / LGGR / R06942 10	N 6132704 E 610551	Stella-Jones Canada Inc.
W02828	(S4)500+621	Natlan Creek / S1 / RRZ = 50 RMZ = 20	N 6132578 E 610694	ILMB
T01006	(S4)500+472	Forestry Road / LGGR / R06942 10	N 6132514 E 610826	Stella-Jones Canada Inc.
T00993	(S4)500+346	Forest Service Road (Suskwia) / HGGR / FSR 4985 01	N 6132488 E 610944	Timber Sales Manager Skeena
W03033	(S4)500+193	Trib. to Denison Creek / S6 / RRZ = 0 RMZ = 20	N 6132525 E 611072	ILMB
T00417	(S4)500+136	Trail / Condition Unknown	N 6132551 E 611123	Crown
W03034	(S4)500+016	Trib. to Natlan Creek / S6 / RRZ = 0 RMZ = 20	N 6132557 E 611242	ILMB
W01720	(S4)499+899	Trib. to Natlan Creek / S6 / RRZ = 0 RMZ = 20	N 6132559 E 611359	ILMB
W03035	(S4)499+591	Trib. to Denison Creek / S6 / RRZ = 0 RMZ = 20	N 6132607 E 611659	ILMB
W03036	(S4)499+009	Trib. to Denison Creek / S6 / RRZ = 0 RMZ = 20	N 6132967 E 612081	ILMB
T00416	(S4)498+157	Trail / Condition Unknown	N 6133045 E 612972	Crown
W03037	(S4)498+108	Trib. to Denison Creek / S6 / RRZ = 0 RMZ = 20	N 6133034 E 612920	ILMB
No.	STATION	DESCRIPTION	NAD 83 UTM ZONE	OWNER

TABLE OF CROSSINGS

TABLE OF CROSSINGS

PRINCE RUPERT GAS TRANSMISSION LTD.

PROPOSED VARIABLE WIDTH (32 to 41m) PIPELINE R/W FROM
a-68-D TO a-69-D, 93-M-8 (S1), a-69-D, 93-M-8 TO d-9-G, 93-M-7
(S2 & S3) & FROM d-9-G, 93-M-7 TO d-59-I, 93-M-5 (S4)
(SHEET CHAINAGE: 497+901 TO 502+212)

Unsurveyed Crown Land/Crown Land/Private Land/Indian Reserve Lands, Cassiar District

BCGS: 93M.027, 028, 033, 034, 035, 036, 037, 038, 042, 043

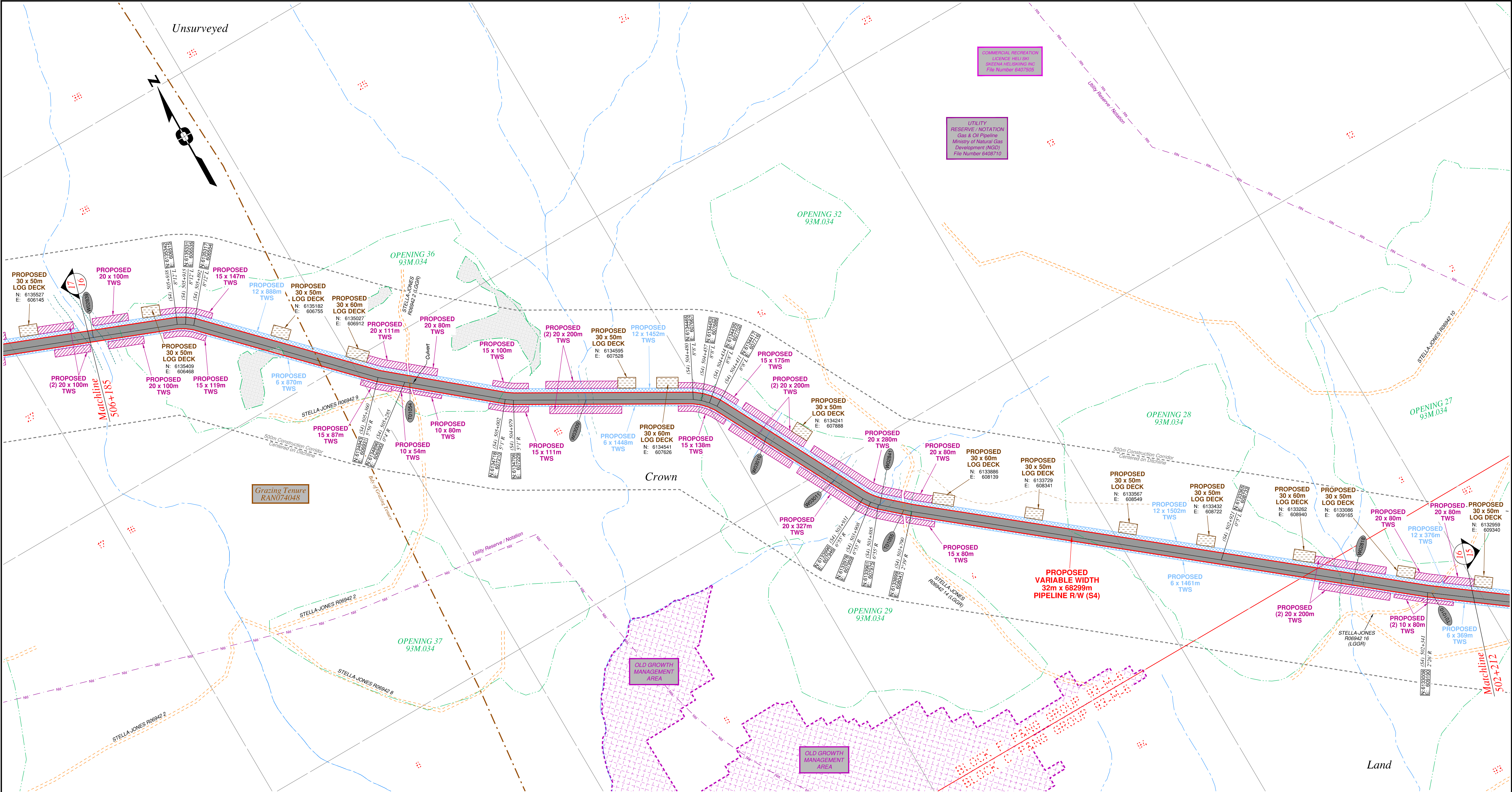
The intended plot size of this plan is 864mm in width by 560mm in height when plotted at a scale of 1: 5000 (use D size sheet)

WSP Surveys (BC) Limited Partnership
Fort St John BC
(250) 787-0300

WSP: 130275CP04R1
AFE: 5005948
TCPL: 004776-09-ML-03-128
ePASS: 10050544

Sheet 15 of 27

REV. 1

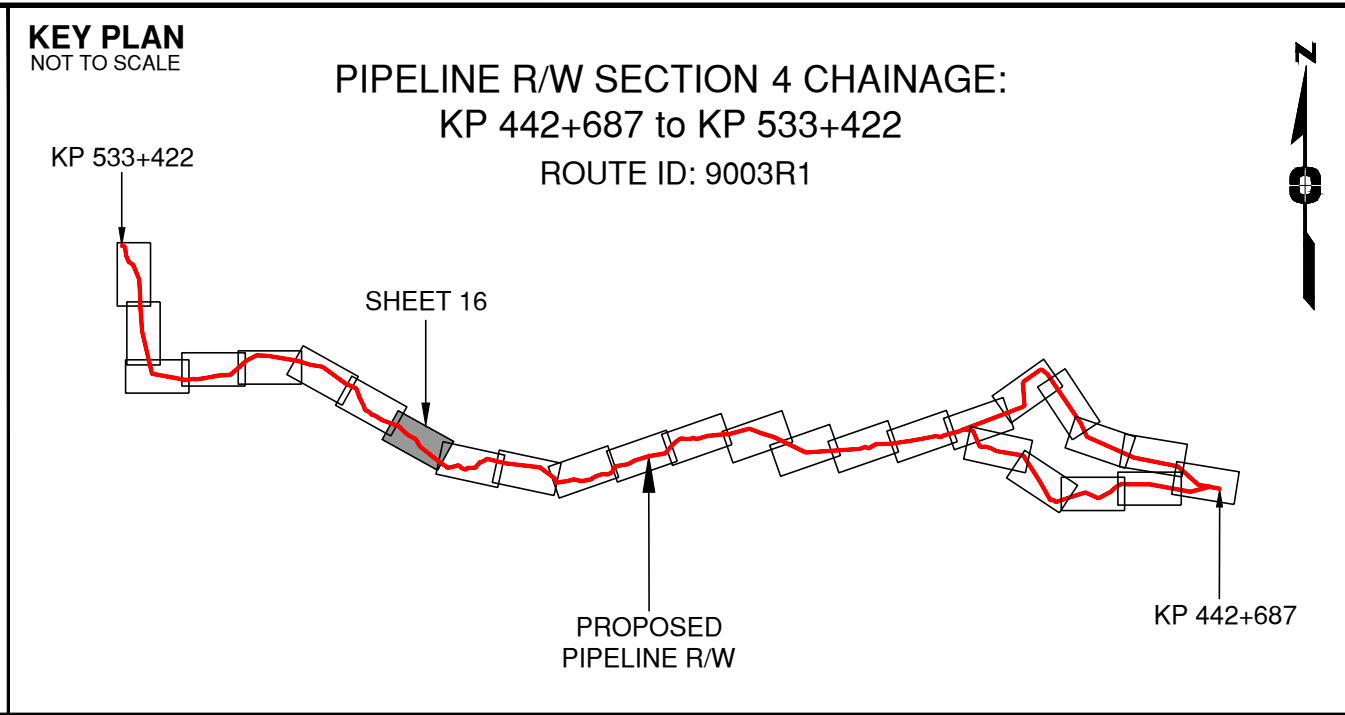


Rev	Revision Description	Date(Y/M/D)	By
0	Original Plan Prepared	2014/09/17	DC
1	Add P/L R/W (S3), Babine Lake - KP 443+346 to 462+675 Update P/L R/W (S2), Nilotika Lake - KP 458+764 to 463+877 Update Construction Corridor, Area Table, Tenures & Scenery	2015/01/15	DC

NOTES:

- Co-ordinates are NAD 83 Grid, UTM Zone 9 and Zone 10. Distances shown are in metres and decimals thereof. Chainages are two-dimensional and are on pipeline ditchline. Pipeline segment length derived from ditchline chainages.
- Fault Lines data has been provided from BGC Engineering Inc. Desktop Study dated December 20, 2013.
- Water crossing information has been provided by Stantec. Wetlands data has been provided by Stantec dated August 29, 2014. Freshwater Atlas wetlands outside of construction corridor have been removed from scenery.
- Outback data is confirmed using information from the Government of BC websites for Forest Map/View and MapBC.
- This pipeline section is not within the Agricultural Land Reserve.
- Field Survey Completed December 15, 2014
- This plan represents the best information available at the time of survey. WSP Surveys and its employees take no responsibility for the location of any underground conduits, pipes, or other facilities whether shown on or omitted from this plan. All underground installations should be located by the respective authorities prior to construction.

LEGEND
Proposed Pipeline R/W shown thus:
Proposed Temp. Workspaces shown thus:
Proposed Log Decks & Storage Sites shown thus:
Right of Way shown thus:
Roads shown thus:
Highway shown thus:
Railway line shown thus:
Seismic line/trail shown thus:
Recreation Tenure shown thus:
Drainages shown thus:
Buried cable shown thus:
Buried pipe shown thus:
Overhead powerline shown thus:
Fault Line shown thus:
Riparian Reserve Zone shown thus:
Riparian Management Zone shown thus:
Forest Cover Reserve shown thus:
Archaeological site shown thus:
Agricultural Land Reserve bdy shown thus:
Coal Tenure bdy shown thus:
Outback bdy shown thus:
Fence bdy shown thus:
Fish/Wildlife Reserve bdy shown thus:
Grazing Tenure bdy shown thus:
Mineral Claim bdy shown thus:
Tree Farm Licence shown thus:
Quarry Reserve bdy shown thus:
Ungulate Winter Range bdy shown thus:
Visual Land Inventory shown thus:
Watershed Reserve bdy shown thus:
Wind Tenure bdy shown thus:
Woodlot bdy shown thus:
Misc. Reserve/Notation bdy shown thus:
Misc. Licence/Permit bdy shown thus:
Stantec Wetland / Classification shown thus:
Crossings shown thus:
Old Growth Management Area shown thus:
Residences shown thus:
Indian Reserve shown thus:



APPROVED BY
PROJECT ENGINEER

No.	STATION	DESCRIPTION	OWNER
W02839	(S4)506+174	Trib. to Itlitz Creek / S3 / RRZ = 20 RMZ = 20	ILMB
T01054	(S4)505+271	Forestry Road / LGGR / R06942 2	Stella-Jones Canada Inc.
W03009	(S4)504+778	Trib. to Itlitz Creek / S6 / RRZ = 0 RMZ = 20	ILMB
W03010	(S4)504+249	Trib. to Itlitz Creek / S6 / RRZ = 0 RMZ = 20	ILMB
W03011	(S4)504+026	Trib. to Itlitz Creek / S6 / RRZ = 0 RMZ = 20	ILMB
W02841	(S4)503+881	Trib. to Itlitz Creek / S6 / RRZ = 0 RMZ = 20	ILMB
T01055	(S4)503+813	Forestry Road / LGGR / R06942 14	Stella-Jones Canada Inc.
W02818	(S4)502+551	Trib. to Itlitz Creek / S5 / RRZ = 0 RMZ = 30	ILMB
T01010	(S4)502+329	Forestry Road / LGGR / R06942 16	Stella-Jones Canada Inc.
No.	STATION	DESCRIPTION	NAD 83 UTM ZONE 9

Prince Rupert
Gas Transmission Project

PRINCE RUPERT GAS TRANSMISSION LTD.

PROPOSED VARIABLE WIDTH (32 to 41m) PIPELINE R/W FROM
a-68-D TO a-69-D, 93-M-8 (S1), a-69-D, 93-M-8 TO d-9-G, 93-M-7
(S2 & S3) & FROM d-9-G, 93-M-7 TO d-59-I, 93-M-5 (S4)
(SHEET CHAINAGE: 502+212 TO 506+185)

Unsurveyed Crown Land/Crown Land/Private Land/Indian Reserve Lands, Cassiar District

BCGS: 93M.027, 028, 033, 034, 035, 036, 037, 038, 042, 043

The intended plot size of this plan is 864mm in width by 560mm in height when plotted at a scale of 1: 5000 (use D size sheet)

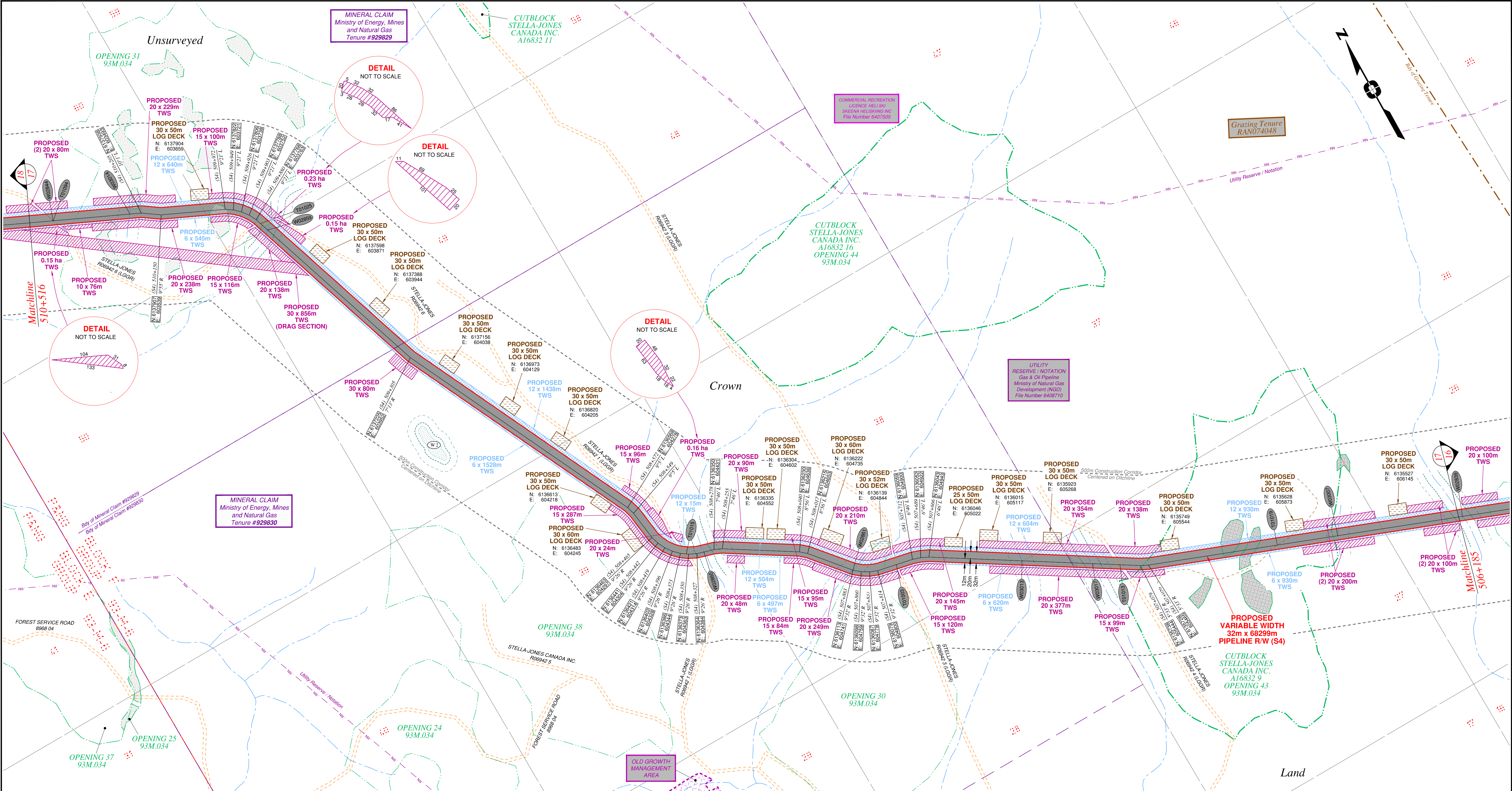
Sheet 16 of 27

11/5/2015 11:40:12 AM

WSP Surveys (BC)
Limited Partnership
Fort St John BC
(250) 787-0300

WSP: 130275CP04R1
AFE: 5005948
TCPL: 004776-09-ML-03-129
ePASS: 10050544

REV. 1

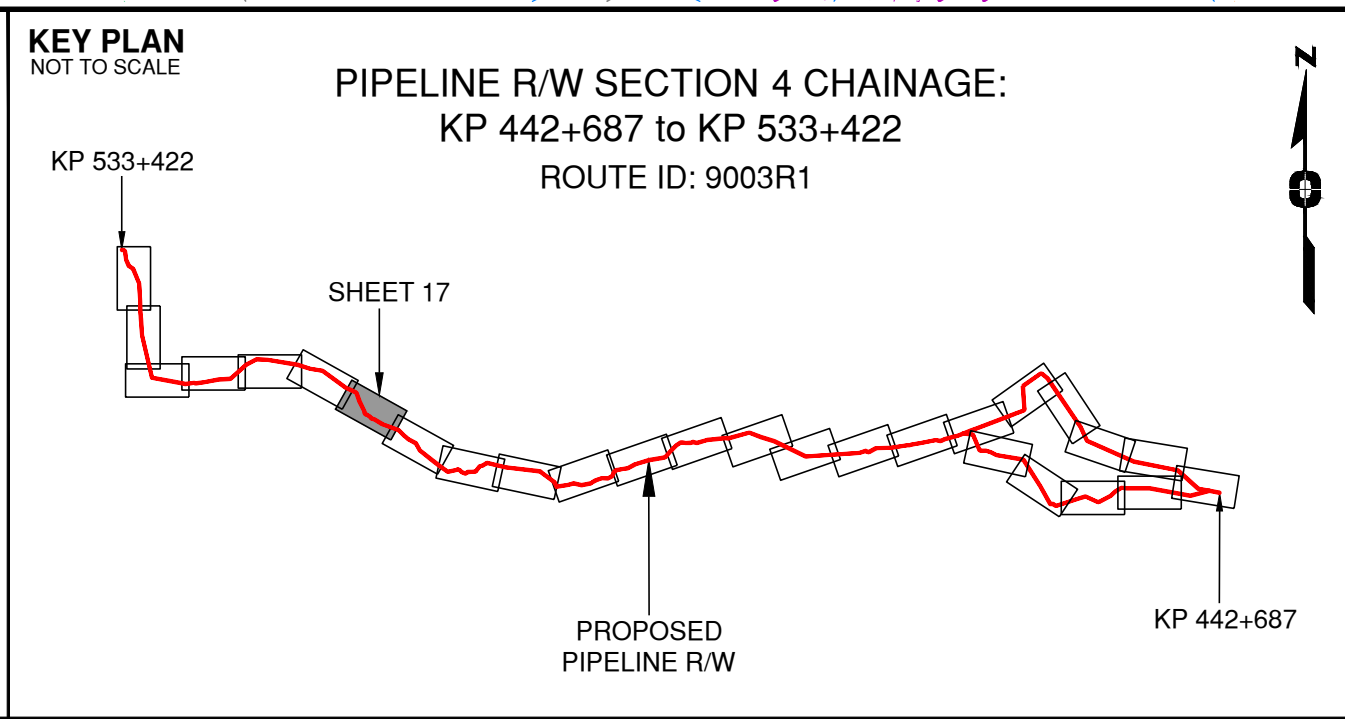


Rev	Revision Description	Date(Y/M/D)	By
0	Original Plan Prepared	2014/09/17	DC
1	Add P/L R/W (S3), Babine Lake - KP 443+346 to 462+675 Update P/L R/W (S2), Nilotkwa Lake - KP 458+764 to 463+877 Update Construction Corridor, Area Table, Tenures & Scenery	2015/01/15	DC

NOTES:

- Co-ordinates are NAD 83 Grid, UTM Zone 9 and Zone 10. Distances shown are in metres and decimals thereof. Chainages are two-dimensional and are on pipeline ditchline. Pipeline segment length derived from ditchline chainages.
- Fault Lines data has been provided from BGC Engineering Inc. Desktop Study dated December 20, 2013.
- Water crossing information has been provided by Stantec. Wetlands data has been provided by Stantec dated August 29, 2014. Freshwater Atlas wetlands outside of construction corridor have been removed from scenery.
- Cutblock data is confirmed using information from the Government of BC websites for Forest MapView and MapBC.
- This pipeline section is not within the Agricultural Land Reserve.
- Field Survey Completed December 15, 2014
- This plan represents the best information available at the time of survey. WSP Surveys and its employees take no responsibility for the location of any underground conduits, pipes, or other facilities whether shown on or omitted from this plan. All underground installations should be located by the respective authorities prior to construction.

LEGEND
Proposed Pipeline R/W shown thus:
Proposed Temp. Workspaces shown thus:
Proposed Log Decks & Storage Sites shown thus:
Right of Way shown thus:
Roads shown thus:
Highway shown thus:
Railway line shown thus:
Seismic line/trail shown thus:
Recreation Tenure shown thus:
Drainages shown thus:
Buried pipe shown thus:
Overhead powerline shown thus:
Fault Line shown thus:
Misc. Reserve/Notation bdy shown thus:
Misc. Licence/Permit bdy shown thus:
Stantec Wetland / Classification shown thus:
Crossings shown thus:
Cutblock bdy shown thus:
Archaeological site shown thus:
Agricultural Land Reserve bdy shown thus:
Coal Tenure bdy shown thus:
Cutblock bdy shown thus:
Fence bdy shown thus:
Fish/Wildlife Reserve bdy shown thus:
Grazing Tenure bdy shown thus:
Mineral Claim bdy shown thus:
Tree Farm Licence shown thus:
Quarry Reserve bdy shown thus:
Ungulate Winter Range bdy shown thus:
Visual Land Inventory shown thus:
Watershed Reserve bdy shown thus:
Woodlot bdy shown thus:
Wind Tenure bdy shown thus:
Woodlot bdy shown thus:
Indian Reserve shown thus:



APPROVED BY
PROJECT ENGINEER

STATION	DESCRIPTION	OWNER
W02844	(S4)510+451 Trib. to Shegunia River / Non-classified drainage	N 6138038 E 603269
T01094	(S4)510+451 Forestry Road / LGGR / R06942 6	N 6138038 E 603269
W03014	(S4)510+237 Trib. to Shegunia River / S4 / RRZ = 0 RMZ = 30	N 6137951 E 603465
T01025	(S4)509+864 Forestry Road / LGGR / R06942 6	N 6137753 E 603768
W02859	(S4)509+836 Trib. to Shegunia River / S3 / RRZ = 20 RMZ = 20	N 6137727 E 603777
T01015	(S4)508+356 Forestry Road / LGGR / R06942 1	N 6136377 E 604358
W02860	(S4)508+307 Trib. to Itlitz Creek / S3 / RRZ = 20 RMZ = 20	N 6136386 E 604403
W02861	(S4)507+894 Trib. to Itlitz Creek / S4 / RRZ = 0 RMZ = 30	N 6136114 E 604741
T01003	(S4)507+760 Forestry Road / LGGR / R06942 3	N 6136068 E 604854
W03013	(S4)507+408 Trib. to Itlitz Creek / S4 / RRZ = 0 RMZ = 30	N 6135908 E 605164
W03017	(S4)507+212 Trib. to Itlitz Creek / S3 / RRZ = 20 RMZ = 20	N 6135807 E 605331
T01013	(S4)507+135 Forestry Road / LGGR / R06942 4	N 6135767 E 605397
T01019	(S4)506+694 Trail / Condition Unknown	N 6135603 E 605805
W03007	(S4)506+524 Trib. to Itlitz Creek / S4 / RRZ = 0 RMZ = 30	N 6135544 E 605965
No.	STATION	DESCRIPTION

Prince Rupert
Gas Transmission Project

TransCanada
In business to deliver

PRINCE RUPERT GAS TRANSMISSION LTD.

PROPOSED VARIABLE WIDTH (32 to 41m) PIPELINE R/W FROM
a-68-D TO a-69-D, 93-M-8 (S1), a-69-D, 93-M-8 TO d-9-G, 93-M-7
(S2 & S3) & FROM d-9-G, 93-M-7 TO d-59-I, 93-M-5 (S4)
(SHEET CHAINAGE: 506+185 TO 510+516)

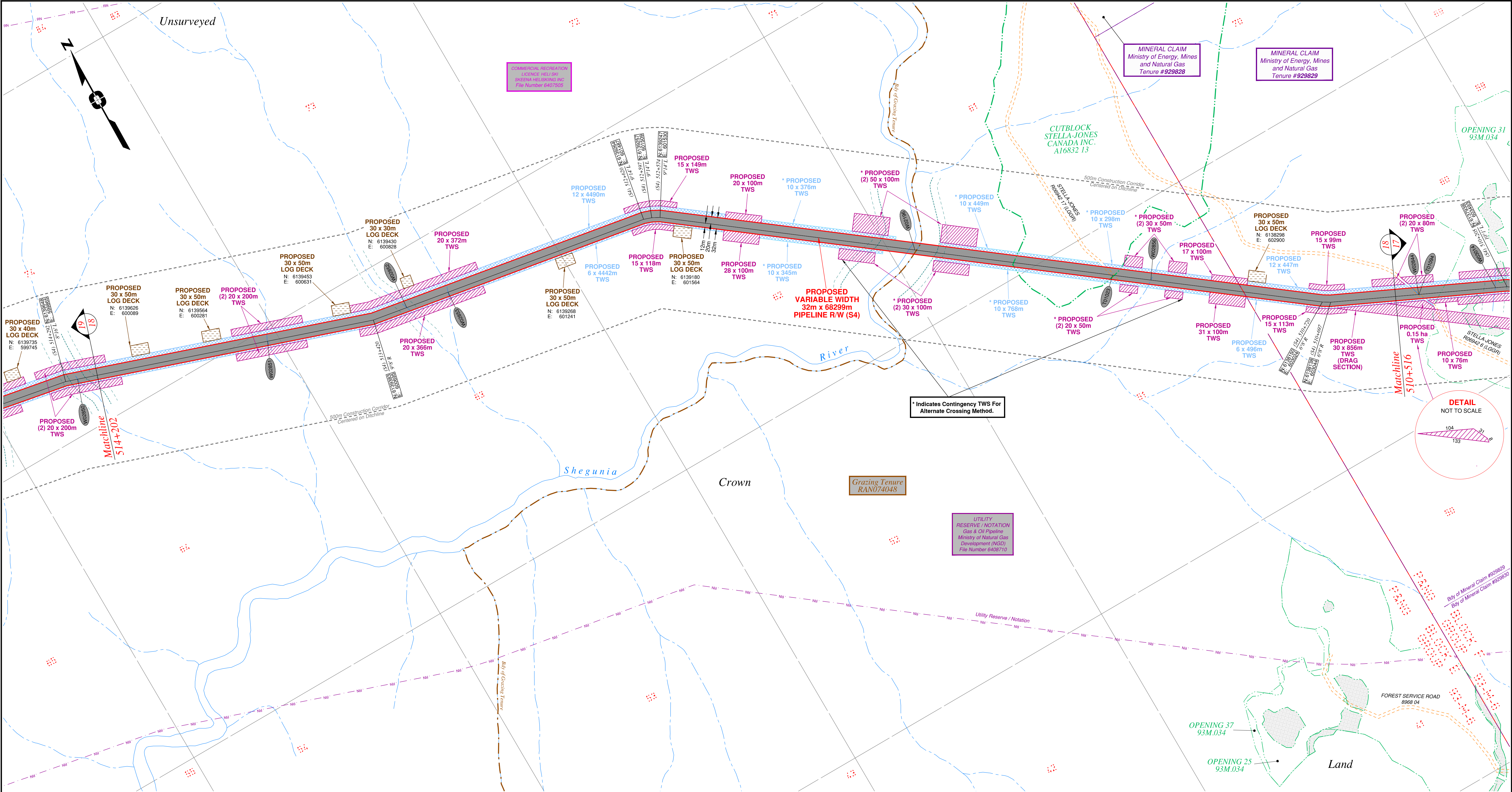
Unsurveyed Crown Land/Crown Land/Private Land/Indian Reserve Lands, Cassiar District

BCGS: 93M.027, 028, 033, 034, 035, 036, 037, 038, 042, 043

The intended plot size of this plan is 864mm in width by 560mm in height when plotted at a scale of 1: 5000 (use D size sheet)

Sheet 17 of 27

WSP Surveys (BC) WSP: 130275CP04R1
Fort St John BC Limited Partnership 5005948
(250) 787-0300 TCPL: 004776-09-ML-03-130
ePASS: 10050544

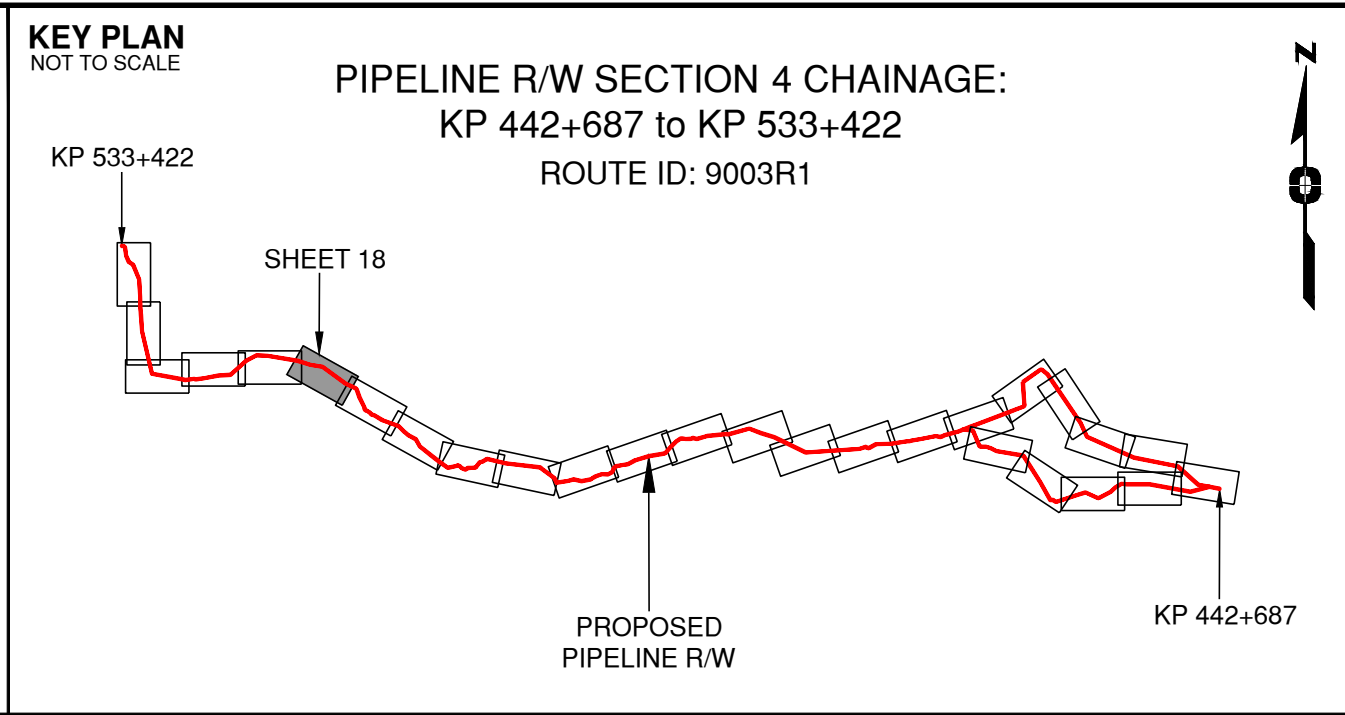


Rev	Revision Description	Date(Y/M/D)	By
0	Original Plan Prepared	2014/09/17	DC
1	Add P/L R/W (S3), Babine Lake - KP 443+346 to 462+675 Update P/L R/W (S2), Nilotkwa Lake - KP 458+764 to 463+877 Update Construction Corridor, Area Table, Tenures & Scenery	2015/01/15	DC

NOTES:

- Co-ordinates are NAD 83 Grid. UTM Zone 9 and Zone 10. Distances shown are in metres and decimals thereof. Chainages are two-dimensional and are on pipeline ditchline. Pipeline segment length derived from ditchline chainages.
- Fault Lines data has been provided from BGC Engineering Inc. Desktop Study dated December 20, 2013.
- Water crossing information has been provided by Stantec. Wetlands data has been provided by Stantec dated August 29, 2014. Freshwater Atlas wetlands outside of construction corridor have been removed from scenery.
- Outback data is confirmed using information from the Government of BC websites for Forest MapView and MapBC.
- This pipeline section is not within the Agricultural Land Reserve.
- Field Survey Completed December 15, 2014
- This plan represents the best information available at the time of survey. WSP Surveys and its employees take no responsibility for the location of any underground conduits, pipes, or other facilities whether shown on or omitted from this plan. All underground installations should be located by the respective authorities prior to construction.

LEGEND
Proposed Pipeline R/W shown thus:
Proposed Temp. Workspaces shown thus:
Proposed Log Decks & Storage Sites shown thus:
Right of Way shown thus:
Roads shown thus:
Highway shown thus:
Railway line shown thus:
Seismic line/trail shown thus:
Drainages shown thus:
Buried cable shown thus:
Buried pipe shown thus:
Overhead powerline shown thus:
Fault Line shown thus:
Riparian Reserve Zone shown thus:
Forest Cover Reserve shown thus:
Archaeological site shown thus:
Agricultural Land Reserve bdy shown thus:
Coal Tenure bdy shown thus:
Outback bdy shown thus:
Fence bdy shown thus:
Fish/Wildlife Reserve bdy shown thus:
Grazing Tenure bdy shown thus:
Mineral Claim bdy shown thus:
Tree Farm Licence shown thus:
Quarry Reserve bdy shown thus:
Ungulate Winter Range bdy shown thus:
Visual Land Inventory shown thus:
Watershed Reserve bdy shown thus:
Wind Tenure bdy shown thus:
Woodlot bdy shown thus:
Misc. Reserve/Notation bdy shown thus:
Misc. Licence/Permit bdy shown thus:
Stantec Wetland / Classification shown thus:
Crossings shown thus:
Old Growth Management Area shown thus:
Residences shown thus:
Indian Reserve shown thus:



APPROVED BY _____

PROJECT ENGINEER _____

No.	STATION	DESCRIPTION	WSP	AFE	TCPL	ePASS
W02851	(S4)513+720	Trib. to Shegunia River / Non-classified drainage	N 6139474 E 600410	ILMB		
W02852	(S4)513+322	Trib. to Shegunia River / S6 / R/RZ = 0	N 6139368 E 600793	ILMB		
W02853	(S4)513+199	Trib. to Shegunia River / Non-classified drainage	N 6139350 E 600914	ILMB		
W02196	(S4)511+860	Shegunia River / S1 / R/RZ = 50	N 6138824 E 602105	ILMB		
T01023	(S4)511+307	Forestry Road / LGGR / R06942 17	N 6138497 E 602551	Stella-Jones Canada Inc.		
W02856	(S4)511+200	Trib. to Shegunia River / Non-classified drainage	N 6138434 E 602637	ILMB		
No.	STATION	DESCRIPTION	NAD 83 UTM ZONE	9	OWNER	

TABLE OF CROSSINGS

Prince Rupert Gas Transmission Project

PRINCE RUPERT GAS TRANSMISSION LTD.

PROPOSED VARIABLE WIDTH (32 to 41m) PIPELINE R/W FROM a-68-D TO a-69-D, 93-M-8 (S1), a-69-D, 93-M-8 TO d-9-G, 93-M-7 (S2 & S3) & FROM d-9-G, 93-M-7 TO d-59-I, 93-M-5 (S4) (SHEET CHAINAGE: 510+516 TO 514+202)

Unsurveyed Crown Land/Crown Land/Private Land/Indian Reserve Lands, Cassiar District

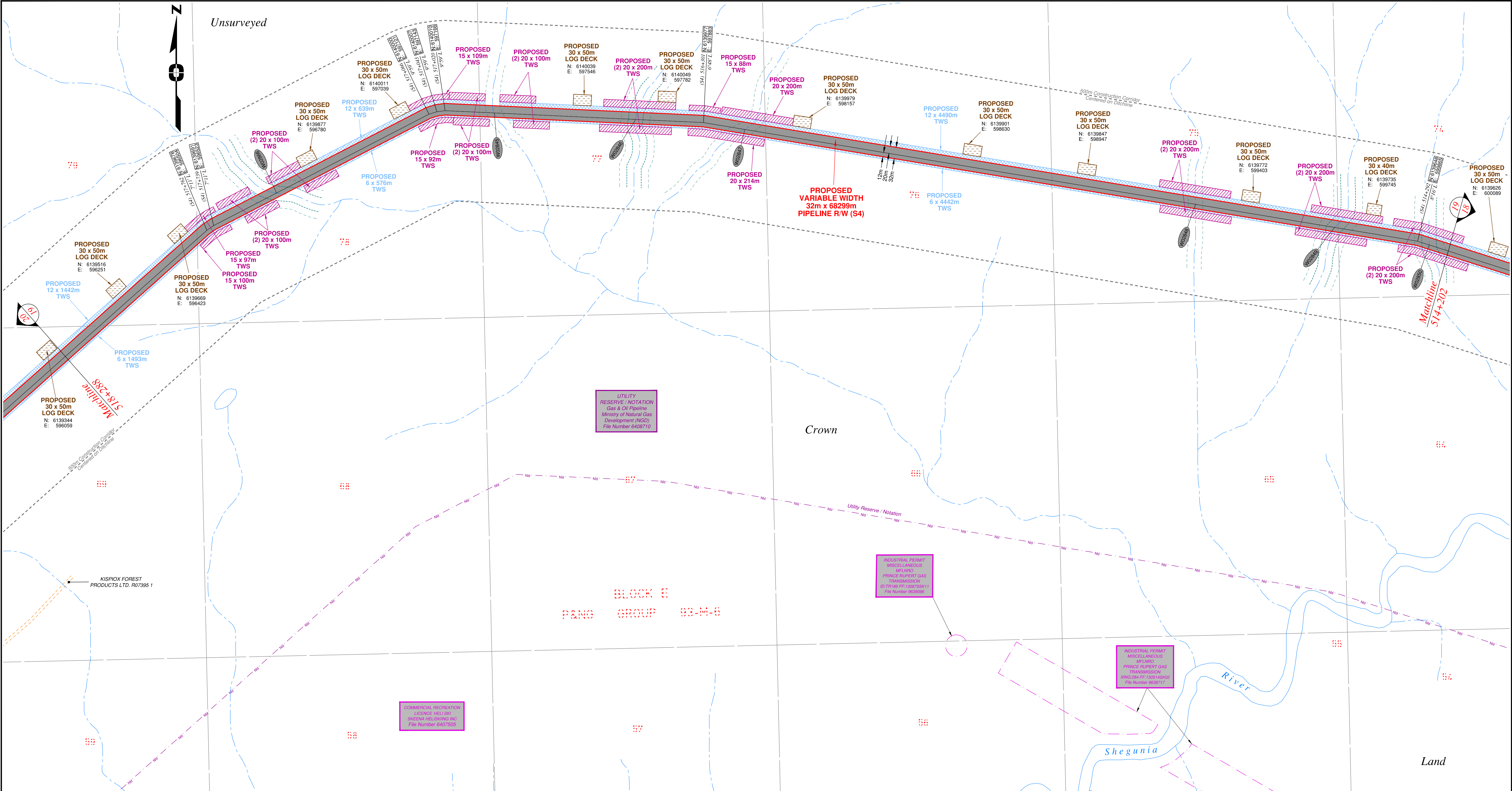
BCGS: 93M.027, 028, 033, 034, 035, 036, 037, 038, 042, 043

The intended plot size of this plan is 864mm in width by 560mm in height when plotted at a scale of 1: 5000 (use D size sheet)

WSP: 130275CP04R1
AF: 5005948
TCPL: 004776-09-ML-03-131
ePASS: 10050544

Sheet 18 of 27

REV. 1

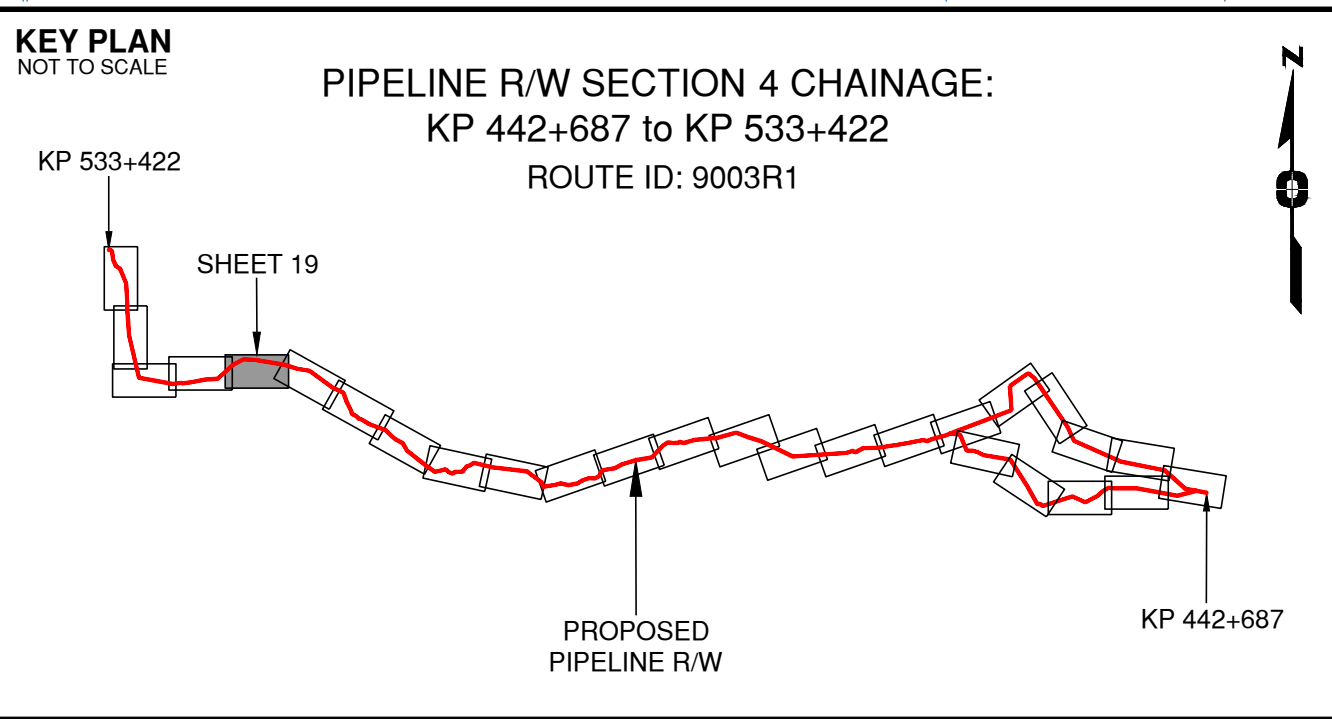


Rev	Revision Description	Date(Y/M/D)	By
0	Original Plan Prepared	2014/09/17	DC
1	Add P/L R/W (S3), Babine Lake - KP 443+346 to 462+675 Update P/L R/W (S2), Nilikitwa Lake - KP 458+764 to 463+877 Update Construction Corridor, Area Table, Tenures & Scenery	2015/01/15	DC

NOTES:

- Co-ordinates are NAD 83 Grid, UTM Zone 9 and Zone 10. Distances shown are in metres and decimals thereof. Chainages are two-dimensional and are on pipeline ditchline. Pipeline segment length derived from ditchline chainages.
- Fault Lines data has been provided from BGC Engineering Inc. Desktop Study dated December 20, 2013.
- Water crossing information has been provided by Stantec. Wetlands data has been provided by Stantec dated August 29, 2014. Freshwater Atlas wetlands outside of construction corridor have been removed from scenery.
- Cutback data is confirmed using information from the Government of BC websites for Forest Map/View and MapBC.
- This pipeline section is not within the Agricultural Land Reserve.
- Field Survey Completed December 15, 2014
- This plan represents the best information available at the time of survey. WSP Surveys and its employees take no responsibility for the location of any underground conduits, pipes, or other facilities whether shown on or omitted from this plan. All underground installations should be located by the respective authorities prior to construction.

LEGEND
Proposed Pipeline R/W shown thus:
Proposed Temp. Workspaces shown thus:
Proposed Log Decks & Storage Sites shown thus:
Right of Way shown thus:
Roads shown thus:
Highway shown thus:
Railway line shown thus:
Seismic line/trail shown thus:
Recreation Tenure shown thus:
Drainages shown thus:
Buried cable shown thus:
Buried pipe shown thus:
Overhead powerline shown thus:
Fault Line shown thus:
Riparian Reserve Zone shown thus:
Forest Cover Reserve shown thus:
Archaeological site shown thus:
Agricultural Land Reserve bdy shown thus:
Coal Tenure bdy shown thus:
Cutback bdy shown thus:
Fence bdy shown thus:
Fish/Wildlife Reserve bdy shown thus:
Grazing Tenure bdy shown thus:
Mineral Claim bdy shown thus:
Tree Farm Licence shown thus:
Quarry Reserve bdy shown thus:
Ungulate Winter Range bdy shown thus:
Visual Land Inventory shown thus:
Watershed Reserve bdy shown thus:
Wind Tenure bdy shown thus:
Woodlot bdy shown thus:
Misc. Reserve/Notation bdy shown thus:
Misc. Licence/Permit bdy shown thus:
Stantec Wetland / Classification shown thus:
Crossings shown thus:
Old Growth Management Area shown thus:
Residences shown thus:
Indian Reserve shown thus:



APPROVED BY
PROJECT ENGINEER

STATION	DESCRIPTION	TABLE OF CROSSINGS
W02866	(S4)517+542 Trib. to Shegunia River / S3 / RRZ = 20 RMZ = 20	N 6139782 E 596698 ILMB
W02845	(S4)516+883 Trib. to Shegunia River / S6 / RRZ = 0 RMZ = 20	N 6140004 E 597302 ILMB
W02846	(S4)516+490 Trib. to Shegunia River / S3 / RRZ = 20 RMZ = 20	N 6139986 E 597695 ILMB
W02847	(S4)516+185 Trib. to Shegunia River / S6 / RRZ = 0 RMZ = 20	N 6139958 E 597998 ILMB
W02848	(S4)514+917 Trib. to Shegunia River / S6 / RRZ = 0 RMZ = 20	N 6139750 E 599249 ILMB
W02849	(S4)514+525 Trib. to Shegunia River / S3 / RRZ = 20 RMZ = 20	N 6139686 E 599635 ILMB
W02850	(S4)514+258 Trib. to Shegunia River / S3 / RRZ = 20 RMZ = 20	N 6139638 E 599898 ILMB
No.	STATION	DESCRIPTION

PRINCE RUPERT GAS TRANSMISSION LTD.

PROPOSED VARIABLE WIDTH (32 to 41m) PIPELINE R/W FROM a-68-D TO a-69-D, 93-M-8 (S1), a-69-D, 93-M-8 TO d-9-G, 93-M-7 (S2 & S3) & FROM d-9-G, 93-M-7 TO d-59-I, 93-M-5 (S4) (SHEET CHAINAGE: 514+202 TO 518+288)

Unsurveyed Crown Land/Crown Land/Private Land/Indian Reserve Lands, Cassiar District

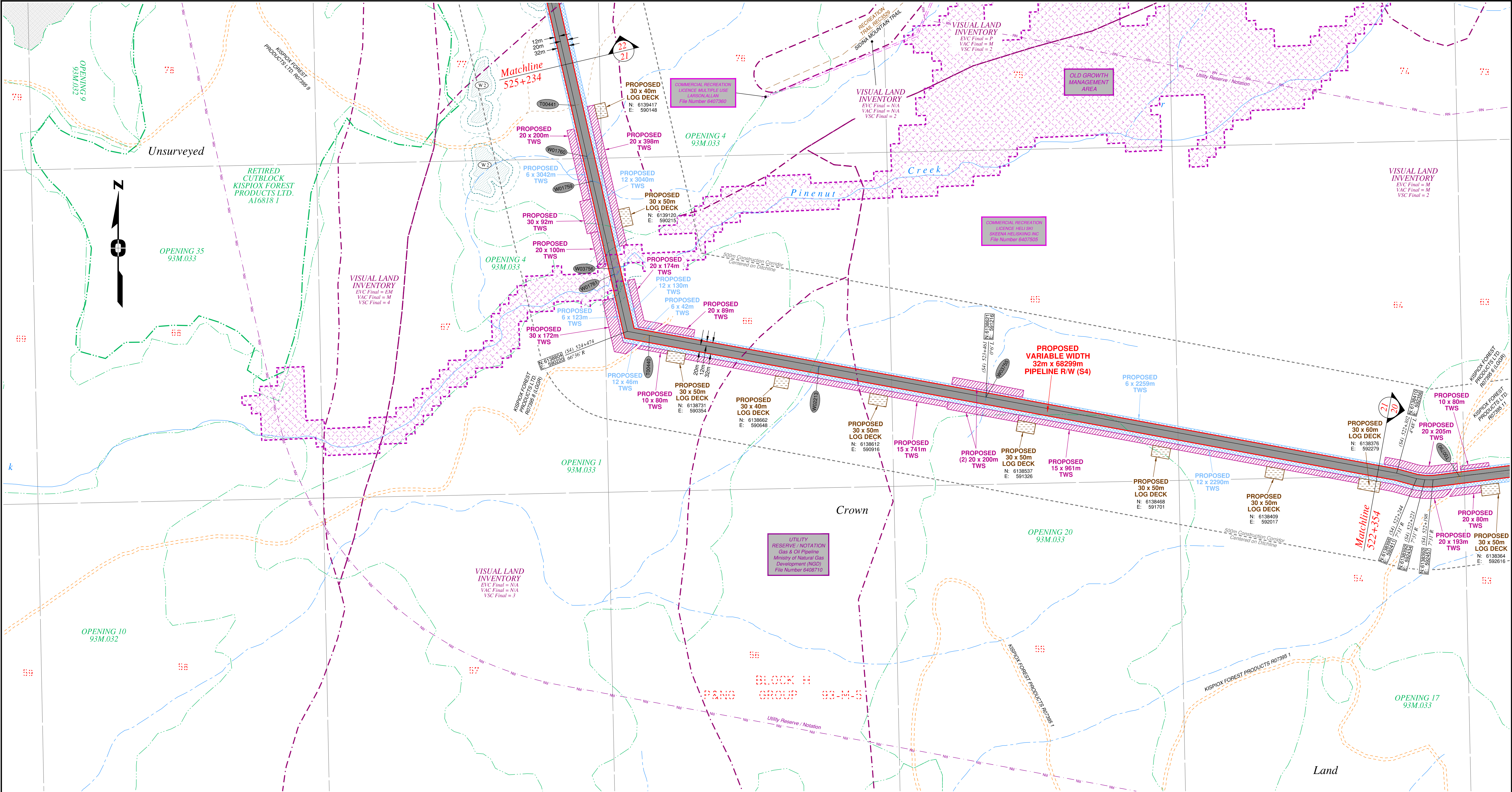
The intended plot size of this plan is 864mm in width by 560mm in height when plotted at a scale of 1: 5000 (use D size sheet)

WSP Surveys (BC) Limited Partnership
Fort St John BC
(250) 787-0300

WSP: 130275CP04R1
AFE: 5005948
TCPL: 004776-09-ML-03-132
ePASS: 10050544

Sheet 19 of 27

REV. 1

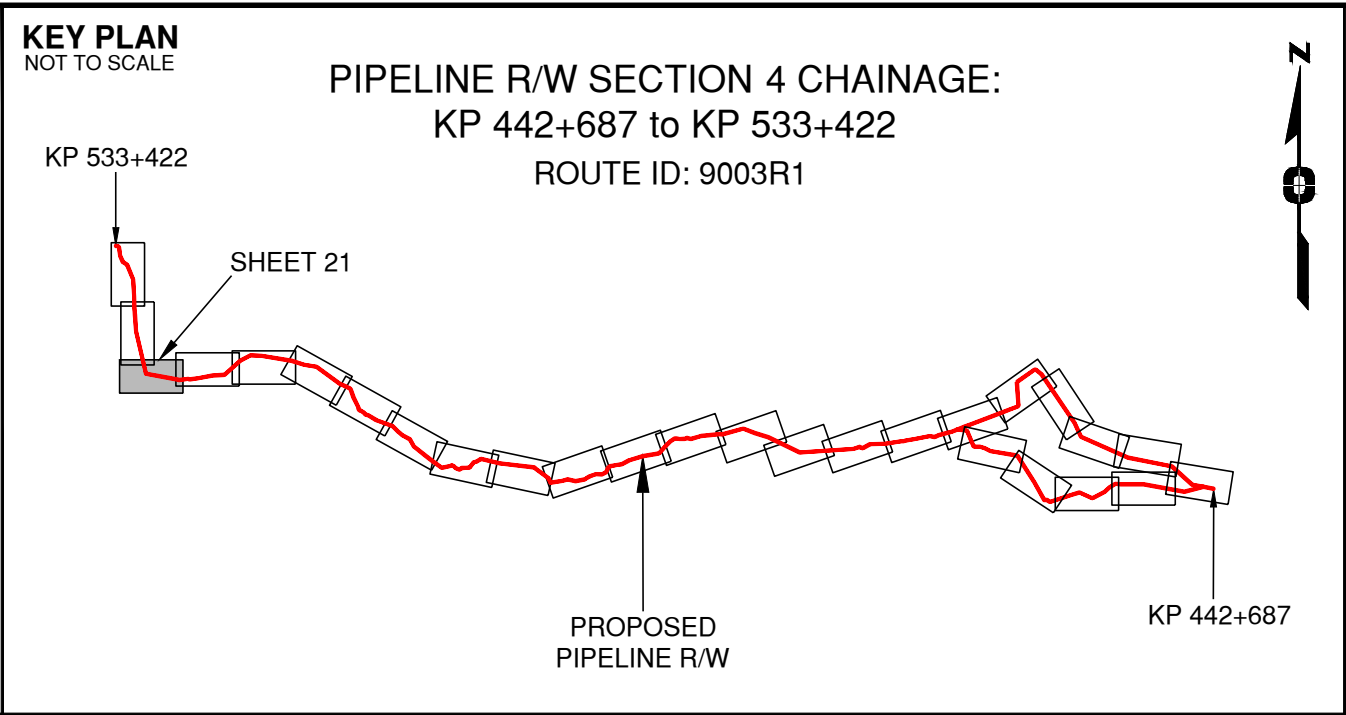


Rev	Revision Description	Date(Y/M/D)	By
0	Original Plan Prepared	2014/09/17	DC
1	Add P/L R/W (S3), Babine Lake - KP 443+346 to 462+675 Update P/L R/W (S2), Nilotkwa Lake - KP 458+764 to 463+877 Update Construction Corridor, Area Table, Tenures & Scenery	2015/01/15	DC

NOTES:

- Co-ordinates are NAD 83 Grid. UTM Zone 9 and Zone 10. Distances shown are in metres and decimals thereof. Chainages are two-dimensional and are on pipeline ditchline. Pipeline segment length derived from ditchline chainages.
- Fault Lines data has been provided from BGC Engineering Inc. Desktop Study dated December 20, 2013.
- Water crossing information has been provided by Stantec. Wetlands data has been provided by Stantec dated August 29, 2014. Freshwater Atlas wetlands outside of construction corridor have been removed from scenery.
- Outblock data is confirmed using information from the Government of BC websites for Forest MapView and MapBC.
- This pipeline section is not within the Agricultural Land Reserve.
- Field Survey Completed December 15, 2014
- This plan represents the best information available at the time of survey. WSP Surveys and its employees take no responsibility for the location of any underground conduits, pipes, or other facilities whether shown on or omitted from this plan. All underground installations should be located by the respective authorities prior to construction.

LEGEND
Proposed Pipeline R/W shown thus:
Proposed Temp. Workspaces shown thus:
Proposed Log Decks & Storage Sites shown thus:
Right of Way shown thus:
Roads shown thus:
Highway shown thus:
Railway line shown thus:
Seismic line/trail shown thus:
Drainages shown thus:
Buried cable shown thus:
Buried pipe shown thus:
Overhead powerline shown thus:
Fault Line shown thus:
Riparian Reserve Zone shown thus:
Forest Cover Reserve shown thus:
Archaeological site shown thus:
Agricultural Land Reserve bdy shown thus:
Coal Tenure bdy shown thus:
Outblock bdy shown thus:
Fence bdy shown thus:
Fish/Wildlife Reserve bdy shown thus:
Grazing Tenure bdy shown thus:
Mineral Claim bdy shown thus:
Tree Farm Licence shown thus:
Quarry Reserve bdy shown thus:
Ungulate Winter Range bdy shown thus:
Visual Land Inventory shown thus:
Watershed Reserve bdy shown thus:
Wind Tenure bdy shown thus:
Woodlot bdy shown thus:
Misc. Reserve/Notation bdy shown thus:
Misc. Licence/Permit bdy shown thus:
Stantec Wetland / Classification shown thus:
Crossings shown thus:
Old Growth Management Area shown thus:
Residences shown thus:
Indian Reserve shown thus:



APPROVED BY
PROJECT ENGINEER

STATION	DESCRIPTION	OWNER
T00441	(S4)525+110 Trail / Condition Unknown	Crown
W01760	(S4)524+972 Trib. to Pinenut Creek / Non-classified drainage	ILMB
W01759	(S4)524+902 Trib. to Pinenut Creek / No visible channel	ILMB
W03756	(S4)524+653 Trib. to Pinenut Creek / No visible channel	ILMB
W01761	(S4)524+637 Pinenut Creek / S2 / RRZ = 30 RMZ = 20	ILMB
T00440	(S4)524+412 Forestry Road / LGGR / R07395 6	Kispiox Forest Products Ltd.
W02213	(S4)523+933 Trib. to Pinenut Creek / No visible channel	ILMB
W03755	(S4)523+461 Trib. to Pinenut Creek / Non-classified drainage	ILMB
No.	STATION	DESCRIPTION

Prince Rupert Gas Transmission Project

PRINCE RUPERT GAS TRANSMISSION LTD.

PROPOSED VARIABLE WIDTH (32 to 41m) PIPELINE R/W FROM a-68-D TO a-69-D, 93-M-8 (S1), a-69-D, 93-M-8 TO d-9-G, 93-M-7 (S2 & S3) & FROM d-9-G, 93-M-7 TO d-59-I, 93-M-5 (S4) (SHEET CHAINAGE: 522+354 TO 525+234)

Unsurveyed Crown Land/Crown Land/Private Land/Indian Reserve Lands, Cassiar District

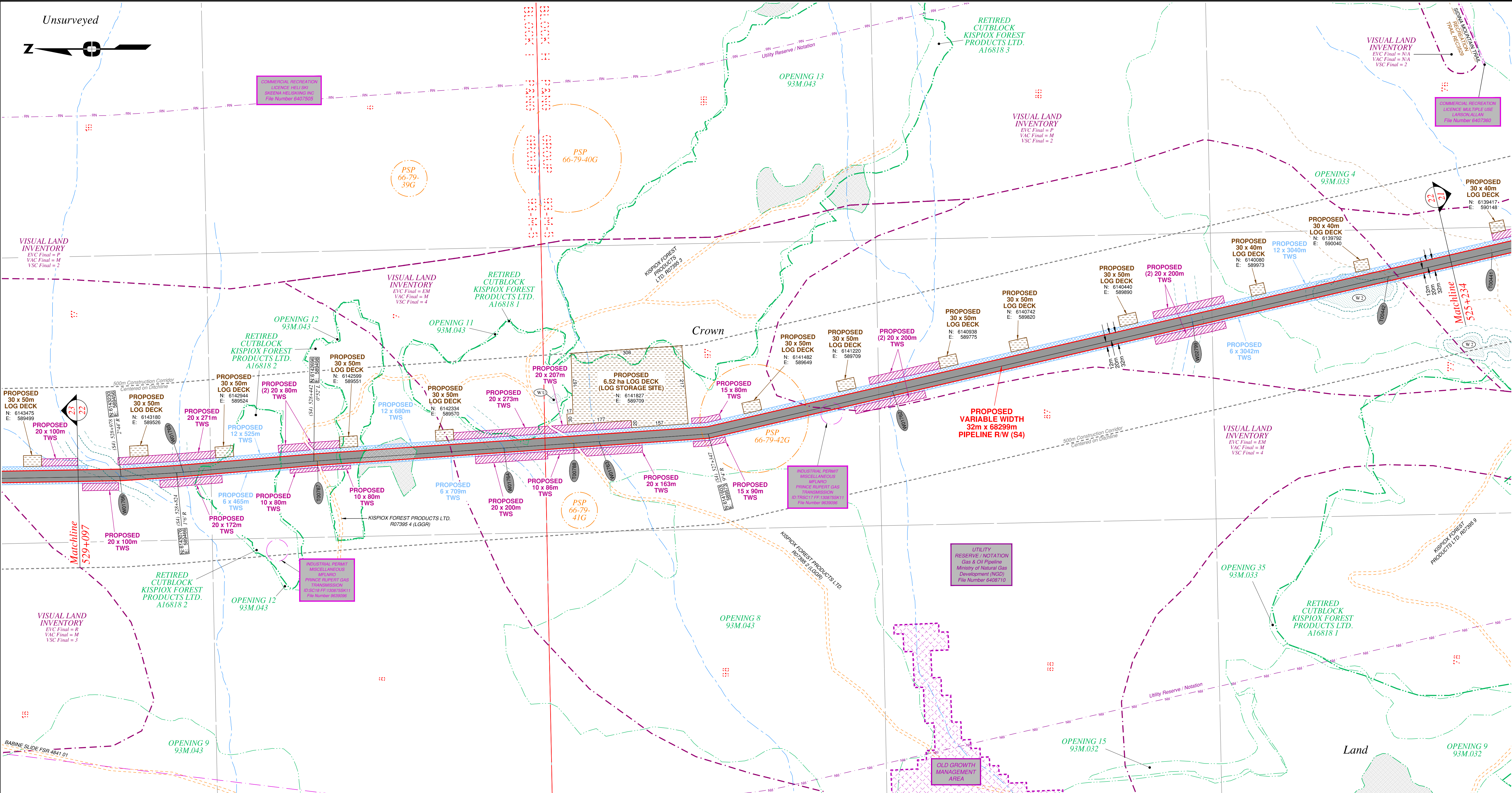
BCGS: 93M.027, 028, 033, 034, 035, 036, 037, 038, 042, 043

WSP Surveys (BC) Limited Partnership
Fort St John BC
(250) 787-0300

WSP: 130275CP04R1
AFE: 5005948
TCPL: 004776-09-ML-03-134
ePASS: 10050544

Sheet 21 of 27

REV. 1

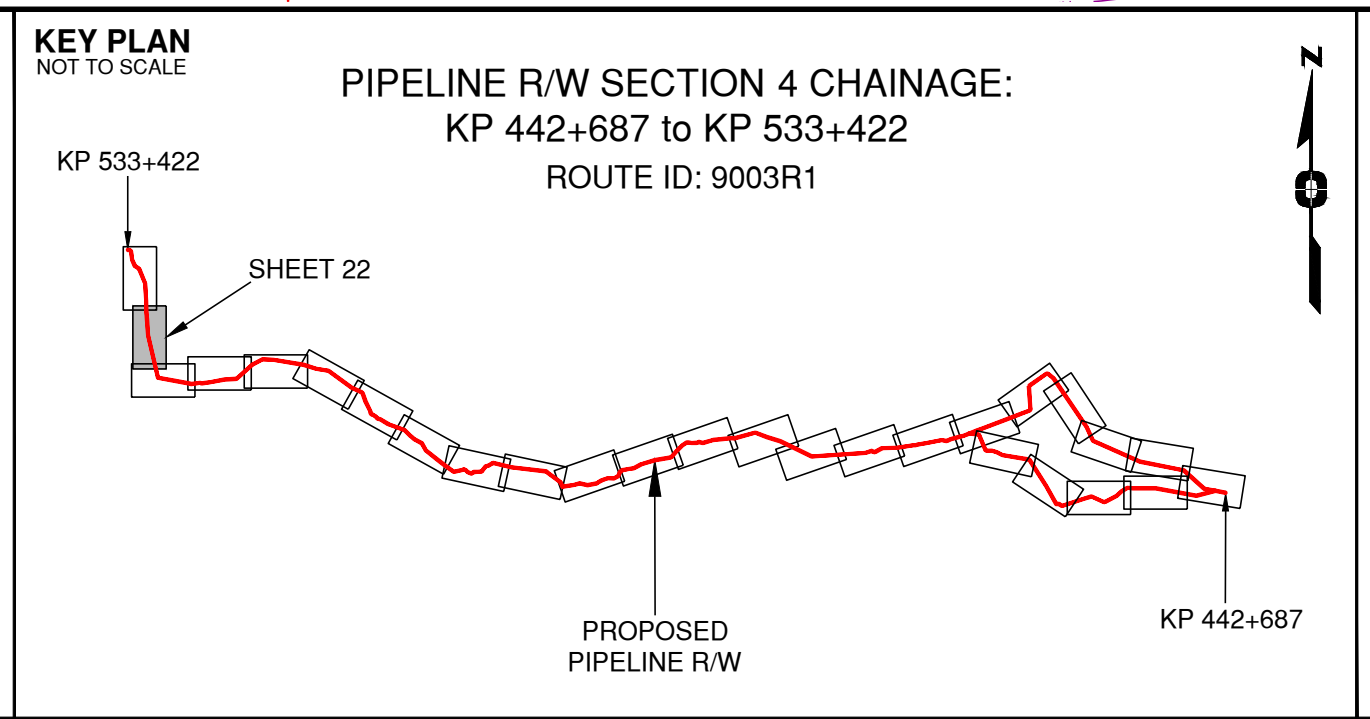


Rev	Revision Description	Date(Y/M/D)	By
0	Original Plan Prepared	2014/09/17	DC
1	Add P/L R/W (S3), Babine Lake - KP 443+346 to 462+675 Update P/L R/W (S2), Nilotkwa Lake - KP 458+764 to 463+877 Update Construction Corridor, Area Table, Tenures & Scenery	2015/01/15	DC

NOTES:

- Co-ordinates are NAD 83 Grid, UTM Zone 9 and Zone 10. Distances shown are in metres and decimals thereof. Chainages are two-dimensional and are on pipeline ditchline. Pipeline segment length derived from ditchline chainages.
- Fault Lines data has been provided from BGC Engineering Inc. Desktop Study dated December 20, 2013.
- Water crossing information has been provided by Stantec. Wetlands data has been provided by Stantec dated August 29, 2014. Freshwater Atlas wetlands outside of construction corridor have been removed from scenery.
- Cutblock data is confirmed using information from the Government of BC websites for Forest MapView and MapBC.
- This pipeline section is not within the Agricultural Land Reserve.
- Field Survey Completed December 15, 2014
- This plan represents the best information available at the time of survey. WSP Surveys and its employees take no responsibility for the location of any underground conduits, pipes, or other facilities whether shown on or omitted from this plan. All underground installations should be located by the respective authorities prior to construction.

LEGEND
Proposed Pipeline R/W shown thus:
Proposed Temp. Workspaces shown thus:
Proposed Log Decks & Storage Sites shown thus:
Right of Way shown thus:
Roads shown thus:
Highway shown thus:
Railway line shown thus:
Seismic line/trail shown thus:
Recreation Tenure shown thus:
Drainages shown thus:
Buried cable shown thus:
Overhead powerline shown thus:
Riparian Reserve Zone shown thus:
Riparian Management Zone shown thus:
Forest Cover Reserve shown thus:
Archaeological site shown thus:
Agricultural Land Reserve bdy shown thus:
Coal Tenure bdy shown thus:
Cutblock bdy shown thus:
Fence bdy shown thus:
Fish/Wildlife Reserve bdy shown thus:
Grazing Tenure bdy shown thus:
Mineral Claim bdy shown thus:
Tree Farm Licence shown thus:
Quarry Reserve bdy shown thus:
Ungulate Winter Range bdy shown thus:
Visual Land Inventory shown thus:
Watershed Reserve bdy shown thus:
Wind Tenure bdy shown thus:
Woodlot bdy shown thus:
Fault Line shown thus:
Misc. Reserve/Notation bdy shown thus:
Misc. Licence/Permit bdy shown thus:
Stantec Wetland / Classification shown thus:
Crossings shown thus:
Old Growth Management Area shown thus:
Residences shown thus:
Indian Reserve shown thus:



APPROVED BY _____

PROJECT ENGINEER _____

No.	STATION	DESCRIPTION	WSP Surveys (BC) Limited Partnership Fort St John BC (250) 787-0300	WSP: 130275CP04R1	AFC: 5005948	TCPL: 004776-09-ML-03-135	ePASS: 10050544
W01765	(S4)528+082	Trib. to Skeena River / S3 / RRZ = 20 RMZ = 20	N 6143234 E 589456	ILMB			
W01765	(S4)528+095	Trib. to Skeena River / S6 / RRZ = 0 RMZ = 20	N 6143057 E 589460	ILMB			
T00787	(S4)528+432	Forestry Road / LGGR / R07395 4	N 6142686 E 589469	ILMB			
W01764	(S4)527+915	Trib. to Skeena River / S4 / RRZ = 0 RMZ = 30	N 6142169 E 589534	ILMB			
T00788	(S4)527+720	Forestry Road / LGGR / R07395 2	N 6141975 E 589548	ILMB			
W01763	(S4)527+650	Trib. to Skeena River / Non-classified drainage	N 6141905 E 589553	ILMB			
W01762	(S4)526+822	Trib. to Skeena River / Non-classified drainage	N 6141092 E 589691	ILMB			
W02799	(S4)525+969	Trib. to Pinenut Creek / S4 / RRZ = 0 RMZ = 30	N 6140261 E 589884	ILMB			
T00442	(S4)525+413	Trail / Condition Unknown	N 6139718 E 590009	Crown			
No.	STATION	DESCRIPTION	NAD 83 UTM ZONE 9	OWNER			

TABLE OF CROSSINGS

Prince Rupert Gas Transmission Project

PRINCE RUPERT GAS TRANSMISSION LTD.

PROPOSED VARIABLE WIDTH (32 to 41m) PIPELINE R/W FROM a-68-D TO a-69-D, 93-M-8 (S1), a-69-D, 93-M-8 TO d-9-G, 93-M-7 (S2 & S3) & FROM d-9-G, 93-M-7 TO d-59-I, 93-M-5 (S4) (SHEET CHAINAGE: 525+234 TO 529+097)

Unsurveyed Crown Land/Crown Land/Private Land/Indian Reserve Lands, Cassiar District

BCGS: 93M.027, 028, 033, 034, 035, 036, 037, 038, 042, 043

The intended plot size of this plan is 864mm in width by 560mm in height when plotted at a scale of 1: 5000 (use D size sheet)

Sheet 22 of 27

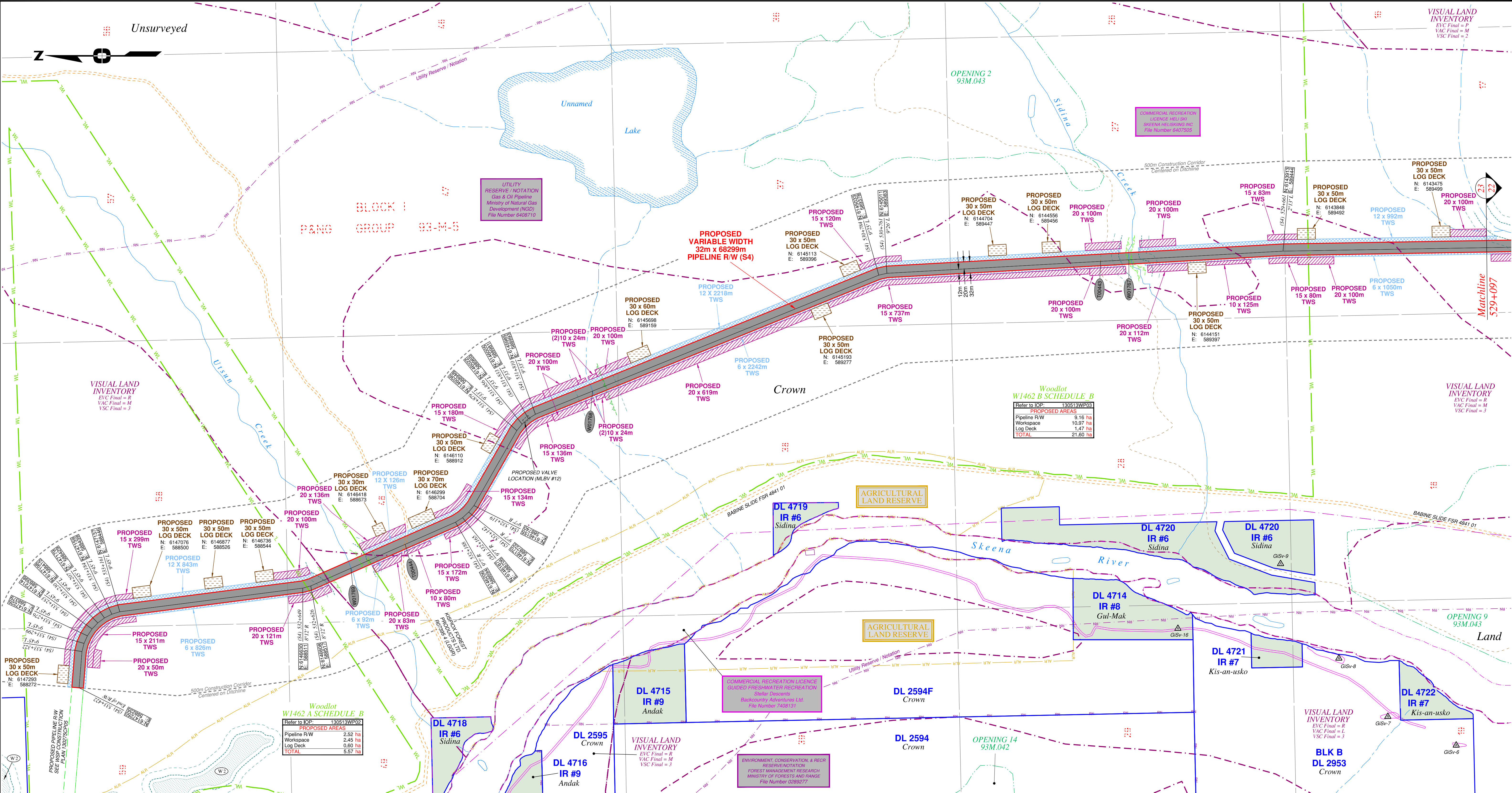
WSP: 130275CP04R1

AFC: 5005948

TCPL: 004776-09-ML-03-135

ePASS: 10050544

REV. 1

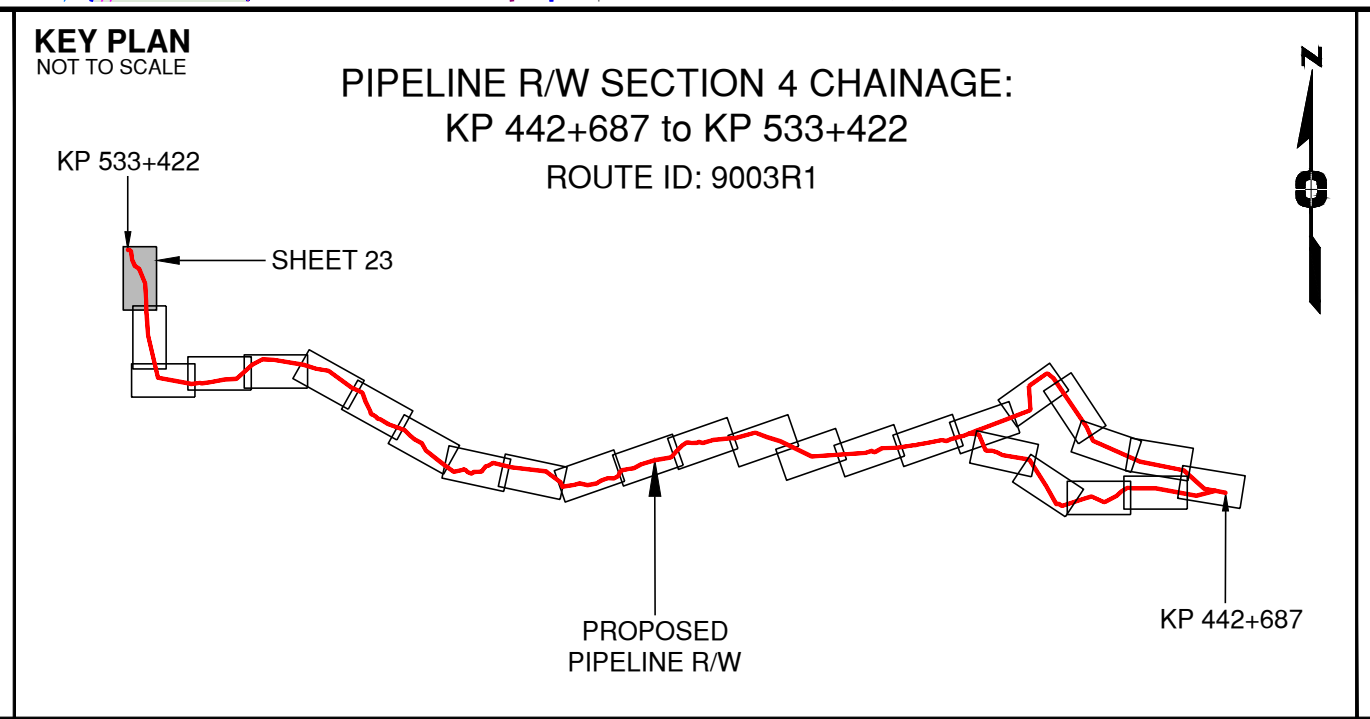


Rev	Revision Description	Date(Y/M/D)	By
0	Original Plan Prepared	2014/09/17	DC
1	Add P/L R/W (S3), Babine Lake - KP 443+346 to 462+675 Update P/L R/W (S2), Nilikitwa Lake - KP 458+764 to 463+877 Update Construction Corridor, Area Table, Tenures & Scenery	2015/01/15	DC

NOTES:

- Co-ordinates are NAD 83 Grid, UTM Zone 9 and Zone 10. Distances shown are in metres and decimals thereof. Chainages are two-dimensional and are on pipeline ditchline. Pipeline segment length derived from ditchline chainages.
- Fault Lines data has been provided from BGC Engineering Inc. Desktop Study dated December 20, 2013.
- Water crossing information has been provided by Stantec. Wetlands data has been provided by Stantec dated August 29, 2014. Freshwater Atlas wetlands outside of construction corridor have been removed from scenery.
- Cutback data is confirmed using information from the Government of BC websites for Forest MapView and MapBC.
- This pipeline section is not within the Agricultural Land Reserve.
- Field Survey Completed December 15, 2014
- This plan represents the best information available at the time of survey. WSP Surveys and its employees take no responsibility for the location of any underground conduits, pipes, or other facilities whether shown on or omitted from this plan. All underground installations should be located by the respective authorities prior to construction.

LEGEND
Proposed Pipeline R/W shown thus:
Proposed Temp. Workspaces shown thus:
Proposed Log Decks & Storage Sites shown thus:
Right of Way shown thus:
Roads shown thus:
Highway shown thus:
Railway line shown thus:
Seismic line/trail shown thus:
Recreation Tenure shown thus:
Drainages shown thus:
Buried cable shown thus:
Buried pipe shown thus:
Overhead powerline shown thus:
Riparian Reserve Zone shown thus:
Riparian Management Zone shown thus:
Forest Cover Reserve shown thus:
Archaeological site shown thus:
Agricultural Land Reserve bdy shown thus:
Coal Tenure bdy shown thus:
Cutback bdy shown thus:
Fence bdy shown thus:
Fish/Wildlife Reserve bdy shown thus:
Grazing Tenure bdy shown thus:
Mineral Claim bdy shown thus:
Tree Farm Licence shown thus:
Quarry Reserve bdy shown thus:
Ungulate Winter Range bdy shown thus:
Visual Land Inventory shown thus:
Watershed Reserve bdy shown thus:
Wind Tenure bdy shown thus:
Woodlot bdy shown thus:
Fault Line shown thus:
Misc. Reserve/Notation bdy shown thus:
Misc. Licence/Permit bdy shown thus:
Stantec Wetland / Classification shown thus:
Crossings shown thus:
Old Growth Management Area shown thus:
Residences shown thus:
Indian Reserve shown thus:



APPROVED BY _____

PROJECT ENGINEER _____

No.	STATION	DESCRIPTION	TABLE OF CROSSINGS
W01769	(S4)532+505 Ulsun Creek / S3 / RRZ = 20 RMZ = 20	N 6146496 E 588566	ILMB
T00444	(S4)532+341 Forestry Road / LGGR / R07395 4	N 6146346 E 588633	Kispiox Forest Products Ltd.
W01768	(S4)531+640 Trib. to Skeena River / S5 / RRZ = 0 RMZ = 30	N 6145827 E 589057	ILMB
T00443	(S4)530+168 Trail / Condition Unknown	N 6144419 E 589416	Crown
W01767	(S4)530+089 Sidina Creek / S3 / RRZ = 20 RMZ = 20	N 6144340 E 589420	ILMB
No.	STATION	DESCRIPTION	NAD 83 UTM ZONE 9 OWNER

Prince Rupert Gas Transmission Project

PRINCE RUPERT GAS TRANSMISSION LTD.

PROPOSED VARIABLE WIDTH (32 to 41m) PIPELINE R/W FROM a-68-D TO a-69-D, 93-M-8 (S1), a-69-D, 93-M-8 TO d-9-G, 93-M-7 (S2 & S3) & FROM d-9-G, 93-M-7 TO d-59-I, 93-M-5 (S4) (SHEET CHAINAGE: 529+097 TO 533+423)

Unsurveyed Crown Land/Crown Land/Private Land/Indian Reserve Lands, Cassiar District

The intended plot size of this plan is 864mm in width by 560mm in height when plotted at a scale of 1: 5000 (use D size sheet)

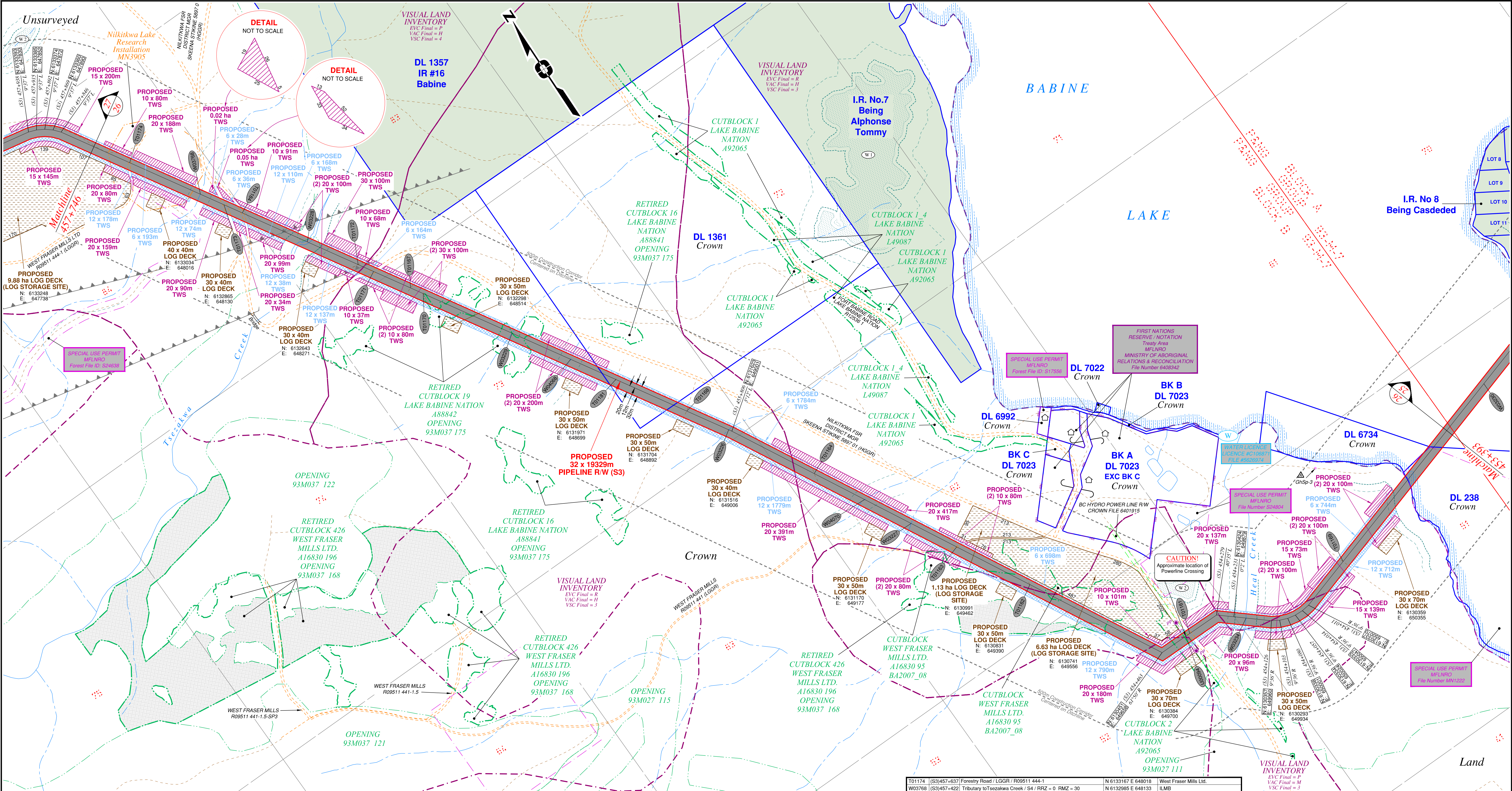
BCGS: 93M.027, 028, 033, 034, 035, 036, 037, 038, 042, 043

WSP Surveys (BC) Limited Partnership
Fort St John BC
(250) 787-0300

WSP: 130275CP04R1
AFE: 5005948
TCPL: 004776-09-ML-03-136
ePASS: 10050544

Sheet 23 of 27

REV. 1

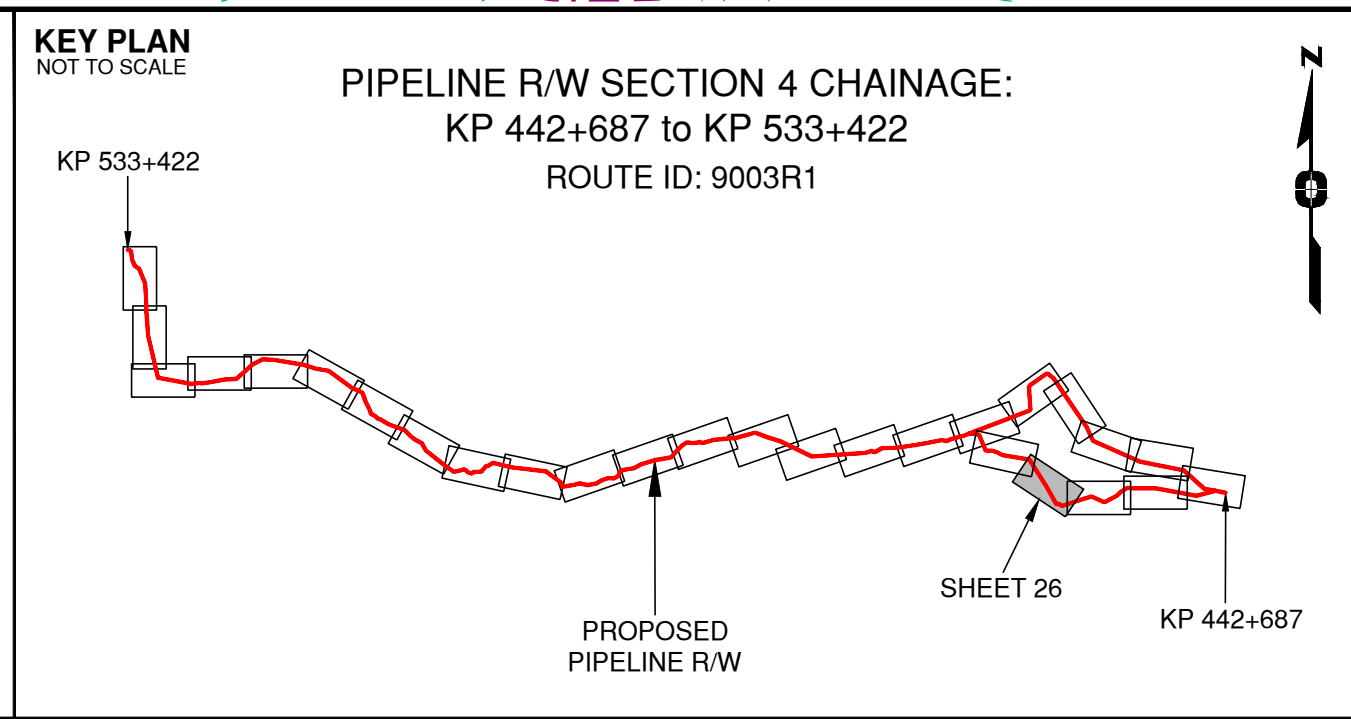


Rev	Revision Description	Date(Y/M/D)	By
0	Original Plan Prepared	2014/09/17	DC
1	Add P/L R/W (S3), Babine Lake - KP 443+346 to 462+675 Update P/L R/W (S2), Nikitkwa Lake - KP 458+764 to 463+877 Update Construction Corridor, Area Table, Tenures & Scenery	2015/01/15	DC

NOTES:

- Co-ordinates are NAD 83 Grid. UTM Zone 9 and Zone 10. Distances shown are in metres and decimals thereof. Chainages are two-dimensional and are on pipeline ditchline. Pipeline segment length derived from ditchline chainages.
- Fault Lines data has been provided from BGC Engineering Inc. Desktop Study dated December 20, 2013.
- Water crossing information has been provided by Stantec. Wetlands data has been provided by Stantec dated August 29, 2014. Freshwater Atlas wetlands outside of construction corridor have been removed from scenery.
- Cutblock data is confirmed using information from the Government of BC websites for Forest MapView and MapBC.
- This pipeline section is not within the Agricultural Land Reserve.
- Field Survey Completed December 15, 2014
- This plan represents the best information available at the time of survey. WSP Surveys and its employees take no responsibility for the location of any underground conduits, pipes, or other facilities whether shown on or omitted from this plan. All underground installations should be located by the respective authorities prior to construction.

LEGEND
Proposed Pipeline R/W shown thus:
Proposed Temp. Workspaces shown thus:
Proposed Log Decks & Storage Sites shown thus:
Right of Way shown thus:
Roads shown thus:
Highway shown thus:
Railway line shown thus:
Seismic line/trail shown thus:
Recreation Tenure shown thus:
Drainages shown thus:
Buried cable shown thus:
Overhead powerline shown thus:
Forest Cover Reserve shown thus:
Archaeological site shown thus:
Agricultural Land Reserve shown thus:
Coal Tenure shown thus:
Cutblock shown thus:
Fence bdy shown thus:
Fish/Wildlife Reserve bdy shown thus:
Grazing Tenure bdy shown thus:
Mineral Claim bdy shown thus:
Tree Farm Licence shown thus:
Quarry Reserve bdy shown thus:
Ungulate Winter Range bdy shown thus:
Visual Land Inventory shown thus:
Watershed Reserve bdy shown thus:
Wind Tenure bdy shown thus:
Woodlot bdy shown thus:
Fault Line shown thus:
Misc. Reserve/Notation bdy shown thus:
Misc. Licence/Permit bdy shown thus:
Stantec Wetland / Classification shown thus:
Crossings shown thus:
Old Growth Management Area shown thus:
Residences shown thus:
Indian Reserve shown thus:



APPROVED BY	PROJECT ENGINEER
-------------	------------------

No.	STATION	DESCRIPTION	No.	STATION	DESCRIPTION
T01174	(S3)457+637	Forestry Road / LGGR / R09511 444-1	N 6133167 E	648018	West Fraser Mills Ltd.
W03768	(S3)457+422	Tributary to Tseazakwa Creek / S4 / RRZ = 0 RMZ = 30	N 6132985 E	648133	ILMB
T01173	(S3)457+350	Forest Service Road (Nikitkwa) / HGGR / FSR 5897 01	N 6132925 E	648172	District Manager Skeena Stikine
T01184	(S3)457+295	Trail / Condition Unknown	N 6132878 E	648202	Crown
W03228	(S3)457+097	Tseazakwa Creek / S1 / RRZ = 50 RMZ = 20	N 6132711 E	648308	ILMB
T01172	(S3)456+940	Tributary to Babine Lake / S5 / RRZ = 0 RMZ = 30	N 6132591 E	648391	Crown
T01171	(S3)456+895	Forest Service Road (Nikitkwa) / HGGR / FSR 5897 01	N 6132541 E	648416	District Manager Skeena Stikine
T01167	(S3)456+783	Trail / Condition Unknown	N 6132447 E	648476	Crown
T01170	(S3)456+745	Trail / Condition Unknown	N 6132414 E	648497	Crown
W04068	(S3)456+475	Tributary to Babine Lake / Non-classified drainage	N 6132186 E	648642	ILMB
T01181	(S3)456+150	Trail / Condition Unknown	N 6131920 E	648811	Crown
T01168	(S3)455+944	Trail / Condition Unknown	N 6131738 E	648927	Crown
W03226	(S3)455+816	Unnamed Creek / No visible channel	N 6131631 E	648996	ILMB
T01164	(S3)455+549	Trail / Condition Unknown	N 6131398 E	649127	Crown
W04070	(S3)455+380	Tributary to Babine Lake / S5 / RRZ = 0 RMZ = 30	N 6131281 E	649204	ILMB
W03227	(S3)455+247	Tributary to Babine Lake / Non-classified drainage	N 6131134 E	649275	ILMB
T01163	(S3)454+104	Forestry Road / LGGR / R09511 441	N 6131010 E	649344	West Fraser Mills Ltd.
T01162	(S3)454+876	Trail / Condition Unknown	N 6130811 E	649456	Crown
U00094	(S3)454+383	Overhead Powerline	N 6130493 E	649738	BC Hydro
T01161	(S3)454+370	Forest Service Road (Nikitkwa) / HGGR / FSR 5897 01	N 6130453 E	649751	District Manager Skeena Stikine
W03234	(S3)454+197	Heal Creek / S2 / RRZ = 30 RMZ = 20	N 6130385 E	650217	ILMB
T01169	(S3)453+857	Trail / Condition Unknown	N 6130385 E	650217	Crown
No.	STATION	DESCRIPTION	NAD 83 UTM ZONE	9	OWNER

TABLE OF CROSSINGS

Prince Rupert Gas Transmission Project

TransCanada
In business to deliver

PRINCE RUPERT GAS TRANSMISSION LTD.

PROPOSED VARIABLE WIDTH (32 to 41m) PIPELINE R/W FROM a-68-D TO a-69-D, 93-M-8 (S1), a-69-D, 93-M-8 TO d-9-G, 93-M-7 (S2 & S3) & FROM d-9-G, 93-M-7 TO d-59-I, 93-M-5 (S4) (SHEET CHAINAGE: 453+393 TO 457+746)

Unsurveyed Crown Land/Crown Land/Private Land/Indian Reserve Lands, Cassiar District

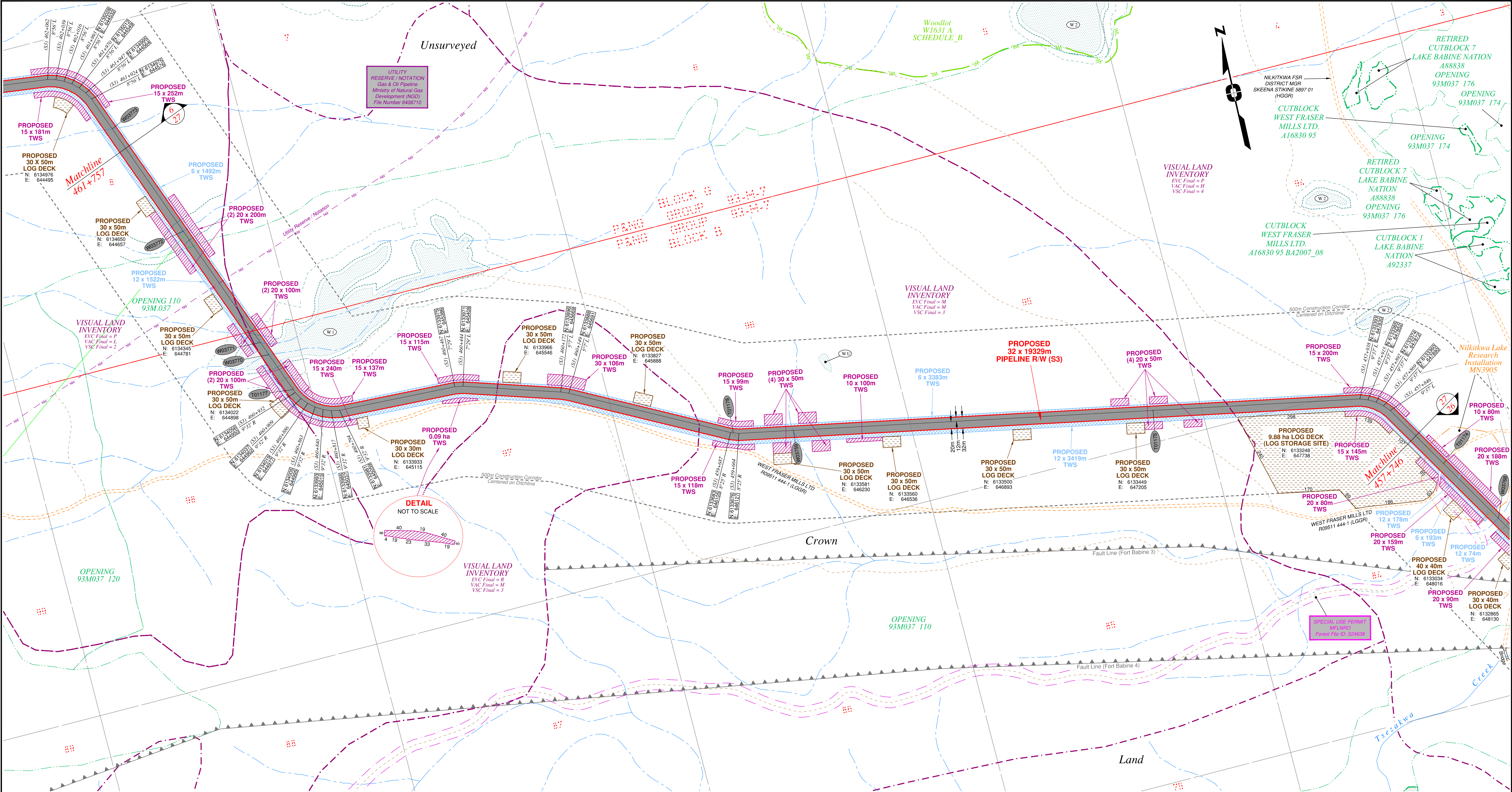
The intended plot size of this plan is 864mm in width by 560mm in height when plotted at a scale of 1: 5000 (use D size sheet)

BCGS: 93M-027, 028, 033, 034, 035, 036, 037, 038, 042, 043

WSP Surveys (BC) Limited Partnership
Fort St John BC
(250) 787-0300

WSP: 130275CP04R1
AFE: 5005948
TCPL: 004776-09-ML-03-136
ePASS: 10050544

Sheet 26 of 27
REV. 1

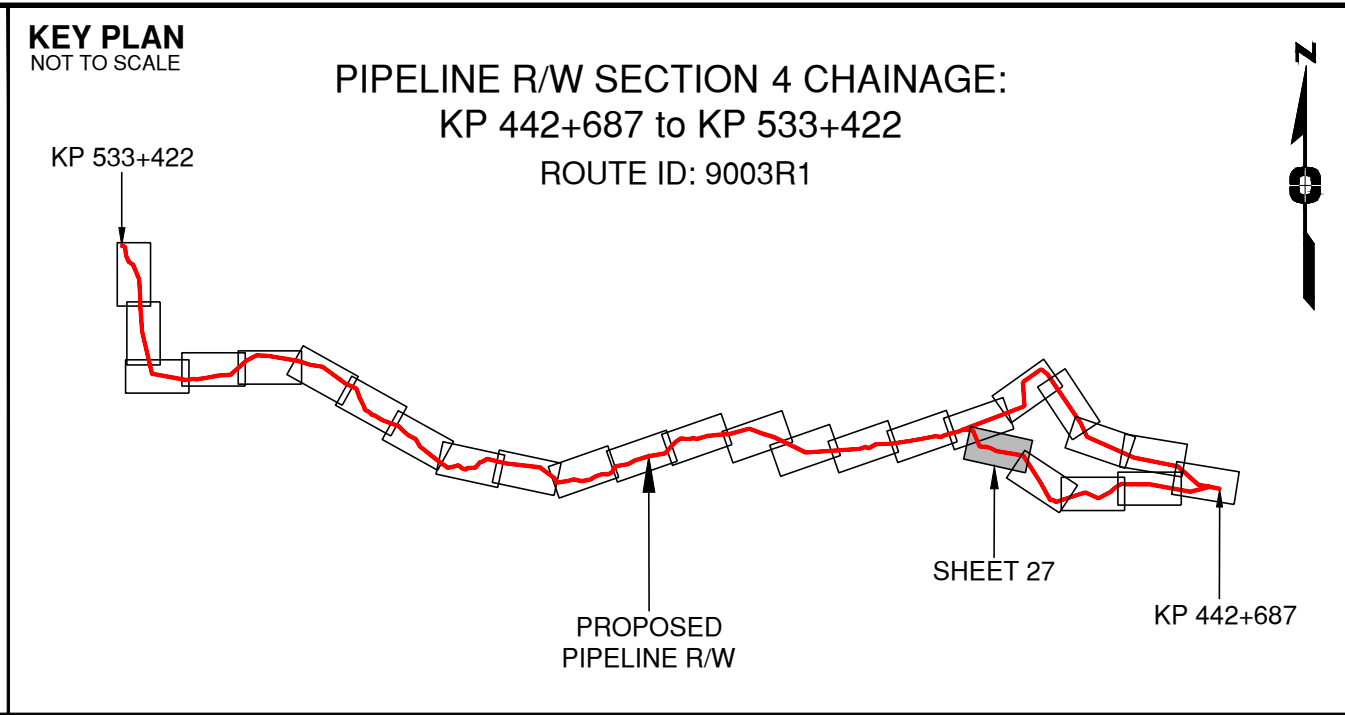


Rev	Revision Description	Date(Y/M/D)	By
0	Original Plan Prepared	2014/09/17	DC
1	Add P/L R/W (S3), Babine Lake - KP 443+346 to 462+675 Update P/L R/W (S2), Nilotkwa Lake - KP 458+764 to 463+877 Update Construction Corridor, Area Table, Tenures & Scenery	2015/01/15	DC

NOTES:

- Co-ordinates are NAD 83 Grid. UTM Zone 9 and Zone 10. Distances shown are in metres and decimals thereof. Chainages are two-dimensional and are on pipeline ditchline. Pipeline segment length derived from ditchline chainages.
- Fault Lines data has been provided from BGC Engineering Inc. Desktop Study dated December 20, 2013.
- Water crossing information has been provided by Stantec. Wetlands data has been provided by Stantec dated August 29, 2014. Freshwater Atlas wetlands outside of construction corridor have been removed from scenery.
- Cutblock data is confirmed using information from the Government of BC websites for Forest MapView and MapBC.
- This pipeline section is not within the Agricultural Land Reserve.
- Field Survey Completed December 15, 2014
- This plan represents the best information available at the time of survey. WSP Surveys and its employees take no responsibility for the location of any underground conduits, pipes, or other facilities whether shown on or omitted from this plan. All underground installations should be located by the respective authorities prior to construction.

LEGEND
Proposed Pipeline R/W shown thus:
Proposed Temp. Workspaces shown thus:
Proposed Log Decks & Storage Sites shown thus:
Right of Way shown thus:
Roads shown thus:
Highway shown thus:
Railway line shown thus:
Seismic line/trail shown thus:
Drainages shown thus:
Buried cable shown thus:
Buried pipe shown thus:
Overhead powerline shown thus:
Fault Line shown thus:
Riparian Reserve Zone shown thus:
Riparian Management Zone shown thus:
Forest Cover Reserve shown thus:
Archaeological site shown thus:
Agricultural Land Reserve body shown thus:
Coal Tenure body shown thus:
Cutblock body shown thus:
Fence body shown thus:
Fish/Wildlife Reserve body shown thus:
Grazing Tenure body shown thus:
Mineral Claim body shown thus:
Tree Farm Licence shown thus:
Quarry Reserve body shown thus:
Ungulate Winter Range body shown thus:
Visual Land Inventory shown thus:
Watershed Reserve body shown thus:
Wind Tenure body shown thus:
Woodlot body shown thus:
Misc. Reserve/Notation body shown thus:
Misc. Licence/Permit body shown thus:
Crossings shown thus:
Old Growth Management Area shown thus:
Residences shown thus:
Indian Reserve shown thus:



APPROVED BY _____

PROJECT ENGINEER _____

No.	STATION	DESCRIPTION	OWNER
W03772	(S3)461+477	Tributary to Nilotkwa Lake / S4 / RRZ = 0 RMZ = 30	ILMB
W03771	(S3)461+101	Tributary to Nilotkwa Lake / Non-classified drainage	ILMB
W03770	(S3)460+060	Tributary to Tsezakwa Creek / S3 / RRZ = 20 RMZ = 20	ILMB
T01177	(S3)460+942	Trail / Condition Unknown	Crown
T01178	(S3)459+680	Trail / Condition Unknown	Crown
W03759	(S3)459+513	Tributary to Nilotkwa Lake / Non-classified drainage	ILMB
T01175	(S3)458+512	Trail / Condition Unknown	Crown

Prince Rupert Gas Transmission Project

PRINCE RUPERT GAS TRANSMISSION LTD.

PROPOSED VARIABLE WIDTH (32 to 41m) PIPELINE R/W FROM a-68-D TO a-69-D, 93-M-8 (S1), a-69-D, 93-M-8 TO d-9-G, 93-M-7 (S2 & S3) & FROM d-9-G, 93-M-7 TO d-59-I, 93-M-5 (S4) (SHEET CHAINAGE: 457+746 TO 461+757)

Unsurveyed Crown Land/Crown Land/Private Land/Indian Reserve Lands, Cassiar District

BCGS: 93M.027, 028, 033, 034, 035, 036, 037, 038, 042, 043

The intended plot size of this plan is 864mm in width by 560mm in height when plotted at a scale of 1: 5000 (use D size sheet)

Sheet 27 of 27

WSP Surveys (BC) Limited Partnership
Fort St John BC
(250) 787-0300

WSP: 130275CP04R1
AFE: 5005948
TCPL: 004776-09-ML-03-136
ePASS: 10050544

REV. 1