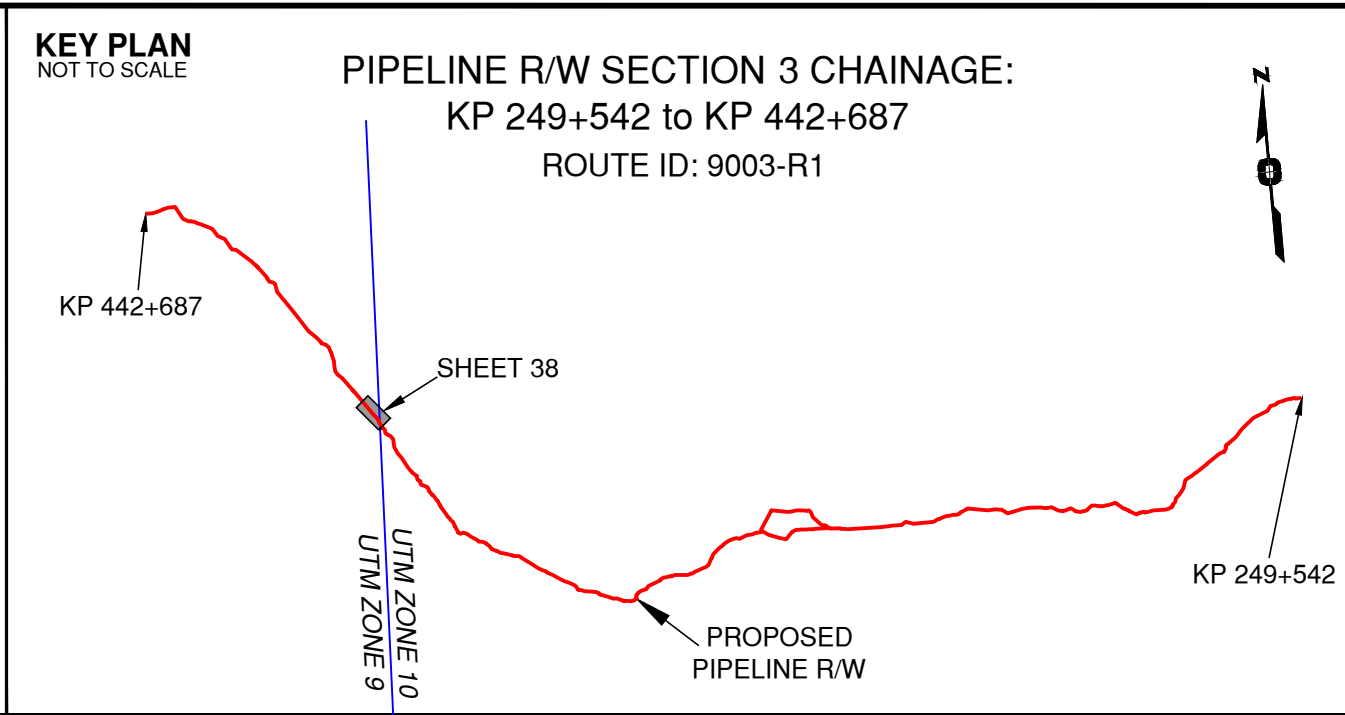


Rev	Revision Description	Date(Y/M/D)	By
0	Original Plan Prepared	2015/01/15	DC
1	Update P/L R/W (S4) Morrison Head - KP 436+715 to 440+846 Update Construction Corridor with Area Table & ePass Update Crossings, Scenery & Tenures	2015/01/14	DC

NOTES:

- Co-ordinates are NAD 83 Grid. UTM Zone 9 and Zone 10. Distances shown are in metres and decimals thereof. Chainages are two-dimensional and are on pipeline ditchline. Pipeline segment length derived from ditchline chainages.
- Fault Lines data has been provided from BGC Engineering Inc. Desktop Study dated December 20, 2013.
- Water crossing information has been provided by Stantec. Wetlands data has been provided by Stantec dated August 29, 2014. Freshwater Atlas wetlands outside of construction corridor have been removed from scenery.
- Cutblock data is confirmed using information from the Government of BC websites for Forest MapView and MapBC.
- This pipeline section is not within the Agricultural Land Reserve.
- Field Survey Completed December 15, 2014
- This plan represents the best information available at the time of survey. WSP Surveys and its employees take no responsibility for the location of any underground conduits, pipes, or other facilities whether shown on or omitted from this plan. All underground installations should be located by the respective authorities prior to construction.

LEGEND
Proposed Pipeline R/W shown thus:
Proposed Temp. Workspaces shown thus:
Proposed Log Decks & Storage Sites shown thus:
Right of Way shown thus:
Roads shown thus:
Highway shown thus:
Railway line shown thus:
Seismic line/trail shown thus:
Drainages shown thus:
Buried cable shown thus:
Buried pipe shown thus:
Overhead powerline shown thus:
Riparian Reserve Zone shown thus:
Riparian Management Zone shown thus:
Forest Cover Reserve shown thus:
Archaeological site shown thus:
Agricultural Land Reserve bdy shown thus:
Coal Tenure bdy shown thus:
Cutblock bdy shown thus:
Fence bdy shown thus:
Fish/Wildlife Reserve bdy shown thus:
Grazing Tenure bdy shown thus:
Mineral Claim bdy shown thus:
Tree Farm Licence shown thus:
Quarry Reserve bdy shown thus:
Ungulate Winter Range bdy shown thus:
Visual Land Inventory shown thus:
Watershed Reserve bdy shown thus:
Wind Tenure bdy shown thus:
Woodlot bdy shown thus:
Fault Line shown thus:
Misc Reserve/Notation bdy shown thus:
Misc Licence/Permit bdy shown thus:
Stantec Wetland / Classification shown thus:
Crossings shown thus:
Old Growth Management Area shown thus:
Residences shown thus:
Power Pole shown thus:
Culturally Modified Trees with Face shown thus:



APPROVED BY _____

PROJECT ENGINEER _____

No.	STATION	DESCRIPTION	No.	STATION	DESCRIPTION	No.	STATION	DESCRIPTION
W01577	(S4)400+989	Nizik Creek / Beaver Dam Complex / RRZ = 30 RMZ = 20	N 6106121 E 689686	ILMB				
W01576	(S4)400+957	Nizik Creek / S2 / RRZ = 30 RMZ = 20	N 6106096 E 689707	ILMB				
T00830	(S4)400+708	Trail / Condition Unknown	N 6105993 E 689670	Crown				
T00839	(S4)400+646	Forestry Road / LGGR / R06569 6	N 6105898 E 689608	Canadian Forest Products Ltd				
W01575	(S4)400+201	Trib to Natowite Lake / S5 / RRZ = 0 RMZ = 30	N 6105518 E 690195	ILMB				
T00819	(S4)400+078	Trail / Condition Unknown	N 6105424 E 690274	Crown				
W02768	(S4)399+758	Trib to Natowite Lake / S3 / RRZ = 20 RMZ = 20	N 6105179 E 690480	ILMB				
T01218	(S4)399+415	Trail / Condition Unknown	N 6104917 E 690701	Crown				
W01574	(S4)399+077	Trib to Natowite Lake / No visible channel	N 6104658 E 690919	ILMB				
T00368	(S4)398+917	Forestry Road / LGGR / R06392 21	N 6104536 E 691022	Canadian Forest Products Ltd				
No.	STATION	DESCRIPTION	NAD 83 UTM ZONE	9	OWNER			

TABLE OF CROSSINGS

Prince Rupert Gas Transmission Project

PRINCE RUPERT GAS TRANSMISSION LTD.

PROPOSED 32m PIPELINE R/W FROM a-18-A, 93-N-1 TO d-67-H, 93-K-14 (S1), d-67-H TO c-68-G, 93-K-14 (S2 & S3) & FROM c-68-G, 93-K-14 TO a-68-D, 93-M-8 (S4) (SHEET CHAINAGE: 397+942 TO 401+203)

Unsurveyed Crown Land/Crown Land/Private Land, Cassiar District & Range 5 Coast District

The intended plot size of this plan is 864mm in width by 560mm in height when plotted at a scale of 1: 5000 (use D size sheet)

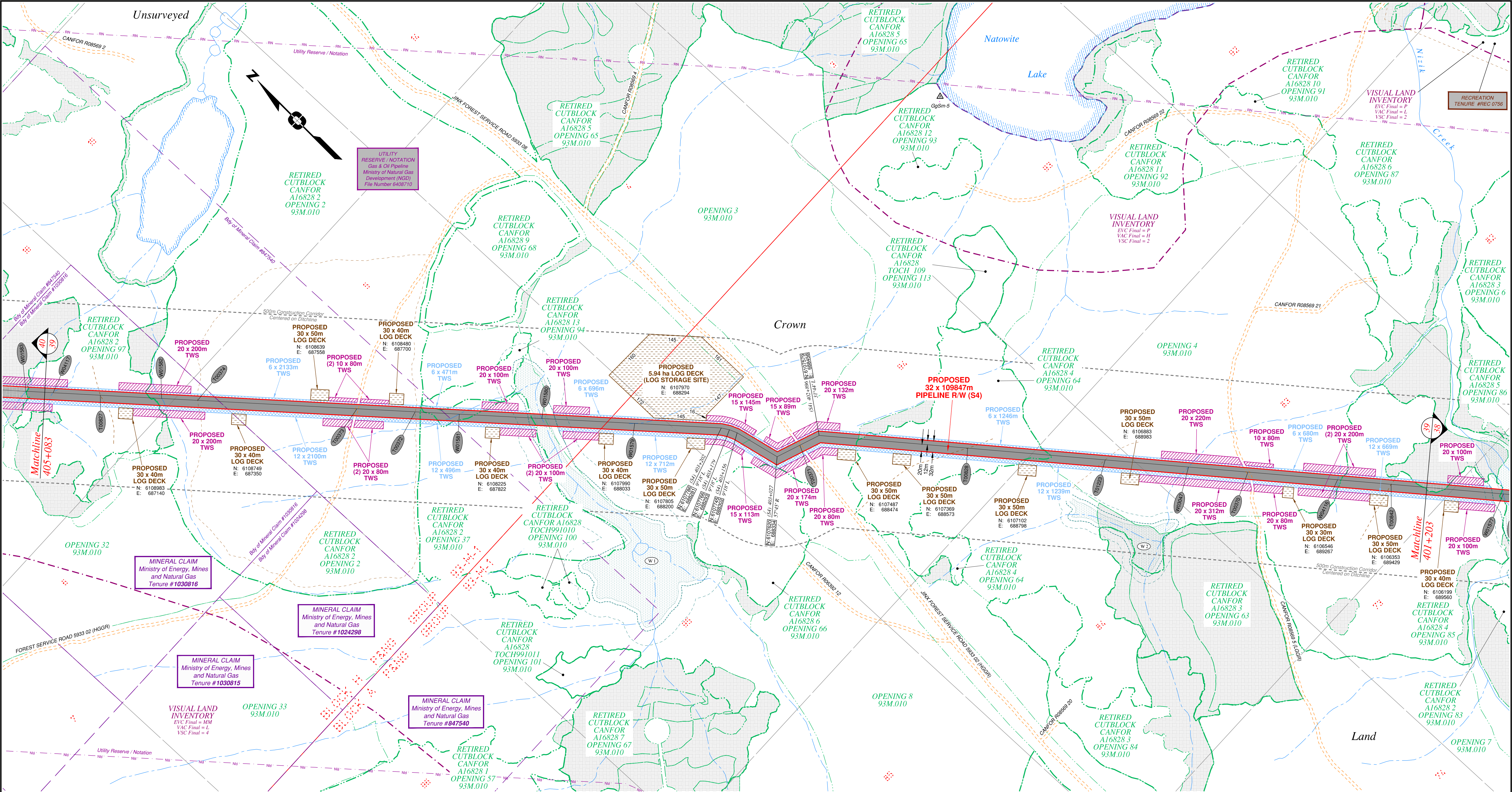
BCGS: 93K.081, 82.83, 84, 85, 86, 87, 88, 89, 91, 94, 95, 96, 97, 99, 100 / 93M.010, 20, 28, 29, 30, 38 / 93N.001, 10

Sheet 38 of 51

WSP Surveys (BC) Limited Partnership
Fort St John BC
(250) 787-0300

WSP: 130275CP03R1
AFFE: 5005948
TCPL: 004776-09-ML-03-100
ePASS: 10050542

REV. 1

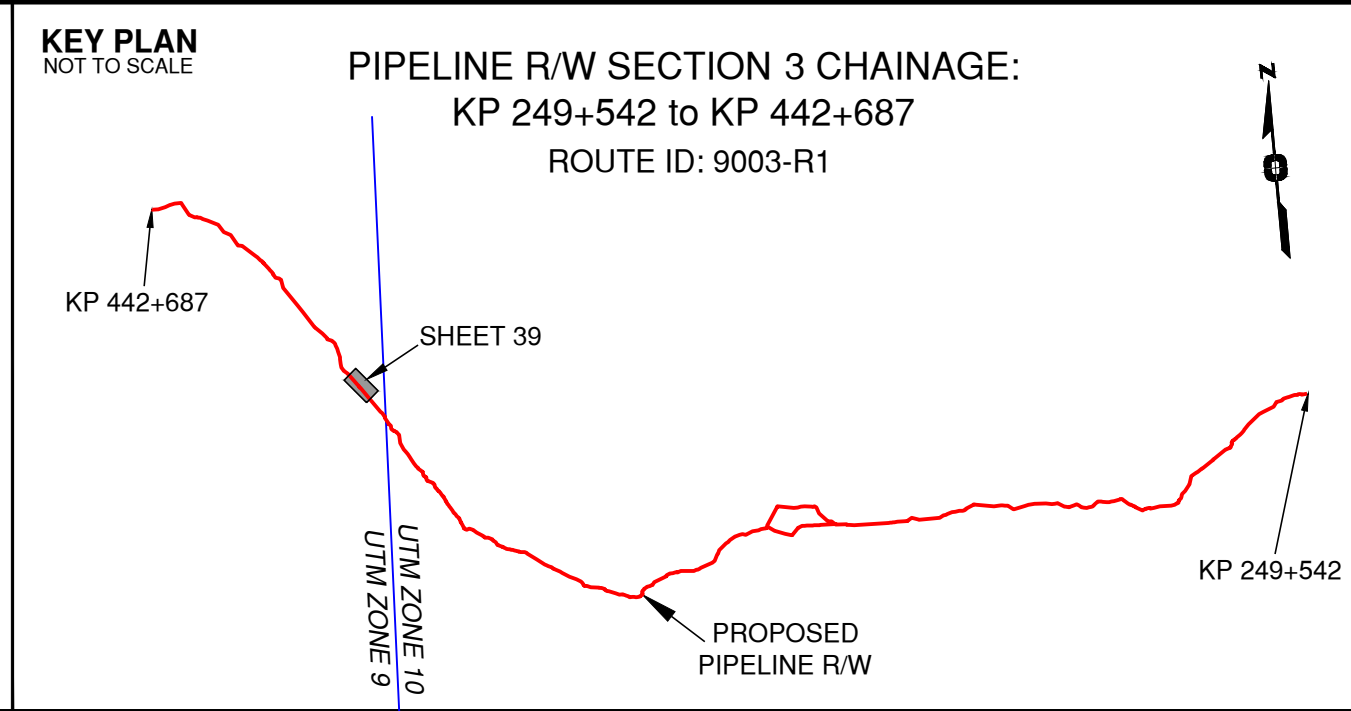


Rev	Revision Description	Date(Y/M/D)	By
0	Original Plan Prepared	2015/01/15	DC
1	Update P/L R/W (S4) Morrison Head - KP 436+715 to 440+846 Update Construction Corridor with Area Table & ePass Update Crossings, Scenery & Tenures	2015/01/14	DC

NOTES:

- Co-ordinates are NAD 83 Grid. UTM Zone 9 and Zone 10. Distances shown are in metres and decimals thereof. Chainages are two-dimensional and are on pipeline ditchline. Pipeline segment length derived from ditchline chainages.
- Fault Lines data has been provided from BGC Engineering Inc. Desktop Study dated December 20, 2013.
- Water crossing information has been provided by Stantec. Wetlands data has been provided by Stantec dated August 29, 2014. Freshwater Atlas wetlands outside of construction corridor have been removed from scenery.
- Cutblock data is confirmed using information from the Government of BC websites for Forest MapView and MapBC.
- This pipeline section is not within the Agricultural Land Reserve.
- Field Survey Completed December 15, 2014
- This plan represents the best information available at the time of survey. WSP Surveys and its employees take no responsibility for the location of any underground conduits, pipes, or other facilities whether shown on or omitted from this plan. All underground installations should be located by the respective authorities prior to construction.

LEGEND
Proposed Pipeline R/W shown thus:
Proposed Temp. Workspaces shown thus:
Proposed Log Decks & Storage Sites shown thus:
Right of Way shown thus:
Roads shown thus:
Highway shown thus:
Railway line shown thus:
Seismic line/trail shown thus:
Drainages shown thus:
Buried cable shown thus:
Buried pipe shown thus:
Overhead powerline shown thus:
Forest Cover Reserve shown thus:
Archaeological site shown thus:
Agricultural Land Reserve shown thus:
Coal Tenure bdy shown thus:
Cutblock bdy shown thus:
Fence bdy shown thus:
Fish/Wildlife Reserve bdy shown thus:
Grazing Tenure bdy shown thus:
Mineral Claim bdy shown thus:
Tree Farm Licence shown thus:
Quarry Reserve bdy shown thus:
Ungulate Winter Range bdy shown thus:
Visual Land Inventory shown thus:
Watershed Reserve bdy shown thus:
Wind Tenure bdy shown thus:
Woodlot bdy shown thus:
Line shown thus:
Misc Reserve/Notation bdy shown thus:
Misc Licence/Permit bdy shown thus:
Stantec Wetland / Classification shown thus:
Crossings shown thus:
Old Growth Management Area shown thus:
Residences shown thus:
Power Pole shown thus:
Culturally Modified Trees with Face shown thus:



APPROVED BY	
PROJECT ENGINEER	

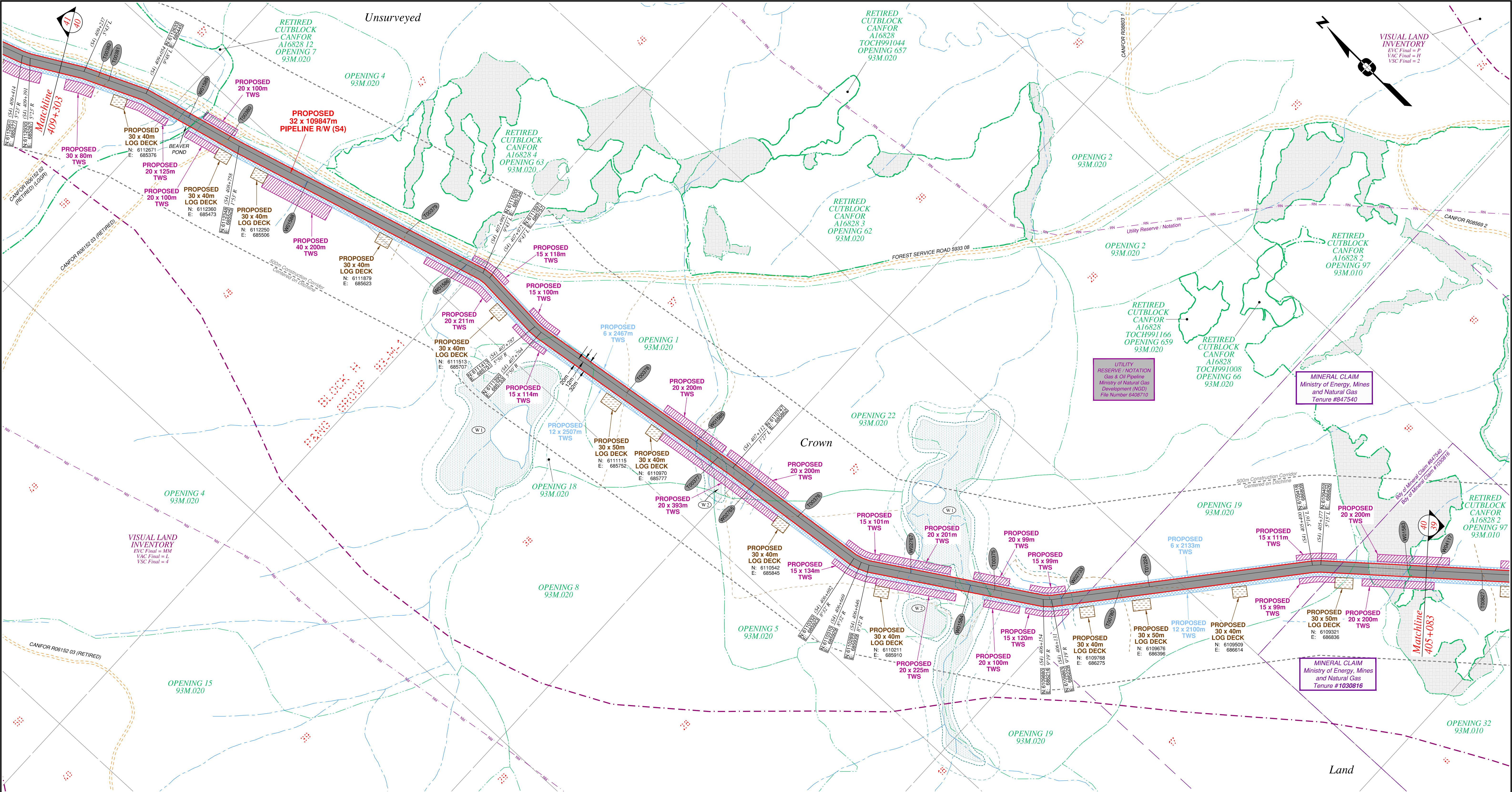
No.	STATION	DESCRIPTION	OWNER
W04117	(S4)405+059	Water Course	N 6109166 E 687038 ILMB
T00827	(S4)404+928	Trail / Condition Unknown	N 6109009 E 687126 Crown
W01582	(S4)404+758	Trib to Natowite Lake / Non-classified drainage	N 6108942 E 687240 ILMB
T00374	(S4)404+658	Trail / Condition Unknown	N 6108868 E 687307 Crown
T00373	(S4)404+215	Forest Service Road (Jinx) / HGGR / FSR 5933 02	N 6108539 E 687603 District Manager Nadina
T00372	(S4)404+053	Trail / Condition Unknown	N 6108418 E 687712 Crown
W01581	(S4)403+930	Trib to Natowite Lake / No visible channel	N 6108327 E 687794 ILMB
W01580	(S4)403+701	Trib to Natowite Lake / S2 / RHZ = 30 RMZ = 20	N 6108156 E 687947 ILMB
W01579	(S4)403+443	Trib to Natowite Lake / No visible channel	N 6107995 E 688120 ILMB
T00371	(S4)402+956	Forest Service Road (Jinx) / HGGR / FSR 5933 02	N 6107588 E 688401 District Manager Nadina
T00828	(S4)402+482	Trail / Condition Unknown	N 6107263 E 688725 Crown
T01223	(S4)402+099	Trail / Condition Unknown	N 6106989 E 688972 Crown
W03047	(S4)401+867	Trib to Natowite Lake / Non-classified drainage	N 6106792 E 689121 ILMB
T00370	(S4)401+701	Forestry Road / LGGR / R08569 5	N 6106665 E 689228 Canadian Forest Products Ltd
W04116	(S4)401+451	Water Course	N 6106474 E 689389 ILMB
T00842	(S4)401+302	Trail / Condition Unknown	N 6106360 E 689485 Crown
No.	STATION	DESCRIPTION	NAD 83 UTM ZONE 9 OWNER

Prince Rupert Gas Transmission Project

In business to deliver

PRINCE RUPERT GAS TRANSMISSION LTD.
PROPOSED 32m PIPELINE R/W FROM a-18-A, 93-N-1 TO d-67-H, 93-K-14 (S1), d-67-H TO c-68-G, 93-K-14 (S2 & S3) & FROM c-68-G, 93-K-14 TO a-68-D, 93-M-8 (S4) (SHEET CHAINAGE: 401+203 TO 405+083)
Unsurveyed Crown Land/Crown Land/Private Land, Cassiar District & Range 5 Coast District
The intended plot size of this plan is 864mm in width by 560mm in height when plotted at a scale of 1: 5000 (use D size sheet)
BCGS: 93K-081, 82, 83, 84, 85, 86, 87, 88, 89, 91, 94, 95, 96, 97, 99, 100 / 93M-010, 20, 28, 29, 30, 38 / 93N-001, 10
Sheet 39 of 51

WSP Surveys (BC) Limited Partnership Fort St John BC (250) 787-0300	WSP: 130275CP03R1 AFE: 5005948 TCPL: 004776-09-ML-03-101 ePASS: 10050542	REV. 1
---	---	--------

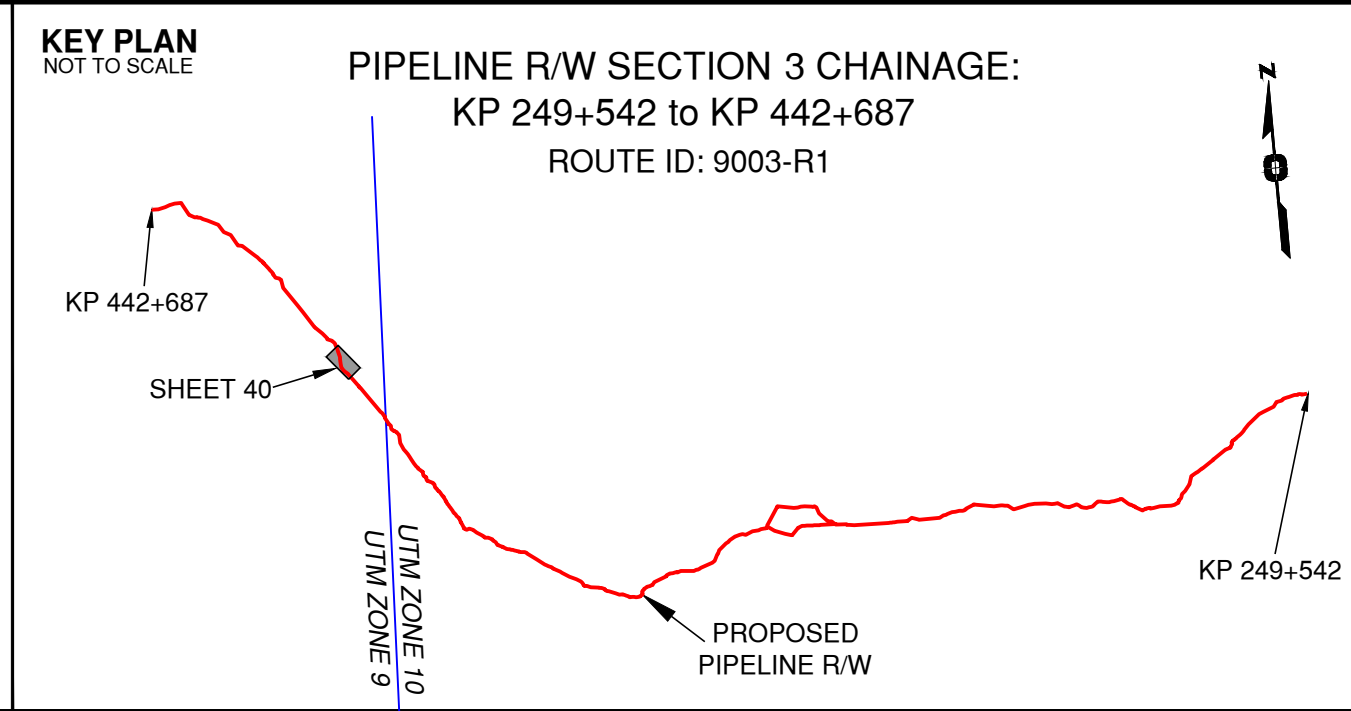


Rev	Revision Description	Date(Y/M/D)	By
0	Original Plan Prepared	2015/01/15	DC
1	Update P/L R/W (S4) Morrison Head - KP 436+715 to 440+846 Update Construction Corridor with Area Table & ePass Update Crossings, Scenery & Tenures	2015/01/14	DC

NOTES:

- Co-ordinates are NAD 83 Grid. UTM Zone 9 and Zone 10. Distances shown are in metres and decimals thereof. Chainages are two-dimensional and are on pipeline ditchline. Pipeline segment length derived from ditchline chainages.
- Fault Lines data has been provided from BGC Engineering Inc. Desktop Study dated December 20, 2013.
- Water crossing information has been provided by Stantec. Wetlands data has been provided by Stantec dated August 29, 2014. Freshwater Atlas wetlands outside of construction corridor have been removed from scenery.
- Cutblock data is confirmed using information from the Government of BC websites for Forest MapView and MapBC.
- This pipeline section is not within the Agricultural Land Reserve.
- Field Survey Completed December 15, 2014
- This plan represents the best information available at the time of survey. WSP Surveys and its employees take no responsibility for the location of any underground conduits, pipes, or other facilities whether shown on or omitted from this plan. All underground installations should be located by the respective authorities prior to construction.

LEGEND
Proposed Pipeline R/W shown thus:
Proposed Temp. Workspaces shown thus:
Proposed Log Decks & Storage Sites shown thus:
Right of Way shown thus:
Roads shown thus:
Highway shown thus:
Railway line shown thus:
Seismic line/trail shown thus:
Recreation Tenure shown thus:
Drainages shown thus:
Buried cable shown thus:
Overhead powerline shown thus:
Riparian Reserve Zone shown thus:
Riparian Management Zone shown thus:
Forest Cover Reserve shown thus:
Archaeological site shown thus:
Agricultural Land Reserve bdy shown thus:
Coal Tenure bdy shown thus:
Cutblock bdy shown thus:
Fence bdy shown thus:
Fish/Wildlife Reserve bdy shown thus:
Grazing Tenure bdy shown thus:
Mineral Claim bdy shown thus:
Tree Farm Licence shown thus:
Quarry Reserve bdy shown thus:
Ungulate Winter Range bdy shown thus:
Visual Land Inventory shown thus:
Watershed Reserve bdy shown thus:
Wind Tenure bdy shown thus:
Woodlot bdy shown thus:
Fault Line shown thus:
Misc Reserve/Notation bdy shown thus:
Misc Licence/Permit bdy shown thus:
Stantec Wetland / Classification shown thus:
Crossings shown thus:
Old Growth Management Area shown thus:
Residences shown thus:
Power Pole shown thus:
Culturally Modified Trees with Face shown thus:



APPROVED BY	PROJECT ENGINEER
TABLE OF CROSSINGS	
T00382 (S4)409+194 Forestry Road / LGGR / R06152 02 (Retired)	N 6112760 E 686385 Crown
T00381 (S4)409+164 Trail / Condition Unknown	N 6112733 E 686398 Crown
W01589 (S4)408+919 Trib to Hautele Creek / S3 / RRZ = 20 RMZ = 20	N 6112503 E 685482 ILMB
T00380 (S4)408+793 Forestry Road / LGGR / R06152 03 (Retired)	N 6112382 E 685516 Crown
W01588 (S4)408+544 Trib to Hautele Creek / Non-classified drainage	N 6112144 E 685589 ILMB
T00379 (S4)408+234 Trail / Condition Unknown	N 6111848 E 685682 Crown
W01586 (S4)408+046 Trib to Hautele Creek / S6 / RRZ = 0 RMZ = 20	N 6111669 E 685739 ILMB
T00378 (S4)407+473 Trail / Condition Unknown	N 6111102 E 685802 Crown
W01585 (S4)407+238 Trib to Hautele Creek / Non-classified drainage	N 6110871 E 685841 ILMB
T00377 (S4)407+163 Trail / Condition Unknown	N 6110797 E 685854 Crown
W02765 (S4)407+038 Trib to Hautele Creek / S4 / RRZ = 0 RMZ = 30	N 6110674 E 685873 ILMB
T00376 (S4)406+887 Trail / Condition Unknown	N 6110524 E 686095 Crown
W02767 (S4)406+528 Trib to Hautele Creek / S4 / RRZ = 0 RMZ = 30	N 6110191 E 686005 ILMB
W01584 (S4)406+359 Trib to Hautele Creek / S2 / RRZ = 30 RMZ = 20	N 6110051 E 686099 ILMB
T00375 (S4)406+291 Trail / Condition Unknown	N 6109993 E 686137 Crown
W02733 (S4)406+103 Trib to Hautele Creek / S4 / RRZ = 0 RMZ = 30	N 6109846 E 686251 ILMB
T00780 (S4)405+940 Trail / Condition Unknown	N 6109747 E 686380 Crown
T01224 (S4)405+856 Trail / Condition Unknown	N 6109696 E 686447 Crown
W01583 (S4)405+135 Trib to Natowite Lake / Non-classified drainage	N 6109223 E 686088 ILMB
No. STATION DESCRIPTION	NAD 83 UTM ZONE 9 OWNER

Prince Rupert Gas Transmission Project

TransCanada
In business to deliver

PRINCE RUPERT GAS TRANSMISSION LTD.

PROPOSED 32m PIPELINE R/W FROM a-18-A, 93-N-1 TO d-67-H, 93-K-14 (S1), d-67-H TO c-68-G, 93-K-14 (S2 & S3) & FROM c-68-G, 93-K-14 TO a-68-D, 93-M-8 (S4) (SHEET CHAINAGE: 405+083 TO 409+303)

Unsurveyed Crown Land/Crown Land/Private Land, Cassiar District & Range 5 Coast District

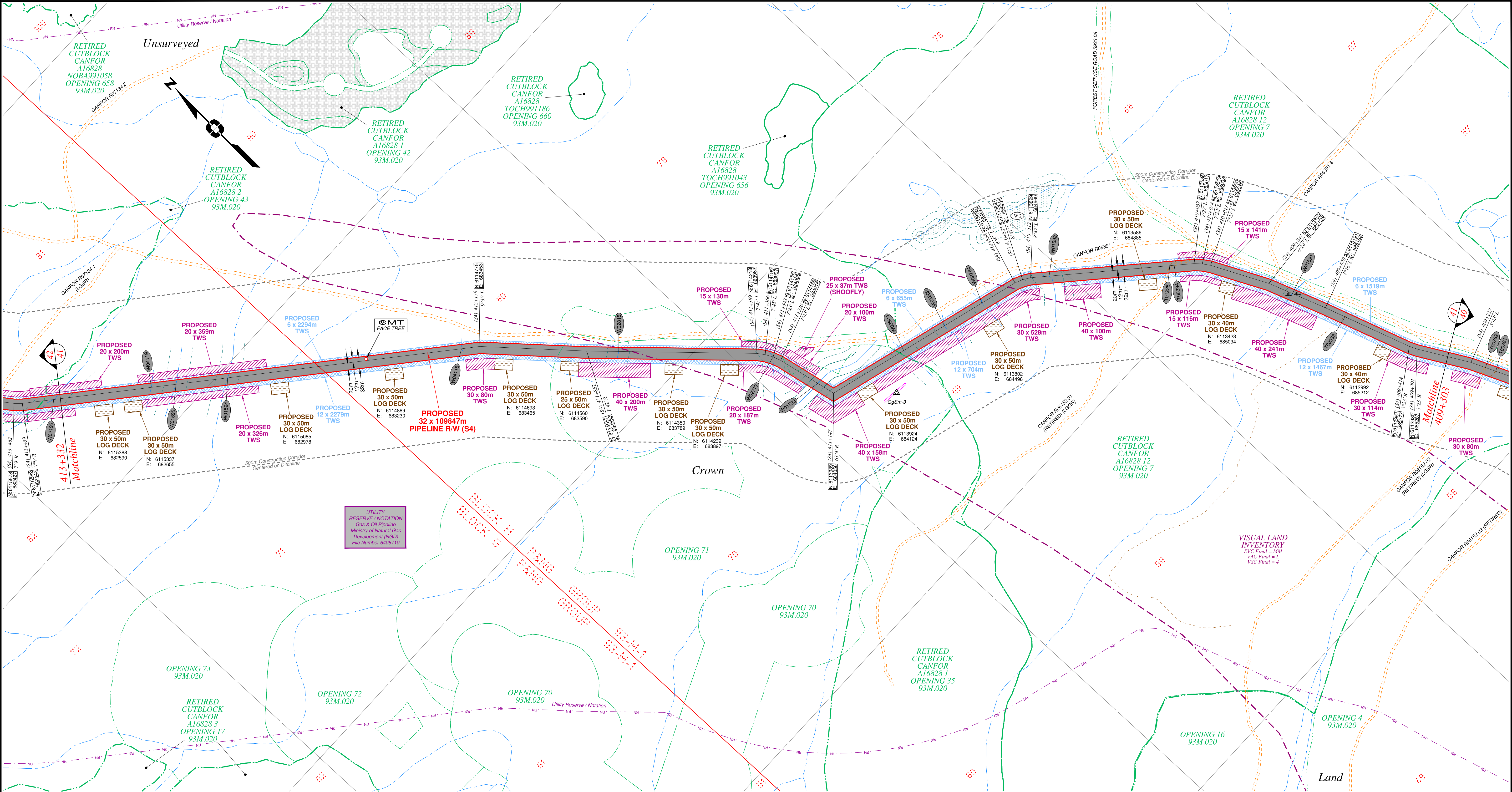
The intended plot size of this plan is 864mm in width by 560mm in height when plotted at a scale of 1: 5000 (use D size sheet)

BCGS: 93K.081, 82.83, 84.85, 86.87, 88.89, 91.94, 95.96, 97.99, 100 / 93M.010, 20.28, 29.30, 38 / 93N.001, 101

WSP Surveys (BC) Limited Partnership
Fort St John BC
(250) 787-0300

WSP: 130275CP03R1
AFE: 5005948
TCPL: 004776-09-ML-03-102
ePASS: 10050542

REV. 1

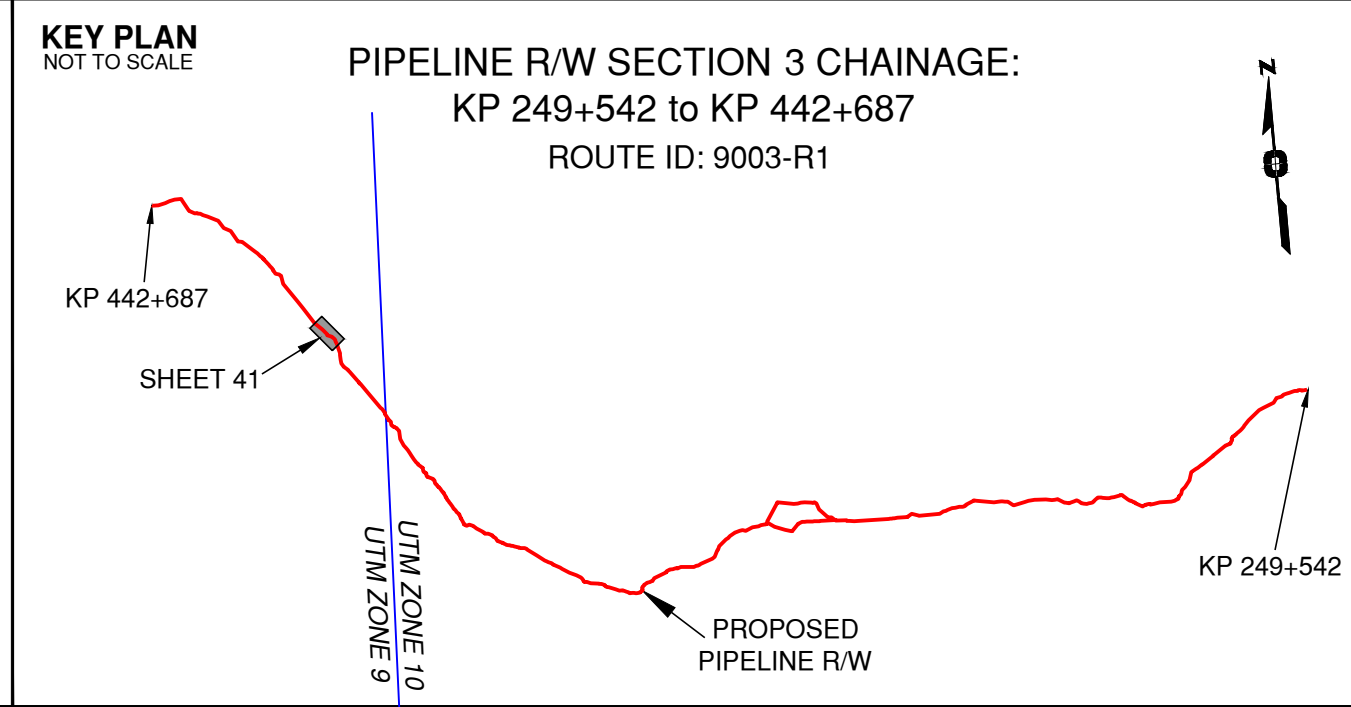


Rev	Revision Description	Date(Y/M/D)	By
0	Original Plan Prepared	2015/01/15	DC
1	Update P/L R/W (S4) Morrison Head - KP 436+715 to 440+846 Update Construction Corridor with Area Table & ePass Update Crossings, Scenery & Tenures	2015/01/14	DC

NOTES:

- Co-ordinates are NAD 83 Grid. UTM Zone 9 and Zone 10. Distances shown are in metres and decimals thereof. Chainages are two-dimensional and are on pipeline ditchline. Pipeline segment length derived from ditchline chainages.
- Fault Lines data has been provided from BGC Engineering Inc. Desktop Study dated December 20, 2013.
- Water crossing information has been provided by Stantec. Wetlands data has been provided by Stantec dated August 29, 2014. Freshwater Atlas wetlands outside of construction corridor have been removed from scenery.
- Cutblock data is confirmed using information from the Government of BC websites for Forest MapView and MapBC.
- This pipeline section is not within the Agricultural Land Reserve.
- Field Survey Completed December 15, 2014
- This plan represents the best information available at the time of survey. WSP Surveys and its employees take no responsibility for the location of any underground conduits, pipes, or other facilities whether shown on or omitted from this plan. All underground installations should be located by the respective authorities prior to construction.

LEGEND
Proposed Pipeline R/W shown thus:
Proposed Temp. Workspaces shown thus:
Proposed Log Decks & Storage Sites shown thus:
Right of Way shown thus:
Roads shown thus:
Highway shown thus:
Railway line shown thus:
Seismic line/trail shown thus:
Recreation Tenure shown thus:
Drainages shown thus:
Buried cable shown thus:
Buried pipe shown thus:
Overhead powerline shown thus:
Riparian Reserve Zone shown thus:
Riparian Management Zone shown thus:
Forest Cover Reserve shown thus:
Archaeological site shown thus:
Agricultural Land Reserve bdy shown thus:
Coal Tenure bdy shown thus:
Cutblock bdy shown thus:
Fence bdy shown thus:
Fish/Wildlife Reserve bdy shown thus:
Grazing Tenure bdy shown thus:
Mineral Claim bdy shown thus:
Tree Farm Licence shown thus:
Quarry Reserve bdy shown thus:
Ungulate Winter Range bdy shown thus:
Visual Land Inventory shown thus:
Watershed Reserve bdy shown thus:
Wind Tenure bdy shown thus:
Woodlot bdy shown thus:
Fault Line shown thus:
Misc Reserve/Notation bdy shown thus:
Misc Licence/Permit bdy shown thus:
Stantec Wetland / Classification shown thus:
Crossings shown thus:
Old Growth Management Area shown thus:
Residences shown thus:
Culturally Modified Trees with Face shown thus:



APPROVED BY
PROJECT ENGINEER

No.	STATION	DESCRIPTION	No.	STATION	DESCRIPTION
W04119	(S4)413-078	Water Course	N 6115340 E 682728	ILMB	
W01595	(S4)413-009	Trib to Hautele Creek / S4 / RRZ = 0 RMZ = 30	N 6115297 E 682782	ILMB	
W01594	(S4)412+864	Trib to Hautele Creek / S5 / RRZ = 0 RMZ = 30	N 6115209 E 682896	ILMB	
W04118	(S4)412+210	Water Course	N 6114807 E 683412	ILMB	
W02815	(S4)411+773	Trib to Hautele Creek / S4 / RRZ = 0 RMZ = 30	N 6114493 E 683716	ILMB	
W02777	(S4)411+343	Trib to Hautele Creek / S4 / RRZ = 0 RMZ = 30	N 6114179 E 684008	ILMB	
W01593	(S4)411+199	Trib to Hautele Creek / S3 / RRZ = 20 RMZ = 20	N 6114040 E 684044	ILMB	
W02804	(S4)410+920	Trib to Hautele Creek / S4 / RRZ = 0 RMZ = 30	N 6113935 E 684277	ILMB	
W02802	(S4)410+787	Trib to Hautele Creek / S4 / RRZ = 0 RMZ = 30	N 6113904 E 684405	ILMB	
W02764	(S4)410+666	Trib to Hautele Creek / S4 / RRZ = 0 RMZ = 30	N 6113875 E 684523	ILMB	
W01592	(S4)410+461	Trib to Hautele Creek / S2 / RRZ = 30 RMZ = 20	N 6113796 E 684708	ILMB	
T01225	(S4)410+125	Trail / Condition Unknown	N 6113580 E 684966	Crown	
T00384	(S4)410+112	Forestry Road / LGGR / R06152 01 (Retired)	N 6113572 E 684975	Crown	
W01591	(S4)409+770	Trib to Hautele Creek / S6 / RRZ = 0 RMZ = 20	N 6113284 E 685152	ILMB	
T00383	(S4)409+610	Trail / Condition Unknown	N 6113135 E 685209	Crown	
No.	STATION	DESCRIPTION	NAD 83 UTM ZONE 9	OWNER	

TABLE OF CROSSINGS

Prince Rupert
Gas Transmission Project

TransCanada
In business to deliver

PRINCE RUPERT GAS TRANSMISSION LTD.

PROPOSED 32m PIPELINE R/W FROM a-18-A, 93-N-1 TO d-67-H, 93-K-14 (S1), d-67-H TO c-68-G, 93-K-14 (S2 & S3) & FROM c-68-G, 93-K-14 TO a-68-D, 93-M-8 (S4) (SHEET CHAINAGE: 409+303 TO 413+332)

Unsurveyed Crown Land/Crown Land/Private Land, Cassiar District & Range 5 Coast District

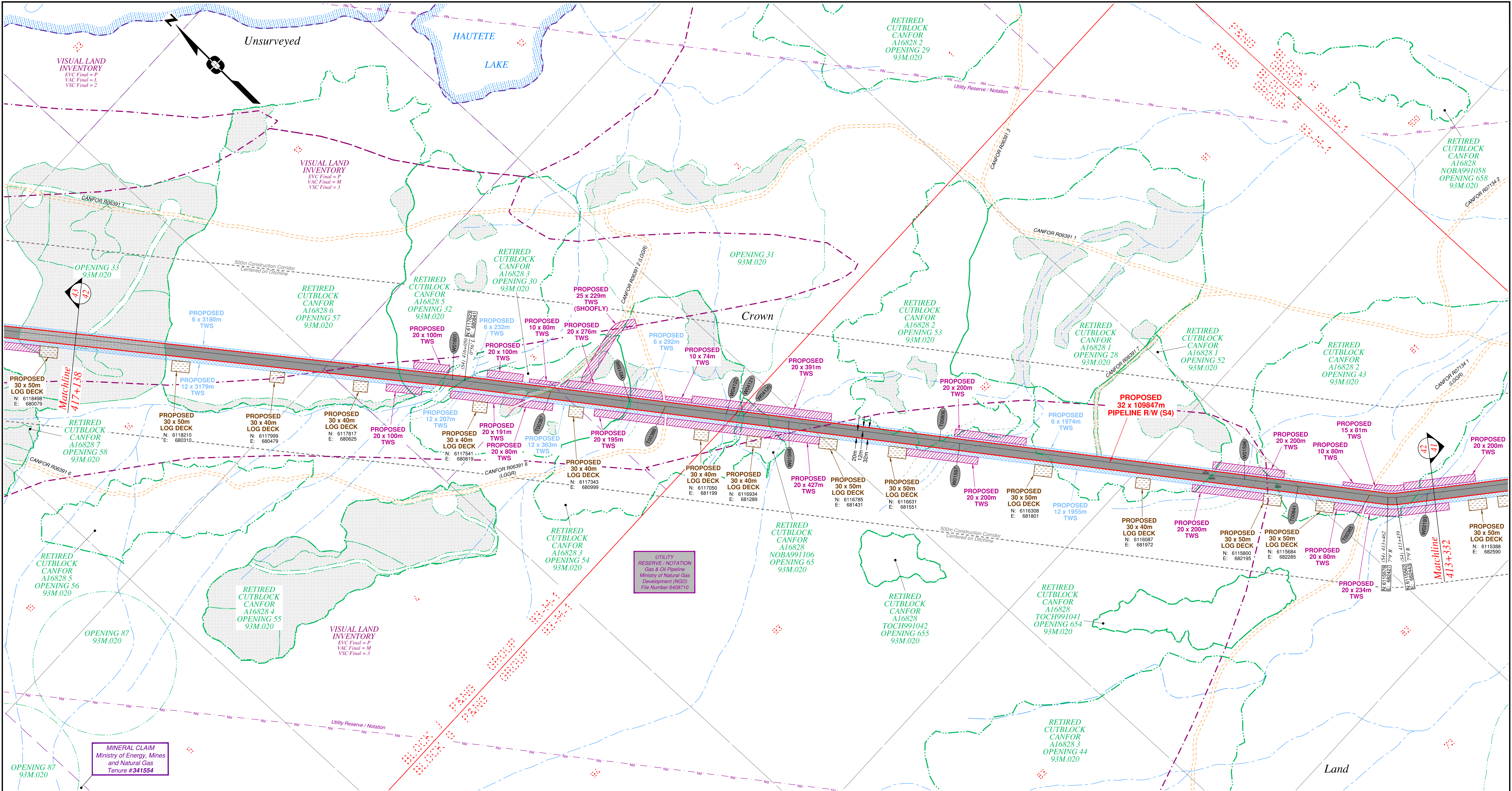
The intended plot size of this plan is 864mm in width by 560mm in height when plotted at a scale of 1: 5000 (use D size sheet)

BCGS: 93K.081, 82.83, 84.85, 86.87, 88.89, 91.94, 95.96, 97.99, 100 / 93M.010, 20.28, 29.30, 38 / 93N.001, 10

WSP: 130275CP03R1
AFC: 5005948
TCPL: 004776-09-ML-03-103
ePASS: 10050542

WSP Surveys (BC) Limited Partnership
Fort St John BC
(250) 787-0300

Sheet 41 of 51
REV. 1
1/14/2015 3:10:08 PM

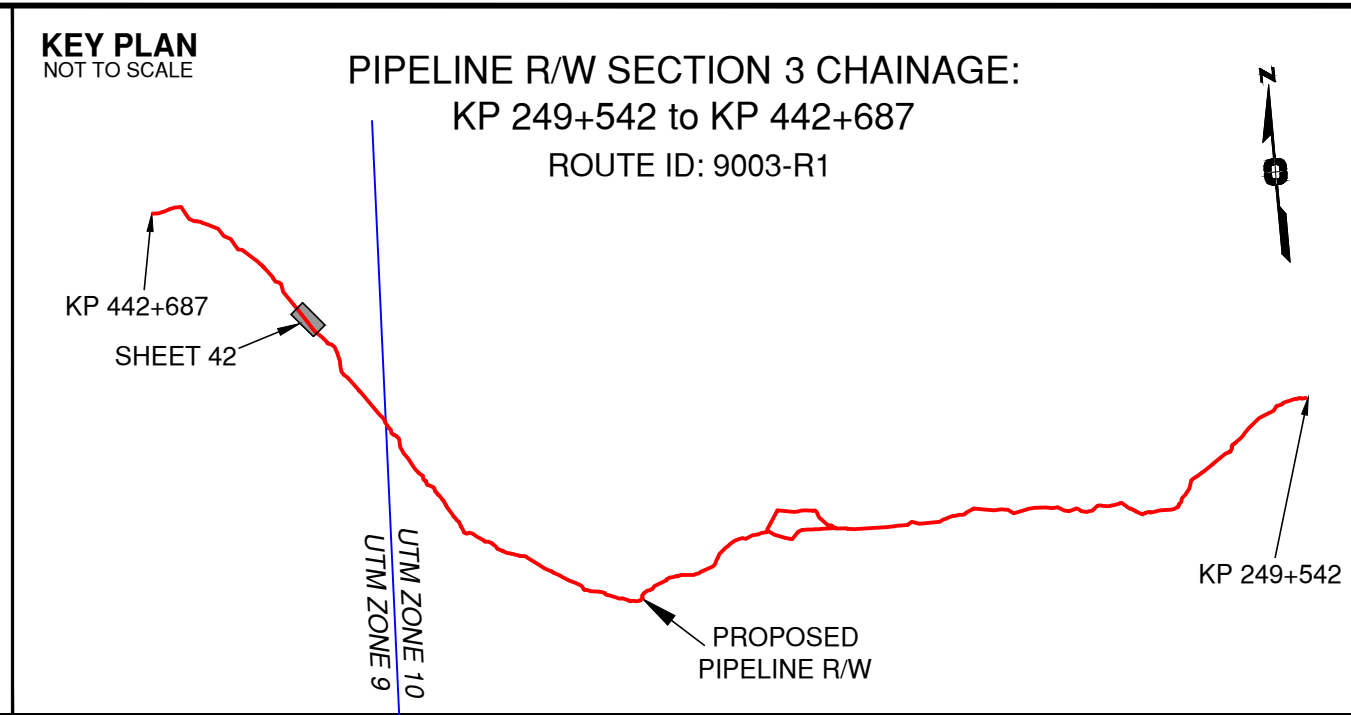


Rev	Revision Description	Date(Y/M/D)	By
0	Original Plan Prepared	2015/01/15	DC
1	Update P/L R/W (S4) Morrison Head - KP 436+715 to 440+846 Update Construction Corridor with Area Table & ePass Update Crossings, Scenery & Tenures	2015/01/14	DC

NOTES:

- Co-ordinates are NAD 83 Grid, UTM Zone 9 and Zone 10. Distances shown are in metres and decimals thereof. Chainages are two-dimensional and are on pipeline ditchline. Pipeline segment length derived from ditchline chainages.
- Fault Lines data has been provided from BGC Engineering Inc. Desktop Study dated December 20, 2013.
- Water crossing information has been provided by Stantec. Wetlands data has been provided by Stantec dated August 29, 2014. Freshwater Atlas wetlands outside of construction corridor have been removed from scenery.
- Cutblock data is confirmed using information from the Government of BC websites for Forest MapView and MapBC.
- This pipeline section is not within the Agricultural Land Reserve.
- Field Survey Completed December 15, 2014
- This plan represents the best information available at the time of survey. WSP Surveys and its employees take no responsibility for the location of any underground conduits, pipes, or other facilities whether shown on or omitted from this plan. All underground installations should be located by the respective authorities prior to construction.

LEGEND
Proposed Pipeline R/W shown thus:
Proposed Temp. Workspaces shown thus:
Proposed Log Decks & Storage Sites shown thus:
Right of Way shown thus:
Roads shown thus:
Highway shown thus:
Railway line shown thus:
Seismic line/trail shown thus:
Recreation Tenure shown thus:
Drainages shown thus:
Buried cable shown thus:
Overhead powerline shown thus:
Riparian Reserve Zone shown thus:
Riparian Management Zone shown thus:
Forest Cover Reserve shown thus:
Archaeological site shown thus:
Agricultural Land Reserve bdy shown thus:
Coal Tenure bdy shown thus:
Cutblock bdy shown thus:
Fence bdy shown thus:
Fish/Wildlife Reserve bdy shown thus:
Grazing Tenure bdy shown thus:
Mineral Claim bdy shown thus:
Tree Farm Licence shown thus:
Quarry Reserve bdy shown thus:
Ungulate Winter Range bdy shown thus:
Visual Land Inventory shown thus:
Watershed Reserve bdy shown thus:
Wind Tenure bdy shown thus:
Woodlot bdy shown thus:
Fault Line shown thus:
Misc Reserve/Notation bdy shown thus:
Misc Licence/Permit bdy shown thus:
Stantec Wetland / Classification shown thus:
Crossings shown thus:
Old Growth Management Area shown thus:
Residences shown thus:
Power Pole shown thus:
Culturally Modified Trees with Face shown thus:



APPROVED BY
PROJECT ENGINEER

No.	STATION	DESCRIPTION	OWNER
W01601	(S4)416+084	Trib to Haute Lake / S3 / RRZ = 20 RMZ = 20	ILMB
T00387	(S4)415+808	Forestry Road / LGGR / R06391 2	Canadian Forest Products Ltd
W01599	(S4)415+587	Trib to Haute Lake / S6 / RRZ = 0 RMZ = 20	ILMB
T00386	(S4)415+487	Forestry Road / LGGR / R06391 6	Canadian Forest Products Ltd
W04122	(S4)415+317	Water Course	ILMB
W04121	(S4)415+291	Water Course	ILMB
W04120	(S4)415+289	Water Course	ILMB
W01598	(S4)415+141	Trib to Haute Lake / S5 / RRZ = 0 RMZ = 30	ILMB
T00806	(S4)414+718	Trail / Condition Unknown	Crown
W01597	(S4)414+662	Trib to Haute Lake / S6 / RRZ = 20 RMZ = 20	ILMB
W01596	(S4)413+864	Trib to Haute Lake / S5 / RRZ = 0 RMZ = 30	ILMB
T00841	(S4)413+713	Trail / Condition Unknown	Crown
T00835	(S4)413+513	Forestry Road / LGGR / R07134 1	Canadian Forest Products Ltd
W02193	(S4)413+351	Trib to Haute Lake / S4 / RRZ = 0 RMZ = 30	ILMB
No.	STATION	DESCRIPTION	OWNER

TABLE OF CROSSINGS

Prince Rupert Gas Transmission Project

TransCanada
In business to deliver

PRINCE RUPERT GAS TRANSMISSION LTD.

PROPOSED 32m PIPELINE R/W FROM a-18-A, 93-N-1 TO d-67-H, 93-K-14 (S1), d-67-H TO c-68-G, 93-K-14 (S2 & S3) & FROM c-68-G, 93-K-14 TO a-68-D, 93-M-8 (S4) (SHEET CHAINAGE: 413+332 TO 417+138)

Unsurveyed Crown Land/Crown Land/Private Land, Cassiar District & Range 5 Coast District

The intended plot size of this plan is 864mm in width by 560mm in height when plotted at a scale of 1: 5000 (use D size sheet)

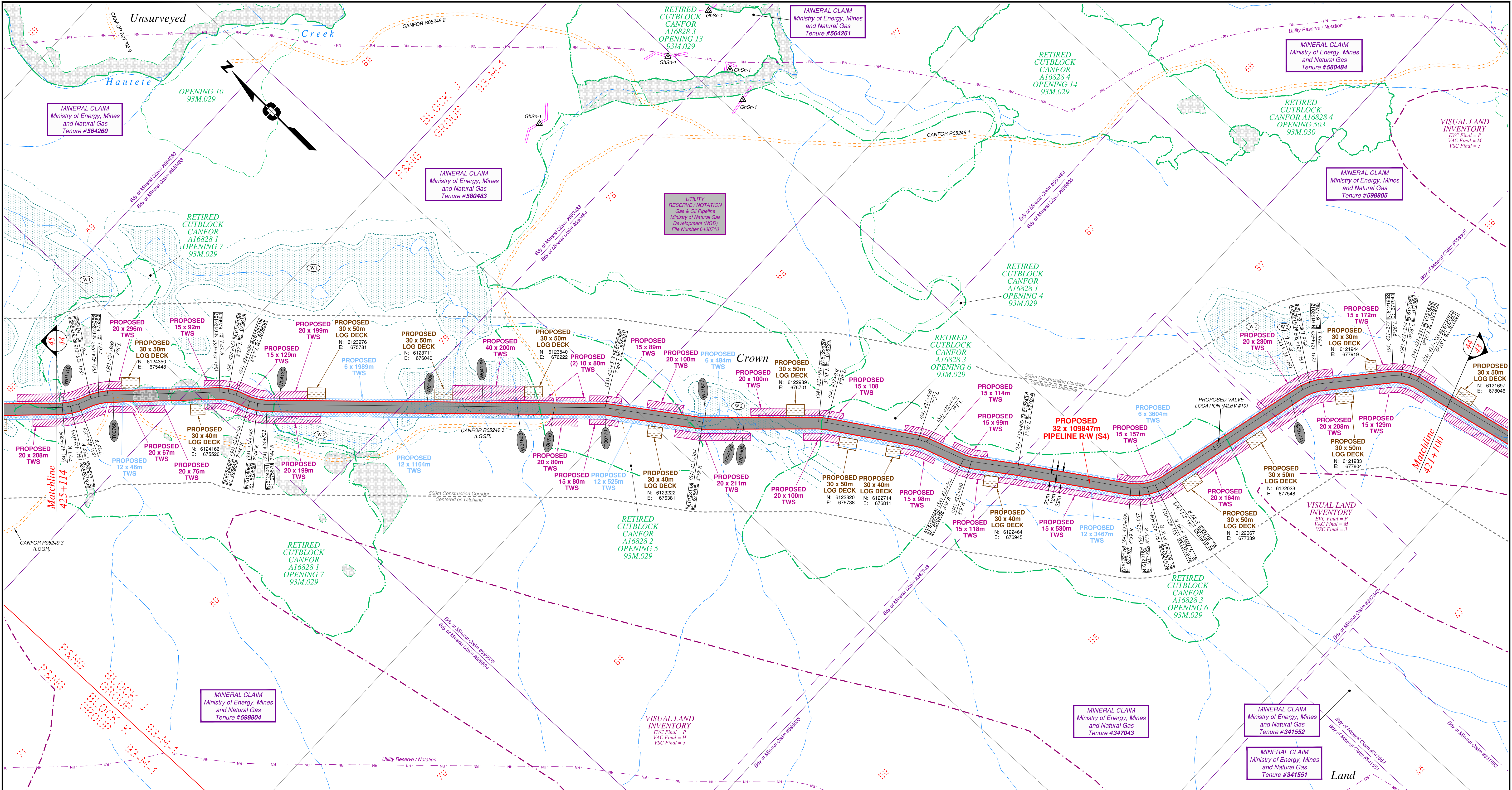
BCGS: 93K.081, 82.83.84, 85.86, 87.88, 89.91, 94.95, 96, 97, 99, 100 / 93M.010, 20.28, 29, 30, 38 / 93N.001, 10

Sheet 42 of 51

WSP Surveys (BC) Limited Partnership
Fort St John BC
(250) 787-0300

WSP: 130275CP03R1
AFE: 5005948
TCPL: 004776-09-ML-03-104
ePASS: 10050542

REV. 1

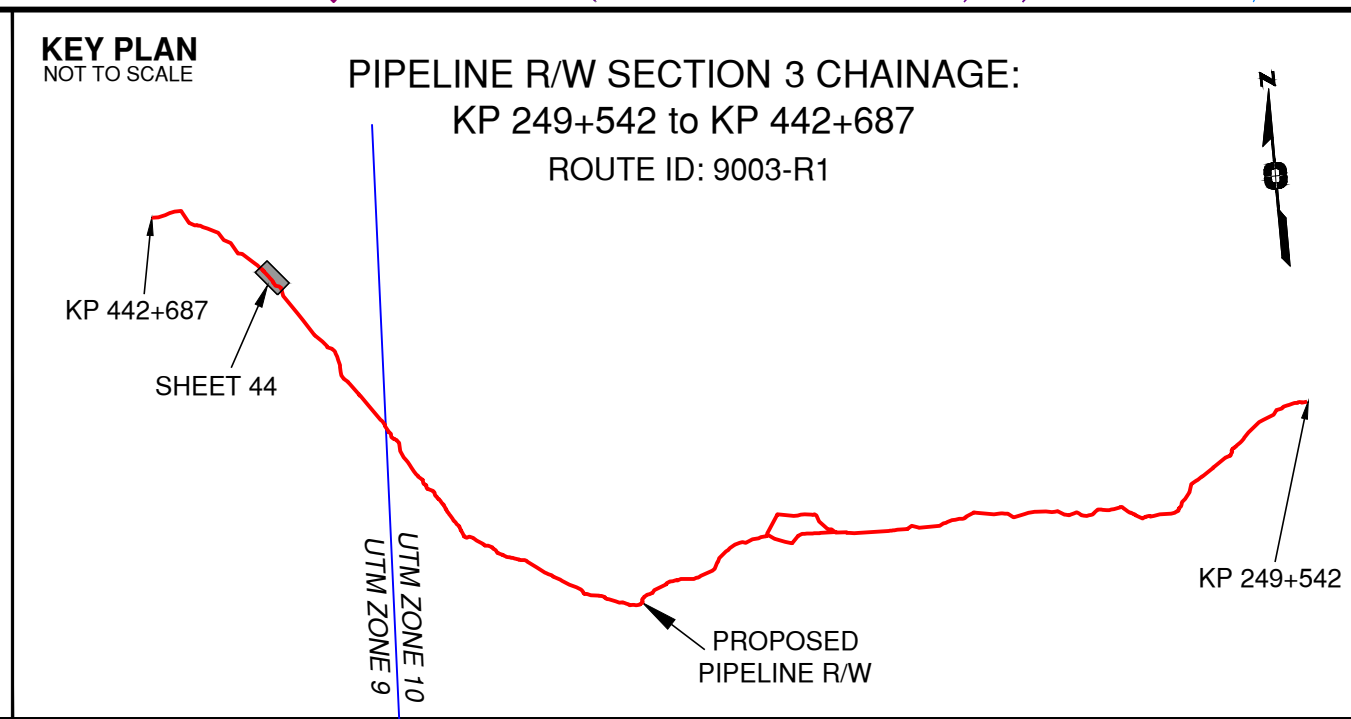


Rev	Revision Description	Date(Y/M/D)	By
0	Original Plan Prepared	2015/01/15	DC
1	Update P/L R/W (S4) Morrison Head - KP 436+715 to 440+846 Update Construction Corridor with Area Table & ePass Update Crossings, Scenery & Tenures	2015/01/14	DC

NOTES:

- Co-ordinates are NAD 83 Grid, UTM Zone 9 and Zone 10. Distances shown are in metres and decimals thereof. Chainages are two-dimensional and are on pipeline ditchline. Pipeline segment length derived from ditchline chainages.
- Fault Lines data has been provided from BGC Engineering Inc. Desktop Study dated December 20, 2013.
- Water crossing information has been provided by Stantec. Wetlands data has been provided by Stantec dated August 29, 2014. Freshwater Atlas wetlands outside of construction corridor have been removed from scenery.
- Cutblock data is confirmed using information from the Government of BC websites for Forest MapView and MapBC.
- This pipeline section is not within the Agricultural Land Reserve.
- Field Survey Completed December 15, 2014
- This plan represents the best information available at the time of survey. WSP Surveys and its employees take no responsibility for the location of any underground conduits, pipes, or other facilities whether shown on or omitted from this plan. All underground installations should be located by the respective authorities prior to construction.

LEGEND
Proposed Pipeline R/W shown thus:
Proposed Temp. Workspaces shown thus:
Proposed Log Decks & Storage Sites shown thus:
Right of Way shown thus:
Roads shown thus:
Highway shown thus:
Railway line shown thus:
Seismic line/trail shown thus:
Recreation Tenure shown thus:
Drainages shown thus:
Buried cable shown thus:
Buried pipe shown thus:
Overhead powerline shown thus:
Riparian Reserve Zone shown thus:
Riparian Management Zone shown thus:
Forest Cover Reserve shown thus:
Archaeological site shown thus:
Agricultural Land Reserve bdy shown thus:
Coal Tenure bdy shown thus:
Cutblock bdy shown thus:
Fence bdy shown thus:
Fish/Wildlife Reserve bdy shown thus:
Grazing Tenure bdy shown thus:
Mineral Claim bdy shown thus:
Tree Farm Licence shown thus:
Quarry Reserve bdy shown thus:
Ungulate Winter Range bdy shown thus:
Visual Land Inventory shown thus:
Watershed Reserve bdy shown thus:
Wind Tenure bdy shown thus:
Woodlot bdy shown thus:
Fault Line shown thus:
Misc Reserve/Notation bdy shown thus:
Misc Licence/Permit bdy shown thus:
Stantec Wetland / Classification shown thus:
Crossings shown thus:
Old Growth Management Area shown thus:
Residences shown thus:
Power Pole shown thus:
Culturally Modified Trees with Face shown thus:



APPROVED BY _____

PROJECT ENGINEER _____

No.	STATION	DESCRIPTION	NAD 83 UTM ZONE	OWNER
W01610	(S4)425+099	Trib to Hautele Creek / S6 / RRZ = 0 RMZ = 20	N 6124437 E 675264	ILMB
T00768	(S4)424+953	Trail / Condition Unknown	N 6124361 E 675388	Crown
W04130	(S4)424+486	Water Course	N 6124016 E 675695	ILMB
W01609	(S4)424+075	Trib to Hautele Creek / No visible channel	N 6123722 E 675983	ILMB
W04129	(S4)423+917	Water Course	N 6123610 E 676093	ILMB
W01608	(S4)423+622	Trib to Hautele Creek / No visible channel	N 6123542 E 676160	ILMB
T00769	(S4)423+719	Forestry Road / LGGR / R05249 3	N 6123469 E 676232	Canadian Forest Products Ltd
T00770	(S4)423+579	Trail / Condition Unknown	N 6123388 E 676331	Crown
W01607	(S4)423+294	Trib to Hautele Creek / S4 / RRZ = 0 RMZ = 30	N 6123141 E 676502	ILMB
W04128	(S4)423+201	Water Course	N 6123076 E 676567	ILMB
W01606	(S4)423+189	Trib to Hautele Creek / S3 / RRZ = 20 RMZ = 20	N 6123067 E 676576	ILMB
W01605	(S4)421+573	Trib to Hautele Creek / Non-classified drainage	N 6122040 E 677699	ILMB
No.	STATION	DESCRIPTION	NAD 83 UTM ZONE	OWNER

TABLE OF CROSSINGS

Prince Rupert
Gas Transmission Project

PRINCE RUPERT GAS TRANSMISSION LTD.

PROPOSED 32m PIPELINE R/W FROM a-18-A, 93-N-1 TO d-67-H, 93-K-14 (S1), d-67-H TO c-68-G, 93-K-14 (S2 & S3) & FROM c-68-G, 93-K-14 TO a-68-D, 93-M-8 (S4) (SHEET CHAINAGE: 421+100 TO 425+114)

Unsurveyed Crown Land/Private Land, Cassiar District & Range 5 Coast District

The intended plot size of this plan is 864mm in width by 560mm in height when plotted at a scale of 1: 5000 (use D size sheet)

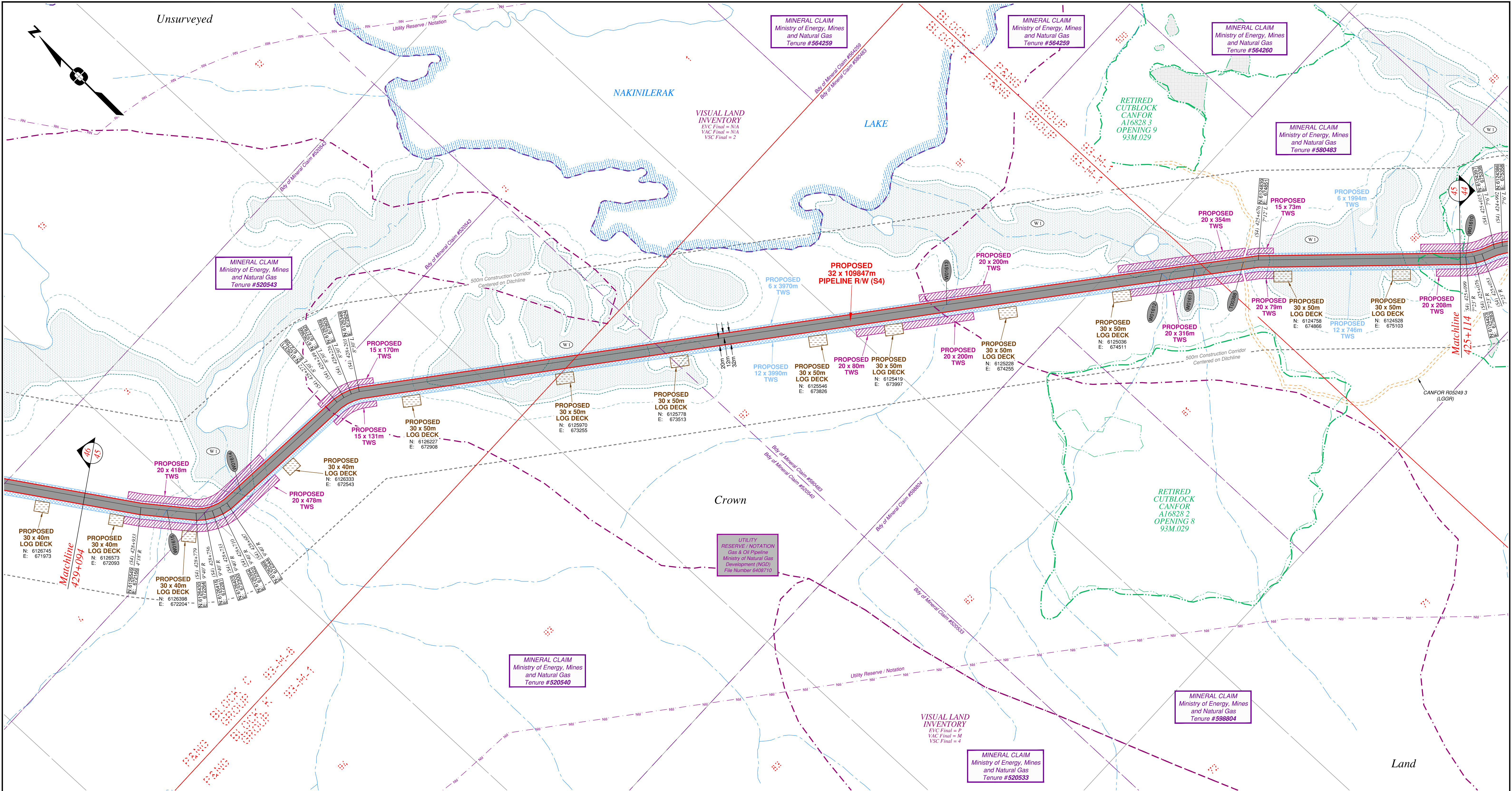
BCGS: 93K.081, 82.83, 84, 85, 86, 87, 88, 89, 91, 94, 95, 96, 97, 99, 100 / 93M.010, 20, 28, 29, 30, 38 / 93N.001, 10

Sheet 44 of 51

WSP Surveys (BC) Limited Partnership
Fort St John BC
(250) 787-0300

WSP: 130275CP03R1
AFE: 5005948
TCPL: 004776-09-ML-03-106
ePASS: 10050542

REV. 1

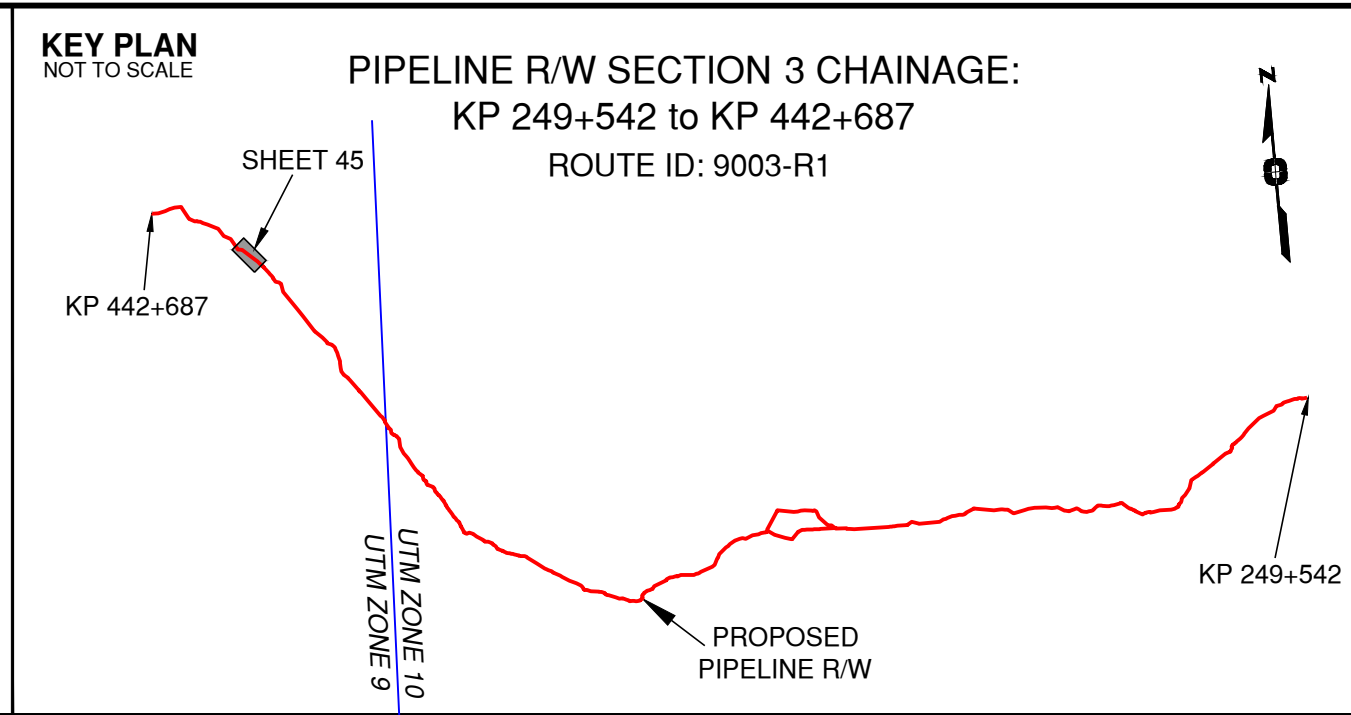


Rev	Revision Description	Date(Y/M/D)	By
0	Original Plan Prepared	2015/01/15	DC
1	Update P/L R/W (S4) Morrison Head - KP 436+715 to 440+846 Update Construction Corridor with Area Table & ePass Update Crossings, Scenery & Tenures	2015/01/14	DC

NOTES:

- Co-ordinates are NAD 83 Grid, UTM Zone 9 and Zone 10. Distances shown are in metres and decimals thereof. Chainages are two-dimensional and are on pipeline ditchline. Pipeline segment length derived from ditchline chainages.
- Fault Lines data has been provided from BGC Engineering Inc. Desktop Study dated December 20, 2013.
- Water crossing information has been provided by Stantec. Wetlands data has been provided by Stantec dated August 29, 2014. Freshwater Atlas wetlands outside of construction corridor have been removed from scenery.
- Cutblock data is confirmed using information from the Government of BC websites for Forest MapView and MapBC.
- This pipeline section is not within the Agricultural Land Reserve.
- Field Survey Completed December 15, 2014
- This plan represents the best information available at the time of survey. WSP Surveys and its employees take no responsibility for the location of any underground conduits, pipes, or other facilities whether shown on or omitted from this plan. All underground installations should be located by the respective authorities prior to construction.

LEGEND
Proposed Pipeline R/W shown thus:
Proposed Temp. Workspaces shown thus:
Proposed Log Decks & Storage Sites shown thus:
Right of Way shown thus:
Roads shown thus:
Highway shown thus:
Railway line shown thus:
Seismic line/trail shown thus:
Recreation Tenure shown thus:
Drainages shown thus:
Buried cable shown thus:
Buried pipe shown thus:
Overhead powerline shown thus:
Riparian Reserve Zone shown thus:
Riparian Management Zone shown thus:
Forest Cover Reserve shown thus:
Archaeological site shown thus:
Agricultural Land Reserve bdy shown thus:
Coal Tenure bdy shown thus:
Cutblock bdy shown thus:
Fence bdy shown thus:
Fish/Wildlife Reserve bdy shown thus:
Grazing Tenure bdy shown thus:
Mineral Claim bdy shown thus:
Tree Farm Licence shown thus:
Quarry Reserve bdy shown thus:
Ungulate Winter Range bdy shown thus:
Visual Land Inventory shown thus:
Watershed Reserve bdy shown thus:
Wind Tenure bdy shown thus:
Woodlot bdy shown thus:
Fault Line shown thus:
Misc Reserve/Notation bdy shown thus:
Misc Licence/Permit bdy shown thus:
Crossings shown thus:
Old Growth Management Area shown thus:
Residences shown thus:
Culturally Modified Trees with Face shown thus:



APPROVED BY _____

PROJECT ENGINEER _____

No.	STATION	DESCRIPTION	No.	STATION	DESCRIPTION
W01615	(S4)428+860	Trib to Nakinilerak Lake / S6 / RRZ = 0 RMZ = 20	N 6126493 E 672212	ILMB	
W01614	(S4)428+636	Trib to Nakinilerak Lake / S4 / RRZ = 0 RMZ = 30	N 6126387 E 672396	ILMB	
W01613	(S4)426+552	Trib to Nakinilerak Lake / Non-classified drainage	N 6126364 E 674150	ILMB	
W01612	(S4)425+947	Trib to Nakinilerak Lake / Non-classified drainage	N 6126002 E 674634	ILMB	
W01611	(S4)425+855	Trib to Nakinilerak Lake / S4 / RRZ = 0 RMZ = 30	N 6124947 E 674708	ILMB	
T00388	(S4)425+718	Forestry Road / LGGR / R05249 3	N 6124864 E 674817	Canadian Forest Products Ltd	
No.	STATION	DESCRIPTION	NAD 83 UTM ZONE	9	OWNER

TABLE OF CROSSINGS

Prince Rupert Gas Transmission Project

PRINCE RUPERT GAS TRANSMISSION LTD.

PROPOSED 32m PIPELINE R/W FROM a-18-A, 93-N-1 TO d-67-H, 93-K-14 (S1), d-67-H TO c-68-G, 93-K-14 (S2 & S3) & FROM c-68-G, 93-K-14 TO a-68-D, 93-M-8 (S4) (SHEET CHAINAGE: 425+114 TO 429+094)

Unsurveyed Crown Land/Crown Land/Private Land, Cassiar District & Range 5 Coast District

The intended plot size of this plan is 864mm in width by 560mm in height when plotted at a scale of 1: 5000 (use D size sheet)

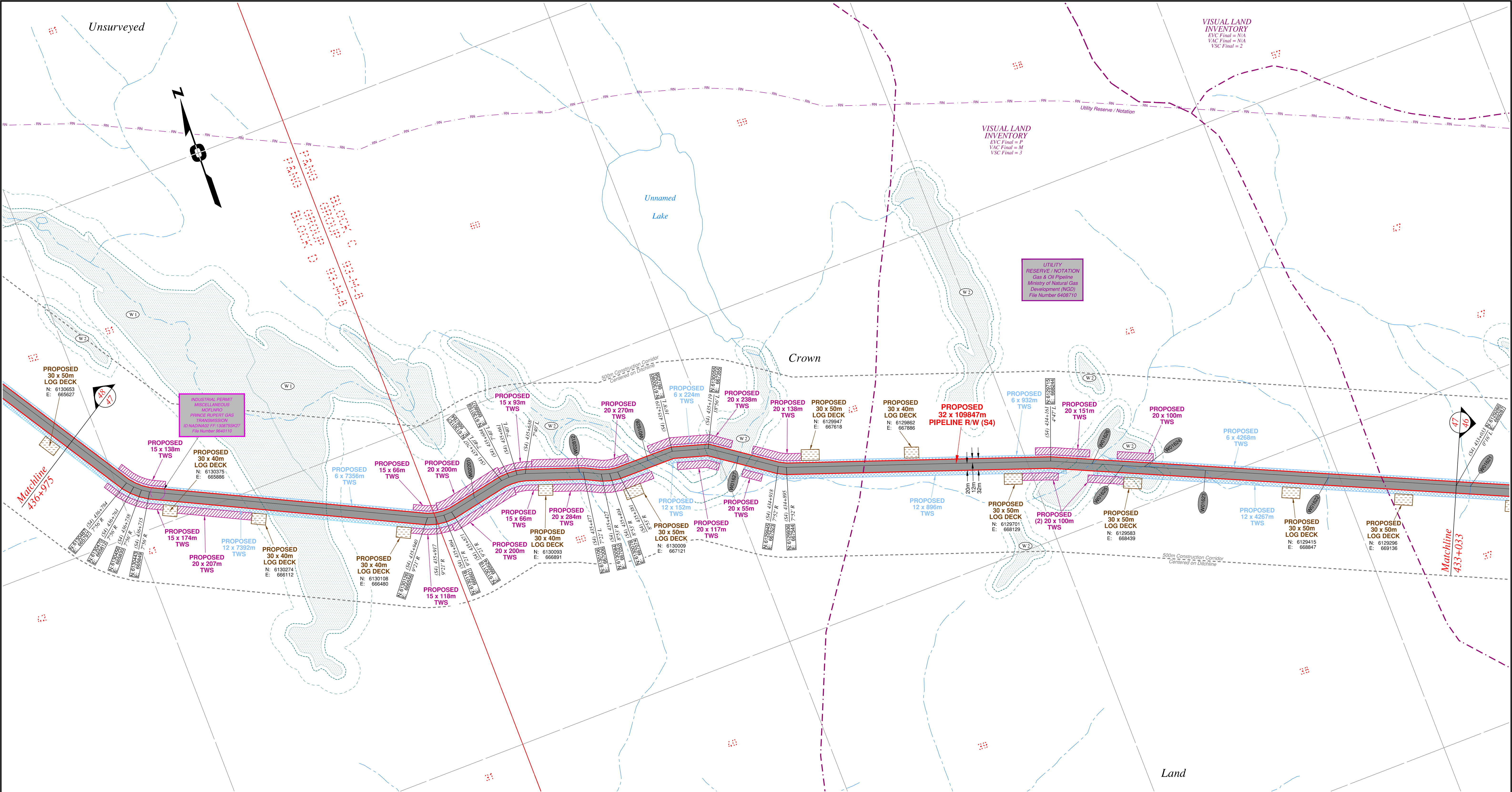
BCGS: 93K.081.82.83.84.85.86.87.88.89.91.94.95.96.97.99.100 / 93M.010.20.28.29.30.38 / 93N.001.10

Sheet 45 of 51

WSP Surveys (BC) Limited Partnership
Fort St John BC
(250) 787-0300

WSP: 130275CP03R1
AFCE: 5005948
TCPL: 004776-09-ML-03-107
ePASS: 10050542

REV. 1

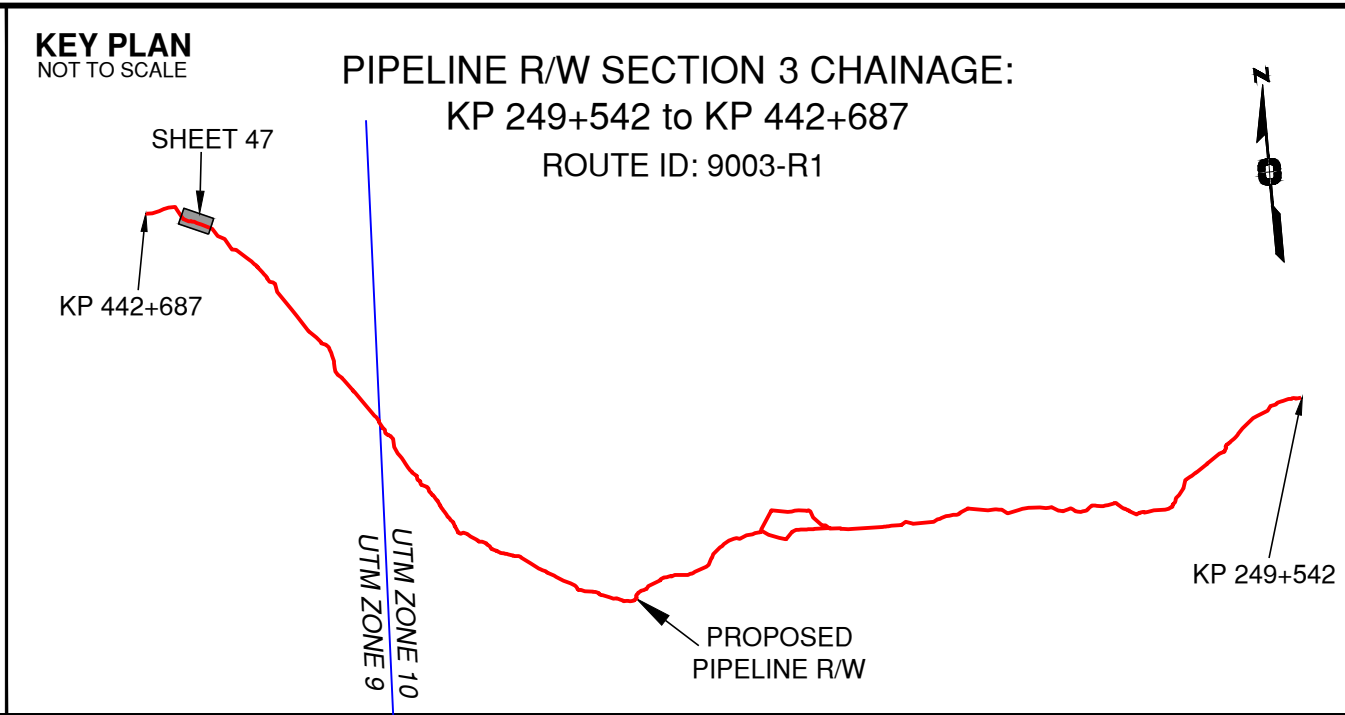


Rev	Revision Description	Date(Y/M/D)	By
0	Original Plan Prepared	2015/01/15	DC
1	Update P/L R/W (S4) Morrison Head - KP 436+715 to 440+846 Update Construction Corridor with Area Table & ePass Update Crossings, Scenery & Tenures	2015/01/14	DC

NOTES:

- Co-ordinates are NAD 83 Grid. UTM Zone 9 and Zone 10. Distances shown are in metres and decimals thereof. Chainages are two-dimensional and are on pipeline ditchline. Pipeline segment length derived from ditchline chainages.
- Fault Lines data has been provided from BGC Engineering Inc. Desktop Study dated December 20, 2013.
- Water crossing information has been provided by Stantec. Wetlands data has been provided by Stantec dated August 29, 2014. Freshwater Atlas wetlands outside of construction corridor have been removed from scenery.
- Cutblock data is confirmed using information from the Government of BC websites for Forest MapView and MapSC.
- This pipeline section is not within the Agricultural Land Reserve.
- Field Survey Completed December 15, 2014
- This plan represents the best information available at the time of survey. WSP Surveys and its employees take no responsibility for the location of any underground conduits, pipes, or other facilities whether shown on or omitted from this plan. All underground installations should be located by the respective authorities prior to construction.

LEGEND
Proposed Pipeline R/W shown thus:
Proposed Temp. Workspaces shown thus:
Proposed Log Decks & Storage Sites shown thus:
Right of Way shown thus:
Roads shown thus:
Highway shown thus:
Railway line shown thus:
Seismic line/trail shown thus:
Recreation Tenure shown thus:
Drainages shown thus:
Buried cable shown thus:
Buried pipe shown thus:
Overhead powerline shown thus:
Riparian Reserve Zone shown thus:
Riparian Management Zone shown thus:
Forest Cover Reserve shown thus:
Archaeological site shown thus:
Agricultural Land Reserve bdy shown thus:
Coal Tenure bdy shown thus:
Cutblock bdy shown thus:
Fence bdy shown thus:
Fish/Wildlife Reserve bdy shown thus:
Grazing Tenure bdy shown thus:
Mineral Claim bdy shown thus:
Tree Farm Licence shown thus:
Quarry Reserve bdy shown thus:
Ungulate Winter Range bdy shown thus:
Visual Land Inventory shown thus:
Watershed Reserve bdy shown thus:
Wind Tenure bdy shown thus:
Woodlot bdy shown thus:
Fault Line shown thus:
Misc Reserve/Notation bdy shown thus:
Misc Licence/Permit bdy shown thus:
Stantec Wetland / Classification shown thus:
Crossings shown thus:
Old Growth Management Area shown thus:
Residences shown thus:
Power Pole shown thus:
Culturally Modified Trees with Face shown thus:



APPROVED BY
PROJECT ENGINEER

No.	STATION	DESCRIPTION	UTM	UTM	UTM	UTM	UTM	UTM	UTM
W02201	(S4)435+797	Trib to Tahlo Creek / Non-classified drainage	N 6130136	E 666897	ILMB				
W02812	(S4)435+487	Trib to Tahlo Creek / S4 / RRZ = 30	N 6130109	E 666996	ILMB				
W01628	(S4)435+291	Trib to Tahlo Creek / S3 / RRZ = 20	N 6130078	E 667106	ILMB				
W01627	(S4)435+032	Trib to Tahlo Creek / S2 / RRZ = 30	N 6130008	E 667428	ILMB				
W01626	(S4)434+046	Trib to Tahlo Creek / S3 / RRZ = 20	N 6129671	E 668350	ILMB				
W01625	(S4)433+960	Trib to Tahlo Creek / Non-classified drainage	N 6129638	E 668430	ILMB				
W01624	(S4)433+901	Trib to Tahlo Creek / No visible channel	N 6129616	E 668485	ILMB				
W01623	(S4)433+731	Trib to Tahlo Creek / No visible channel	N 6129551	E 668642	ILMB				
W01622	(S4)433+389	Trib to Tahlo Creek / No visible channel	N 6129421	E 668958	ILMB				
No.	STATION	DESCRIPTION	NAD 83 UTM	UTM	UTM	UTM	UTM	UTM	UTM

Prince Rupert Gas Transmission Project

TransCanada

In business to deliver

PRINCE RUPERT GAS TRANSMISSION LTD.

PROPOSED 32m PIPELINE R/W FROM a-18-A, 93-N-1 TO d-67-H, 93-K-14 (S1), d-67-H TO c-68-G, 93-K-14 (S2 & S3) & FROM c-68-G, 93-K-14 TO a-68-D, 93-M-8 (S4) (SHEET CHAINAGE: 433+033 TO 436+975)

Unsurveyed Crown Land/Crown Land/Private Land, Cassiar District & Range 5 Coast District

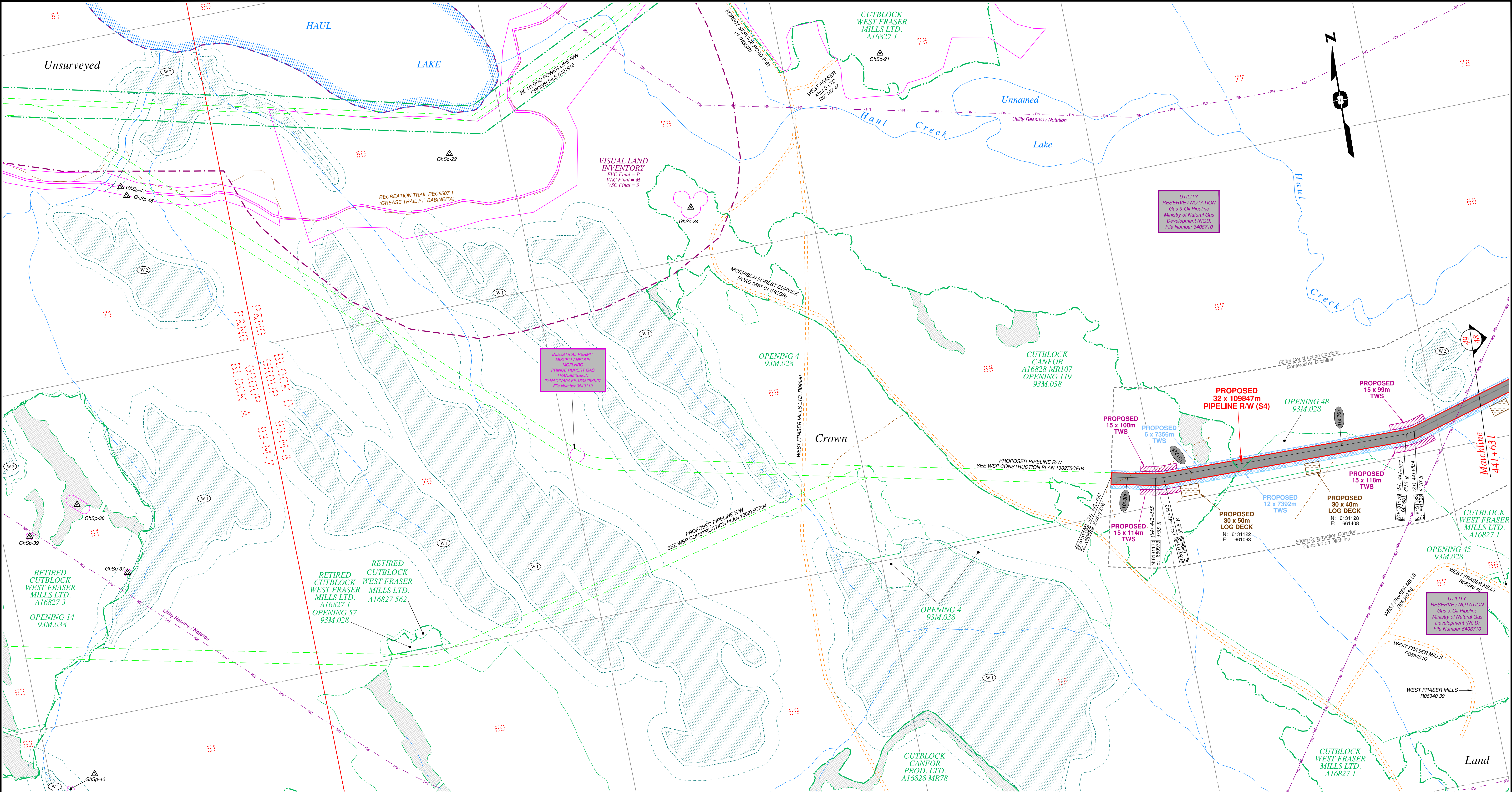
The intended plot size of this plan is 864mm in width by 560mm in height when plotted at a scale of 1: 5000 (use D size sheet)

BCGS: 93K.081, 82.83, 84, 85, 86, 87, 88, 89, 91, 94, 95, 96, 97, 99, 100 / 93M.010, 20, 28, 29, 30, 38 / 93N.001, 10

WSP Surveys (BC) Limited Partnership
Fort St John BC
(250) 787-0300

WSP: 130275CP03R1
AFE: 5005948
TCPL: 004776-09-ML-03-109
ePASS: 10050542

REV. 1

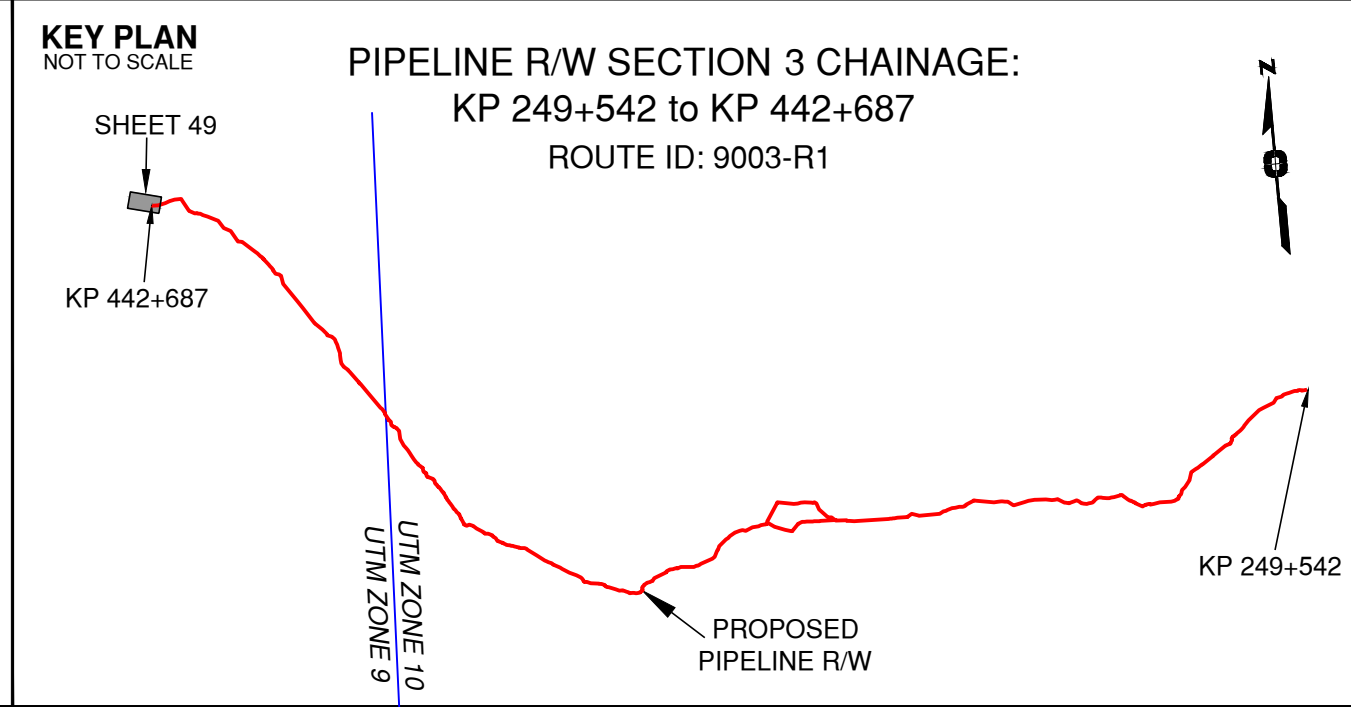


Rev	Revision Description	Date(Y/M/D)	By
0	Original Plan Prepared	2015/01/15	DC
1	Update P/L R/W (S4) Morrison Head - KP 436+715 to 440+846 Update Construction Corridor with Area Table & ePass Update Crossings, Scenery & Tenures	2015/01/14	DC

NOTES:

- Co-ordinates are NAD 83 Grid, UTM Zone 9 and Zone 10. Distances shown are in metres and decimals thereof. Chainages are two-dimensional and are on pipeline ditchline. Pipeline segment length derived from ditchline chainages.
- Fault Lines data has been provided from BGC Engineering Inc. Desktop Study dated December 20, 2013.
- Water crossing information has been provided by Stantec. Wetlands data has been provided by Stantec dated August 29, 2014. Freshwater Atlas wetlands outside of construction corridor have been removed from scenery.
- Cutblock data is confirmed using information from the Government of BC websites for Forest MapView and MapBC.
- This pipeline section is not within the Agricultural Land Reserve.
- Field Survey Completed December 15, 2014
- This plan represents the best information available at the time of survey. WSP Surveys and its employees take no responsibility for the location of any underground conduits, pipes, or other facilities whether shown on or omitted from this plan. All underground installations should be located by the respective authorities prior to construction.

LEGEND
Proposed Pipeline R/W shown thus:
Proposed Temp. Workspaces shown thus:
Proposed Log Decks & Storage Sites shown thus:
Right of Way shown thus:
Roads shown thus:
Highway shown thus:
Railway line shown thus:
Seismic line/trail shown thus:
Recreation Tenure shown thus:
Drainages shown thus:
Buried cable shown thus:
Buried pipe shown thus:
Overhead powerline shown thus:
Riparian Reserve Zone shown thus:
Riparian Management Zone shown thus:
Forest Cover Reserve shown thus:
Archaeological site shown thus:
Agricultural Land Reserve bdy shown thus:
Coal Tenure bdy shown thus:
Cutblock bdy shown thus:
Fence bdy shown thus:
Fish/Wildlife Reserve bdy shown thus:
Grazing Tenure bdy shown thus:
Mineral Claim bdy shown thus:
Tree Farm Licence shown thus:
Quarry Reserve bdy shown thus:
Ungulate Winter Range bdy shown thus:
Visual Land Inventory shown thus:
Watershed Reserve bdy shown thus:
Wind Tenure bdy shown thus:
Woodlot bdy shown thus:
Fault Line shown thus:
Misc Reserve/Notation bdy shown thus:
Misc Licence/Permit bdy shown thus:
Stantec Wetland / Classification shown thus:
Crossings shown thus:
Old Growth Management Area shown thus:
Residences shown thus:
Power Pole shown thus:
Culturally Modified Trees with Face shown thus:



APPROVED BY _____

PROJECT ENGINEER _____

No.	STATION	DESCRIPTION	OWNER
T00389	(S4)442+641	Trail / Condition Unknown	Crown
T01226	(S4)442+463	Trail / Condition Unknown	Crown
T00767	(S4)442+040	Trail / Condition Unknown	Crown
No.	STATION	DESCRIPTION	OWNER
			NAD 83 UTM ZONE 9

TABLE OF CROSSINGS

Prince Rupert Gas Transmission Project

TransCanada
In business to deliver

PRINCE RUPERT GAS TRANSMISSION LTD.

PROPOSED 32m PIPELINE R/W FROM a-18-A, 93-N-1 TO d-67-H, 93-K-14 (S1), d-67-H TO c-68-G, 93-K-14 (S2 & S3) & FROM c-68-G, 93-K-14 TO a-68-D, 93-M-8 (S4) (SHEET CHAINAGE: 441+631 TO 442+687)

Unsurveyed Crown Land/Crown Land/Private Land, Cassiar District & Range 5 Coast District

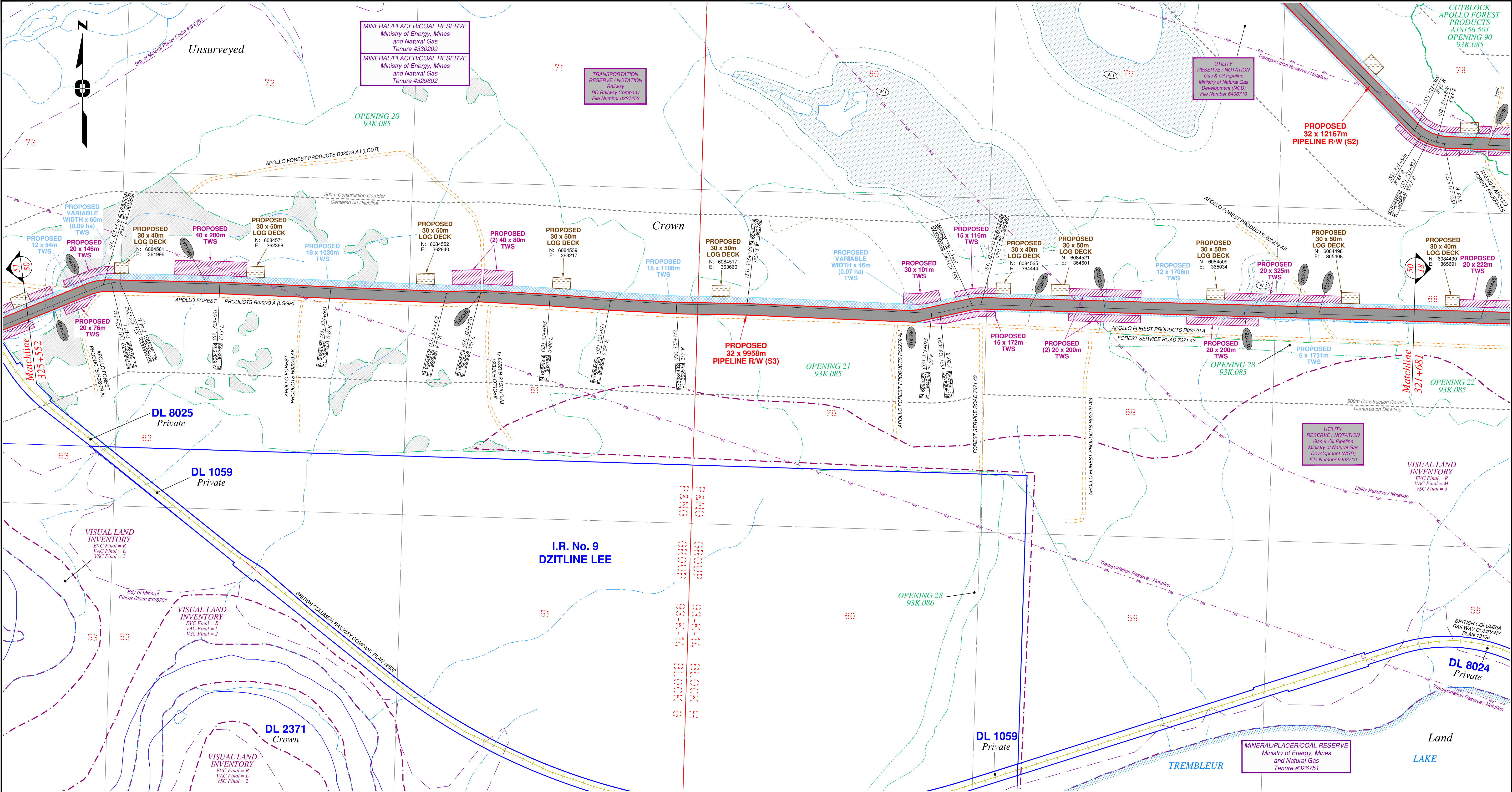
The intended plot size of this plan is 864mm in width by 560mm in height when plotted at a scale of 1: 5000 (use D size sheet)

BCGS: 93K.081, 82.83.84, 85.86.87, 88.89.91, 94.95.96, 97.99.100 / 93M.010, 20.28, 29.30, 38 / 93N.001, 10

WSP Surveys (BC) Limited Partnership
Fort St John BC
(250) 787-0300

WSP: 130275CP03R1
AFE: 5005948
TCPL: 004776-09-ML-03-111
ePASS: 10050542

REV. 1



Rev	Revision Description	Date(Y/M/D)	By										
0	Original Plan Prepared	2014/09/17	DC										
1	Update P/L R/W (S4), Morrison Head - KP 436+715 to 440+846 Update Construction Corridor with Area Table & ePass Update Crossings, Scenery & Tenures	2015/01/14	DC										
NOTES:													
- Co-ordinates are NAD 83 Grid, UTM Zone 9 and Zone 10. Distances shown are in metres and decimals thereof. Chainages are two-dimensional and are on pipeline													
- Fault Lines data has been provided from BGC Engineering Inc. Desktop Study dated December 20, 2013.													
- Water crossing information has been provided by Stantec. Wetlands data has been provided by Stantec. Zoned Freshwater Atlas wetlands outside of construction corridor have been removed from scenery.													
- Cutblock data is confirmed using information from the Government of BC websites for Forest MapView and MapBC.													
- This pipeline section is not within the Agricultural Land Reserve.													
- Field Survey Completed December 15, 2014													
- This plan represents the best information available at the time of survey. WSP Surveys and its employees take no responsibility for the location of any underground conduits, pipes, or other facilities whether shown on or omitted from this plan. All underground installations should be located by the respective authorities prior to construction.													

LEGEND	
Proposed Pipeline R/W shown thus:	Fish/Wildlife Reserve bdy shown thus:
Proposed Temp. Workspaces shown thus:	Grazing Tenure bdy shown thus:
Proposed Log Decks & Storage Sites shown thus:	Mineral Claim bdy shown thus:
Right of Way shown thus:	Tree Farm Licence shown thus:
Roads shown thus:	Quarry Reserve bdy shown thus:
Highway shown thus:	Ungulate Winter Range bdy shown thus:
Railway line shown thus:	Visual Land Inventory shown thus:
Seismic line/trail shown thus:	Watershed Reserve bdy shown thus:
Recreation Tenure shown thus:	Wind Tenure bdy shown thus:
Drainages shown thus:	Woodlot bdy shown thus:
Buried cable shown thus:	Fault Line shown thus:
Buried pipe shown thus:	Misc Reserve/Notation bdy shown thus:
Overhead powerline shown thus:	Misc Licence/Permit bdy shown thus:
Stantec Wetland / Classification shown thus:	Crossings shown thus:
Riparian Management Zone shown thus:	Old Growth Management Area shown thus:
Forest Cover Reserve shown thus:	Residences shown thus:
Archaeological site shown thus:	Power Pole shown thus:
Agricultural Land Reserve bdy shown thus:	Culturally Modified Trees with Face shown thus:
Coal Tenure bdy shown thus:	
Cutblock bdy shown thus:	
Fence bdy shown thus:	

KEY PLAN	
NOT TO SCALE	
PIPELINE R/W SECTION 3 CHAINAGE: KP 249+542 to KP 442+687 ROUTE ID: 9003-R1	
APPROVED BY	
PROJECT ENGINEER	
SHEET 50	
UTM ZONE 9	
UTM ZONE 10	
PROPOSED PIPELINE R/W	
KP 442+687	
KP 249+542	

TABLE OF CROSSINGS				
W01449	(S3)325+477 Tributary to Middle River / S6 / RRZ = 0 RMZ = 20	N 6084479 E 361805	ILMB	
T00296	(S3)325+376 Forestry Road / LGGR / R02279 A	N 6084517 E 361898	Apollo Forest Products Ltd.	
W01448	(S3)325+038 Tributary to Middle River / Non-classified drainage	N 6084539 E 362232	ILMB	
T00295	(S3)324+273 Forestry Road / LGGR / R02279 AJ	N 6084515 E 362296	Apollo Forest Products Ltd.	
T00294	(S3)323+081 Trail / Condition Unknown	N 6084459 E 364187	Crown	
T00293	(S3)322+747 Trail / Condition Unknown	N 6084477 E 364187	Crown	
W02786	(S3)322+539 Tributary to Middle River / Non-classified drainage	N 6084471 E 364726	ILMB	
W02787	(S3)322+152 Tributary to Middle River / Non-classified drainage	N 6084460 E 365114	ILMB	
W02788	(S3)322+008 Tributary to Middle River / Non-classified drainage	N 6084456 E 365257	ILMB	
T01203	(S3)321+946 Forestry Road / LGGR / R02279 AF	N 6084454 E 365320	Apollo Forest Products Ltd.	
No.	STATION	DESCRIPTION	NAD 83 UTM ZONE 10	OWNER

Prince Rupert Gas Transmission Project

TransCanada
In business to deliver

PRINCE RUPERT GAS TRANSMISSION LTD.

PROPOSED 32m PIPELINE R/W FROM a-18-A, 93-N-1 TO d-67-H, 93-K-14 (S1), d-67-H TO c-68-G, 93-K-14 (S2 & S3) & FROM c-68-G, 93-K-14 TO a-68-D, 93-M-8 (S4) (SHEET CHAINAGE: 321+681 TO 325+552)

Unsurveyed Crown Land/Crown Land/Private Land, Cassiar District & Range 5 Coast District

The intended plot size of this plan is 864mm in width by 560mm in height when plotted at a scale of 1: 5000 (use D size sheet)

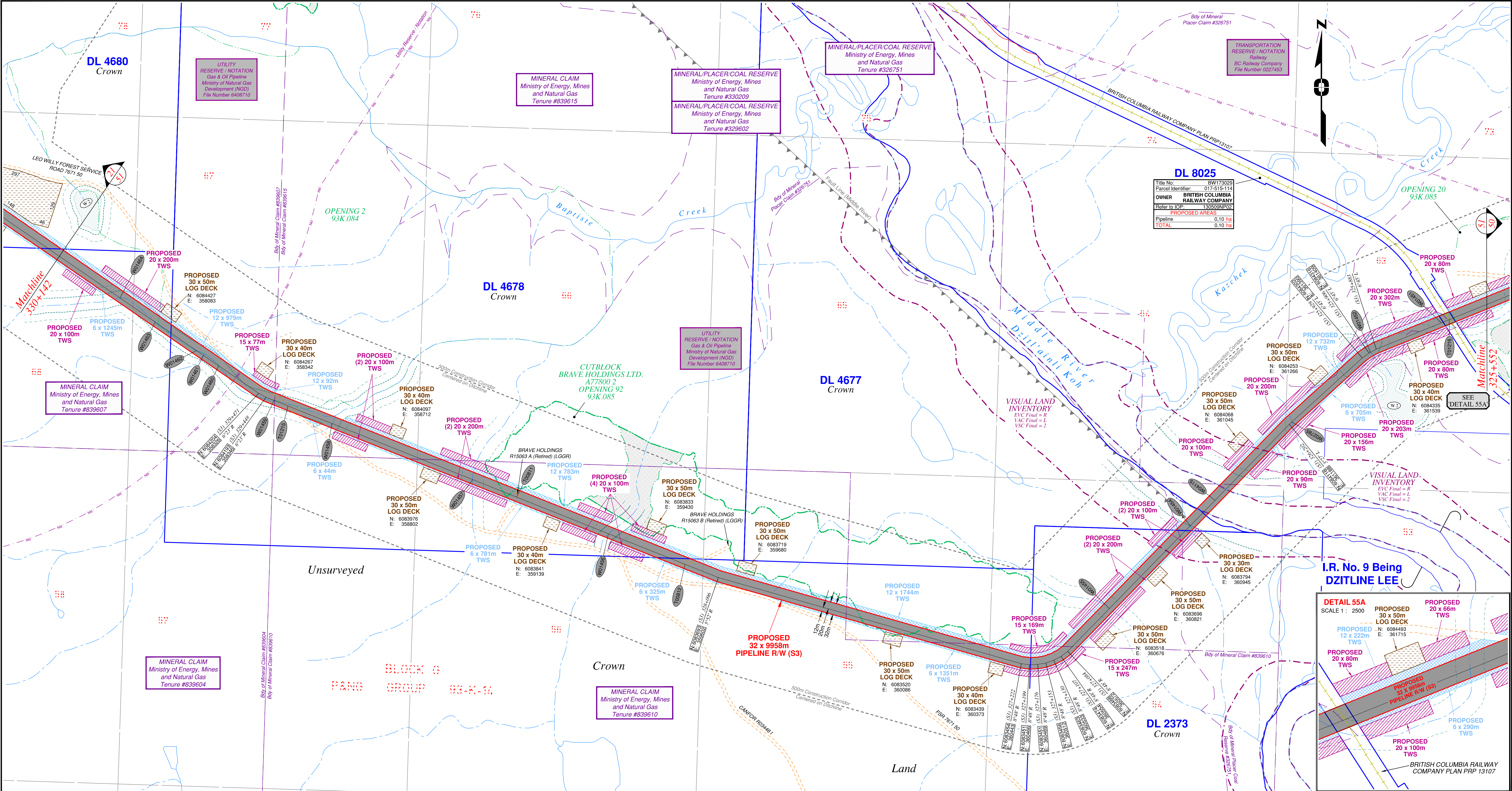
BCGS: 93K.081, 82, 83, 84, 85, 86, 87, 88, 89, 91, 94, 95, 96, 97, 99, 100 / 93M.010, 20, 28, 29, 30, 38 / 93N.001, 10

Sheet 50 of 51

WSP Surveys (BC) Limited Partnership
Fort St John BC
(250) 787-0300

WSP: 130275CP03R1
AF: 5005948
TCPL: 004776-09-ML-03-116
ePASS: 10050542

REV. 1

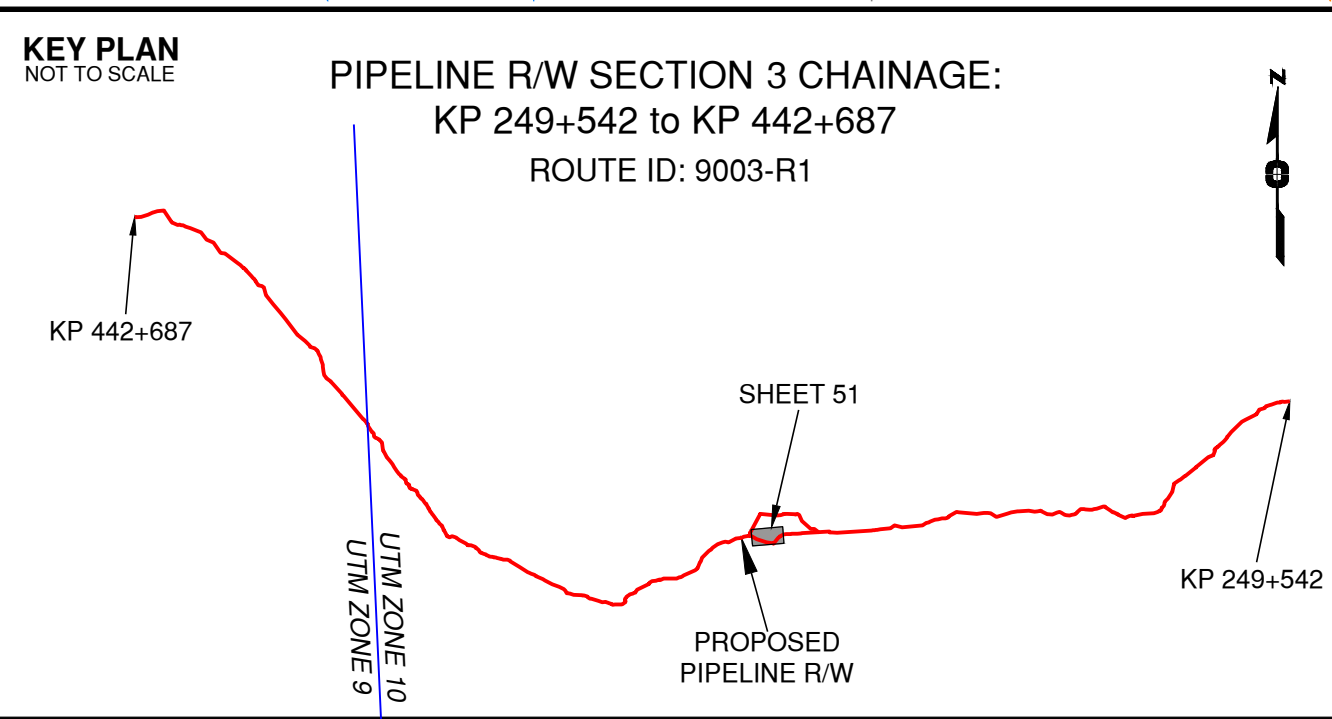


Rev	Revision Description	Date(Y/M/D)	By
0	Original Plan Prepared	2014/09/17	DC
1	Update P/L R/W (S4), Morrison Head - KP 436+715 to 440+846 Update Construction Corridor with Area Table & ePass Update Crossings, Scenery & Tenures	2015/01/14	DC

NOTES:

- Co-ordinates are NAD 83 Grid, UTM Zone 9 and Zone 10. Distances shown are in metres and decimals thereof. Chainages are two-dimensional and are on pipeline ditchline. Pipeline segment length derived from ditchline chainages.
- Fault Lines data has been provided from BGC Engineering Inc. Desktop Study dated December 20, 2013.
- Water crossing information has been provided by Stantec. Wetlands data has been provided by Stantec dated August 29, 2014. Freshwater Atlas wetlands outside of construction corridor have been removed from scenery.
- Cutblock data is confirmed using information from the Government of BC websites for Forest MapView and MapBC.
- This pipeline section is not within the Agricultural Land Reserve.
- Field Survey Completed December 15, 2014
- This plan represents the best information available at the time of survey. WSP Surveys and its employees take no responsibility for the location of any underground conduits, pipes, or other facilities whether shown on or omitted from this plan. All underground installations should be located by the respective authorities prior to construction.

LEGEND
Proposed Pipeline R/W shown thus:
Proposed Temp. Workspaces shown thus:
Proposed Log Decks & Storage Sites shown thus:
Right of Way shown thus:
Roads shown thus:
Highway shown thus:
Railway line shown thus:
Seismic line/trail shown thus:
Recreation Tenure shown thus:
Drainages shown thus:
Buried cable shown thus:
Fault Line shown thus:
Overhead powerline shown thus:
Riparian Reserve Zone shown thus:
Riparian Management Zone shown thus:
Forest Cover Reserve shown thus:
Archaeological site shown thus:
Agricultural Land Reserve shown thus:
Coal Tenure shown thus:
Cutblock shown thus:
Fence body shown thus:
Fish/Wildlife Reserve body shown thus:
Grazing Tenure body shown thus:
Mineral Claim body shown thus:
Tree Farm Licence shown thus:
Quarry Reserve body shown thus:
Ungulate Winter Range body shown thus:
Visual Land Inventory shown thus:
Watershed Reserve body shown thus:
Wind Tenure body shown thus:
Woodlot body shown thus:
Misc. Reserve/Notation body shown thus:
Misc. Licence/Permit body shown thus:
Stantec Wetland / Classification shown thus:
Crossings shown thus:
Old Growth Management Area shown thus:
Residences shown thus:
Agricultural Land Reserve body shown thus:
Coal Tenure body shown thus:
Cutblock body shown thus:
Fence body shown thus:



APPROVED BY
PROJECT ENGINEER
TABLE OF CROSSINGS
W01464 (S3)329+938 Tributary to Baptiste Creek / S3 / RRZ = 20 RMZ = 20 N 6084469 E 357941 ILMB
W01463 (S3)329+919 Tributary to Baptiste Creek / S3 / RRZ = 20 RMZ = 20 N 6084462 E 358039 ILMB
W01462 (S3)329+680 Tributary to Baptiste Creek / S3 / RRZ = 20 RMZ = 20 N 6084323 E 358154 ILMB
W01461 (S3)329+657 Tributary to Baptiste Creek / S3 / RRZ = 20 RMZ = 20 N 6084310 E 358173 ILMB
W01460 (S3)329+606 Tributary to Baptiste Creek / S3 / RRZ = 20 RMZ = 20 N 6084281 E 358215 ILMB
W01459 (S3)329+424 Tributary to Baptiste Creek / S3 / RRZ = 20 RMZ = 20 N 6084185 E 358368 ILMB
T01215 (S3)329+382 Forest Service Road (Leo Willy) / Condition Unknown / 7671 50 N 6084169 E 358407 District Mngt. Fort St. James
W01458 (S3)329+250 Tributary to Baptiste Creek / S3 / RRZ = 20 RMZ = 20 N 6084120 E 358530 ILMB
W01457 (S3)328+830 Tributary to Baptiste Creek / S4 / RRZ = 0 RMZ = 30 N 6083965 E 358920 ILMB
T00811 (S3)328+699 Forestry Road / LGGR / R15063 A (Retired) (LGGR) N 6083916 E 359042 Crown
W01456 (S3)328+424 Tributary to Baptiste Creek / S3 / RRZ = 20 RMZ = 20 N 6083814 E 359297 ILMB
T00812 (S3)328+190 Forestry Road / LGGR / R15063 B (Retired) (LGGR) N 6083729 E 359610 Crown
W01455 (S3)328+919 Tributary to Middle River / S4 / RRZ = 0 RMZ = 30 N 6083607 E 360698 ILMB
W01454 (S3)328+597 Tributary to Middle River / Non-classified drainage N 6083836 E 360912 ILMB
W04115 (S3)328+498 Middle River / S1 / RRZ = 50 RMZ = 20 N 6083907 E 360981 ILMB
W02785 (S3)326+193 Tributary to Middle River / Non-classified drainage N 6084124 E 361194 ILMB
W01452 (S3)325+901 Tributary to Middle River / S4 / RRZ = 0 RMZ = 30 N 6084318 E 361413 ILMB
W01451 (S3)325+688 Tributary to Middle River / S6 / RRZ = 0 RMZ = 20 N 6084409 E 361632 ILMB
T01216 (S3)325+664 Railway / Railroad / Plan PRP13107 NAD 83 UTM ZONE 10 Canadian National Railway
No. STATION DESCRIPTION OWNER

Prince Rupert Gas Transmission Project

TransCanada
In business to deliver

PRINCE RUPERT GAS TRANSMISSION LTD.

PROPOSED 32m PIPELINE R/W FROM a-18-A, 93-N-1 TO d-67-H, 93-K-14 (S1), d-67-H TO c-68-G, 93-K-14 (S2 & S3) & FROM c-68-G, 93-K-14 TO a-68-D, 93-M-8 (S4) (SHEET CHAINAGE: 325+552 TO 330+142)

Unsurveyed Crown Land/Private Land, Cassiar District & Range 5 Coast District

The intended plot size of this plan is 864mm in width by 560mm in height when plotted at a scale of 1: 5000 (use D size sheet)

BCGS: 93K-081, 82, 83, 84, 85, 86, 87, 88, 89, 91, 94, 95, 96, 97, 99, 100 / 93M-010, 20, 28, 29, 30, 38 / 93N-001, 10

Sheet 51 of 51

WSP Surveys (BC) Limited Partnership
Fort St John BC
(250) 787-0300

WSP: 130275CP03R1
AFCE: 5005948
TCPL: 004776-09-ML-03-117
ePASS: 10050542

REV. 1