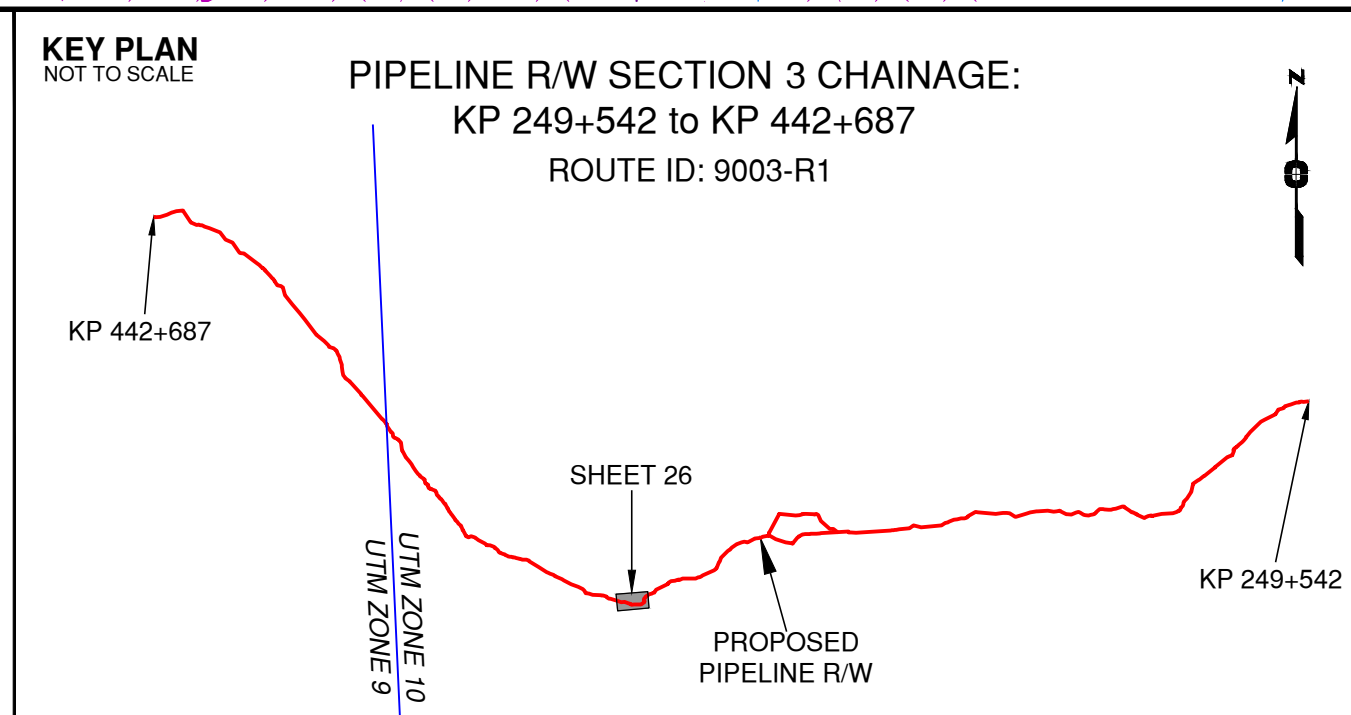


Rev	Revision Description	Date(Y/M/D)	By
0	Original Plan Prepared	2014/09/17	DC
1	Update P/L R/W (S4), Morrison Head - KP 436+715 to 440+846 Update Construction Corridor with Area Table & ePass Update Crossings, Scenery & Tenures	2015/01/14	DC

NOTES:

- Co-ordinates are NAD 83 Grid, UTM Zone 9 and Zone 10. Distances shown are in metres and decimals thereof. Chainages are two-dimensional and are on pipeline ditchline. Pipeline segment length derived from ditchline chainages.
- Fault Lines data has been provided from BGC Engineering Inc. Desktop Study dated December 20, 2013.
- Water crossing information has been provided by Stantec. Wetlands data has been provided by Stantec dated August 29, 2014. Freshwater Atlas wetlands outside of construction corridor have been removed from scenery.
- Cutblock data is confirmed using information from the Government of BC websites for Forest MapView and MapBC.
- This pipeline section is not within the Agricultural Land Reserve.
- Field Survey Completed December 15, 2014
- This plan represents the best information available at the time of survey. WSP Surveys and its employees take no responsibility for the location of any underground conduits, pipes, or other facilities whether shown on or omitted from this plan. All underground installations should be located by the respective authorities prior to construction.

LEGEND
Proposed Pipeline R/W shown thus:
Proposed Temp. Workspaces shown thus:
Proposed Log Decks & Storage Sites shown thus:
Right of Way shown thus:
Roads shown thus:
Highway shown thus:
Railway line shown thus:
Seismic line/trail shown thus:
Recreation Tenure shown thus:
Drainages shown thus:
Buried cable shown thus:
Buried pipe shown thus:
Overhead powerline shown thus:
Riparian Reserve Zone shown thus:
Riparian Management Zone shown thus:
Forest Cover Reserve shown thus:
Archaeological site shown thus:
Agricultural Land Reserve body shown thus:
Coal Tenure body shown thus:
Cutblock body shown thus:
Fence body shown thus:
Fish/Wildlife Reserve body shown thus:
Grazing Tenure body shown thus:
Mineral Claim body shown thus:
Quarry Reserve body shown thus:
Ungulate Winter Range body shown thus:
Visual Land Inventory shown thus:
Watershed Reserve body shown thus:
Wind Tenure body shown thus:
Woodlot body shown thus:
Fault Line shown thus:
Misc. Reserve/Notation body shown thus:
Misc. Licence/Permit body shown thus:
Stantec Wetland / Classification shown thus:
Crossings shown thus:
Old Growth Management Area shown thus:
Residences shown thus:
Power Pole shown thus:
Culturally Modified Trees with Face shown thus:



APPROVED BY

PROJECT ENGINEER

STATION	DESCRIPTION	OWNER
W01509	(S4)356+253 Trib to Tildesley Creek / Non-classified drainage	N 6077776 E 337003 ILMB
T00327	(S4)356+019 Trail / Condition Unknown	N 6077685 E 337219 Crown
W01508	(S4)355+607 Trib to Tildesley Creek / S6 / RRZ = 0 RMZ = 20	N 6077646 E 337626 ILMB
T00326	(S4)355+407 Trail / Condition Unknown	N 6077592 E 337815 Crown
W03752	(S4)354+912 Trib to Tildesley Creek / Non-classified drainage	N 6077399 E 338270 ILMB
W01506	(S4)354+243 Trib to Tildesley Creek / Non-classified drainage	N 6077198 E 338880 ILMB
W01505	(S4)353+744 Trib to Fleming Creek / Non-classified drainage	N 6077151 E 339377 ILMB
T01087	(S4)353+744 Trail / Condition Unknown	N 6077151 E 339377 Crown
T00893	(S4)353+500 Trail / Condition Unknown	N 6077144 E 339620 Crown
W01504	(S4)353+415 Trib to Fleming Creek / Non-classified drainage	N 6077148 E 339705 ILMB
W01503	(S4)353+060 Trib to Fleming Creek / Non-classified drainage	N 6077245 E 340404 ILMB
T01085	(S4)352+568 Trail / Condition Unknown	N 6077595 E 340312 Crown
W01502	(S4)352+331 Trib to Fleming Creek / S3 / RRZ = 20 RMZ = 20	N 6077826 E 340312 ILMB
W03751	(S4)352+189 Trib to Fleming Creek / Non-classified drainage	N 6077934 E 340403 ILMB
W01499	(S4)352+101 Trib to Fleming Creek / Non-classified drainage	N 6078001 E 340459 ILMB
No.	STATION	DESCRIPTION

TABLE OF CROSSINGS

Prince Rupert Gas Transmission Project

TransCanada
In business to deliver

PRINCE RUPERT GAS TRANSMISSION LTD.

PROPOSED 32m PIPELINE R/W FROM a-18-A, 93-N-1 TO d-67-H, 93-K-14 (S1), d-67-H TO c-68-G, 93-K-14 (S2 & S3) & FROM c-68-G, 93-K-14 TO a-68-D, 93-M-8 (S4) (SHEET CHAINAGE: 351+851 TO 356+481)

Unsurveyed Crown Land/Crown Land/Private Land, Cassiar District & Range 5 Coast District

The intended plot size of this plan is 864mm in width by 560mm in height when plotted at a scale of 1: 5000 (use D size sheet)

BCGS: 93K.081, 82, 83, 84, 85, 86, 87, 88, 89, 91, 94, 95, 96, 97, 99, 100 / 93M.010, 20, 28, 29, 30, 38 / 93N.001, 10

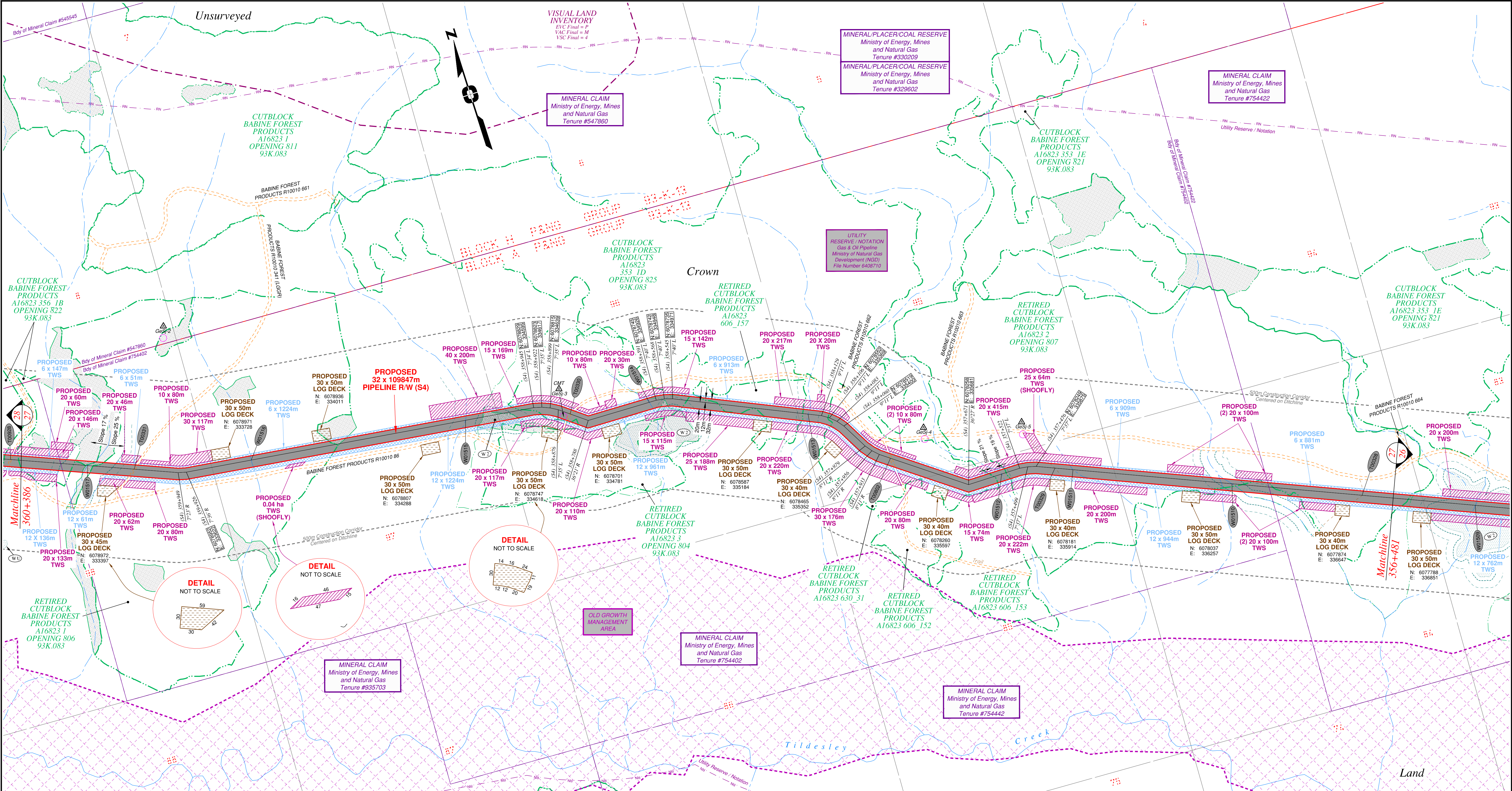
Sheet 26 of 51

WSP
WSP Surveys (BC) Limited Partnership
Fort St John BC
(250) 787-0300

WSP:
AFPE:
TCPL:
ePASS:

130275C03R1
5005948
004776-09-ML-03-088
10050542

REV.
1

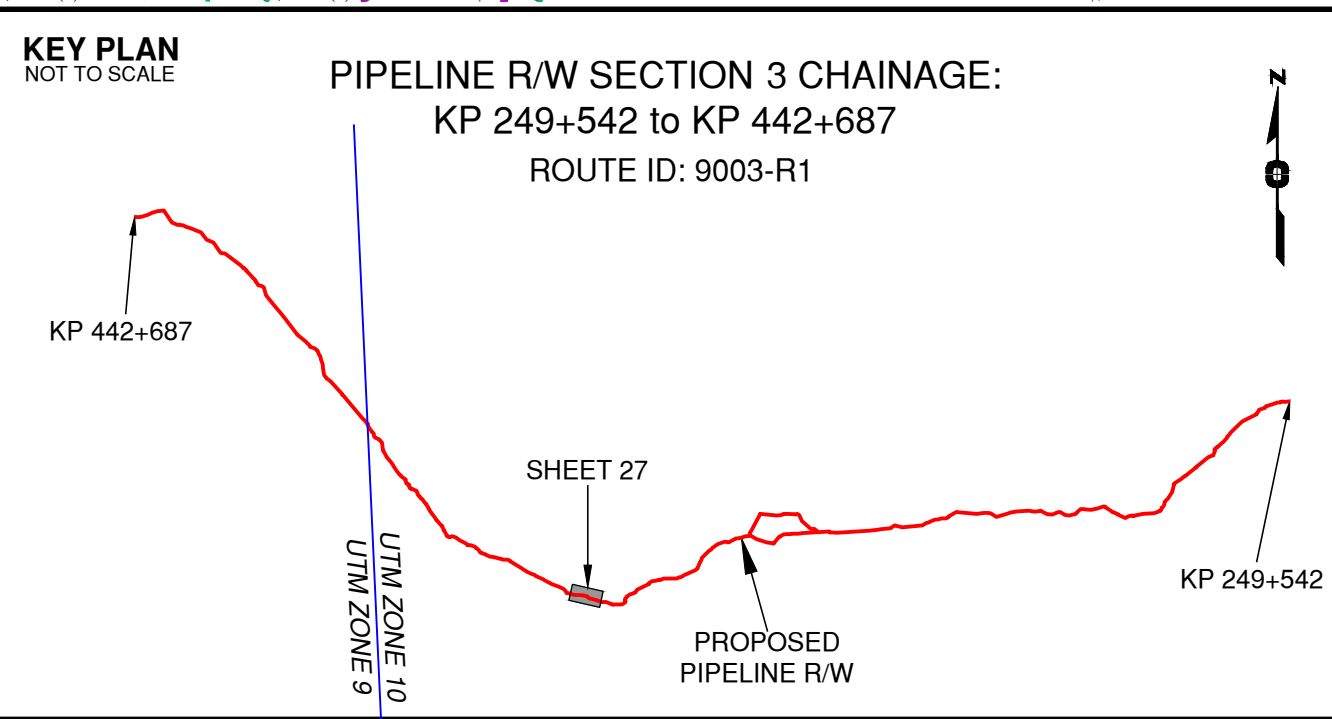


Rev	Revision Description	Date(Y/M/D)	By
0	Original Plan Prepared	2014/09/17	DC
1	Update P/L R/W (S4), Morrison Head - KP 436+715 to 440+846 Update Construction Corridor with Area Table & ePass Update Crossings, Scenery & Tenures	2015/01/14	DC

NOTES:

- Co-ordinates are NAD 83 Grid, UTM Zone 9 and Zone 10. Distances shown are in metres and decimals thereof. Chainages are two-dimensional and are on pipeline ditchline. Pipeline segment length derived from ditchline chainages.
- Fault Lines data has been provided from BGC Engineering Inc. Desktop Study dated December 20, 2013.
- Water crossing information has been provided by Stantec. Wetlands data has been provided by Stantec dated August 29, 2014. Freshwater Atlas wetlands outside of construction corridor have been removed from scenery.
- Cutblock data is confirmed using information from the Government of BC websites for Forest MapView and MapBC.
- This pipeline section is not within the Agricultural Land Reserve.
- Field Survey Completed December 15, 2014
- This plan represents the best information available at the time of survey. WSP Surveys and its employees take no responsibility for the location of any underground conduits, pipes, or other facilities whether shown on or omitted from this plan. All underground installations should be located by the respective authorities prior to construction.

LEGEND
Proposed Pipeline R/W shown thus:
Proposed Temp. Workspaces shown thus:
Proposed Log Decks & Storage Sites shown thus:
Right of Way shown thus:
Roads shown thus:
Highway shown thus:
Railway line shown thus:
Seismic line/trail shown thus:
Recreation Tenure shown thus:
Drainages shown thus:
Buried cable shown thus:
Buried pipe shown thus:
Overhead powerline shown thus:
Riparian Reserve Zone shown thus:
Riparian Management Zone shown thus:
Forest Cover Reserve shown thus:
Archaeological site shown thus:
Agricultural Land Reserve body shown thus:
Coal Tenure body shown thus:
Cutblock body shown thus:
Fence body shown thus:
Fish/Wildlife Reserve body shown thus:
Grazing Tenure body shown thus:
Mineral Claim body shown thus:
Tree Farm Licence shown thus:
Quarry Reserve body shown thus:
Ungulate Winter Range body shown thus:
Visual Land Inventory shown thus:
Watershed Reserve body shown thus:
Wind Tenure body shown thus:
Woodlot body shown thus:
Fault Line shown thus:
Misc. Reserve/Notation body shown thus:
Misc. Licence/Permit body shown thus:
Old Growth Management Area shown thus:
Residences shown thus:
Culturally Modified Trees with Face shown thus:



APPROVED BY
PROJECT ENGINEER

No.	STATION	DESCRIPTION	NAD 83 UTM ZONE 10	OWNER
W01517	(S4)360+201	Trib to Tildesley Creek / S3 / RRZ = 20 RMZ = 20	N 6079053 E 333367	ILMB
T00331	(S4)360+071	Forestry Road / LGGR / R10010 341	N 6079004 E 333487	Babine Forest Products Ltd
W01516	(S4)359+743	Trib to Tildesley Creek / No visible channel	N 6078929 E 333804	ILMB
W01515	(S4)359+138	Trib to Tildesley Creek / S4 / RRZ = 0 RMZ = 30	N 6078853 E 334405	ILMB
T00330	(S4)358+841	Forestry Road / Condition Unknown / R10010 86	N 6078792 E 334686	Babine Forest Products Ltd
W01514	(S4)358+611	Trib to Tildesley Creek / No visible channel	N 6078746 E 334986	ILMB
W01513	(S4)358+167	Trib to Tildesley Creek / S4 / RRZ = 0 RMZ = 30	N 6078580 E 335316	ILMB
T00802	(S4)357+901	Trail / Condition Unknown	N 6078394 E 335496	Crown
W01512	(S4)357+575	Trib to Tildesley Creek / S6 / RRZ = 0 RMZ = 20	N 6078258 E 335777	ILMB
T00329	(S4)357+424	Trail / Condition Unknown	N 6078229 E 335923	Crown
W01511	(S4)357+374	Trib to Tildesley Creek / Non-classified drainage	N 6078210 E 335969	ILMB
W01510	(S4)356+931	Trib to Tildesley Creek / S3 / RRZ = 20 RMZ = 20	N 6077898 E 336712	ILMB
T00328	(S4)356+568	Trail / Condition Unknown	N 6077838 E 336712	Crown
No.	STATION	DESCRIPTION	NAD 83 UTM ZONE 10	OWNER

TABLE OF CROSSINGS

PRINCE RUPERT GAS TRANSMISSION LTD.

PROPOSED 32m PIPELINE R/W FROM a-18-A, 93-N-1 TO d-67-H, 93-K-14 (S1), d-67-H TO c-68-G, 93-K-14 (S2 & S3) & FROM c-68-G, 93-K-14 TO a-68-D, 93-M-8 (S4) (SHEET CHAINAGE: 356+481 TO 360+386)

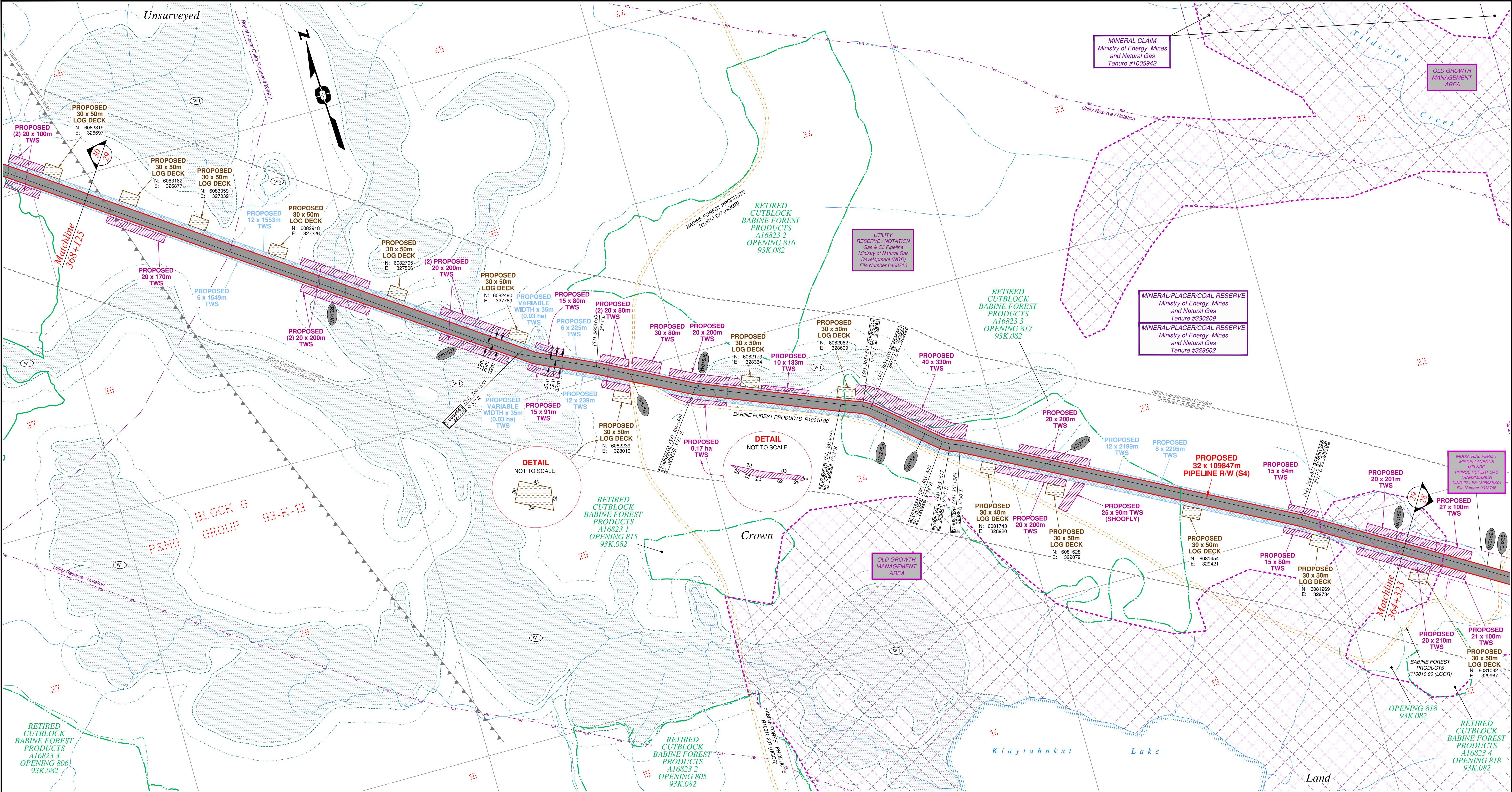
Unsurveyed Crown Land/Crown Land/Private Land, Cassiar District & Range 5 Coast District

The intended plot size of this plan is 864mm in width by 560mm in height when plotted at a scale of 1: 5000 (use D size sheet)

BCGS: 93K.081, 82, 83, 84, 85, 86, 87, 88, 89, 91, 94, 95, 96, 97, 99, 100 / 93M.010, 20, 28, 29, 30, 38 / 93N.001, 10

Sheet 27 of 51

WSP Surveys (BC) Limited Partnership Fort St John BC (250) 787-0300	WSP: 130275CPO3R1 AFE: 5005948 TCPL: 004776-09-ML-03-089 ePASS: 10050542	REV. 1
---	---	--------

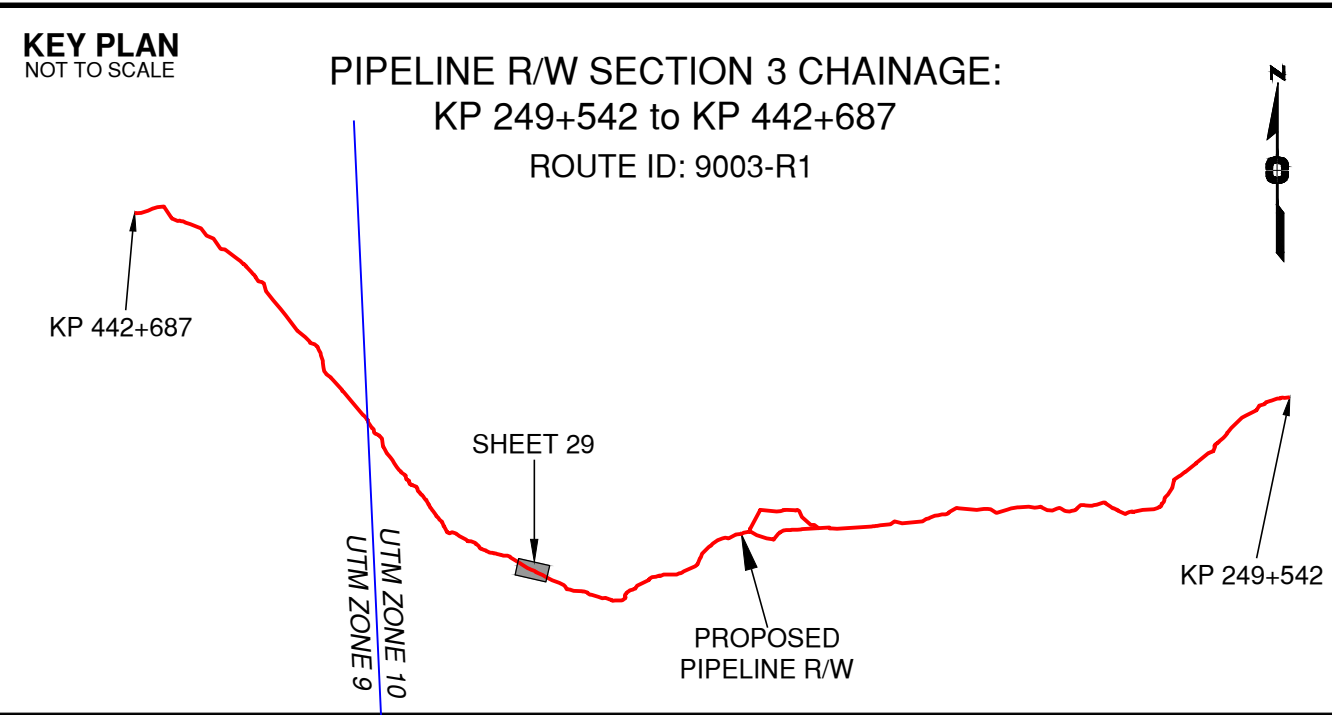


Rev	Revision Description	Date(Y/M/D)	By
0	Original Plan Prepared	2014/09/17	DC
1	Update P/L R/W (S4), Morrison Head - KP 436+715 to 440+846 Update Construction Corridor with Area Table & ePass Update Crossings, Scenery & Tenures	2015/01/14	DC

NOTES:

- Co-ordinates are NAD 83 Grid, UTM Zone 9 and Zone 10. Distances shown are in metres and decimals thereof. Chainages are two-dimensional and are on pipeline ditchline. Pipeline segment length derived from ditchline chainages.
- Fault Lines data has been provided from BGC Engineering Inc. Desktop Study dated December 20, 2013.
- Water crossing information has been provided by Stantec. Wetlands data has been provided by Stantec dated August 29, 2014. Freshwater Atlas wetlands outside of construction corridor have been removed from scenery.
- Cutblock data is confirmed using information from the Government of BC websites for Forest MapView and MapBC.
- This pipeline section is not within the Agricultural Land Reserve.
- Field Survey Completed December 15, 2014
- This plan represents the best information available at the time of survey. WSP Surveys and its employees take no responsibility for the location of any underground conduits, pipes, or other facilities whether shown on or omitted from this plan. All underground installations should be located by the respective authorities prior to construction.

LEGEND
Proposed Pipeline R/W shown thus:
Proposed Temp. Workspaces shown thus: TWS / TWS
Proposed Log Decks & Storage Sites shown thus:
Right of Way shown thus:
Roads shown thus:
Highway shown thus:
Railway line shown thus:
Seismic line/trail shown thus:
Recreation Tenure shown thus:
Drainages shown thus:
Buried cable shown thus:
Buried pipe shown thus:
Overhead powerline shown thus:
Forest Cover Reserve shown thus:
Archaeological site shown thus:
Agricultural Land Reserve shown thus:
Coal Tenure shown thus:
Cutblock body shown thus:
Fence body shown thus:
Fish/Wildlife Reserve body shown thus:
Grazing Tenure body shown thus:
Mineral Claim body shown thus:
Tree Farm Licence shown thus:
Quarry Reserve body shown thus:
Ungulate Winter Range body shown thus:
Visual Land Inventory shown thus:
Watershed Reserve body shown thus:
Wind Tenure body shown thus:
Woodlot body shown thus:
Fault Line shown thus:
Misc. Reserve/Notation body shown thus:
Misc. Licence/Permit body shown thus:
Stantec Wetland / Classification shown thus:
Crossings shown thus:
Old Growth Management Area shown thus:
Residences shown thus:
Power Pole shown thus:
Culturally Modified Trees with Face shown thus:



APPROVED BY _____

PROJECT ENGINEER _____

No.	STATION	DESCRIPTION	NAD 83 UTM ZONE 10	OWNER
W01526	(S4)367+400	Trib to Klaytahnkut Lake / S5 / RRZ = 0 RMZ = 30	N 6082775 E 327337	ILMB
W01527	(S4)366+977	Trib to Klaytahnkut Lake / S5 / RRZ = 0 RMZ = 30	N 6082520 E 327674	ILMB
T00336	(S4)366+534	Forestry Road / HSGR / R10010 207	N 6082295 E 328054	Babine Forest Products Ltd
W01526	(S4)366+342	Trib to Tildesley Creek / S4 / RRZ = 0 RMZ = 30	N 6082201 E 328222	ILMB
W02789	(S4)365+809	Trib to Tildesley Creek / S4 / RRZ = 0 RMZ = 30	N 6081967 E 328697	ILMB
W01525	(S4)365+693	Trib to Tildesley Creek / S4 / RRZ = 0 RMZ = 30	N 6081888 E 328783	ILMB
W02776	(S4)365+343	Trib to Tildesley Creek / S4 / RRZ = 0 RMZ = 30	N 6081706 E 329080	ILMB
W01524	(S4)364+348	Trib to Tildesley Creek / S4 / RRZ = 0 RMZ = 30	N 6081195 E 329933	ILMB
No.	STATION	DESCRIPTION	NAD 83 UTM ZONE 10	OWNER

TABLE OF CROSSINGS

Prince Rupert
Gas Transmission Project

TransCanada
In business to deliver

PRINCE RUPERT GAS TRANSMISSION LTD.

PROPOSED 32m PIPELINE R/W FROM a-18-A, 93-N-1 TO d-67-H, 93-K-14 (S1), d-67-H TO c-68-G, 93-K-14 (S2 & S3) & FROM c-68-G, 93-K-14 TO a-68-D, 93-M-8 (S4) (SHEET CHAINAGE: 364+323 TO 368+125)

Unsurveyed Crown Land/Crown Land/Private Land, Cassiar District & Range 5 Coast District

100 0 100 200 300 400

The intended plot size of this plan is 864mm in width by 560mm in height when plotted at a scale of 1: 5000 (use D size sheet)

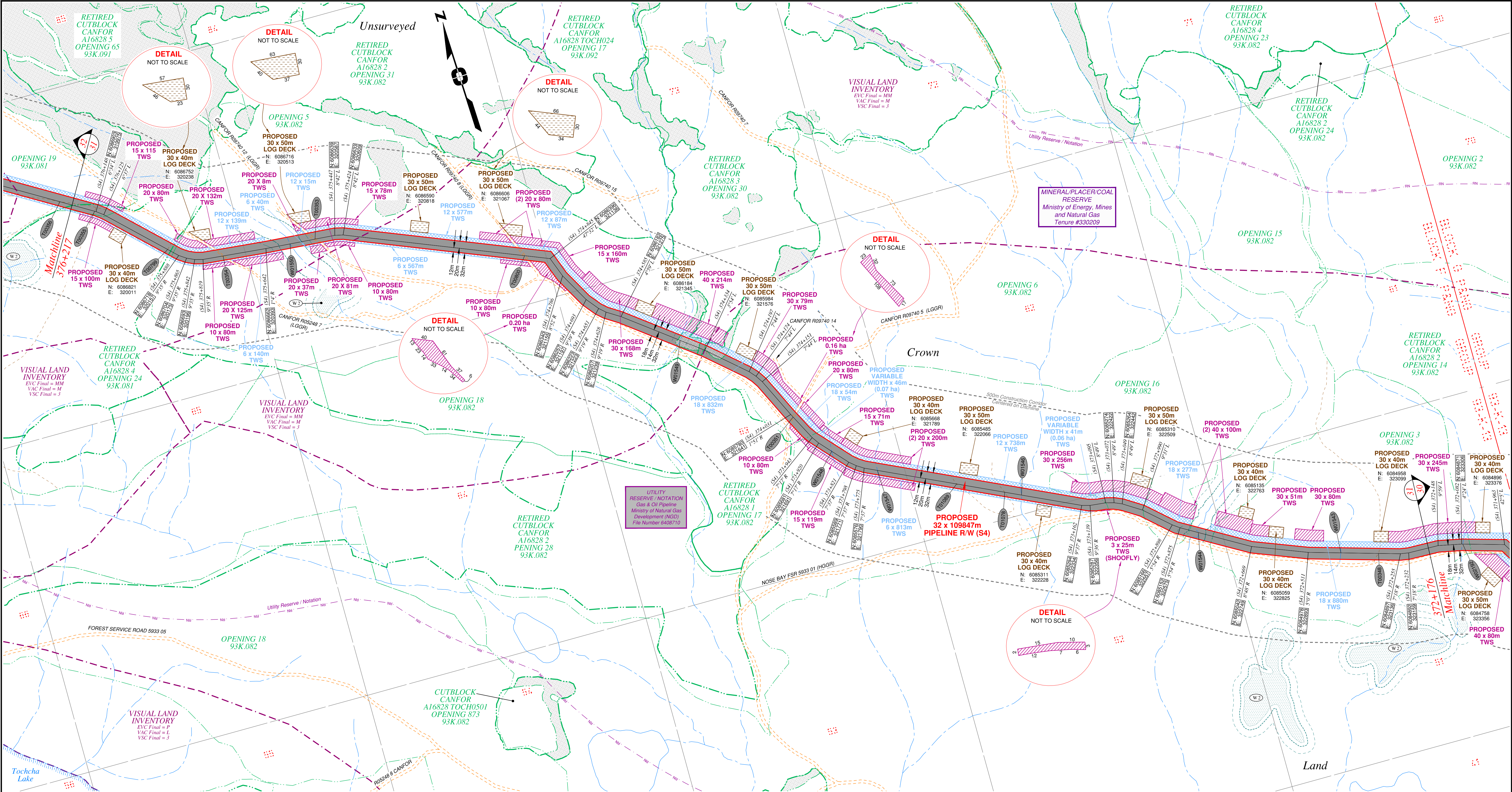
BCGS: 93K.081, 82.83, 84, 85, 86, 87, 88, 89, 91, 94, 95, 96, 97, 99, 100 / 93M.010, 20, 28, 29, 30, 38 / 93N.001, 10

Sheet 29 of 51

WSP Surveys (BC) Limited Partnership
Fort St John BC
(250) 787-0300

WSP: 130275CP03R1
AFE: 5005948
TCPL: 004776-09-ML-03-091
ePASS: 10050542

REV. 1

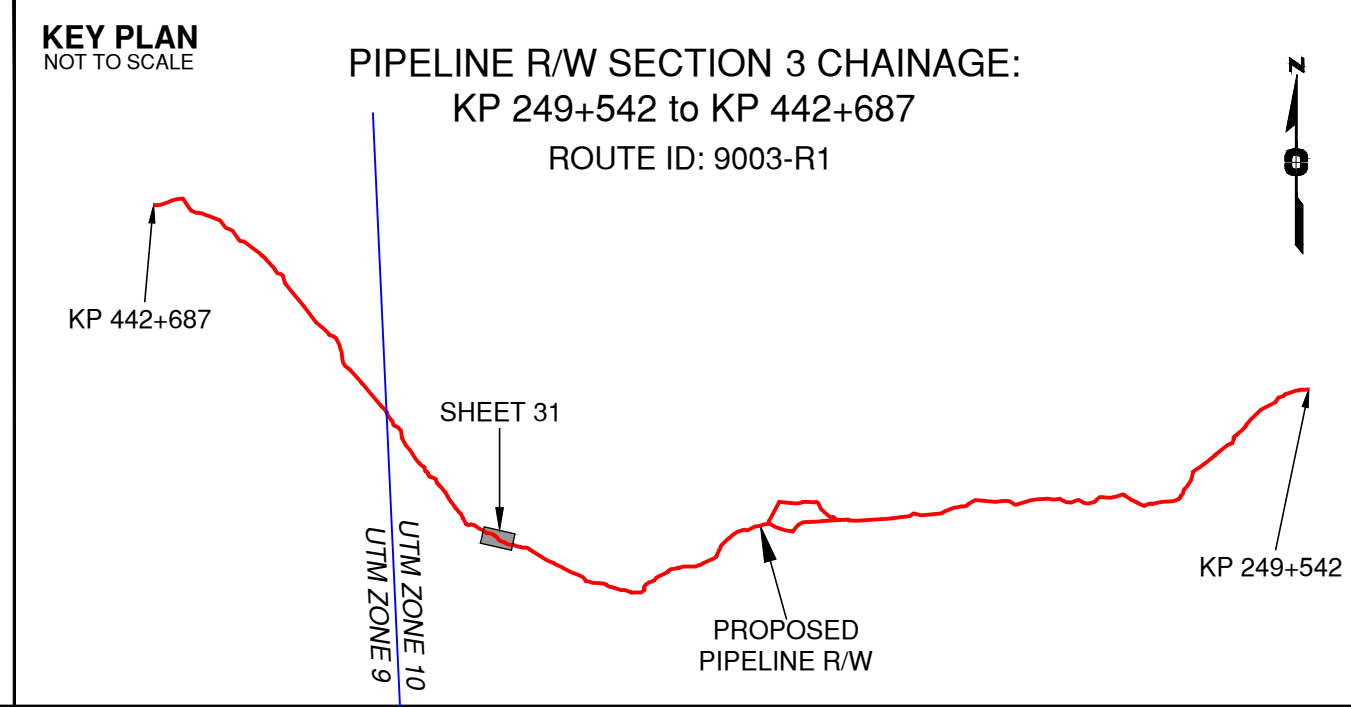


Rev	Revision Description	Date(Y/M/D)	By
0	Original Plan Prepared	2014/09/17	DC
1	Update P/L R/W (S4), Morrison Head - KP 436+715 to 440+846 Update Construction Corridor with Area Table & ePass Update Crossings, Scenery & Tenures	2015/01/14	DC

NOTES:

- Co-ordinates are NAD 83 Grid, UTM Zone 9 and Zone 10. Distances shown are in metres and decimals thereof. Chainages are on or omitted from this plan. All underground conduits, pipes, or other facilities whether shown on or omitted from this plan. All underground installations should be located by the respective authorities prior to construction.
- Fault Lines data has been provided from BGC Engineering Inc. Desktop Study dated December 20, 2013.
- Water crossing information has been provided by Stantec. Wetlands data has been provided by Stantec dated August 29, 2014. Freshwater Atlas wetlands outside of construction corridor have been removed from scenery.
- Cutblock data is confirmed using information from the Government of BC websites for Forest MapView and MapBC.
- This pipeline section is not within the Agricultural Land Reserve.
- Field Survey Completed December 15, 2014
- This plan represents the best information available at the time of survey. WSP Surveys and its employees take no responsibility for the location of any underground conduits, pipes, or other facilities whether shown on or omitted from this plan. All underground installations should be located by the respective authorities prior to construction.

LEGEND
Proposed Pipeline R/W shown thus:
Proposed Temp. Workspaces shown thus:
Proposed Log Decks & Storage Sites shown thus:
Right of Way shown thus:
Roads shown thus:
Highway shown thus:
Railway line shown thus:
Seismic line/trail shown thus:
Recreation Tenure shown thus:
Drainages shown thus:
Buried cable shown thus:
Buried pipe shown thus:
Overhead powerline shown thus:
Riparian Reserve Zone shown thus:
Forest Cover Reserve shown thus:
Archaeological site shown thus:
Agricultural Land Reserve body shown thus:
Coal Tenure body shown thus:
Cutblock body shown thus:
Fence body shown thus:
Fish/Wildlife Reserve body shown thus:
Grazing Tenure body shown thus:
Mineral Claim body shown thus:
Tree Farm Licence shown thus:
Quarry Reserve body shown thus:
Ungulate Winter Range body shown thus:
Visual Land Inventory shown thus:
Watershed Reserve body shown thus:
Wind Tenure body shown thus:
Woodlot body shown thus:
Fault Line shown thus:
Misc. Reserve/Notation body shown thus:
Stantec Wetland / Classification shown thus:
Crossings shown thus:
Old Growth Management Area shown thus:
Residences shown thus:
Power Pole shown thus:
Culturally Modified Trees with Face shown thus:



APPROVED BY
PROJECT ENGINEER

No.	STATION	DESCRIPTION	OWNER
T00355	(S4)376+152	Trail / Condition Unknown	Crown
T00799	(S4)375+923	Trail / Condition Unknown	Crown
T00354	(S4)375+762	Forestry Road / LGGR / R05248 7	Canadian Forest Products Ltd
W01550	(S4)375+574	Trib to Gloyazikut Creek / S2 / RRZ = 30 RMZ = 20	ILMB
T00353	(S4)375+503	Forestry Road / LGGR / R09740 12	Canadian Forest Products Ltd
T00800	(S4)374+917	Forestry Road / LGGR / R09740 8	Canadian Forest Products Ltd
W01549	(S4)374+408	Trib to Gloyazikut Creek / S6 / RRZ = 0 RMZ = 20	ILMB
T00351	(S4)374+021	Forestry Road / LGGR / R09740 5	Canadian Forest Products Ltd
W01548	(S4)373+977	Trib to Gloyazikut Creek / No visible channel	ILMB
W01547	(S4)373+736	Trib to Gloyazikut Creek / Non-classified drainage	ILMB
T01089	(S4)373+515	Trail / Condition Unknown	Crown
T01078	(S4)373+379	Trail / Condition Unknown	Crown
W01546	(S4)373+332	Trib to Gloyazikut Creek / No visible channel	ILMB
W01544	(S4)372+822	Trib to Gloyazikut Creek / S3 / RRZ = 20 RMZ = 20	ILMB
W01543	(S4)372+421	Trib to Gloyazikut Creek / No visible channel	ILMB
T00348	(S4)372+316	Trail / Condition Unknown	Crown
No.	STATION	DESCRIPTION	OWNER

Prince Rupert
Gas Transmission Project

TransCanada
In business to deliver

PRINCE RUPERT GAS TRANSMISSION LTD.

PROPOSED 32m PIPELINE R/W FROM a-18-A, 93-N-1 TO
d-67-H, 93-K-14 (S1), d-67-H TO c-68-G, 93-K-14 (S2 & S3)
& FROM c-68-G, 93-K-14 TO a-68-D, 93-M-8 (S4)
(SHEET CHAINAGE: 372+176 TO 376+217)

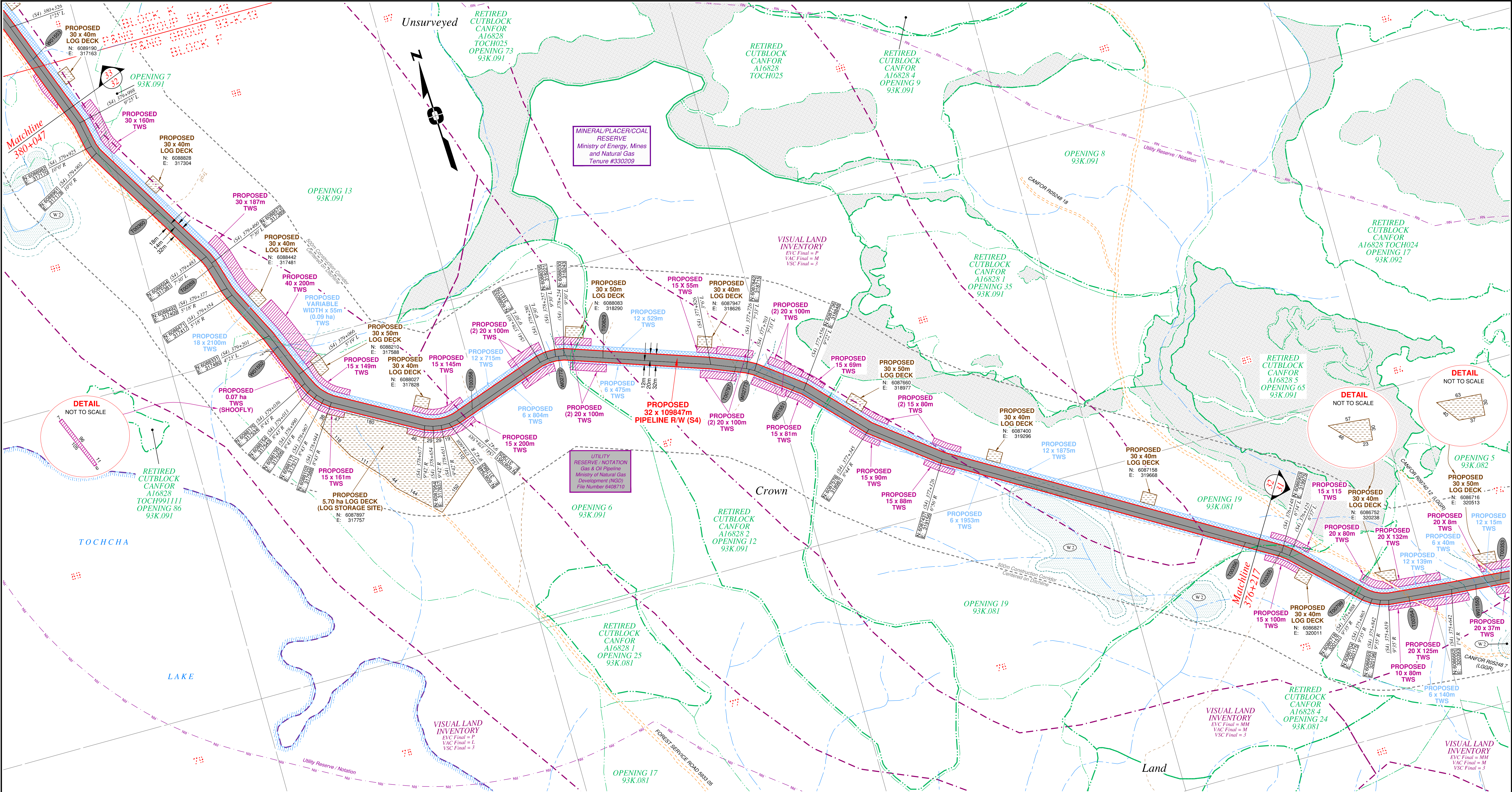
Unsurveyed Crown Land/Crown Land/Private Land, Cassiar District & Range 5 Coast District

The intended plot size of this plan is 864mm in width by 560mm in height when plotted at a scale of 1: 5000 (use D size sheet)

BCGS: 93K.081, 82.83, 84, 85, 86, 87, 88, 89, 91, 94, 95, 96, 97, 99, 100 / 93M.010, 20, 28, 29, 30, 38 / 93N.001, 10

WSP Surveys (BC)	WSP:	130275CPO3R1	REV.
Fort St John BC	AFE:	5005948	
(250) 787-0300	TCPL:	004776-09-ML-03-093	
	ePASS:	10050542	1

1/14/2015 3:03:58 PM

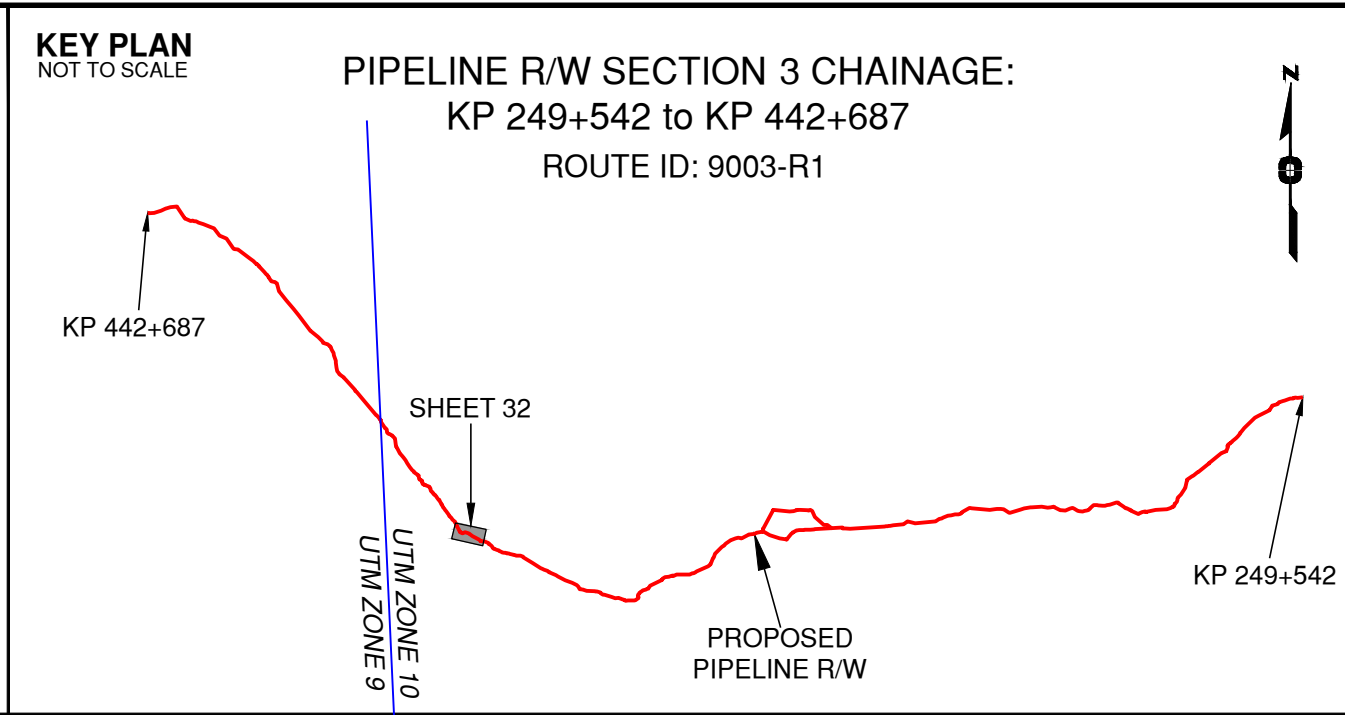


Rev	Revision Description	Date(Y/M/D)	By
0	Original Plan Prepared	2014/09/17	DC
1	Update P/L R/W (S4), Morrison Head - KP 436+715 to 440+846 Update Construction Corridor with Area Table & ePass Update Crossings, Scenery & Tenures	2015/01/14	DC

NOTES:

- Co-ordinates are NAD 83 Grid. UTM Zone 9 and Zone 10. Distances shown are in metres and decimals thereof. Chainages are two-dimensional and are on pipeline ditchline. Pipeline segment length derived from ditchline chainages.
- Fault Lines data has been provided from BGC Engineering Inc. Desktop Study dated December 20, 2013.
- Water crossing information has been provided by Stantec. Wetlands data has been provided by Stantec dated August 29, 2014. Freshwater Atlas wetlands outside of construction corridor have been removed from scenery.
- Cutblock data is confirmed using information from the Government of BC websites for Forest MapView and MapBC.
- This pipeline section is not within the Agricultural Land Reserve.
- Field Survey Completed December 15, 2014
- This plan represents the best information available at the time of survey. WSP Surveys and its employees take no responsibility for the location of any underground conduits, pipes, or other facilities whether shown on or omitted from this plan. All underground installations should be located by the respective authorities prior to construction.

LEGEND
Proposed Pipeline R/W shown thus:
Proposed Temp. Workspaces shown thus:
Proposed Log Decks & Storage Sites shown thus:
Right of Way shown thus:
Roads shown thus:
Highway shown thus:
Railway line shown thus:
Seismic line/trail shown thus:
Recreation Tenure shown thus:
Drainages shown thus:
Buried cable shown thus:
Misc. Reserve/Notation bdy shown thus:
Overhead powerline shown thus:
Riparian Reserve Zone shown thus:
Riparian Management Zone shown thus:
Forest Cover Reserve shown thus:
Archaeological site shown thus:
Agricultural Land Reserve bdy shown thus:
Coal Tenure bdy shown thus:
Cutblock bdy shown thus:
Fence bdy shown thus:
Fish/Wildlife Reserve bdy shown thus:
Grazing Tenure bdy shown thus:
Mineral Claim bdy shown thus:
Tree Farm Licence shown thus:
Quarry Reserve bdy shown thus:
Ungulate Winter Range bdy shown thus:
Visual Land Inventory shown thus:
Watershed Reserve bdy shown thus:
Wind Tenure bdy shown thus:
Woodlot bdy shown thus:
Fault Line shown thus:
Misc. Reserve/Notation bdy shown thus:
Misc. Licence/Permit bdy shown thus:
Stantec Wetland / Classification shown thus:
Crossings shown thus:
Old Growth Management Area shown thus:
Residences shown thus:
Culturally Modified Trees with Face shown thus:



APPROVED BY _____

PROJECT ENGINEER _____

No.	STATION	DESCRIPTION	NAD 83 UTM ZONE 10	OWNER
T00360	(S4)379+669	Trail / Condition Unknown	N 6088757 E 317291	Crown
T00359	(S4)379+451	Trail / Condition Unknown	N 6088564 E 317391	Crown
W01552	(S4)379+163	Trib to Tochcha Lake / S4 / RRZ = 0 RMZ = 30	N 6086265 E 317493	ILMB
T00358	(S4)378+532	Trail / Condition Unknown	N 6087966 E 317956	Crown
W02772	(S4)378+250	Trib to Tochcha Lake / S3 / RRZ = 20 RMZ = 20	N 6089033 E 318228	ILMB
T00829	(S4)378+126	Trail / Condition Unknown	N 6087991 E 318344	Crown
T00797	(S4)377+756	Trail / Condition Unknown	N 6087854 E 318688	Crown
W02773	(S4)377+718	Trib to Tochcha Lake / S3 / RRZ = 20 RMZ = 20	N 6087837 E 318722	ILMB
W01551	(S4)377+584	Trib to Tochcha Lake / Non-classified drainages	N 6087754 E 318827	ILMB
T00356	(S4)376+252	Trail / Condition Unknown	N 6086960 E 319888	Crown
No.	STATION	DESCRIPTION	NAD 83 UTM ZONE 10	OWNER

TABLE OF CROSSINGS

Prince Rupert
Gas Transmission Project

TransCanada
In business to deliver

PRINCE RUPERT GAS TRANSMISSION LTD.

PROPOSED 32m PIPELINE R/W FROM a-18-A, 93-N-1 TO d-67-H, 93-K-14 (S1), d-67-H TO c-68-G, 93-K-14 (S2 & S3) & FROM c-68-G, 93-K-14 TO a-68-D, 93-M-8 (S4) (SHEET CHAINAGE: 376+217 TO 380+047)

Unsurveyed Crown Land/Crown Land/Private Land, Cassiar District & Range 5 Coast District

The intended plot size of this plan is 864mm in width by 560mm in height when plotted at a scale of 1: 5000 (use D size sheet)

BCGS: 93K.081, 82, 83, 84, 85, 86, 87, 88, 89, 91, 94, 95, 96, 97, 99, 100 / 93M.010, 20, 28, 29, 30, 38 / 93N.001, 10

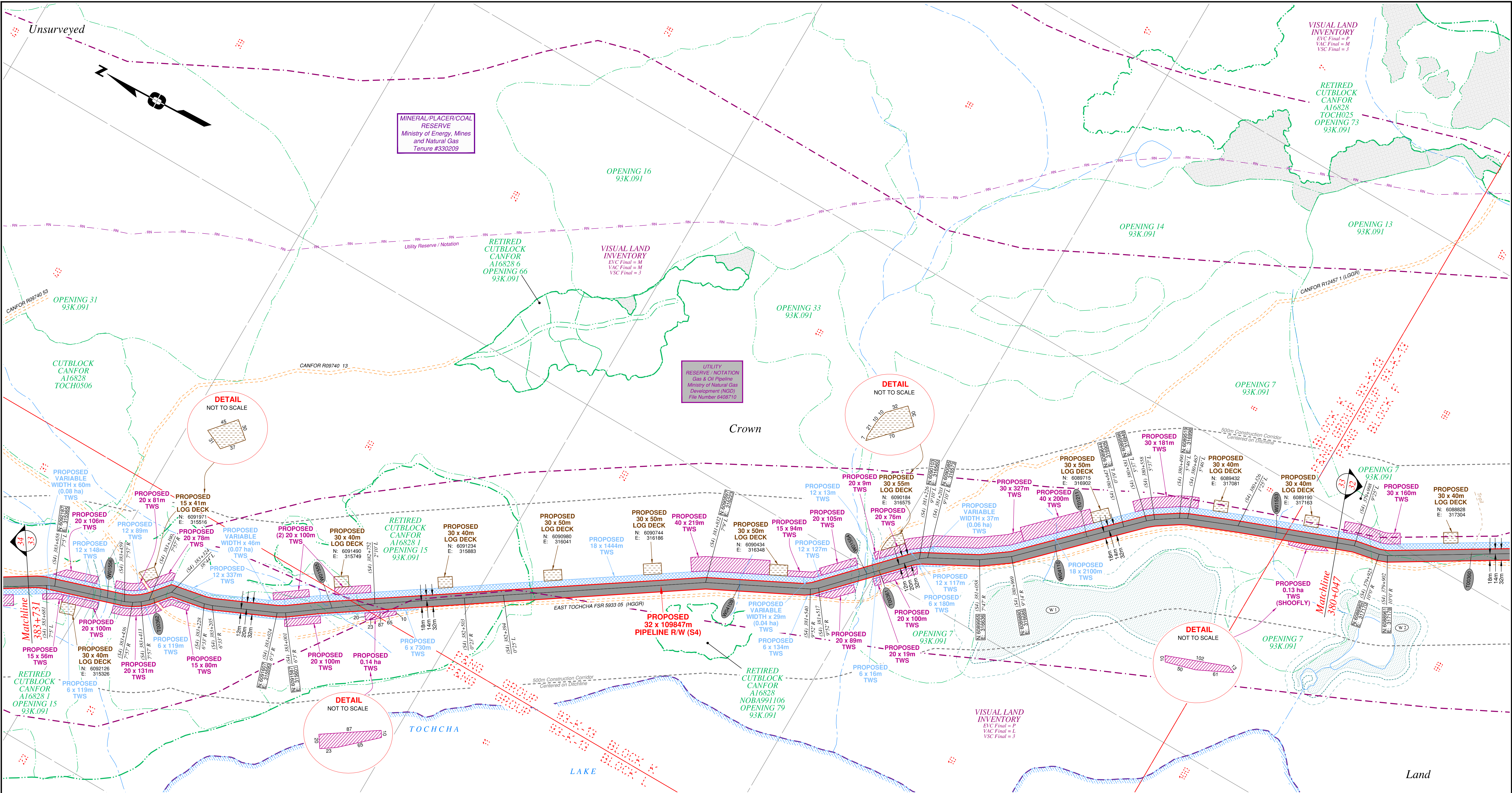
Sheet 32 of 51

WSP Surveys (BC)
Limited Partnership
Fort St John BC
(250) 787-0300

WSP:
AFCE:
TCPL:
ePASS:

130275CP03R1
5005948
004776-09-ML-03-094
10050542

REV. 1

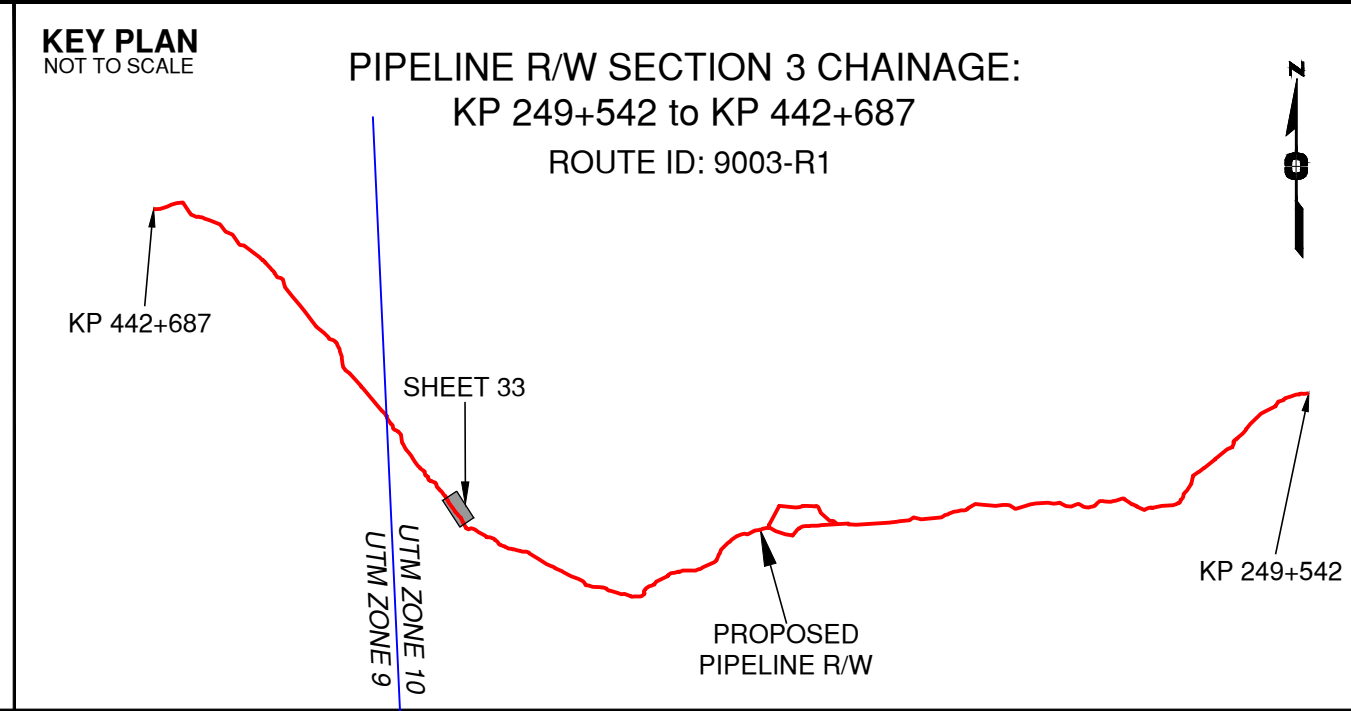


Rev	Revision Description	Date(Y/M/D)	By
0	Original Plan Prepared	2014/09/17	DC
1	Update P/L R/W (S4), Morrison Head - KP 436+715 to 440+846 Update Construction Corridor with Area Table & ePass Update Crossings, Scenery & Tenures	2015/01/14	DC

NOTES:

- Co-ordinates are NAD 83 Grid, UTM Zone 9 and Zone 10. Distances shown are in metres and decimals thereof. Chainages are two-dimensional and are on pipeline ditchline. Pipeline segment length derived from ditchline chainages.
- Fault Lines data has been provided from BGC Engineering Inc. Desktop Study dated December 20, 2013.
- Water crossing information has been provided by Stantec. Wetlands data has been provided by Stantec dated August 29, 2014. Freshwater Atlas wetlands outside of construction corridor have been removed from scenery.
- Cutblock data is confirmed using information from the Government of BC websites for Forest MapView and MapBC.
- This pipeline section is not within the Agricultural Land Reserve.
- Field Survey Completed December 15, 2014
- This plan represents the best information available at the time of survey. WSP Surveys and its employees take no responsibility for the location of any underground conduits, pipes, or other facilities whether shown on or omitted from this plan. All underground installations should be located by the respective authorities prior to construction.

LEGEND
Proposed Pipeline R/W shown thus:
Proposed Temp. Workspaces shown thus:
Proposed Log Decks & Storage Sites shown thus:
Right of Way shown thus:
Roads shown thus:
Highway shown thus:
Railway line shown thus:
Seismic line/trail shown thus:
Drainages shown thus:
Buried pipe shown thus:
Overhead powerline shown thus:
Fault Line shown thus:
Misc. Reserve/Notation bdy shown thus:
Misc. Licence/Permit bdy shown thus:
Stantec Wetland / Classification shown thus:
Riparian Management Zone shown thus:
Forest Cover Reserve shown thus:
Archaeological site shown thus:
Agricultural Land Reserve bdy shown thus:
Coal Tenure bdy shown thus:
Cutblock bdy shown thus:
Fence bdy shown thus:
Fish/Wildlife Reserve bdy shown thus:
Grazing Tenure bdy shown thus:
Mineral Claim bdy shown thus:
Tree Farm Licence shown thus:
Quarry Reserve bdy shown thus:
Ungulate Winter Range bdy shown thus:
Visual Land Inventory shown thus:
Watershed Reserve bdy shown thus:
Wind Tenure bdy shown thus:
Woodlot bdy shown thus:
Recreation Tenure shown thus:
Residential Tenure shown thus:
Residences shown thus:
Power Pole shown thus:
Culturally Modified Trees with Face shown thus:



APPROVED BY _____

PROJECT ENGINEER _____

No.	STATION	DESCRIPTION	OWNER
W01556	(S4)383+508	Trib to Tochcha Lake / S3 / RRZ = 20 RMZ = 20	ILMB
T00362	(S4)383+377	Forest Service Road (East Tochcha) / HGGR / FSR 5933 05	District Manager Nadina
W01555	(S4)382+871	Trib to Tochcha Lake / S4 / RRZ = 0 RMZ = 30	ILMB
W04109	(S4)381+737	Trail / Condition Unknown	ILMB
W01554	(S4)381+377	Trib to Tochcha Lake / S3 / RRZ = 20 RMZ = 20	ILMB
T00361	(S4)381+343	Forestry Road / LGGR / R12457 1	Canadian Forest Products Ltd
W04110	(S4)380+844	Water Course	ILMB
T01211	(S4)380+753	Water Course	Crown
W01553	(S4)380+217	Trib to Tochcha Lake / No visible channel	ILMB
No.	STATION	DESCRIPTION	OWNER

TABLE OF CROSSINGS

Prince Rupert Gas Transmission Project

TransCanada
In business to deliver

PRINCE RUPERT GAS TRANSMISSION LTD.

PROPOSED 32m PIPELINE R/W FROM a-18-A, 93-N-1 TO d-67-H, 93-K-14 (S1), d-67-H TO c-68-G, 93-K-14 (S2 & S3) & FROM c-68-G, 93-K-14 TO a-68-D, 93-M-8 (S4) (SHEET CHAINAGE: 380+047 TO 383+731)

Unsurveyed Crown Land/Crown Land/Private Land, Cassiar District & Range 5 Coast District

100 0 100 200 300 400

The intended plot size of this plan is 864mm in width by 560mm in height when plotted at a scale of 1 : 5000 (use D size sheet)

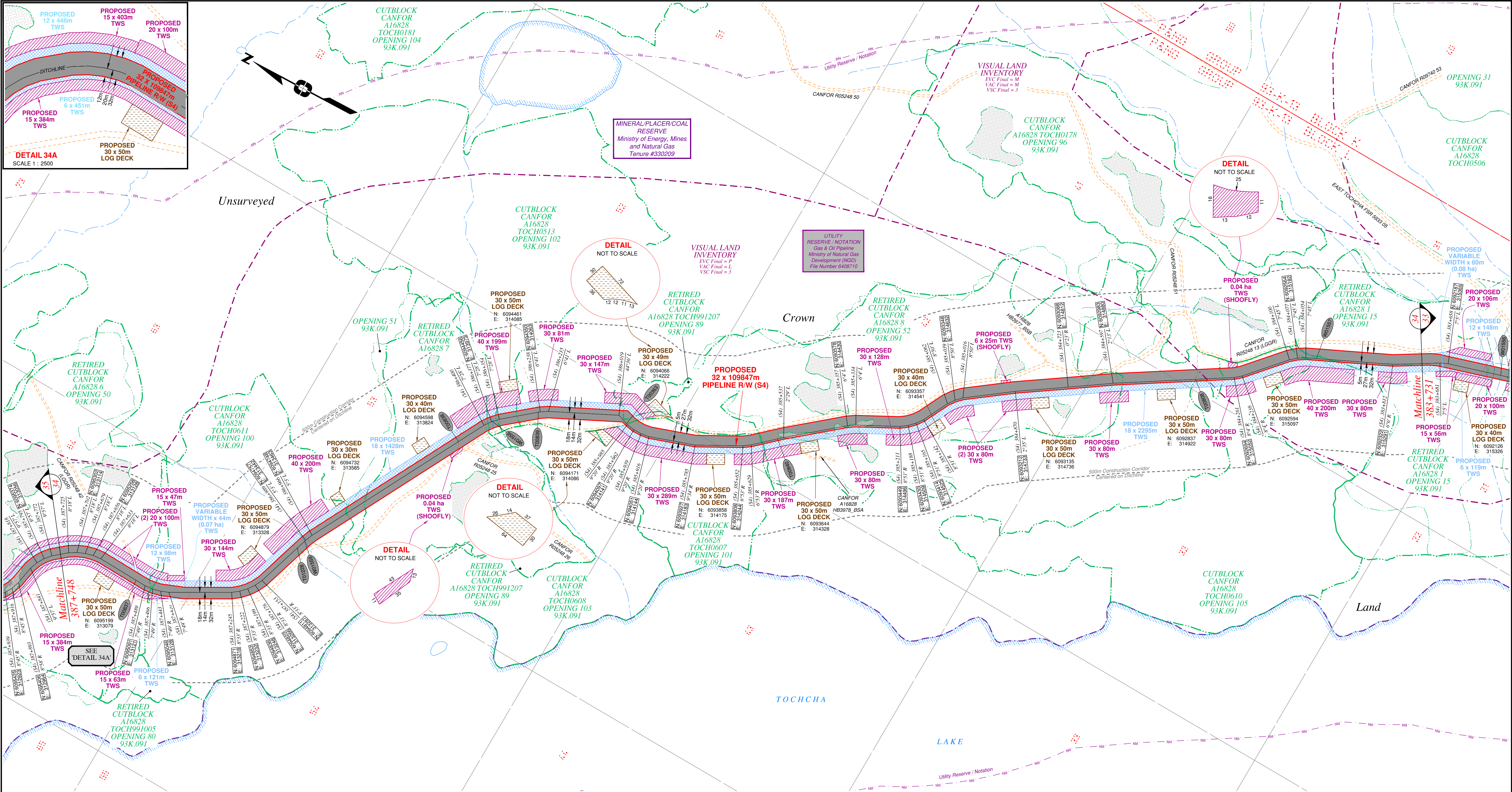
BCGS: 93K.081, 82, 83, 84, 85, 86, 87, 88, 89, 91, 94, 95, 96, 97, 99, 100 / 93M.010, 20, 28, 29, 30, 38 / 93N.001, 10

Sheet 33 of 51

WSP Surveys (BC) Limited Partnership
Fort St John BC
(250) 787-0300

WSP: 130275CP03R1
AFE: 5005948
TCPL: 004776-09-ML-03-095
ePASS: 10050542

REV. 1

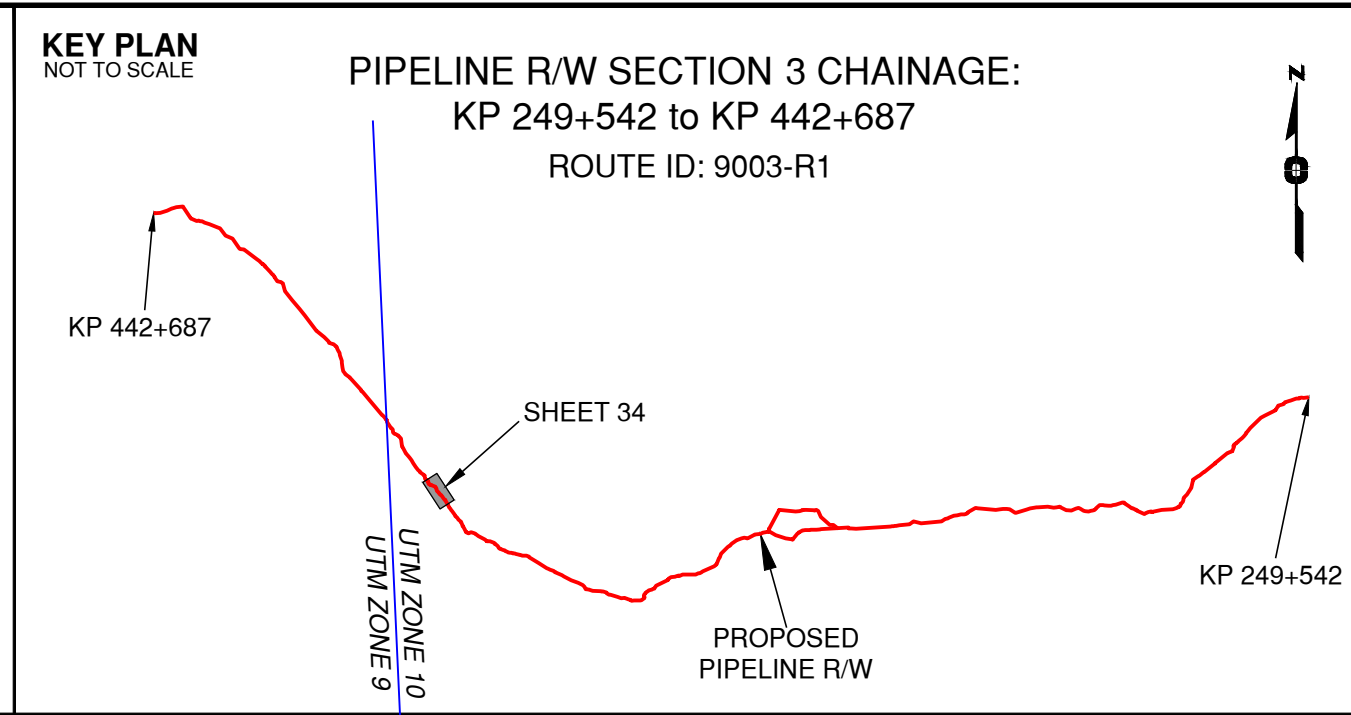


Rev	Revision Description	Date(Y/M/D)	By
0	Original Plan Prepared	2014/09/17	DC
1	Update P/L R/W (S4), Morrison Head - KP 436+715 to 440+846 Update Construction Corridor with Area Table & ePass Update Crossings, Scenery & Tenures	2015/01/14	DC

NOTES:

- Co-ordinates are NAD 83 Grid, UTM Zone 9 and Zone 10. Distances shown are in metres and decimals thereof. Chainages are two-dimensional and are on pipeline ditchline. Pipeline segment length derived from ditchline chainages.
- Fault Lines data has been provided from BGC Engineering Inc. Desktop Study dated December 20, 2013.
- Water crossing information has been provided by Stantec. Wetlands data has been provided by Stantec dated August 29, 2014. Freshwater Atlas wetlands outside of construction corridor have been removed from scenery.
- Cutblock data is confirmed using information from the Government of BC websites for Forest MapView and MapBC.
- This pipeline section is not within the Agricultural Land Reserve.
- Field Survey Completed December 15, 2014
- This plan represents the best information available at the time of survey. WSP Surveys and its employees take no responsibility for the location of any underground conduits, pipes, or other facilities whether shown on or omitted from this plan. All underground installations should be located by the respective authorities prior to construction.

LEGEND
Proposed Pipeline R/W shown thus:
Proposed Temp. Workspaces shown thus:
Proposed Log Decks & Storage Sites shown thus:
Right of Way shown thus:
Roads shown thus:
Highway shown thus:
Railway line shown thus:
Seismic line/trail shown thus:
Recreation Tenure shown thus:
Drainages shown thus:
Buried cable shown thus:
Overhead powerline shown thus:
Riparian Reserve Zone shown thus:
Riparian Management Zone shown thus:
Forest Cover Reserve shown thus:
Archaeological site shown thus:
Agricultural Land Reserve body shown thus:
Coal Tenure body shown thus:
Culturally Modified Trees with Face shown thus:
Fish/Wildlife Reserve body shown thus:
Grazing Tenure body shown thus:
Mineral Claim body shown thus:
Tree Farm Licence shown thus:
Quarry Reserve body shown thus:
Ungulate Winter Range body shown thus:
Visual Land Inventory shown thus:
Watershed Reserve body shown thus:
Wind Tenure body shown thus:
Woodlot body shown thus:
Fault Line shown thus:
Misc. Reserve/Notation body shown thus:
Misc. Licence/Permit body shown thus:
Stantec Wetland / Classification shown thus:
Crossings shown thus:
Old Growth Management Area shown thus:
Residences shown thus:
Power Pole shown thus:
Fence body shown thus:



APPROVED BY
PROJECT ENGINEER

No.	STATION	DESCRIPTION	TABLE OF CROSSINGS
T00837	(S4)387+518	Forestry Road / LGGR / R05248 42	N 6095121 E 313123 Canadian Forest Products Ltd
T01228	(S4)387+021	Trail / Condition Unknown	N 6094788 E 313412 Crown
W01559	(S4)386+980	Trib to Tochcha Lake / Non-classified drainage	N 6094788 E 313439 ILMB
T00838	(S4)386+484	Trail / Condition Unknown	N 6094511 E 313893 Crown
W01558	(S4)386+374	Trib to Tochcha Lake / S6 / RRZ = 20	N 6094454 E 313977 ILMB
T00839	(S4)386+244	Trail / Condition Unknown	N 6094354 E 314059 Crown
T00863	(S4)385+989	Forestry Road / LGGR / R05248 13	N 6094123 E 314147 Canadian Forest Products Ltd
T00840	(S4)385+555	Forestry Road / Condition Unknown / A16828 HB3978, BSA	N 6093733 E 314306 Canadian Forest Products Ltd
W01557	(S4)384+369	Trail / Condition Unknown	N 6092786 E 314997 Crown
W01557	(S4)384+024	Trib to Tochcha Lake / Non-classified drainage	N 6092517 E 315206 ILMB
No.	STATION	DESCRIPTION	NAD 83 UTM ZONE 10 OWNER

Prince Rupert Gas Transmission Project

PRINCE RUPERT GAS TRANSMISSION LTD.

PROPOSED 32m PIPELINE R/W FROM a-18-A, 93-N-1 TO d-67-H, 93-K-14 (S1), d-67-H TO c-68-G, 93-K-14 (S2 & S3) & FROM c-68-G, 93-K-14 TO a-68-D, 93-M-8 (S4) (SHEET CHAINAGE: 383+731 TO 387+748)

Unsurveyed Crown Land/Crown Land/Private Land, Cassiar District & Range 5 Coast District

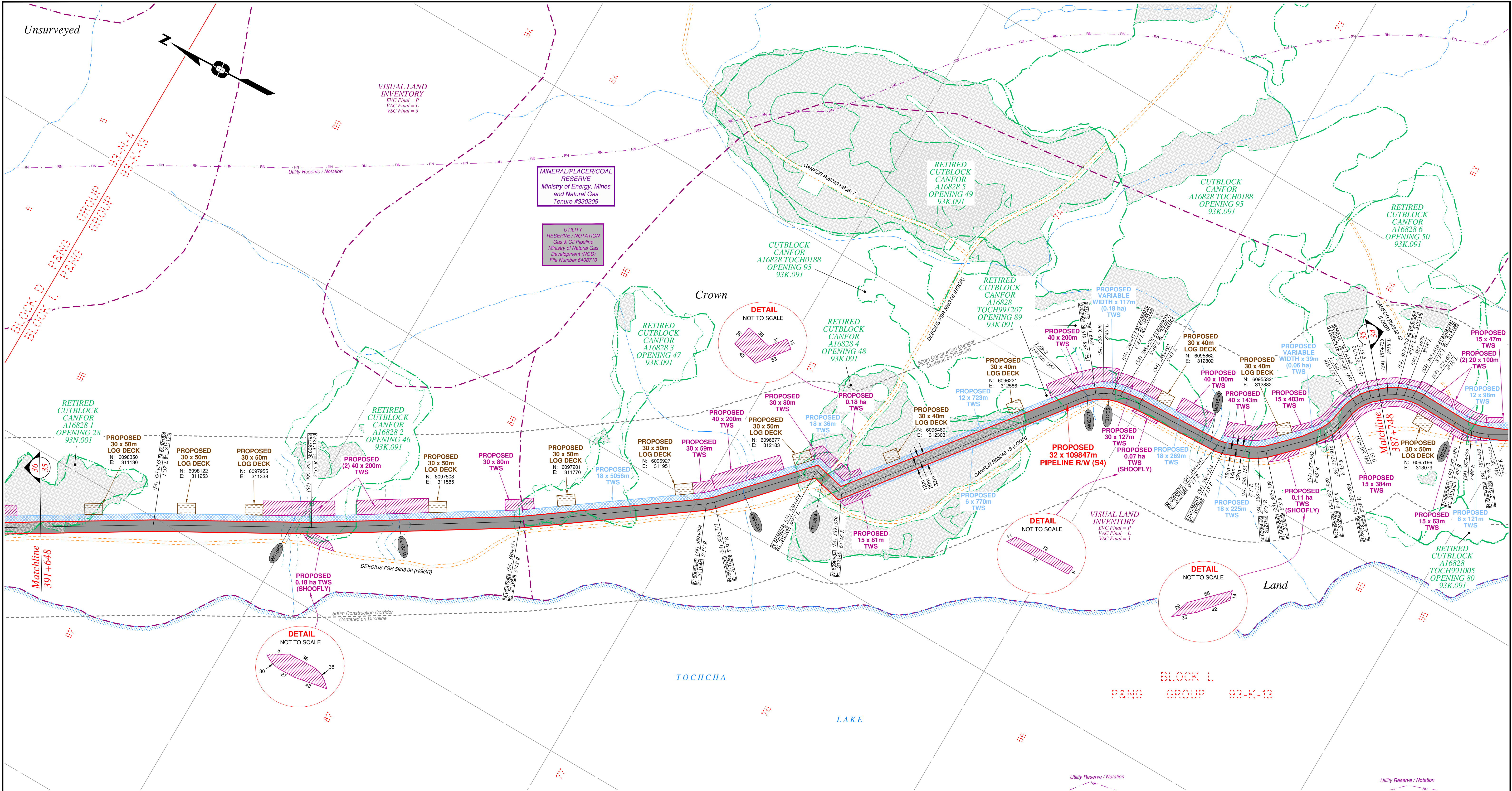
The intended plot size of this plan is 864mm in width by 560mm in height when plotted at a scale of 1: 5000 (use D size sheet)

BCGS: 93K.081, 82, 83, 84, 85, 86, 87, 88, 89, 91, 94, 95, 96, 97, 99, 100 / 93M.010, 20, 28, 29, 30, 38 / 93N.001, 10 Sheet 34 of 51

WSP Surveys (BC) Limited Partnership
Fort St John BC
(250) 787-0300

WSP: 130275CP03R1
AFE: 5005948
TCPL: 004776-09-ML-03-096
ePASS: 10050542

REV. 1

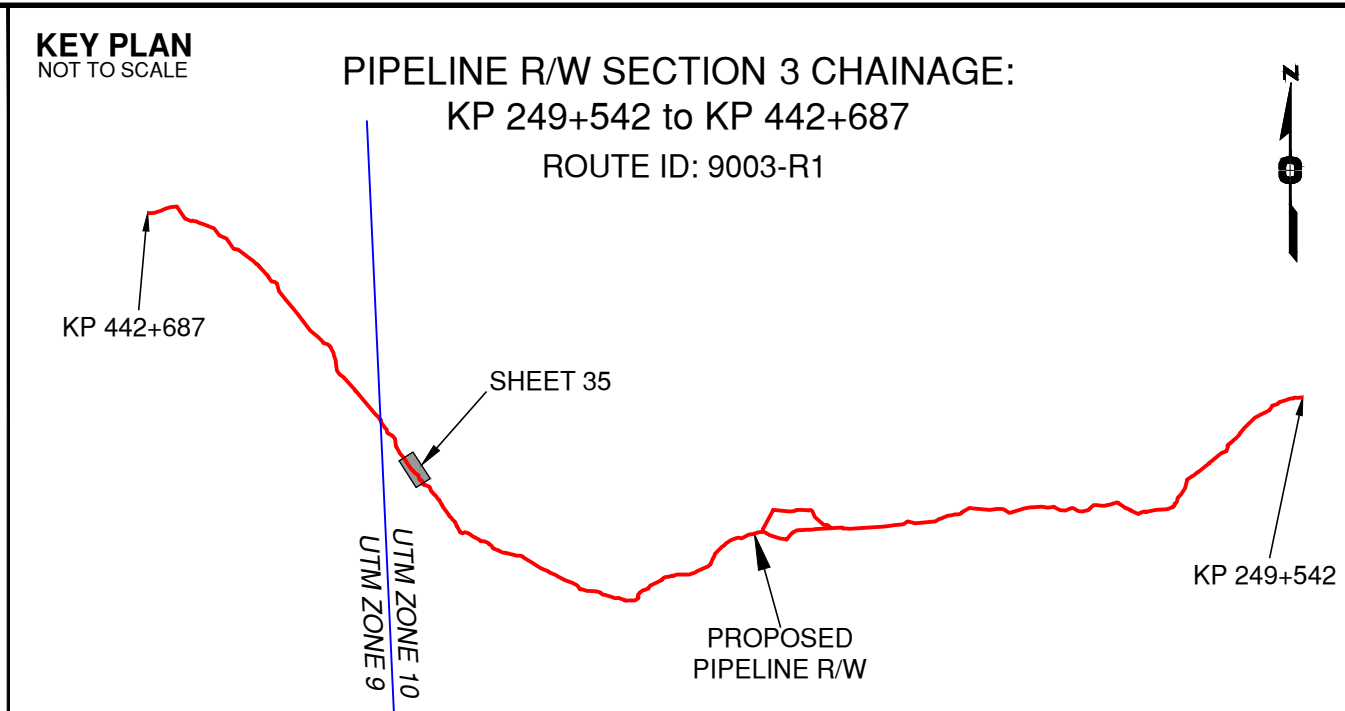


Rev	Revision Description	Date(Y/M/D)	By
0	Original Plan Prepared	2014/09/17	DC
1	Update P/L R/W (S4), Morrison Head - KP 436+715 to 440+846 Update Construction Corridor with Area Table & ePass Update Crossings, Scenery & Tenures	2015/01/14	DC

NOTES:

- Co-ordinates are NAD 83 Grid, UTM Zone 9 and Zone 10. Distances shown are in metres and decimals thereof. Chainages are two-dimensional and are on pipeline ditchline. Pipeline segment length derived from ditchline chainages.
- Fault Lines data has been provided from BGC Engineering Inc. Desktop Study dated December 20, 2013.
- Water crossing information has been provided by Stantec. Wetlands data has been provided by Stantec dated August 29, 2014. Freshwater Atlas wetlands outside of construction corridor have been removed from scenery.
- Cutblock data is confirmed using information from the Government of BC websites for Forest MapView and MapBC.
- This pipeline section is not within the Agricultural Land Reserve.
- Field Survey Completed December 15, 2014
- This plan represents the best information available at the time of survey. WSP Surveys and its employees take no responsibility for the location of any underground conduits, pipes, or other facilities whether shown on or omitted from this plan. All underground installations should be located by the respective authorities prior to construction.

LEGEND
Proposed Pipeline R/W shown thus:
Proposed Temp. Workspaces shown thus:
Proposed Log Decks & Storage Sites shown thus:
Right of Way shown thus:
Roads shown thus:
Highway shown thus:
Railway line shown thus:
Seismic line/trail shown thus:
Recreation Tenure shown thus:
Drainages shown thus:
Buried cable shown thus:
Buried pipe shown thus:
Overhead powerline shown thus:
Riparian Reserve Zone shown thus:
Forest Cover Reserve shown thus:
Archaeological site shown thus:
Agricultural Land Reserve shown thus:
Coal Tenure shown thus:
Cutblock body shown thus:
Fence body shown thus:
Fish/Wildlife Reserve body shown thus:
Grazing Tenure body shown thus:
Mineral Claim body shown thus:
Tree Farm Licence shown thus:
Quarry Reserve body shown thus:
Ungulate Winter Range body shown thus:
Visual Land Inventory shown thus:
Watershed Reserve body shown thus:
Wind Tenure body shown thus:
Woodlot body shown thus:
Fault Line shown thus:
Misc. Reserve/Notation body shown thus:
Misc. Licence/Permit body shown thus:
Stantec Wetland / Classification shown thus:
Crossings shown thus:
Old Growth Management Area shown thus:
Residences shown thus:
Power Pole shown thus:
Culturally Modified Trees with Face shown thus:



APPROVED BY
PROJECT ENGINEER

No.	STATION	DESCRIPTION	OWNER
W01563	(S4)390+953	Trib to Tochcha Lake / S6 / RRZ = 0 RMZ = 20	ILMB
W02770	(S4)390+651	Trib to Tochcha Lake / S6 / RRZ = 0 RMZ = 20	ILMB
W01562	(S4)389+686	Forest Service Road (Deecius) / HGGR / FSR 5933 06	ILMB
T00364	(S4)389+449	Forest Service Road (Deecius) / HGGR / FSR 5933 06	District Manager Nadina
W02771	(S4)388+644	Trib to Tochcha Lake / S4 / RRZ = 0 RMZ = 30	ILMB
T01205	(S4)388+581	Trail / Overgrown	Crown
W01560	(S4)388+267	Trib to Tochcha Lake / S3 / RRZ = 20 RMZ = 20	ILMB

TABLE OF CROSSINGS

Prince Rupert Gas Transmission Project

TransCanada
In business to deliver

PRINCE RUPERT GAS TRANSMISSION LTD.

PROPOSED 32m PIPELINE R/W FROM a-18-A, 93-N-1 TO d-67-H, 93-K-14 (S1), d-67-H TO c-68-G, 93-K-14 (S2 & S3) & FROM c-68-G, 93-K-14 TO a-68-D, 93-M-8 (S4) (SHEET CHAINAGE: 387+748 TO 391+648)

Unsurveyed Crown Land/Crown Land/Private Land, Cassiar District & Range 5 Coast District

The intended plot size of this plan is 864mm in width by 560mm in height when plotted at a scale of 1: 5000 (use D size sheet)

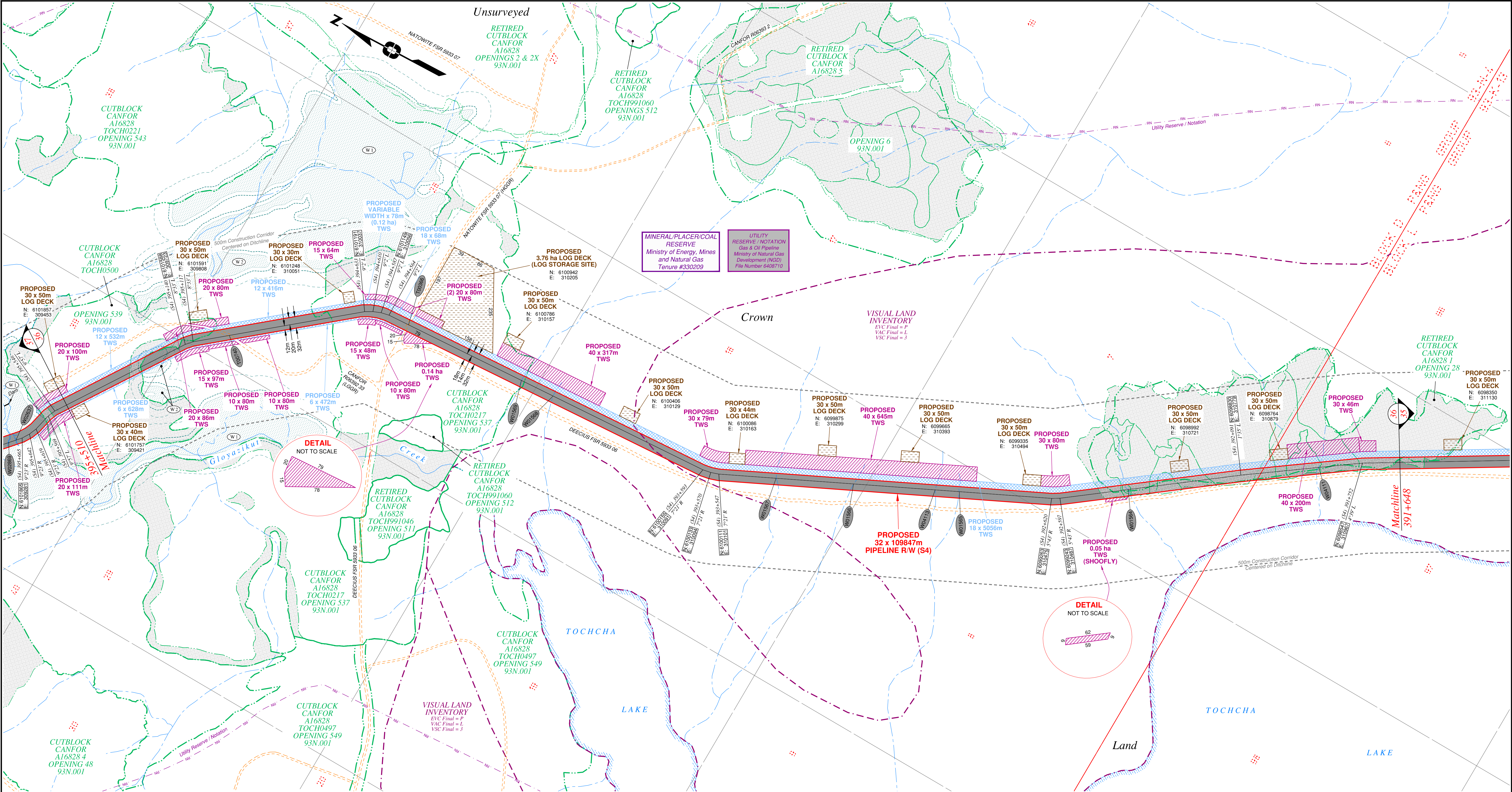
BCGS: 93K.081, 82.83, 84.85, 86.87, 88.89, 91.94, 95.96, 97.99, 100 / 93M.010, 20.28, 29.30, 38 / 93N.001, 10.1

Sheet 35 of 51

WSP Surveys (BC) Limited Partnership
Fort St John BC
(250) 787-0300

WSP: 130275CP03R1
AFE: 5005948
TCPL: 004776-09-ML-03-097
ePASS: 10050542

REV. 1

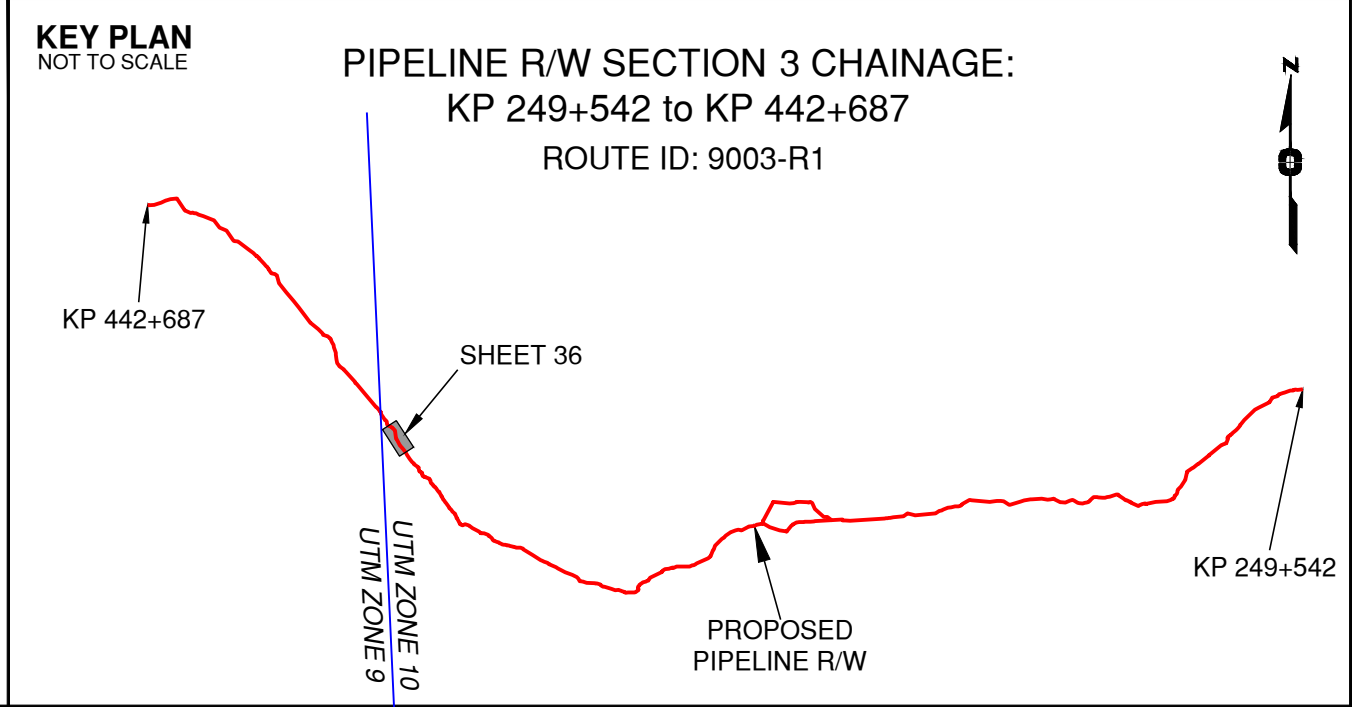


Rev	Revision Description	Date(Y/M/D)	By
0	Original Plan Prepared	2014/09/17	DC
1	Update P/L R/W (S4), Morrison Head - KP 436+715 to 440+846 Update Construction Corridor with Area Table & ePass Update Crossings, Scenery & Tenures	2015/01/14	DC

NOTES:

- Co-ordinates are NAD 83 Grid, UTM Zone 9 and Zone 10. Distances shown are in metres and decimals thereof. Chainages are two-dimensional and are on pipeline ditchline. Pipeline segment length derived from ditchline chainages.
- Fault Lines data has been provided from BGC Engineering Inc. Desktop Study dated December 20, 2013.
- Water crossing information has been provided by Stantec. Wetlands data has been provided by Stantec dated August 29, 2014. Freshwater Atlas wetlands outside of construction corridor have been removed from scenery.
- Cutblock data is confirmed using information from the Government of BC websites for Forest MapView and MapBC.
- This pipeline section is not within the Agricultural Land Reserve.
- Field Survey Completed December 15, 2014
- This plan represents the best information available at the time of survey. WSP Surveys and its employees take no responsibility for the location of any underground conduits, pipes, or other facilities whether shown on or omitted from this plan. All underground installations should be located by the respective authorities prior to construction.

LEGEND
Proposed Pipeline R/W shown thus:
Proposed Temp. Workspaces shown thus:
Proposed Log Decks & Storage Sites shown thus:
Right of Way shown thus:
Roads shown thus:
Highway shown thus:
Railway line shown thus:
Seismic line/trail shown thus:
Drainages shown thus:
Buried cable shown thus:
Buried pipe shown thus:
Overhead powerline shown thus:
Forest Cover Reserve shown thus:
Archaeological site shown thus:
Agricultural Land Reserve bdy shown thus:
Coal Tenure bdy shown thus:
Cutblock bdy shown thus:
Fence bdy shown thus:
Fish/Wildlife Reserve bdy shown thus:
Grazing Tenure bdy shown thus:
Mineral Claim bdy shown thus:
Tree Farm Licence shown thus:
Quarry Reserve bdy shown thus:
Ungulate Winter Range bdy shown thus:
Visual Land Inventory shown thus:
Watershed Reserve bdy shown thus:
Wind Tenure bdy shown thus:
Woodlot bdy shown thus:
Fault Line shown thus:
Misc. Reserve/Notation bdy shown thus:
Misc. Licence/Permit bdy shown thus:
Stantec Wetland / Classification shown thus:
Crossings shown thus:
Old Growth Management Area shown thus:
Residences shown thus:
Power Pole shown thus:
Culturally Modified Trees with Face shown thus:



APPROVED BY
PROJECT ENGINEER

No.	STATION	DESCRIPTION	UTM ZONE	OWNER
T00740	(S4)395+015	Forestry Road / LGGR / R06392.33	N 6101491 E 309802	Canadian Forest Products Ltd
T00366	(S4)394+504	Forest Service Road (Natoiwite) / HGGR / FSR 9933.07	N 6101066 E 310052	District Manager Nadina
W01569	(S4)394+155	Trib to Gloyazkui Creek / Non-classified drainage	N 6100717 E 310073	ILMB
W01568	(S4)394+057	Trib to Tochcha Lake / Non-classified drainage	N 6100619 E 310076	ILMB
W01567	(S4)393+388	Trib to Tochcha Lake / Non-classified drainage	N 6099965 E 310165	ILMB
W01566	(S4)393+172	Trib to Tochcha Lake / Non-classified drainage	N 6099768 E 310252	ILMB
W04113	(S4)392+945	Water Course	N 6099560 E 310344	ILMB
W01565	(S4)392+878	Trib to Tochcha Lake / No visible channel	N 6099499 E 310371	ILMB
W01564	(S4)392+406	Trib to Tochcha Lake / No visible channel	N 6099087 E 310587	ILMB
W04111	(S4)391+875	Water Course	N 6098650 E 310899	ILMB
No.	STATION	DESCRIPTION	NAD 83 UTM ZONE 10	OWNER

TABLE OF CROSSINGS

Prince Rupert
Gas Transmission Project

TransCanada
In business to deliver

PRINCE RUPERT GAS TRANSMISSION LTD.

PROPOSED 32m PIPELINE R/W FROM a-18-A, 93-N-1 TO d-67-H, 93-K-14 (S1), d-67-H TO c-68-G, 93-K-14 (S2 & S3) & FROM c-68-G, 93-K-14 TO a-68-D, 93-M-8 (S4) (SHEET CHAINAGE: 391+648 TO 395+510)

Unsurveyed Crown Land/Crown Land/Private Land, Cassiar District & Range 5 Coast District

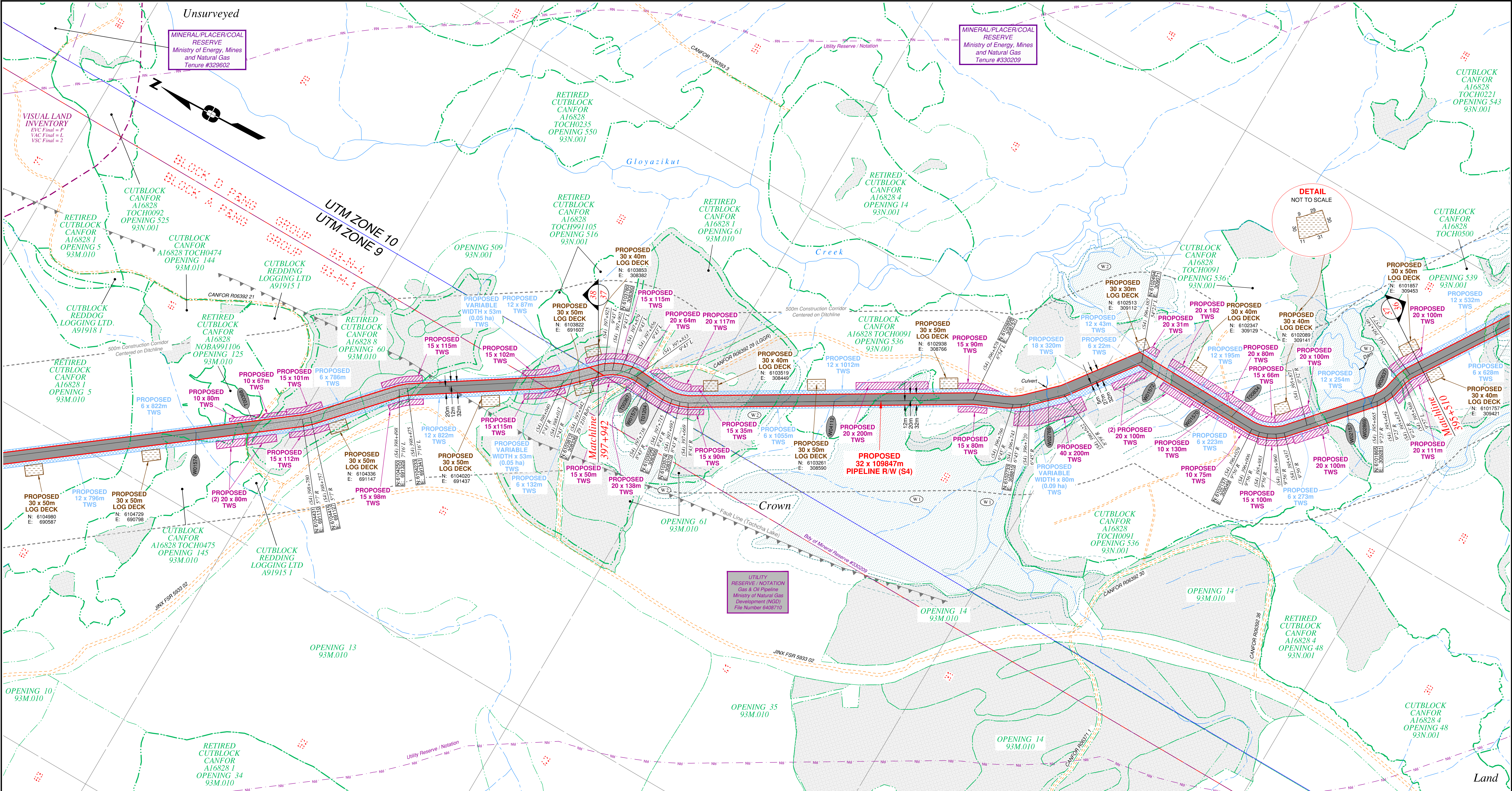
The intended plot size of this plan is 864mm in width by 560mm in height when plotted at a scale of 1: 5000 (use D size sheet)

BCGS: 93K.081,82,83,84,85,86,87,88,89,91,94,95,96,97,99,100 / 93M.010,20,28,29,30,38 / 93N.001,10 Sheet 36 of 51

WSP Surveys (BC) Limited Partnership
Fort St John BC (250) 787-0300

WSP: 130275CP03R1
AFC: 5005948
TCPL: 004776-09-ML-03-098
ePASS: 10050542

REV. 1

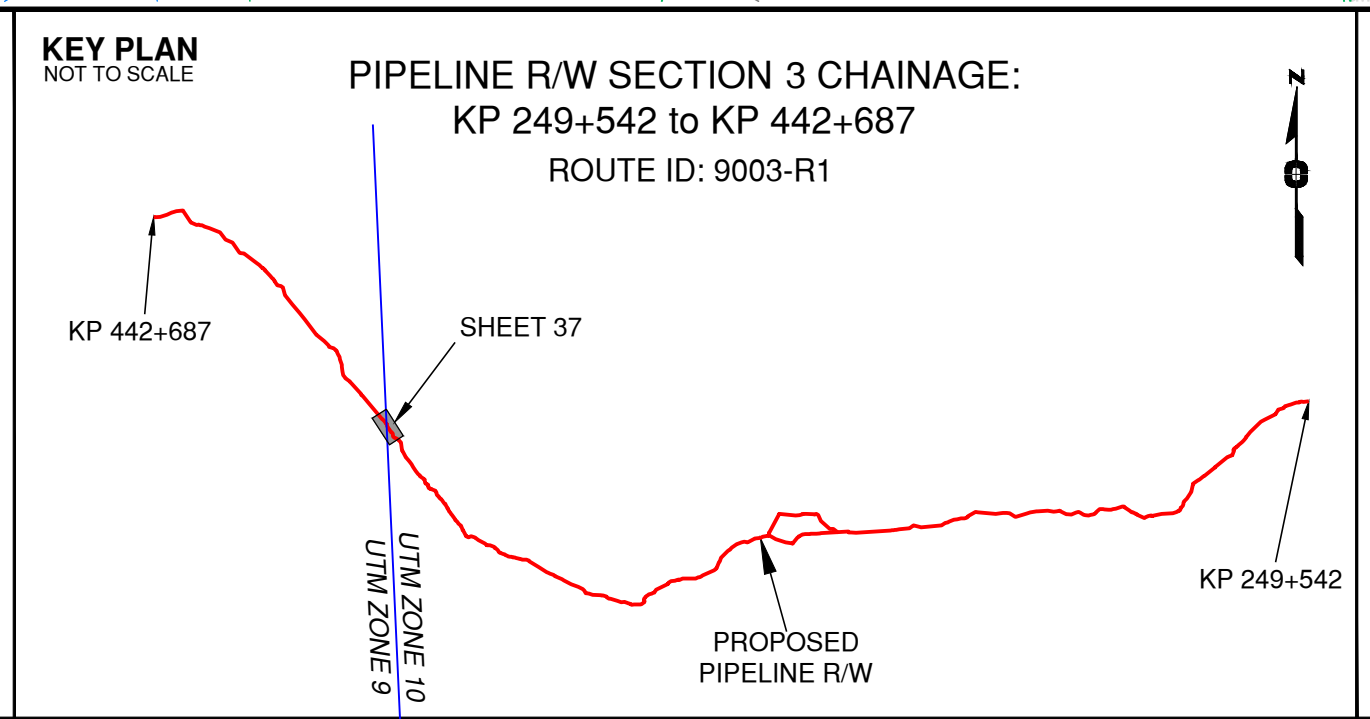


Rev	Revision Description	Date(Y/M/D)	By
0	Original Plan Prepared	2014/09/17	DC
1	Update P/L R/W (S4), Morrison Head - KP 436+715 to 440+846 Update Construction Corridor with Area Table & ePass Update Crossings, Scenery & Tenures	2015/01/14	DC

NOTES:

- Co-ordinates are NAD 83 Grid. UTM Zone 9 and Zone 10. Distances shown are in metres and decimals thereof. Chainages are two-dimensional and are on pipeline ditchline. Pipeline segment length derived from BGC Engineering Inc. Desktop Study dated December 20, 2013.
- Fault Lines data has been provided from BGC Engineering Inc. Desktop Study dated December 20, 2013.
- Water crossing information has been provided by Stantec. Wetlands data has been provided by Stantec dated August 29, 2014. Freshwater Atlas wetlands outside of construction corridor have been removed from scenery.
- Cutblock data is confirmed using information from the Government of BC websites for Forest MapView and MapBC.
- This pipeline section is not within the Agricultural Land Reserve.
- Field Survey Completed December 15, 2014
- This plan represents the best information available at the time of survey. WSP Surveys and its employees take no responsibility for the location of any underground conduits, pipes, or other facilities whether shown on or omitted from this plan. All underground installations should be located by the respective authorities prior to construction.

LEGEND
Proposed Pipeline R/W shown thus:
Proposed Temp. Workspaces shown thus:
Proposed Log Decks & Storage Sites shown thus:
Right of Way shown thus:
Roads shown thus:
Highway shown thus:
Railway line shown thus:
Seismic line/trail shown thus:
Recreation Tenure shown thus:
Drainages shown thus:
Buried cable shown thus:
Buried pipe shown thus:
Overhead powerline shown thus:
Forest Cover Reserve shown thus:
Archaeological site shown thus:
Agricultural Land Reserve shown thus:
Coal Tenure by shown thus:
Cutblock shown thus:
Fence body shown thus:
Fish/Wildlife Reserve body shown thus:
Grazing Tenure body shown thus:
Mineral Claim body shown thus:
Tree Farm Licence shown thus:
Quarry Reserve body shown thus:
Ungulate Winter Range body shown thus:
Visual Land Inventory shown thus:
Watershed Reserve body shown thus:
Wind Tenure body shown thus:
Woodlot body shown thus:
Fault Line shown thus:
Misc. Reserve/Notation body shown thus:
Misc. Licence/Permit body shown thus:
Stantec Wetland / Classification shown thus:
Crossings shown thus:
Old Growth Management Area shown thus:
Residences shown thus:
Power Pole shown thus:
Culturally Modified Trees with Face shown thus:



APPROVED BY
PROJECT ENGINEER

No.	STATION	DESCRIPTION	NAD 83 UTM ZONE 10	OWNER
T00367	(S4)397+828	Forestry Road / LGGR / R06392 29	N 6103708 E 308375	Canadian Forest Products Ltd
W01573	(S4)397+794	Trib to Gloyazikut Creek / No visible channel	N 6103675 E 308371	ILMB
T01204	(S4)397+793	Trail / Condition Unknown	N 6103673 E 308371	Crown
W04112	(S4)397+264	Water Course	N 6103195 E 308572	ILMB
W02769	(S4)396+668	Trib to Gloyazikut Creek / S4 / RRZ = 0 RMZ = 30	N 6102676 E 308558	ILMB
W01572	(S4)396+331	Trib to Gloyazikut Creek / S3 / RRZ = 20 RMZ = 20	N 6102437 E 309057	ILMB
W01570	(S4)396+178	Trib to Gloyazikut Creek / S1 / RRZ = 50 RMZ = 20	N 6102285 E 309058	ILMB
T00834	(S4)396+096	Trail / Condition Unknown	N 6102202 E 309053	Crown
W02157	(S4)395+752	Gloyazikut Creek / S4 / RRZ = 0 RMZ = 20	N 6101925 E 309217	ILMB
W02869	(S4)395+704	Gloyazikut Creek / S4 / RRZ = 0 RMZ = 30	N 6101878 E 309252	ILMB
W02637	(S4)395+683	Gloyazikut Creek / S4 / RRZ = 0 RMZ = 30	N 6101878 E 309268	ILMB
No.	STATION	DESCRIPTION	NAD 83 UTM ZONE 10	OWNER

TABLE OF CROSSINGS

Prince Rupert
Gas Transmission Project

TransCanada
In business to deliver

PRINCE RUPERT GAS TRANSMISSION LTD.

PROPOSED 32m PIPELINE R/W FROM a-18-A, 93-N-1 TO d-67-H, 93-K-14 (S1), d-67-H TO c-68-G, 93-K-14 (S2 & S3) & FROM c-68-G, 93-K-14 TO a-68-D, 93-M-8 (S4) (SHEET CHAINAGE: 395+510 TO 397+942)

Unsurveyed Crown Land/Crown Land/Private Land, Cassiar District & Range 5 Coast District

The intended plot size of this plan is 864mm in width by 560mm in height when plotted at a scale of 1: 5000 (use D size sheet)

BCGS: 93K-081, 82, 83, 84, 85, 86, 87, 88, 89, 91, 94, 95, 96, 97, 99, 100 / 93M-010, 20, 28, 29, 30, 38 / 93N-001, 10

Sheet 37 of 51

WSP Surveys (BC) Limited Partnership Fort St John BC (250) 787-0300	WSP: 130275CP03R1 AFE: 5005948 TCPL: 004776-09-ML-03-099 ePASS: 10050542	REV. 1
---	---	--------