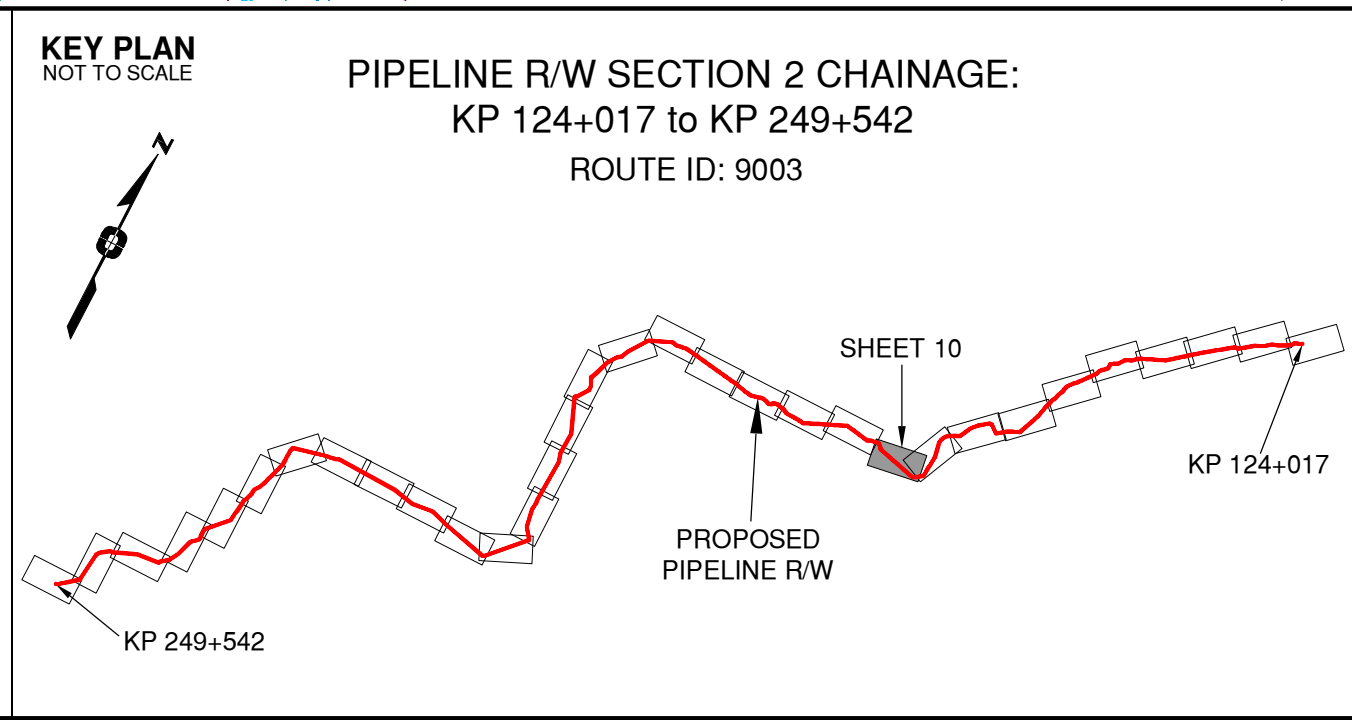


Rev	Revision Description	Date(Y/M/D)	By
0	Original Plan Prepared	2014/09/12	DC
1	Construction Plan Based on Rev.0 (2014/09/12) Except for New Construction Corridor: Shape, Label, Area Table & ePass	2014/12/31	DC

NOTES:

- Co-ordinates are NAD 83 Grid, UTM Zone 9 and Zone 10. Distances shown are in metres and decimals thereof. Chainages are two-dimensional and are on pipeline ditchline. Pipeline segment length derived from ditchline chainages.
- Fault Lines data has been provided from BGC Engineering Inc. Desktop Study dated December 20, 2013.
- Water crossing information has been provided by Stantec. Wetlands data has been provided by Stantec dated August 29, 2014. Freshwater Atlas wetlands outside of construction corridor have been removed from scenery.
- Cutblock data is confirmed using information from the Government of BC websites for Forest MapView and MapBC.
- This pipeline section is not within the Agricultural Land Reserve.
- Field Survey Completed July 15, 2014
- This plan represents the best information available at the time of survey. Focus Surveys and its employees take no responsibility for the location of any underground conduits, pipes, or other facilities whether shown on or omitted from this plan. All underground installations should be located by the respective authorities prior to construction.

LEGEND
Proposed Pipeline R/W shown thus:
Proposed Temp. Workspaces shown thus:
Proposed Log Decks & Storage Sites shown thus:
Right of Way shown thus:
Roads shown thus:
Highway shown thus:
Railway line shown thus:
Seismic line/trail shown thus:
Recreation Tenure shown thus:
Drainages shown thus:
Buried cable shown thus:
Buried pipe shown thus:
Overhead powerline shown thus:
Riparian Reserve Zone shown thus:
Forest Cover Reserve shown thus:
Archaeological site shown thus:
Agricultural Land Reserve body shown thus:
Coal Tenure body shown thus:
Cutblock body shown thus:
Fence body shown thus:
Fish/Wildlife Reserve body shown thus:
Grazing Tenure body shown thus:
Mineral Claim body shown thus:
Tree Farm Licence shown thus:
Quarry Reserve body shown thus:
Ungulate Winter Range body shown thus:
Visual Land Inventory shown thus:
Watershed Reserve body shown thus:
Wind Tenure body shown thus:
Woodlot body shown thus:
Fault Line shown thus:
Misc. Reserve/Notation body shown thus:
Misc. Licence/Permit body shown thus:
Stanlec Wetland / Classification shown thus:
Crossings shown thus:
Old Growth Management Area shown thus:
Residences shown thus:
Power Pole shown thus:



APPROVED BY
PROJECT ENGINEER

No.	STATION	DESCRIPTION	OWNER
T00176	163+939	Trail / Condition Unknown	Crown
W01220	163+896	Trib to Williston Lake / S6 / RRZ = 0 RMZ = 20	ILMB
W01219	163+474	Trib to Williston Lake / S3 / RRZ = 20 RMZ = 20	ILMB
W02875	163+275	Trib to Williston Lake / S3 / RRZ = 20 RMZ = 20	ILMB
W01218	163+079	Trib to Williston Lake / S6 / RRZ = 0 RMZ = 20	ILMB
W01217	162+770	Trib to Williston Lake / S6 / RRZ = 0 RMZ = 20	ILMB
W01216	162+592	Trib to Williston Lake / No visible channel	ILMB
T00175	162+509	Trail / Condition Unknown	Crown
W01214	161+031	Water Body / Williston Lake / L1	ILMB
W00174	160+097	Trail / Condition Unknown	Crown
No.	STATION DESCRIPTION		NAD 83 UTM ZONE 10

Prince Rupert  
Gas Transmission Project

**PRINCE RUPERT GAS TRANSMISSION LTD.**

PROPOSED VARIABLE WIDTH (32 to 67m) PIPELINE R/W  
FROM b-89-C, 93-O-10 TO a-18-A, 93-N-1  
(SHEET CHAINAGE: 159+378 TO 163+962)

Unsurveyed Crown Land, Peace River District

BCGS: 93N.010, 93O.001/011/012/022/032/033/034/035/045/055/056

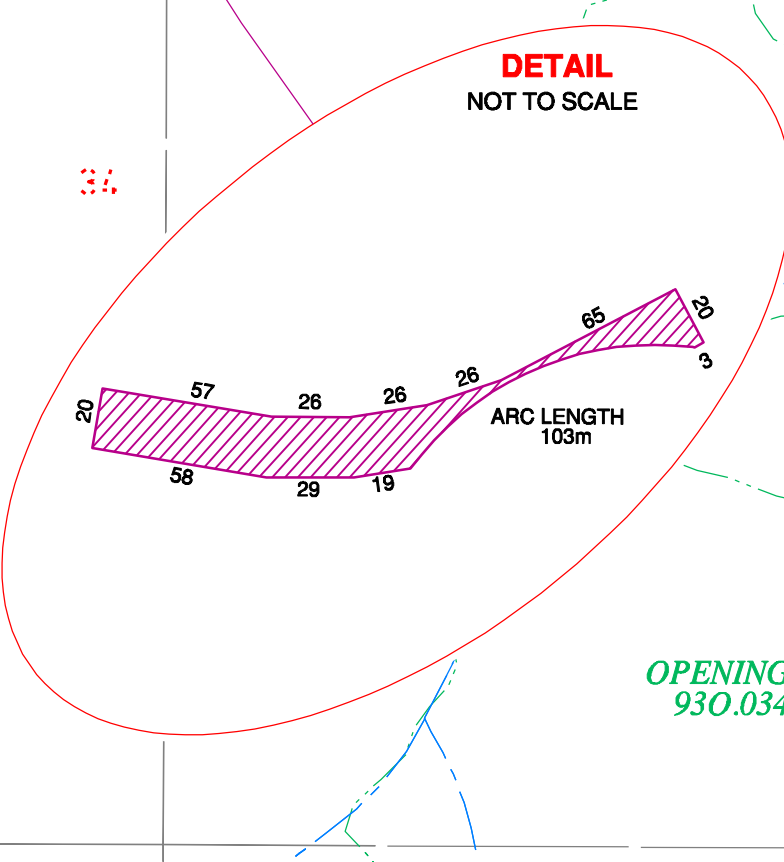
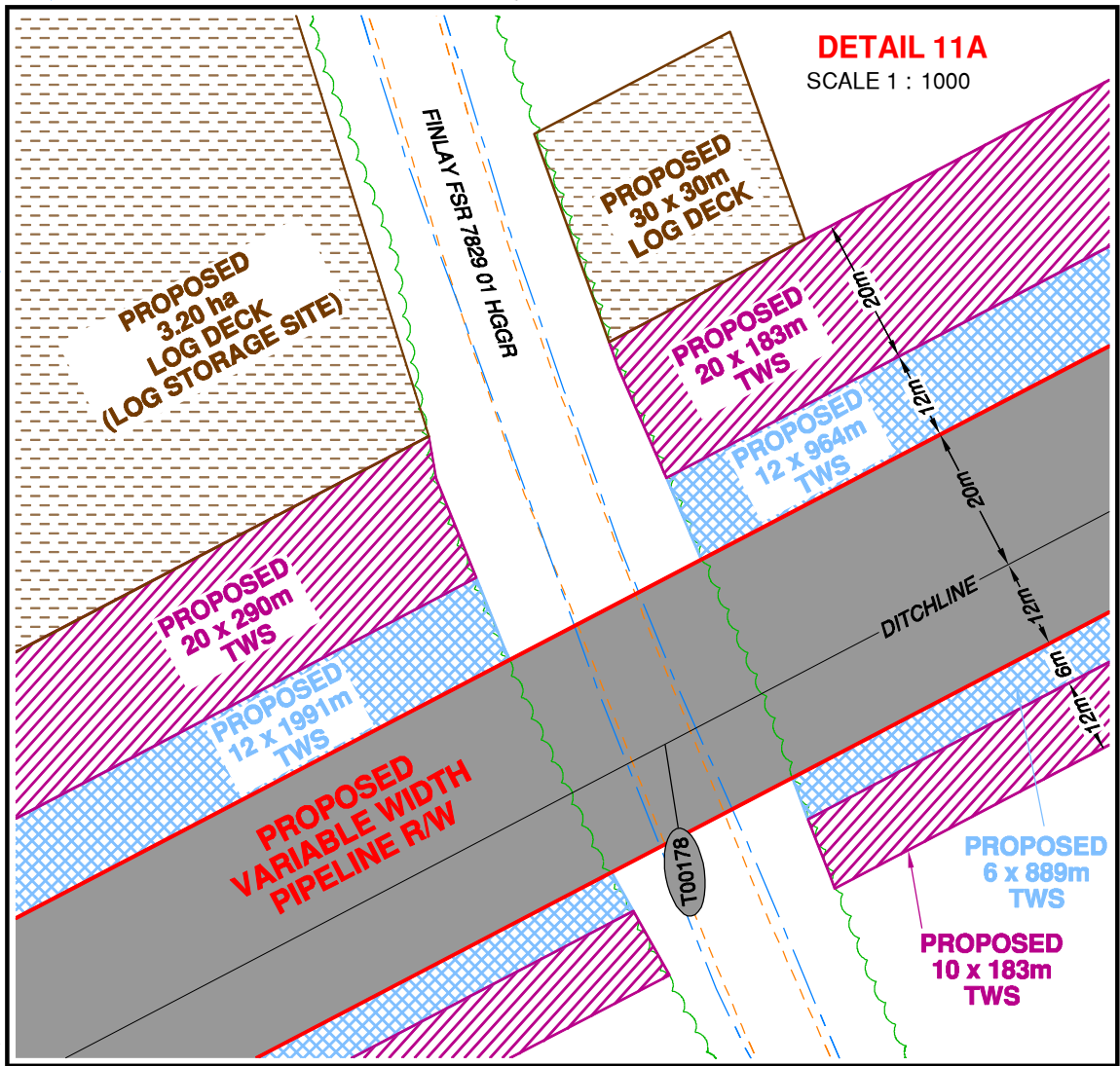
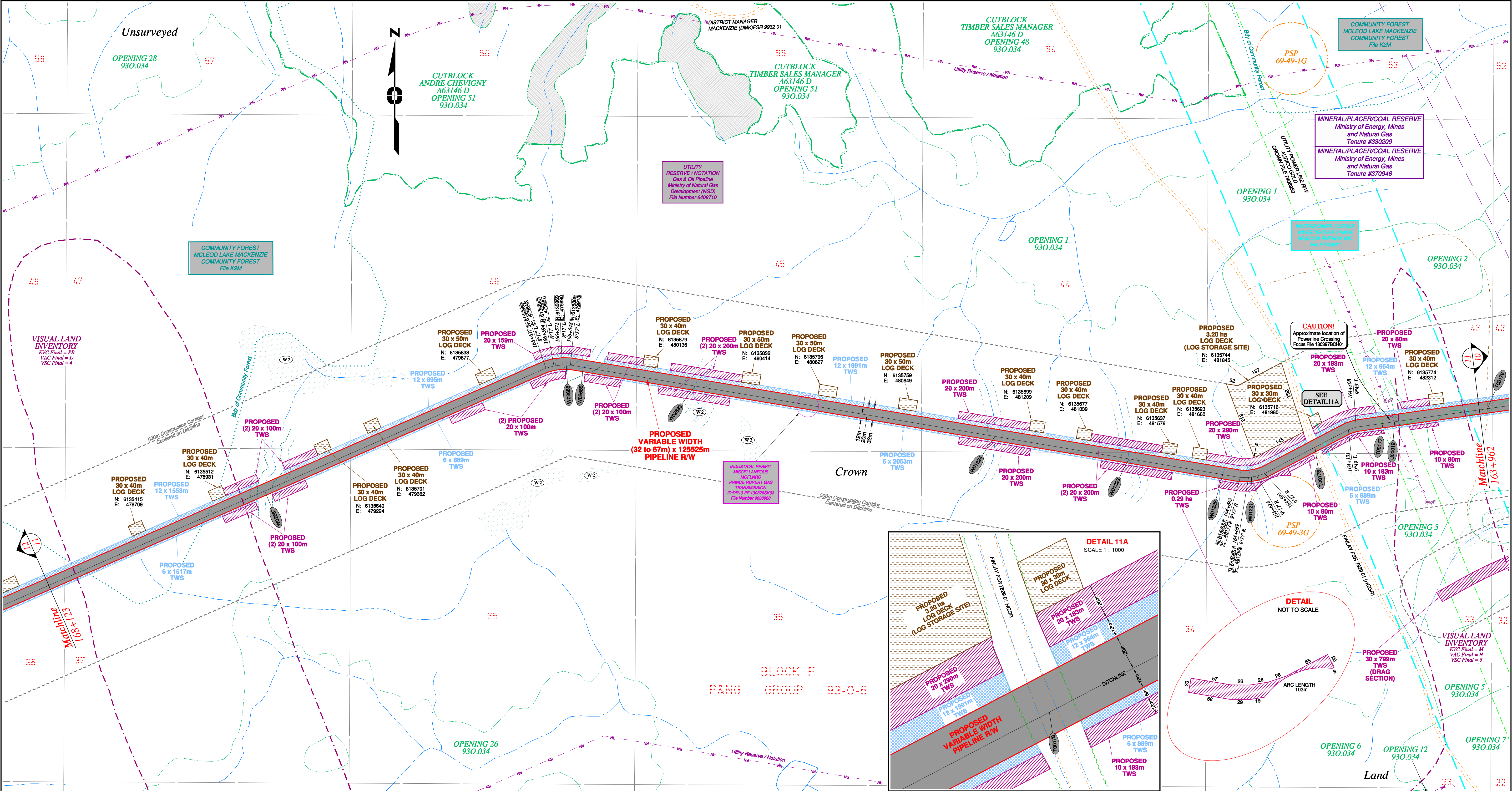
Sheet 10 of 32

**FOCUS**  
Focus Surveys (BC) Limited Partnership  
10716 - 100th Avenue Fort St. John BC  
V1J 1Z3 250.757.0300 www.focus.ca

**FOCUS:**  
AFE: 130275CP02R1  
TCPL: 004776-09-ML-03-040  
ePASS: 10048782

**REV.**  
1



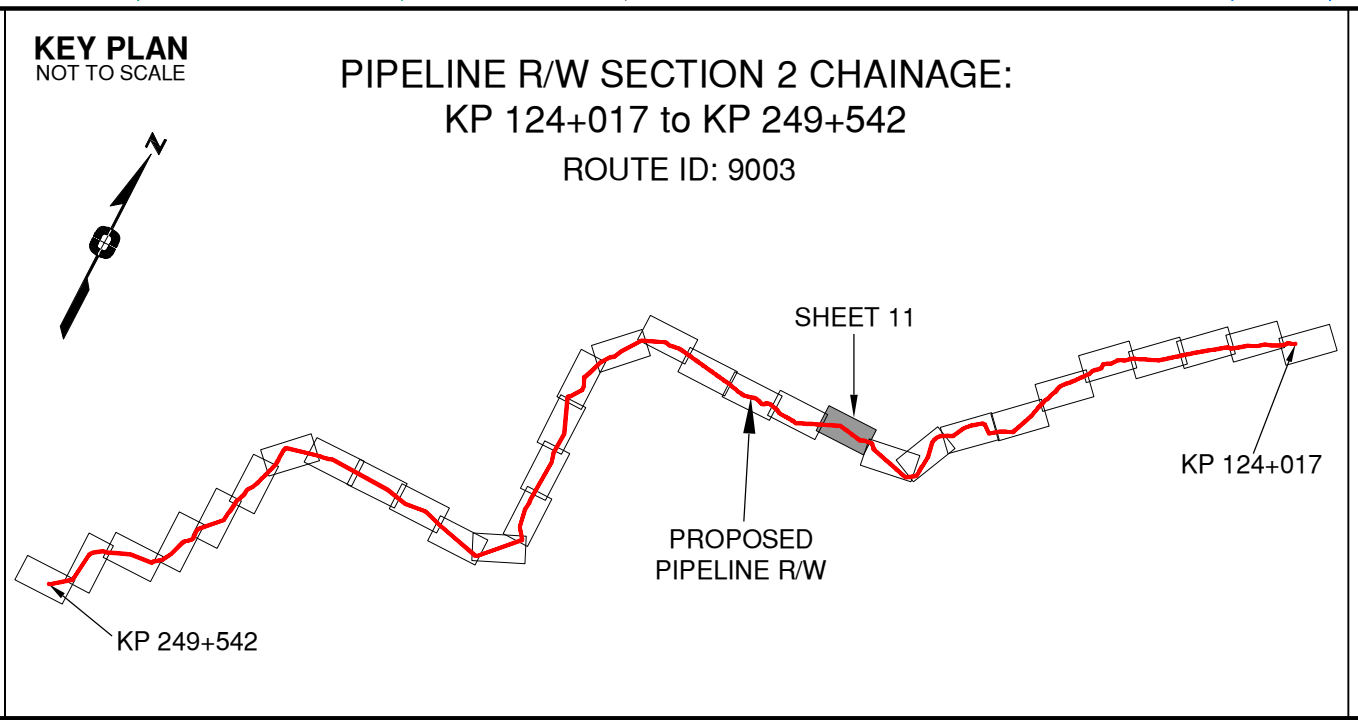


Rev	Revision Description	Date(Y/M/D)	By
0	Original Plan Prepared	2014/09/12	DC
1	Construction Plan Based on Rev.0 (2014/09/12) Except for New Construction Corridor: Shape, Label, Area Table & ePass	2014/12/31	DC

NOTES:

- Co-ordinates are NAD 83 Grid, UTM Zone 9 and Zone 10. Distances shown are in metres and decimals thereof. Chainages are two-dimensional and are on pipeline ditchline. Pipeline segment length derived from ditchline chainages.
- Fault Lines data has been provided from BGC Engineering Inc. Desktop Study dated December 20, 2013.
- Water crossing information has been provided by Stantec. Wetlands data has been provided by Stantec dated August 29, 2014. Freshwater Atlas wetlands outside of construction corridor have been removed from scenery.
- Cutblock data is confirmed using information from the Government of BC websites for Forest MapView and MapBC.
- This pipeline section is not within the Agricultural Land Reserve.
- Field Survey Completed July 15, 2014
- This plan represents the best information available at the time of survey. Focus Surveys and its employees take no responsibility for the location of any underground conduits, pipes, or other facilities whether shown on or omitted from this plan. All underground installations should be located by the respective authorities prior to construction.

LEGEND
Proposed Pipeline R/W shown thus:
Proposed Temp. Workspaces shown thus:
Proposed Log Decks & Storage Sites shown thus:
Right of Way shown thus:
Roads shown thus:
Highway shown thus:
Railway line shown thus:
Seismic line/trail shown thus:
Recreation Tenure shown thus:
Drainages shown thus:
Buried cable shown thus:
Buried pipe shown thus:
Overhead powerline shown thus:
Forest Cover Reserve shown thus:
Archaeological site shown thus:
Agricultural Land Reserve shown thus:
Coal Tenure shown thus:
Cutblock shown thus:
Fence body shown thus:
Fish/Wildlife Reserve body shown thus:
Grazing Tenure body shown thus:
Mineral Claim body shown thus:
Tree Farm Licence shown thus:
Quarry Reserve body shown thus:
Ungulate Winter Range body shown thus:
Visual Land Inventory shown thus:
Watershed Reserve body shown thus:
Wind Tenure body shown thus:
Woodlot body shown thus:
Fault Line shown thus:
Misc. Reserve/Notation body shown thus:
Misc. Licence/Permit body shown thus:
Stantec Wetland / Classification shown thus:
Crossings shown thus:
Old Growth Management Area shown thus:
Residences shown thus:
Power Pole shown thus:



APPROVED BY

PROJECT ENGINEER

No.	STATION	DESCRIPTION	OWNER
W02687	167+468	Trib to Williston Lake / S3 / RRZ = 20 RMZ = 20	N 6135520 E 479064
W02688	166+559	Trib to Williston Lake / S4 / RRZ = 0 RMZ = 30	N 6135669 E 479901
W02689	166+512	Trib to Williston Lake / S3 / RRZ = 20 RMZ = 30	N 6135683 E 479948
W02690	166+196	Trib to Williston Lake / S4 / RRZ = 0 RMZ = 30	N 6135611 E 480259
W01224	165+352	Trib to Williston Lake / S6 / RRZ = 0 RMZ = 20	N 6135671 E 481092
W01223	164+975	Trib to Williston Lake / S6 / RRZ = 0 RMZ = 20	N 6135609 E 481464
W01222	164+711	Trib to Williston Lake / No visible channel	N 6135665 E 481724
W01221	164+630	Trib to Williston Lake / S6 / RRZ = 0 RMZ = 20	N 6135558 E 481804
T00178	164+435	Forest Service Road (Finlay) / HGGR / FSR 7829 01	N 6135641 E 481980
T00177	164+232	Trail / Condition Unknown	N 6135707 E 482169
U00012	164+200	Overhead Powerline	N 6135712 E 482201
No.	STATION	DESCRIPTION	OWNER

Prince Rupert Gas Transmission Project

TransCanada

In business to deliver

**PRINCE RUPERT GAS TRANSMISSION LTD.**

PROPOSED VARIABLE WIDTH (32 to 67m) PIPELINE R/W FROM b-89-C, 93-O-10 TO a-18-A, 93-N-1 (SHEET CHAINAGE: 163+962 TO 168+123)

Unsurveyed Crown Land, Peace River District

The intended plot size of this plan is 864mm in width by 560mm in height when plotted at a scale of 1: 5000 (use D size sheet)

BCGS: 93N.010, 93O.001/011/012/022/032/033/034/035/045/055/056

Sheet 11 of 32

**FOCUS**

Focus Surveys (BC) Limited Partnership

10716 - 100th Avenue, Fort St. John, BC V1J 1Z3 250.787.0300 www.focus.ca

**FOCUS:** 130275CP02R1

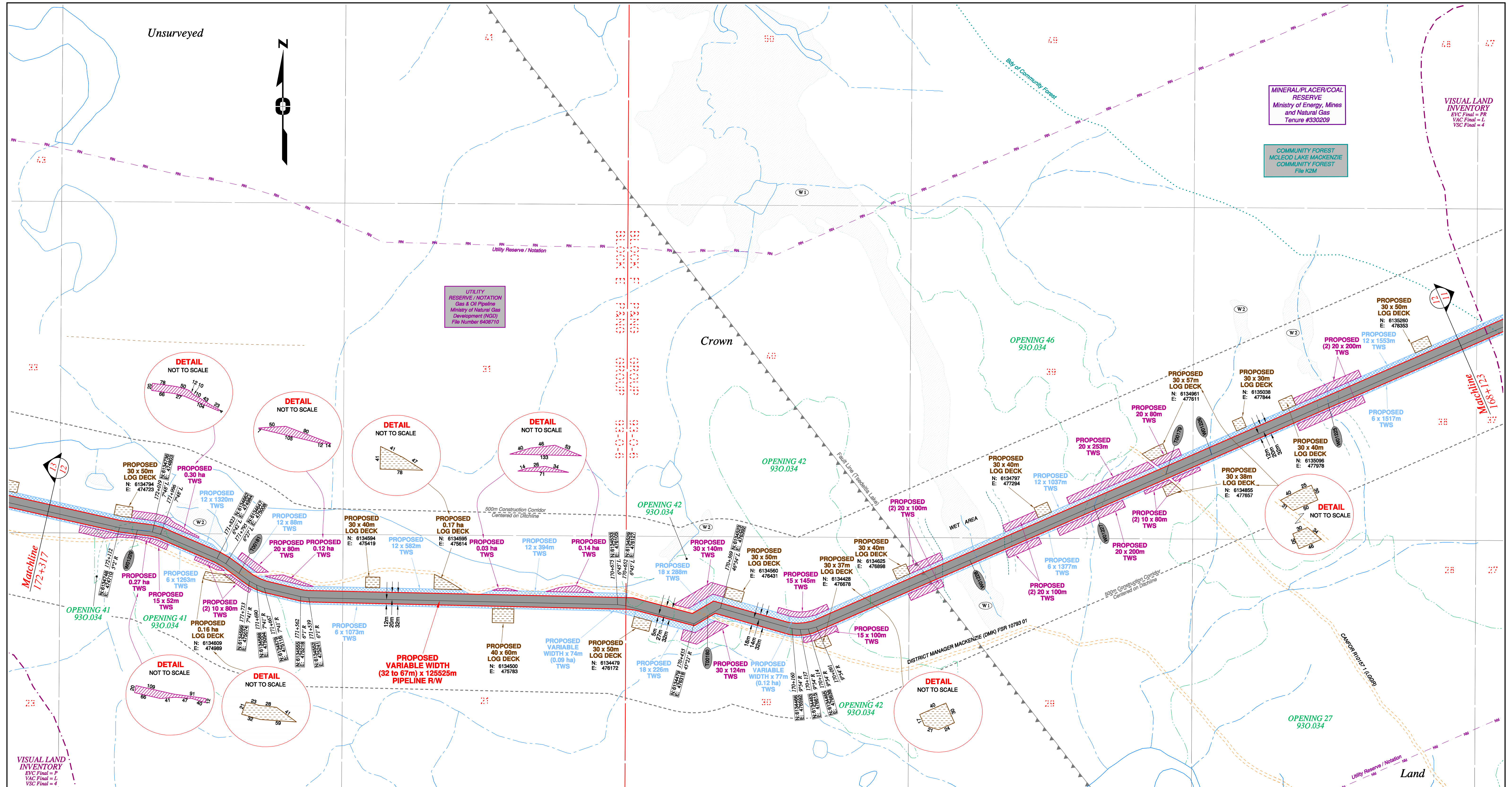
**ACPL:** 500948

**TCP:** 004776-09-ML-03-041

**ePASS:** 10048782

**REV. 1**



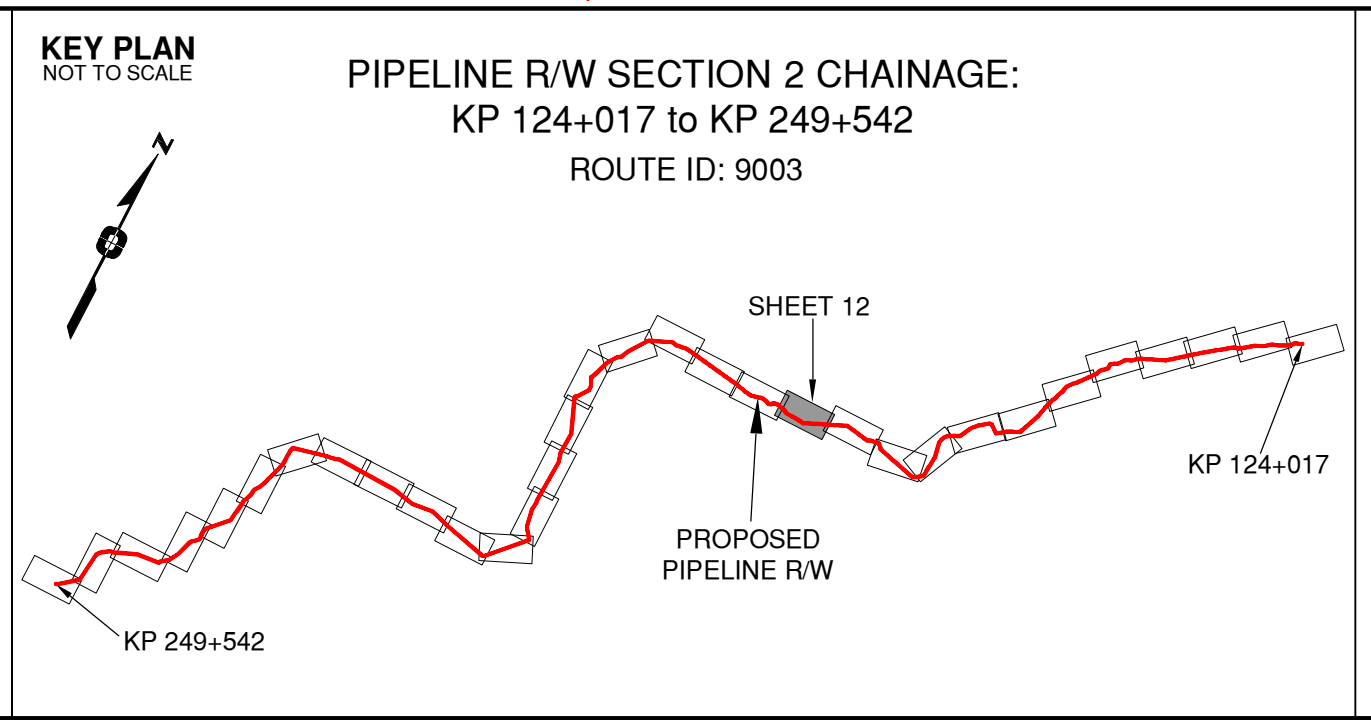


Rev	Revision Description	Date(Y/M/D)	By
0	Original Plan Prepared	2014/09/12	DC
1	Construction Plan Based on Rev.0 (2014/09/12) Except for New Construction Corridor: Shape, Label, Area Table & ePass	2014/12/31	DC

NOTES:

- Co-ordinates are NAD 83 Grid, UTM Zone 9 and Zone 10. Distances shown are in metres and decimals thereof. Chainages are two-dimensional and are on pipeline ditchline. Pipeline segment length derived from ditchline chainages.
- Fault Lines data has been provided from BGC Engineering Inc. Desktop Study dated December 20, 2013.
- Water crossing information has been provided by Stantec. Wetlands data has been provided by Stantec dated August 29, 2014. Freshwater Atlas wetlands outside of construction corridor have been removed from scenery.
- Cutblock data is confirmed using information from the Government of BC websites for Forest MapView and MapBC.
- This pipeline section is not within the Agricultural Land Reserve.
- Field Survey Completed July 15, 2014
- This plan represents the best information available at the time of survey. Focus Surveys and its employees take no responsibility for the location of any underground conduits, pipes, or other facilities whether shown on or omitted from this plan. All underground installations should be located by the respective authorities prior to construction.

LEGEND
Proposed Pipeline R/W shown thus:
Proposed Temp. Workspaces shown thus:
Proposed Log Decks & Storage Sites shown thus:
Right of Way shown thus:
Roads shown thus:
Highway shown thus:
Railway line shown thus:
Seismic line/trail shown thus:
Recreation Tenure shown thus:
Drainages shown thus:
Buried cable shown thus:
Buried pipe shown thus:
Overhead powerline shown thus:
Fault Line shown thus:
Misc. Reserve/Notation bdy shown thus:
Misc. Licence/Permit bdy shown thus:
Riparian Reserve Zone shown thus:
Riparian Management Zone shown thus:
Forest Cover Reserve shown thus:
Archaeological site shown thus:
Agricultural Land Reserve bdy shown thus:
Coal Tenure bdy shown thus:
Cutblock bdy shown thus:
Fence bdy shown thus:
Fish/Wildlife Reserve bdy shown thus:
Grazing Tenure bdy shown thus:
Mineral Claim bdy shown thus:
Tree Farm Licence shown thus:
Quarry Reserve bdy shown thus:
Ungulate Winter Range bdy shown thus:
Visual Land Inventory shown thus:
Watershed Reserve bdy shown thus:
Wind Tenure bdy shown thus:
Woodlot bdy shown thus:
Fault Line shown thus:
Misc. Reserve/Notation bdy shown thus:
Misc. Licence/Permit bdy shown thus:
Riparian Reserve Zone shown thus:
Riparian Management Zone shown thus:
Forest Cover Reserve shown thus:
Archaeological site shown thus:
Agricultural Land Reserve bdy shown thus:
Coal Tenure bdy shown thus:
Cutblock bdy shown thus:
Fence bdy shown thus:



APPROVED BY \_\_\_\_\_

PROJECT ENGINEER \_\_\_\_\_

STATION	DESCRIPTION	OWNER
W01229	172+961 Trib to Dastalga Creek / S6 / RRZ = 0 RMZ = 20	N 6134741 E 474761 ILMB
T00181	171+749 Forest Service Road / LGGR / FSR 10793 01	N 6134620 E 475045 Timber Sales Manager Prince George
T00180	170+409 Forest Service Road / LGGR / FSR 10793 01	N 6134502 E 476357 Timber Sales Manager Prince George
W01228	169+619 Trib to Dastalga Creek / S1 / RRZ = 20 RMZ = 50	N 6134658 E 477090 ILMB
W01227	169+242 Trib to Tsedditla Lake / S6 / RRZ = 0 RMZ = 20	N 6134810 E 477438 ILMB
T00179	169+024 Forestry Road / LGGR / R10157 1	N 6134897 E 477639 Canadian Forest Products Ltd.
W01226	168+884 Trib to Tsedditla Lake / No visible channel	N 6134953 E 477767 ILMB
W01225	168+528 Trib to Tsedditla Lake / S5 / RRZ = 0 RMZ = 30	N 6135095 E 478093 ILMB
No.	STATION DESCRIPTION	NAD 83 UTM ZONE 10 OWNER

TABLE OF CROSSINGS

Prince Rupert Gas Transmission Project

TransCanada  
In business to deliver

**PRINCE RUPERT GAS TRANSMISSION LTD.**

PROPOSED VARIABLE WIDTH (32 to 67m) PIPELINE R/W  
FROM b-89-C, 93-O-10 TO a-18-A, 93-N-1  
(SHEET CHAINAGE: 168+123 TO 172+317)

Unsurveyed Crown Land, Peace River District

The intended plot size of this plan is 864mm in width by 560mm in height when plotted at a scale of 1: 5000 (use D size sheet)

BCGS: 93N.010, 93O.001/011/012/022/032/033/034/035/045/055/056

FOCUS  
Focus Surveys (BC) Limited Partnership  
10716 - 100th Avenue Fort St. John BC  
V1J 2J3 250.757.0300 www.focus.ca

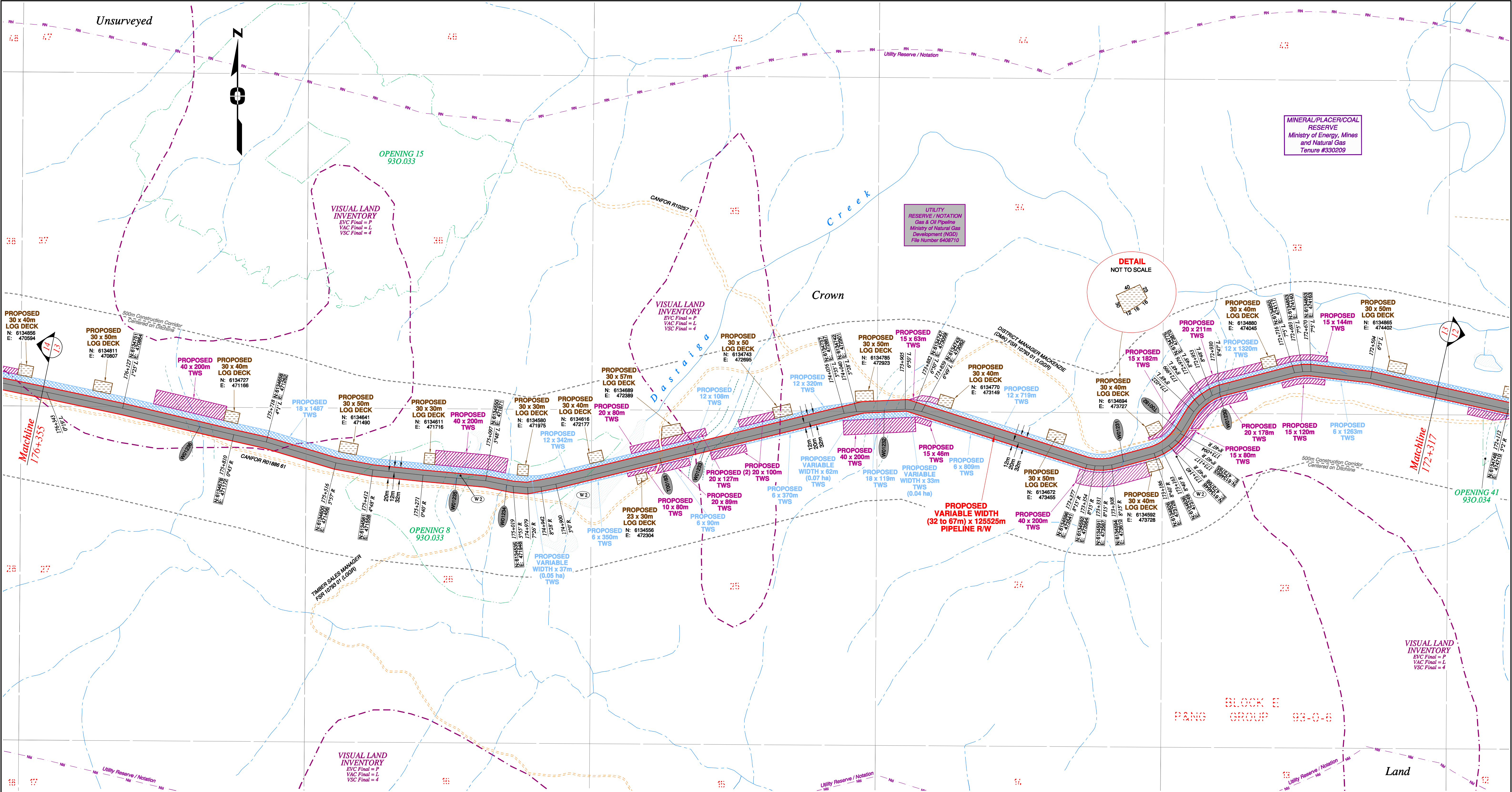
FOCUS:  
AFCE:  
TCPL:  
ePASS:

130275CP02R1  
500948  
004776-09-ML-03-042  
10048782

Sheet 12 of 32

REV. 1



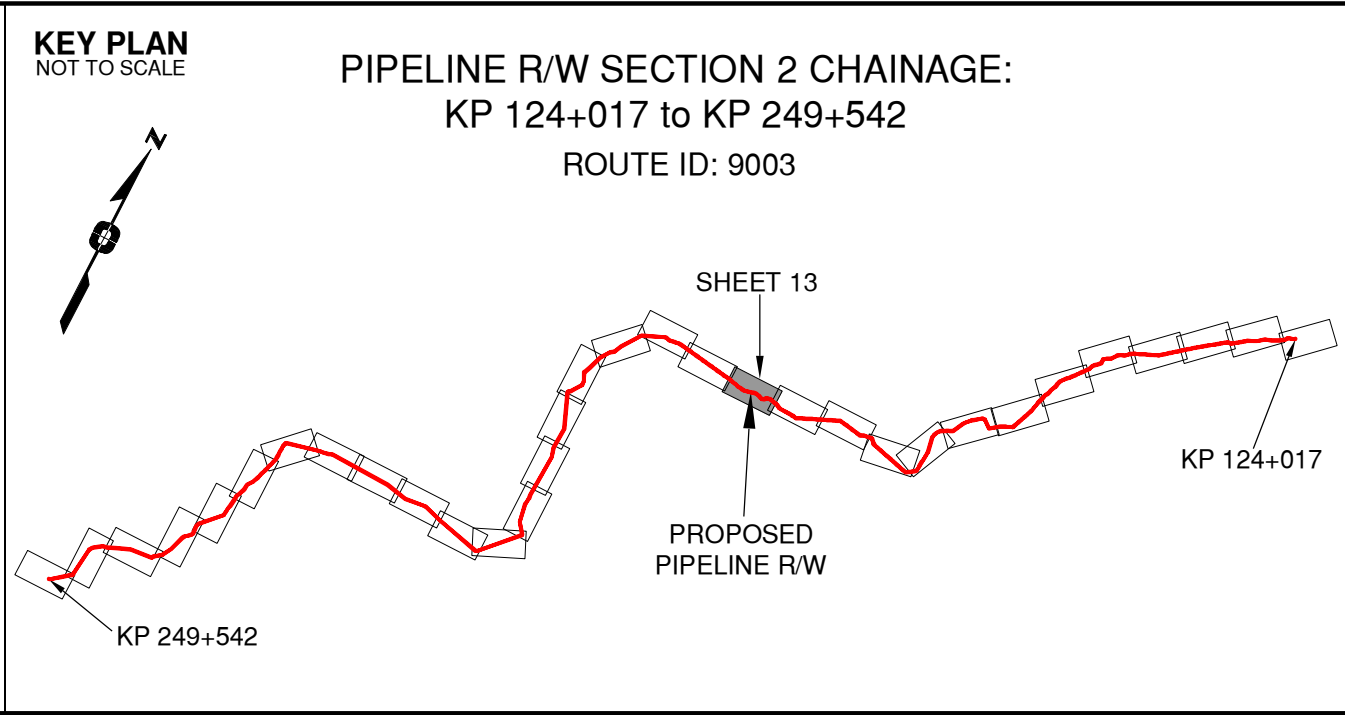


Rev	Revision Description	Date(Y/M/D)	By
0	Original Plan Prepared	2014/09/12	DC
1	Construction Plan Based on Rev.0 (2014/09/12) Except for New Construction Corridor: Shape, Label, Area Table & ePass	2014/12/31	DC

NOTES:

- Co-ordinates are NAD 83 Grid, UTM Zone 9 and Zone 10. Distances shown are in metres and decimals thereof. Chainages are two-dimensional and are on pipeline ditchline. Pipeline segment length derived from ditchline chainages.
- Fault Lines data has been provided from BGC Engineering Inc. Desktop Study dated December 20, 2013.
- Water crossing information has been provided by Stantec. Wetlands data has been provided by Stantec dated August 29, 2014. Freshwater Atlas wetlands outside of construction corridor have been removed from scenery.
- Cutblock data is confirmed using information from the Government of BC websites for Forest MapView and MapBC.
- This pipeline section is not within the Agricultural Land Reserve.
- Field Survey Completed July 15, 2014
- This plan represents the best information available at the time of survey. Focus Surveys and its employees take no responsibility for the location of any underground conduits, pipes, or other facilities whether shown on or omitted from this plan. All underground installations should be located by the respective authorities prior to construction.

LEGEND
Proposed Pipeline R/W shown thus:
Proposed Temp. Workspaces shown thus:
Proposed Log Decks & Storage Sites shown thus:
Right of Way shown thus:
Roads shown thus:
Highway shown thus:
Railway line shown thus:
Seismic line/trail shown thus:
Recreation Tenure shown thus:
Drainages shown thus:
Buried cable shown thus:
Buried pipe shown thus:
Overhead powerline shown thus:
Riparian Reserve Zone shown thus:
Riparian Management Zone shown thus:
Forest Cover Reserve shown thus:
Archaeological site shown thus:
Agricultural Land Reserve bdy shown thus:
Coal Tenure bdy shown thus:
Cutblock bdy shown thus:
Fence bdy shown thus:
Fish/Wildlife Reserve bdy shown thus:
Grazing Tenure bdy shown thus:
Mineral Claim bdy shown thus:
Tree Farm Licence shown thus:
Quarry Reserve bdy shown thus:
Ungulate Winter Range bdy shown thus:
Visual Land Inventory shown thus:
Watershed Reserve bdy shown thus:
Wind Tenure bdy shown thus:
Woodlot bdy shown thus:
Fault Line shown thus:
Misc. Reserve/Notation bdy shown thus:
Misc. Licence/Permit bdy shown thus:
Stantec Wetland / Classification shown thus:
Crossings shown thus:
Old Growth Management Area shown thus:
Residences shown thus:
Power Pole shown thus:



APPROVED BY
PROJECT ENGINEER

STATION	DESCRIPTION	OWNER
W01236	175+905 Trib to Dastaiga Creek / S5 / RRZ = 0 RMZ = 30	N 6134701 E 471078 ILMB
W01235	175+177 Trib to Dastaiga Creek / S5 / RRZ = 0 RMZ = 30	N 6134558 E 471721 ILMB
W01234	175+036 Trib to Dastaiga Creek / No visible channel	N 6134539 E 471930 ILMB
T00183	174+601 Forest Service Road / HGGR / FSR 10793 01	N 6134612 E 472356 Timber Sales Mgr. Prince George
W01233	174+472 Trib to Dastaiga Creek / S3 / RRZ = 20 RMZ = 20	N 6134643 E 472481 ILMB
W01232	173+963 Trib to Dastaiga Creek / S4 / RRZ = 0 RMZ = 30	N 6134746 E 472978 ILMB
W01231	173+274 Trib to Dastaiga Creek / Non-classified drainage / RRZ = 0 RMZ = 0	N 6134603 E 473642 ILMB
T00182	173+087 Forest Service Road / HGGR / FSR 10793 01	N 6134686 E 473803 Timber Sales Mgr. Prince George
W01230	172+931 Trib to Dastaiga Creek / S6 / RRZ = 0 RMZ = 20	N 6134796 E 473909 ILMB
No.	STATION DESCRIPTION	NAD 83 UTM ZONE 10 OWNER

TABLE OF CROSSINGS

Prince Rupert Gas Transmission Project

**PRINCE RUPERT GAS TRANSMISSION LTD.**

PROPOSED VARIABLE WIDTH (32 to 67m) PIPELINE R/W FROM b-89-C, 93-O-10 TO a-18-A, 93-N-1 (SHEET CHAINAGE: 172+317 TO 176+355)

Unsurveyed Crown Land, Peace River District

The intended plot size of this plan is 864mm in width by 560mm in height when plotted at a scale of 1: 5000 (use D size sheet)

BCGS: 93N.010, 93O.001/011/012/022/032/033/034/035/045/055/056

Sheet 13 of 32

**FOCUS**

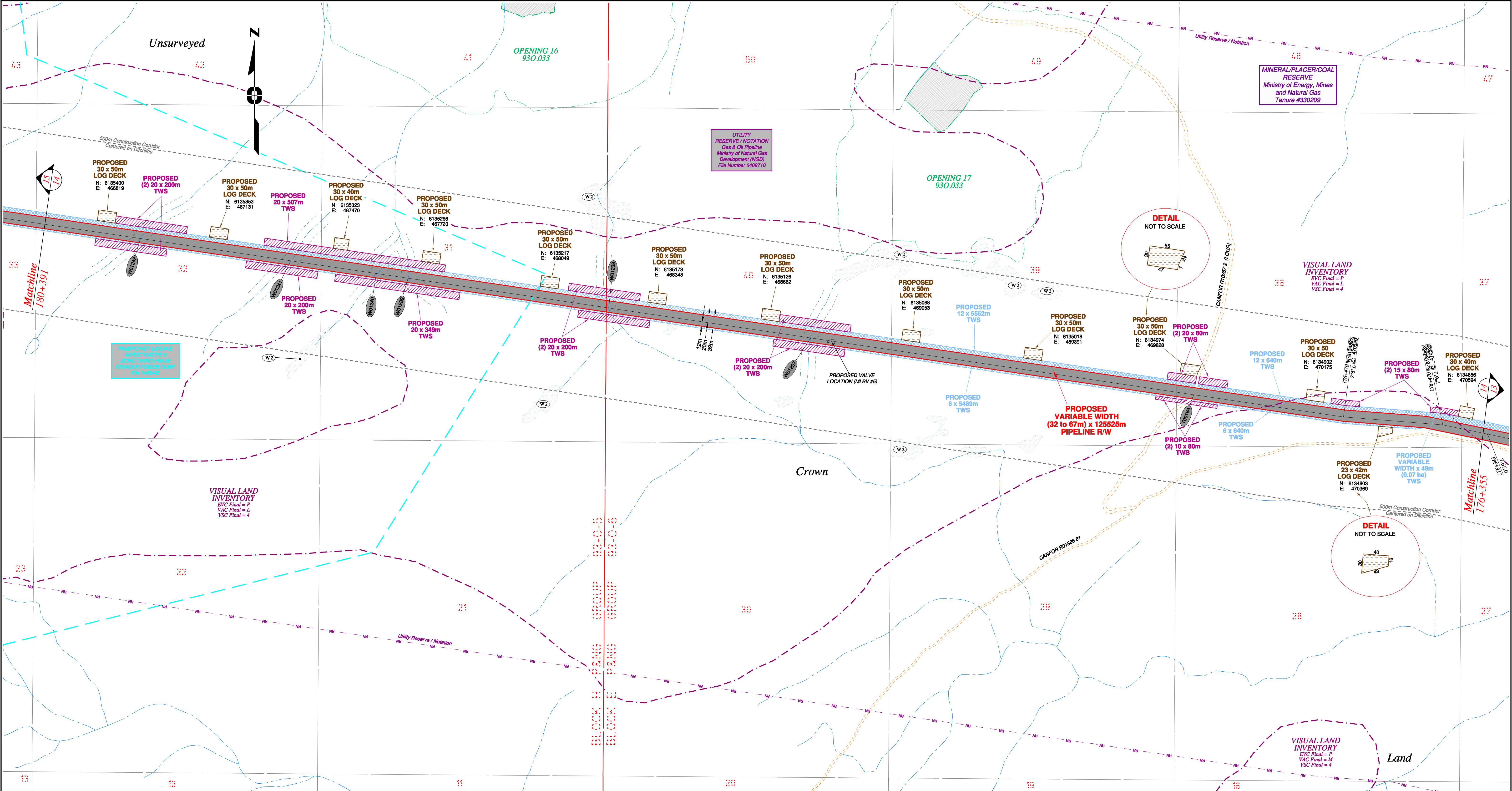
Focus Surveys (BC) Limited Partnership  
10716 - 100th Avenue Fort St. John BC  
V1J 1Z3 250.757.0300 www.focus.ca

**FOCUS:** 130275CP02R1  
**AFC:** 500948  
**TCPL:** 004776-09-ML-03-043  
**ePASS:** 10048782

**REV.**

1



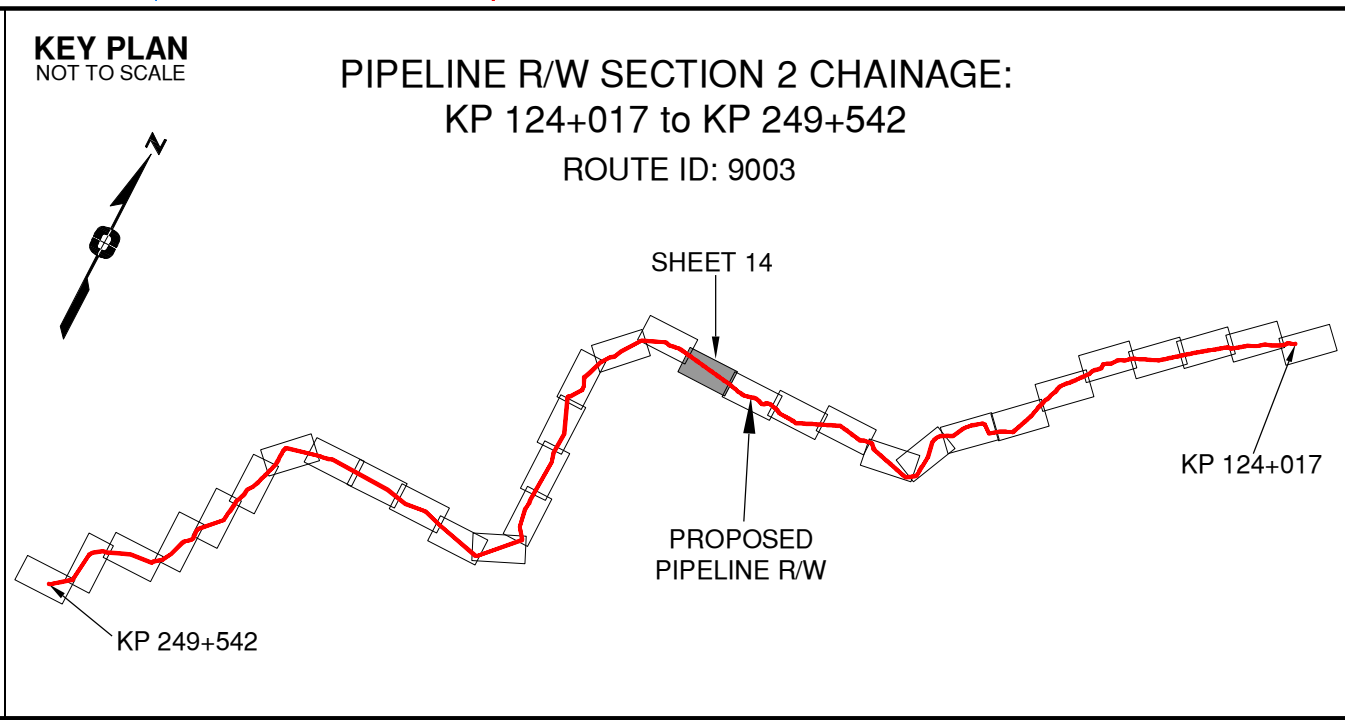


Rev	Revision Description	Date(Y/M/D)	By
0	Original Plan Prepared	2014/09/12	DC
1	Construction Plan Based on Rev.0 (2014/09/12) Except for New Construction Corridor: Shape, Label, Area Table & ePass	2014/12/31	DC

NOTES:

- Co-ordinates are NAD 83 Grid, UTM Zone 9 and Zone 10. Distances shown are in metres and decimals thereof. Chainages are two-dimensional and are on pipeline ditchline. Pipeline segment length derived from ditchline chainages.
- Fault Lines data has been provided from BGC Engineering Inc. Desktop Study dated December 20, 2013.
- Water crossing information has been provided by Stantec. Wetlands data has been provided by Stantec dated August 29, 2014. Freshwater Atlas wetlands outside of construction corridor have been removed from scenery.
- Cutblock data is confirmed using information from the Government of BC websites for Forest MapView and MapBC.
- This pipeline section is not within the Agricultural Land Reserve.
- Field Survey Completed July 15, 2014
- This plan represents the best information available at the time of survey. Focus Surveys and its employees take no responsibility for the location of any underground conduits, pipes, or other facilities whether shown on or omitted from this plan. All underground installations should be located by the respective authorities prior to construction.

LEGEND
Proposed Pipeline R/W shown thus:
Proposed Temp. Workspaces shown thus:
Proposed Log Decks & Storage Sites shown thus:
Right of Way shown thus:
Roads shown thus:
Highway shown thus:
Railway line shown thus:
Seismic line/trail shown thus:
Wind Tenure bdy shown thus:
Recreation Tenure shown thus:
Drainages shown thus:
Buried cable shown thus:
Buried pipe shown thus:
Overhead powerline shown thus:
Riparian Reserve Zone shown thus:
Riparian Management Zone shown thus:
Forest Cover Reserve shown thus:
Archaeological site shown thus:
Agricultural Land Reserve bdy shown thus:
Coal Tenure bdy shown thus:
Cutblock bdy shown thus:
Fence bdy shown thus:
Fish/Wildlife Reserve bdy shown thus:
Grazing Tenure bdy shown thus:
Mineral Claim bdy shown thus:
Tree Farm Licence shown thus:
Quarry Reserve bdy shown thus:
Ungulate Winter Range bdy shown thus:
Visual Land Inventory shown thus:
Watershed Reserve bdy shown thus:
Woodlot bdy shown thus:
Fault Line shown thus:
Misc. Reserve/Notation bdy shown thus:
Misc. Licence/Permit bdy shown thus:
Riparian Reserve / Classification shown thus:
Crossings shown thus:
Old Growth Management Area shown thus:
Residences shown thus:
Power Pole shown thus:



APPROVED BY \_\_\_\_\_

PROJECT ENGINEER \_\_\_\_\_

No.	STATION	DESCRIPTION	NAD 83 UTM ZONE 10	OWNER
W01242	180+122	Trib to Dastaiga Creek / S6 / RRZ = 0 RMZ = 20	N 6135339 E 466913	ILMB
W01241	179+701	Trib to Dastaiga Creek / S6 / RRZ = 0 RMZ = 20	N 6135277 E 467330	ILMB
W01240	179+460	Trib to Dastaiga Creek / S6 / RRZ = 0 RMZ = 20	N 6135242 E 467568	ILMB
W01238	179+371	Trib to Dastaiga Creek / S6 / RRZ = 0 RMZ = 20	N 6135229 E 467656	ILMB
W01238	178+808	Trib to Dastaiga Creek / S6 / RRZ = 0 RMZ = 20	N 6135146 E 468213	ILMB
W01237	178+241	Trib to Dastaiga Creek / S6 / RRZ = 0 RMZ = 20	N 6135063 E 468774	ILMB
T00184	177+166	Forestry Road / LGGR / R10257 2	N 6134905 E 469837	Canadian Forest Products Ltd.
No.	STATION	DESCRIPTION	NAD 83 UTM ZONE 10	OWNER

TABLE OF CROSSINGS

Prince Rupert Gas Transmission Project

**PRINCE RUPERT GAS TRANSMISSION LTD.**

PROPOSED VARIABLE WIDTH (32 to 67m) PIPELINE R/W FROM b-89-C, 93-O-10 TO a-18-A, 93-N-1 (SHEET CHAINAGE: 176+355 TO 180+391)

Unsurveyed Crown Land, Peace River District

BCGS: 93N.010, 93O.001/011/012/022/032/033/034/035/045/055/056

The intended plot size of this plan is 864mm in width by 560mm in height when plotted at a scale of 1: 5000 (use D size sheet)

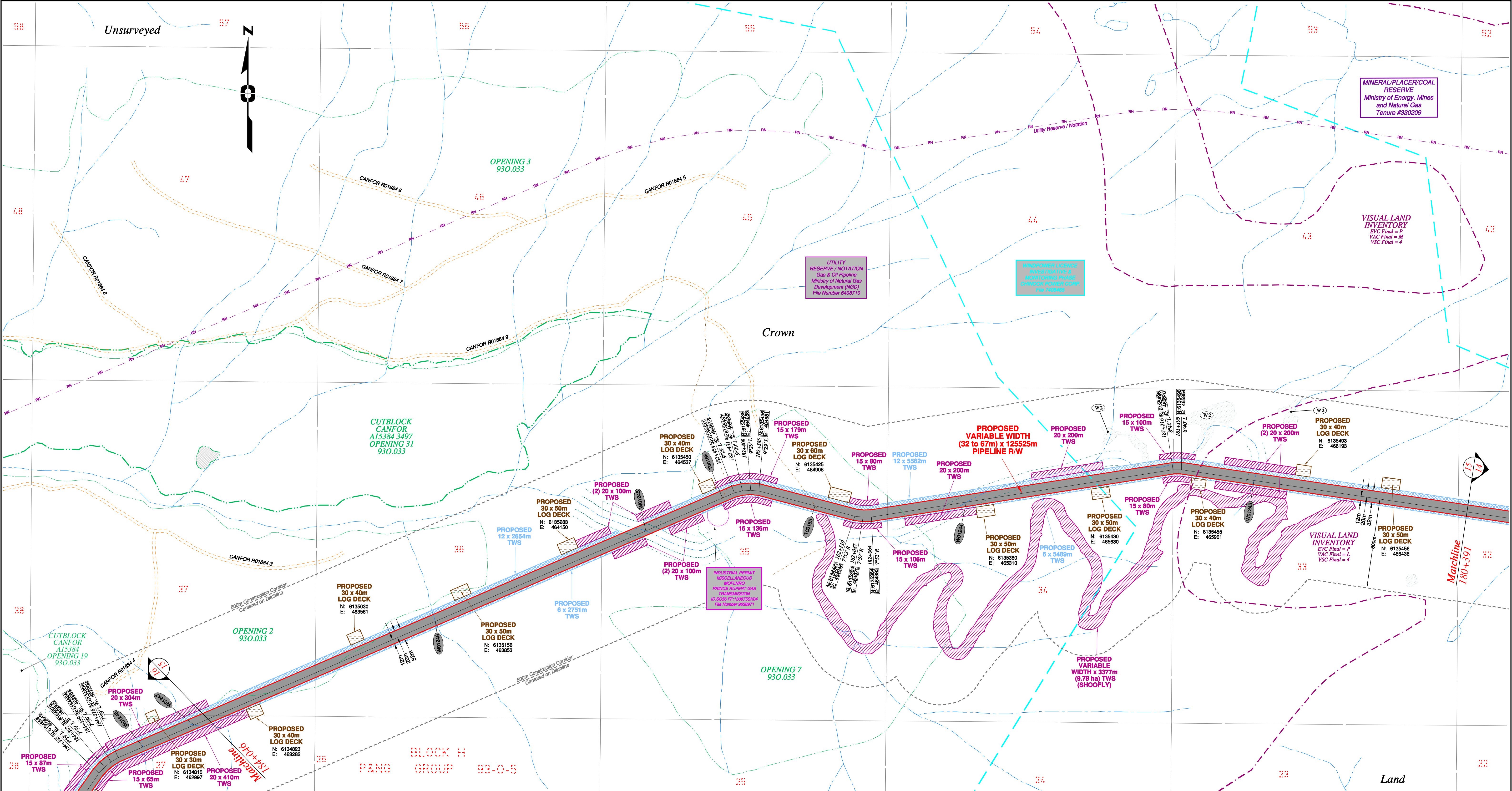
FOCUS  
Focus Surveys (BC) Limited Partnership  
10716 - 100th Avenue Fort St John BC  
V1J 1Z3 250.757.0300 www.focus.ca

FOCUS: 130275CP02R1  
AFE: 500948  
TCPL: 004776-09-ML-03-044  
ePASS: 10048782

Sheet 14 of 32

REV. 1



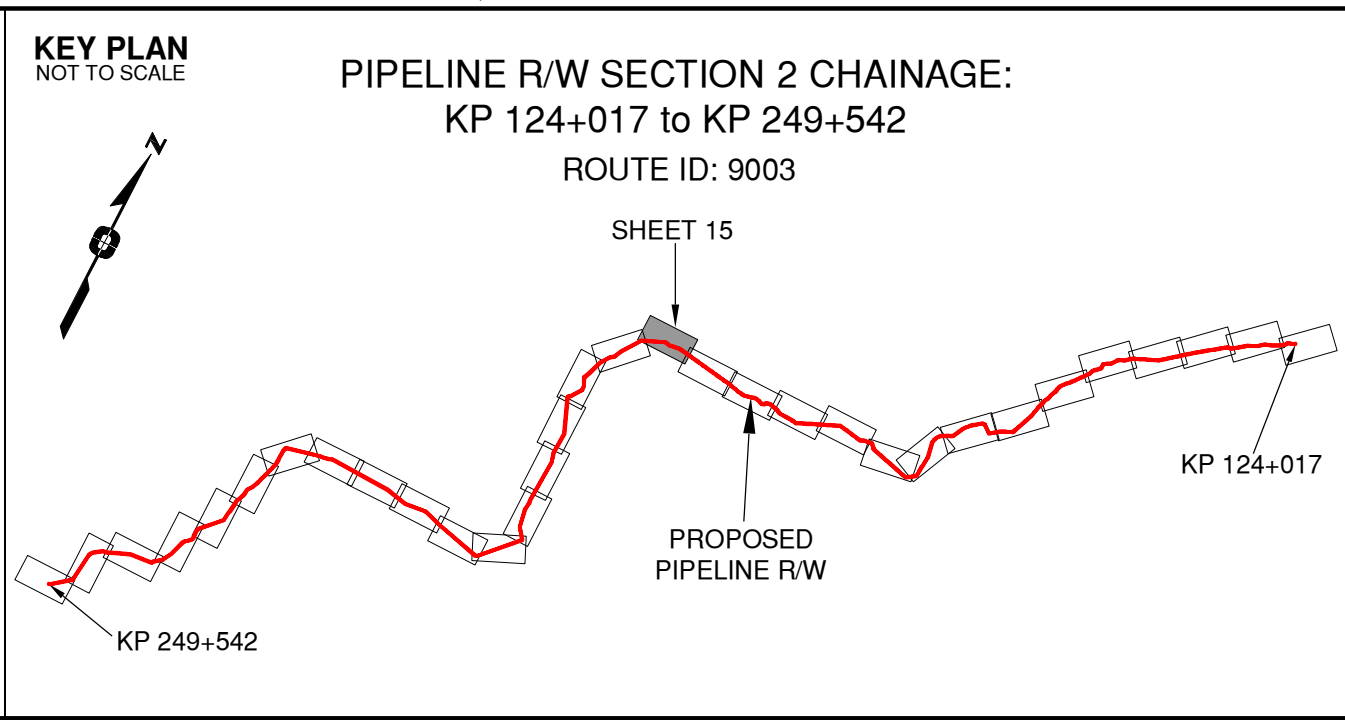


Rev	Revision Description	Date(Y/M/D)	By
0	Original Plan Prepared	2014/09/12	DC
1	Construction Plan Based on Rev.0 (2014/09/12) Except for New Construction Corridor: Shape, Label, Area Table & ePASS	2014/12/31	DC

NOTES:

- Co-ordinates are NAD 83 Grid, UTM Zone 9 and Zone 10. Distances shown are in metres and decimals thereof. Chainages are two-dimensional and are on pipeline ditchline. Pipeline segment length derived from ditchline chainages.
- Fault Lines data has been provided from BGC Engineering Inc. Desktop Study dated December 20, 2013.
- Water crossing information has been provided by Stantec. Wetlands data has been provided by Stantec dated August 29, 2014. Freshwater Atlas wetlands outside of construction corridor have been removed from scenery.
- Cutblock data is confirmed using information from the Government of BC websites for Forest MapView and MapBC.
- This pipeline section is not within the Agricultural Land Reserve.
- Field Survey Completed July 15, 2014
- This plan represents the best information available at the time of survey. Focus Surveys and its employees take no responsibility for the location of any underground conduits, pipes, or other facilities whether shown on or omitted from this plan. All underground installations should be located by the respective authorities prior to construction.

LEGEND
Proposed Pipeline R/W shown thus:
Proposed Temp. Workspaces shown thus:
Proposed Log Decks & Storage Sites shown thus:
Right of Way shown thus:
Roads shown thus:
Highway shown thus:
Railway line shown thus:
Seismic line/trail shown thus:
Recreation Tenure shown thus:
Drainages shown thus:
Buried cable shown thus:
Buried pipe shown thus:
Overhead powerline shown thus:
Fault Line shown thus:
Misc. Reserve/Notation bdy shown thus:
Riparian Reserve Zone shown thus:
Riparian Management Zone shown thus:
Forest Cover Reserve shown thus:
Archaeological site shown thus:
Agricultural Land Reserve bdy shown thus:
Coal Tenure bdy shown thus:
Cutblock bdy shown thus:
Fence bdy shown thus:
Fish/Wildlife Reserve bdy shown thus:
Grazing Tenure bdy shown thus:
Mineral Claim bdy shown thus:
Tree Farm Licence shown thus:
Quarry Reserve bdy shown thus:
Ungulate Winter Range bdy shown thus:
Visual Land Inventory shown thus:
Watershed Reserve bdy shown thus:
Wind Tenure bdy shown thus:
Woodlot bdy shown thus:
Stantec Wetland / Classification shown thus:
Crossings shown thus:
Old Growth Management Area shown thus:
Residences shown thus:
Power Pole shown thus:



APPROVED BY

PROJECT ENGINEER

STATION	DESCRIPTION	OWNER
W01246	183+358 Trib to Nation River / No visible channel	N 6135075 E 463793 ILMB
W01245	182+722 Trib to Nation River / S3 / RRZ = 20 RMZ = 20	N 6135326 E 464367 ILMB
T00186	182+490 Trail / Condition Unknown	N 6135417 E 464580 Crown
T00185	182+224 Trail / Condition Unknown	N 6135396 E 464837 Crown
W01244	181+797 Trib to Nation River / S6 / RRZ = 0 RMZ = 20	N 6135406 E 465257 ILMB
W01243	180+988 Trib to Nation River / S6 / RRZ = 0 RMZ = 20	N 6135466 E 466056 ILMB
No.	180+000	NAD 83 UTM ZONE 10 OWNER

TABLE OF CROSSINGS

Prince Rupert Gas Transmission Project

TransCanada  
In business to deliver

**PRINCE RUPERT GAS TRANSMISSION LTD.**

PROPOSED VARIABLE WIDTH (32 to 67m) PIPELINE R/W FROM b-89-C, 93-O-10 TO a-18-A, 93-N-1 (SHEET CHAINAGE: 180+391 TO 184+046)

Unsurveyed Crown Land, Peace River District

BCGS: 93N.010, 93O.001/011/012/022/032/033/034/035/045/055/056

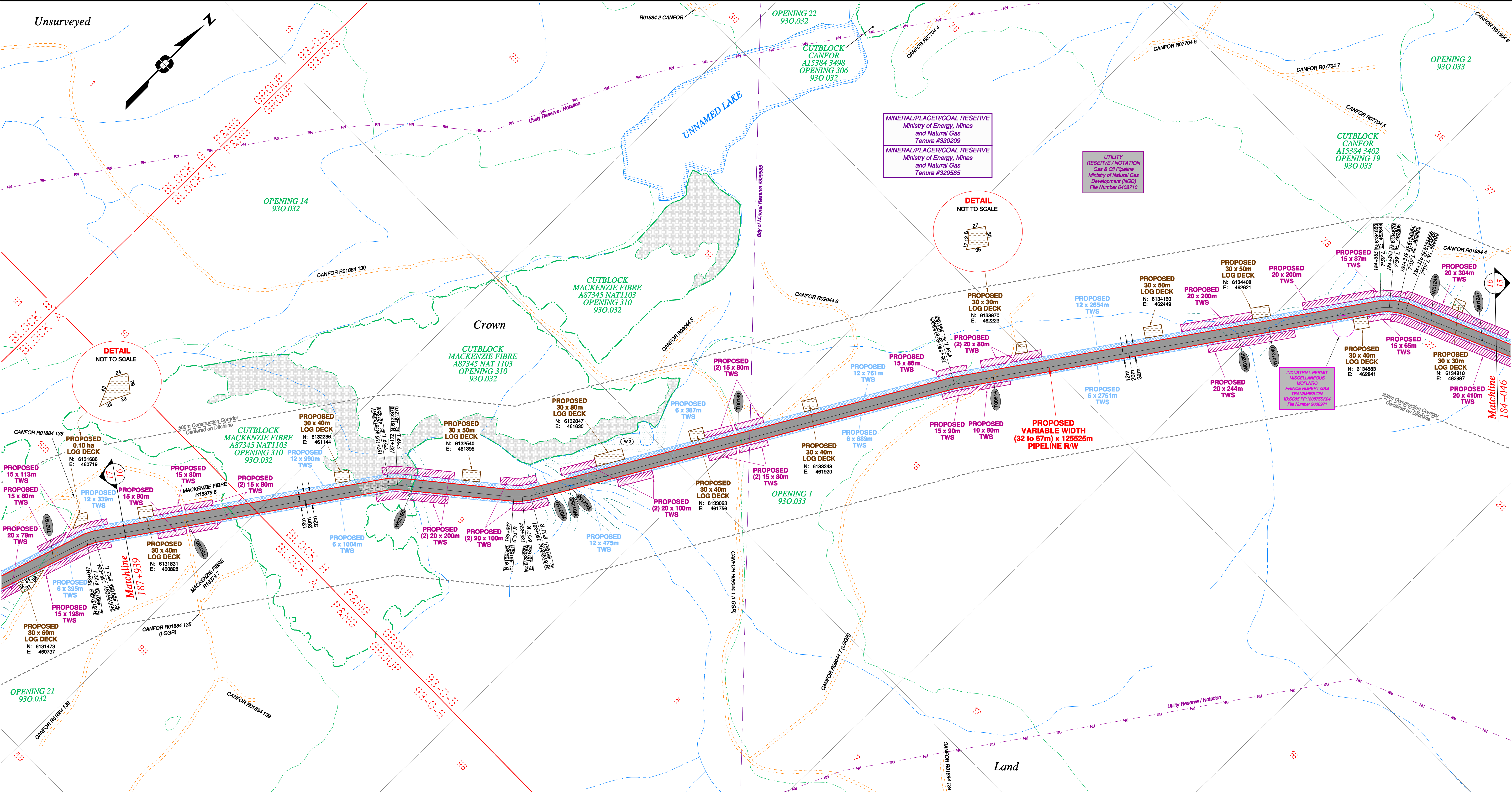
Sheet 15 of 32

FOCUS  
Focus Surveys (BC) Limited Partnership  
10710 - 100th Avenue Fort St. John BC V1J 1Z3 250.787.0300 www.focus.ca

FOCUS: 130275CP02R1  
AFE: 500948  
TCPL: 004776-09-ML-03-045  
ePASS: 10048782

REV. 1



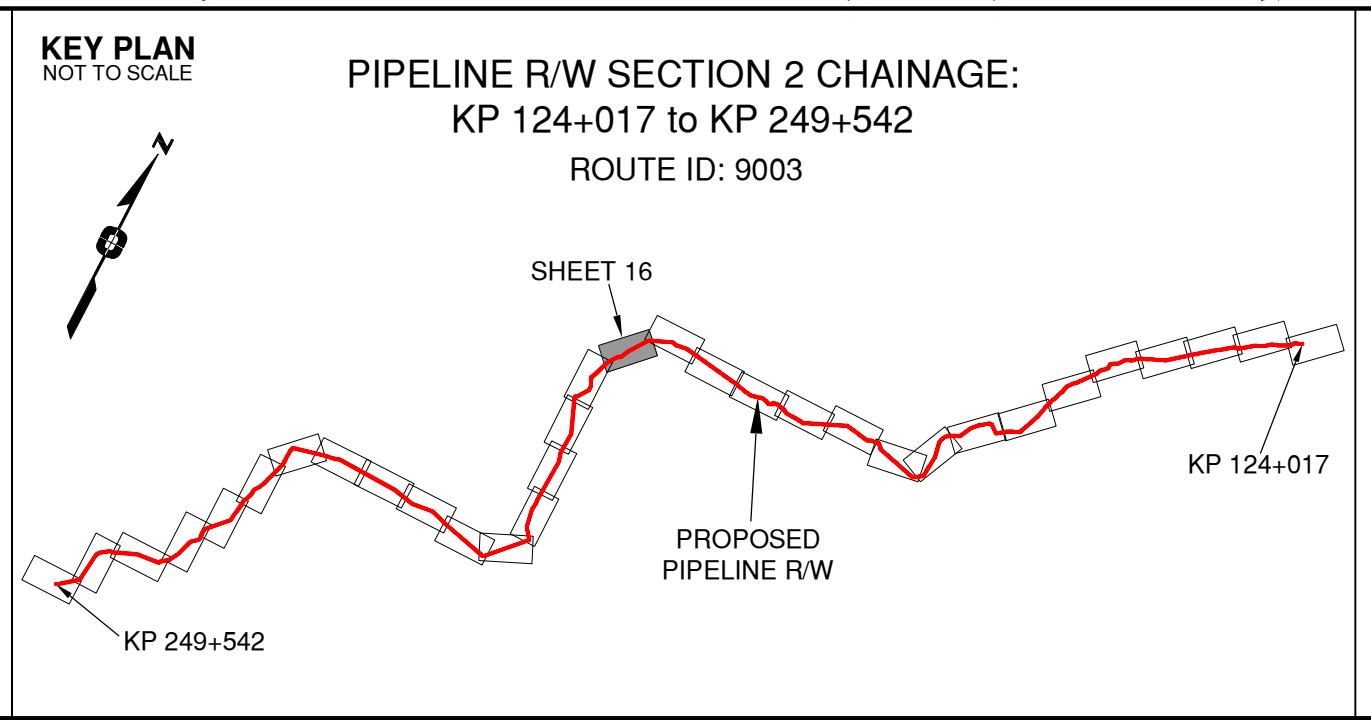


Rev	Revision Description	Date(Y/M/D)	By
0	Original Plan Prepared	2014/09/12	DC
1	Construction Plan Based on Rev.0 (2014/09/12) Except for New Construction Corridor: Shape, Label, Area Table & ePass	2014/12/31	DC

NOTES:

- Co-ordinates are NAD 83 Grid, UTM Zone 9 and Zone 10. Distances shown are in metres and decimals thereof. Chainages are two-dimensional and are on pipeline ditchline. Pipeline segment length derived from ditchline chainages.
- Fault Lines data has been provided from BGC Engineering Inc. Desktop Study dated December 20, 2013.
- Water crossing information has been provided by Stattec. Wetlands data has been provided by Stattec dated August 29, 2014. Freshwater Atlas wetlands outside of construction corridor have been removed from scenery.
- Cutblock data is confirmed using information from the Government of BC websites for Forest MapView and MapBC.
- This pipeline section is not within the Agricultural Land Reserve.
- Field Survey Completed July 15, 2014
- This plan represents the best information available at the time of survey. Focus Surveys and its employees take no responsibility for the location of any underground conduits, pipes, or other facilities whether shown on or omitted from this plan. All underground installations should be located by the respective authorities prior to construction.

LEGEND
Proposed Pipeline R/W shown thus:
Proposed Temp. Workspaces shown thus:
Proposed Log Decks & Storage Sites shown thus:
Right of Way shown thus:
Roads shown thus:
Highway shown thus:
Railway line shown thus:
Seismic line/trail shown thus:
Recreation Tenure shown thus:
Drainages shown thus:
Buried cable shown thus:
Buried pipe shown thus:
Overhead powerline shown thus:
Stattec Wetland / Classification shown thus:
Riparian Management Zone shown thus:
Forest Cover Reserve shown thus:
Archaeological site shown thus:
Agricultural Land Reserve bdy shown thus:
Coal Tenure bdy shown thus:
Cutblock bdy shown thus:
Fence bdy shown thus:
Fish/Wildlife Reserve bdy shown thus:
Grazing Tenure bdy shown thus:
Mineral Claim bdy shown thus:
Tree Farm Licence shown thus:
Quarry Reserve bdy shown thus:
Ungulate Winter Range bdy shown thus:
Visual Land Inventory shown thus:
Watershed Reserve bdy shown thus:
Wind Tenure bdy shown thus:
Woodlot bdy shown thus:
Fault Line shown thus:
Misc. Reserve/Notation bdy shown thus:
Misc. Licence/Permit bdy shown thus:
Stattec Reserve Zone shown thus:
Crossings shown thus:
Old Growth Management Area shown thus:
Residences shown thus:
Power Pole shown thus:



APPROVED BY

PROJECT ENGINEER

STATION	DESCRIPTION	OWNER
T00190	187+766 Forestry Road / LGGR / R01884.135	N 6131892 E 460927 Canadian Forest Products Ltd.
W02160	187+127 Trib to Philip Creek / S6 / RRZ = 0 RMZ = 20	N 6132406 E 461304 ILMB
W02158	186+741 Trib to Nation River / S3 / RRZ = 20 RMZ = 20	N 6132570 E 461581 ILMB
W01253	186+692 Trib to Philip Creek / S3 / RRZ = 20 RMZ = 20	N 6132712 E 461606 ILMB
W02158	186+680 Trib to Nation River / S3 / RRZ = 20 RMZ = 20	N 6132714 E 461607 ILMB
T00180	186+207 Forestry Road / LGGR / R09044.1	N 6131311 E 461650 Canadian Forest Products Ltd.
T00914	185+476 Forestry Road / LGGR / R09044.7	N 6133757 E 462226 Canadian Forest Products Ltd.
W01250	184+789 Trib to Philip Creek / S6 / RRZ = 0 RMZ = 20	N 6134322 E 462619 ILMB
W01249	184+700 Trib to Nation River / S4 / RRZ = 0 RMZ = 30	N 6134394 E 462669 ILMB
W01248	184+241 Trib to Nation River / S6 / RRZ = 0 RMZ = 20	N 6134726 E 462971 ILMB
W01247	184+086 Trib to Nation River / Non-classified drainage / RRZ = 0 RMZ = 0	N 6134787 E 463113 ILMB
No.	STATION DESCRIPTION	NAD 83 UTM ZONE 10 OWNER

TABLE OF CROSSINGS

Prince Rupert Gas Transmission Project

TransCanada  
In business to deliver

**PRINCE RUPERT GAS TRANSMISSION LTD.**

PROPOSED VARIABLE WIDTH (32 to 67m) PIPELINE R/W  
FROM b-89-C, 93-O-10 TO a-18-A, 93-N-1  
(SHEET CHAINAGE: 184+046 TO 187+939)

Unsurveyed Crown Land, Peace River District

The intended plot size of this plan is 864mm in width by 560mm in height when plotted at a scale of 1: 5000 (use D size sheet)

BCGS: 93N.010, 93O.001/011/012/022/032/033/034/035/045/055/056

**FOCUS**  
Focus Surveys (BC) Limited Partnership  
10715 - 100th Avenue Fort St. John BC  
V1J 1Z3 250.787.0300 www.focus.ca

**FOCUS:** 130275CP02R1  
**AFC:** 500948  
**TCPL:** 004776-09-ML-03-046  
**ePASS:** 10048782

Sheet 16 of 32

REV. 1







