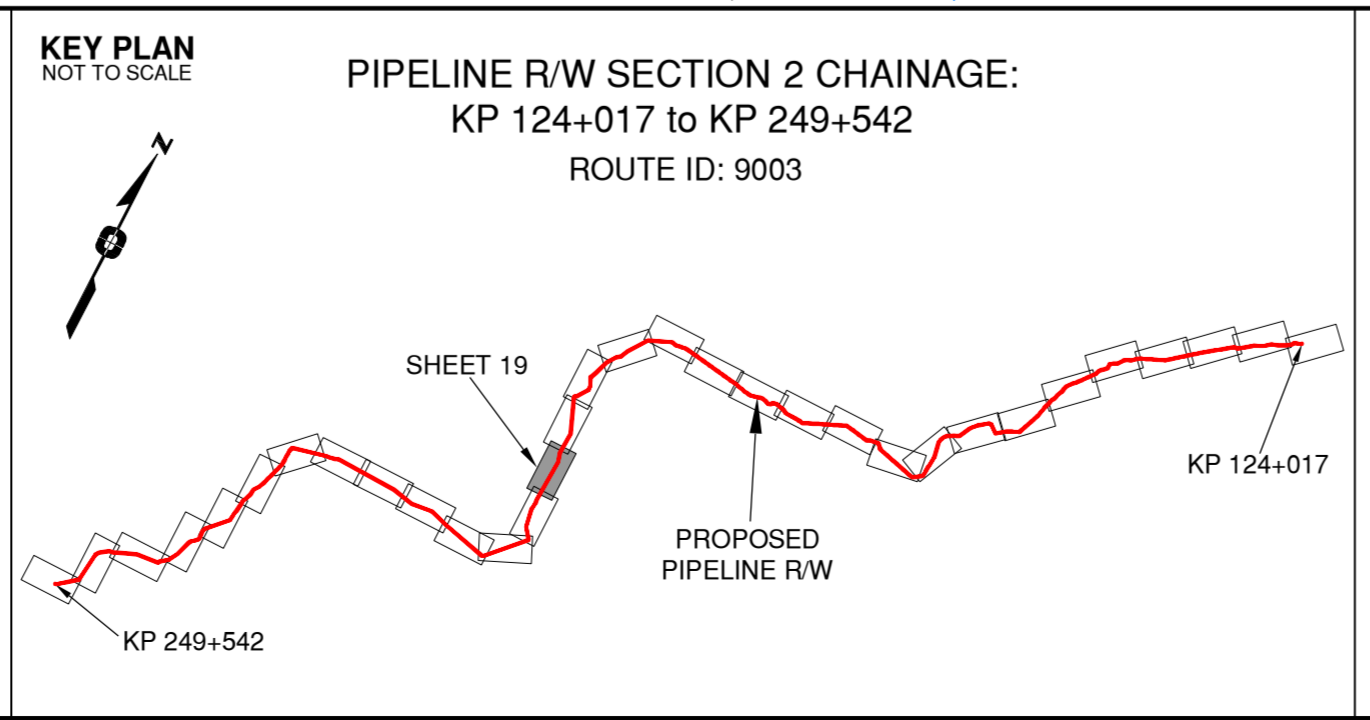


Rev	Revision Description	Date(Y/M/D)	By
0	Original Plan Prepared	2014/09/12	DC
1	Construction Plan Based on Rev.0 (2014/09/12) Except for New Construction Corridor: Shape, Label, Area Table & ePass	2014/12/31	DC

LEGEND

Proposed Pipeline R/W shown thus: [Symbol]	Fish/Wildlife Reserve bdy shown thus: [Symbol]
Proposed Temp. Workspaces shown thus: TWS / TWS	Grazing Tenure bdy shown thus: [Symbol]
Proposed Log Decks & Storage Sites shown thus: [Symbol]	Mineral Claim bdy shown thus: [Symbol]
Right of Way shown thus: [Symbol]	Tree Farm Licence shown thus: [Symbol]
Roads shown thus: [Symbol]	Quarry Reserve bdy shown thus: [Symbol]
Highway shown thus: [Symbol]	Ungulate Winter Range bdy shown thus: UWR
Railway line shown thus: [Symbol]	Visual Land Inventory shown thus: [Symbol]
Seismic line/trail shown thus: [Symbol]	Watershed Reserve bdy shown thus: [Symbol]
Recreation Tenure shown thus: [Symbol]	Wind Tenure bdy shown thus: [Symbol]
Drainages shown thus: [Symbol]	Woodlot bdy shown thus: [Symbol]
Buried cable shown thus: [Symbol]	Buried pipe shown thus: [Symbol]
Misc Reserve/Notation bdy shown thus: [Symbol]	Misc Licence/Permit bdy shown thus: [Symbol]
Overhead powerline shown thus: [Symbol]	Stantec Wetland / Classification shown thus: [Symbol]
Riparian Reserve Zone shown thus: [Symbol]	Crossings shown thus: [Symbol]
Riparian Management Zone shown thus: [Symbol]	Old Growth Management Area shown thus: [Symbol]
Forest Cover Reserve shown thus: [Symbol]	Archaeological site shown thus: [Symbol]
Agricultural Land Reserve bdy shown thus: ALR	Coal Tenure bdy shown thus: [Symbol]
Coal Tenure bdy shown thus: [Symbol]	Cutblock bdy shown thus: [Symbol]
Fence bdy shown thus: [Symbol]	



APPROVED BY _____

PROJECT ENGINEER _____

TABLE OF CROSSINGS

No.	STATION	DESCRIPTION	NAD 83 UTM ZONE 10	OWNER
T00867	199+930	Forestry Road / LGGR / R09818 19	N 6120497 E 460657	Canadian Forest Products Ltd.
W02886	198+633	Trib to Nation River / S6 / RRZ = 0 RMZ = 20	N 6121793 E 460909	ILMB
T00959	198+515	Forestry Road / LGGR / R09818 25	N 6121911 E 460914	Canadian Forest Products Ltd.
T00945	198+076	Forestry Road / LGGR / R09818 26	N 6122349 E 460932	Canadian Forest Products Ltd.
W02885	197+503	Trib to Nation River / S3 / RRZ = 20 RMZ = 20	N 6122921 E 460955	ILMB
T00758	197+323	Forestry Road / LGGR / R09818 22	N 6123097 E 460924	Canadian Forest Products Ltd.

Prince Rupert Gas Transmission Project **TransCanada**
In business to deliver

PRINCE RUPERT GAS TRANSMISSION LTD.

PROPOSED VARIABLE WIDTH (32 to 67m) PIPELINE R/W
FROM b-89-C, 93-O-10 TO a-18-A, 93-N-1
(SHEET CHAINAGE: 196+379 TO 200+365)
Unsurveyed Crown Land, Peace River District

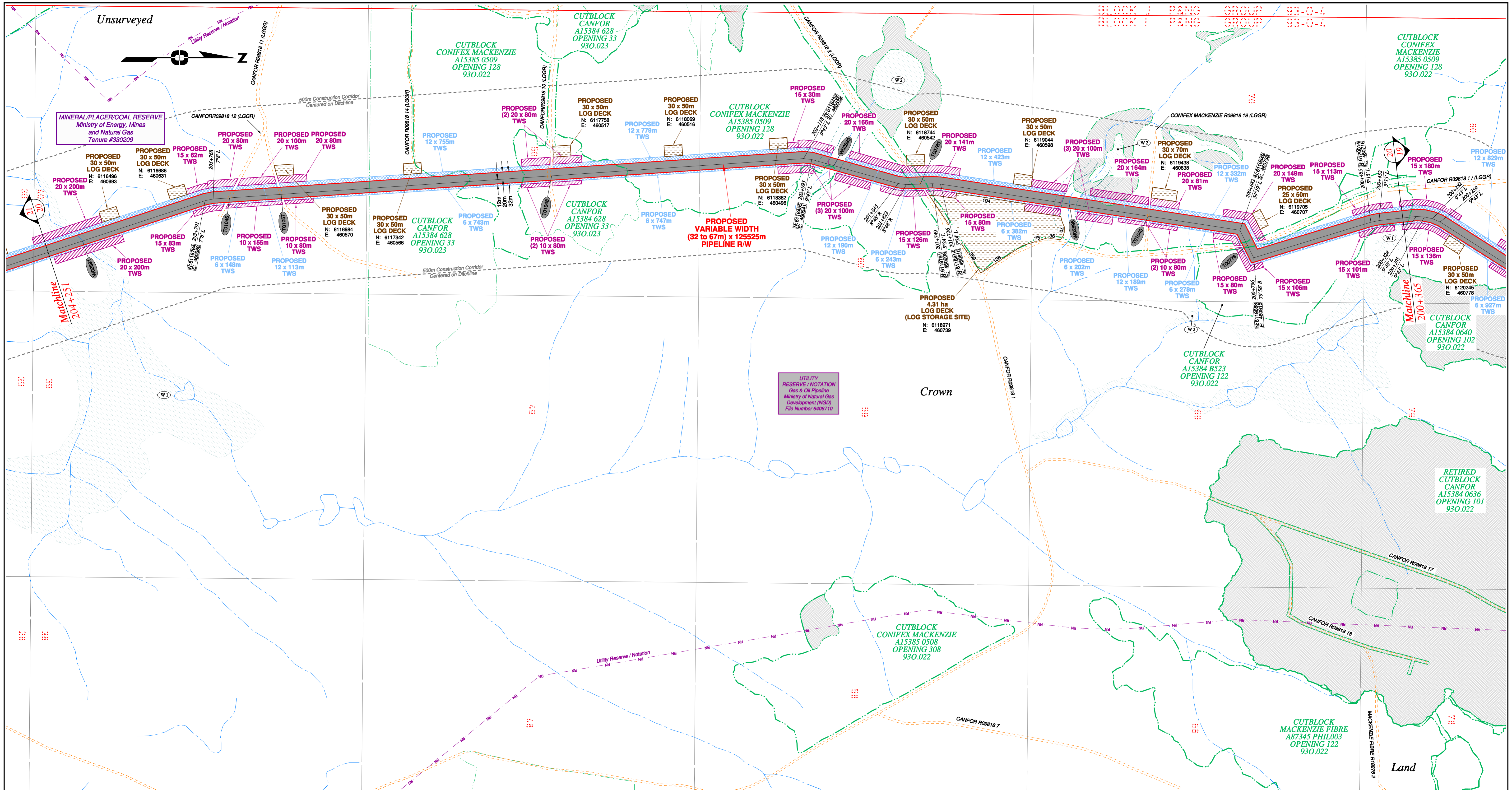
The intended plot size of this plan is 864mm in width by 560mm in height when plotted at a scale of 1: 5000 (use D size sheet)

BCGS: 93N.010, 93O.001/011/012/022/032/033/034/035/045/055/056

FOCUS
Focus Surveys (BC) Limited Partnership
10716 - 100th Avenue Fort St. John BC
V1J 1Z3 250.757.0300 www.focus.ca

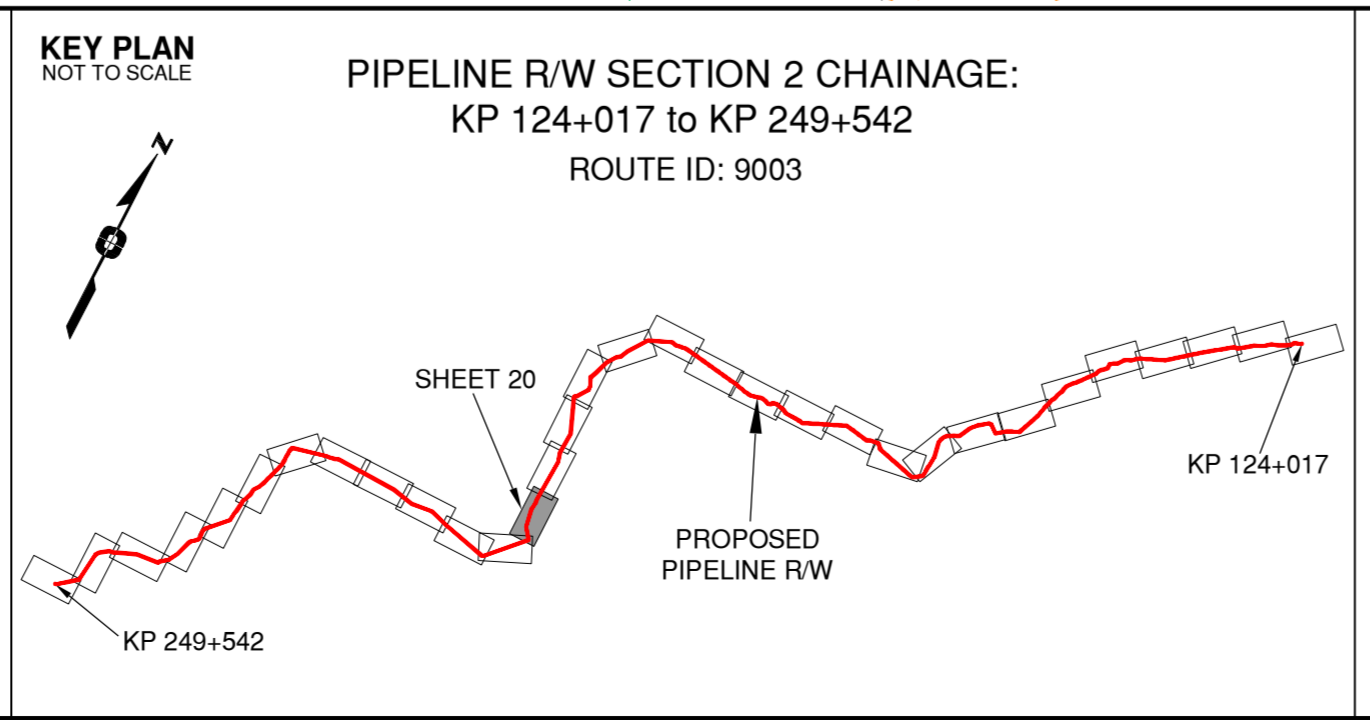
FOCUS: 130275CP02R1
AFE: 500948
TCPL: 004776-09-ML-03-049
ePASS: 10048782

Sheet 19 of 32 **REV.** 1



Rev	Revision Description	Date(Y/M/D)	By
0	Original Plan Prepared	2014/09/12	DC
1	Construction Plan Based on Rev.0 (2014/09/12) Except for New Construction Corridor; Shape, Label, Area Table & ePass	2014/12/31	DC

LEGEND	
Proposed Pipeline R/W shown thus:	Fish/Wildlife Reserve bdy shown thus:
Proposed Temp. Workspaces shown thus:	Grazing Tenure bdy shown thus:
Proposed Log Decks & Storage Sites shown thus:	Mineral Claim bdy shown thus:
Right of Way shown thus:	Tree Farm Licence shown thus:
Roads shown thus:	Ungulate Winter Range bdy shown thus:
Highway shown thus:	Visual Land Inventory shown thus:
Railway line shown thus:	Watershed Reserve bdy shown thus:
Seismic line/trail shown thus:	Recreation Tenure shown thus:
Drainages shown thus:	Woodlot bdy shown thus:
Buried cable shown thus:	Fault Line shown thus:
Misc Reserve/Notation bdy shown thus:	Misc Licence/Permit bdy shown thus:
Riparian Reserve Zone shown thus:	Stantec Wetland / Classification shown thus:
Riparian Management Zone shown thus:	Crossings shown thus:
Forest Cover Reserve shown thus:	Old Growth Management Area shown thus:
Archaeological site shown thus:	Residences shown thus:
Agricultural Land Reserve bdy shown thus:	
Coal Tenure bdy shown thus:	
Cutblock bdy shown thus:	
Fence bdy shown thus:	



APPROVED BY _____

PROJECT ENGINEER _____

No.	STATION	DESCRIPTION	NAD 83 UTM ZONE 10	OWNER
W02891	204-150	Trib to Nation River / S4 / RRZ = 0 RMZ = 30	N 6116422 E 460788	ILMB
T01046	203-721	Forestry Road / LGGR / R09818 12	N 6116832 E 460648	Canadian Forest Products Ltd.
T01057	203-578	Forestry Road / LGGR / R09818 11	N 6116976 E 460638	Canadian Forest Products Ltd.
T01048	202-822	Forestry Road / LGGR / R09818 10	N 6117730 E 460587	Canadian Forest Products Ltd.
W02889	202-030	Trib to Nation River / S3 / RRZ = 20 RMZ = 20	N 6118517 E 460558	ILMB
T00783	201-782	Forestry Road / LGGR / R09818 2	N 6118758 E 460509	Canadian Forest Products Ltd.
W02896	201-363	Trib to Nation River / S3 / RRZ = 20 RMZ = 20	N 6119173 E 460565	ILMB
T01040	201-139	Forestry Road / LGGR / R09818 19	N 6119394 E 460699	Canadian Forest Products Ltd.
T00776	200-835	Forestry Road / LGGR / R09818 1	N 6119670 E 460780	Canadian Forest Products Ltd.
No.	STATION DESCRIPTION		NAD 83 UTM ZONE 10	OWNER

TABLE OF CROSSINGS

Prince Rupert Gas Transmission Project

PRINCE RUPERT GAS TRANSMISSION LTD.

PROPOSED VARIABLE WIDTH (32 to 67m) PIPELINE R/W FROM b-89-C, 93-0-10 TO a-18-A, 93-N-1 (SHEET CHAINAGE: 200+365 TO 204+251)

Unsurveyed Crown Land, Peace River District

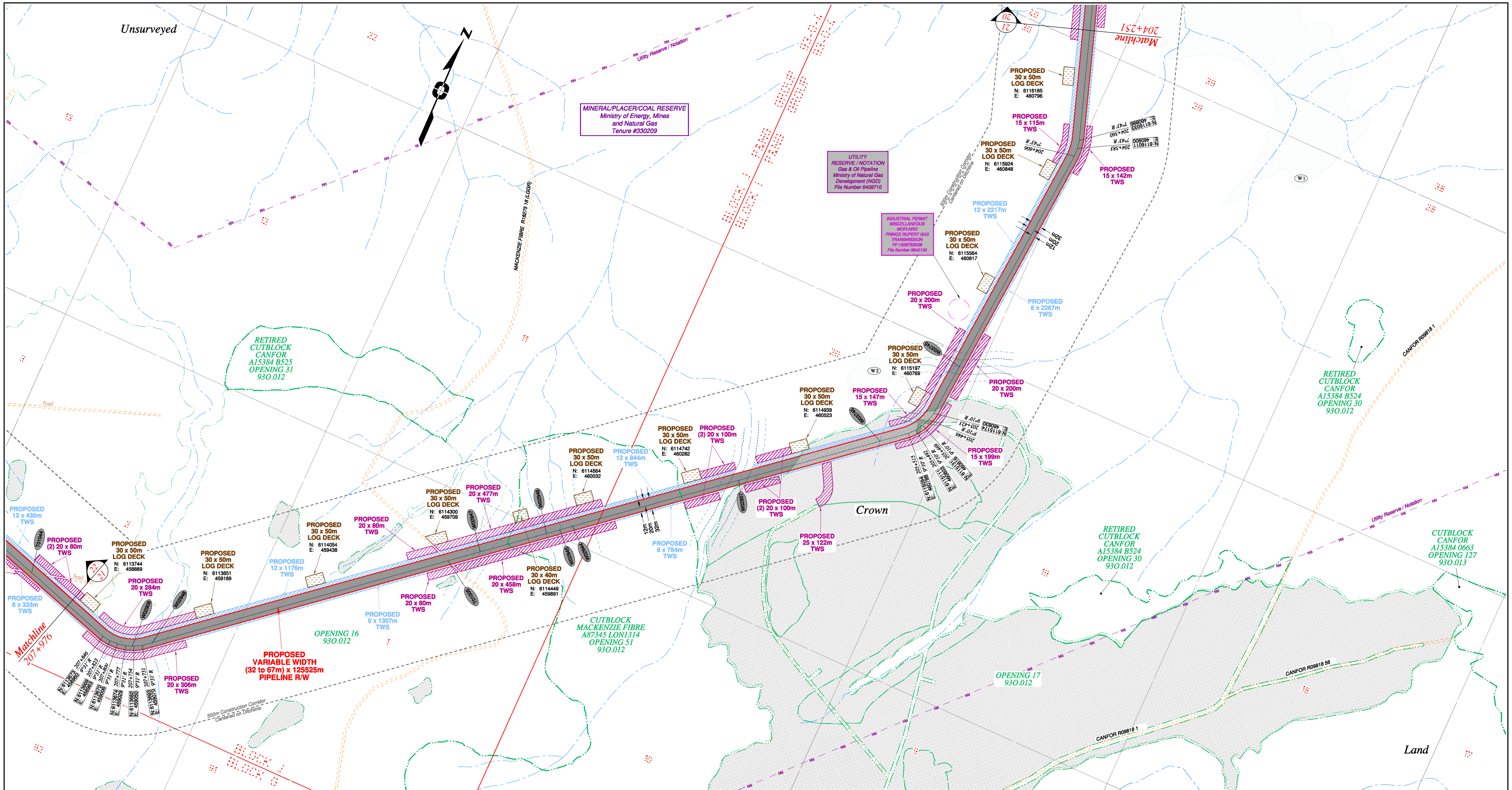
The intended plot size of this plan is 864mm in width by 560mm in height when plotted at a scale of 1: 5000 (use D size sheet)

BCGS: 93N.010, 93O.001/011/012/022/032/033/034/035/045/055/056

FOCUS Focus Surveys (BC) Limited Partnership
10715 - 100th Avenue, Fort St. John, BC V1J 1Z3, 250.787.0300, www.focus.ca

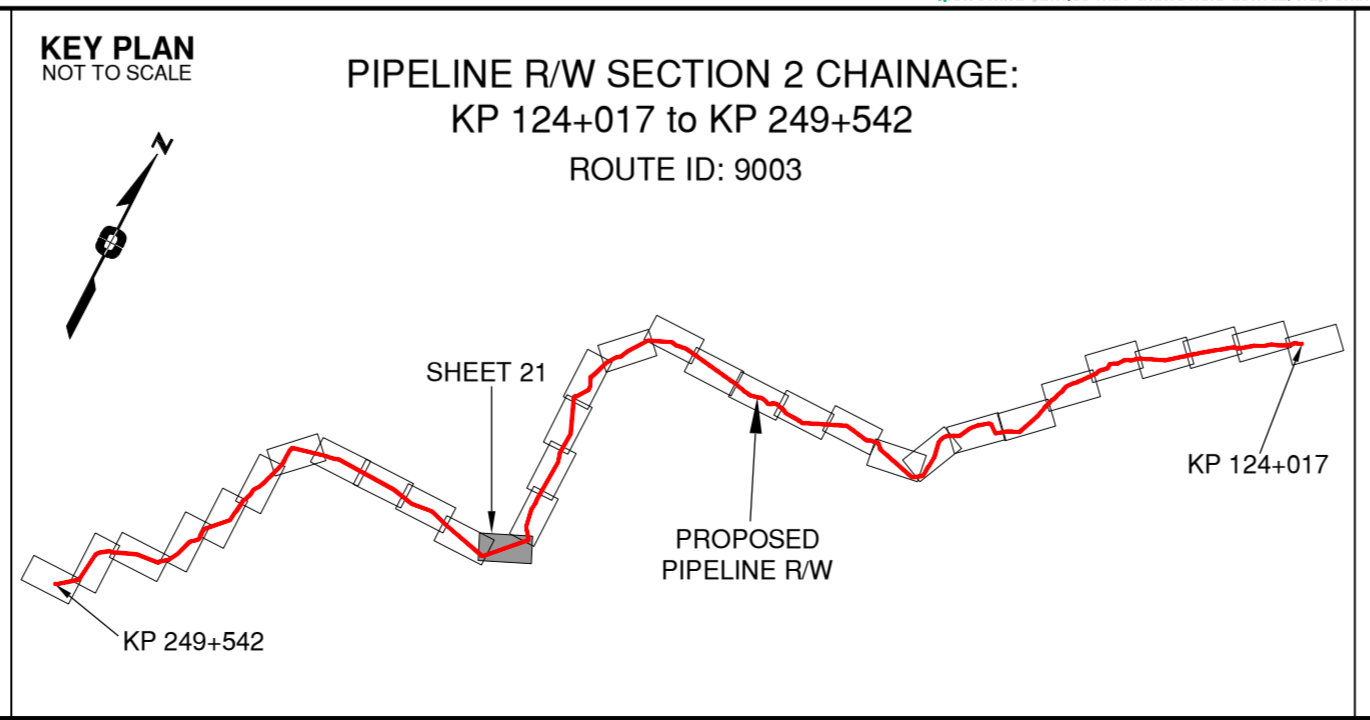
FOCUS: 130275C02R1
AFPE: 500948
TCPL: 004776-09-ML-03-050
ePASS: 10048782

Sheet 20 of 32 **REV. 1**



Rev	Revision Description	Date(Y/M/D)	By
0	Original Plan Prepared	2014/09/12	DC
1	Construction Plan Based on Rev.0 (2014/09/12) Except for New Construction Corridor, Shape, Label, Area Table & ePASS	2014/12/31	DC

LEGEND	
Proposed Pipeline R/W shown thus: [Symbol]	Fish/Wildlife Reserve bdy shown thus: [Symbol]
Proposed Temp. Workspaces shown thus: TWS / TWS	Grazing Tenure bdy shown thus: [Symbol]
Proposed Log Decks & Storage Sites shown thus: [Symbol]	Mineral Claim bdy shown thus: [Symbol]
Right of Way shown thus: [Symbol]	Tree Farm Licence shown thus: [Symbol]
Roads shown thus: [Symbol]	Quarry Reserve bdy shown thus: [Symbol]
Highway shown thus: [Symbol]	Ungulate Winter Range bdy shown thus: UWR
Railway line shown thus: [Symbol]	Visual Land Inventory shown thus: [Symbol]
Seismic line/trail shown thus: [Symbol]	Watershed Reserve bdy shown thus: [Symbol]
Recreation Tenure shown thus: [Symbol]	Wind Tenure bdy shown thus: [Symbol]
Drainages shown thus: [Symbol]	Woodlot bdy shown thus: [Symbol]
Buried cable shown thus: [Symbol]	Fault Line shown thus: [Symbol]
Misc Reserve/Notation bdy shown thus: [Symbol]	Misc Reserve/Notation bdy shown thus: [Symbol]
Overhead powerline shown thus: [Symbol]	Stantec Wetland / Classification shown thus: [Symbol]
Riparian Reserve Zone shown thus: [Symbol]	Crossings shown thus: [Symbol]
Riparian Management Zone shown thus: [Symbol]	Old Growth Management Area shown thus: [Symbol]
Forest Cover Reserve shown thus: [Symbol]	Archaeological site shown thus: [Symbol]
Archaeological site shown thus: [Symbol]	Agricultural Land Reserve bdy shown thus: ALR
Agricultural Land Reserve bdy shown thus: ALR	Coal Tenure bdy shown thus: [Symbol]
Coal Tenure bdy shown thus: [Symbol]	Cutblock bdy shown thus: [Symbol]
Cutblock bdy shown thus: [Symbol]	Fence bdy shown thus: [Symbol]
Fence bdy shown thus: [Symbol]	



APPROVED BY _____

PROJECT ENGINEER _____

STATION	DESCRIPTION	OWNER
W02908	207+746 Trib to Nation River / S4 / RRZ = 0 RMZ = 30	N 6113680 E 459046 ILMB
W02949	207+700 Trib to Nation River / S4 / RRZ = 0 RMZ = 30	N 6113713 E 459094 ILMB
T01025	206+848 Forestry Road / LOGR / R18275 18	N 6114252 E 459756 Mackenzie Fibre Mgmt. Corp.
W02947	206+752 Trib to Nation River / S4 / RRZ = 0 RMZ = 30	N 6114311 E 459289 ILMB
W02946	206+561 Trib to Nation River / S4 / RRZ = 0 RMZ = 30	N 6114432 E 459977 ILMB
W02945	206+522 Trib to Nation River / S4 / RRZ = 0 RMZ = 30	N 6114457 E 460007 ILMB
W02944	206+486 Trib to Nation River / S4 / RRZ = 0 RMZ = 30	N 6114480 E 460035 ILMB
W02957	206+005 Trib to Nation River / S3 / RRZ = 20 RMZ = 20	N 6114784 E 460408 ILMB
W03745	205+596 Trib to Nation River / RRZ = 0 RMZ = 0	N 6115042 E 460725 ILMB
W02910	205+274 Trib to Nation River / S3 / RRZ = 20 RMZ = 20	N 6115322 E 460843 ILMB
No.	STATION DESCRIPTION	NAD 83 UTM ZONE 10

Prince Rupert Gas Transmission Project **TransCanada**
In business to deliver

PRINCE RUPERT GAS TRANSMISSION LTD.

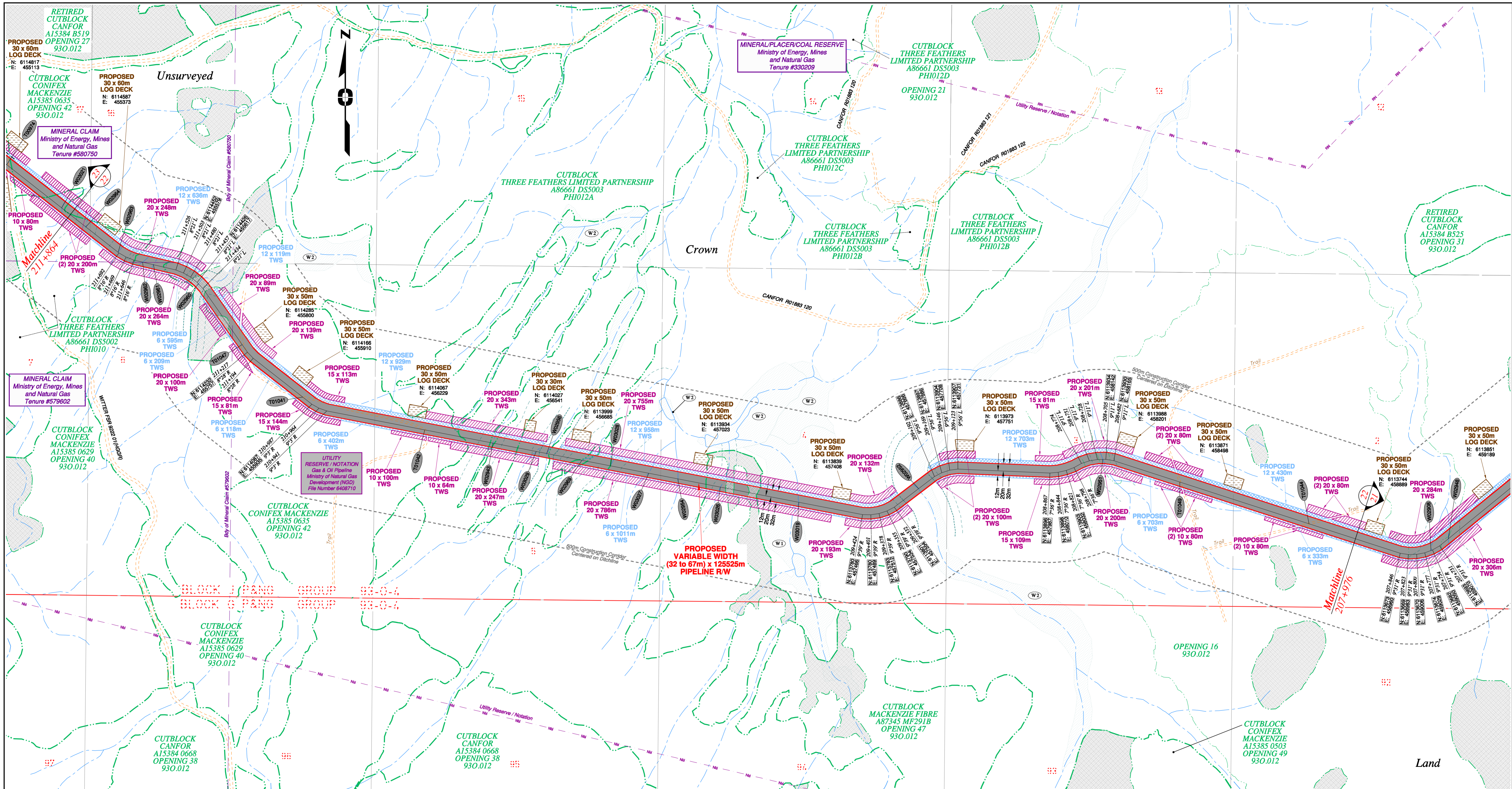
PROPOSED VARIABLE WIDTH (32 to 67m) PIPELINE R/W FROM b-89-C, 93-0-10 TO a-18-A, 93-N-1 (SHEET CHAINAGE: 204+251 TO 207+976)

Unsurveyed Crown Land, Peace River District

The intended plot size of this plan is 864mm in width by 560mm in height when plotted at a scale of 1: 5000 (use D size sheet)

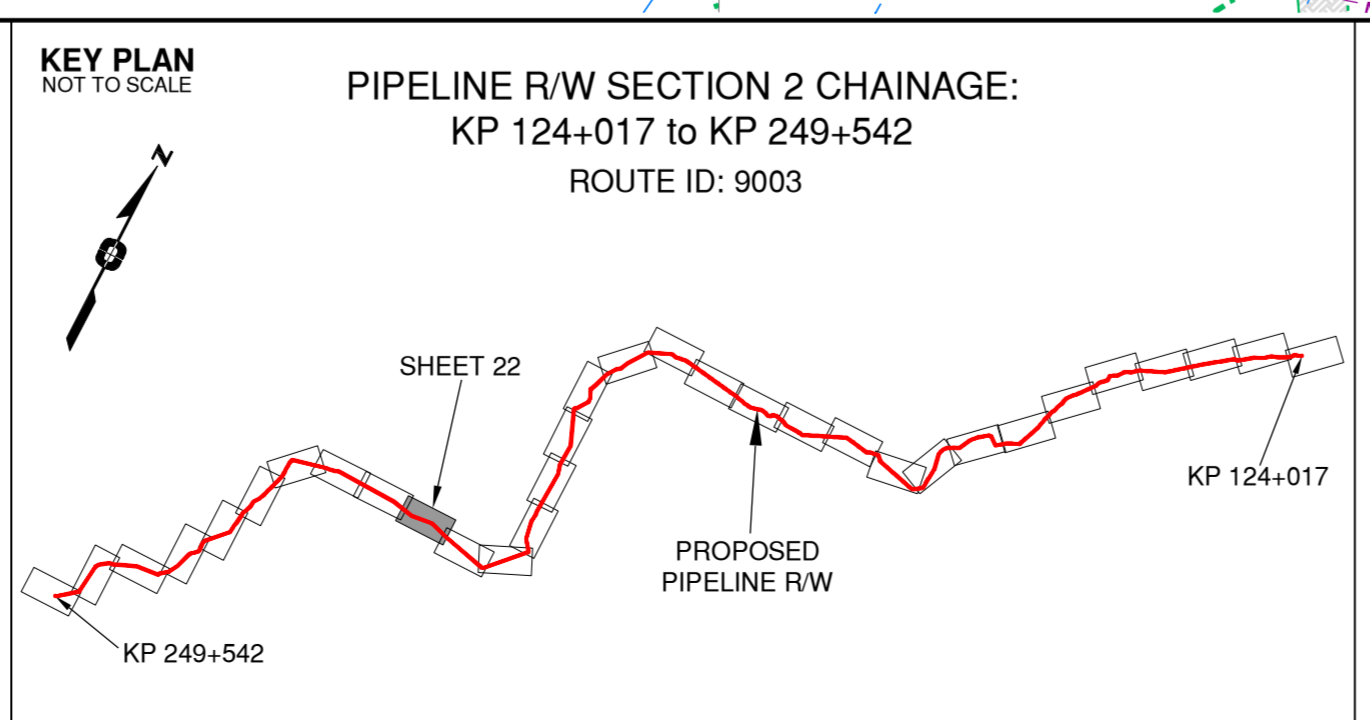
BCGS: 93N.010, 93O.011/011/012/022/032/033/034/035/045/055/056

FOCUS Focus Surveys (BC) Limited Partnership 10716 - 100th Avenue Fort St. John BC V1J 1Z3 250.757.0300 www.focus.ca	FOCUS: 130275CP02R1 APE: 500948 TCPL: 004776-09-ML-03-051 ePASS: 10048782	Sheet 21 of 32 REV. 1
---	--	---------------------------------



Rev	Revision Description	Date(Y/M/D)	By
0	Original Plan Prepared	2014/09/12	DC
1	Construction Plan Based on Rev.0 (2014/09/12) Except for New Construction Corridor: Shape, Label, Area Table & ePass	2014/12/31	DC

LEGEND	
Proposed Pipeline R/W shown thus:	Fish/Wildlife Reserve bdy shown thus:
Proposed Temp. Workspaces shown thus:	Grazing Tenure bdy shown thus:
Proposed Log Decks & Storage Sites shown thus:	Mineral Claim bdy shown thus:
Right of Way shown thus:	Tree Farm Licence shown thus:
Quarry Reserve bdy shown thus:	Ungulate Winter Range bdy shown thus:
Highway shown thus:	Visual Land Inventory shown thus:
Railway line shown thus:	Watershed Reserve bdy shown thus:
Seismic line/trail shown thus:	Recreation Tenure bdy shown thus:
Wind Tenure bdy shown thus:	Woodlot bdy shown thus:
Drainages shown thus:	Fault Line shown thus:
Buried cable shown thus:	Misc Reserve/Notation bdy shown thus:
Overhead powerline shown thus:	Misc Licence/Permit bdy shown thus:
Riparian Reserve Zone shown thus:	Stantec Wetland / Classification shown thus:
Riparian Management Zone shown thus:	Crossings shown thus:
Forest Cover Reserve shown thus:	Old Growth Management Area shown thus:
Archaeological site shown thus:	Residences shown thus:
Agricultural Land Reserve bdy shown thus:	Power Pole shown thus:
Coal Tenure bdy shown thus:	
Cutblock bdy shown thus:	
Fence bdy shown thus:	



APPROVED BY _____

PROJECT ENGINEER _____

No.	STATION	DESCRIPTION	OWNER
W02964	211+809	Trib to Nation River / S4 / RRZ = 0 RMZ = 30	N 6114580 E 455307
W02963	211+694	Trib to Nation River / S4 / RRZ = 0 RMZ = 30	N 6114510 E 455397
W02962	211+620	Trib to Nation River / S4 / RRZ = 0 RMZ = 30	N 6114489 E 455495
W02961	211+590	Trib to Nation River / S4 / RRZ = 0 RMZ = 30	N 6114475 E 455495
W02960	211+451	Trib to Nation River / S3 / RRZ = 20 RMZ = 20	N 6114422 E 455620
T01047	211+243	Trail / Condition Unknown	N 6114253 E 455742
T01041	211+019	Trail / Condition Unknown	N 6114107 E 455910
T01042	210+664	Trail / Condition Unknown	N 6114016 E 456249
W02943	210+471	Trib to Nation River / S4 / RRZ = 0 RMZ = 30	N 6113979 E 456439
W03029	210+348	Trib to Nation River / RRZ = 0 RMZ = 0	N 6113956 E 456559
W02956	210+319	Trib to Nation River / S3 / RRZ = 20 RMZ = 20	N 6113950 E 456588
W02969	210+218	Trib to Nation River / S4 / RRZ = 0 RMZ = 30	N 6113931 E 456686
W03028	210+138	Trib to Nation River / RRZ = 0 RMZ = 0	N 6113916 E 456785
W03027	210+029	Trib to Nation River / RRZ = 0 RMZ = 0	N 6113895 E 456872
W02954	209+947	Trib to Nation River / S6 / RRZ = 0 RMZ = 20	N 6113880 E 456923
W03026	209+827	Trib to Nation River / RRZ = 0 RMZ = 0	N 6113857 E 457071
W03019	209+604	Trib to Nation River / RRZ = 0 RMZ = 0	N 6113815 E 457289
W02952	209+247	Trib to Nation River / S1 / RRZ = 50 RMZ = 20	N 6113852 E 457622
W02951	208+713	Trib to Nation River / S4 / RRZ = 0 RMZ = 30	N 6113934 E 458134
T01049	208+489	Trail / Condition Unknown	N 6113871 E 458348
T01044	208+112	Trail / Condition Unknown	N 6113755 E 458707
No.	STATION	DESCRIPTION	NAD 83 UTM ZONE 10

TABLE OF CROSSINGS

Prince Rupert Gas Transmission Project

TransCanada
In business to deliver

PRINCE RUPERT GAS TRANSMISSION LTD.

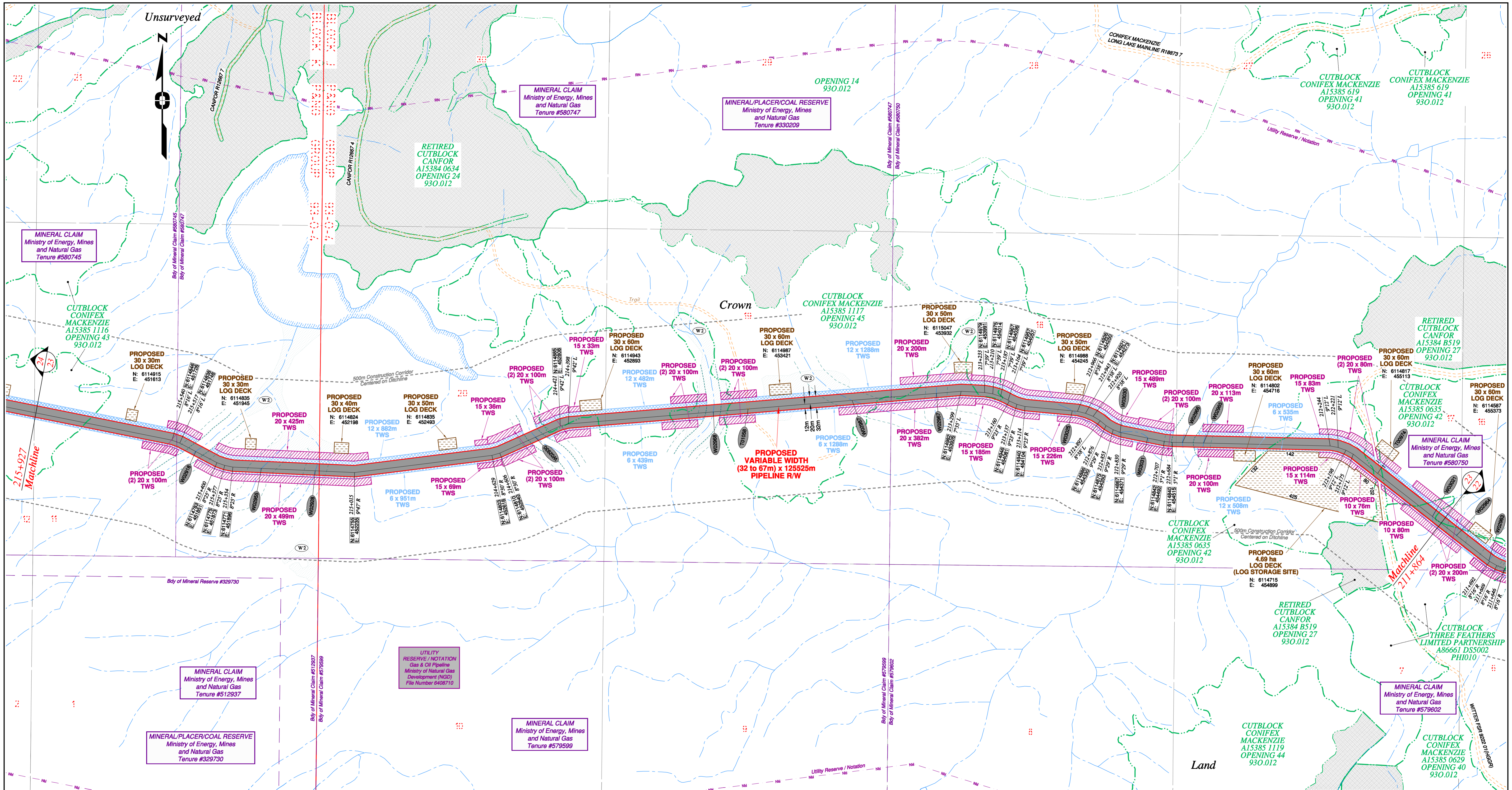
PROPOSED VARIABLE WIDTH (32 to 67m) PIPELINE R/W FROM b-89-C, 93-O-10 TO a-18-A, 93-N-1 (SHEET CHAINAGE: 207+976 TO 211+864)

Unsurveyed Crown Land, Peace River District

Scale: 1:5000 (use D size sheet)

BCGS: 93N.010, 93O.001/011/012/022/032/033/034/035/045/055/056

FOCUS Focus Surveys (BC) Limited Partnership 10710 - 100th Avenue, Fort St. John, BC V1J 1Z3, 250.787.0300, www.focus.ca	FOCUS: 130275CP02R1 TCPL: 004776-09-ML-03-052 ePASS: 10048782	Sheet 22 of 32 REV. 1
--	--	--------------------------

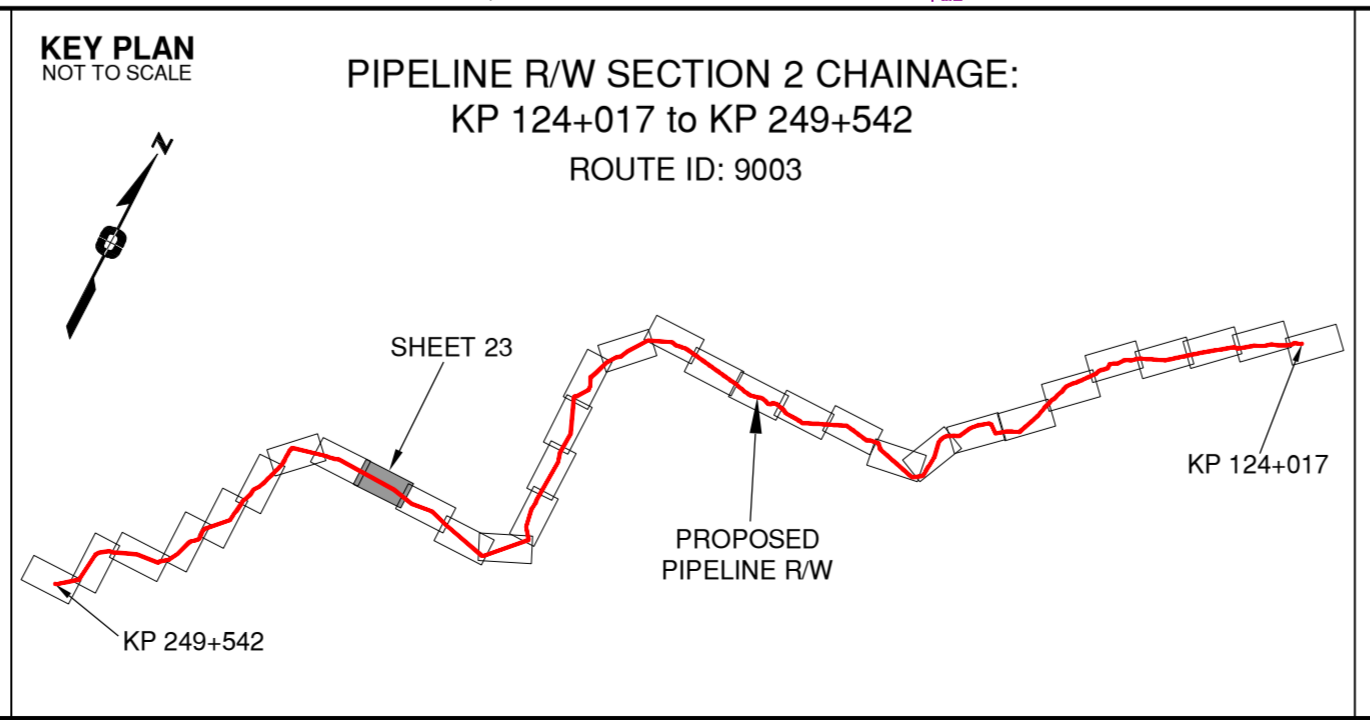


Rev	Revision Description	Date(Y/M/D)	By
0	Original Plan Prepared	2014/09/12	DC
1	Construction Plan Based on Rev.0 (2014/09/12) Except for New Construction Corridor, Shape, Label, Area Table & ePass	2014/12/31	DC

NOTES:

- Co-ordinates are NAD 83 Grid, UTM Zone 9 and Zone 10. Distances shown are in metres and decimals thereof. Chainages are two-dimensional and are in pipeline direction. Pipeline segment length derived from ditchline chainages.
- Fault Lines data has been provided from BGC Engineering Inc. Desktop Study dated December 20, 2013.
- Water crossing information has been provided by Stantec. Wetlands data has been provided by Stantec dated August 29, 2014. Freshwater Atlas wetlands outside of construction corridor have been removed from scenery.
- Cutblock data is confirmed using information from the Government of BC websites for Forest MapView and MapBC.
- This pipeline section is not within the Agricultural Land Reserve.
- Field Survey Completed July 15, 2014
- This plan represents the best information available at the time of survey. Focus Surveys and its employees take no responsibility for the location of any underground conduits, pipes, or other facilities whether shown on or omitted from this plan. All underground installations should be located by the respective authorities prior to construction.

LEGEND	
Proposed Pipeline R/W shown thus:	Fish/Wildlife Reserve bdy shown thus:
Proposed Temp. Workspaces shown thus:	Grazing Tenure bdy shown thus:
Proposed Log Decks & Storage Sites shown thus:	Mineral Claim bdy shown thus:
Right of Way shown thus:	Tree Farm Licence shown thus:
Roads shown thus:	Quarry Reserve bdy shown thus:
Highway shown thus:	Ungulate Winter Range bdy shown thus:
Railway line shown thus:	Visual Land Inventory shown thus:
Seismic line/trail shown thus:	Watershed Reserve bdy shown thus:
Recreation Tenure shown thus:	Wind Tenure bdy shown thus:
Drainages shown thus:	Woodlot bdy shown thus:
Buried cable shown thus:	Fault Line shown thus:
Buried pipe shown thus:	Misc Reserve/Notation bdy shown thus:
Overhead powerline shown thus:	Misc Licence/Permit bdy shown thus:
Riparian Reserve Zone shown thus:	Stantec Wetland / Classification shown thus:
Riparian Management Zone shown thus:	Crossings shown thus:
Forest Cover Reserve shown thus:	Old Growth Management Area shown thus:
Archaeological site shown thus:	Residences shown thus:
Agricultural Land Reserve bdy shown thus:	Coal Tenure bdy shown thus:
Cutblock bdy shown thus:	Fence bdy shown thus:
Power Pole shown thus:	



APPROVED BY _____

PROJECT ENGINEER _____

STATION	DESCRIPTION	NAD 83 UTM ZONE 10	OWNER
W02918	215+467 Trib to Nation River / S3 / RRZ = 20 RMZ = 20	N 6114914 E 451792	ILMB
W02955	215+266 Trib to Nation River / S4 / RRZ = 0 RMZ = 30	N 6114767 E 451975	ILMB
W02928	215+124 Trib to Nation River / S4 / RRZ = 0 RMZ = 30	N 6114760 E 452125	ILMB
W02930	214+496 Trib to Nation River / S3 / RRZ = 20 RMZ = 20	N 6114854 E 452739	ILMB
W02968	213+992 Trib to Nation River / S3 / RRZ = 20 RMZ = 20	N 6114925 E 453235	ILMB
T01058	213+894 Trail / Condition Unknown	N 6114933 E 453332	Crown
W02967	213+603 Trib to Nation River / S4 / RRZ = 0 RMZ = 30	N 6114957 E 453622	ILMB
W02967	213+368 Trib to Nation River / S4 / RRZ = 0 RMZ = 30	N 6114976 E 453857	ILMB
W03025	212+990 Trib to Nation River / RRZ = 0 RMZ = 0	N 6114928 E 454236	ILMB
W03030	212+832 Trib to Nation River / RRZ = 0 RMZ = 0	N 6114967 E 454369	ILMB
W03031	212+754 Trib to Nation River / S2 / RRZ = 0 RMZ = 0	N 6114852 E 454446	ILMB
W02966	212+656 Trib to Nation River / S2 / RRZ = 30 RMZ = 20	N 6114839 E 454543	ILMB
W02965	212+597 Trib to Nation River / S6 / RRZ = 0 RMZ = 20	N 6114838 E 454602	ILMB
T00974	212+088 Forest Service Road (Witter) / HGGR / FSR 9222 01	N 6114753 E 455087	District Manager MacKenzie
W03021	211+894 Trib to Nation River / RRZ = 0 RMZ = 0	N 6114633 E 455240	ILMB

TABLE OF CROSSINGS

Prince Rupert Gas Transmission Project

TransCanada
In business to deliver

PRINCE RUPERT GAS TRANSMISSION LTD.

PROPOSED VARIABLE WIDTH (32 to 67m) PIPELINE R/W FROM b-89-C, 93-0-10 TO a-18-A, 93-N-1 (SHEET CHAINAGE: 211+864 TO 215+927)

Unsurveyed Crown Land, Peace River District

The intended plot size of this plan is 864mm in width by 560mm in height when plotted at a scale of 1: 5000 (use D size sheet)

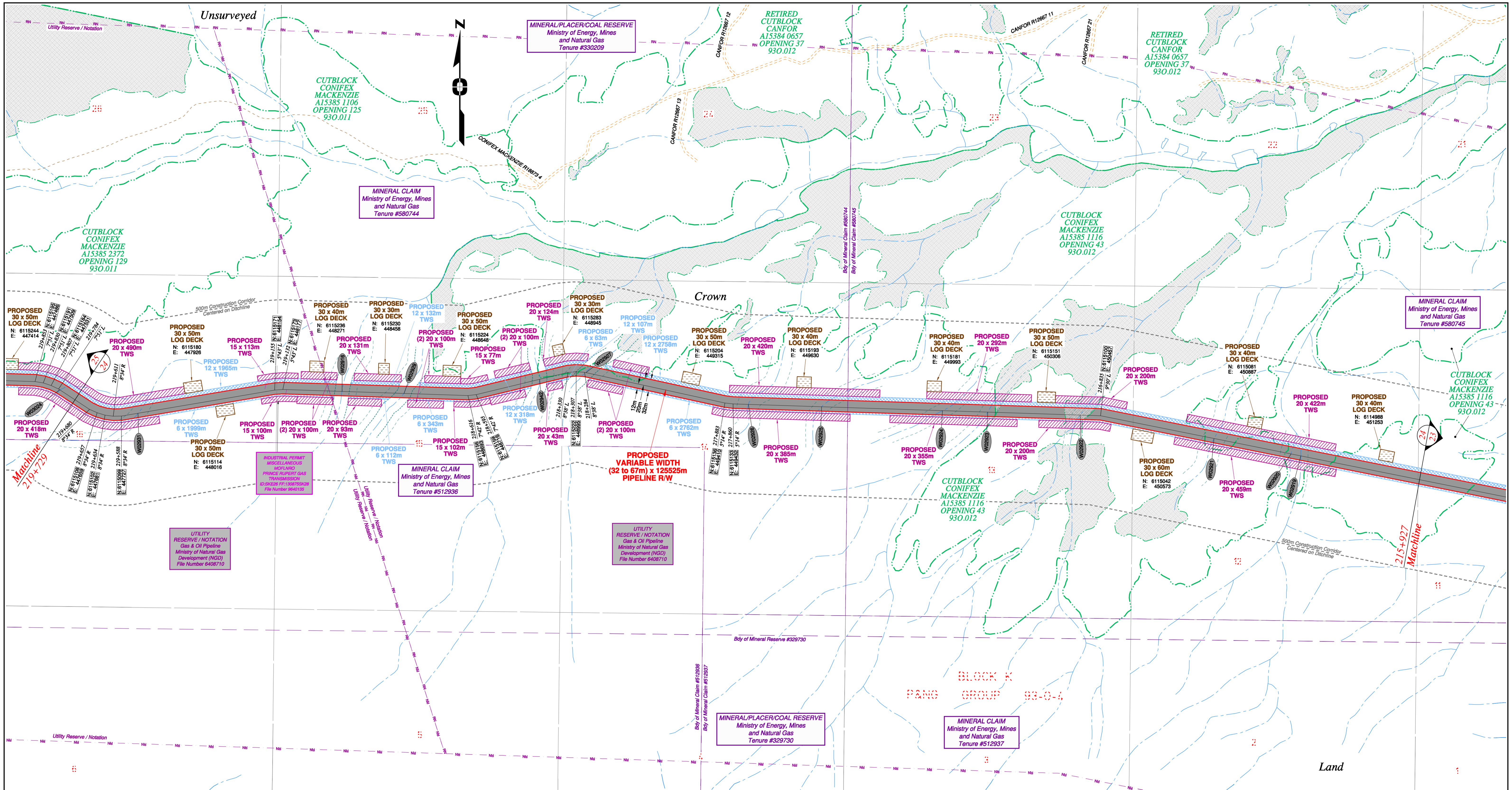
BCGS: 93M.010, 93O.001/011/012/022/032/033/034/035/045/055/056

FOCUS
Focus Surveys (BC) Limited Partnership
10715 - 100th Avenue, Fort St. John, BC
V1J 1Z3, 250.787.0300, www.focus.ca

FOCUS: 130275CP02R1
AFE: 500948
TCPL: 004776-09-ML-03-053
ePASS: 10048782

Sheet 23 of 32

REV. 1

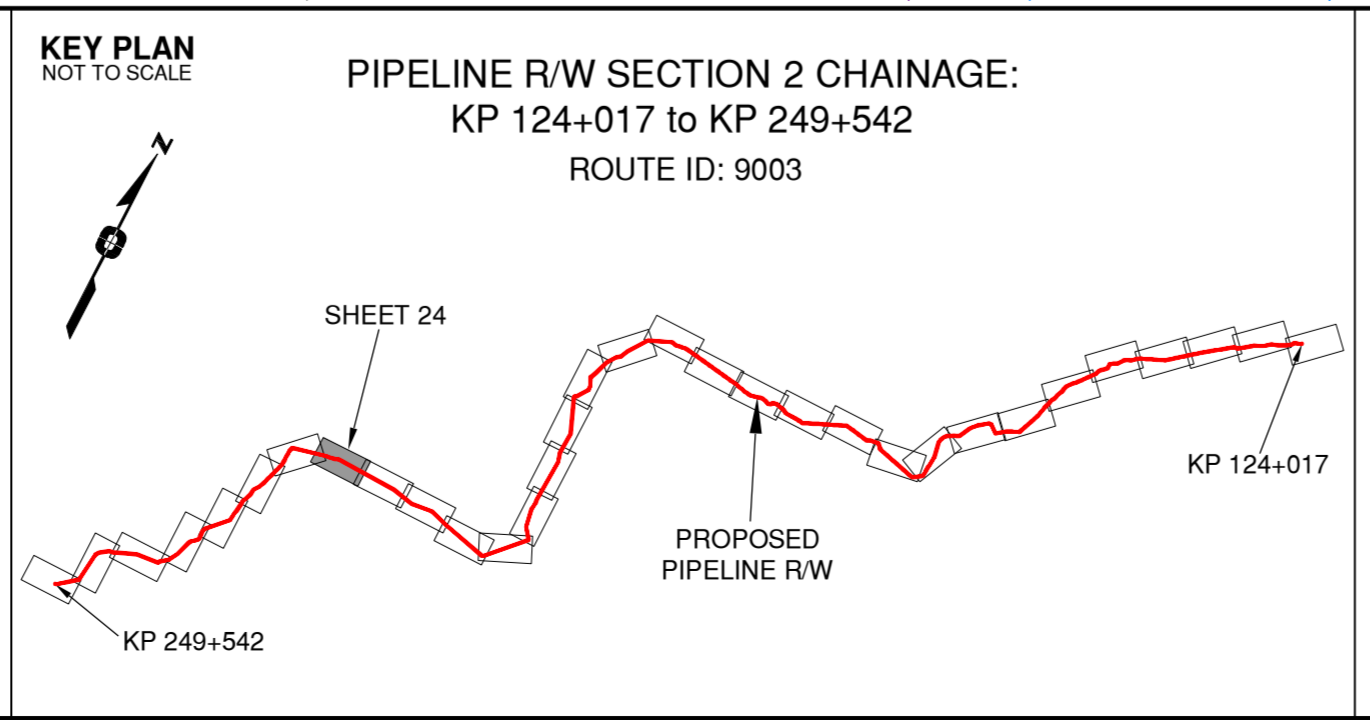


Rev	Revision Description	Date(Y/M/D)	By
0	Original Plan Prepared	2014/09/12	DC
1	Construction Plan Based on Rev.0 (2014/09/12) Except for New Construction Corridor: Shape, Label, Area Table & ePass	2014/12/31	DC

NOTES:

- Co-ordinates are NAD 83 Grid, UTM Zone 9 and Zone 10. Distances shown are in metres and decimals thereof. Chainages are two-dimensional and are on pipeline ditchline. Pipeline segment length derived from ditchline chainages.
- Fault Lines data has been provided from BGC Engineering Inc. Desktop Study dated December 20, 2013.
- Water crossing information has been provided by Stantec. Wetlands data has been provided by Stantec dated August 29, 2014. Freshwater Atlas wetlands outside of construction corridor have been removed from scenery.
- Cutblock data is confirmed using information from the Government of BC websites for Forest MapView and MapBC.
- This pipeline section is not within the Agricultural Land Reserve.
- Field Survey Completed July 15, 2014
- This plan represents the best information available at the time of survey. Focus Surveys and its employees take no responsibility for the location of any underground conduits, pipes, or other facilities whether shown on or omitted from this plan. All underground installations should be located by the respective authorities prior to construction.

LEGEND	
Proposed Pipeline R/W shown thus:	Fish/Wildlife Reserve bdy shown thus:
Proposed Temp. Workspaces shown thus: TWS / TWS	Grazing Tenure bdy shown thus:
Proposed Log Decks & Storage Sites shown thus:	Mineral Claim bdy shown thus:
Right of Way shown thus:	Tree Farm Licence shown thus:
Roads shown thus:	Quarry Reserve bdy shown thus:
Highway shown thus:	Ungulate Winter Range bdy shown thus: UWR
Railway line shown thus:	Visual Land Inventory shown thus:
Seismic line/trail shown thus:	Watershed Reserve bdy shown thus:
Recreation Tenure shown thus:	Woodlot bdy shown thus:
Drainages shown thus:	Fault Line shown thus:
Buried cable shown thus:	Misc Reserve/Notation bdy shown thus:
Overhead powerline shown thus:	Misc Licence/Permit bdy shown thus:
Riparian Reserve Zone shown thus:	Stantec Wetland / Classification shown thus:
Riparian Management Zone shown thus:	Crossings shown thus:
Forest Cover Reserve shown thus:	Old Growth Management Area shown thus:
Archaeological site shown thus:	Agricultural Land Reserve bdy shown thus:
Coal Tenure bdy shown thus:	Cutblock bdy shown thus:
Fence bdy shown thus:	Power Pole shown thus:



APPROVED BY _____

PROJECT ENGINEER _____

STATION	DESCRIPTION	OWNER
W02931	219+541 Trib to Nation River / S6 / RRZ = 0 RMZ = 20	N 6115107 E 447773 ILMB
W02916	218+967 Trib to Nation River / S6 / RRZ = 0 RMZ = 20	N 6115168 E 448342 ILMB
W02929	218+794 Trib to Nation River / S6 / RRZ = 0 RMZ = 20	N 6115162 E 448515 ILMB
W02942	218+410 Trib to Nation River / S6 / RRZ = 0 RMZ = 20	N 6115201 E 448893 ILMB
W02927	218+279 Trib to Nation River / S6 / RRZ = 0 RMZ = 20	N 6115220 E 448022 ILMB
W02926	217+817 Trib to Nation River / S4 / RRZ = 0 RMZ = 30	N 6115131 E 448475 ILMB
W02925	217+613 Trib to Nation River / S6 / RRZ = 0 RMZ = 20	N 6115125 E 449679 ILMB
W02924	217+275 Trib to Nation River / S6 / RRZ = 0 RMZ = 20	N 6115114 E 450016 ILMB
W02923	217+149 Trib to Nation River / S6 / RRZ = 0 RMZ = 20	N 6115110 E 450142 ILMB
W02922	216+891 Trib to Nation River / S6 / RRZ = 0 RMZ = 20	N 6115102 E 450400 ILMB
W02921	216+512 Trib to Nation River / S4 / RRZ = 0 RMZ = 30	N 6115036 E 450773 ILMB
W02920	216+293 Trib to Nation River / S4 / RRZ = 0 RMZ = 30	N 6114993 E 450988 ILMB
W02919	216+265 Trib to Nation River / S6 / RRZ = 0 RMZ = 20	N 6114988 E 451015 ILMB
No.	STATION DESCRIPTION	NAD 83 UTM ZONE 10 OWNER

TABLE OF CROSSINGS

Prince Rupert Gas Transmission Project
Gas Transmission Project

TransCanada
In business to deliver

PRINCE RUPERT GAS TRANSMISSION LTD.

PROPOSED VARIABLE WIDTH (32 to 67m) PIPELINE R/W
FROM b-89-C, 93-O-10 TO a-18-A, 93-N-1
(SHEET CHAINAGE: 215+927 TO 219+729)

Unsurveyed Crown Land, Peace River District

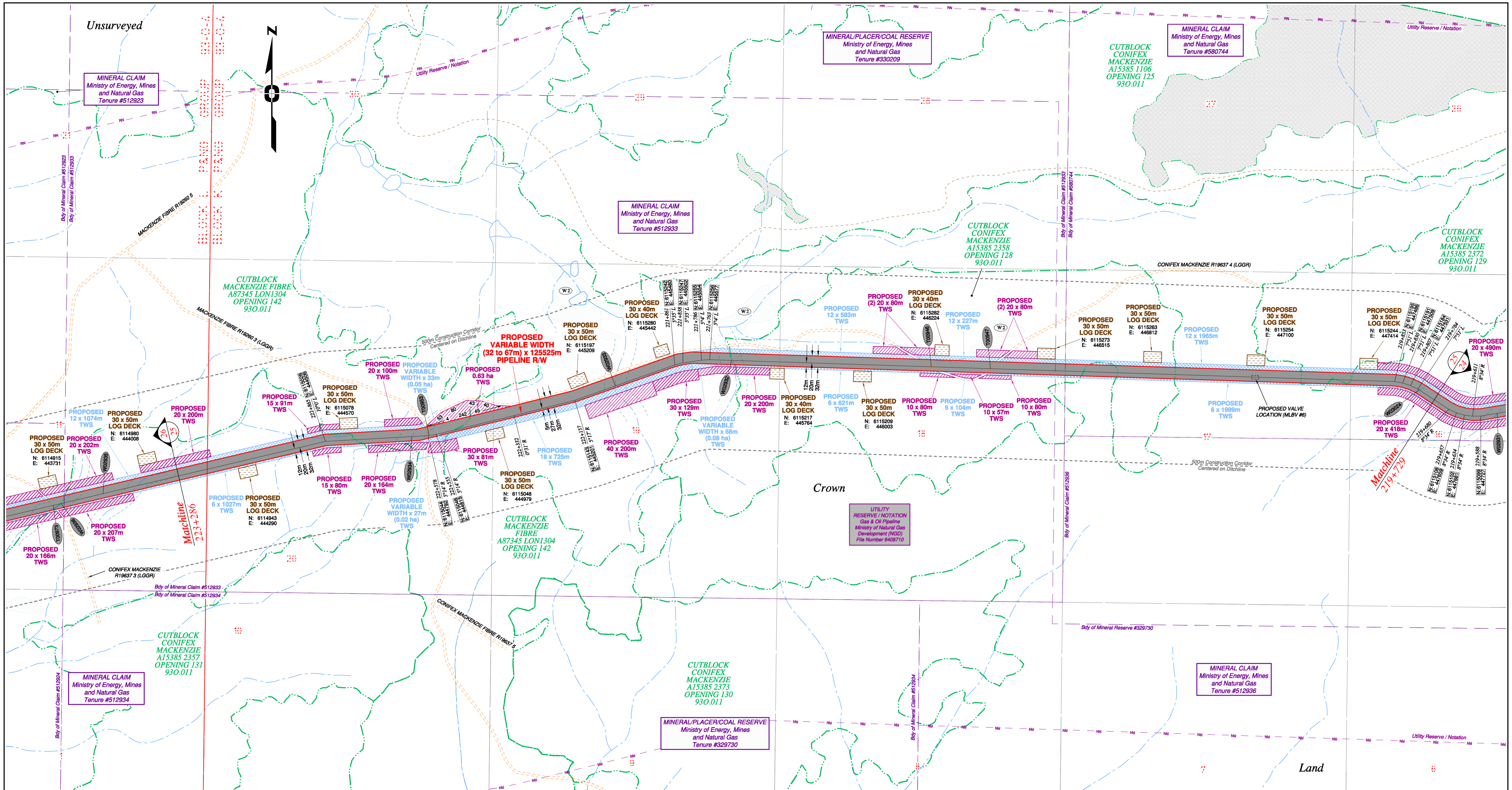
The intended plot size of this plan is 864mm in width by 560mm in height when plotted at a scale of 1: 5000 (use D size sheet)

BCGS: 93N.010, 93O.001/011/012/022/032/033/034/035/045/055/056

FOCUS
Focus Surveys (BC) Limited Partnership
10715 - 100th Avenue Fort St. John BC
V1J 1Z3 250.757.0300 www.focus.ca

FOCUS: 130275CP02R1
AFC: 500948
TCPL: 004776-09-ML-03-054
ePASS: 10048782

Sheet 24 of 32
REV. 1

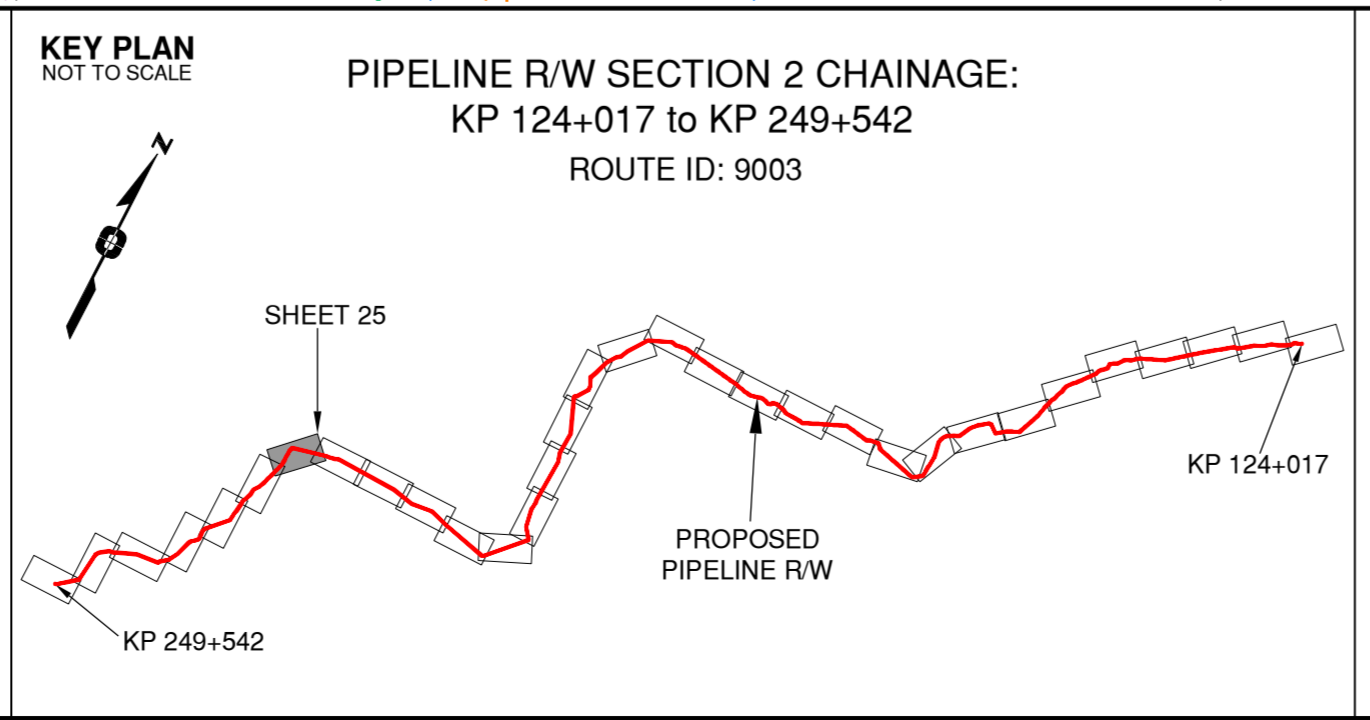


Rev	Revision Description	Date(Y/M/D)	By
0	Original Plan Prepared	2014/09/12	DC
1	Construction Plan Based on Rev.0 (2014/09/12) Except for New Construction Corridor; Shape, Label, Area Table & ePass	2014/12/31	DC

NOTES:

- Co-ordinates are NAD 83 Grid, UTM Zone 9 and Zone 10. Distances shown are in metres and decimals thereof. Chainages are two-dimensional and are on pipeline ditchline. Pipeline segment length derived from ditchline chainages.
- Fault Lines data has been provided from BGC Engineering Inc. Desktop Study dated December 20, 2013.
- Water crossing information has been provided by Stantec. Wetlands data has been provided by Stantec dated August 29, 2014. Freshwater Atlas wetlands outside of construction corridor have been removed from scenery.
- Cutblock data is confirmed using information from the Government of BC websites for Forest MapView and MapBC.
- This pipeline section is not within the Agricultural Land Reserve.
- Field Survey Completed July 15, 2014
- This plan represents the best information available at the time of survey. Focus Surveys and its employees take no responsibility for the location of any underground conduits, pipes, or other facilities whether shown on or omitted from this plan. All underground installations should be located by the respective authorities prior to construction.

LEGEND	
Proposed Pipeline R/W shown thus:	Fish/Wildlife Reserve bdy shown thus:
Proposed Temp. Workspaces shown thus:	Grazing Tenure bdy shown thus:
Proposed Log Decks & Storage Sites shown thus:	Mineral Claim bdy shown thus:
Right of Way shown thus:	Tree Farm Licence shown thus:
Roads shown thus:	Quarry Reserve bdy shown thus:
Highway shown thus:	Ungulate Winter Range bdy shown thus:
Railway line shown thus:	Visual Land Inventory shown thus:
Seismic line/trail shown thus:	Watershed Reserve bdy shown thus:
Recreation Tenure shown thus:	Wind Tenure bdy shown thus:
Drainages shown thus:	Woodlot bdy shown thus:
Buried cable shown thus:	Fault Line shown thus:
Buried pipe shown thus:	Misc Reserve/Notation bdy shown thus:
Overhead powerline shown thus:	Misc Licence/Permit bdy shown thus:
Riparian Reserve Zone shown thus:	Stantec Wetland / Classification shown thus:
Riparian Management Zone shown thus:	Crossings shown thus:
Forest Cover Reserve shown thus:	Old Growth Management Area shown thus:
Archaeological site shown thus:	Residences shown thus:
Agricultural Land Reserve bdy shown thus:	Coal Tenure bdy shown thus:
Cutblock bdy shown thus:	Fence bdy shown thus:



APPROVED BY _____

PROJECT ENGINEER _____

STATION	DESCRIPTION	NAD 83 UTM ZONE 10	OWNER
W02934	222+623 Trib to Limestone Creek / S4 / RRZ = 0 RMZ = 30	N 6115042 E 444747	ILMB
T00953	222+574 Forestry Road / LGGR / R19260.3	N 6115045 E 444795	Mackenzie Fibre Mgmt. Corp.
W02933	222+037 Trib to Limestone Creek / S4 / RRZ = 0 RMZ = 30	N 6115183 E 445314	ILMB
W02932	221+702 Trib to Limestone Creek / S4 / RRZ = 0 RMZ = 30	N 6115254 E 445638	ILMB
T00946	221+144 Forestry Road / LGGR / R19637.4	N 6115236 E 446195	Conifex Mackenzie Forest Prods. Inc.
T00947	220+979 Forestry Road / LGGR / R19637.4	N 6115231 E 446360	Conifex Mackenzie Forest Prods. Inc.
W03024	219+780 Trib to Nation River / RRZ = 0 RMZ = 0	N 6115172 E 447555	ILMB
No.	STATION DESCRIPTION	NAD 83 UTM ZONE 10	OWNER

TABLE OF CROSSINGS

Prince Rupert Gas Transmission Project

PRINCE RUPERT GAS TRANSMISSION LTD.

PROPOSED VARIABLE WIDTH (32 to 67m) PIPELINE R/W FROM b-89-C, 93-O-10 TO a-18-A, 93-N-1 (SHEET CHAINAGE: 219+729 TO 223+286)

Unsurveyed Crown Land, Peace River District

The intended plot size of this plan is 864mm in width by 560mm in height when plotted at a scale of 1: 5000 (use D size sheet)

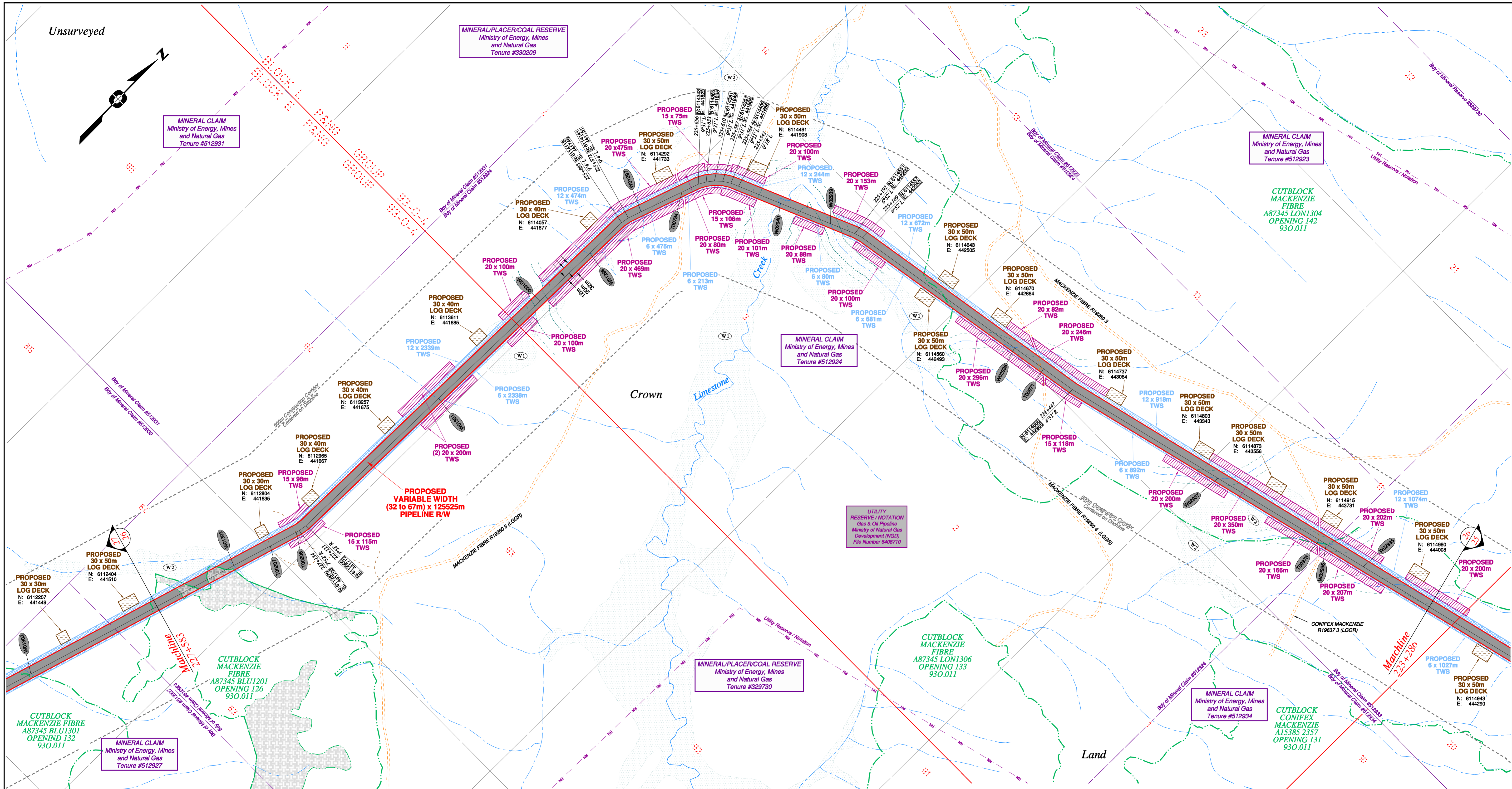
BCGS: 93M.010, 93O.001/011/012/022/032/033/034/035/045/055/056

FOCUS Surveys (BC) Limited Partnership
 10715 - 100th Avenue Fort St. John BC V1J 1Z3 250.757.0300 www.focus.ca

FOCUS: 130275CP02R1
 AFE: 500948
 TCPL: 004776-09-ML-03-055
 ePASS: 10048782

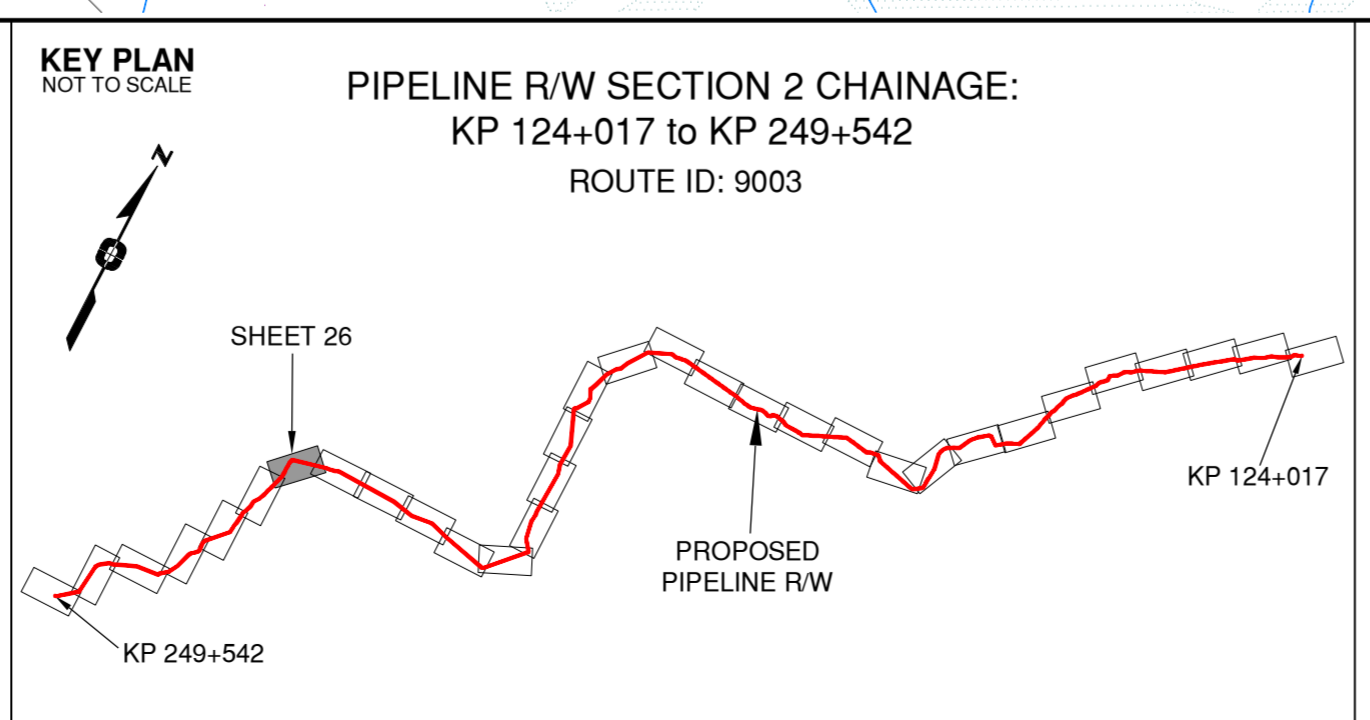
Sheet 25 of 32

REV. 1



Rev	Revision Description	Date(Y/M/D)	By
0	Original Plan Prepared	2014/09/12	DC
1	Construction Plan Based on Rev.0 (2014/09/12) Except for New Construction Corridor, Shape, Label, Area Table & ePASS	2014/12/31	DC

LEGEND	
Proposed Pipeline R/W shown thus: [Symbol]	Fish/Wildlife Reserve bdy shown thus: [Symbol]
Proposed Temp. Workspaces shown thus: TWS / TWS	Grazing Tenure bdy shown thus: [Symbol]
Proposed Log Decks & Storage Sites shown thus: [Symbol]	Mineral Claim bdy shown thus: [Symbol]
Right of Way shown thus: [Symbol]	Tree Farm Licence shown thus: [Symbol]
Roads shown thus: [Symbol]	Quarry Reserve bdy shown thus: [Symbol]
Highway shown thus: [Symbol]	Ungulate Winter Range bdy shown thus: UWR
Railway line shown thus: [Symbol]	Visual Land Inventory shown thus: [Symbol]
Seismic line/trail shown thus: [Symbol]	Watershed Reserve bdy shown thus: [Symbol]
Recreation Tenure shown thus: [Symbol]	Wind Tenure bdy shown thus: [Symbol]
Drainages shown thus: [Symbol]	Woodlot bdy shown thus: [Symbol]
Buried cable shown thus: [Symbol]	Fault Line shown thus: [Symbol]
Overhead powerline shown thus: [Symbol]	Misc Reserve/Notation bdy shown thus: [Symbol]
Overhead powerline shown thus: [Symbol]	Misc Licence/Permit bdy shown thus: [Symbol]
Stantec Wetland / Classification shown thus: [Symbol]	Stantec Reserve Zone shown thus: [Symbol]
Crossings shown thus: [Symbol]	Old Growth Management Area shown thus: [Symbol]
Archaeological site shown thus: [Symbol]	Residences shown thus: [Symbol]
Agricultural Land Reserve bdy shown thus: ALR	Coal Tenure bdy shown thus: [Symbol]
Cutblock bdy shown thus: [Symbol]	Fence bdy shown thus: [Symbol]
Fence bdy shown thus: [Symbol]	



APPROVED BY _____

PROJECT ENGINEER _____

STATION	DESCRIPTION	NAD 83 UTM ZONE 10	OWNER
W01302	227-341	Trib to Rainbow Creek / No visible channel	N 6112682 E 441647 ILMB
W02027	227-225	Trail / Condition Unknown	N 6112792 E 441681 Crown
W02026	227-144	Trail / Condition Unknown	N 6112870 E 441706 Crown
W01301	226-599	Trib to Rainbow Creek / Non-classified drainage / RRZ = 0 RMZ = 0	N 6113413 E 441727 ILMB
W01300	226-208	Trib to Limestone Creek / S3 / RRZ = 20 RMZ = 20	N 6113804 E 441738 ILMB
W01298	226-017	Trib to Rainbow Creek / Non-classified drainage / RRZ = 0 RMZ = 0	N 6113996 E 441743 ILMB
W01297	225-833	Trib to Rainbow Creek / Non-classified drainage / RRZ = 0 RMZ = 0	N 6114177 E 441764 ILMB
W00794	225-706	Forestry Road / LGGR / R19250.3	N 6114296 E 441806 Mackenzie Fibre Mgmt. Corp.
W02340	225-415	Limestone Creek / S1 / RRZ = 50 RMZ = 20	N 6114466 E 442023 ILMB
W02939	225-265	Trib to Limestone Creek / S3 / RRZ = 20 RMZ = 20	N 6114523 E 442162 ILMB
W02938	224-645	Trib to Limestone Creek / S6 / RRZ = 0 RMZ = 20	N 6114636 E 442769 ILMB
W00971	224-546	Forestry Road / LGGR / R19260.4	N 6114651 E 442867 Mackenzie Fibre Mgmt. Corp.
W02937	223-973	Trib to Limestone Creek / S6 / RRZ = 0 RMZ = 20	N 6114775 E 443426 ILMB
W00973	223-644	Forestry Road / LGGR / R19637.3	N 6114850 E 443747 Conflix Mackenzie Forest Prod.
W02936	223-622	Trib to Limestone Creek / S6 / RRZ = 0 RMZ = 20	N 6114855 E 443769 ILMB
W02935	223-501	Trib to Limestone Creek / S6 / RRZ = 0 RMZ = 20	N 6114883 E 443886 ILMB
No.			NAD 83 UTM ZONE 10 OWNER

Prince Rupert Gas Transmission Project

PRINCE RUPERT GAS TRANSMISSION LTD.

PROPOSED VARIABLE WIDTH (32 to 67m) PIPELINE R/W FROM b-89-C, 93-0-10 TO a-18-A, 93-N-1 (SHEET CHAINAGE: 223+286 TO 227+583)

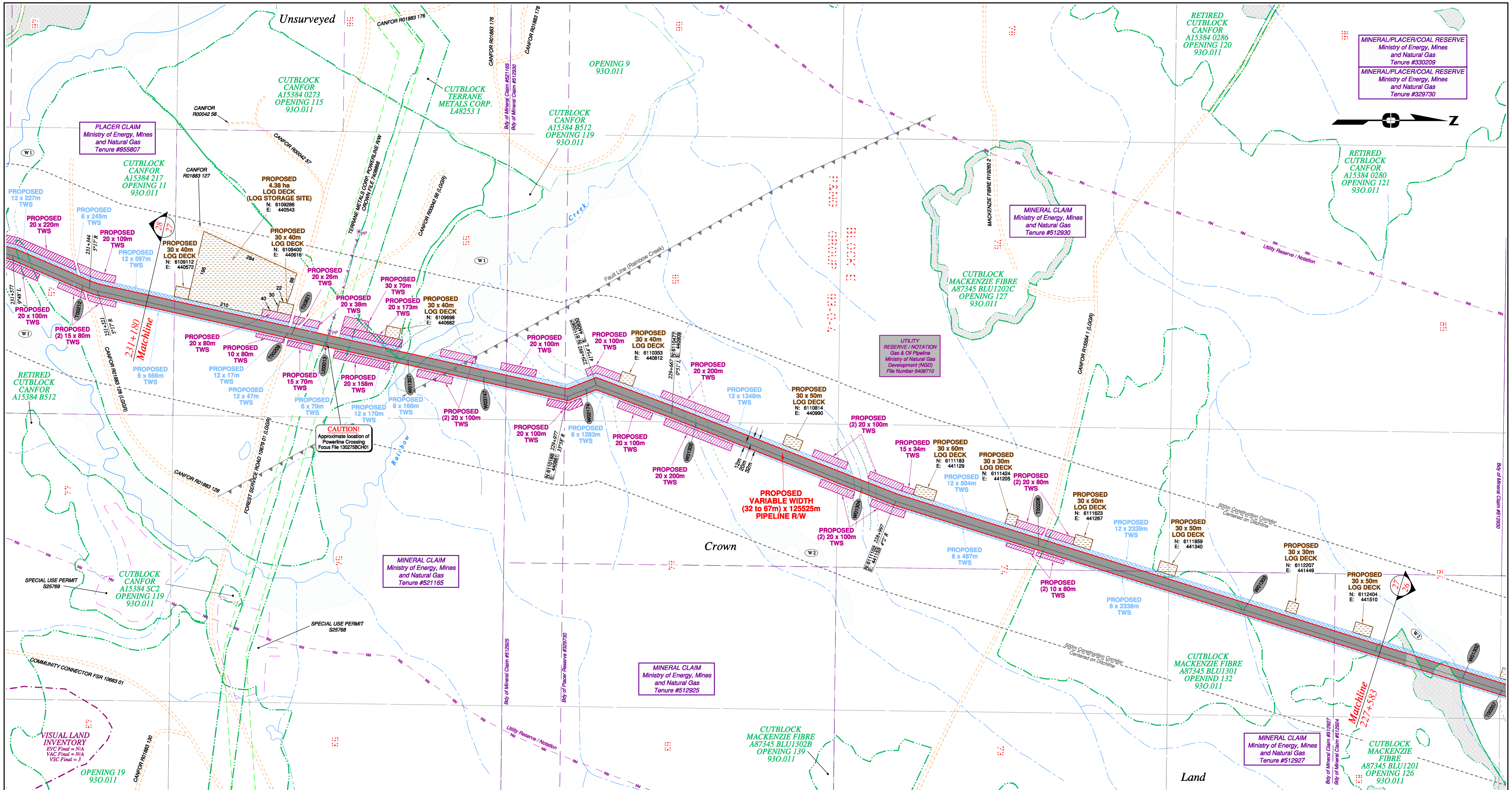
Unsurveyed Crown Land, Peace River District

The intended plot size of this plan is 864mm in width by 560mm in height when plotted at a scale of 1: 5000 (use D size sheet)

BCGS: 93M.010, 93O.001/011/012/022/032/033/034/035/045/055/056

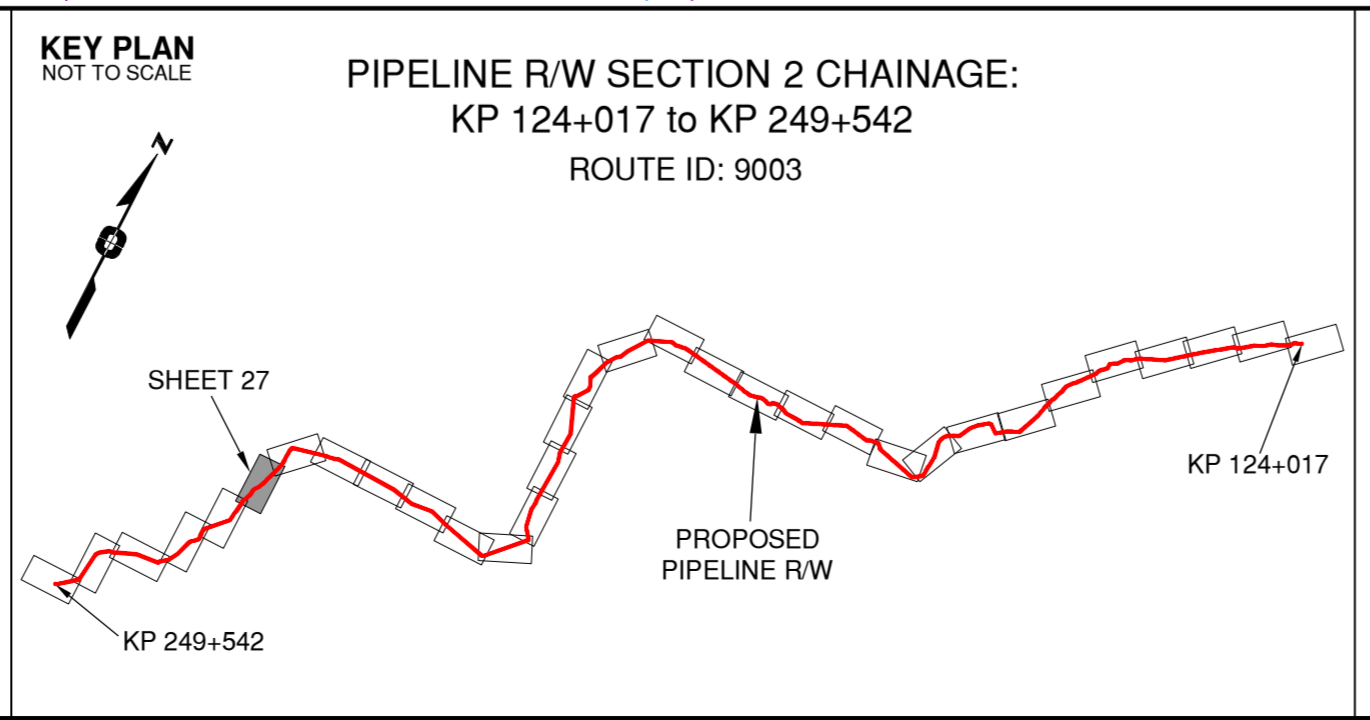
FOCUS Focus Surveys (BC) Limited Partnership 10715 - 100th Avenue Fort St. John BC V1J 1Z3 250.787.0300 www.focus.ca	FOCUS: AFE: TCPL: ePASS:	130275CP02R1 500948 004776-09-ML-03-056 10048782
--	--	---

Sheet 26 of 32 **REV. 1**



Rev	Revision Description	Date(Y/M/D)	By
0	Original Plan Prepared	2014/09/12	DC
1	Construction Plan Based on Rev.0 (2014/09/12) Except for New Construction Corridor, Shape, Label, Area Table & ePass	2014/12/31	DC

LEGEND	
Proposed Pipeline R/W shown thus:	Fish/Wildlife Reserve bdy shown thus:
Proposed Temp. Workspaces shown thus:	Grazing Tenure bdy shown thus:
Proposed Log Decks & Storage Sites shown thus:	Mineral Claim bdy shown thus:
Right of Way shown thus:	Tree Farm Licence shown thus:
Roads shown thus:	Quarry Reserve bdy shown thus:
Highway shown thus:	Ungulate Winter Range bdy shown thus:
Railway line shown thus:	Visual Land Inventory shown thus:
Seismic line/trail shown thus:	Watershed Reserve bdy shown thus:
Recreation Tenure shown thus:	Wind Tenure bdy shown thus:
Drainages shown thus:	Woodlot bdy shown thus:
Buried cable shown thus:	Fault Line shown thus:
Buried pipe shown thus:	Misc Reserve/Notation bdy shown thus:
Overhead powerline shown thus:	Misc Licence/Permit bdy shown thus:
Riparian Reserve Zone shown thus:	Stantec Wetland / Classification shown thus:
Riparian Management Zone shown thus:	Crossings shown thus:
Forest Cover Reserve shown thus:	Old Growth Management Area shown thus:
Archaeological site shown thus:	Residences shown thus:
Agricultural Land Reserve bdy shown thus:	Power Pole shown thus:
Coal Tenure bdy shown thus:	
Cutblock bdy shown thus:	
Fence bdy shown thus:	



APPROVED BY _____

PROJECT ENGINEER _____

STATION	DESCRIPTION	NAD 83 UTM ZONE 10	OWNER
T00209	230+776 Forest Service Road / LGGR FSR 10679 01	N 6109407 E 440686	District Manager Mackenzie
T00621	230+785 Forestry Road / LGGR / R00042 56	N 6109418 E 440689	Canadian Forest Products Ltd.
U00013	230+866 Overhead Powerlines	N 6109515 E 440710	Terrane Metals Corp.
W01307	230+433 Rainbow Creek / S2 / RRZ = 30 RMZ = 20	N 6109742 E 440761	ILMB
W03747	230+217 Trib to Rainbow Creek / Non-classified drainage / RRZ = 0 RMZ = 0	N 6109953 E 440908	ILMB
W02174	229+922 Trib to Rainbow Creek / S4 / RRZ = 0 RMZ = 30	N 6110239 E 440941	ILMB
W01305	229+594 Trib to Rainbow Creek / S4 / RRZ = 30	N 6110545 E 440935	ILMB
W01304	229+098 Trib to Rainbow Creek / S3 / RRZ = 20 RMZ = 20	N 6111007 E 441116	ILMB
T00208	228+579 Forestry Road / LGGR / R15554 1	N 6111500 E 441278	Canadian Forest Products Ltd.
W01303	227+980 Trib to Rainbow Creek / No visible channel	N 6112072 E 441456	ILMB
No.	STATION DESCRIPTION	NAD 83 UTM ZONE 10	OWNER

Prince Rupert Gas Transmission Project

PRINCE RUPERT GAS TRANSMISSION LTD.

PROPOSED VARIABLE WIDTH (32 to 67m) PIPELINE R/W FROM b-89-C, 93-O-10 TO a-18-A, 93-N-1 (SHEET CHAINAGE: 227+583 TO 231+180)

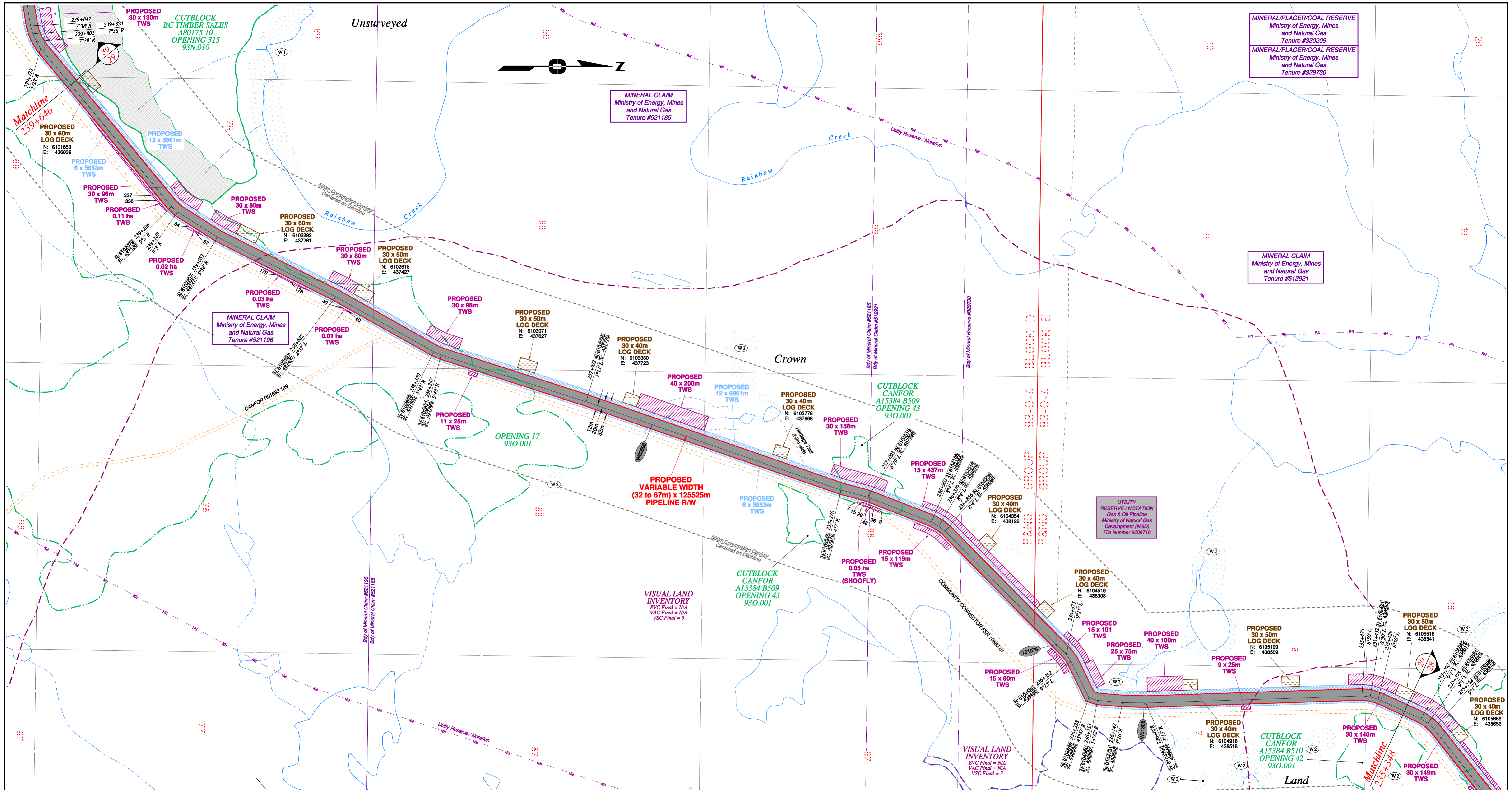
Unsurveyed Crown Land, Peace River District

BCGS: 93N.010, 93O.011/011/012/022/032/033/034/035/045/055/056

FOCUS Focus Surveys (BC) Limited Partnership
10715 - 100th Avenue Fort St. John BC V1J 1Z3 250.787.0300 www.focus.ca

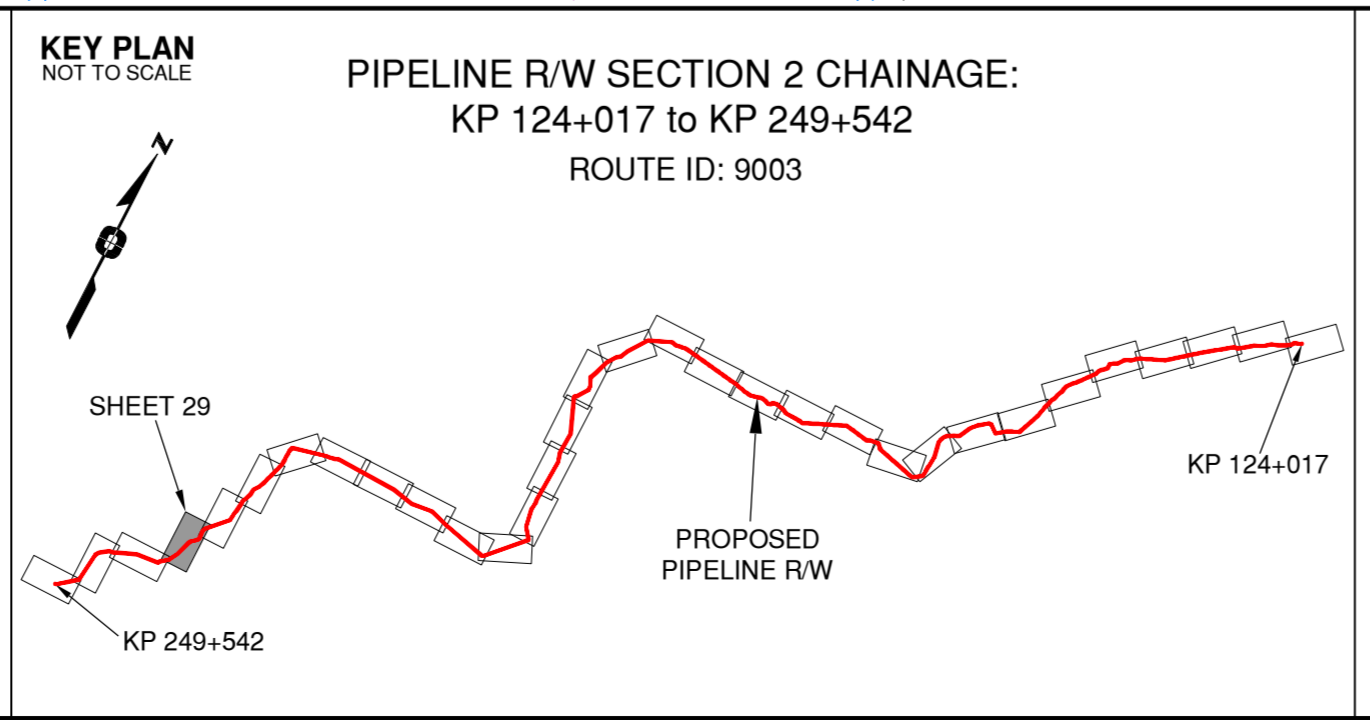
FOCUS: 130275CP02R1
AFCE: 500948
TCPL: 004776-09-ML-03-057
ePASS: 10048782

Sheet 27 of 32 REV. 1



Rev	Revision Description	Date(Y/M/D)	By
0	Original Plan Prepared	2014/09/12	DC
1	Construction Plan Based on Rev.0 (2014/09/12) Except for New Construction Corridor; Shape, Label, Area Table & ePass	2014/12/31	DC

LEGEND	
Proposed Pipeline R/W shown thus: [Symbol]	Fish/Wildlife Reserve bdy shown thus: [Symbol]
Proposed Temp. Workspaces shown thus: TWS / TWS	Grazing Tenure bdy shown thus: [Symbol]
Proposed Log Decks & Storage Sites shown thus: [Symbol]	Mineral Claim bdy shown thus: [Symbol]
Right of Way shown thus: [Symbol]	Tree Farm Licence shown thus: [Symbol]
Roads shown thus: [Symbol]	Quarry Reserve bdy shown thus: [Symbol]
Highway shown thus: [Symbol]	Ungulate Winter Range bdy shown thus: UWR
Railway line shown thus: [Symbol]	Visual Land Inventory shown thus: [Symbol]
Seismic line/trail shown thus: [Symbol]	Watershed Reserve bdy shown thus: [Symbol]
Recreation Tenure shown thus: [Symbol]	Wind Tenure bdy shown thus: [Symbol]
Drainages shown thus: [Symbol]	Woodlot bdy shown thus: [Symbol]
Buried cable shown thus: [Symbol]	Fault Line shown thus: [Symbol]
Buried pipe shown thus: [Symbol]	Misc Reserve/Notation bdy shown thus: [Symbol]
Overhead powerline shown thus: [Symbol]	Misc Licence/Permit bdy shown thus: [Symbol]
Riparian Reserve Zone shown thus: [Symbol]	Stantec Wetland / Classification shown thus: [Symbol]
Riparian Management Zone shown thus: [Symbol]	Crossings shown thus: [Symbol]
Forest Cover Reserve shown thus: [Symbol]	Old Growth Management Area shown thus: [Symbol]
Archaeological site shown thus: [Symbol]	Residences shown thus: [Symbol]
Agricultural Land Reserve bdy shown thus: [Symbol]	Power Pole shown thus: [Symbol]
Coal Tenure bdy shown thus: [Symbol]	
Cutblock bdy shown thus: [Symbol]	
Fence bdy shown thus: [Symbol]	



APPROVED BY _____

PROJECT ENGINEER _____

No.	STATION	DESCRIPTION	OWNER
W02696	237+726	Trib to Rainbow Creek / S4 / RRZ = 0 RMZ = 30	N 6103419 E 437794 ILMB
T01076	236+413	Trail / Condition Unknown	N 6104546 E 438406 Crown
W01308	236+082	Trib to Rainbow Creek / Non-classified drainage / RRZ = 0	N 6104791 E 438569 ILMB
			NAD 83 UTM ZONE 10

Prince Rupert Gas Transmission Project

TransCanada
In business to deliver

PRINCE RUPERT GAS TRANSMISSION LTD.

PROPOSED VARIABLE WIDTH (32 to 67m) PIPELINE R/W FROM b-89-C, 93-O-10 TO a-18-A, 93-N-1 (SHEET CHAINAGE: 235+348 TO 239+646)

Unsurveyed Crown Land, Peace River District

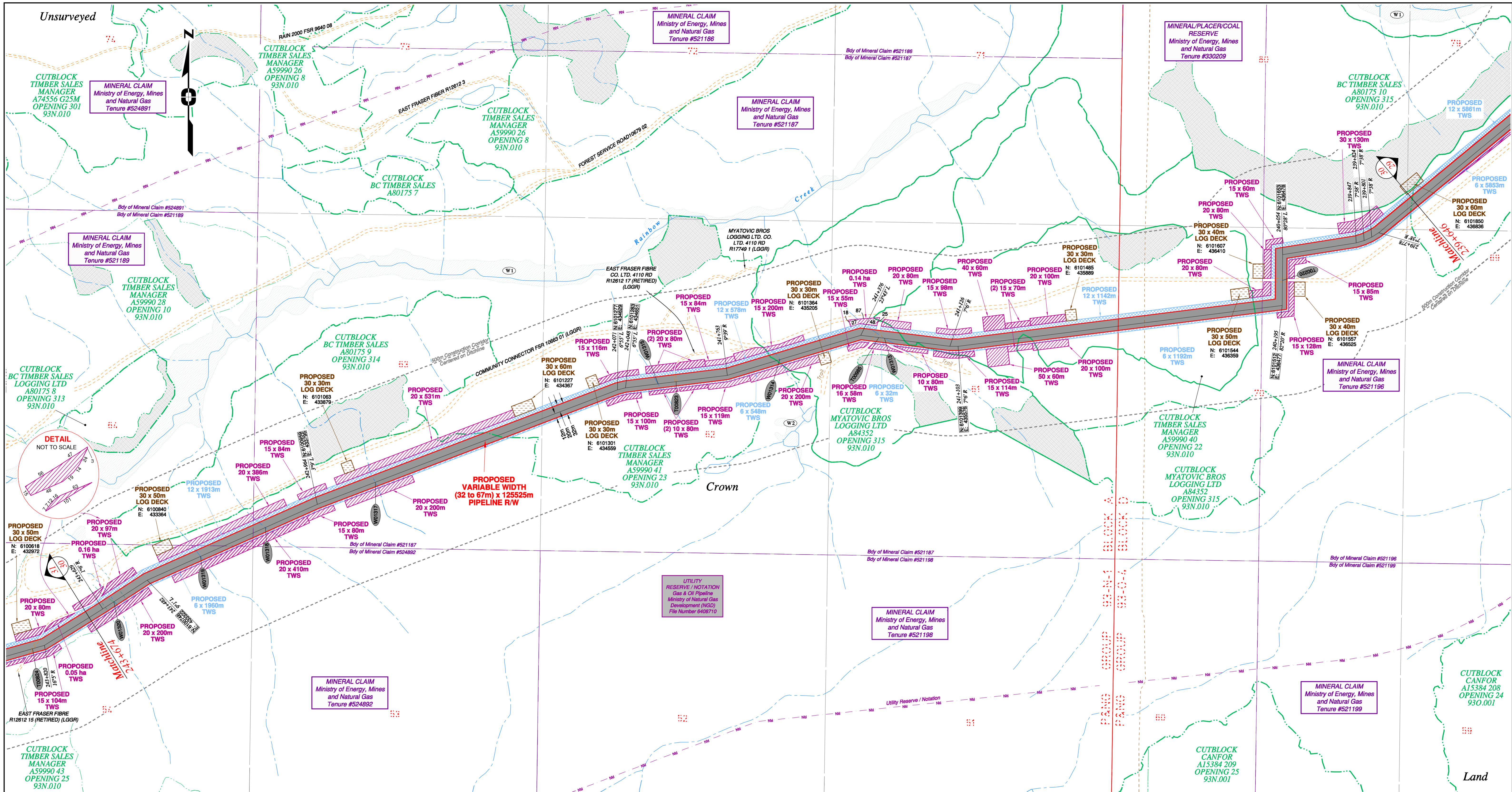
The intended plot size of this plan is 864mm in width by 560mm in height when plotted at a scale of 1: 5000 (use D size sheet)

BCGS: 93N.010, 93O.001/011/012/022/032/033/034/035/045/055/056

Sheet 29 of 32

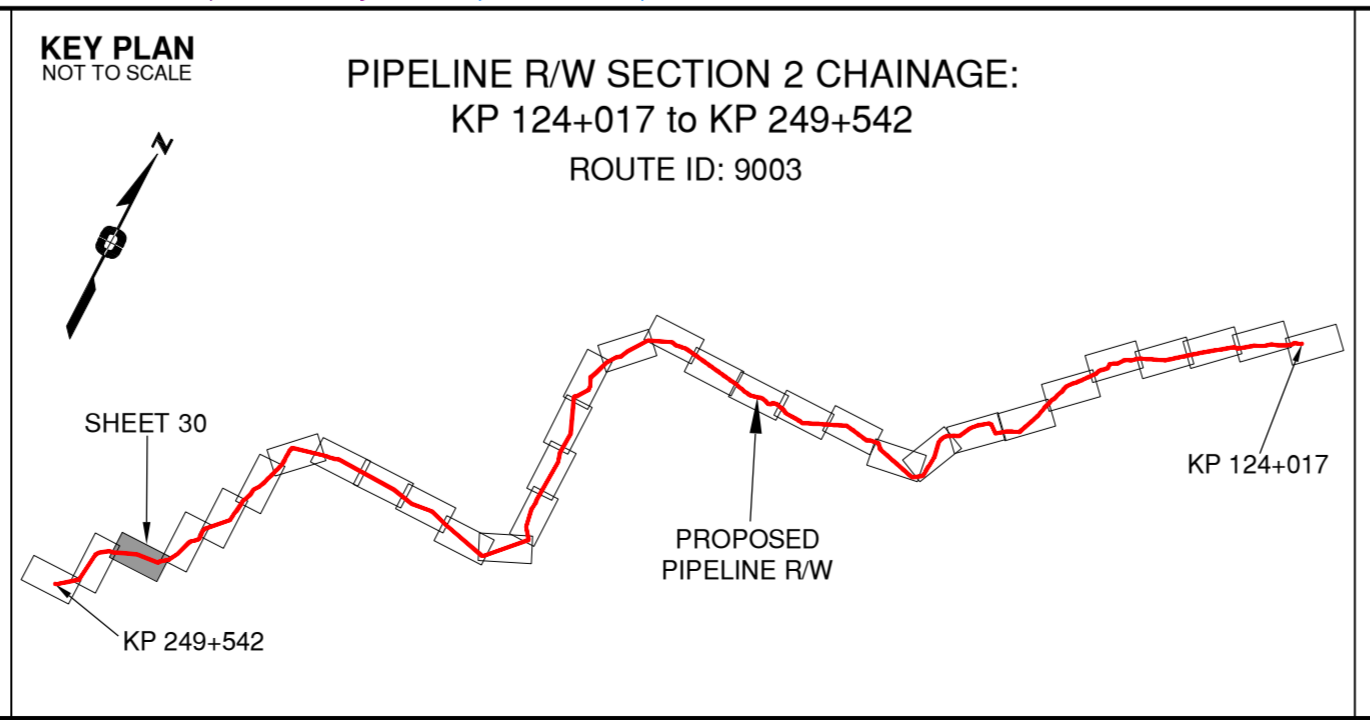
FOCUS Focus Surveys (BC) Limited Partnership 10715 - 100th Avenue, Fort St. John, BC V1J 1Z3, 250.757.0300, www.focus.ca	FOCUS: 130275CP02R1 A/E: 500948 TCPL: 004776-09-ML-03-059 ePASS: 10048782	REV. 1
--	--	------------------

TABLE OF CROSSINGS



Rev	Revision Description	Date(Y/M/D)	By
0	Original Plan Prepared	2014/09/12	DC
1	Construction Plan Based on Rev.0 (2014/09/12) Except for New Construction Corridor: Shape, Label, Area Table & ePASS	2014/12/31	DC

LEGEND	
Proposed Pipeline R/W shown thus: [Symbol]	Fish/Wildlife Reserve bdy shown thus: [Symbol]
Proposed Temp. Works shown thus: TWS / TWS	Grazing Tenure bdy shown thus: [Symbol]
Proposed Log Decks & Storage Sites shown thus: [Symbol]	Mineral Claim bdy shown thus: [Symbol]
Right of Way shown thus: [Symbol]	Tree Farm Licence shown thus: [Symbol]
Roads shown thus: [Symbol]	Quarry Reserve bdy shown thus: [Symbol]
Highway shown thus: [Symbol]	Ungulate Winter Range bdy shown thus: UWR
Railway line shown thus: [Symbol]	Visual Land Inventory shown thus: [Symbol]
Seismic line/trail shown thus: [Symbol]	Watershed Reserve bdy shown thus: [Symbol]
Recreation Tenure shown thus: [Symbol]	Wind Tenure bdy shown thus: [Symbol]
Drainages shown thus: [Symbol]	Woodlot bdy shown thus: [Symbol]
Buried cable shown thus: [Symbol]	Fault Line shown thus: [Symbol]
Buried pipe shown thus: [Symbol]	Misc Reserve/Notation bdy shown thus: [Symbol]
Overhead powerline shown thus: [Symbol]	Misc Licence/Permit bdy shown thus: [Symbol]
Forest Cover Reserve shown thus: [Symbol]	Stantec Wetland / Classification shown thus: [Symbol]
Riparian Reserve Zone shown thus: [Symbol]	Crossings shown thus: [Symbol]
Forest Cover Reserve shown thus: [Symbol]	Old Growth Management Area shown thus: [Symbol]
Archaeological site shown thus: [Symbol]	Residences shown thus: [Symbol]
Agricultural Land Reserve bdy shown thus: ALR	Power Pole shown thus: [Symbol]
Coal Tenure bdy shown thus: [Symbol]	
Cutblock data bdy shown thus: [Symbol]	
Fence bdy shown thus: [Symbol]	



APPROVED BY _____

PROJECT ENGINEER _____

PIPELINE R/W SECTION 2 CHAINAGE:
KP 124+017 to KP 249+542
ROUTE ID: 9003

No.	STATION	DESCRIPTION	NAD 83 UTM ZONE 10	OWNER
W01320	243+592	Trib to Rainbow Creek / Non-classified drainage / RRZ=0 RMZ= 30	N 6100688 E 433229	ILMB
W01319	243+320	Trib to Rainbow Creek / Non-classified drainage / RRZ=0 RMZ= 0	N 6100614 E 433470	ILMB
W01318	243+122	Trib to Rainbow Creek / Non-classified drainage / RRZ=0 RMZ= 0	N 6100895 E 433659	ILMB
W01317	242+791	Trib to Rainbow Creek / Non-classified drainage / RRZ=0 RMZ= 0	N 6101021 E 433956	ILMB
W01315	241+957	Trib to Rainbow Creek / No visible channel	N 6101294 E 434742	ILMB
W00823	241+906	Forestry Road / LGGR / R12612 17 (Retired)	N 6101300 E 434792	Crown
W01314	241+610	Trib to Rainbow Creek / Non-classified drainage / RRZ=0 RMZ= 0	N 6101362 E 435080	ILMB
W00985	241+325	Trail / Condition Unknown	N 6101423 E 435355	Crown
W01313	241+309	Trib to Rainbow Creek / No visible channel	N 6101421 E 435371	ILMB
W02020	240+125	Forest Service Rd. (Community Connector) / LGGR / FSR 10663 01	N 6101582 E 436477	District Manager Mackenzie

Prince Rupert Gas Transmission Project **TransCanada**
In business to deliver

PRINCE RUPERT GAS TRANSMISSION LTD.

PROPOSED VARIABLE WIDTH (32 to 67m) PIPELINE R/W FROM b-89-C, 93-0-10 TO a-18-A, 93-N-1 (SHEET CHAINAGE: 239+646 TO 243+674)

Unsurveyed Crown Land, Peace River District

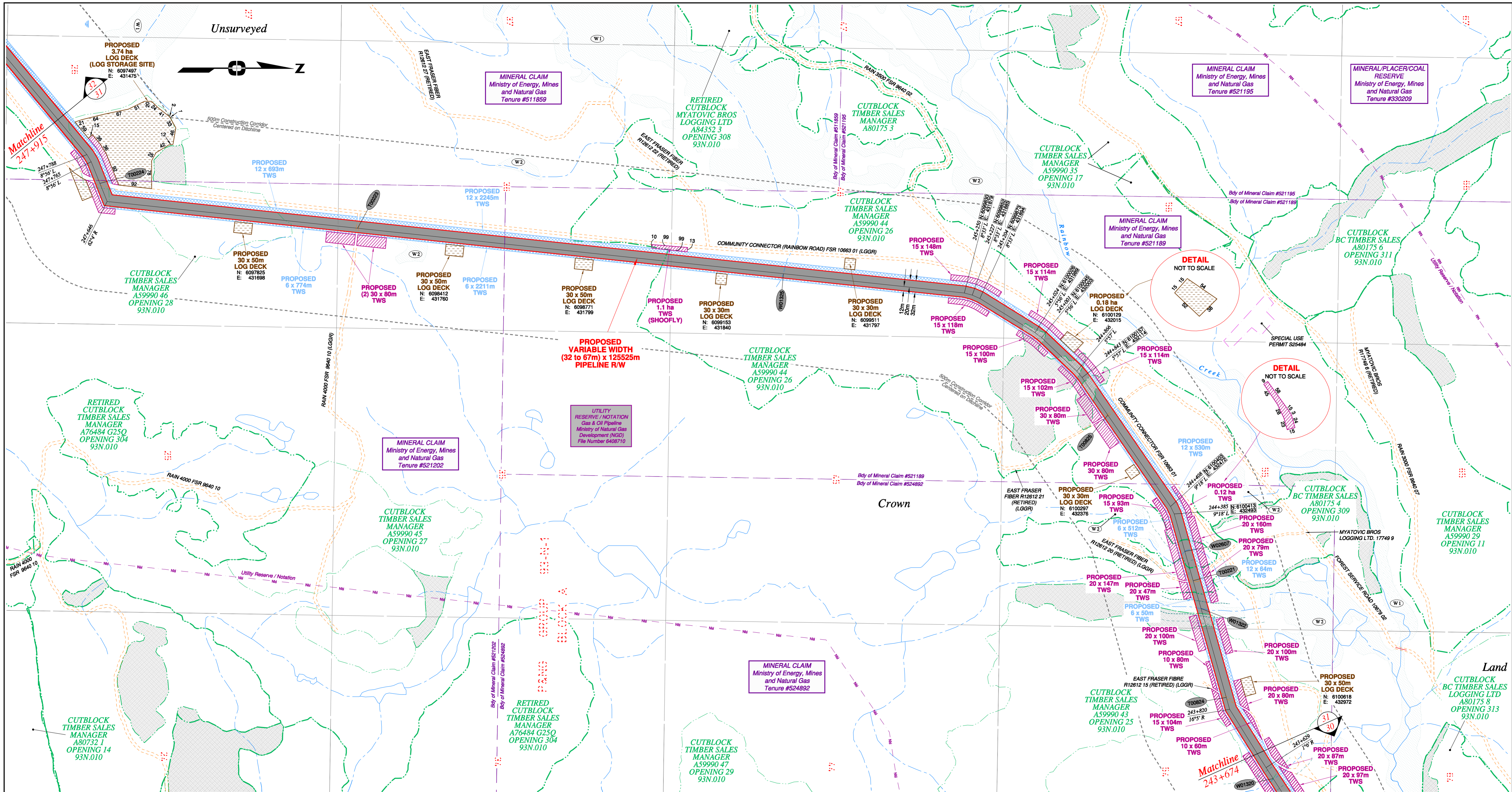
The intended plot size of this plan is 864mm in width by 560mm in height when plotted at a scale of 1: 5000 (use D size sheet)

BCGS: 93N.010, 93O.001/011/012/022/032/033/034/035/045/055/056

FOCUS Focus Surveys (BC) Limited Partnership
10715 - 100th Avenue Fort St. John BC V1J 1Z3 250.757.0300 www.focus.ca

FOCUS: 130275CP02R1
AFE: 500948
TCP/L: 004776-09-ML-03-060
ePASS: 10048782

Sheet 30 of 32 REV. 1



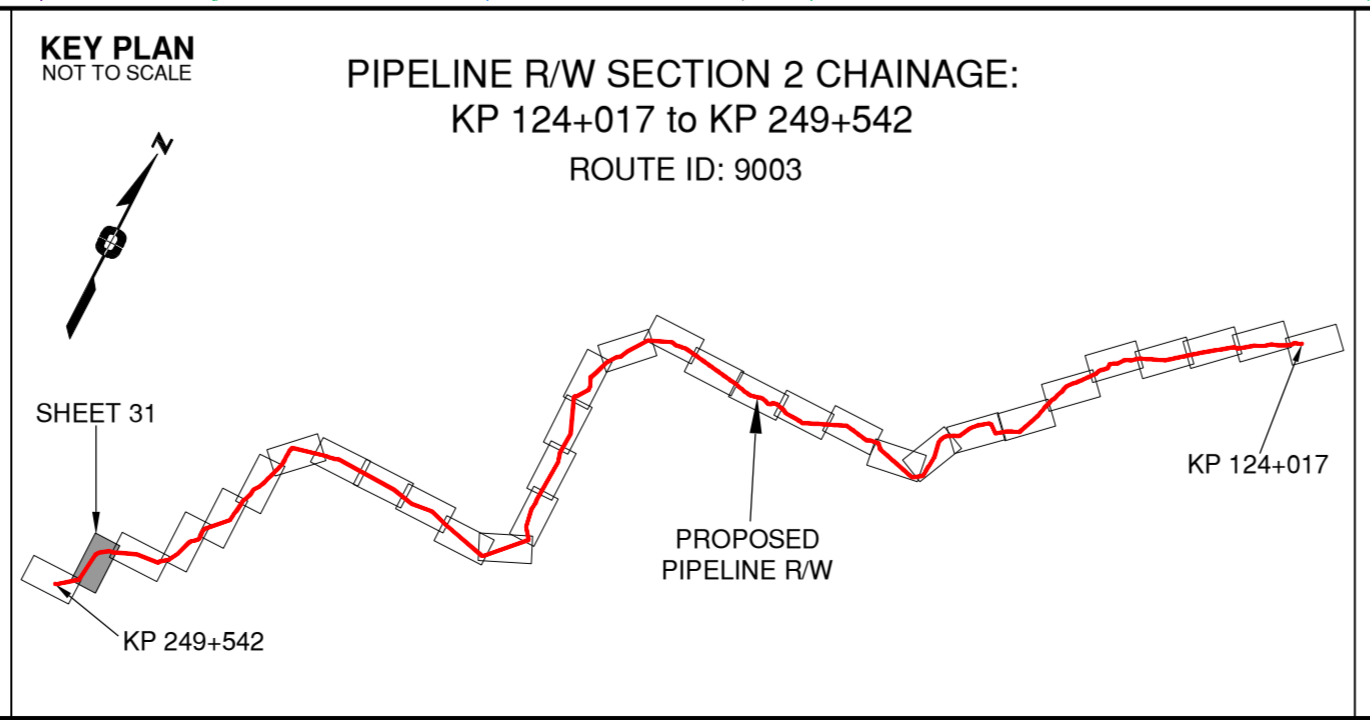
Rev	Revision Description	Date(Y/M/D)	By
0	Original Plan Prepared	2014/09/12	DC
1	Construction Plan Based on Rev.0 (2014/09/12) Except for New Construction Corridor: Shape, Label, Area Table & ePass	2014/12/31	DC

NOTES:

- Co-ordinates are NAD 83 Grid, UTM Zone 9 and Zone 10. Distances shown are in metres and decimals thereof. Chainages are two-dimensional and are on pipeline ditchline. Pipeline segment length derived from ditchline chainages.
- Fault Lines data has been provided from BGC Engineering Inc. Desktop Study dated December 20, 2013.
- Water crossing information has been provided by Stantec. Wetlands data has been provided by Stantec dated August 29, 2014. Freshwater Atlas wetlands outside of construction corridor have been removed from scenery.
- Cutblock data is confirmed using information from the Government of BC websites for Forest MapView and MapBC.
- This pipeline section is not within the Agricultural Land Reserve.
- Field Survey Completed July 15, 2014.
- This plan represents the best information available at the time of survey. Focus Surveys and its employees take no responsibility for the location of any underground conduits, pipes, or other facilities whether shown on or omitted from this plan. All underground installations should be located by the respective authorities prior to construction.

LEGEND

Proposed Pipeline R/W shown thus:	Fish/Wildlife Reserve bdy shown thus:
Proposed Temp. Workspaces shown thus:	Grazing Tenure bdy shown thus:
Proposed Log Decks & Storage Sites shown thus:	Mineral Claim bdy shown thus:
Right of Way shown thus:	Tree Farm Licence shown thus:
Roads shown thus:	Quarry Reserve bdy shown thus:
Highway shown thus:	Ungulate Winter Range bdy shown thus:
Railway line shown thus:	Visual Land Inventory shown thus:
Seismic line/trail shown thus:	Watershed Reserve bdy shown thus:
Wind Tenure bdy shown thus:	Recreation Tenure bdy shown thus:
Drainages shown thus:	Fault Line shown thus:
Buried cable shown thus:	Misc Reserve/Notation bdy shown thus:
Overhead powerline shown thus:	Stantec Wetland / Classification shown thus:
Riparian Reserve Zone shown thus:	Crossings shown thus:
Riparian Management Zone shown thus:	Forest Cover Reserve shown thus:
Archaeological site shown thus:	Coal Tenure bdy shown thus:
Agricultural Land Reserve bdy shown thus:	Cutblock bdy shown thus:
Fence bdy shown thus:	Power Pole shown thus:



APPROVED BY _____

PROJECT ENGINEER _____

TABLE OF CROSSINGS

No.	STATION	DESCRIPTION	NAD 83 UTM ZONE 10	OWNER
T00224	247+700	Forestry Service Road 10663 01 Community Connector / LGGR	N 6097427 E 431574	Timber Sales Manager
T00223	246+946	Forestry Service Road / LGGR / FSR 9640 10	N 6098143 E 431699	Timber Sales Manager
W01325	245+756	Trib to Rainbow Creek / No visible channel	N 6099327 E 431825	ILMB
W00825	244+715	Forestry Road / LGGR / R12612 21 (Retired)	N 6100229 E 432218	Crown
W02607	244+276	Trib to Rainbow Creek / S4 / RRZ = 0 RMZ = 30	N 6100443 E 432997	ILMB
T00221	244+191	Forestry Road / LGGR / R12612 20 (Retired)	N 6100466 E 432679	Crown
W01322	244+111	Trib to Rainbow Creek / S3 / RRZ = 20 RMZ = 20	N 6100488 E 432756	ILMB
T00824	243+854	Forestry Road / LGGR / R12612 15 (Retired)	N 6100558 E 433003	Crown
No.	STATION	DESCRIPTION	NAD 83 UTM ZONE 10	OWNER

Prince Rupert Gas Transmission Project

TransCanada
In business to deliver

PRINCE RUPERT GAS TRANSMISSION LTD.

PROPOSED VARIABLE WIDTH (32 to 67m) PIPELINE R/W FROM b-89-C, 93-O-10 TO a-18-A, 93-N-1 (SHEET CHAINAGE: 243+674 TO 247+915)

Unsurveyed Crown Land, Peace River District

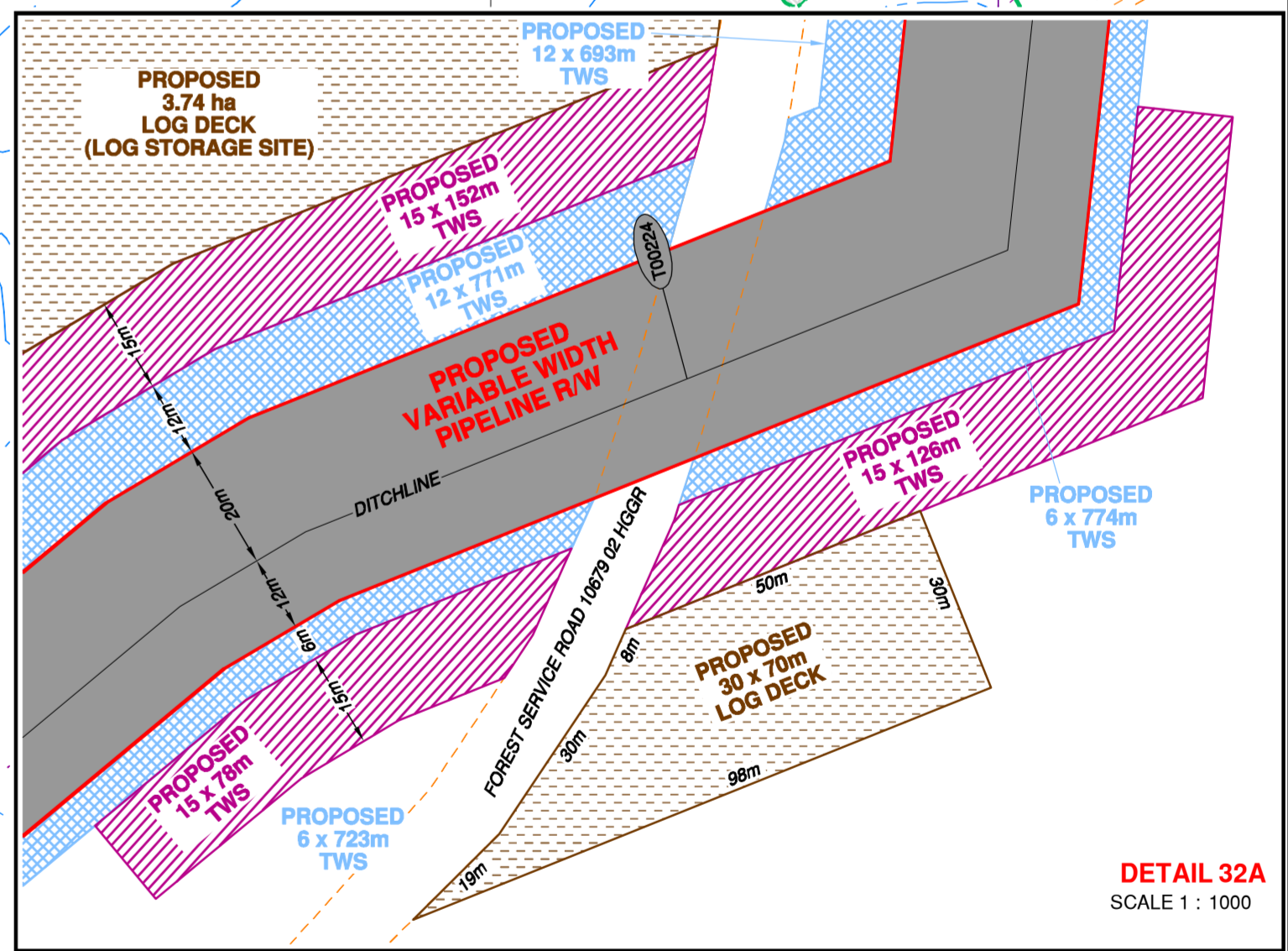
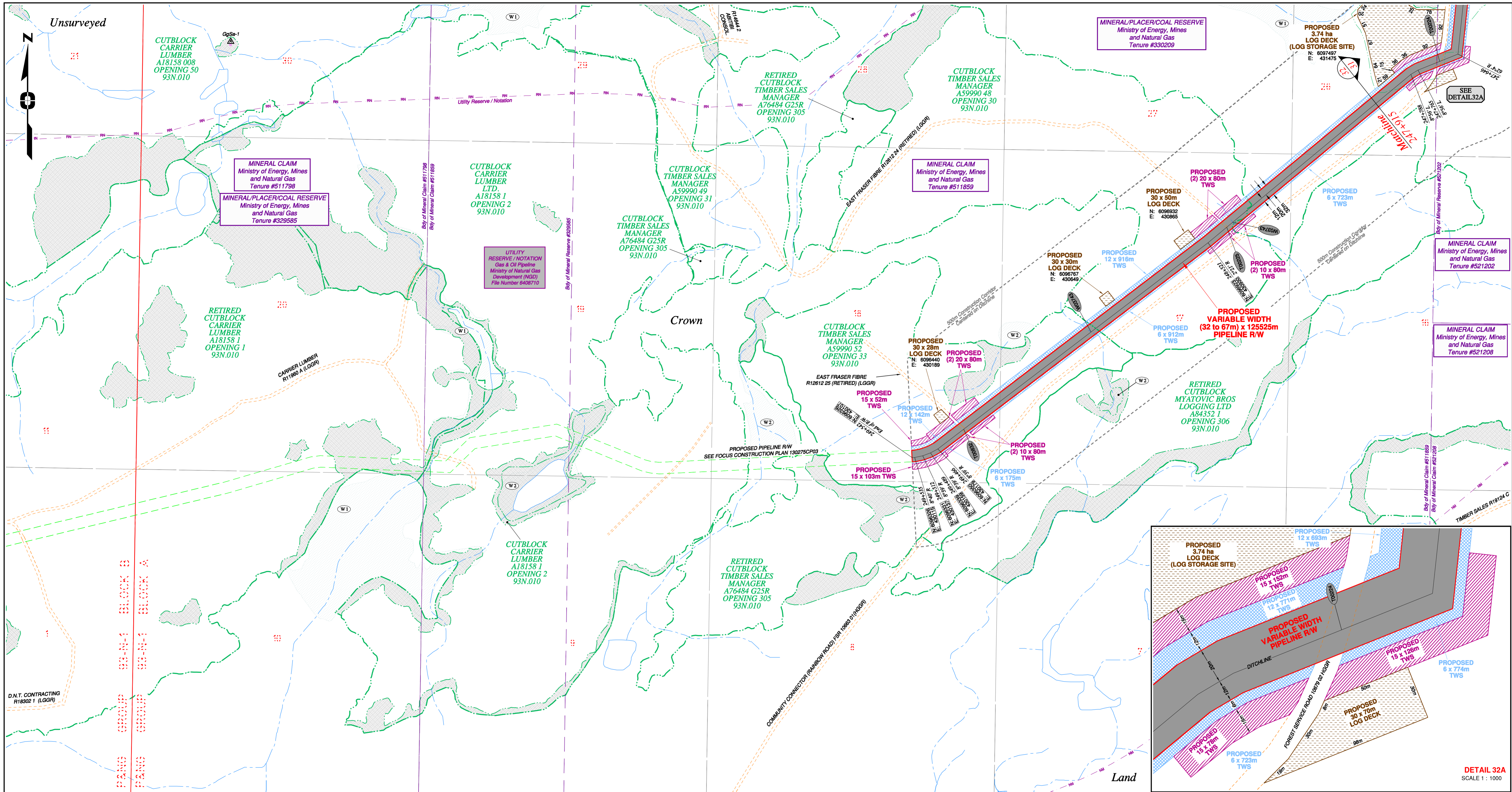
The intended plot size of this plan is 864mm in width by 560mm in height when plotted at a scale of 1: 5000 (use D size sheet)

BCGS: 93N.010, 93O.001/011/012/022/032/033/034/035/045/055/056

FOCUS
Focus Surveys (BC) Limited Partnership
10715 - 100th Avenue Fort St. John BC V1J 1Z3 250.757.0300 www.focus.ca

FOCUS: 130275CP02R1
AFL: 500948
TCPE: 004776-09-ML-03-061
ePASS: 10048782

Sheet 31 of 32
REV. 1



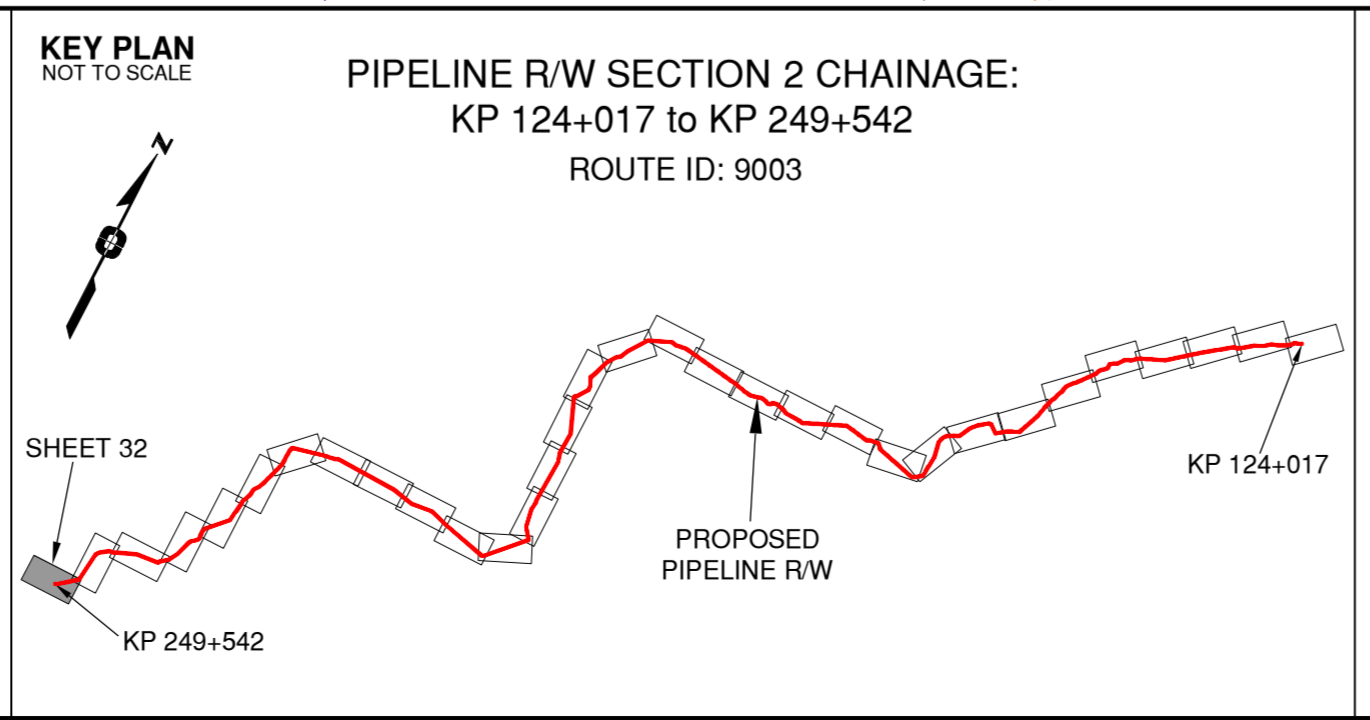
Rev	Revision Description	Date(Y/M/D)	By
0	Original Plan Prepared	2014/09/12	DC
1	Construction Plan Based on Rev.0 (2014/09/12) Except for New Construction Corridor: Shape, Label, Area Table & ePass	2014/12/31	DC

NOTES:

- Co-ordinates are NAD 83 Grid, UTM Zone 9 and Zone 10. Distances shown are in metres and decimals thereof. Chainages are two-dimensional and are on pipeline ditchline. Pipeline segment length derived from ditchline chainages.
- Fault Lines data has been provided from BGC Engineering Inc. Desktop Study dated December 20, 2013.
- Water crossing information has been provided by Stantec. Wetlands data has been provided by Stantec dated August 29, 2014. Freshwater Atlas wetlands outside of construction corridor have been removed from scenery.
- Cutblock data is confirmed using information from the Government of BC websites for Forest MapView and MapBC.
- This pipeline section is not within the Agricultural Land Reserve.
- Field Survey Completed July 15, 2014
- This plan represents the best information available at the time of survey. Focus Surveys and its employees take no responsibility for the location of any underground conduits, pipes, or other facilities whether shown on or omitted from this plan. All underground installations should be located by the respective authorities prior to construction.

LEGEND

Proposed Pipeline R/W shown thus:	Fish/Wildlife Reserve bdy shown thus:
Proposed Temp. Workspaces shown thus:	Grazing Tenure bdy shown thus:
Proposed Log Decks & Storage Sites shown thus:	Mineral Claim bdy shown thus:
Right of Way shown thus:	Tree Farm Licence shown thus:
Roads shown thus:	Quarry Reserve bdy shown thus:
Highway shown thus:	Ungulate Winter Range bdy shown thus:
Railway line shown thus:	Visual Land Inventory shown thus:
Seismic line/trail shown thus:	Watershed Reserve bdy shown thus:
Recreation Tenure shown thus:	Wind Tenure bdy shown thus:
Drainages shown thus:	Woodlot bdy shown thus:
Buried cable shown thus:	Fault Line shown thus:
Buried pipe shown thus:	Misc Reserve/Notation bdy shown thus:
Overhead powerline shown thus:	Misc Licence/Permit bdy shown thus:
Riparian Reserve Zone shown thus:	Stantec Wetland / Classification shown thus:
Riparian Management Zone shown thus:	Crossings shown thus:
Forest Cover Reserve shown thus:	Old Growth Management Area shown thus:
Archaeological site shown thus:	Residences shown thus:
Agricultural Land Reserve bdy shown thus:	Power Pole shown thus:
Coal Tenure bdy shown thus:	
Cutblock bdy shown thus:	
Fence bdy shown thus:	



APPROVED BY _____

PROJECT ENGINEER _____

TABLE OF CROSSINGS

No.	STATION	DESCRIPTION	NAD 83 UTM ZONE 10	OWNER
T00832	249+375	Forestry Road / LGGR / R12612 25 (Retired)	N 6096405 E 430251	Crown
W01327	248+930	Trib to Cripple Creek / No visible channel	N 6096675 E 430605	ILMB
T00225	248+453	Forestry Road / LGGR / R12612 24 (Retired)	N 6096966 E 430982	Crown
W03743	248+431	Trib to Cripple Creek / No visible channel	N 6096979 E 430999	ILMB
No.	STATION	DESCRIPTION	NAD 83 UTM ZONE 10	OWNER

Prince Rupert Gas Transmission Project
Gas Transmission Project

TransCanada
In business to deliver

PRINCE RUPERT GAS TRANSMISSION LTD.

PROPOSED VARIABLE WIDTH (32 to 67m) PIPELINE R/W
FROM b-89-C, 93-O-10 TO a-18-A, 93-N-1
(SHEET CHAINAGE: 247+915 TO 249+542)
Unsurveyed Crown Land, Peace River District

The intended plot size of this plan is 864mm in width by 560mm in height when plotted at a scale of 1: 5000 (use D size sheet)

BCGS: 93N.010, 93O.001/011/012/022/032/033/034/035/045/055/056

FOCUS
Focus Surveys (BC) Limited Partnership
10715 - 100th Avenue Fort St. John BC
V1J 1Z3 250.757.0300 www.focus.ca

FOCUS: 130275CP02R1
AFC: 500948
TCPL: 004776-09-ML-03-062
ePASS: 10048782

Sheet 32 of 32
REV. 1