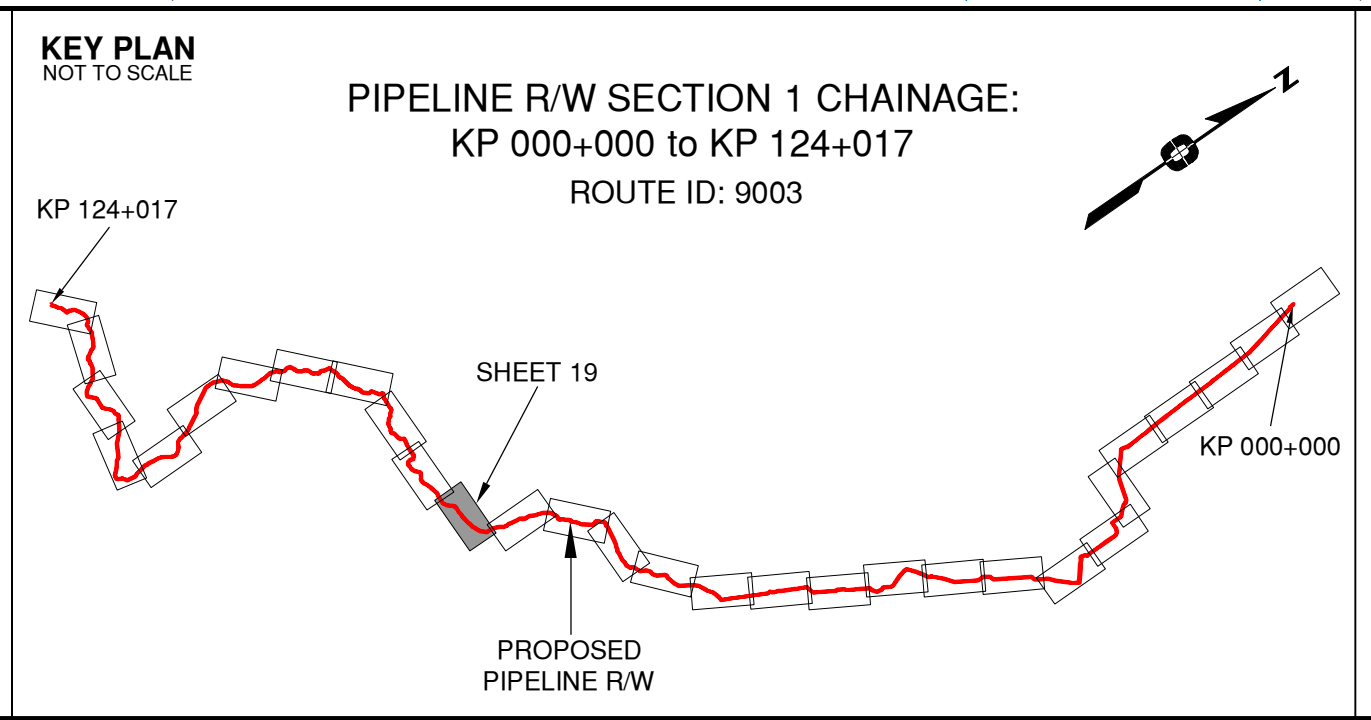


Rev	Revision Description	Date(Y/M/D)	By
0	Original Plan Prepared	2014/09/12	DC
1	Construction Plan Based on Rev.0 (2014/09/12) Except for New Construction Corridor: Shape, Label, Area Table & ePASS	2014/12/31	DC

NOTES:

- Co-ordinates are NAD 83 Grid, UTM Zone 9 and Zone 10. Distances shown are in metres and decimals thereof. Chainages are two-dimensional and are on pipeline ditchline. Pipeline segment length derived from ditchline chainages.
- Fault Lines data has been provided from BGC Engineering Inc. Desktop Study dated December 20, 2013.
- Water crossing information has been provided by Stantec. Wetlands data has been provided by Stantec dated August 29, 2014. Freshwater Atlas wetlands outside of construction corridor have been removed from scenery.
- Cutblock data is confirmed using information from the Government of BC websites for Forest MapView and MapBC.
- This pipeline section is partially within the Agricultural Land Reserve.
- Field Survey Completed July 15, 2014
- This plan represents the best information available at the time of survey. Focus Surveys and its employees take no responsibility for the location of any underground conduits, pipes, or other facilities whether shown on or omitted from this plan. All underground installations should be located by the respective authorities prior to construction.

LEGEND
Proposed Pipeline R/W shown thus:
Proposed Temp. Workspaces shown thus:
Proposed Log Decks & Storage Sites shown thus:
Right of Way shown thus:
Roads shown thus:
Highway shown thus:
Railway line shown thus:
Seismic line/trail shown thus:
Recreation Tenure shown thus:
Drainages shown thus:
Buried cable shown thus:
Buried pipe shown thus:
Overhead powerline shown thus:
Riparian Reserve Zone shown thus:
Riparian Management Zone shown thus:
Forest Cover Reserve shown thus:
Archaeological site shown thus:
Agricultural Land Reserve bdy shown thus:
Coal Tenure bdy shown thus:
Cutblock bdy shown thus:
Fence bdy shown thus:
Fish/Wildlife Reserve bdy shown thus:
Grazing Tenure bdy shown thus:
Mineral Claim bdy shown thus:
Tree Farm Licence shown thus:
Quarry Reserve bdy shown thus:
Ungulate Winter Range bdy shown thus:
Visual Land Inventory shown thus:
Watershed Reserve bdy shown thus:
Wind Tenure bdy shown thus:
Woodlot bdy shown thus:
Fault Line shown thus:
Misc. Reserve/Notation bdy shown thus:
Misc. Licence/Permit bdy shown thus:
Stantec Wetland / Classification shown thus:
Crossings shown thus:
Old Growth Management Area shown thus:
Residences shown thus:
Power Pole shown thus:



APPROVED BY
PROJECT ENGINEER

STATION	DESCRIPTION	STATION	DESCRIPTION
W01037	75+065 Trib to Moberly River / S3 / RRZ = 20 RMZ = 20	N 6172094	E 534956 ILMB
W02879	74+287 Trib to Moberly River / S4 / RRZ = 0 RMZ = 30	N 6172499	E 535983 ILMB
W01038	74+200 Frank Roy Creek / S5 / RRZ = 0 RMZ = 30	N 6172560	E 535946 ILMB
W01039	73+456 Trib to Moberly River / No visible channel	N 6172668	E 536359 ILMB
W01034	72+976 Trib to Moberly River / No visible channel	N 6172697	E 536384 ILMB
W01033	72+710 Trib to Moberly River / Non-classified drainage / RRZ = 0 RMZ = 0	N 6172739	E 537097 ILMB
W01032	72+315 Trib to Moberly River / No visible channel	N 6172830	E 537480 ILMB
T00106	71+606 Silver Sands Snow Trail / Condition Unknown / REC160647 6	N 6173120	E 538120 MFLNRO
W02129	71+063 Moberly River / S1 / RRZ = 50 RMZ = 20	N 6173560	E 538395 ILMB
W01031	71+016 Trib to Moberly River / No visible channel	N 6173607	E 538394 ILMB
T00105	70+955 Trail / Condition Unknown	N 6173668	E 538393 Crown
No.	STATION DESCRIPTION	NAD 83 UTM ZONE 10	OWNER

TABLE OF CROSSINGS

Prince Rupert Gas Transmission Project

TransCanada
In business to deliver

PRINCE RUPERT GAS TRANSMISSION LTD.

PROPOSED VARIABLE WIDTH (28 to 82m) PIPELINE R/W FROM c-27-1, 94-B-1 TO b-89-C, 93-O-10 (SHEET CHAINAGE: 70+775 TO 75+281)

Unsurveyed Crown Land/Private Land/Crown Land, Peace River District

100 0 100 200 300 400

The intended plot size of this plan is 864mm in width by 560mm in height when plotted at a scale of 1: 5000 (use D size sheet)

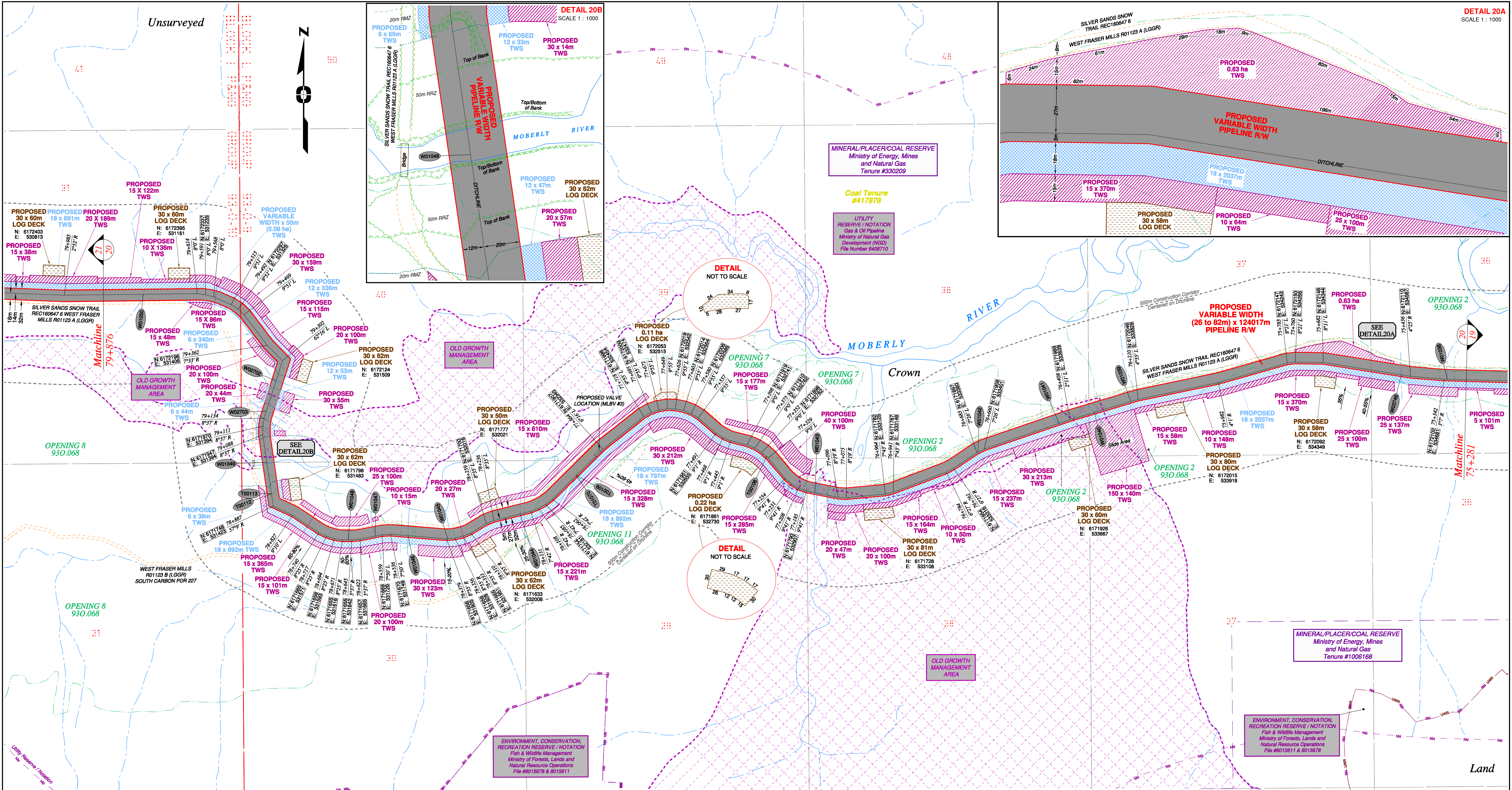
BCGS: 94B.010.020/94A.001/93P.091/93O.056.057.067.068.079.080.090.100

Sheet 19 of 30

FOCUS
Focus Surveys (BC) Limited Partnership
10716 - 100th Avenue Fort St John BC
V1J 1Z3 250.787.0300 www.focus.ca

FOCUS:
AFE: 130275CP01R1
TCPL: 004776-09-ML-03-0019
ePASS: 10048735

REV.
1

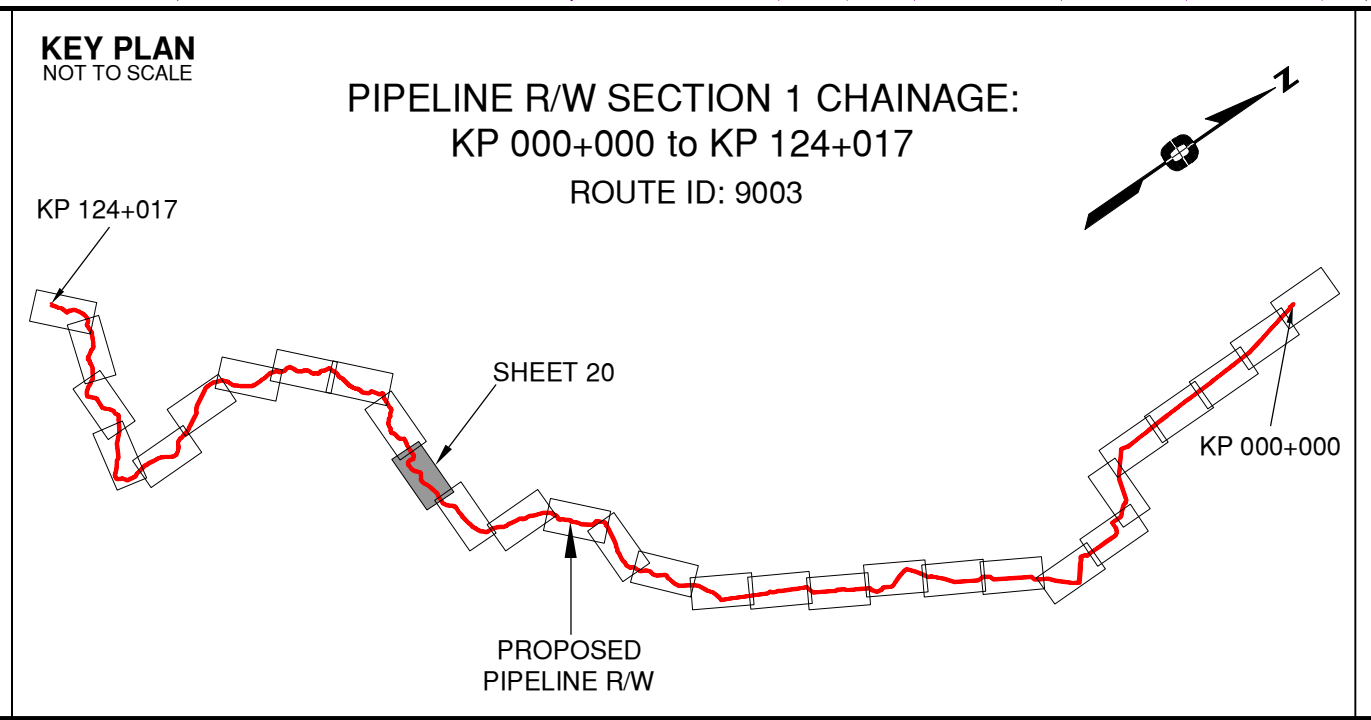


Rev	Revision Description	Date(Y/M/D)	By
0	Original Plan Prepared	2014/09/12	DC
1	Construction Plan Based on Rev.0 (2014/09/12) Except for New Construction Corridor: Shape, Label, Area Table & ePass	2014/12/31	DC

NOTES:

- Co-ordinates are NAD 83 Grid, UTM Zone 9 and Zone 10. Distances shown are in metres and decimals thereof. Chainages are two-dimensional and are on pipeline ditchline. Pipeline segment length derived from ditchline chainages.
- Fault Lines data has been provided from BGC Engineering Inc. Desktop Study dated December 20, 2013.
- Water crossing information has been provided by Stantec. Wetlands data has been provided by Stantec dated August 29, 2014. Freshwater Atlas wetlands outside of construction corridor have been removed from scenery.
- Cutback data is confirmed using information from the Government of BC websites for Forest MapView and MapBC.
- This pipeline section is partially within the Agricultural Land Reserve.
- Field Survey Completed July 15, 2014
- This plan represents the best information available at the time of survey. Focus Surveys and its employees take no responsibility for the location of any underground conduits, pipes, or other facilities whether shown on or omitted from this plan. All underground installations should be located by the respective authorities prior to construction.

LEGEND
Proposed Pipeline R/W shown thus:
Proposed Temp. Workspaces shown thus:
Proposed Log Decks & Storage Sites shown thus:
Right of Way shown thus:
Roads shown thus:
Highway shown thus:
Railway line shown thus:
Seismic line/trail shown thus:
Recreation Tenure shown thus:
Drainages shown thus:
Buried cable shown thus:
Buried pipe shown thus:
Overhead powerline shown thus:
Riparian Reserve Zone shown thus:
Forest Cover Reserve shown thus:
Archaeological site shown thus:
Agricultural Land Reserve shown thus:
Coal Tenure bdy shown thus:
Cutback bdy shown thus:
Fence bdy shown thus:
Fish/Wildlife Reserve bdy shown thus:
Grazing Tenure bdy shown thus:
Mineral Claim bdy shown thus:
Quarry Reserve bdy shown thus:
Ungulate Winter Range bdy shown thus:
Visual Land Inventory shown thus:
Watershed Reserve bdy shown thus:
Wind Tenure bdy shown thus:
Woodlot bdy shown thus:
Fault Line shown thus:
Misc. Reserve/Notation bdy shown thus:
Misc. Licence/Permit bdy shown thus:
Stantec Wetland / Classification shown thus:
Crossings shown thus:
Old Growth Management Area shown thus:
Residences shown thus:
Power Pole shown thus:



STATION	DESCRIPTION	STATION	DESCRIPTION
W01050	79+765 Trib to Moberly River / Non-classified drainage / RRZ = 0 RMZ = 0	N 6172338 E 531061	ILMB
W02702	79+243 Trib to Moberly River / S3 / RRZ = 20 RMZ = 20	N 6172097 E 531431	ILMB
W02703	79+154 Trib to Moberly River / S3 / RRZ = 20 RMZ = 20	N 6172013 E 531404	ILMB
W01049	79+011 Moberly River / S1 / RRZ = 50 RMZ = 20	N 6171870 E 531405	ILMB
T00112	78+922 Forestry Road / LGGR / R01123 A	N 6171783 E 531418	West Fraser Mills Ltd.
T00113	78+922 Silver Sands Snow Trail / Condition Unknown / REC160647 6	N 6171783 E 531418	MFLNRO
W01048	78+654 Trib to Moberly River / No visible channel	N 6171655 E 531632	ILMB
W01047	78+578 Trib to Moberly River / Non-classified drainage / RRZ = 0 RMZ = 0	N 6171665 E 531707	ILMB
W01046	78+487 Trib to Moberly River / S6 / RRZ = 0 RMZ = 20	N 6171666 E 531798	ILMB
W01045	78+377 Trib to Moberly River / Non-classified drainage / RRZ = 0 RMZ = 0	N 6171658 E 531908	ILMB
W01044	78+161 Trib to Moberly River / Non-classified drainage / RRZ = 0 RMZ = 0	N 6171727 E 532110	ILMB
T00109	77+968 Forestry Road / LGGR / R01123 B	N 6171834 E 532266	West Fraser Mills Ltd.
T01070	77+968 South Carbon PDR 227 / LGGR	N 6171834 E 532266	No Operator Identified
T00108	77+335 Trail / Condition Unknown	N 6171885 E 532795	Crown
W01043	77+161 Trib to Moberly River / S2 / RRZ = 30 RMZ = 20	N 6171786 E 532930	ILMB
W01042	76+680 Trib to Moberly River / No visible channel	N 6171899 E 533983	ILMB
W01041	76+440 Trib to Moberly River / S4 / RRZ = 0 RMZ = 30	N 6171979 E 533909	ILMB
W01040	76+337 Trib to Moberly River / S4 / RRZ = 0 RMZ = 30	N 6172009 E 533707	ILMB
W01039	76+231 Trib to Moberly River / Non-classified drainage / RRZ = 0 RMZ = 0	N 6172040 E 533808	ILMB
W03746	75+360 Trib to Moberly River	N 6172113 E 534561	ILMB
W01038	75+334 Trib to Moberly River / S6 / RRZ = 0 RMZ = 20	N 6172102 E 534689	ILMB
No.	STATION DESCRIPTION	NAD 83 UTM ZONE 10	OWNER

Prince Rupert Gas Transmission Project

PRINCE RUPERT GAS TRANSMISSION LTD.

PROPOSED VARIABLE WIDTH (28 to 82m) PIPELINE R/W FROM c-27-1, 94-B-1 TO b-89-C, 93-O-10 (SHEET CHAINAGE: 75+281 TO 79+876)

Unsurveyed Crown Land/Private Land/Crown Land, Peace River District

The intended plot size of this plan is 864mm in width by 560mm in height when plotted at a scale of 1: 5000 (use D size sheet)

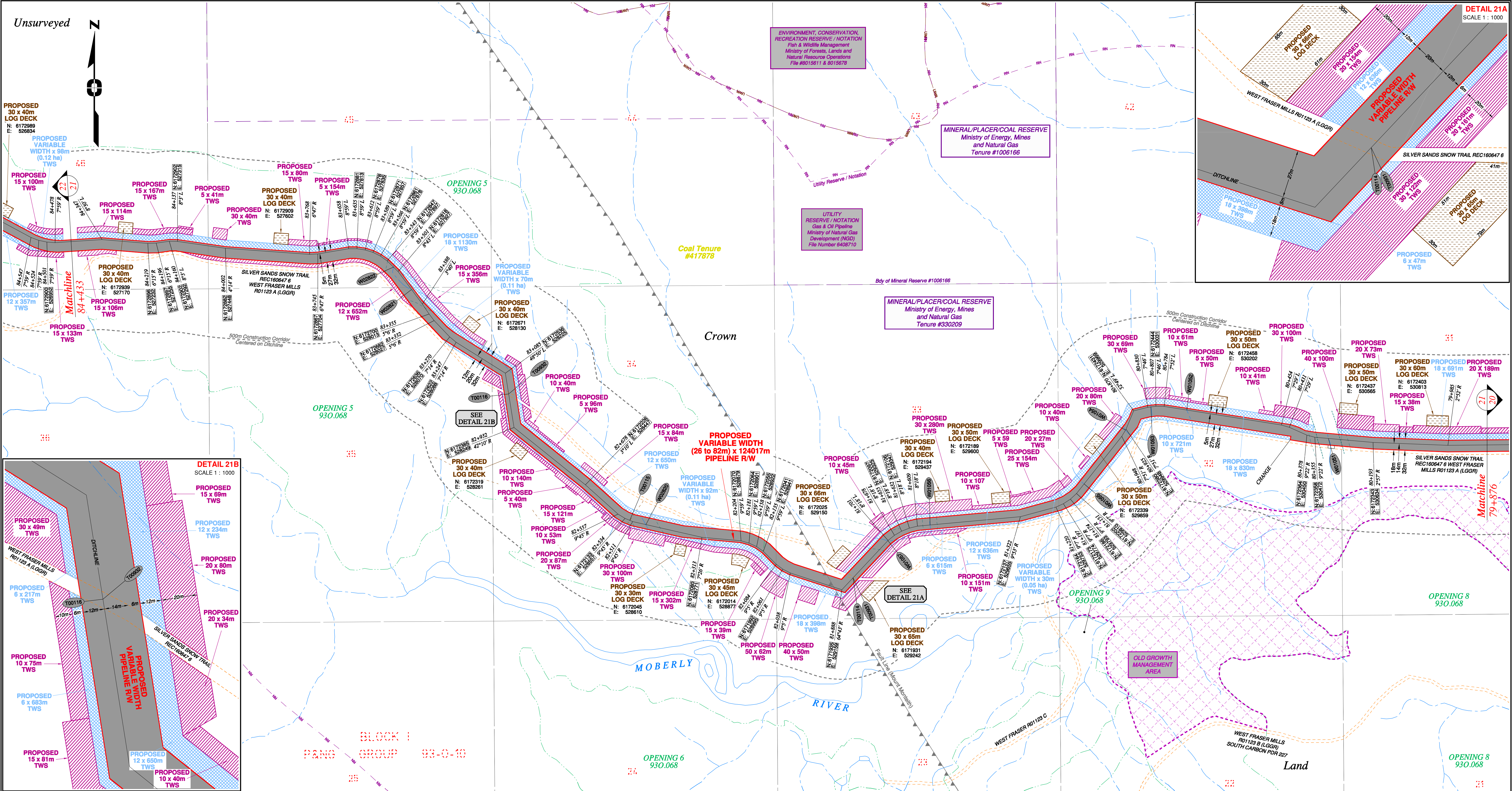
BCGS: 94B.010.020/94A.001/93P.091/93O.056.057.067.068.078.079.080.090.100

Sheet 20 of 30

FOCUS Focus Surveys (BC) Limited Partnership
10716 - 100th Avenue Fort St John BC V1J 1Z3 250.787.0300 www.focus.ca

FOCUS: 130275CP01R1
AFE: 500948
TCPL: 004776-09-ML-03-0020
ePASS: 10048735

REV. 1

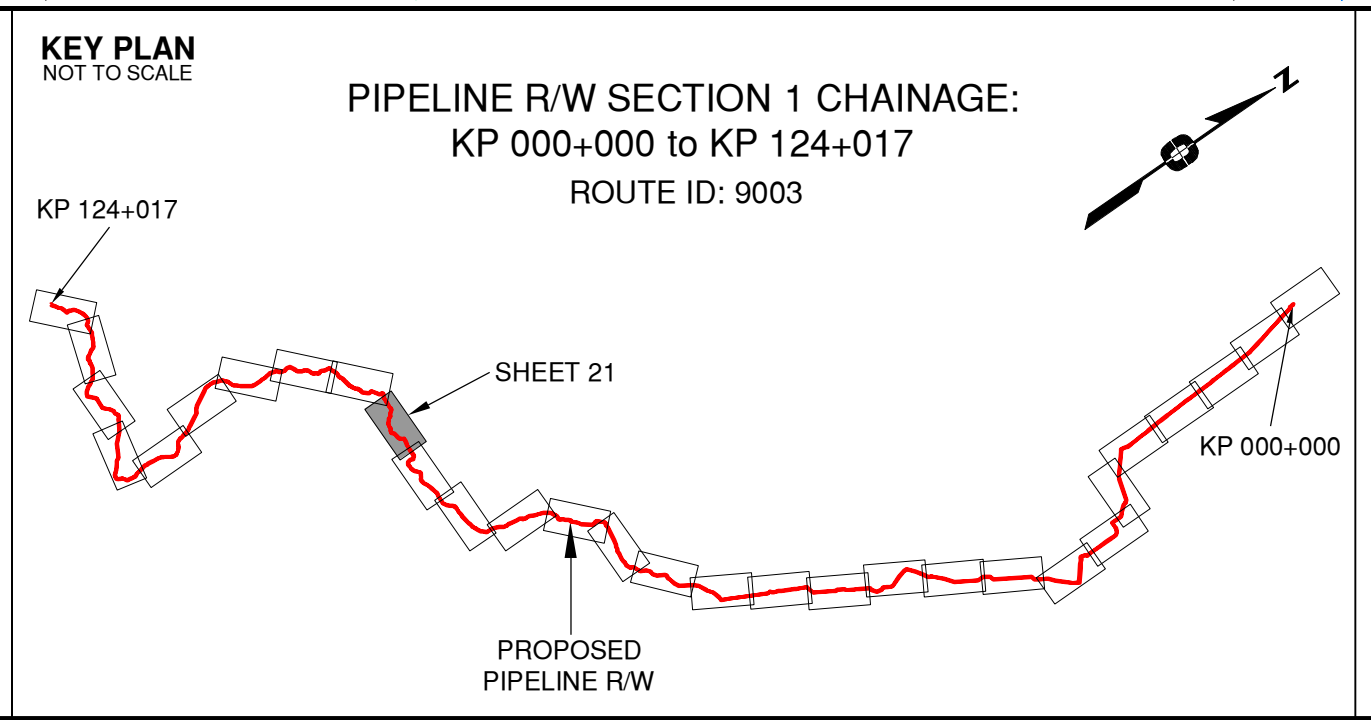


Rev	Revision Description	Date(Y/M/D)	By
0	Original Plan Prepared	2014/09/12	DC
1	Construction Plan Based on Rev.0 (2014/09/12) Except for New Construction Corridor: Shape, Label, Area Table & ePass	2014/12/31	DC

NOTES:

- Co-ordinates are NAD 83 Grid, UTM Zone 9 and Zone 10. Distances shown are in metres and decimals thereof. Chainages are two-dimensional and are on pipeline ditchline. Pipeline segment length derived from ditchline chainages.
- Fault Lines data has been provided from BGC Engineering Inc. Desktop Study dated December 20, 2013.
- Water crossing information has been provided by Stantec. Wetlands data has been provided by Stantec dated August 29, 2014. Freshwater Atlas wetlands outside of construction corridor have been removed from scenery.
- Cutback data is confirmed using information from the Government of BC websites for Forest MapView and MapBC.
- This pipeline section is partially within the Agricultural Land Reserve.
- Field Survey Completed July 15, 2014
- This plan represents the best information available at the time of survey. Focus Surveys and its employees take no responsibility for the location of any underground conduits, pipes, or other facilities whether shown on or omitted from this plan. All underground installations should be located by the respective authorities prior to construction.

LEGEND
Proposed Pipeline R/W shown thus:
Proposed Temp. Workspaces shown thus:
Proposed Log Decks & Storage Sites shown thus:
Right of Way shown thus:
Roads shown thus:
Highway shown thus:
Railway line shown thus:
Seismic line/trail shown thus:
Recreation Tenure shown thus:
Drainages shown thus:
Buried cable shown thus:
Buried pipe shown thus:
Overhead powerline shown thus:
Cutback data is confirmed using information from the Government of BC websites for Forest MapView and MapBC.
- This pipeline section is partially within the Agricultural Land Reserve.
- Field Survey Completed July 15, 2014
- This plan represents the best information available at the time of survey. Focus Surveys and its employees take no responsibility for the location of any underground conduits, pipes, or other facilities whether shown on or omitted from this plan. All underground installations should be located by the respective authorities prior to construction.



APPROVED BY
PROJECT ENGINEER

STATION	DESCRIPTION	STATION	DESCRIPTION
W02822	83+519 Trib to Moberly River / S6 / RRZ = 0 RMZ = 20	N 6172830	E 527914 ILMB
W02821	83+439 Trib to Moberly River / S4 / RRZ = 0 RMZ = 30	N 6172768	E 527964 ILMB
T00116	83+026 Forestry Road / LGGR / R01123 A	N 6172478	E 528234 WFLNRO
T00392	83+026 Silver Sands Snow Trail / Condition Unknown / REC160647 6	N 6172478	E 528234 WFLNRO
T00115	82+519 Trail / Condition Unknown	N 6172127	E 528570 Crown
W02820	82+473 Trib to Moberly River / S4 / RRZ = 0 RMZ = 30	N 6172116	E 528515 ILMB
T00114	81+842 Forestry Road / LGGR / R01123 A	N 6171988	E 529190 WFLNRO
T00391	81+842 Silver Sands Snow Trail / Condition Unknown / REC160647 6	N 6171988	E 529190 WFLNRO
W01057	81+701 Trib to Moberly River / S5 / RRZ = 0 RMZ = 30	N 6172071	E 529287 ILMB
W01056	81+573 Trib to Moberly River / S6 / RRZ = 0 RMZ = 20	N 6172114	E 529404 ILMB
W01055	81+116 Trib to Moberly River / Non-classified drainage / RRZ = 0 RMZ = 0	N 6172228	E 529832 ILMB
W01054	80+928 Trib to Moberly River / Non-classified drainage / RRZ = 0 RMZ = 0	N 6172378	E 529946 ILMB
W01053	80+820 Trib to Moberly River / Non-classified drainage / RRZ = 0 RMZ = 0	N 6172442	E 530017 ILMB
W01052	80+720 Trib to Moberly River / Non-classified drainage / RRZ = 0 RMZ = 0	N 6172433	E 530117 ILMB
W01051	80+317 Trib to Moberly River / S2 / RRZ = 30 RMZ = 20	N 6172355	E 530510 ILMB
No.	STATION DESCRIPTION	NAD 83 UTM ZONE 10	OWNER

TABLE OF CROSSINGS

Prince Rupert Gas Transmission Project

PRINCE RUPERT GAS TRANSMISSION LTD.

PROPOSED VARIABLE WIDTH (28 to 82m) PIPELINE R/W FROM c-27-1, 94-B-1 TO b-89-C, 93-O-10 (SHEET CHAINAGE: 79+876 TO 84+433)

Unsurveyed Crown Land/Private Land/Crown Land, Peace River District

The intended plot size of this plan is 864mm in width by 560mm in height when plotted at a scale of 1: 5000 (use D size sheet)

BCGS: 94B.010.020/94A.001/93P.091/93O.056.057.067.068.078.079.080.090.100

Sheet 21 of 30

FOCUS

Focus Surveys (BC) Limited Partnership

10715 - 100th Avenue Fort St. John BC V1J 1Z3 250.787.0300 www.focus.ca

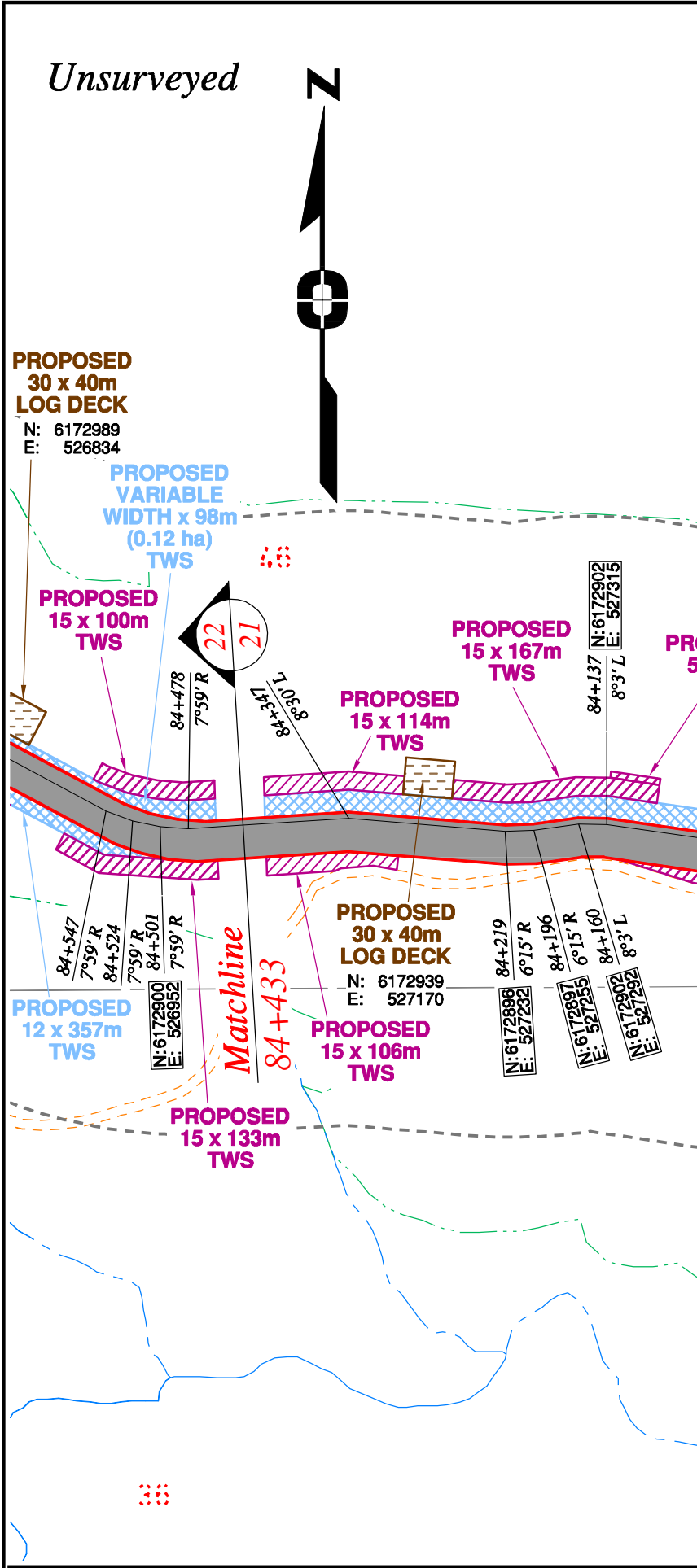
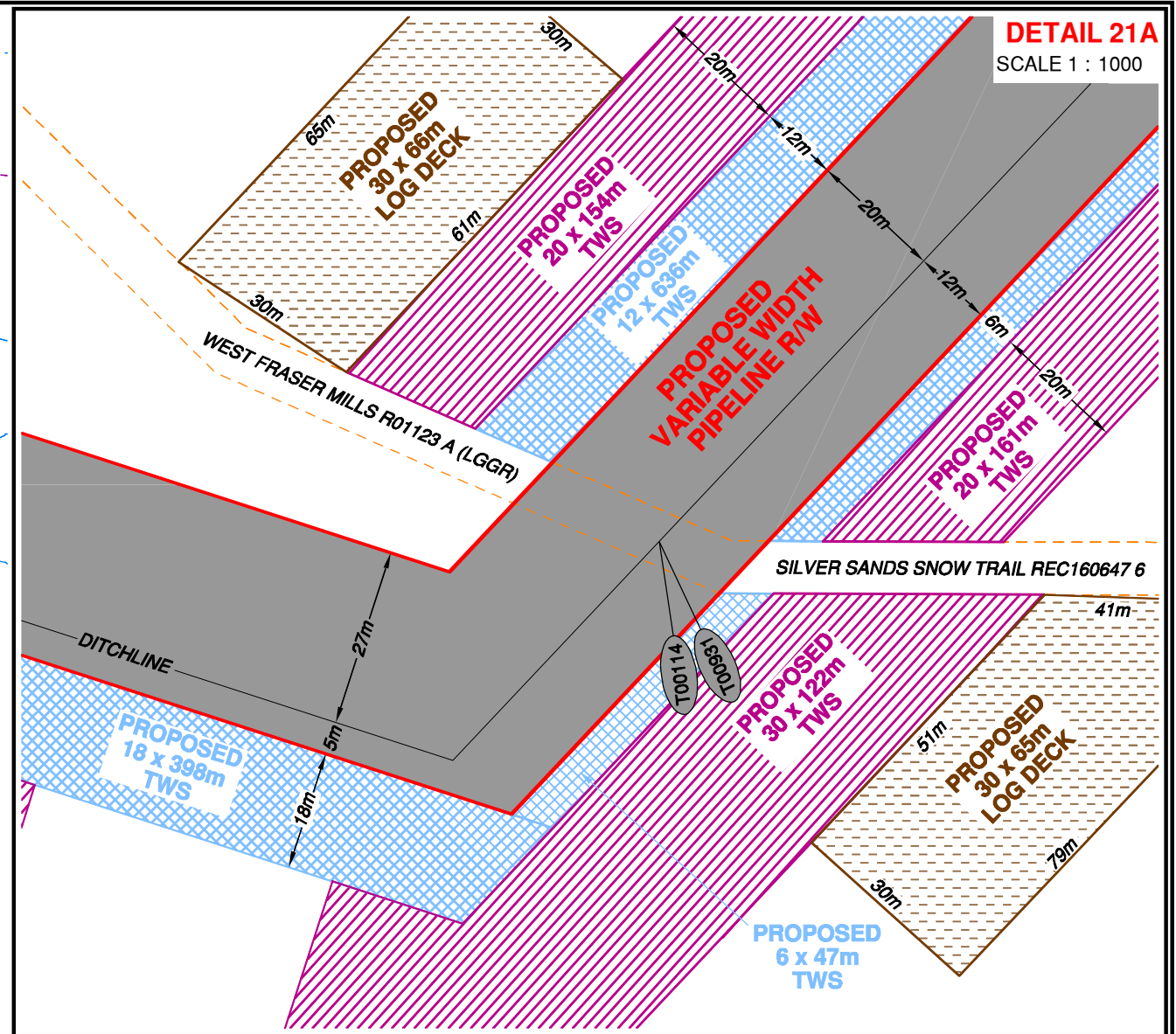
FOCUS:

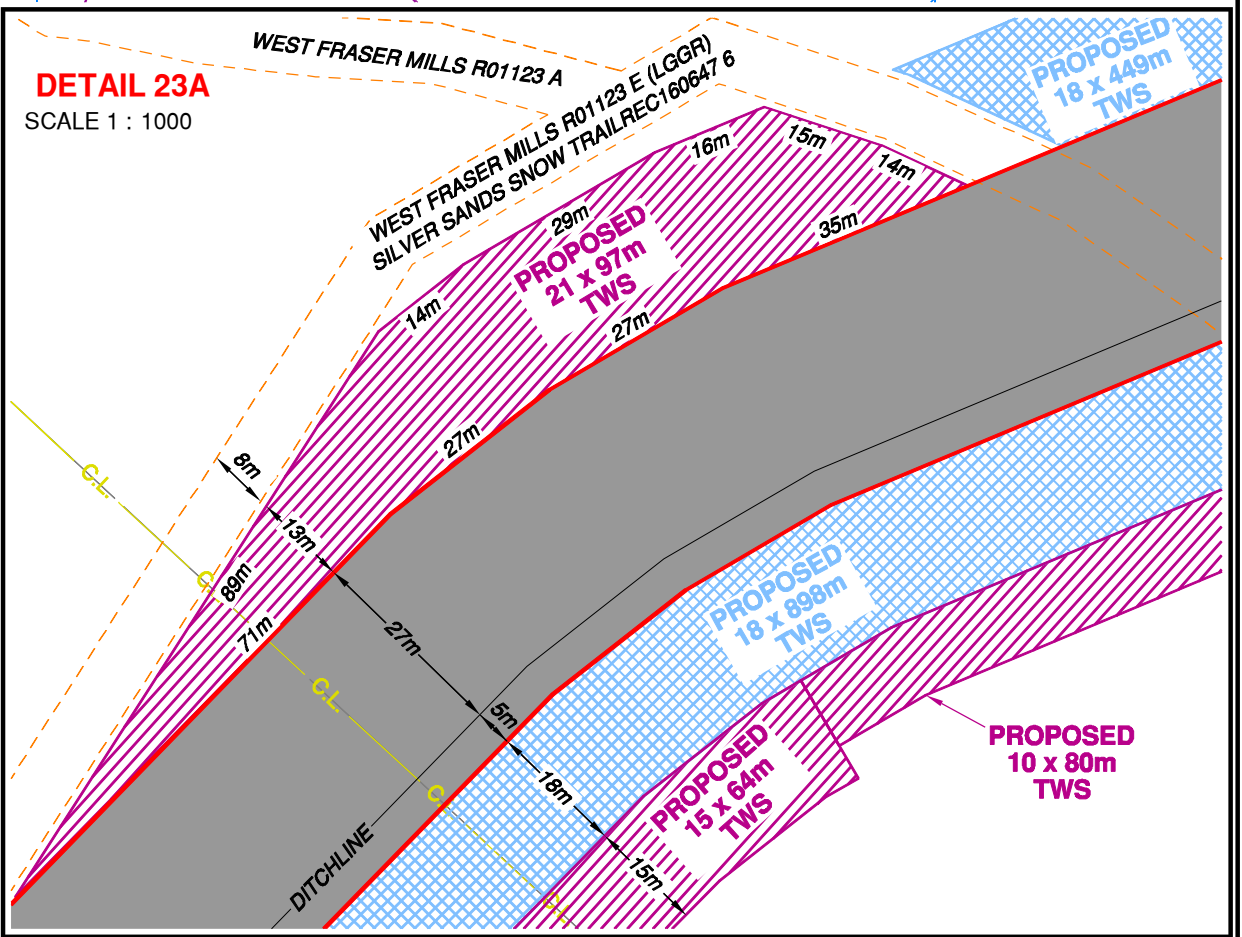
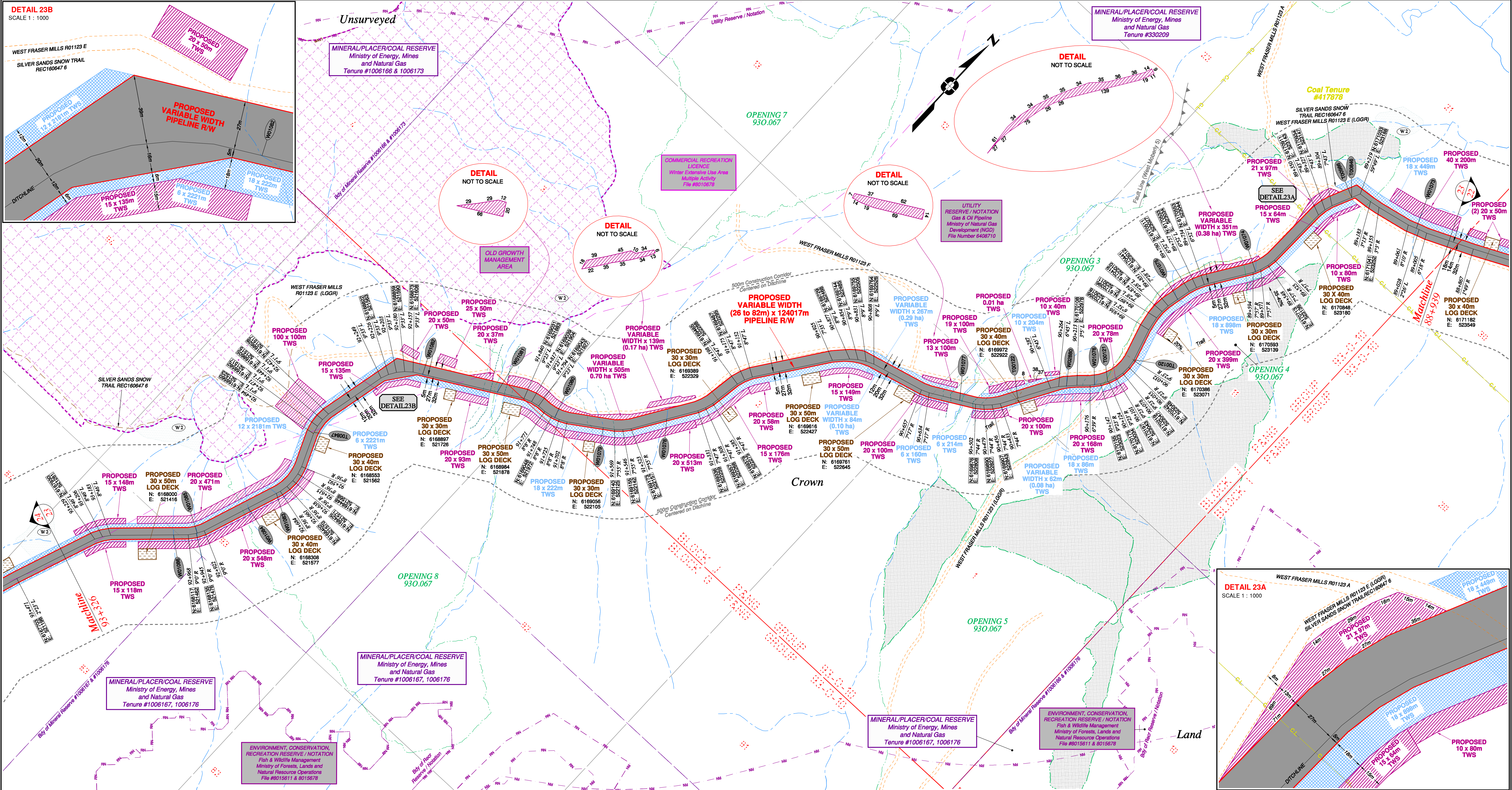
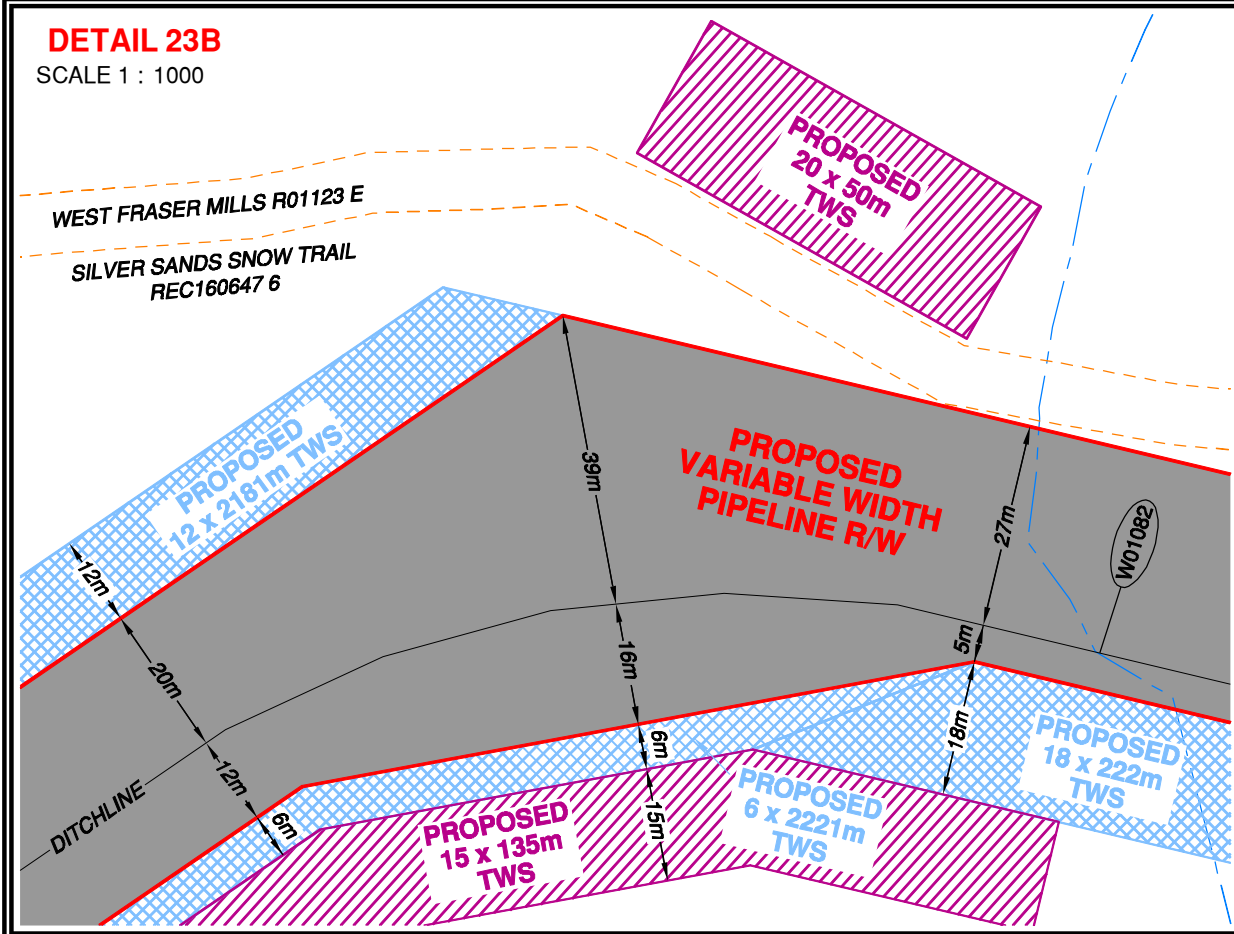
AFCE: 130275CP01R1

TCPL: 004776-09-ML-03-0021

ePASS: 10048735

REV. 1



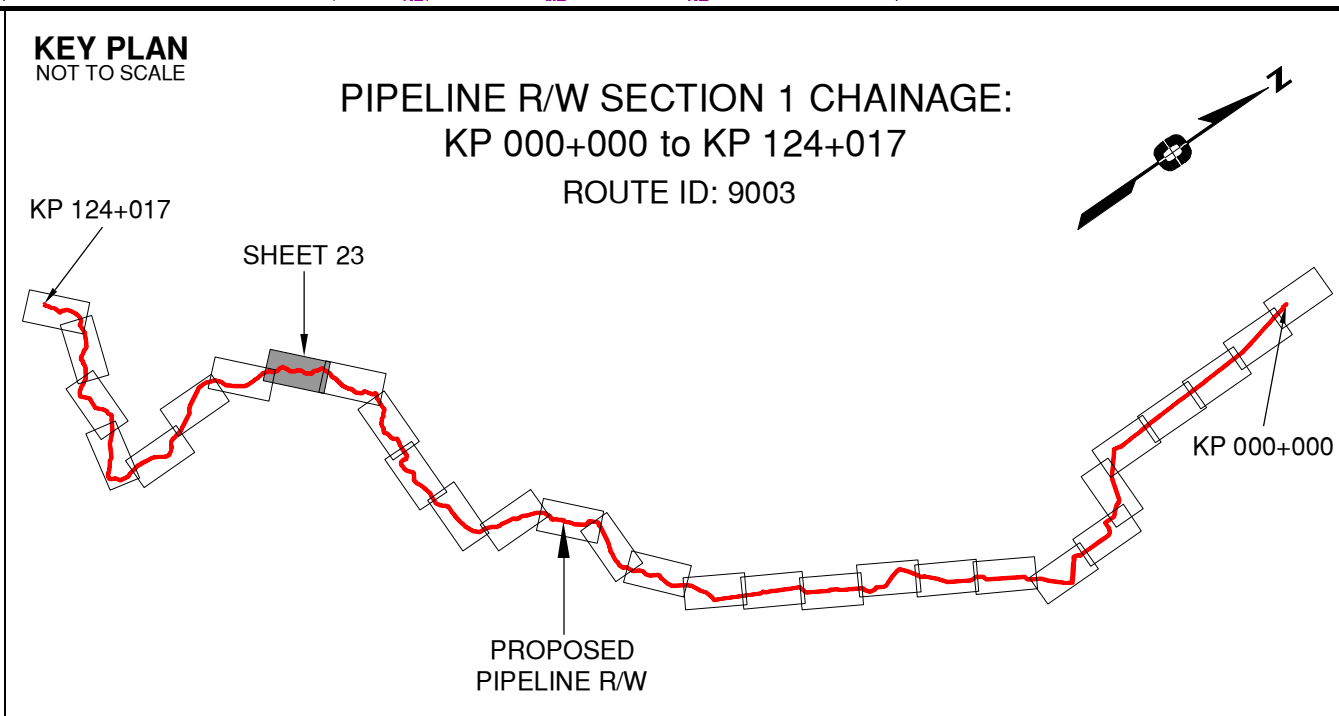


Rev	Revision Description	Date(Y/M/D)	By
0	Original Plan Prepared	2014/09/12	DC
1	Construction Plan Based on Rev.0 (2014/09/12) Except for New Construction Corridor: Shape, Label, Area Table & ePass	2014/12/31	DC

NOTES:

- Co-ordinates are NAD 83 Grid, UTM Zone 9 and Zone 10. Distances shown are in metres and decimals thereof. Chainages are two-dimensional and are on pipeline ditchline. Pipeline segment length derived from ditchline chainages.
- Fault Lines data has been provided from BGC Engineering Inc. Desktop Study dated December 20, 2013.
- Water crossing information has been provided by Stantec. Wetlands data has been provided by Stantec dated August 29, 2014. Freshwater Atlas wetlands outside of construction corridor have been removed from scenery.
- Cutblock data is confirmed using information from the Government of BC websites for Forest Map/View and MapBC.
- This pipeline section is partially within the Agricultural Land Reserve.
- Field Survey Completed July 15, 2014
- This plan represents the best information available at the time of survey. Focus Surveys and its employees take no responsibility for the location of any underground conduits, pipes, or other facilities whether shown on or omitted from this plan. All underground installations should be located by the respective authorities prior to construction.

LEGEND
Proposed Pipeline R/W shown thus:
Proposed Temp. Workspaces shown thus:
Proposed Log Decks & Storage Sites shown thus:
Right of Way shown thus:
Roads shown thus:
Highway shown thus:
Railway line shown thus:
Seismic line/trail shown thus:
Recreation Tenure shown thus:
Drainages shown thus:
Buried cable shown thus:
Buried pipe shown thus:
Overhead powerline shown thus:
Riparian Reserve Zone shown thus:
Forest Management Zone shown thus:
Forest Cover Reserve shown thus:
Archaeological site shown thus:
Agricultural Land Reserve bdy shown thus:
Coal Tenure bdy shown thus:
Cutblock shown thus:
Fence bdy shown thus:
Fish/Wildlife Reserve bdy shown thus:
Grazing Tenure bdy shown thus:
Mineral Claim bdy shown thus:
Tree Farm Licence shown thus:
Quarry Reserve bdy shown thus:
Ungulate Winter Range bdy shown thus:
Visual Land Inventory shown thus:
Watershed Reserve bdy shown thus:
Wind Tenure bdy shown thus:
Woodlot bdy shown thus:
Fault Line shown thus:
Misc. Reserve/Notation bdy shown thus:
Misc. Licence/Permit bdy shown thus:
Stantec Wetland / Classification shown thus:
Crossings shown thus:
Old Growth Management Area shown thus:
Residences shown thus:
Power Pole shown thus:



STATION	DESCRIPTION
W01096	93+009 Trib to Moberly River / Non-classified drainage / RRZ = 0 RMZ = 0
W01095	92+943 Trib to Moberly River / Non-classified drainage / RRZ = 0 RMZ = 0
W01094	92+784 Trib to Moberly River / Non-classified drainage / RRZ = 0 RMZ = 0
W01093	92+696 Trib to Moberly River / Non-classified drainage / RRZ = 0 RMZ = 0
T00847	92+491 Forestry Road / LGGR / R01123 E
W01082	92+130 Trib to Moberly River / No visible channel
W01081	91+916 Trib to Moberly River / S3 / RRZ = 20 RMZ = 20
W01080	91+739 Trib to Moberly River / Non-classified drainage / RRZ = 0 RMZ = 0
W01079	91+601 Trib to Moberly River / S5 / RRZ = 0 RMZ = 30
W01078	91+420 Trib to Moberly River / Non-classified drainage / RRZ = 0 RMZ = 0
W01077	90+547 Trib to Moberly River / S2 / RRZ = 30 RMZ = 20
T00122	90+381 Trail / Condition Unknown
W02089	90+242 Trib to Moberly River / S4 / RRZ = 0 RMZ = 30
W01076	90+164 Trib to Moberly River / S4 / RRZ = 0 RMZ = 30
T00121	90+127 Forest Service Road / LGGR / R01123 E
T00120	90+030 Trail / Condition Unknown
W01075	89+819 Trib to Moberly River / Non-classified drainage / RRZ = 0 RMZ = 0
W01074	89+587 Trib to Moberly River / S5 / RRZ = 0 RMZ = 0
T00846	89+245 Forestry Road / LGGR / R01123 A
T00886	89+245 Silver Sands Snow Trail / Condition Unknown / REC160647 6
W01073	89+036 Trib to Moberly River / Non-classified drainage / RRZ = 0 RMZ = 0
No.	STATION DESCRIPTION

STATION	DESCRIPTION
W01089	92+432 Trib to Moberly River / Non-classified drainage / RRZ = 0 RMZ = 0
W01088	92+274 Trib to Moberly River / Non-classified drainage / RRZ = 0 RMZ = 0
W01087	92+130 Trib to Moberly River / Non-classified drainage / RRZ = 0 RMZ = 0
W01086	91+916 Trib to Moberly River / S3 / RRZ = 20 RMZ = 20
W01085	91+739 Trib to Moberly River / Non-classified drainage / RRZ = 0 RMZ = 0
W01084	91+601 Trib to Moberly River / S5 / RRZ = 0 RMZ = 30
W01083	91+420 Trib to Moberly River / Non-classified drainage / RRZ = 0 RMZ = 0
W01082	90+547 Trib to Moberly River / S2 / RRZ = 30 RMZ = 20
W01081	90+381 Trib to Moberly River / No visible channel
W01080	90+242 Trib to Moberly River / S4 / RRZ = 0 RMZ = 30
W01079	90+164 Trib to Moberly River / S4 / RRZ = 0 RMZ = 30
W01078	90+127 Forest Service Road / LGGR / R01123 E
W01077	90+030 Trail / Condition Unknown
W01076	89+819 Trib to Moberly River / Non-classified drainage / RRZ = 0 RMZ = 0
W01075	89+587 Trib to Moberly River / S5 / RRZ = 0 RMZ = 0
W01074	89+245 Forestry Road / LGGR / R01123 A
W01073	89+245 Silver Sands Snow Trail / Condition Unknown / REC160647 6
W01072	89+036 Trib to Moberly River / Non-classified drainage / RRZ = 0 RMZ = 0
No.	STATION DESCRIPTION

Prince Rupert Gas Transmission Project

TransCanada
In business to deliver

PRINCE RUPERT GAS TRANSMISSION LTD.

PROPOSED VARIABLE WIDTH (28 to 82m) PIPELINE R/W
FROM c-27-1, 94-B-1 TO b-89-C, 93-O-10
(SHEET CHAINAGE: 88+939 TO 93+326)

Unsurveyed Crown Land/Private Land/Crown Land, Peace River District

The intended plot size of this plan is 864mm in width by 560mm in height when plotted at a scale of 1: 5000 (use D size sheet)

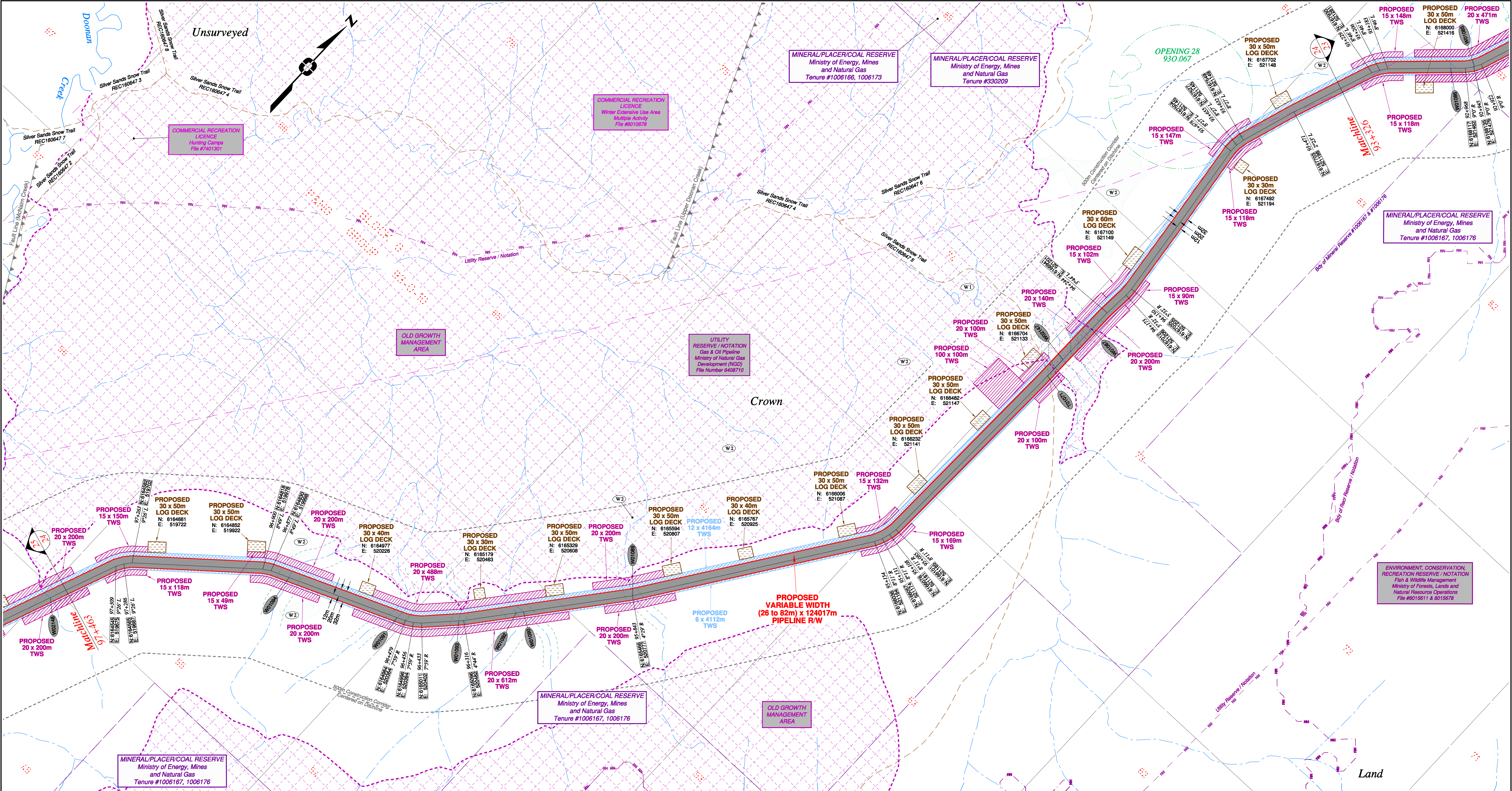
BCGS: 94B.010.020/94A.001/93P.091/93O.056.057.067.068.076.079.080.090.100

FOCUS
Focus Surveys (BC) Limited Partnership
10716 - 100th Avenue Fort St. John BC
V1J 1Z3 250.757.0300 www.focus.ca

FOCUS:
AFE: 130275CP01R1
TCPL: 004776-09-ML-03-0023
ePASS: 10048735

Sheet 23 of 30

REV. 1

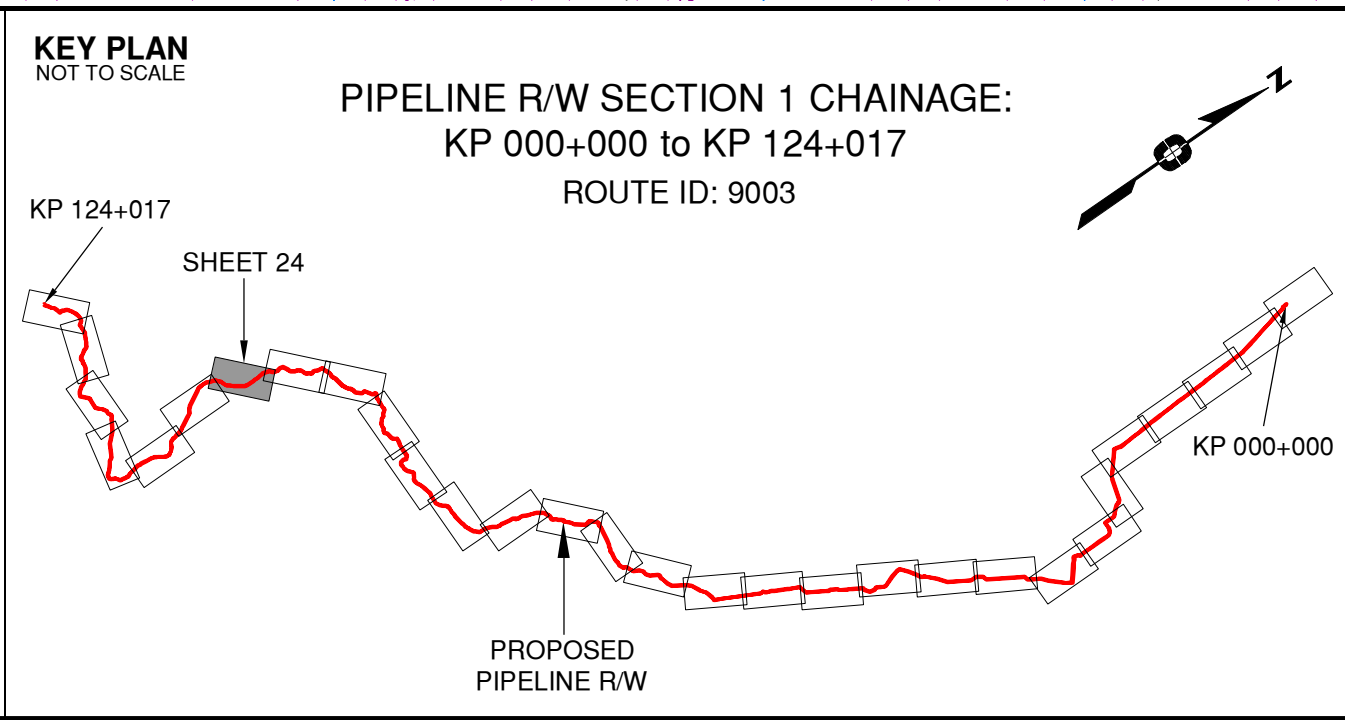


Rev	Revision Description	Date(Y/M/D)	By
0	Original Plan Prepared	2014/09/12	DC
1	Construction Plan Based on Rev.0 (2014/09/12) Except for New Construction Corridor: Shape, Label, Area Table & ePASS	2014/12/31	DC

NOTES:

- Co-ordinates are NAD 83 Grid, UTM Zone 9 and Zone 10. Distances shown are in metres and decimals thereof. Chainages are two-dimensional and are on pipeline ditchline. Pipeline segment length derived from ditchline chainages.
- Fault Lines data has been provided from BGC Engineering Inc. Desktop Study dated December 20, 2013.
- Water crossing information has been provided by Stantec. Wetlands data has been provided by Stantec dated August 29, 2014. Freshwater Atlas wetlands outside of construction corridor have been removed from scenery.
- Cutblock data is confirmed using information from the Government of BC websites for Forest MapView and MapBC.
- This pipeline section is partially within the Agricultural Land Reserve.
- Field Survey Completed July 15, 2014
- This plan represents the best information available at the time of survey. Focus Surveys and its employees take no responsibility for the location of any underground conduits, pipes, or other facilities whether shown on or omitted from this plan. All underground installations should be located by the respective authorities prior to construction.

LEGEND
Proposed Pipeline R/W shown thus:
Proposed Temp. Workspaces shown thus:
Proposed Log Decks & Storage Sites shown thus:
Right of Way shown thus:
Roads shown thus:
Highway shown thus:
Railway line shown thus:
Seismic line/trail shown thus:
Recreation Tenure shown thus:
Drainages shown thus:
Buried cable shown thus:
Buried pipe shown thus:
Overhead powerline shown thus:
Fault Line shown thus:
Misc. Reserve/Notation bdy shown thus:
Stantec Wetland / Classification shown thus:
Riparian Reserve Zone shown thus:
Riparian Management Zone shown thus:
Forest Cover Reserve shown thus:
Archaeological site shown thus:
Agricultural Land Reserve bdy shown thus:
Coal Tenure bdy shown thus:
Cutblock bdy shown thus:
Fence bdy shown thus:
Fish/Wildlife Reserve bdy shown thus:
Grazing Tenure bdy shown thus:
Mineral Claim bdy shown thus:
Tree Farm Licence shown thus:
Quarry Reserve bdy shown thus:
Ungulate Winter Range bdy shown thus:
Visual Land Inventory shown thus:
Watershed Reserve bdy shown thus:
Wind Tenure bdy shown thus:
Woodlot bdy shown thus:
Misc. Reserve/Notation bdy shown thus:
Stantec Wetland / Classification shown thus:
Crossings shown thus:
Old Growth Management Area shown thus:
Residences shown thus:
Power Pole shown thus:



APPROVED BY
PROJECT ENGINEER

STATION	DESCRIPTION	NAD 83 UTM ZONE 10	OWNER
W01094	96+823 Trib to Doonan Creek / S4 / RRZ = 0 RMZ = 30	N 6164851 E 520047	ILMB
W01091	96+503 Trib to Doonan Creek / S6 / RRZ = 0 RMZ = 20	N 6164975 E 520042	ILMB
W01093	96+330 Trib to Doonan Creek / S6 / RRZ = 0 RMZ = 20	N 6165098 E 520073	ILMB
W01092	96+169 Trib to Doonan Creek / S4 / RRZ = 0 RMZ = 30	N 6165211 E 520574	ILMB
W01090	96+148 Trib to Doonan Creek / S6 / RRZ = 0 RMZ = 20	N 6165227 E 520587	ILMB
W01089	96+841 Silver Sands Snow Trail / Condition Unknown / REC160647 5	N 6165467 E 520778	ILMB
T01071	94+486 Silver Sands Snow Trail / Condition Unknown / REC160647 5	N 6166700 E 521200	ILMB
W02147	94+424 Trib to Doonan Creek / S2 / RRZ = 30 RMZ = 20	N 6166762 E 521200	ILMB
W01087	94+307 Trib to Doonan Creek / S4 / RRZ = 0 RMZ = 30	N 6166878 E 521201	ILMB
No.	STATION DESCRIPTION	NAD 83 UTM ZONE 10	OWNER

TABLE OF CROSSINGS

Prince Rupert Gas Transmission Project

PRINCE RUPERT GAS TRANSMISSION LTD.

PROPOSED VARIABLE WIDTH (28 to 82m) PIPELINE R/W FROM c-27-I, 94-B-1 TO b-89-C, 93-O-10 (SHEET CHAINAGE: 93+326 TO 97+463)

Unsurveyed Crown Land/Private Land/Crown Land, Peace River District

The intended plot size of this plan is 864mm in width by 560mm in height when plotted at a scale of 1: 5000 (use D size sheet)

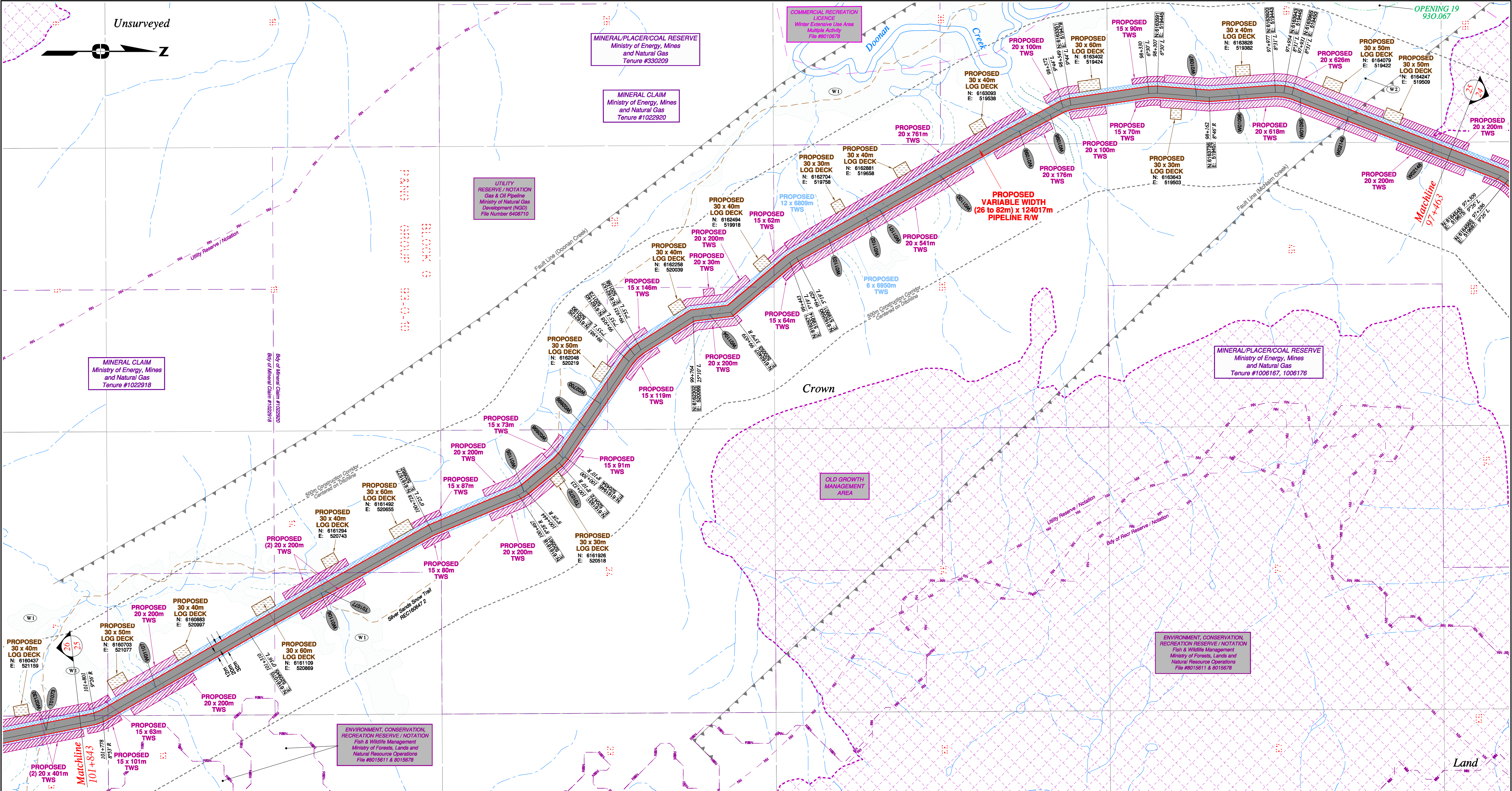
BCGS: 94B.010.020/94A.001/93P.091/93O.056/057/067/068/078/079/080/090/100

Sheet 24 of 30

FOCUS Focus Surveys (BC) Limited Partnership 10710 - 100th Avenue Fort St John BC V1J 1Z3 250.787.0300 www.focus.ca

FOCUS: 130275CP01R1 500948
AFCE: 004776-09-ML-03-0024
TCPL: 10048735
ePASS:

REV. 1

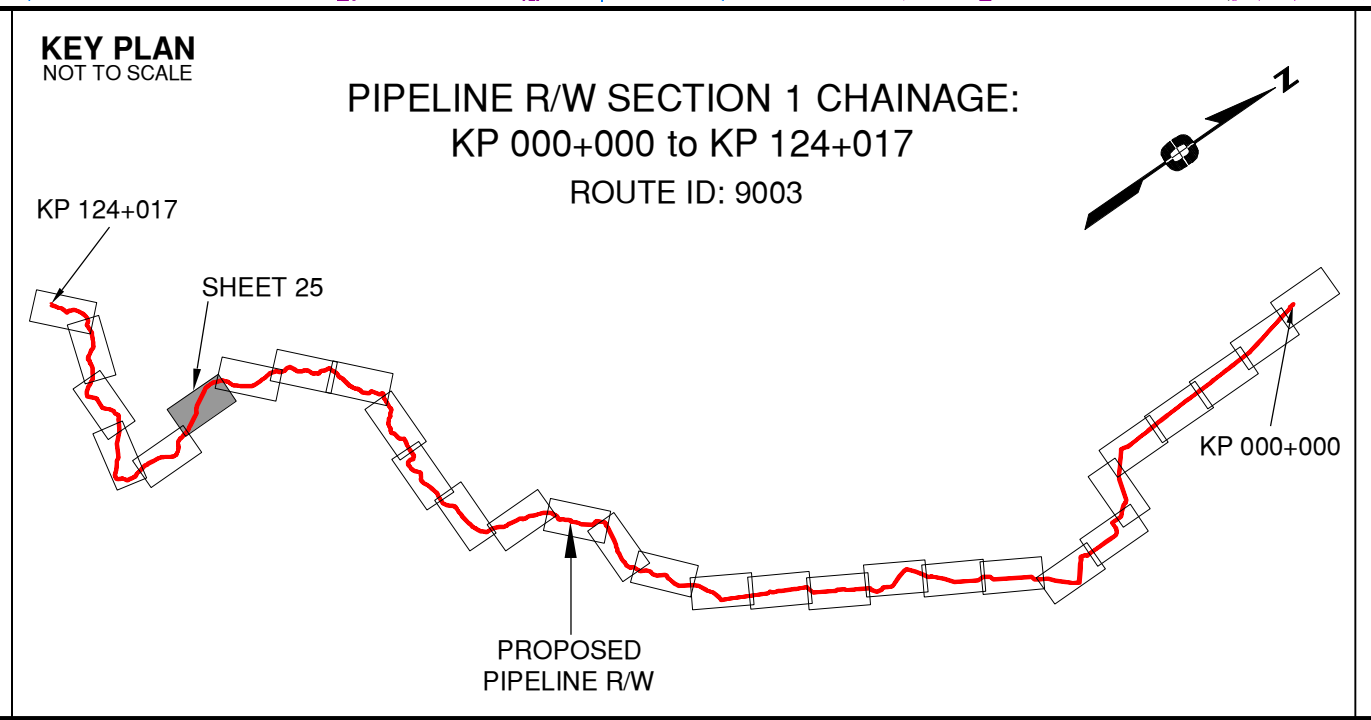


Rev	Revision Description	Date(Y/M/D)	By
0	Original Plan Prepared	2014/09/12	DC
1	Construction Plan Based on Rev.0 (2014/09/12) Except for New Construction Corridor: Shape, Label, Area Table & ePASS	2014/12/31	DC

NOTES:

- Co-ordinates are NAD 83 Grid, UTM Zone 9 and Zone 10. Distances shown are in metres and decimals thereof. Chainages are two-dimensional and are on pipeline ditchline. Pipeline segment length derived from ditchline chainages.
- Fault Lines data has been provided from BGC Engineering Inc. Desktop Study dated December 20, 2013.
- Water crossing information has been provided by Stantec. Wetlands data has been provided by Stantec dated August 29, 2014. Freshwater Atlas wetlands outside of construction corridor have been removed from scenery.
- Cutback data is confirmed using information from the Government of BC websites for Forest Map View and MapBC.
- This pipeline section is partially within the Agricultural Land Reserve.
- Field Survey Completed July 15, 2014
- This plan represents the best information available at the time of survey. Focus Surveys and its employees take no responsibility for the location of any underground conduits, pipes, or other facilities whether shown on or omitted from this plan. All underground installations should be located by the respective authorities prior to construction.

LEGEND
Proposed Pipeline R/W shown thus:
Proposed Temp. Workspaces shown thus:
Proposed Log Decks & Storage Sites shown thus:
Right of Way shown thus:
Roads shown thus:
Highway shown thus:
Railway line shown thus:
Seismic line/trail shown thus:
Recreation Tenure shown thus:
Drainages shown thus:
Buried cable shown thus:
Buried pipe shown thus:
Overhead powerline shown thus:
Riparian Reserve Zone shown thus:
Riparian Management Zone shown thus:
Forest Cover Reserve shown thus:
Archaeological site shown thus:
Agricultural Land Reserve bdy shown thus:
Coal Tenure bdy shown thus:
Cutback bdy shown thus:
Fence bdy shown thus:
Fish/Wildlife Reserve bdy shown thus:
Grazing Tenure bdy shown thus:
Mineral Claim bdy shown thus:
Tree Farm Licence shown thus:
Quarry Reserve bdy shown thus:
Ungulate Winter Range bdy shown thus:
Visual Land Inventory shown thus:
Watershed Reserve bdy shown thus:
Wind Tenure bdy shown thus:
Woodlot bdy shown thus:
Fault Line shown thus:
Misc. Reserve/Notation bdy shown thus:
Misc. Licence/Permit bdy shown thus:
Stantec Wetland / Classification shown thus:
Crossings shown thus:
Old Growth Management Area shown thus:
Residences shown thus:
Power Pole shown thus:



APPROVED BY

PROJECT ENGINEER

No.	STATION	DESCRIPTION	NAD 83 UTM ZONE 10	OWNER
W01107	101+609	Trib to Doonan Creek / S6 / RRZ = 0 RMZ = 20	N 6160810 E 521094	ILMB
W01108	101+080	Trib to Doonan Creek / S4 / RRZ = 0 RMZ = 30	N 6161270 E 520833	ILMB
T01077	101+069	Silver Sands Snow Trail / Condition Unknown / REC160647.2	N 6161280 E 520827	MFLNRO
W01105	100+450	Trib to Doonan Creek / S6 / RRZ = 0 RMZ = 20	N 6161833 E 520552	ILMB
T01072	100+338	Silver Sands Snow Trail / Condition Unknown / REC160647.2	N 6161919 E 520481	MFLNRO
W02698	100+307	Trib to Doonan Creek / No visible channel	N 6161942 E 520460	ILMB
W02699	100+201	Trib to Doonan Creek / No visible channel	N 6162001 E 520372	ILMB
W02700	100+123	Trib to Doonan Creek / No visible channel	N 6162045 E 520307	ILMB
W01104	99+716	Trib to Doonan Creek / S6 / RRZ = 0 RMZ = 20	N 6162349 E 520060	ILMB
W01103	99+316	Trib to Doonan Creek / S6 / RRZ = 0 RMZ = 20	N 6162680 E 519850	ILMB
W01102	99+197	Trib to Doonan Creek / Non-classified drainage / RRZ = 0 RMZ = 0	N 6162784 E 519791	ILMB
W01101	99+155	Trib to Doonan Creek / S6 / RRZ = 0 RMZ = 20	N 6162821 E 519770	ILMB
W01100	98+962	Trib to Doonan Creek / S4 / RRZ = 0 RMZ = 30	N 6162889 E 519674	ILMB
W01099	98+709	Trib to Doonan Creek / S6 / RRZ = 0 RMZ = 20	N 6163208 E 519550	ILMB
W01098	98+613	Trib to Doonan Creek / S3 / RRZ = 20 RMZ = 20	N 6163294 E 519505	ILMB
W01097	98+198	Trib to Doonan Creek / Non-classified drainage / RRZ = 0 RMZ = 0	N 6163700 E 519454	ILMB
W01096	98+079	Trib to Doonan Creek / S6 / RRZ = 0 RMZ = 20	N 6163818 E 519451	ILMB
W01095	97+905	Trib to Doonan Creek / No visible channel	N 6163989 E 519459	ILMB
W02149	97+764	Trib to Doonan Creek / Non-classified drainage / RRZ = 0 RMZ = 0	N 6164121 E 519510	ILMB
W02148	97+511	Trib to Doonan Creek / S6 / RRZ = 0 RMZ = 20	N 6164357 E 519602	ILMB
No.	STATION	DESCRIPTION	NAD 83 UTM ZONE 10	OWNER

TABLE OF CROSSINGS

Prince Rupert Gas Transmission Project

PRINCE RUPERT GAS TRANSMISSION LTD.

PROPOSED VARIABLE WIDTH (28 to 82m) PIPELINE R/W FROM c-27-1, 94-B-1 TO b-89-C, 93-O-10 (SHEET CHAINAGE: 97+463 TO 101+843)

Unsurveyed Crown Land/Private Land/Crown Land, Peace River District

The intended plot size of this plan is 864mm in width by 560mm in height when plotted at a scale of 1 : 5000 (use D size sheet)

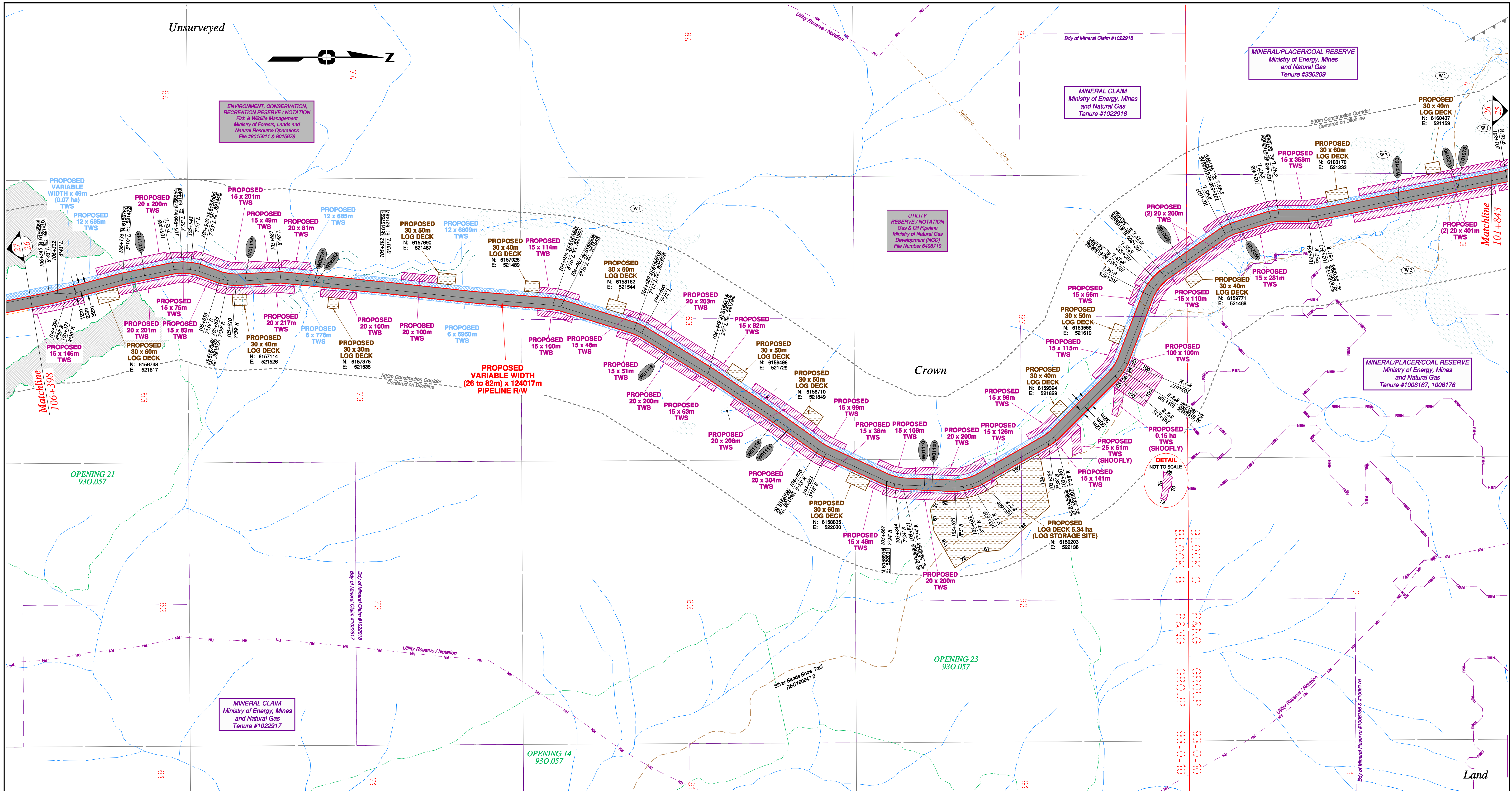
BCGS: 94B.010.020/94A.001/93P.091/93O.056.057.067.068.078.079.080.090.100

Sheet 25 of 30

FOCUS Focus Surveys (BC) Limited Partnership 10715 - 100th Avenue, Fort St. John, BC V1J 1Z3 250.757.0300 www.focus.ca

FOCUS: 130275CP01R1
AFE: 500948
TCPL: 004776-09-ML-03-0025
ePASS: 10048735

REV. 1

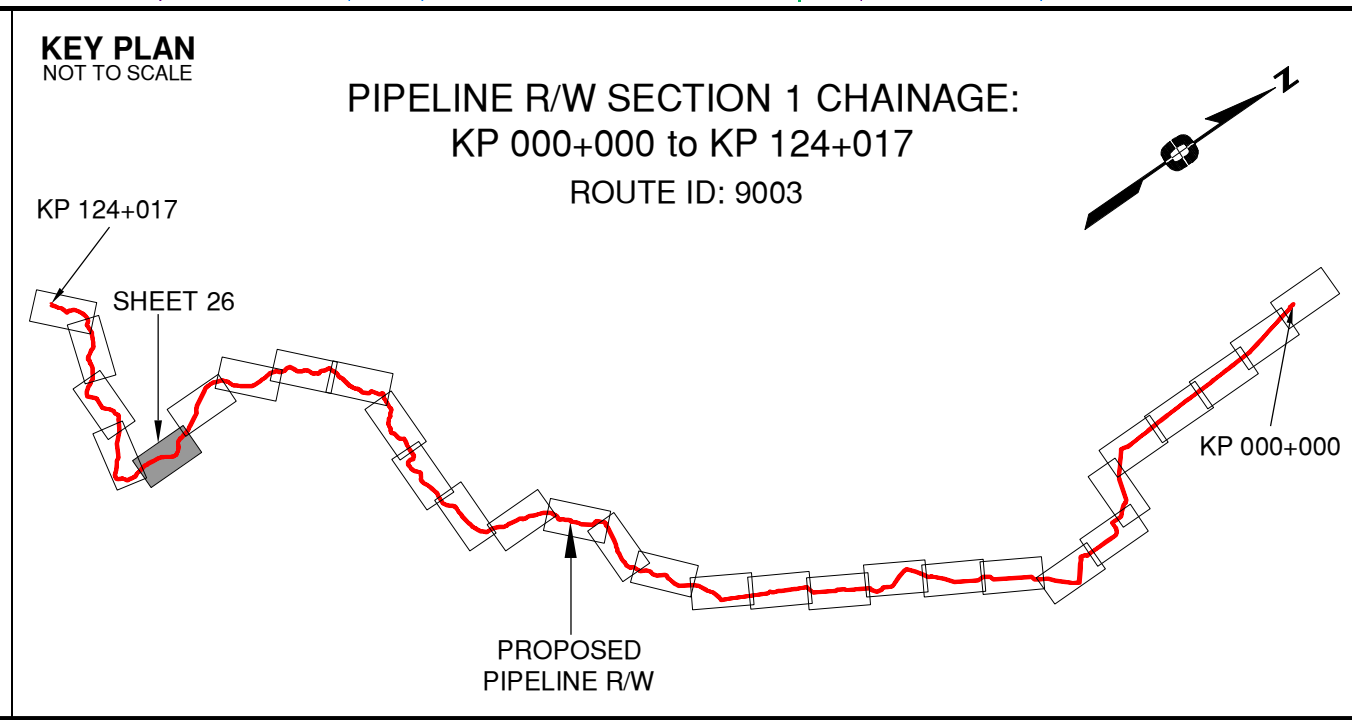


Rev	Revision Description	Date(Y/M/D)	By
0	Original Plan Prepared	2014/09/12	DC
1	Construction Plan Based on Rev.0 (2014/09/12) Except for New Construction Corridor: Shape, Label, Area Table & ePass	2014/12/31	DC

NOTES:

- Co-ordinates are NAD 83 Grid, UTM Zone 9 and Zone 10. Distances shown are in metres and decimals thereof. Chainages are two-dimensional and are on pipeline ditchline. Pipeline segment length derived from ditchline chainages.
- Fault Lines data has been provided from BGC Engineering Inc. Desktop Study dated December 20, 2013.
- Water crossing information has been provided by Stantec. Wetlands data has been provided by Stantec dated August 29, 2014. Freshwater Atlas wetlands outside of construction corridor have been removed from scenery.
- Cutback data is confirmed using information from the Government of BC websites for Forest MapView and MapBC.
- This pipeline section is partially within the Agricultural Land Reserve.
- Field Survey Completed July 15, 2014
- This plan represents the best information available at the time of survey. Focus Surveys and its employees take no responsibility for the location of any underground conduits, pipes, or other facilities whether shown on or omitted from this plan. All underground installations should be located by the respective authorities prior to construction.

LEGEND
Proposed Pipeline R/W shown thus:
Proposed Temp. Workspaces shown thus:
Proposed Log Decks & Storage Sites shown thus:
Right of Way shown thus:
Roads shown thus:
Highway shown thus:
Railway line shown thus:
Seismic line/trail shown thus:
Recreation Tenure shown thus:
Drainages shown thus:
Buried cable shown thus:
Buried pipe shown thus:
Overhead powerline shown thus:
Riparian Reserve Zone shown thus:
Riparian Management Zone shown thus:
Forest Cover Reserve shown thus:
Archaeological site shown thus:
Agricultural Land Reserve bdy shown thus:
Coal Tenure bdy shown thus:
Cutback bdy shown thus:
Fence bdy shown thus:
Fish/Wildlife Reserve bdy shown thus:
Grazing Tenure bdy shown thus:
Mineral Claim bdy shown thus:
Tree Farm Licence shown thus:
Quarry Reserve bdy shown thus:
Ungulate Winter Range bdy shown thus:
Visual Land Inventory shown thus:
Watershed Reserve bdy shown thus:
Wind Tenure bdy shown thus:
Woodlot bdy shown thus:
Fault Line shown thus:
Misc. Reserve/Notation bdy shown thus:
Misc. Licence/Permit bdy shown thus:
Stantec Wetland / Classification shown thus:
Crossings shown thus:
Old Growth Management Area shown thus:
Residences shown thus:
Power Pole shown thus:



APPROVED BY
PROJECT ENGINEER

STATION	DESCRIPTION	STATION	DESCRIPTION
W01115	106+073 Trib to Silver Sands Creek / Non-classified drainage / RRZ = 0 RMZ = 0	N 6156849	E 521459 ILMB
W01114	105+786 Trib to Silver Sands Creek / S4 / RRZ = 0 RMZ = 30	N 6157129	E 521473 ILMB
W02131	105+594 Trib to Silver Sands Creek / S4 / RRZ = 0 RMZ = 30	N 6157321	E 521477 ILMB
W02652	105+588 Trib to Silver Sands Creek / S3 / RRZ = 20 RMZ = 20	N 6157326	E 521477 ILMB
W01113	104+578 Trib to Silver Sands Creek / Non-classified drainage / RRZ = 0 RMZ = 0	N 6158308	E 521664 ILMB
W01112	104+221 Trib to Silver Sands Creek / Non-classified drainage / RRZ = 0 RMZ = 0	N 6158638	E 521859 ILMB
W01111	104+175 Trib to Silver Sands Creek / Non-classified drainage / RRZ = 0 RMZ = 0	N 6158645	E 521865 ILMB
W01110	103+760 Trib to Doonan Creek / Non-classified drainage / RRZ = 0 RMZ = 0	N 6159021	E 522044 ILMB
W01109	103+739 Trib to Doonan Creek / S6 / RRZ = 0 RMZ = 20	N 6159042	E 522045 ILMB
W02152	102+744 Trib to Doonan Creek / S4 / RRZ = 0 RMZ = 30	N 6159743	E 521423 ILMB
W02151	102+562 Trib to Doonan Creek / No visible channel	N 6158896	E 521327 ILMB
W02150	102+106 Trib to Doonan Creek / S4 / RRZ = 0 RMZ = 30	N 6160342	E 521247 ILMB
W02130	101+939 Trib to Doonan Creek / S4 / RRZ = 0 RMZ = 30	N 6160506	E 521213 ILMB
T01073	101+938 Silver Sands Snow Trail / Condition Unknown / REC160647 2	N 6160507	E 521213 ILMB
No.	STATION DESCRIPTION	NAD 83 UTM ZONE 10	OWNER

TABLE OF CROSSINGS

Prince Rupert Gas Transmission Project

TransCanada
In business to deliver

PRINCE RUPERT GAS TRANSMISSION LTD.

PROPOSED VARIABLE WIDTH (28 to 82m) PIPELINE R/W
FROM c-27-1, 94-B-1 TO b-89-C, 93-O-10
(SHEET CHAINAGE: 101+843 TO 106+398)

Unsurveyed Crown Land/Private Land/Crown Land, Peace River District

The intended plot size of this plan is 864mm in width by 560mm in height when plotted at a scale of 1: 5000 (use D size sheet)

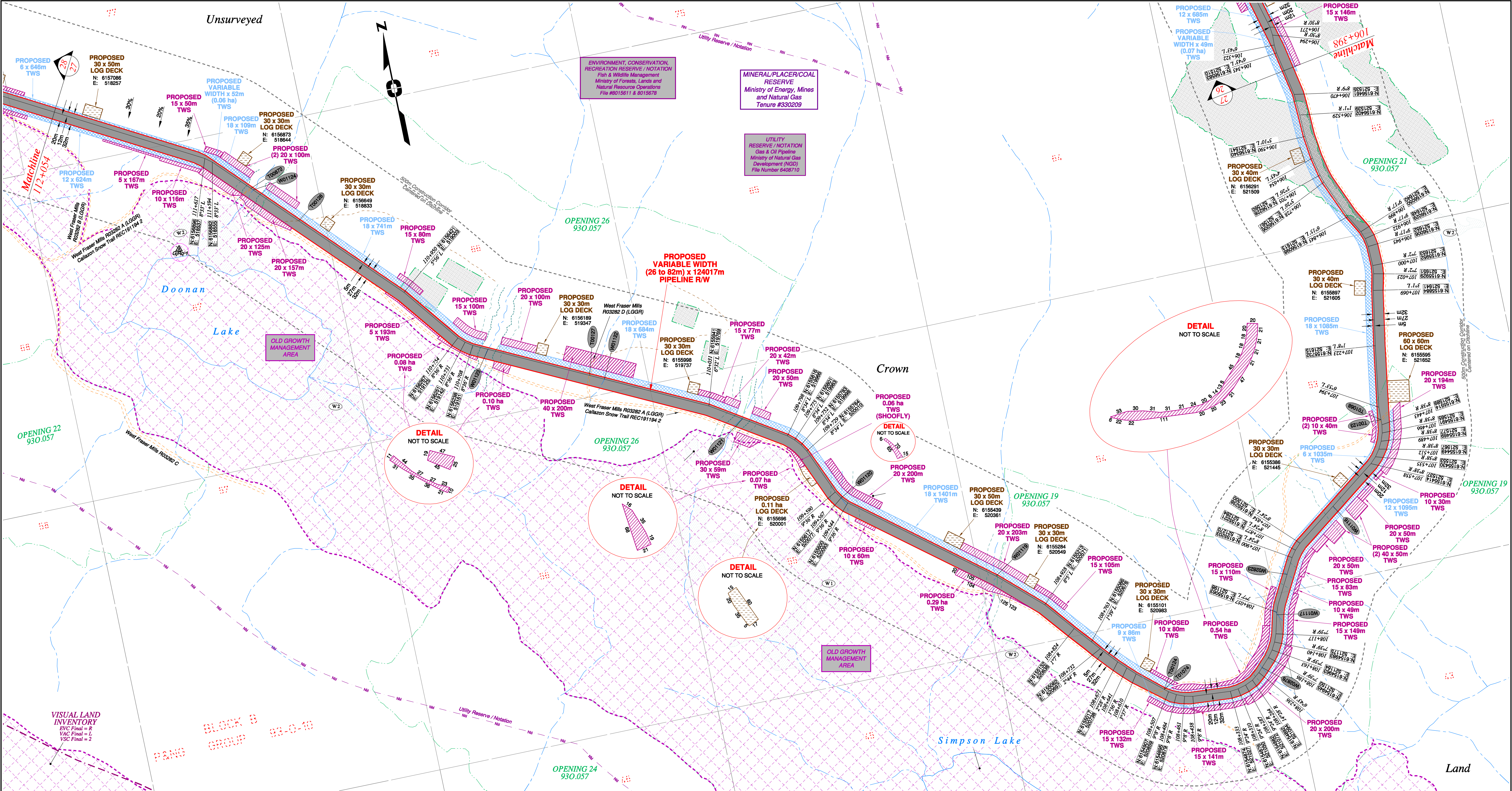
BCGS: 94B.010.020/94A.001/93P.091/93O.056.057.067.068.076.079.080.090.100

Sheet 26 of 30

FOCUS
Focus Surveys (BC) Limited Partnership
10715 - 100th Avenue Fort St. John BC
V1J 1Z3 250.787.0300 www.focus.ca

FOCUS:
AFCE: 130275CP01R1
TCPL: 004776-09-ML-03-0026
ePASS: 10048735

REV. 1

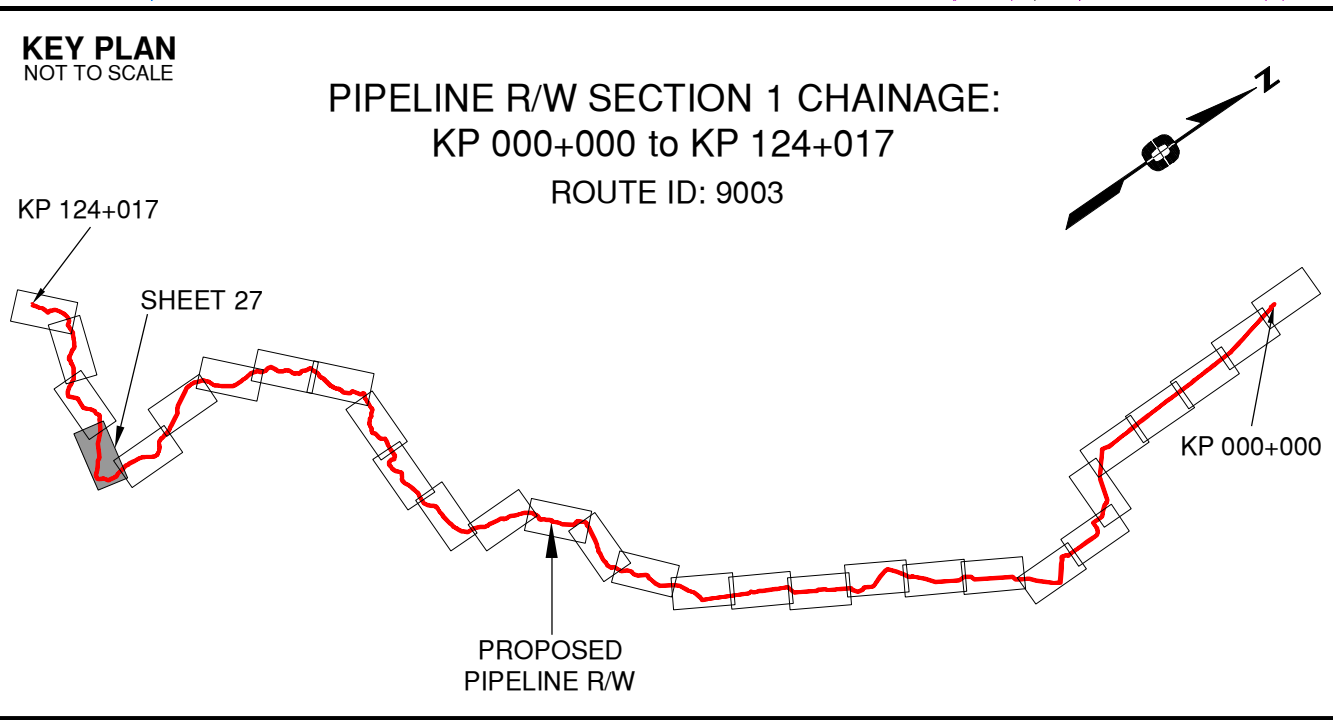


Rev	Revision Description	Date(Y/M/D)	By
0	Original Plan Prepared	2014/09/12	DC
1	Construction Plan Based on Rev.0 (2014/09/12) Except for New Construction Corridor: Shape, Label, Area Table & ePASS	2014/12/31	DC

NOTES:

- Co-ordinates are NAD 83 Grid, UTM Zone 9 and Zone 10. Distances shown are in metres and decimals thereof. Chainages are two-dimensional and are on pipeline ditchline. Pipeline segment length derived from ditchline chainages.
- Fault Lines data has been provided from BGC Engineering Inc. Desktop Study dated December 20, 2013.
- Water crossing information has been provided by Stantec. Wetlands data has been provided by Stantec dated August 29, 2014. Freshwater Atlas wetlands outside of construction corridor have been removed from scenery.
- Cutback data is confirmed using information from the Government of BC websites for Forest Map View and MapBC.
- This pipeline section is partially within the Agricultural Land Reserve.
- Field Survey Completed July 15, 2014
- This plan represents the best information available at the time of survey. Focus Surveys and its employees take no responsibility for the location of any underground conduits, pipes, or other facilities whether shown on or omitted from this plan. All underground installations should be located by the respective authorities prior to construction.

LEGEND
Proposed Pipeline R/W shown thus:
Proposed Temp. Workspaces shown thus:
Proposed Log Decks & Storage Sites shown thus:
Right of Way shown thus:
Roads shown thus:
Highway shown thus:
Railway line shown thus:
Seismic line/trail shown thus:
Recreation Tenure shown thus:
Drainages shown thus:
Buried cable shown thus:
Buried pipe shown thus:
Overhead powerline shown thus:
Riparian Reserve Zone shown thus:
Riparian Management Zone shown thus:
Forest Cover Reserve shown thus:
Archaeological site shown thus:
Agricultural Land Reserve bdy shown thus:
Coal Tenure bdy shown thus:
Cutback bdy shown thus:
Fence bdy shown thus:
Fish/Wildlife Reserve bdy shown thus:
Grazing Tenure bdy shown thus:
Mineral Claim bdy shown thus:
Tree Farm Licence shown thus:
Quarry Reserve bdy shown thus:
Ungulate Winter Range bdy shown thus:
Visual Land Inventory shown thus:
Watershed Reserve bdy shown thus:
Wind Tenure bdy shown thus:
Woodlot bdy shown thus:
Misc. Reserve/Notation bdy shown thus:
Misc. Licence/Permit bdy shown thus:
Riparian Reserve / Classification shown thus:
Crossings shown thus:
Old Growth Management Area shown thus:
Residences shown thus:
Power Pole shown thus:



APPROVED BY
PROJECT ENGINEER

STATION	DESCRIPTION	OWNER
T00872	111+464 Trail / Condition Unknown	N 6156789 E 518645 Crown
W01124	111+456 Trib to Doonan Creek / S3 / RRZ = 20 RMZ = 20	N 6156784 E 518651 ILMB
T00128	111+304 Trail / Condition Unknown	N 6156674 E 518757 Crown
W01123	111+664 Trib to Doonan Creek / S3 / RRZ = 20 RMZ = 20	N 6156219 E 519200 West Fraser Mills Ltd.
T00127	110+372 Forestry Road / LGGR / R03282 D	N 6156091 E 519462 ILMB
W01122	110+330 Trib to Doonan Creek / Non-classified drainage / RRZ = 0 RMZ = 0	N 6156073 E 519500 ILMB
W01121	109+931 Trib to Simpson Lake / S3 / RRZ = 20 RMZ = 20	N 6155888 E 519654 ILMB
W01120	109+567 Trib to Simpson Lake / S4 / RRZ = 0 RMZ = 30	N 6155617 E 520077 ILMB
W01119	109+085 Trib to Simpson Lake / S6 / RRZ = 0 RMZ = 20	N 6155318 E 520455 ILMB
T00124	108+521 Callazon Snow Trail / Condition Unknown / REC191194 2	N 6154916 E 520049 MFLNRO
T01074	108+521 Forestry Road / LGGR / R03282 A	N 6154915 E 520849 West Fraser Mills Ltd.
T00276	108+220 Trib to Pine River / S4 / RRZ = 0 RMZ = 30	N 6154921 E 521217 ILMB
W01117	108+064 Trib to Pine River / No visible channel	N 6155056 E 521196 ILMB
W02823	107+948 Trib to Pine River / S4 / RRZ = 0 RMZ = 30	N 6155160 E 521247 ILMB
W01116	107+716 Trib to Pine River / S4 / RRZ = 0 RMZ = 30	N 6155320 E 521410 ILMB
T00124	107+429 Callazon Snow Trail / Condition Unknown / REC191194 2	N 6155528 E 521589 MFLNRO
T01068	107+429 Forestry Road / LGGR / R03282 A	N 6155528 E 521589 West Fraser Mills Ltd.
No.	STATION DESCRIPTION	NAD 83 UTM ZONE 10 OWNER

TABLE OF CROSSINGS

Prince Rupert Gas Transmission Project

PRINCE RUPERT GAS TRANSMISSION LTD.

PROPOSED VARIABLE WIDTH (28 to 82m) PIPELINE R/W FROM c-27-1, 94-B-1 TO b-89-C, 93-O-10 (SHEET CHAINAGE: 106+398 TO 112+054)

Unsurveyed Crown Land/Private Land/Crown Land, Peace River District

The intended plot size of this plan is 864mm in width by 560mm in height when plotted at a scale of 1: 5000 (use D size sheet)

BCGS: 94B.010.020/94A.001/93P.091/93O.056.057.067.068.076.079.080.090.100

Sheet 27 of 30

FOCUS

Focus Surveys (BC) Limited Partnership

107-100 Avenue Fort St John BC V1J 2Z3 250.787.0300 www.focus.ca

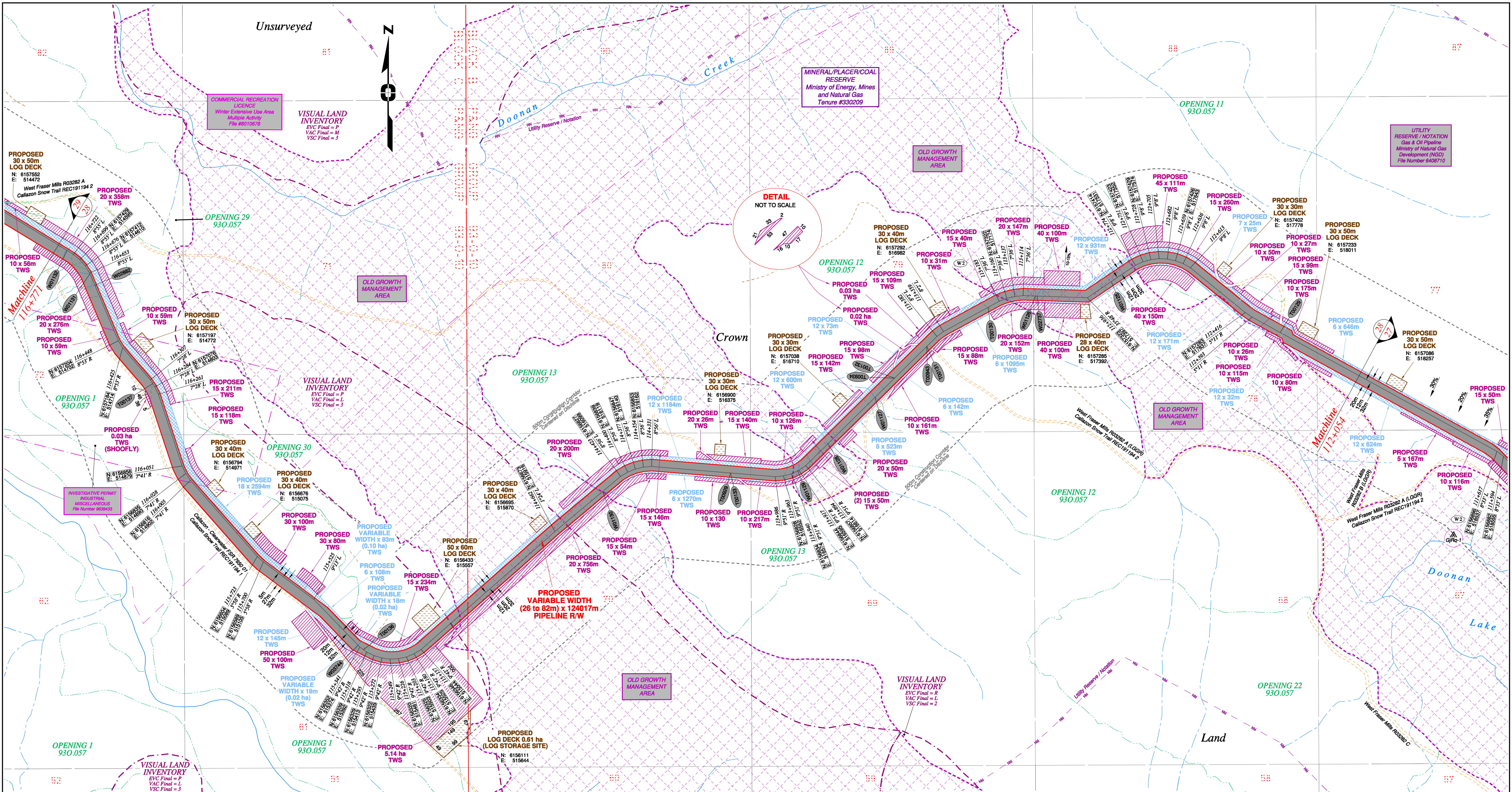
AFCE: 130275CP01R1

TCPL: 500948

ePASS: 004776-09-ML-03-0027

10048735

REV. 1

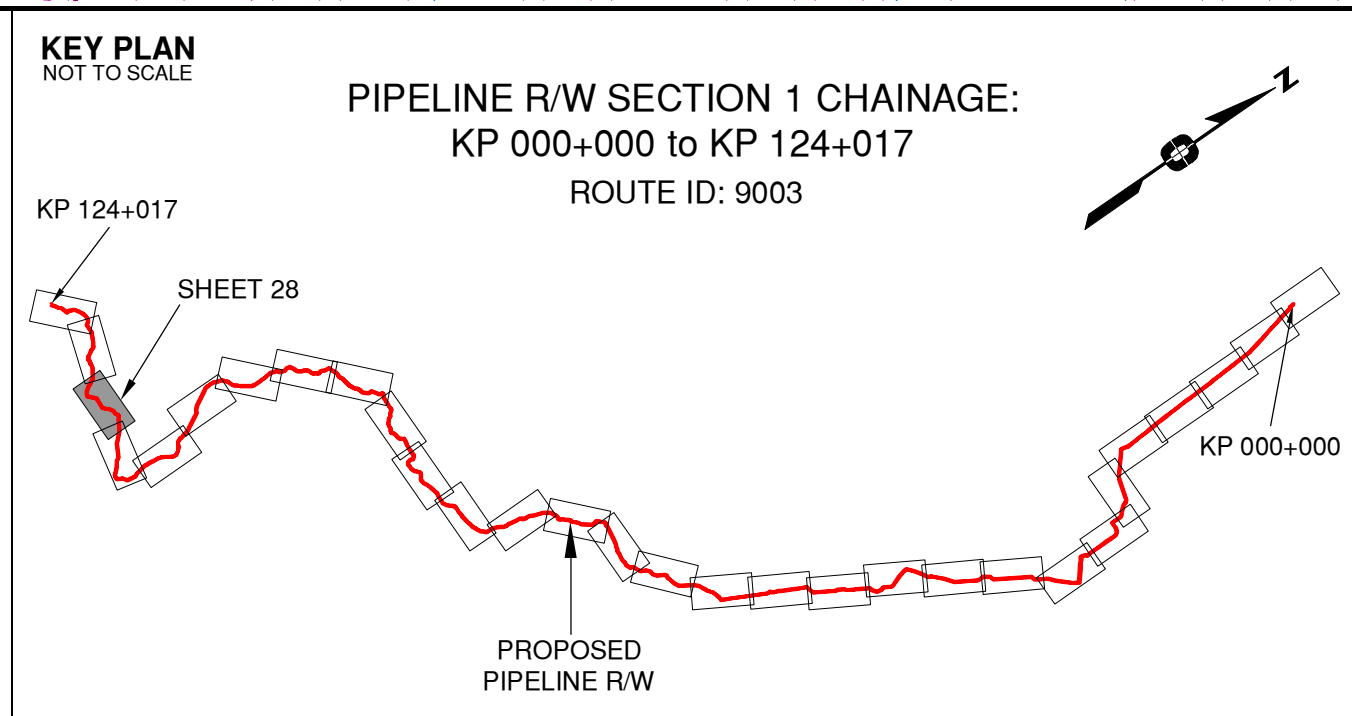


Rev	Revision Description	Date(Y/M/D)	By
0	Original Plan Prepared	2014/09/12	DC
1	Construction Plan Based on Rev.0 (2014/09/12) Except for New Construction Corridor: Shape, Label, Area Table & ePass	2014/12/31	DC

NOTES:

- Co-ordinates are NAD 83 Grid, UTM Zone 9 and Zone 10. Distances shown are in metres and decimals thereof. Chainages are two-dimensional and are on pipeline ditchline. Pipeline segment length derived from ditchline chainages.
- Fault Lines data has been provided from BGC Engineering Inc. Desktop Study dated December 20, 2013.
- Water crossing information has been provided by Stantec. Wetlands data has been provided by Stantec dated August 29, 2014. Freshwater Atlas wetlands outside of construction corridor have been removed from scenery.
- Cutback data is confirmed using information from the Government of BC websites for Forest MapView and MapBC.
- This pipeline section is partially within the Agricultural Land Reserve.
- Field Survey Completed July 15, 2014
- This plan represents the best information available at the time of survey. Focus Surveys and its employees take no responsibility for the location of any underground conduits, pipes, or other facilities whether shown on or omitted from this plan. All underground installations should be located by the respective authorities prior to construction.

LEGEND
Proposed Pipeline R/W shown thus:
Proposed Temp. Workspaces shown thus:
Proposed Log Decks & Storage Sites shown thus:
Right of Way shown thus:
Roads shown thus:
Highway shown thus:
Railway line shown thus:
Seismic line/trail shown thus:
Recreation Tenure shown thus:
Drainages shown thus:
Buried cable shown thus:
Buried pipe shown thus:
Overhead powerline shown thus:
Riparian Reserve Zone shown thus:
Forest Cover Reserve shown thus:
Archaeological site shown thus:
Agricultural Land Reserve shown thus:
Coal Tenure shown thus:
Cutback shown thus:
Fence body shown thus:
Fish/Wildlife Reserve body shown thus:
Grazing Tenure body shown thus:
Mineral Claim body shown thus:
Tree Farm Licence shown thus:
Quarry Reserve body shown thus:
Ungulate Winter Range body shown thus:
Visual Land Inventory shown thus:
Watershed Reserve body shown thus:
Wind Tenure body shown thus:
Woodlot body shown thus:
Fault Line shown thus:
Misc. Reserve/Notation body shown thus:
Misc. Licence/Permit body shown thus:
Stantec Wetland / Classification shown thus:
Crossings shown thus:
Old Growth Management Area shown thus:
Residences shown thus:
Power Pole shown thus:



APPROVED BY
PROJECT ENGINEER

No.	STATION	DESCRIPTION	No.	STATION	DESCRIPTION
W01132	116+743	Trib to Callazon Creek / S6 / RRZ = 0 RMZ = 20	N 6157455	E 514559	ILMB
W01131	116+650	Trib to Callazon Creek / S5 / RRZ = 0 RMZ = 30	N 6157390	E 514623	ILMB
W02682	116+615	Trib to Callazon Creek / S4 / RRZ = 0 RMZ = 30	N 6157358	E 514637	ILMB
T00137	116+295	Trail / Condition Unknown	N 6157385	E 514798	Crown
W03744	115+349	Trib to Doonan Creek	N 6156357	E 515368	ILMB
T00136	115+329	Trail / Condition Unknown	N 6156345	E 515384	Crown
W01130	114+488	Trib to Doonan Creek / Non-classified drainage / RRZ = 0 RMZ = 0	N 6156785	E 516049	ILMB
T00133	114+110	Forestry Road / LGGR / R03282 A	N 6156836	E 516405	West Fraser Mills Ltd.
T00929	114+110	Callazon Snow Trail / Condition Unknown / REC191194.2	N 6156836	E 516405	MFLNRO
W01129	113+921	Trib to Doonan Creek / S5 / RRZ = 0 RMZ = 30	N 6156842	E 516892	ILMB
W01128	113+807	Trib to Doonan Creek / S5 / RRZ = 0 RMZ = 30	N 6156918	E 516676	ILMB
W01127	113+624	Trib to Doonan Creek / S5 / RRZ = 0 RMZ = 30	N 6157046	E 516807	ILMB
T00132	113+547	Forestry Road / LGGR / R03282 A	N 6157100	E 516861	West Fraser Mills Ltd.
T00934	113+547	Callazon Snow Trail / Condition Unknown / REC191194.2	N 6157100	E 516861	MFLNRO
T00131	113+421	Forestry Road / LGGR / R03282 A	N 6157188	E 516951	West Fraser Mills Ltd.
T00943	113+421	Callazon Snow Trail / Condition Unknown / REC191194.2	N 6157188	E 516951	MFLNRO
T00130	113+218	Trail / Condition Unknown	N 6157297	E 517121	Crown
W01126	113+080	Trib to Doonan Creek / S6 / RRZ = 0 RMZ = 20	N 6157328	E 517253	ILMB
W02737	113+075	Trib to Doonan Creek / S4 / RRZ = 0 RMZ = 30	N 6157328	E 517258	ILMB
W01125	112+855	Trib to Doonan Creek / S5 / RRZ = 0 RMZ = 30	N 6157368	E 517464	ILMB
T00129	112+304	Forestry Road / LGGR / R03282 B	N 6157227	E 517934	West Fraser Mills Ltd.
No.	STATION	DESCRIPTION	NAD 83 UTM ZONE 10	OWNER	

TABLE OF CROSSINGS

Prince Rupert Gas Transmission Project

PRINCE RUPERT GAS TRANSMISSION LTD.

PROPOSED VARIABLE WIDTH (28 to 82m) PIPELINE R/W FROM c-27-1, 94-B-1 TO b-89-C, 93-O-10 (SHEET CHAINAGE: 112+054 TO 116+771)

Unsurveyed Crown Land/Private Land/Crown Land, Peace River District

The intended plot size of this plan is 864mm in width by 560mm in height when plotted at a scale of 1: 5000 (use D size sheet)

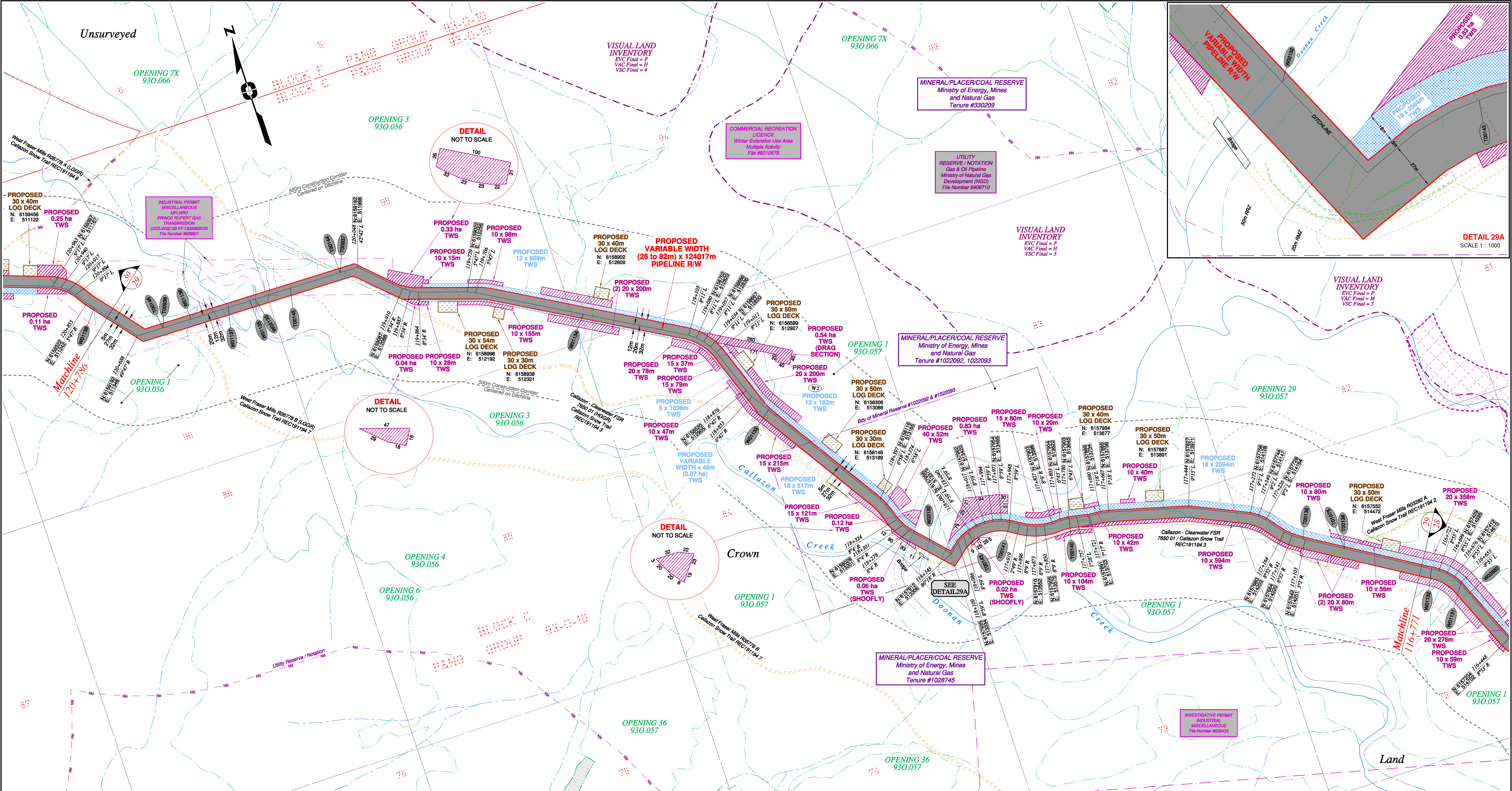
BCGS: 94B.010.020/94A.001/93P.091/93O.056.057.067.068.078.079.080.090.100

Sheet 28 of 30

FOCUS Focus Surveys (BC) Limited Partnership 10715 - 100th Avenue Fort St. John BC V1J 1Z3 250.757.0300 www.focus.ca

FOCUS AFE: 130275CP01R1 TCPL: 004776-09-ML-03-0028 ePASS: 10048735

REV. 1

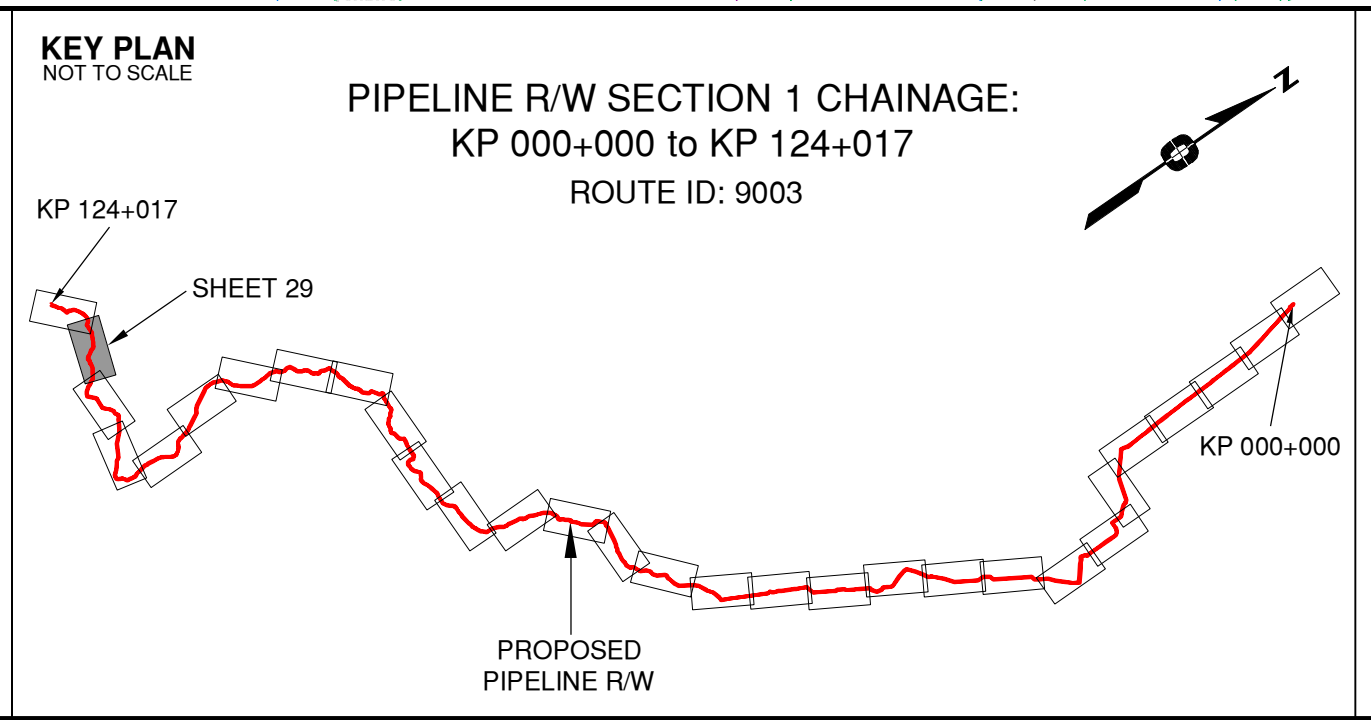


Rev	Revision Description	Date(Y/M/D)	By
0	Original Plan Prepared	2014/09/12	DC
1	Construction Plan Based on Rev.0 (2014/09/12) Except for New Construction Corridor: Shape, Label, Area Table & ePass	2014/12/31	DC

NOTES:

- Co-ordinates are NAD 83 Grid, UTM Zone 9 and Zone 10. Distances shown are in metres and decimals thereof. Chainages are two-dimensional and are on pipeline ditchline. Pipeline segment length derived from ditchline chainages.
- Fault Lines data has been provided from BGC Engineering Inc. Desktop Study dated December 20, 2013.
- Water crossing information has been provided by Stattec. Wetlands data has been provided by Stattec dated August 29, 2014. Freshwater Atlas wetlands outside of construction corridor have been removed from scenery.
- Cutblock data is confirmed using information from the Government of BC websites for Forest MapView and MapBC.
- This pipeline section is partially within the Agricultural Land Reserve.
- Field Survey Completed July 15, 2014
- This plan represents the best information available at the time of survey. Focus Surveys and its employees take no responsibility for the location of any underground conduits, pipes, or other facilities whether shown on or omitted from this plan. All underground installations should be located by the respective authorities prior to construction.

LEGEND
Proposed Pipeline R/W shown thus:
Proposed Temp. Workspaces shown thus:
Proposed Log Decks & Storage Sites shown thus:
Right of Way shown thus:
Roads shown thus:
Highway shown thus:
Railway line shown thus:
Seismic line/trail shown thus:
Recreation Tenure shown thus:
Drainages shown thus:
Buried cable shown thus:
Buried pipe shown thus:
Overhead powerline shown thus:
Stattec Wetland / Classification shown thus:
Riparian Reserve Zone shown thus:
Forest Cover Reserve shown thus:
Archaeological site shown thus:
Agricultural Land Reserve shown thus:
Coal Tenure shown thus:
Cutblock body shown thus:
Fence body shown thus:
Fish/Wildlife Reserve body shown thus:
Grazing Tenure body shown thus:
Mineral Claim body shown thus:
Tree Farm Licence shown thus:
Quarry Reserve body shown thus:
Ungulate Winter Range body shown thus:
Visual Land Inventory shown thus:
Watershed Reserve body shown thus:
Wind Tenure body shown thus:
Woodlot body shown thus:
Fault Line shown thus:
Misc. Reserve/Notation body shown thus:
Misc. Licence/Permit body shown thus:
Stattec Wetland / Classification shown thus:
Crossings shown thus:
Old Growth Management Area shown thus:
Residences shown thus:
Power Pole shown thus:



APPROVED BY

PROJECT ENGINEER

STATION	DESCRIPTION	OWNER
T00146	120+614 Forestry Road / LGRR / R06776 B	N 6159191 E 511422 West Fraser Mills Ltd.
T00938	120+614 Callazon Snow Trail / Condition Unknown / REC191194.7	N 6159191 E 511422 MLNRO
W01136	120+532 Trib to Callazon Creek / No visible channel	N 6159190 E 511504 ILMB
W01137	120+424 Callazon Creek / S2 / RRZ = 30 RMZ = 20	N 6159188 E 511612 ILMB
W01135	120+361 Callazon Creek / S4 / RRZ = 0 RMZ = 30	N 6159187 E 511675 ILMB
W02133	120+346 Trib Callazon Creek	N 6159187 E 511690 ILMB
T00145	120+244 Trail / Condition Unknown	N 6159185 E 511792 Crown
T00144	120+099 Forestry Service Road (Callazon Clearwater) / FSR 7650 01 / HGGR	N 6159183 E 511937 BC Timber Sales
T00937	120+099 Callazon Snow Trail / Condition Unknown / REC191194.3	N 6159183 E 511937 MLNRO
W01134	119+402 Trib to Callazon Creek / S5 / RRZ = 0 RMZ = 30	N 6158963 E 512542 ILMB
W01133	119+395 Trib to Callazon Creek / S6 / RRZ = 0 RMZ = 20	N 6158450 E 512348 ILMB
W02132	118+214 Doonan Creek / S1 / RRZ = 50 RMZ = 20	N 6157963 E 513259 ILMB
T00143	118+071 Trail / Condition Unknown	N 6157953 E 513368 Crown
T00141	117+946 Trail / Condition Unknown	N 6157944 E 513488 Crown
T00140	117+777 Trail / Condition Unknown	N 6157902 E 513647 Crown
T00139	117+110 Trail / Condition Unknown	N 6157646 E 514245 Crown
T00138	116+991 Forestry Road / LGRR / R03282 A	N 6157584 E 514347 West Fraser Mills Ltd.
T01075	116+991 Callazon Snow Trail / Condition Unknown / REC191194.2	N 6157584 E 514347 MLNRO
No.	STATION DESCRIPTION	NAD 83 UTM ZONE 10 OWNER

TABLE OF CROSSINGS

Prince Rupert Gas Transmission Project

PRINCE RUPERT GAS TRANSMISSION LTD.

PROPOSED VARIABLE WIDTH (28 to 82m) PIPELINE R/W FROM c-27-1, 94-B-1 TO b-89-C, 93-O-10 (SHEET CHAINAGE: 116+771 TO 120+786)

Unsurveyed Crown Land/Private Land/Crown Land, Peace River District

The intended plot size of this plan is 864mm in width by 560mm in height when plotted at a scale of 1: 5000 (use D size sheet)

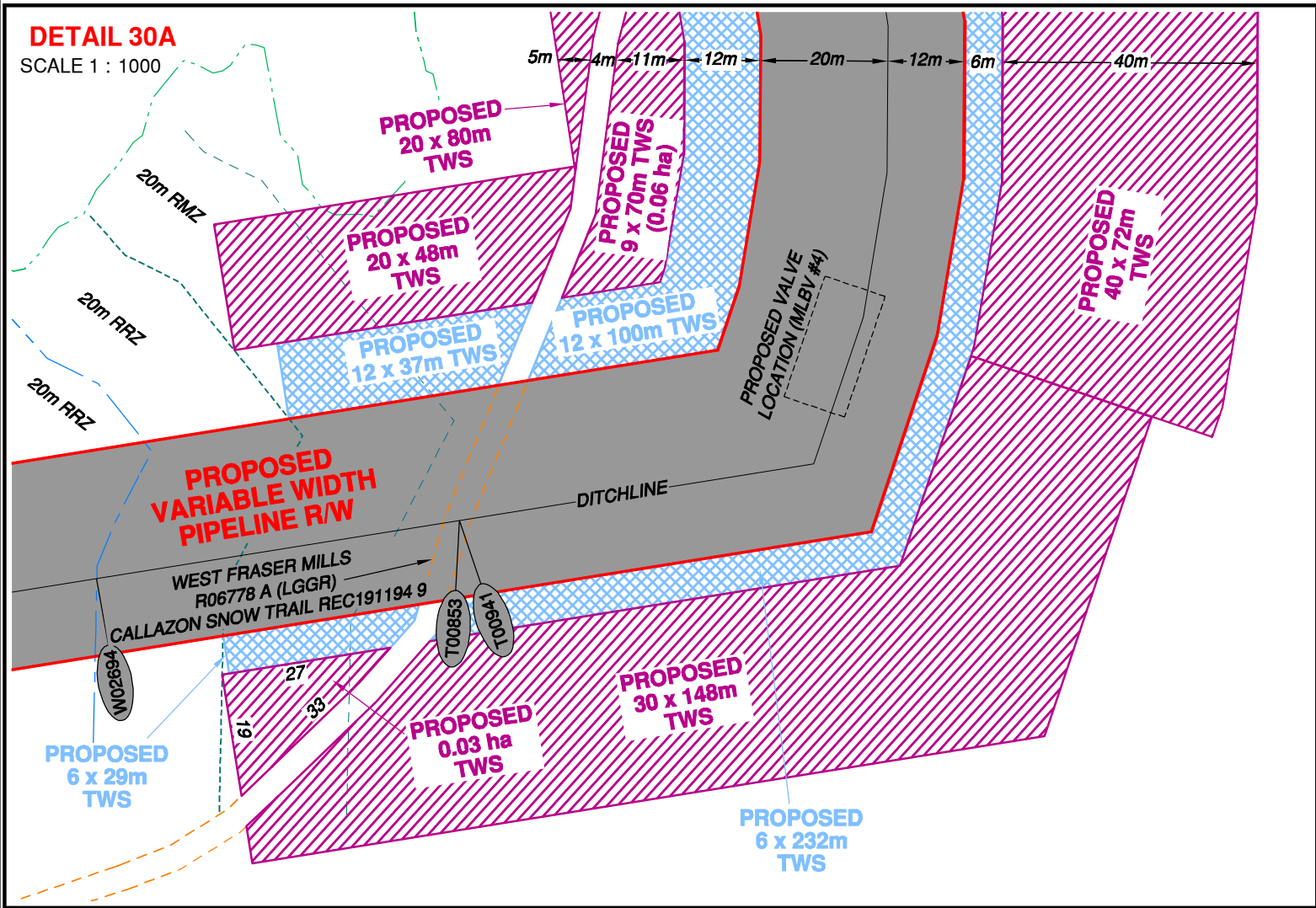
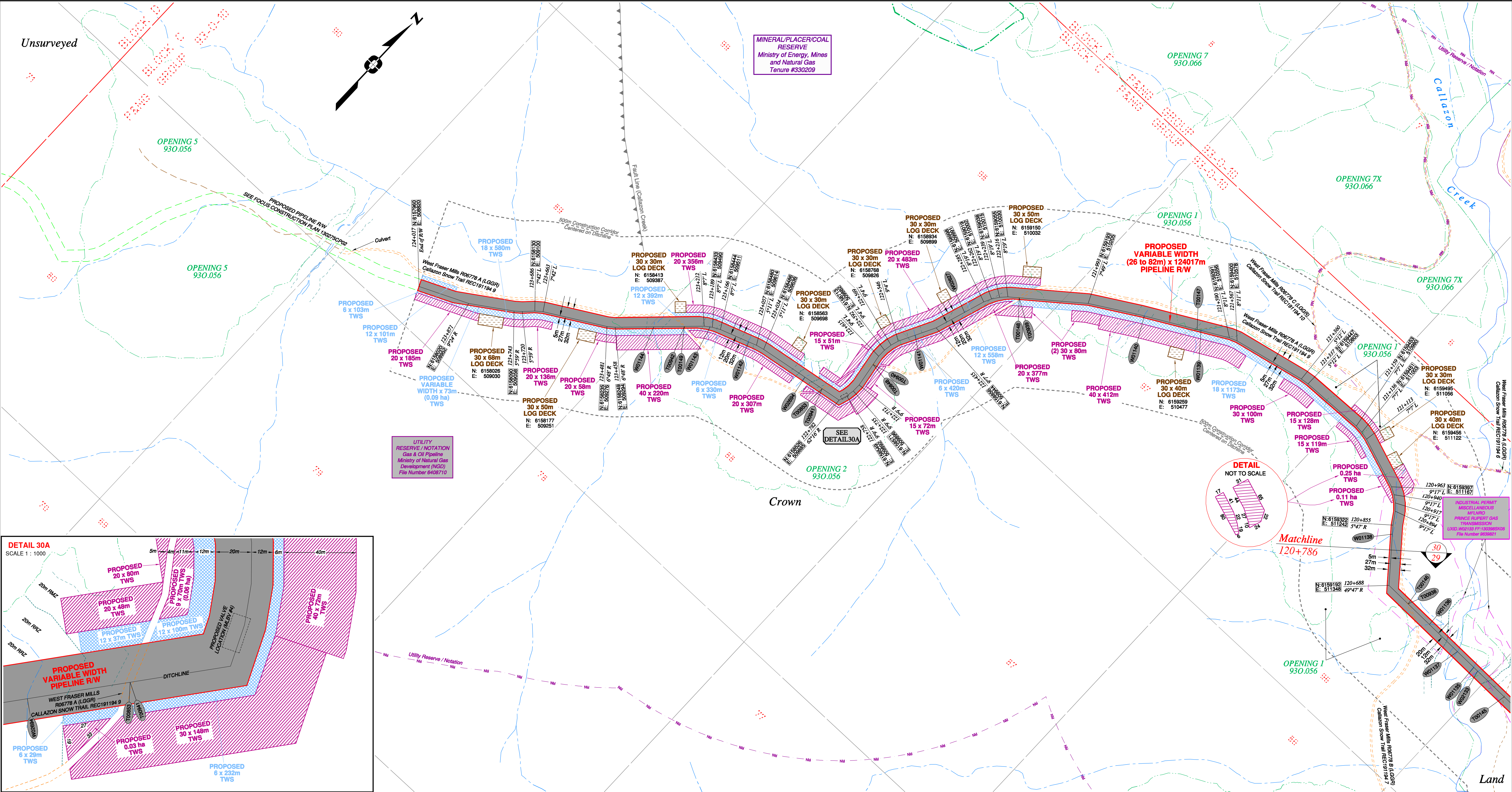
BCGS: 94B.010.020/94A.001/93P.091/93O.056.057.067.068.076.079.080.090.100

Sheet 29 of 30

FOCUS Focus Surveys (BC) Limited Partnership 10710 - 100th Avenue Fort St. John BC V1J 1Z3 250.757.0300 www.focus.ca

FOCUS: 130275CP01R1 500948
AFE: 004776-09-ML-03-0029
TCPL: 10048735
ePASS:

REV. 1

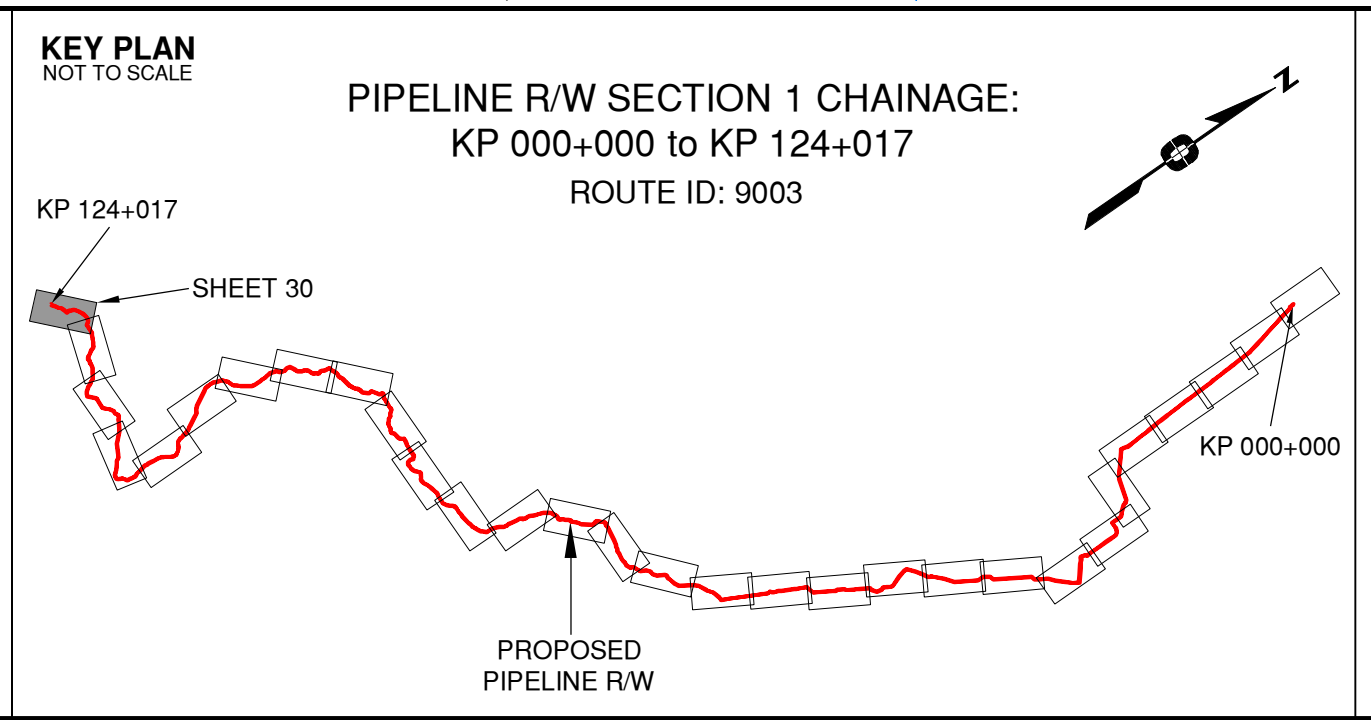


Rev	Revision Description	Date(Y/M/D)	By
0	Original Plan Prepared	2014/09/12	DC
1	Construction Plan Based on Rev.0 (2014/09/12) Except for New Construction Corridor: Shape, Label, Area Table & ePass	2014/12/31	DC

NOTES:

- Co-ordinates are NAD 83 Grid, UTM Zone 9 and Zone 10. Distances shown are in metres and decimals thereof. Chainages are two-dimensional and are on pipeline ditchline. Pipeline segment length derived from ditchline chainages.
- Fault Lines data has been provided from BGC Engineering Inc. Desktop Study dated December 20, 2013.
- Water crossing information has been provided by Stantec. Wetlands data has been provided by Stantec dated August 29, 2014. Freshwater Atlas wetlands outside of construction corridor have been removed from scenery.
- Cutblock data is confirmed using information from the Government of BC websites for Forest MapView and MapBC.
- This pipeline section is partially within the Agricultural Land Reserve.
- Field Survey Completed July 15, 2014
- This plan represents the best information available at the time of survey. Focus Surveys and its employees take no responsibility for the location of any underground conduits, pipes, or other facilities whether shown on or omitted from this plan. All underground installations should be located by the respective authorities prior to construction.

LEGEND
Proposed Pipeline R/W shown thus:
Proposed Temp. Workspaces shown thus:
Proposed Log Decks & Storage Sites shown thus:
Right of Way shown thus:
Roads shown thus:
Highway shown thus:
Railway line shown thus:
Seismic line/trail shown thus:
Recreation Tenure shown thus:
Drainages shown thus:
Buried cable shown thus:
Buried pipe shown thus:
Overhead powerline shown thus:
Stantec Wetland / Classification shown thus:
Riparian Reserve Zone shown thus:
Riparian Management Zone shown thus:
Forest Cover Reserve shown thus:
Archaeological site shown thus:
Agricultural Land Reserve bdy shown thus:
Coal Tenure bdy shown thus:
Cutblock bdy shown thus:
Fence bdy shown thus:
Fish/Wildlife Reserve bdy shown thus:
Grazing Tenure bdy shown thus:
Mineral Claim bdy shown thus:
Tree Farm Licence shown thus:
Quarry Reserve bdy shown thus:
Ungulate Winter Range bdy shown thus:
Visual Land Inventory shown thus:
Watershed Reserve bdy shown thus:
Wind Tenure bdy shown thus:
Woodlot bdy shown thus:
Fault Line shown thus:
Misc. Reserve/Notation bdy shown thus:
Misc. Licence/Permit bdy shown thus:
Stantec Wetland / Classification shown thus:
Crossings shown thus:
Old Growth Management Area shown thus:
Residences shown thus:
Power Pole shown thus:



APPROVED BY
PROJECT ENGINEER

STATION	DESCRIPTION	OWNER
W01144	123+351	Trib to Callazon Creek / S6 / RRZ = 0 RMZ = 20
T00942	123+267	Callazon Snow Trail / Condition Unknown / REC191194.9
T00149	123+267	Forestry Road / LGGR / R06778 A
W01143	123+196	Trib to Callazon Creek / S6 / RRZ = 0 RMZ = 20
W01142	123+081	Trib to Callazon Creek / S6 / RRZ = 0 RMZ = 20
W02694	122+896	Trib to Callazon Creek / S3 / RRZ = 20 RMZ = 20
T00941	122+839	Callazon Snow Trail / Condition Unknown / REC191194.9
T00853	122+839	Forestry Road / LGGR / R06778 A
T00940	122+643	Callazon Snow Trail / Condition Unknown / REC191194.9
T00948	122+643	Forestry Road / LGGR / R06778 A
W01141	122+497	Trib to Callazon Creek / S6 / RRZ = 0 RMZ = 20
W02627	122+345	Trib to Callazon Creek / S4 / RRZ = 0 RMZ = 30
T00939	122+184	Callazon Snow Trail / Condition Unknown / REC191194.9
T00148	122+184	Forestry Road / LGGR / R06778 A
W01140	121+833	Trib to Callazon Creek / S6 / RRZ = 0 RMZ = 20
T00147	121+660	Trail / Condition Unknown
W01139	121+653	Trib to Callazon Creek / S4 / RRZ = 0 RMZ = 30
W01138	120+830	Trib to Callazon Creek / No visible channel
No.	STATION	DESCRIPTION

Prince Rupert Gas Transmission Project

PRINCE RUPERT GAS TRANSMISSION LTD.

PROPOSED VARIABLE WIDTH (28 to 82m) PIPELINE R/W FROM c-27-I, 94-B-1 TO b-89-C, 93-O-10 (SHEET CHAINAGE: 120+786 TO 124+017)

Unsurveyed Crown Land/Private Land/Crown Land, Peace River District

The intended plot size of this plan is 864mm in width by 560mm in height when plotted at a scale of 1: 5000 (use D size sheet)

BCGS: 94B.010.020/94A.001/93P.091/93O.056/057.067.068.078.079.080.090.100

Sheet 30 of 30

FOCUS: 130275CP01R1
AF: 500948
TCPL: 004776-09-ML-03-0030
ePASS: 10048735

REV. 1

STATION	DESCRIPTION	OWNER
W01144	123+351	Trib to Callazon Creek / S6 / RRZ = 0 RMZ = 20
T00942	123+267	Callazon Snow Trail / Condition Unknown / REC191194.9
T00149	123+267	Forestry Road / LGGR / R06778 A
W01143	123+196	Trib to Callazon Creek / S6 / RRZ = 0 RMZ = 20
W01142	123+081	Trib to Callazon Creek / S6 / RRZ = 0 RMZ = 20
W02694	122+896	Trib to Callazon Creek / S3 / RRZ = 20 RMZ = 20
T00941	122+839	Callazon Snow Trail / Condition Unknown / REC191194.9
T00853	122+839	Forestry Road / LGGR / R06778 A
T00940	122+643	Callazon Snow Trail / Condition Unknown / REC191194.9
T00948	122+643	Forestry Road / LGGR / R06778 A
W01141	122+497	Trib to Callazon Creek / S6 / RRZ = 0 RMZ = 20
W02627	122+345	Trib to Callazon Creek / S4 / RRZ = 0 RMZ = 30
T00939	122+184	Callazon Snow Trail / Condition Unknown / REC191194.9
T00148	122+184	Forestry Road / LGGR / R06778 A
W01140	121+833	Trib to Callazon Creek / S6 / RRZ = 0 RMZ = 20
T00147	121+660	Trail / Condition Unknown
W01139	121+653	Trib to Callazon Creek / S4 / RRZ = 0 RMZ = 30
W01138	120+830	Trib to Callazon Creek / No visible channel
No.	STATION	DESCRIPTION

TABLE OF CROSSINGS