

Proposed Routing - Section 1

- OGC Application Plan Viewports
- KP Marker
- Proposed Routing
- Highway
- Paved Road
- Highgrade Gravel Road
- Lake / River
- First Nations Reserve
- Municipality

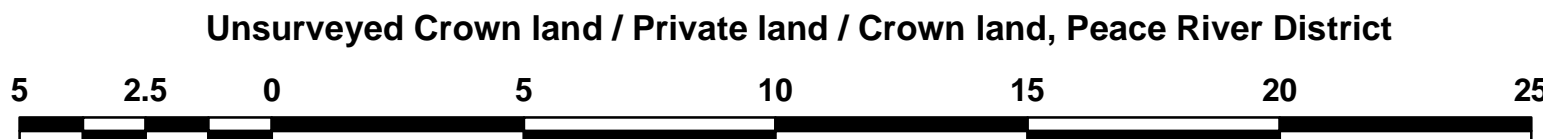
DISCLAIMER: All rights reserved. This map contains confidential and proprietary information. Data contained herein is compiled and confirmed from many sources (private and public), including (but not limited to) Forest MapView and iMapBC. It is subject to change without notification and is provided on an "as is" basis. Focus Surveys (BC) Limited Partnership and its employees take no responsibility for the accuracy or completeness of this information. Content should be reviewed and verified by users.

Prince Rupert
Gas Transmission Project



PRINCE RUPERT GAS TRANSMISSION LTD.

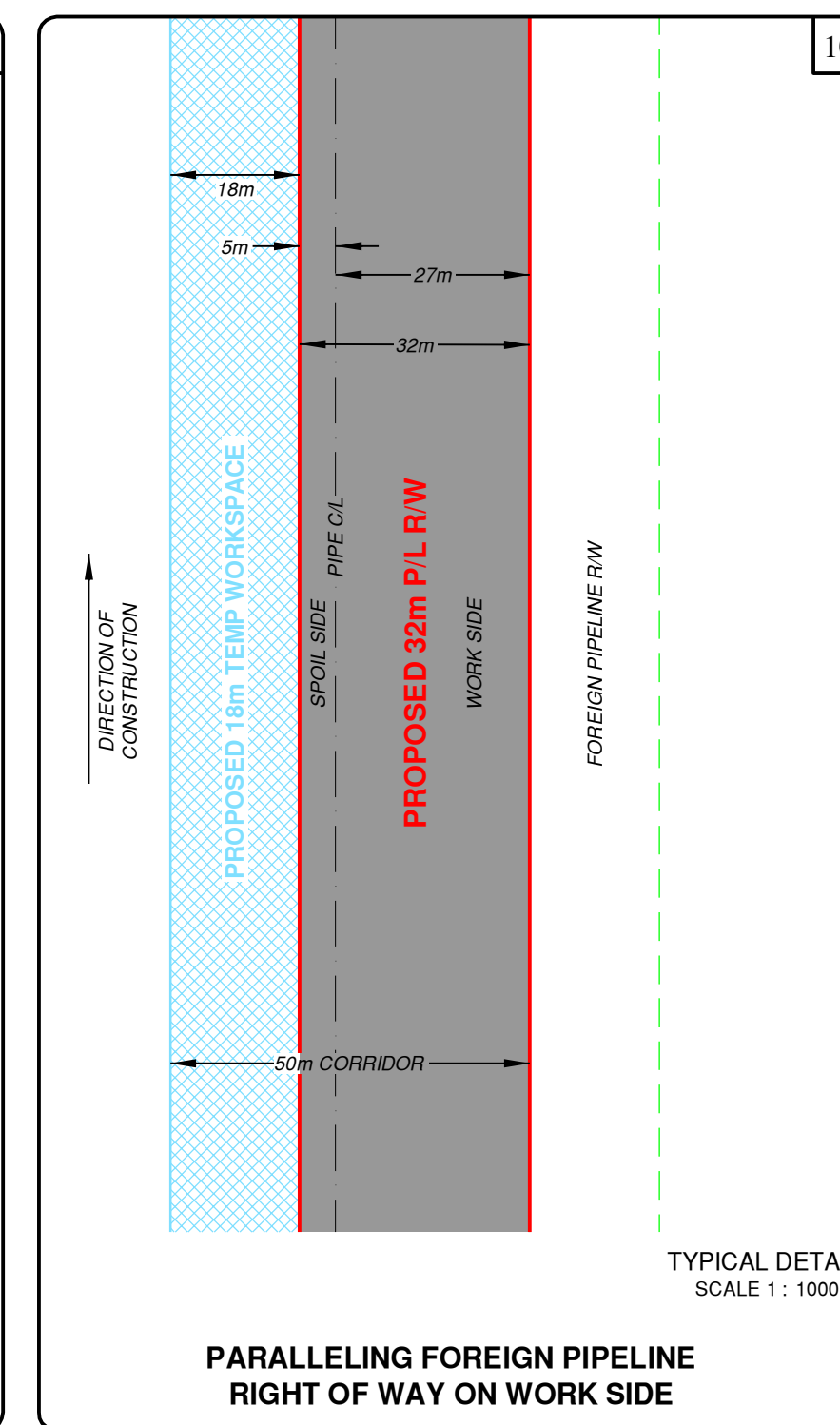
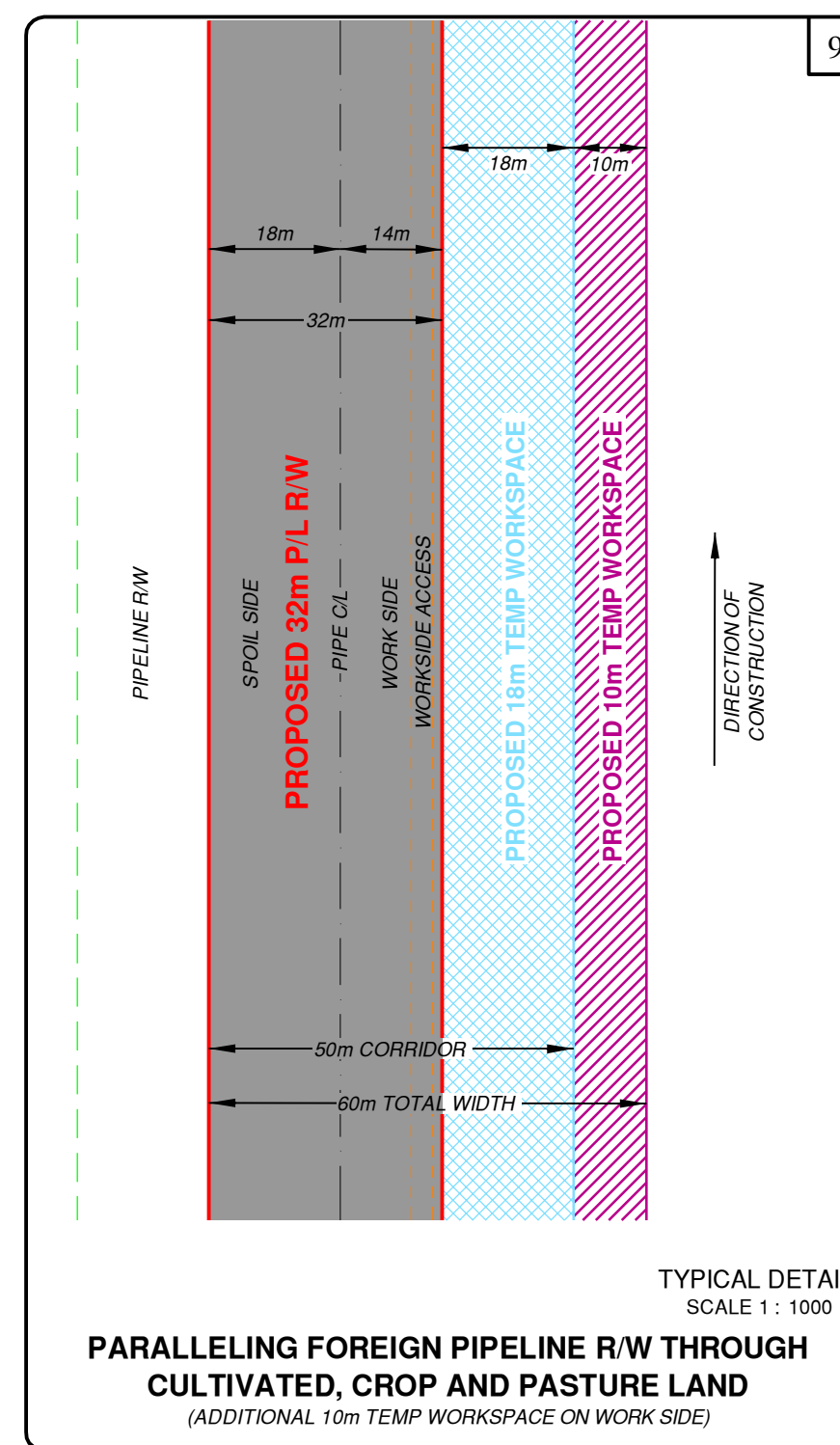
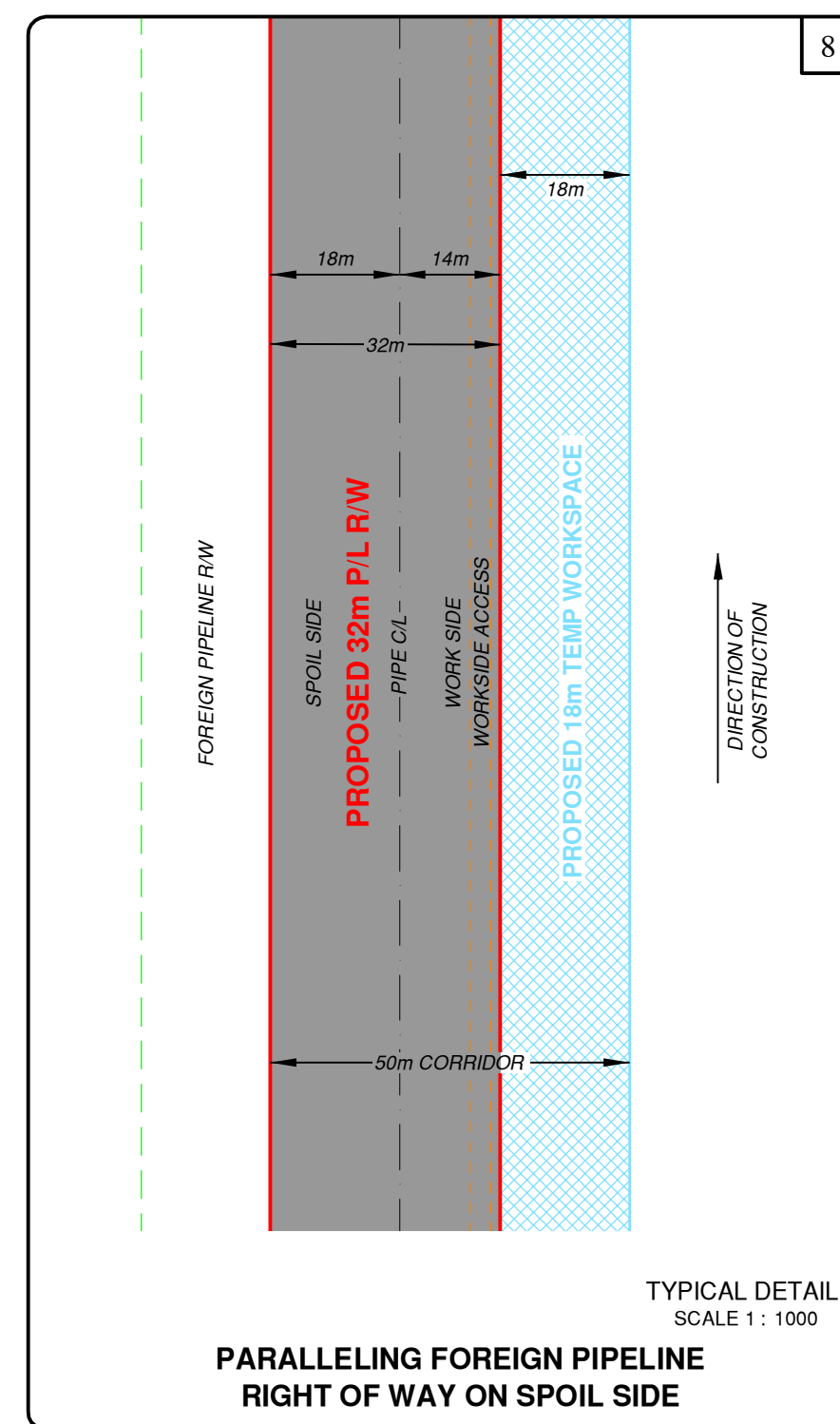
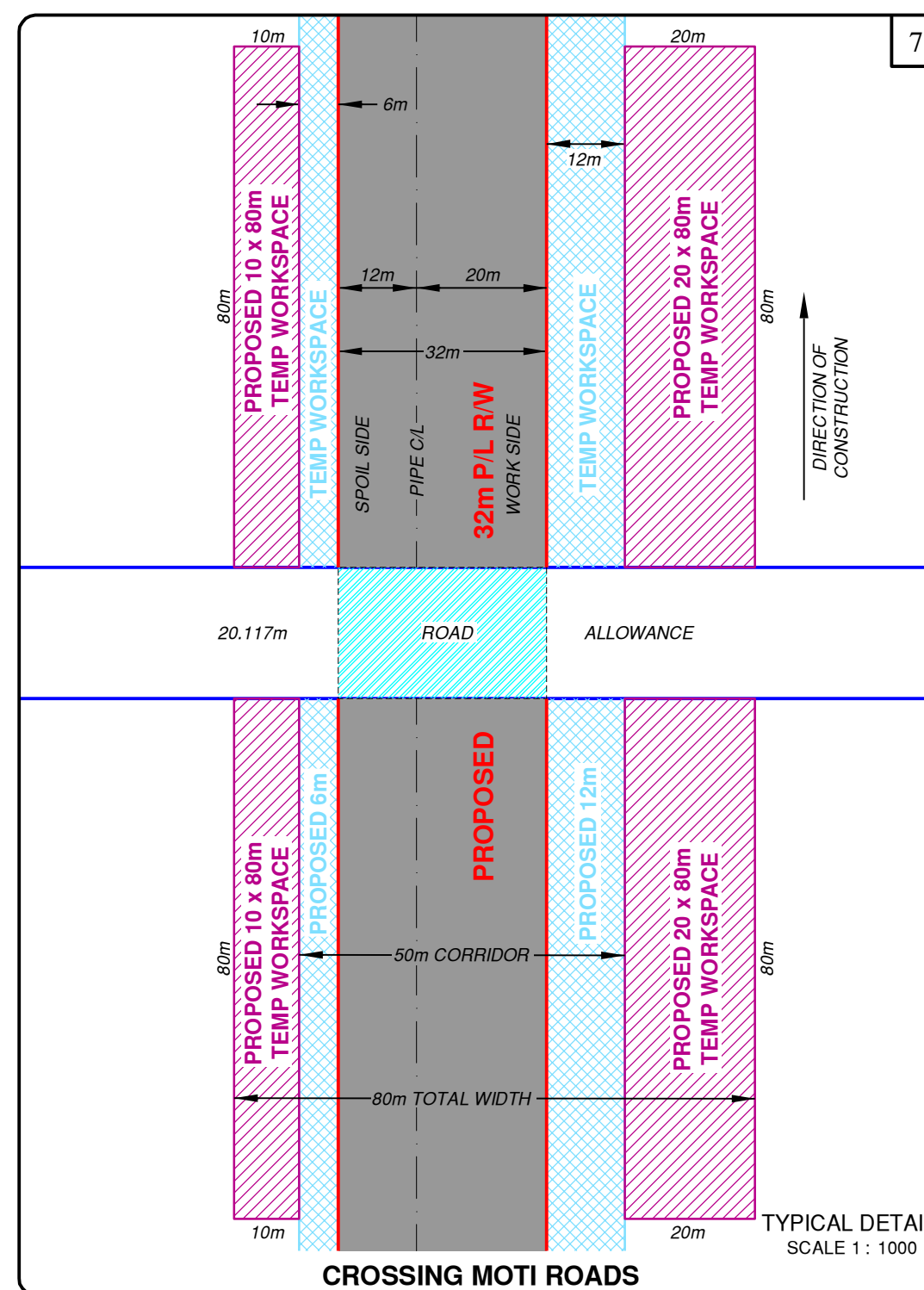
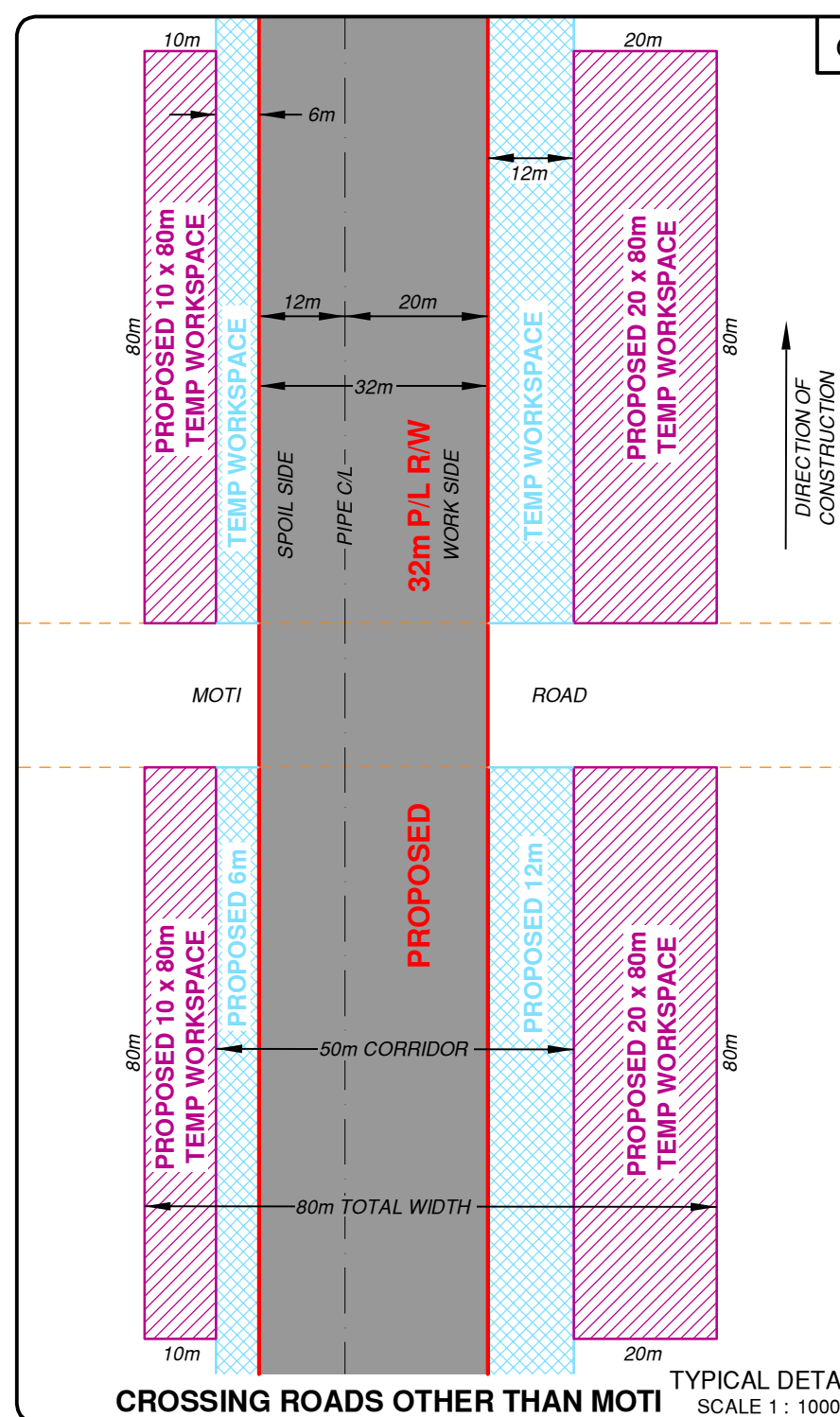
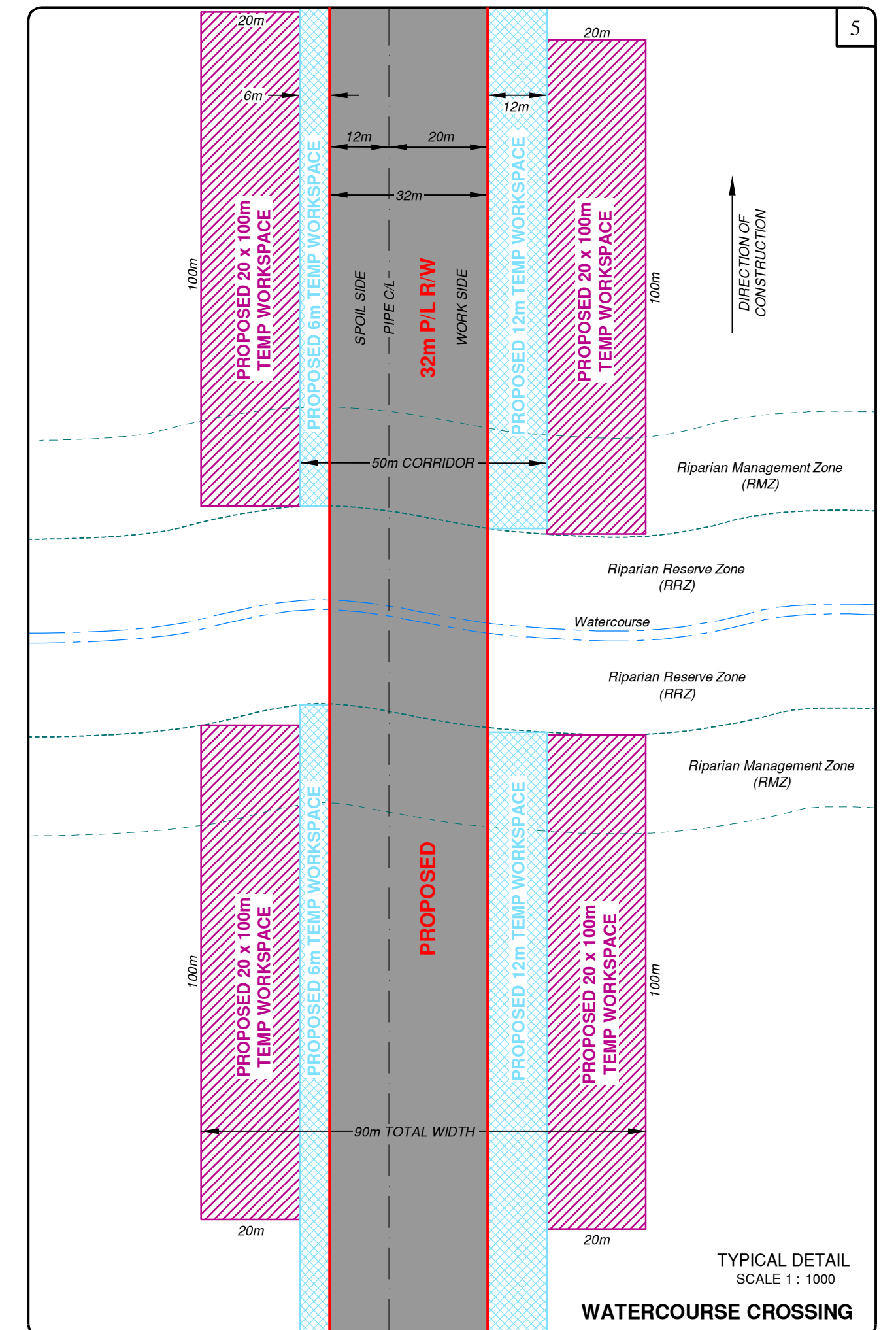
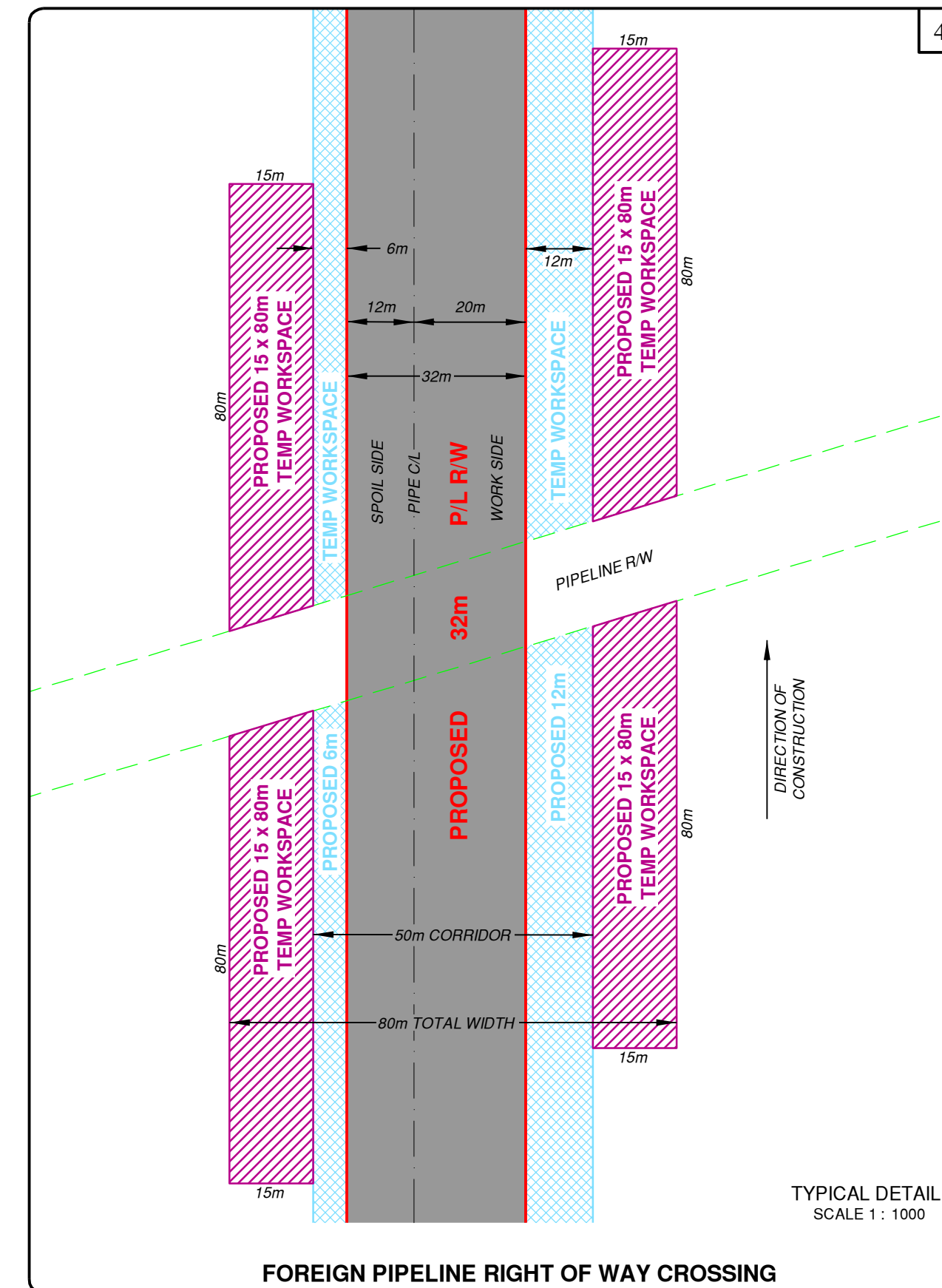
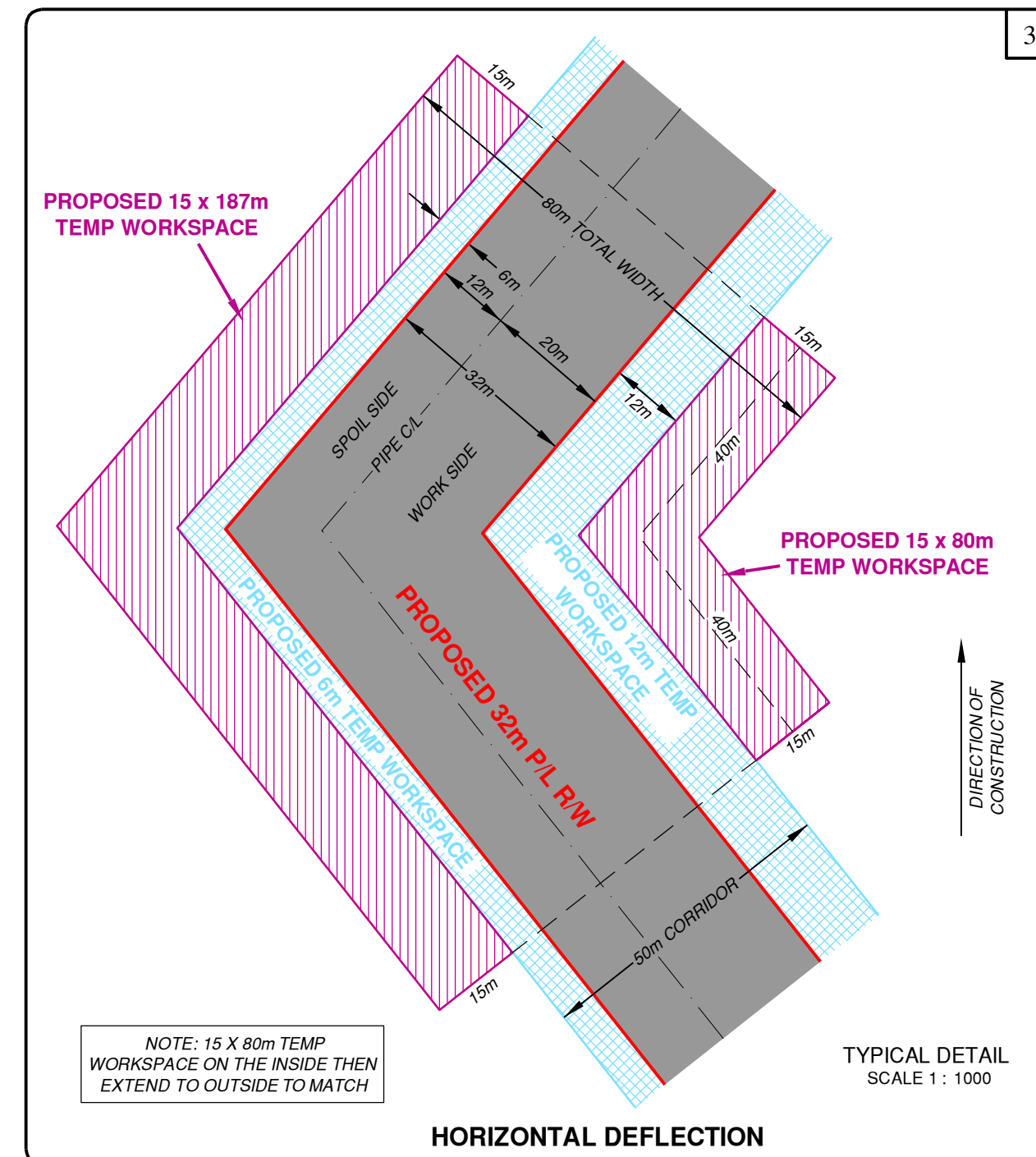
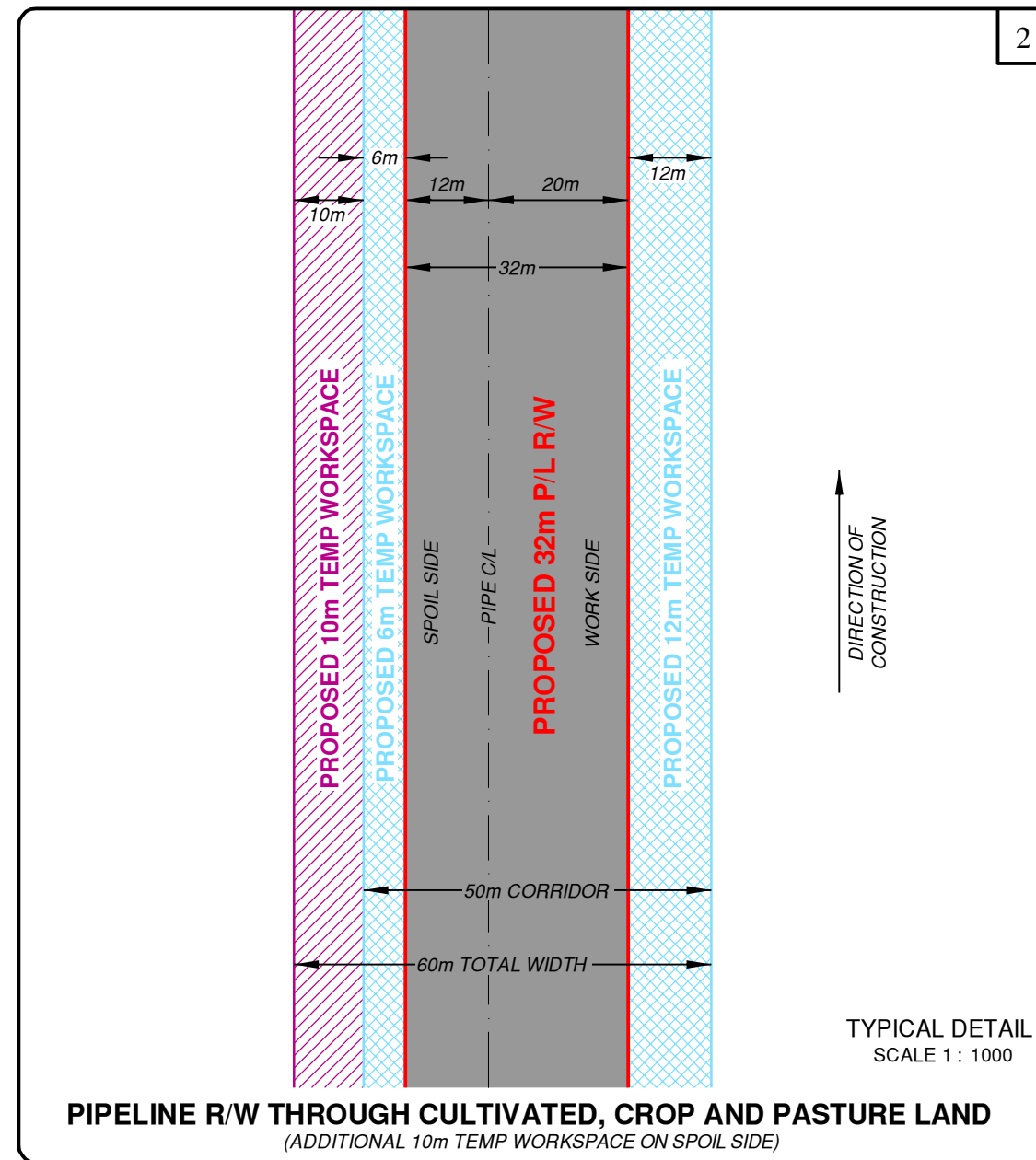
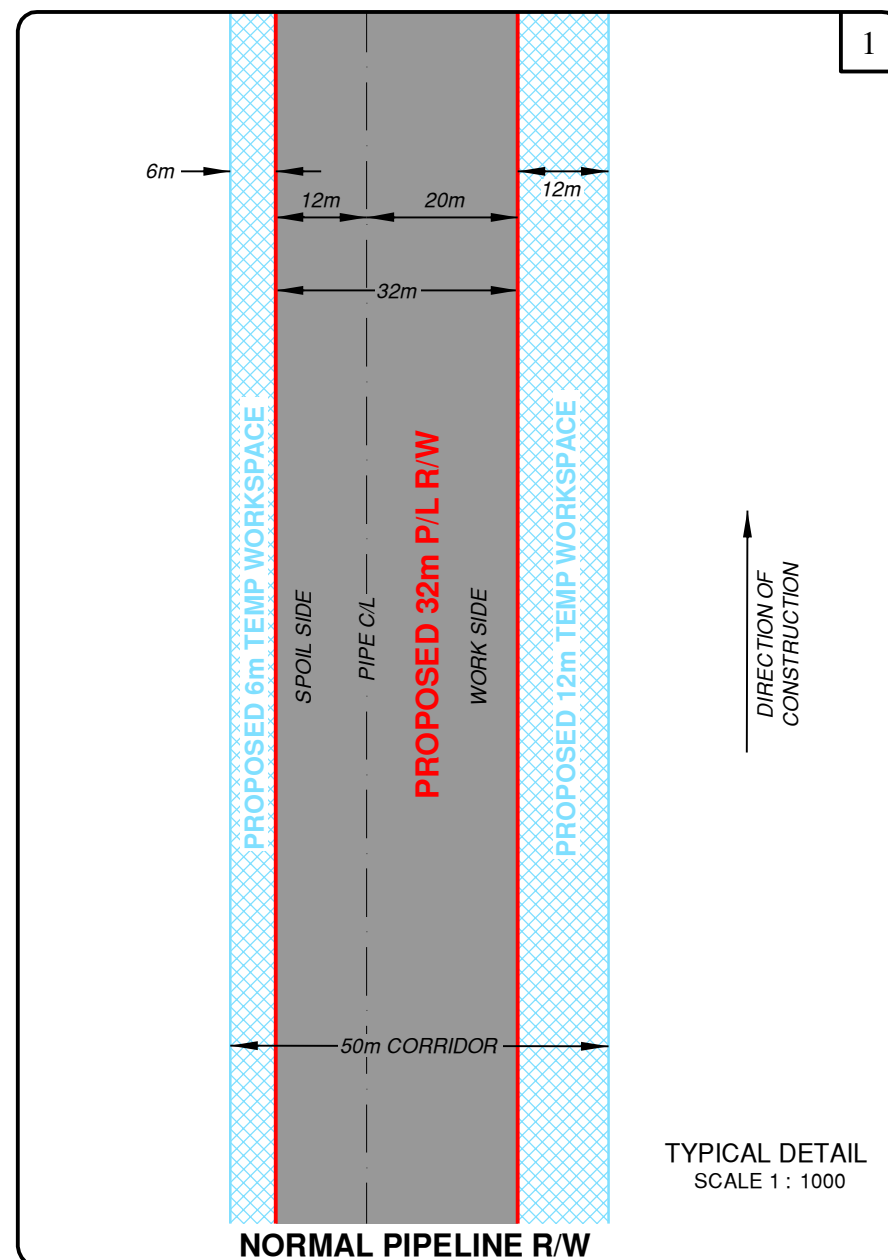
PROPOSED VARIABLE WIDTH (28 to 82m) PIPELINE R/W
FROM c-27-I, 94-B-1 TO b-89-C, 93-O-10






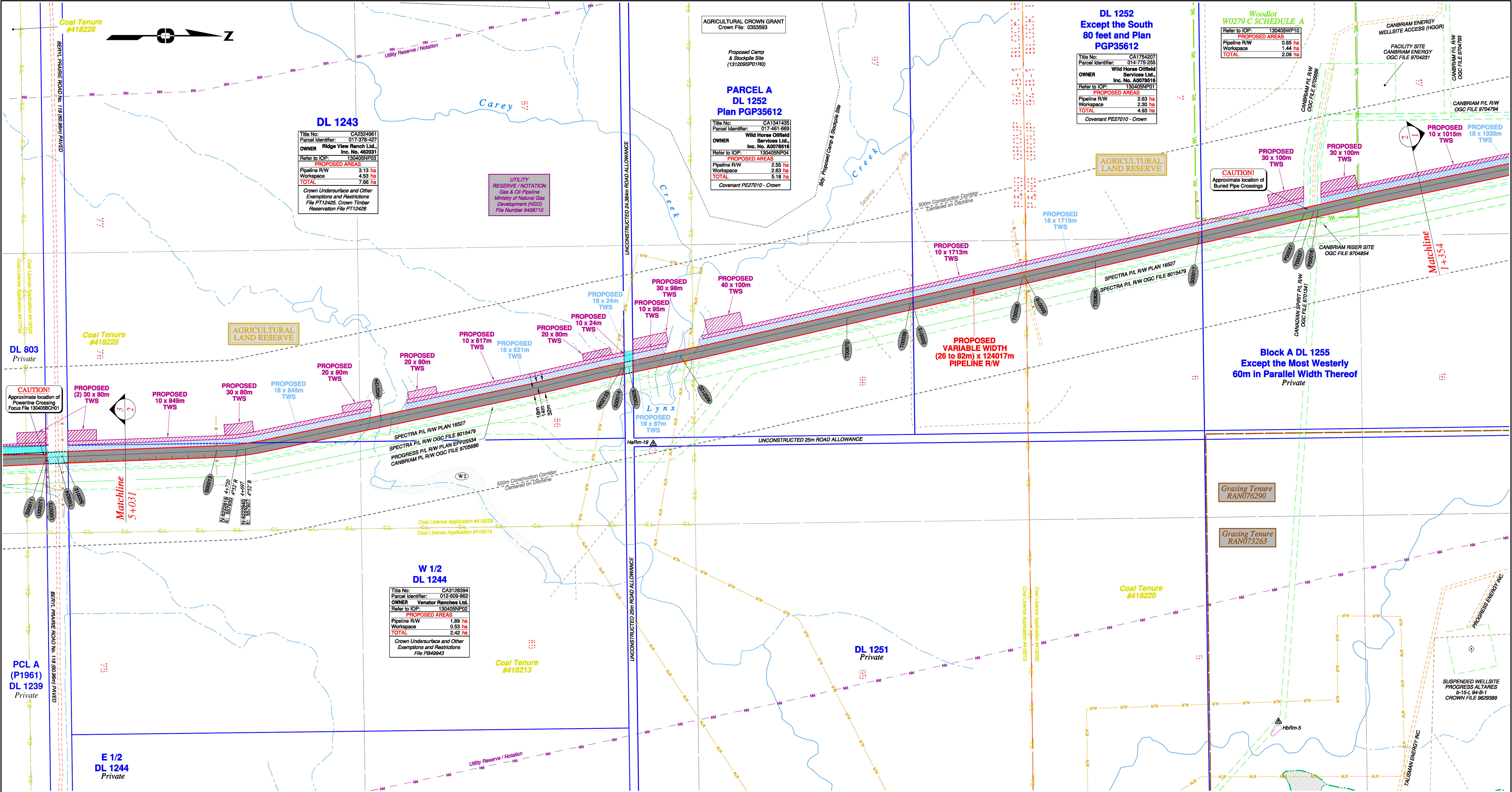
SCALE 1:150,000
(NAD 1983 UTM ZONE 10N)

B.C.G.S. 94B.010,020/94A.00/93P.091/ 93O.056,057,067,068,078,079,080,090,0100





Prince Rupert Gas Transmission Project	 TransCanada <i>In business to deliver</i>	
PRINCE RUPERT GAS TRANSMISSION LTD.		
SKETCH PLAN SHOWING TYPICAL CONSTRUCTION PLAN CROSSING SCENARIOS		
		
The intended plot size of this plan is 864mm in width by 560mm in height when plotted at a scale of 1 : 1000 (use D size sheet)		
Sheet 1		
Rev	Revision Description	Date(Y/M/D)
0	Original Plan Prepared	2014/09/12
		TR
 FOCUS Land Services Limited Partnership 10716 - 100th Avenue, Fort St. John, BC V1J 1Z3 250.787.0300 www.focus.ca		A/E: _____ FOCUS: 130275 TYPICALS REV. 0

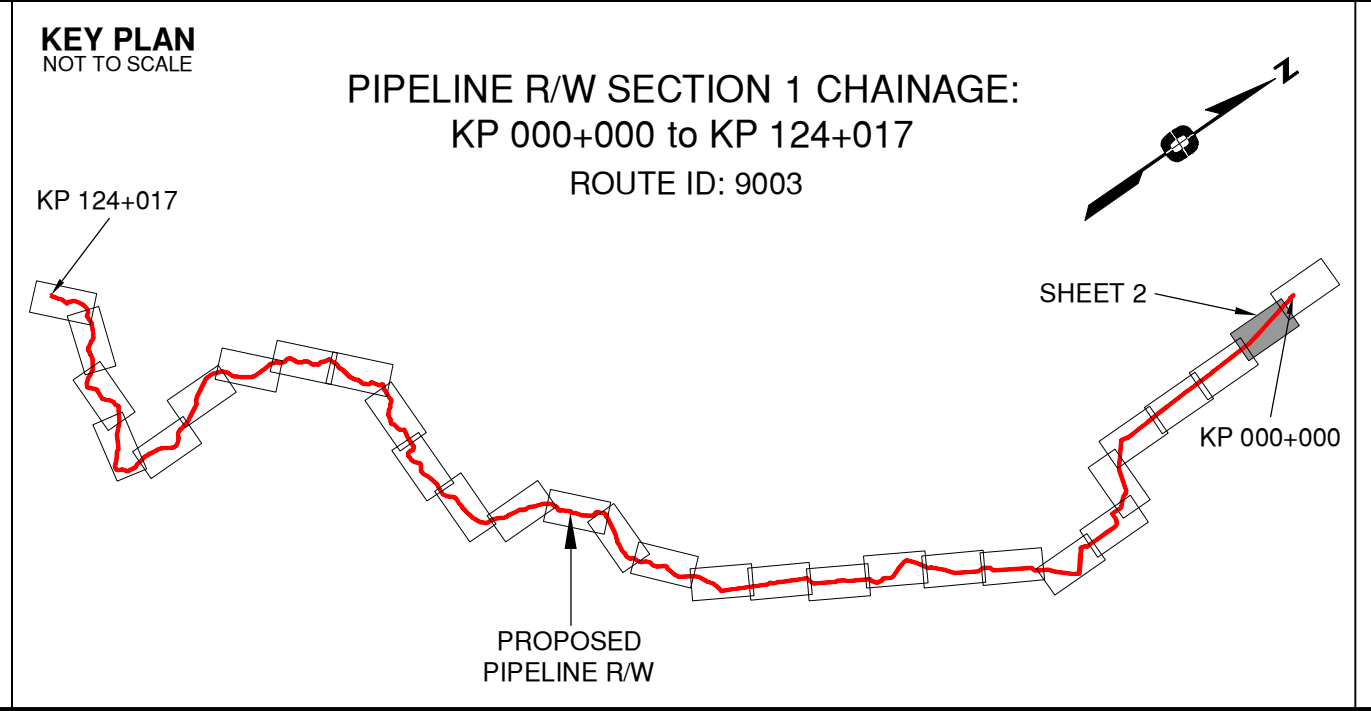


Rev	Revision Description	Date(Y/M/D)	By
0	Original Plan Prepared	2014/09/12	DC
1	Construction Plan Based on Rev.0 (2014/09/12) Except for New Construction Corridor: Shape, Label, Area Table & ePass	2014/12/31	DC

NOTES:

- Co-ordinates are NAD 83 Grid, UTM Zone 9 and Zone 10. Distances shown are in metres and decimals thereof. Chainages are two-dimensional and are on pipeline ditchline. Pipeline segment length derived from ditchline chainages.
- Fault Lines data has been provided from BGC Engineering Inc. Desktop Study dated December 20, 2013.
- Water crossing information has been provided by Stantec. Wetlands data has been provided by Stantec dated August 29, 2014. Freshwater Atlas wetlands outside of construction corridor have been removed from scenery.
- Cutback data is confirmed using information from the Government of BC websites for Forest MapView and MapBC.
- This pipeline section is partially within the Agricultural Land Reserve.
- Field Survey Completed July 15, 2014
- This plan represents the best information available at the time of survey. Focus Surveys and its employees take no responsibility for the location of any underground conduits, pipes, or other facilities whether shown on or omitted from this plan. All underground installations should be located by the respective authorities prior to construction.

LEGEND	
Proposed Pipeline R/W shown thus:	Fish/Wildlife Reserve bdy shown thus:
Proposed Temp. Workspaces shown thus:	Grazing Tenure bdy shown thus:
Proposed Log Decks & Storage Sites shown thus:	Mineral Claim bdy shown thus:
Right of Way shown thus:	Tree Farm Licence shown thus:
Roads shown thus:	Quarry Reserve bdy shown thus:
Highway shown thus:	Ungulate Winter Range bdy shown thus:
Railway line shown thus:	Visual Land Inventory shown thus:
Seismic line/trail shown thus:	Watershed Reserve bdy shown thus:
Recreation Tenure shown thus:	Wind Tenure bdy shown thus:
Drainages shown thus:	Woodlot bdy shown thus:
Buried cable shown thus:	Fault Line shown thus:
Buried pipe shown thus:	Misc. Reserve/Notation bdy shown thus:
Overhead powerline shown thus:	Misc. Licence/Permit bdy shown thus:
Riparian Reserve Zone shown thus:	Stantec Wetland / Classification shown thus:
Riparian Management Zone shown thus:	Crossings shown thus:
Forest Cover Reserve shown thus:	Old Growth Management Area shown thus:
Archaeological site shown thus:	Archaeological Land Reserve bdy shown thus:
Agricultural Land Reserve bdy shown thus:	Coal Tenure bdy shown thus:
Coal Tenure bdy shown thus:	Cutback bdy shown thus:
Fence bdy shown thus:	Fence bdy shown thus:



APPROVED BY

PROJECT ENGINEER

STATION	DESCRIPTION	OWNER
S00013	4+778 Structure / Fence	N 6222760 E 557932 Private
W02124	4+312 Trib to Lynx Creek / Beaver Dam Complex / RRZ = 30 RMZ = 20	ILMB
W02123	3+628 Trib to Lynx Creek / S4 / RRZ = 0 RMZ = 30	ILMB
S00014	3+623 Structure / Fence	N 6223891 E 557701 Private
T00925	3+609 Road Allowance / Unconstructed / N/A	MOTI
W02122	3+463 Lynx Creek / S2 / RRZ = 30 RMZ = 20	ILMB
T00870	2+987 Trail / Condition Unknown	N 6224510 E 557963 Private
T00039	2+807 Trail / Condition Unknown	N 6224688 E 557522 Private
S00015	2+801 Structure / Fence	N 6224692 E 557521 Private
T00038	2+489 Trail / Condition Unknown	N 6224997 E 557451 Private
S00016	2+482 Structure / Fence	N 6225004 E 557450 Private
T00826	2+280 Trail / Condition Unknown	N 6225200 E 557405 Private
S00017	1+985 Structure / Fence	N 6225487 E 557339 Private
P00051	1+684 Buried Pipe / Field Located	N 6225781 E 557272 Canbriam Energy Inc.
T00037	1+658 Access Road / HGGR / OGC # 9705686	Canbriam Energy Inc.
P00016	1+646 Buried Pipe / Field Located / Crown File 9704793	N 6225818 E 557283 Canbriam Energy Inc.
No.	STATION DESCRIPTION	NAD 83 UTM ZONE 10 OWNER

Prince Rupert Gas Transmission Project

PRINCE RUPERT GAS TRANSMISSION LTD.

PROPOSED VARIABLE WIDTH (28 to 82m) PIPELINE R/W FROM c-27-I, 94-B-1 TO b-89-C, 93-O-10 (SHEET CHAINAGE: 1+354 TO 5+031)

Unsurveyed Crown Land/Private Land/Crown Land, Peace River District

The intended plot size of this plan is 864mm in width by 560mm in height when plotted at a scale of 1: 5000 (use D size sheet)

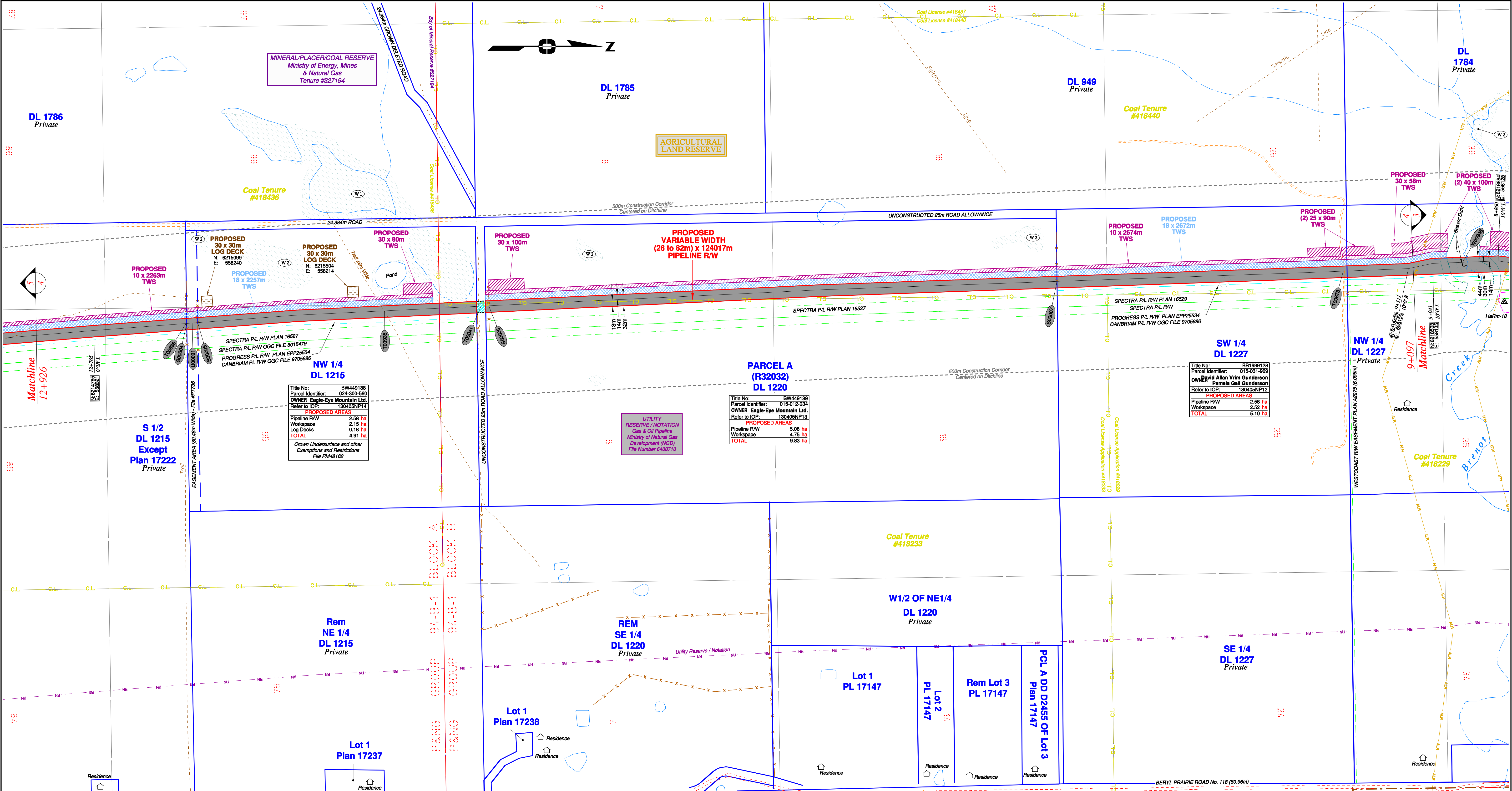
BCGS: 94B.010.020/94A.001/93P.091/93O.056.057.067.068.078.079.080.090.100

Sheet 2 of 30

FOCUS
Focus Surveys (BC) Limited Partnership
10710 - 100th Avenue, Fort St. John, BC
V1J 1Z3 250.787.0300 www.focus.ca

FOCUS:
AFCE: 130275CP01R1
TCPL: 004776-09-ML-03-002
ePASS: 10048735

REV. 1

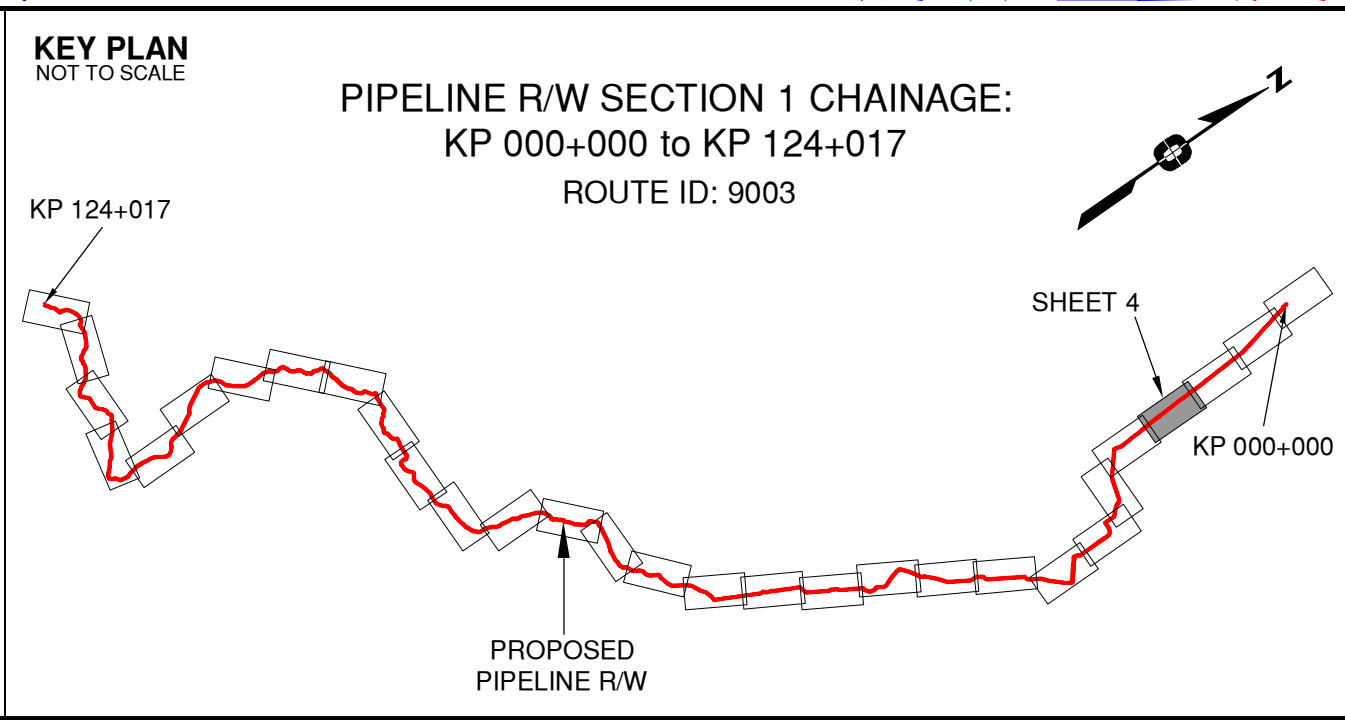


Rev	Revision Description	Date(Y/M/D)	By
0	Original Plan Prepared	2014/09/12	DC
1	Construction Plan Based on Rev.0 (2014/09/12) Except for New Construction Corridor: Shape, Label, Area Table & ePASS	2014/12/31	DC

NOTES:

- Co-ordinates are NAD 83 Grid, UTM Zone 9 and Zone 10. Distances shown are in metres and decimals thereof. Chainages are two-dimensional and are on pipeline ditchline. Pipeline segment length derived from ditchline chainages.
- Fault Lines data has been provided from BGC Engineering Inc. Desktop Study dated December 20, 2013.
- Water crossing information has been provided by Stantec. Wetlands data has been provided by Stantec dated August 29, 2014. Freshwater Atlas wetlands outside of construction corridor have been removed from scenery.
- Cutback data is confirmed using information from the Government of BC websites for Forest MapView and MapBC.
- This pipeline section is partially within the Agricultural Land Reserve.
- Field Survey Completed July 15, 2014
- This plan represents the best information available at the time of survey. Focus Surveys and its employees take no responsibility for the location of any underground conduits, pipes, or other facilities whether shown on or omitted from this plan. All underground installations should be located by the respective authorities prior to construction.

LEGEND
Proposed Pipeline R/W shown thus:
Proposed Temp. Workspaces shown thus:
Proposed Log Decks & Storage Sites shown thus:
Right of Way shown thus:
Roads shown thus:
Highway shown thus:
Railway line shown thus:
Seismic line/trail shown thus:
Recreation Tenure shown thus:
Drainages shown thus:
Buried cable shown thus:
Buried pipe shown thus:
Overhead powerline shown thus:
Riparian Reserve Zone shown thus:
Riparian Management Zone shown thus:
Forest Cover Reserve shown thus:
Archaeological site shown thus:
Agricultural Land Reserve bdy shown thus:
Coal Tenure bdy shown thus:
Cutback bdy shown thus:
Fence bdy shown thus:
Fish/Wildlife Reserve bdy shown thus:
Grazing Tenure bdy shown thus:
Mineral Claim bdy shown thus:
Tree Farm Licence shown thus:
Quarry Reserve bdy shown thus:
Ungulate Winter Range bdy shown thus:
Visual Land Inventory shown thus:
Watershed Reserve bdy shown thus:
Wind Tenure bdy shown thus:
Woodlot bdy shown thus:
Fault Line shown thus:
Misc. Reserve/Notation bdy shown thus:
Misc. Licence/Permit bdy shown thus:
Stantec Wetland / Classification shown thus:
Crossings shown thus:
Old Growth Management Area shown thus:
Residences shown thus:
Power Pole shown thus:



APPROVED BY
PROJECT ENGINEER

STATION	DESCRIPTION	STATION	DESCRIPTION
T00888	12+508 Trail / Condition Unknown	N 6215041 E 558302	Private
S00004	12+506 Structure / Fence	N 6215043 E 558302	Private
U00091	12+491 Utility / Easement Area / Unconstructed	N 6215058 E 558301	Private
S00005	12+476 Structure / Fence	N 6215073 E 558300	Private
T00935	11+956 Trail / Condition Unknown	N 6215592 E 558267	Private
T00041	11+687 Road Allowance / Unconstructed / N/A	N 6215860 E 558254	MOTI
S00006	11+666 Structure / Fence	N 6215881 E 558253	Private
S00007	10+087 Structure / Fence	N 6217459 E 558185	Private
T00873	9+291 Access Road / LGGR	N 6218254 E 558157	Private
No.	STATION DESCRIPTION	NAD 83 UTM ZONE 10	OWNER

TABLE OF CROSSINGS

Prince Rupert Gas Transmission Project

TransCanada
In business to deliver

PRINCE RUPERT GAS TRANSMISSION LTD.

PROPOSED VARIABLE WIDTH (28 to 82m) PIPELINE R/W FROM c-27-1, 94-B-1 TO b-89-C, 93-O-10 (SHEET CHAINAGE: 9+097 TO 12+926)

Unsurveyed Crown Land/Private Land/Crown Land, Peace River District

The intended plot size of this plan is 864mm in width by 560mm in height when plotted at a scale of 1: 5000 (use D size sheet)

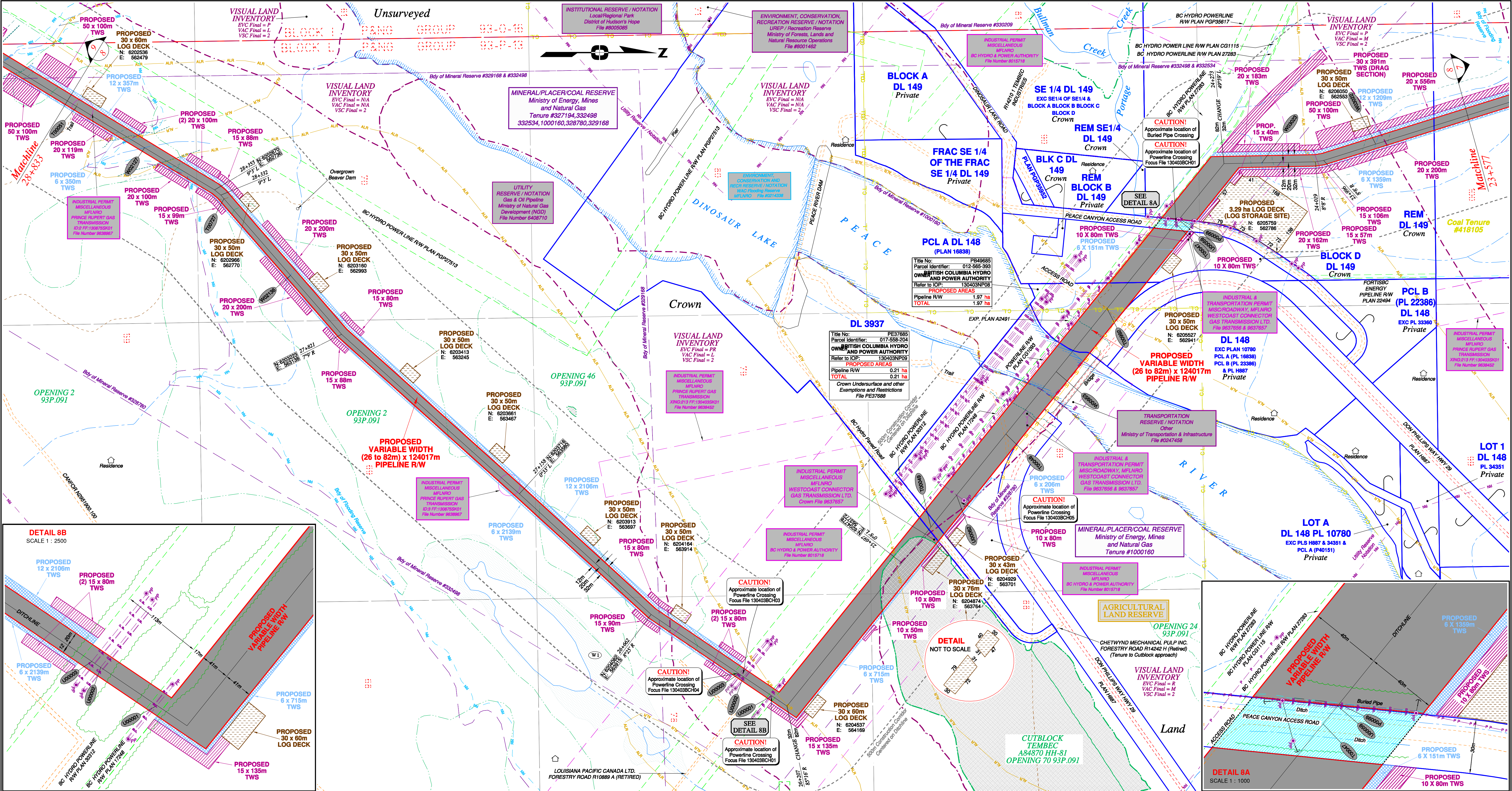
BCGS: 94B.010.020/94A.001/93P.091/93O.056/057.067.068.076.079.080.090.100

Sheet 4 of 30

FOCUS
Focus Surveys (BC) Limited Partnership
10715 - 100th Avenue Fort St. John BC V1J 1Z3 250.757.0300 www.focus.ca

FOCUS: 130275CP01R1
APE: 500948
TCPL: 004776-09-ML-03-004
ePASS: 10048735

REV. 1

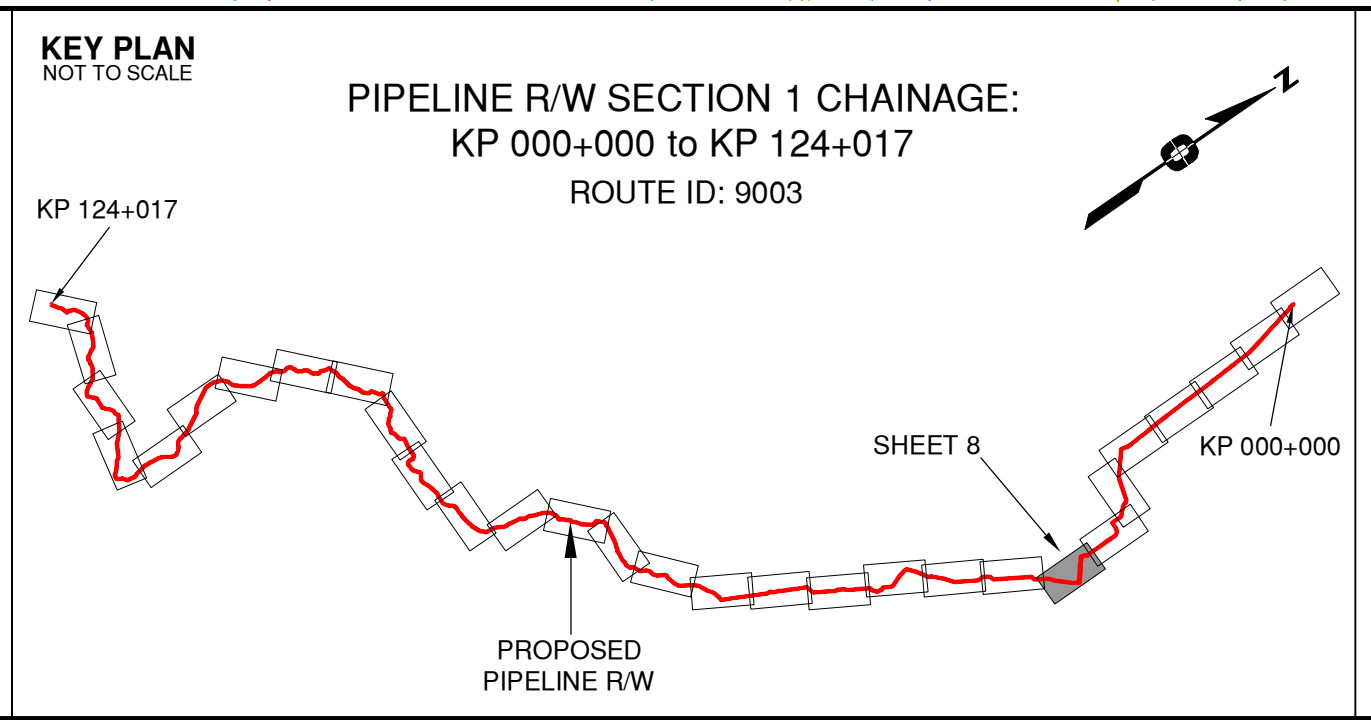


Rev	Revision Description	Date(Y/M/D)	By
0	Original Plan Prepared	2014/09/12	DC
1	Construction Plan Based on Rev.0 (2014/09/12) Except for New Construction Corridor: Shape, Label, Area Table & ePASS	2014/12/31	DC

NOTES:

- Co-ordinates are NAD 83 Grid, UTM Zone 9 and Zone 10. Distances shown are in metres and decimals thereof. Chainages are two-dimensional and are on pipeline ditchline. Pipeline segment length derived from ditchline chainages.
- Fault Lines data has been provided from BGC Engineering Inc. Desktop Study dated December 20, 2013.
- Water crossing information has been provided by Stantec. Wetlands data has been provided by Stantec dated August 29, 2014. Freshwater Atlas wetlands outside of construction corridor have been removed from scenery.
- Cutblock data is confirmed using information from the Government of BC websites for Forest MapView and MapBC.
- This pipeline section is partially within the Agricultural Land Reserve.
- Field Survey Completed July 15, 2014
- This plan represents the best information available at the time of survey. Focus Surveys and its employees take no responsibility for the location of any underground conduits, pipes, or other facilities whether shown on or omitted from this plan. All underground installations should be located by the respective authorities prior to construction.

LEGEND
Proposed Pipeline R/W shown thus:
Proposed Temp. Workspaces shown thus:
Proposed Log Decks & Storage Sites shown thus:
Right of Way shown thus:
Roads shown thus:
Highway shown thus:
Railway line shown thus:
Seismic line/trail shown thus:
Recreation Tenure shown thus:
Drainages shown thus:
Buried cable shown thus:
Buried pipe shown thus:
Overhead powerline shown thus:
Riparian Reserve Zone shown thus:
Forest Cover Reserve shown thus:
Archaeological site shown thus:
Agricultural Land Reserve bdy shown thus:
Coal Tenure bdy shown thus:
Cutblock bdy shown thus:
Fence bdy shown thus:
Fish/Wildlife Reserve bdy shown thus:
Grazing Tenure bdy shown thus:
Mineral Claim bdy shown thus:
Tree Farm Licence shown thus:
Quarry Reserve bdy shown thus:
Ungulate Winter Range bdy shown thus:
Visual Land Inventory shown thus:
Watershed Reserve bdy shown thus:
Wind Tenure bdy shown thus:
Woodlot bdy shown thus:
Fault Line shown thus:
Misc. Reserve/Notation bdy shown thus:
Misc. Licence/Permit bdy shown thus:
Riparian Reserve Zone shown thus:
Forest Management Zone shown thus:
Forest Cover Reserve shown thus:
Archaeological site shown thus:
Agricultural Land Reserve bdy shown thus:
Coal Tenure bdy shown thus:
Cutblock bdy shown thus:
Fence bdy shown thus:
Power Pole shown thus:



APPROVED BY
PROJECT ENGINEER

STATION	DESCRIPTION	OWNER
W00051	28+803 Trail / Condition Unknown	N 6202487 E 562905 Crown
W00127	28+582 Trib to Peace River / S3 / RR2 = 20 RMZ = 20	N 6202676 E 562919 ILMB
W00727	28+319 Trail / Condition Unknown	N 6202896 E 562761 Crown
W00136	28+038 Trib to Peace River / S6 / RR2 = 0 RMZ = 20	N 6203081 E 562974 ILMB
U00003	26+368 Overhead Powerline / Unknown	N 6204326 E 564079 BC Hydro
U00002	26+353 Overhead Powerline / Unknown	N 6204338 E 564088 BC Hydro
U00001	26+257 Overhead Powerline / Unknown	N 6204418 E 564141 BC Hydro
T00049	25+569 Access Road / LGGR	N 6204859 E 563672 BC Hydro
U00062	25+455 Overhead Powerline / 4 wires	N 6204930 E 563984 BC Hydro
U00048	25+237 Trail / Condition Unknown	N 6205067 E 563414 BC Hydro
W00253	25+015 Peace River / S1 / RR2 = 50 RMZ = 20	N 6205207 E 563241 ILMB
T00092	24+790 Trail	N 6205348 E 563096 Crown
T00047	24+486 Peace Canyon Access Road / Paved	N 6205539 E 562829 MOTI
U00059	24+473 Overhead Powerline	N 6205547 E 562819 BC Hydro
P00099	24+471 Buried Pipe / Field Located	N 6205548 E 562818 FortiBC Energy Inc.
W00323	24+168 Trib to Peace River / S4 / RR2 = 0 RMZ = 30	N 6205778 E 562662 ILMB
W00322	23+844 Trib to Peace River / S4 / RR2 = 0 RMZ = 30	N 6206094 E 562610 ILMB
No.	STATION DESCRIPTION	NAD 83 UTM ZONE 10 OWNER

TABLE OF CROSSINGS

Prince Rupert Gas Transmission Project

PRINCE RUPERT GAS TRANSMISSION LTD.

PROPOSED VARIABLE WIDTH (28 to 82m) PIPELINE R/W FROM c-27-1, 94-B-1 TO b-89-C, 93-O-10 (SHEET CHAINAGE: 23+577 TO 28+833)

Unsurveyed Crown Land/Private Land/Crown Land, Peace River District

The intended plot size of this plan is 864mm in width by 560mm in height when plotted at a scale of 1: 5000 (use D size sheet)

BCGS: 94B.01.020/94A.01/93P.091/93O.056.057/067.068.076.079.080.090.100

FOCUS

Focus Surveys (BC) Limited Partnership

10715 - 100th Avenue, Fort St. John, BC V1J 1Z3 250.787.6300 www.focus.ca

FOCUS:

AFCE: 130275CP01R1

TCPL: 004776-09-ML-03-008

ePASS: 10048735

Sheet 8 of 30

REV. 1