

OGC File: 9637423

March 5, 2013

Coastal GasLink Pipeline Ltd.  
450 – 1<sup>st</sup> Street SW  
Calgary, Alberta T2P 5H1

Attention: Surface Land Administrator

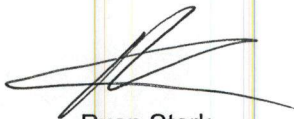
Re: Approval for Short Term Use of Water

This approves you, under Section 8 of the *Water Act* to divert and use water as follows:

1. The approved water withdrawal points on the Sukunka are located at:  
UTM locations N. 6157214, E. 587209, N. 6156672, E. 586971, and N. 6156190, E. 586689.
2. The approved use of water is restricted to the oil and gas activities of the Operator.
3. The maximum quantity of water that may be diverted from each withdrawal point is 127m<sup>3</sup>/day, at a rate not to exceed 14l/s (0.5 cfs).
4. The maximum quantity of water that may be diverted during the duration of the authorization is 3,042m<sup>3</sup>.
5. On any stream, no diversion is permitted where stream discharge is less than 55 l/s, or where the diversion will cause the stream discharge to fall below 55 l/s. No diversion is permitted where stream (wetted) depth is less than 0.30 metres (12 inches) at the withdrawal location, or where the diversion will cause the stream (wetted) depth to fall below 0.30 metres (12 inches) at the withdrawal location.
6. On any lake, water withdrawal must cease if drawdown exceeds 0.10 metres (relative to the water level documented at the commencement of withdrawal activities). In the event that drawdown exceeds 0.10 metres, withdrawals may resume only when water levels have risen above the 0.10 metres drawdown level.
7. No water will be diverted or removed from any beaver pond.
8. Approval has been granted to use the water from March 5, 2013 to May 31, 2013.
9. This approval does not authorize any instream work.
10. A copy of this approval must be available for inspection at the tank truck and wellsite location(s).
11. End-of-pipe intakes must contain a screen with a mesh size that does not exceed one tenth of an inch.

12. The holder of this approval must maintain accurate records of all water withdrawal activities throughout the term of this permit. A digital spreadsheet has been sent to the applicant's email provided on the application. Water withdrawal records for each diversion point, including "0" values for months where no water was withdrawn, must be recorded monthly on the digital spreadsheet provided. The spreadsheet must be submitted to the Oil and Gas Commission on a quarterly basis to [OGCWater.VolumeData@bcogc.ca](mailto:OGCWater.VolumeData@bcogc.ca). Quarterly reports are due on or before April 25<sup>th</sup>, July 25<sup>th</sup>, October 25<sup>th</sup>, and January 25<sup>th</sup>. Do not modify the digital spreadsheet as it is designed to be interpreted by Commission software. If a cell/field in the spreadsheet is not relevant to the permitted activity, leave it blank.
13. In times of drought, the Commission may suspend short term water use previously authorized when there is risk to other resources that may result from the withdrawal of water. Water use suspensions may remain in place until such time as the Commission is satisfied that there is sufficient water in the applicable water body or water course to permit the short term use of the amount specified in the approval.

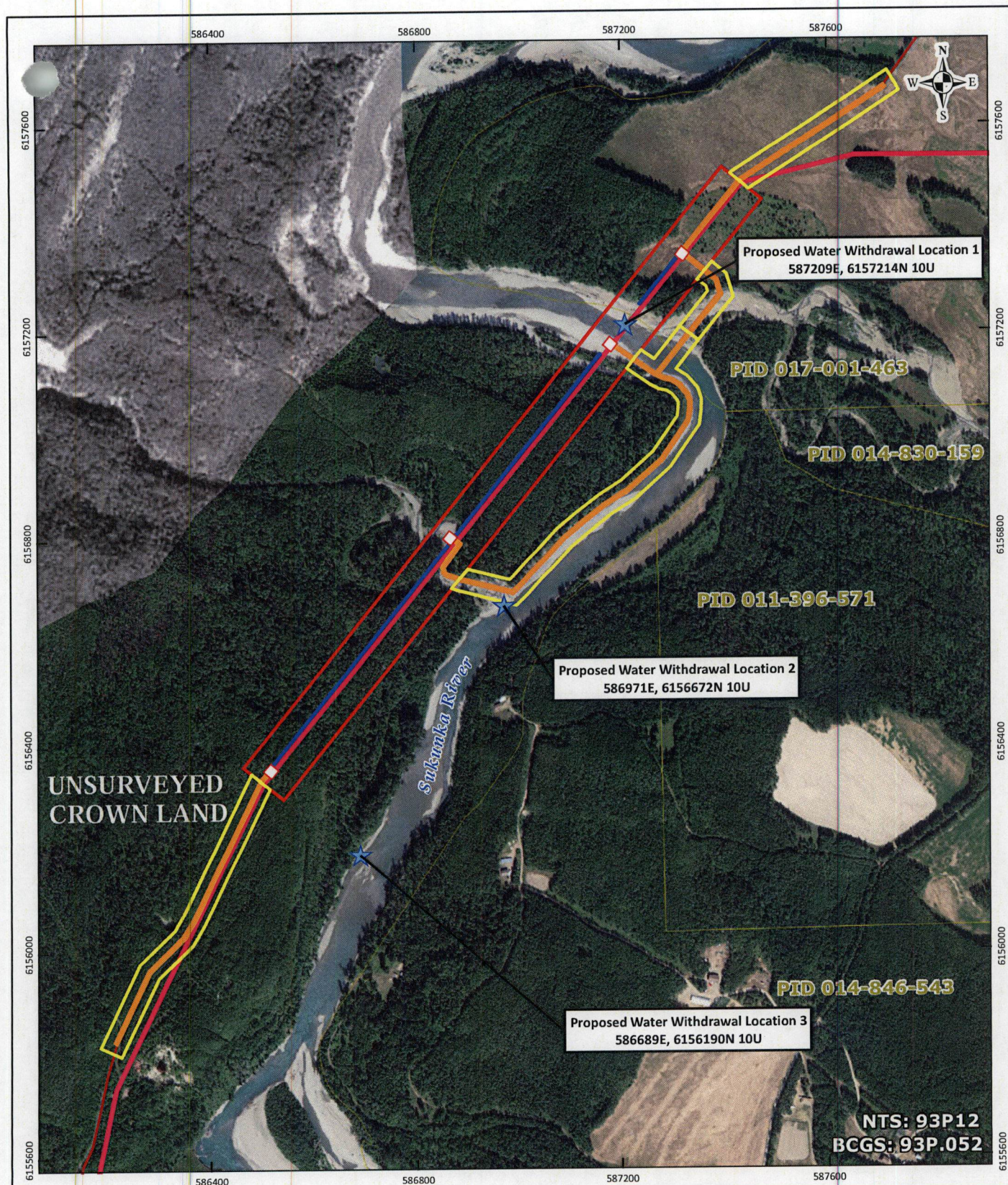
The attached plan(s) form an integral part of this authorization.



Ryan Stark  
Natural Resource Officer

cc: OGC File: 9637423  
cc: Kelly Lake Cree Nation, Kelly Lake First Nation, Kelly Lake Metis Settlement Society, McLeod Lake Indian Band, West Moberly First Nation, Sauteau First Nation





	Water Withdrawal Location	1.5 m Access	OGC File Number:	ePASS No:	Coastal GasLink Pipeline Project	
	Proposed 10 m x 10 m Borehole Pad	5.0 m Access			COASTAL GASLINK PIPELINE LTD.	
	Coastal GasLink Study Corridor Centerline	20.0 m Access Buffer	NTS:	BCGS:	Proposed Water Withdrawal Locations (Sukunka River) Geotechnical Investigation	
Existing Access	Investigative Area	93P12	93P.052	Water Act, Section 8		
Proposed Water Withdrawal Location:		UTM Zone 10N Imagery, Water Withdrawal Location, Borehole, Centerline, Access, Access Buffer, Investigative Area: Coastal Gaslink Pipeline Ltd. 2012; Crown Land: Midwest Survey 2012; Lot Boundary: BC Web Map Services 2012.		Scale: 1:10,000	November 02, 2012	
Location 1: 587209E, 6157214N 10U		<small>Although there is no reason to believe that there are any errors associated with the data used to generate this product or in the product itself, users of these data are advised that errors in the data may be present.</small>			Revision A	
Location 2: 586971E, 6156672N 10U						
Location 3: 586689E, 6156190N 10U						

TERA:t8282\_Section8\_Water-Withdrawal\_Location\_SukunkaRiver\_RevA.mxd

9637423