

Oil and Gas Commission

6534 100th Ave., Fort St. John, B.C
V1J 8C5

APPROVAL
AA-111433

Under the Provisions of the Environmental Management Act

Coastal GasLink Pipeline Ltd.
450 1st Street SW,
Calgary, Alberta
T2P 5H1

is authorized to discharge contaminants to the environment from an air curtain incinerator located along the corridor of Section 6 of the Coastal GasLink Pipeline project, subject to the conditions listed below. Contravention of any of these conditions is a violation of the *Environmental Management Act* and may result in prosecution.

1. DEFINITIONS

For the purpose of this approval, the following definitions apply:

- 1.1. **Act** means the *Environmental Management Act*.
- 1.2. **Discharge** means the total mass of a solid, liquid or gaseous material introduced into the environment.
- 1.3. **Manager** means an OGC employee authorized to exercise the powers of the OGC under Section 15 of the *Environmental Management Act*.
- 1.4. **OGC** means the B.C Oil and Gas Commission.
- 1.5. **Approval Holder** means Coastal GasLink Pipeline Ltd.
- 1.6. **Ventilation Forecast** means the afternoon ventilation index forecast issued by Environment Canada for a geographic area.

Date Issued: January 10th, 2023



Devin Scheck, P.Ag
Supervisor, Environmental Stewardship

- 1.7. **Custom Ventilation Forecast** means a forecast of the atmosphere's ability in a geographic area to disperse smoke in accordance with section 16 of the Open Burning Smoke Control Regulation.
- 1.8. **Custom Ventilation Forecaster** means a person who a) is a meteorologist employed by environment Canada and classified as a Meteorologist 3 or above, b) is a Weather Forecaster, a Fire Weather Forecaster, an Air Quality Meteorologist or an Air Quality Science Specialist employed by or under contract with the government, or c) has similar knowledge and experience as described in a) or b) and is approved in writing by a director to conduct custom ventilation forecasts for the purposes of the Open Burning Smoke Control Regulation.

2. **AUTHORIZED DISCHARGES**

- 2.1. This subsection applies to the discharge of air contaminants from **ONE (1) AIR CURTAIN INCINERATOR AT SIX BURN LOCATIONS**. The site reference number for this discharge is E330414.

2.1.1. The approximate authorized load per burn site is as authorized below.

2.1.2. The authorized work is one (1) air curtain incinerator (ACI) at six burn locations. Approximate locations are as follows:

Burn Site	Lat./Long.	Authorized Load (tonnes)
BS 1	54.08398N, 125.411290W	300
BS 2	54.14111N, 125.703647W	300
BS 4	54.09028N, 126.223925W	900
BS 5	54.10479N, 126.294953W	500
BS 6	54.10294N, 126.366649W	600
BS 7	54.16850N, 126.589011W	800

2.1.3. The authorized period of discharge is up to 14 days of active burning for each burn site, which is not required to be consecutive, over the duration of this authorization.

- 2.1.4. Opacity does not exceed 40% during the 30-minute period following the start of the open burning and does not exceed 15% for more than 5 consecutive minutes during any other 30-minute period during the open burning.
- 2.1.5. The authorized material is not stacked above the air outlet of the air curtain incinerator.
- 2.1.6. The blowers of the air curtain incinerator operate continuously until the air curtain incinerator ceases combustion of the authorized materials, or until all of the authorized materials being burned are reduced to ash.
- 2.1.7. The air curtain incinerator is operated in accordance with the manufacturer's recommendations.
- 2.1.8. A copy of the manufacturer's recommendations is kept on the site of the open burning for the duration of the open burning.
- 2.1.9. The authorized material to be combusted is wooden access mats, skids and rig mats.
- 2.1.10. Waste which is defined in section 2 of Schedule 1 of the Waste Discharge Regulation is prohibited from being burned.
- 2.1.11. The location from which the discharge originates is within the certified pipeline project boundary, as outlined in section 2.1.2. above.
- 2.2.** This subsection applies to the discharge of air contaminants from **ONE (1) AIR CURTAIN INCINERATOR AT ONE (1) BURN LOCATION**. The site reference number for this discharge is E330415.
- 2.2.1. The approximate authorized load is as stipulated below.
- 2.2.2. The authorized work is one (1) air curtain incinerator at one burn location as follows:

Burn Site	Lat./Long.	Authorized Load (tonnes)
BS 3	54.150561N, 125.749644W	900

- 2.2.3. The authorized period of discharge is up to 14 days of active burning, which is not required to be consecutive, over the duration of this authorization.
- 2.2.4. The open burning starts not earlier than one hour after sunrise.
- 2.2.5. The authorized material is added to the ignited air curtain incinerator only during the period that starts one hour after sunrise and ends at sunset.
- 2.2.6. The authorized material may only be ignited if the ventilation forecast for that area, obtained on the day, but before, the open burning starts is “good” or “fair” for the day the open burning is carried on. If a custom ventilation forecast is used, the custom ventilation forecast for that area is obtained on the day before or on the day, but before, the open burning starts, and is “good” or “fair” for the day the open burning is carried on.
- 2.2.7. If the forecast obtained above is “poor” for the day it is obtained, no more authorized material is ignited.
- 2.2.8. Opacity does not exceed 40% during the 30-minute period following the start of the open burning and does not exceed 15% for more than 5 consecutive minutes during any other 30-minute period during the open burning.
- 2.2.9. The material to be combusted is not stacked above the air outlet of the air curtain incinerator.
- 2.2.10. The blowers of the air curtain incinerator operate continuously until the air curtain incinerator ceases combustion of the authorized materials, or until all of the authorized materials being burned are reduced to ash.
- 2.2.11. The air curtain incinerator is operated in accordance with the manufacturer’s recommendations.
- 2.2.12. A copy of the manufacturer’s recommendations is kept on the site of the open burning for the duration of the open burning.
- 2.2.13. The authorized material to be combusted is wooden access mats, skids and rig mats.
- 2.2.14. Waste which is defined in section 2 of Schedule 1 of the Waste Discharge Regulation is prohibited from being burned.
- 2.2.15. The location from which the discharge originates is within the certified pipeline project boundary, as outlined in section 2.2.2. above.



Devin Scheck, P.Ag
Supervisor, Environmental Stewardship

- 2.3.** This subsection applies to the discharge of ash produced from the combustion of wood waste authorized under this Approval.
- 2.3.1. The authorized discharge period is continuous.
- 2.3.2. The ash may be disposed of at a suitable disposal facility which has been authorized under the Environmental Management Act to receive industrial waste including ash from the combustion of wood waste.
- 2.3.3. Alternatively, the ash may be disposed of on-site. The ash will be swept with a magnet to remove the metal. Once the metal is removed and the ash is cooled, the ash may be covered/buried with mineral soil. Soil handling and restoration measures will be adhered as outlined within Coastal Gaslink's Environmental Management Plan.
- 2.3.4. On-site disposal of ash shall not occur within 100 m of a stream or permanent waterbody.
- 2.3.5. The waste that may be discharged is the ash generated from the combustion of the authorized materials specified within Section 2.1 & 2.2.

3.0 GENERAL REQUIREMENTS

3.1 General Requirements

- 3.1.1 Nothing in the Approval authorizes an open fire that is
- (a) prohibited by a ban on igniting open fires imposed by
 - (i) a fire department, as defined in the Fire Services Act,
 - (ii) a local government, or
 - (iii) an improvement district, as defined in the Local Government Act, or
 - (b) contrary to the Wildfire Act or any other enactment.
- 3.1.2 Despite this Approval, the Approval Holder must not start open burning or add material to the ignited piles if the local air flow or atmospheric mixing is likely to cause the smoke emitted by the open burning to
- (a) negatively impact a nearby population centre or work camp,



Devin Scheck, P.Ag
Supervisor, Environmental Stewardship

- (b) be a navigation hazard at nearby airports or on nearby highways by significantly reducing visibility.

3.1.3 Setbacks for open burning

The Approval Holder must ensure that open burning with an air curtain incinerator is carried out at least

- (a) 100 m from all neighbouring buildings that

- (i) are residences, or
 - (ii) contain businesses in which persons carry on the business during regular business hours, and

- (b) 500 m from the nearest property line of all schools, hospitals and community care facilities.

3.1.4 Fire Protection

As a safeguard against accidental fires and to ensure proper operation of the air curtain incinerator, an attendant must be on duty at the site while the air curtain incinerator is in use. Adequate fire protection equipment must be maintained on site to extinguish fires that may ignite outside of the ACI.

3.1.5 Cessation of Fire Feeding and Burning

The Manager may require the Approval Holder to cease the addition of material to the air curtain incinerator at any time if the Manager has reason to believe that emissions from the air curtain incinerator are impacting the receiving environment or when complaints are received regarding local ambient air quality.

3.1.6 Environmental Impact

Inspections of the authorized works and discharge may be carried out by OGC personnel as part of the routine inspection procedure. Based on these inspections and any other information available to the Manager on the effect of the discharge on the receiving environment, the Approval Holder may be required to undertake monitoring, additional studies, change the method of operation or shutdown the operations.



Devin Scheck, P.Ag
Supervisor, Environmental Stewardship

3.1.7 Disposal of Ash

The residual of combustion must be removed from the air curtain incinerator regularly and allowed to cool to ambient temperature prior to being disposed. The Approval Holder must take the necessary precautions for avoiding aerial dispersion of ash and the risk of ash leachate at all times.

3.1.8 Maintenance of Works and Emergency Procedures

The Approval Holder must inspect the authorized works regularly and maintain them in good working order. In the event of an emergency or condition beyond the control of the Approval Holder which prevents effective operation of the approved method of pollution control, the Approval Holder must notify the Manager immediately, and take appropriate remedial action. The Manager may reduce or suspend the operation of the Approval Holder to protect the environment until the approved method of pollution control has been restored.

Instances of approval non-compliance shall be self-disclosed upon discovery, as outlined within Chapter 3 of the OGC Compliance and Enforcement Manual; OGCWaste.Management@bcogc.ca shall also be informed of the self-disclosure.

For spills which meet the Spill Reporting Regulation reporting criteria, a report shall be made immediately to the Provincial Emergency Program telephone 1-800-663-3456.

3.1.9 Bypasses

The Approval Holder must ensure that no waste is discharged to the environment without being processed through the authorized works unless prior written approval is received from the Manager.

3.1.10 Submission of Custom Ventilation Forecast

If applicable, the Approval Holder must ensure that the custom ventilation forecast is submitted by email to the Ministry of Environment & Climate Change Strategy, using the email address made known by the ministry & to OGCWaste.Management@bcogc.ca before starting the open burning.



Devin Scheck, P.Ag
Supervisor, Environmental Stewardship

4.0 MONITORING AND REPORTING REQUIREMENTS

4.1 Visual Monitoring of the ACI Emissions

Opacity monitoring must consist of a visible emission reading at least once a day. The opacity reading must be conducted while the unit is in operation, but not during periods of start-up, shutdown, or malfunction.

The ACI's owner or operator must maintain a monitoring log, with daily records compiled and analyzed on a monthly basis. The monitoring log must contain the following information for each opacity reading:

1. The date and time the visible emissions/opacity reading was performed.
2. The percentage opacity observed.
3. Description of remedial actions taken to reduce opacity if the observed opacity was greater than 15%.
4. Re-evaluation of opacity to ensure it is less than 15%.
5. Signature of person performing visible emission reading and/or visible emission.

Additionally, the Approval Holder must provide high-definition images (video or pictures) of the works to the Manager and stakeholders upon request of the Manager. The images must have enough contrast to capture the emissions from the ACI, as well as the work settings during the operation. The images must include the date and time when taken.

4.2 Discharge Monitoring

The Approval Holder must track the status of the ACI operation including the ventilation forecast or custom ventilation forecasts obtained in respect to open burning, location, operational hours, load frequency, approximate tonnage of material burned per day, and any fumigation issues. Daily records must be compiled and analyzed.

4.3 Discharge Reporting

A final report of the discharge monitoring under sections 4.1 & 4.2 must be submitted within 30 days after the completion of the authorized works or upon request from the OGC, with submission made to OGCWaste.Management@bcogc.ca.



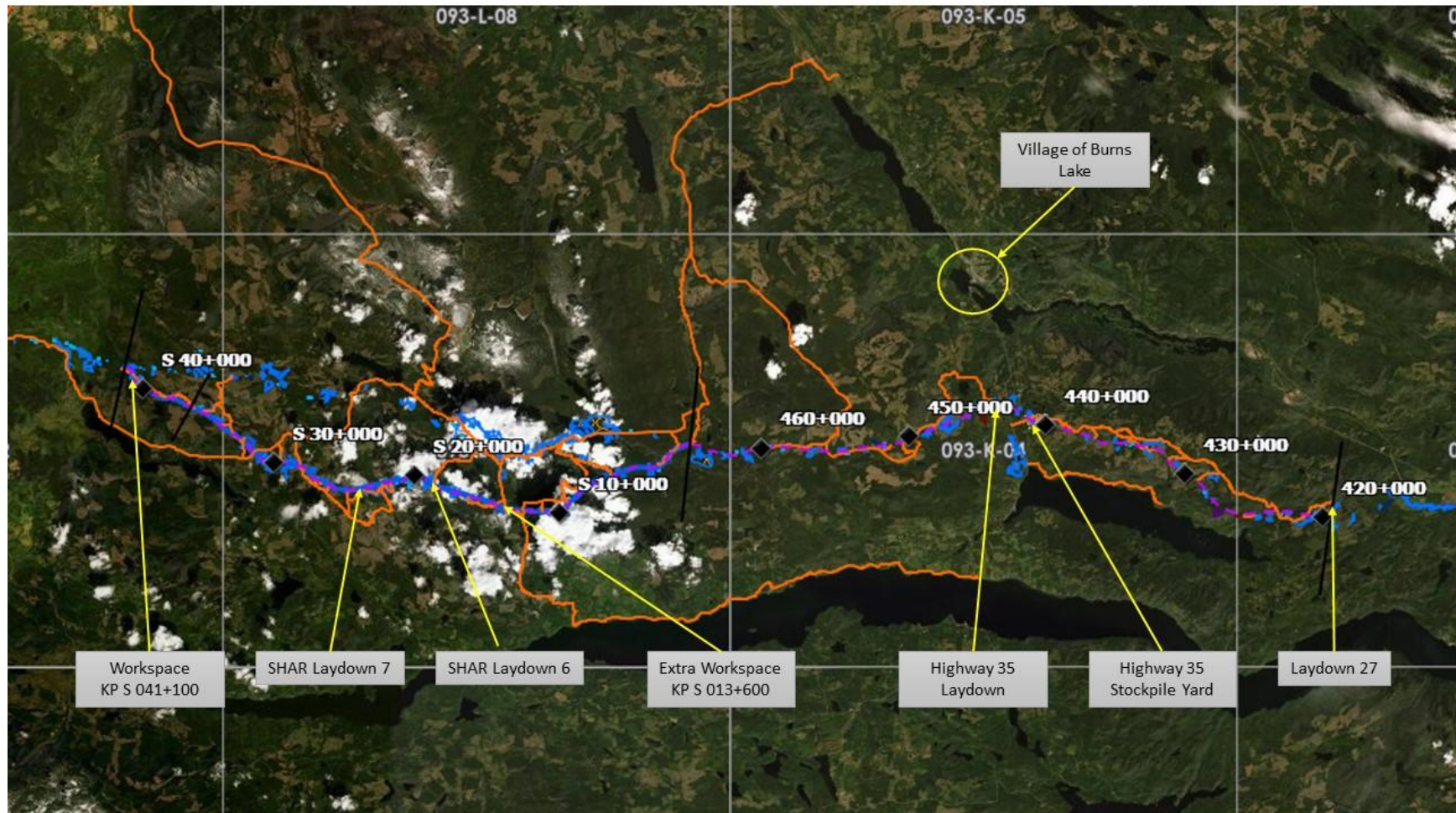


Figure 9-1: Overview of WP3C Burn Locations